

SOUTH CAROLINA
DEPARTMENT OF LABOR, LICENSING AND REGULATION
ORGANIZATIONAL CHART

MARCH 2022

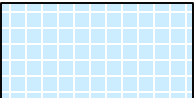
SOUTH CAROLINA
DEPARTMENT OF LABOR, LICENSING AND REGULATION
ORGANIZATIONAL CHARTS

Light Orange Square



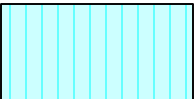
Employee Exempt from Grievance

Light Blue Square



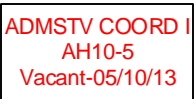
Employee returned after TERI
or Retirement; Exempt Grv

Turquoise Vertical Stripe



Employee eligible to retire
within 5 years by service
or age

White Solid Red Letters



Vacant Position-Vacancy
Date

Yellow Diagonal Stripe



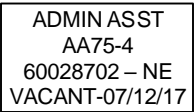
Temporary Employee

Dark Pink Outline



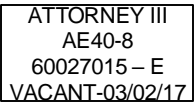
Borrowed position

NE Designation



Non-exempt position

E Designation



Exempt position

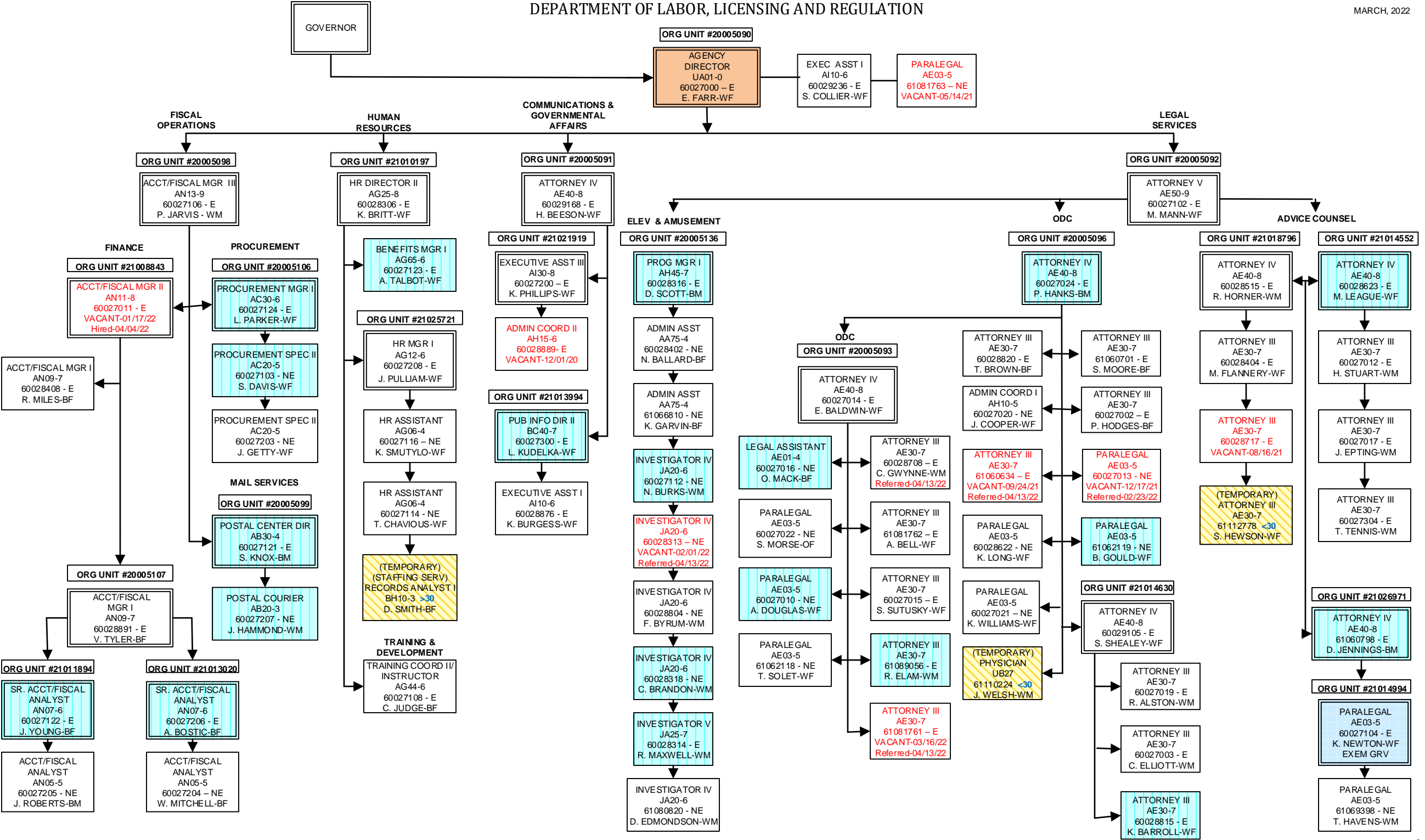
Purple Diagonal
Stripe



Two-Week Break

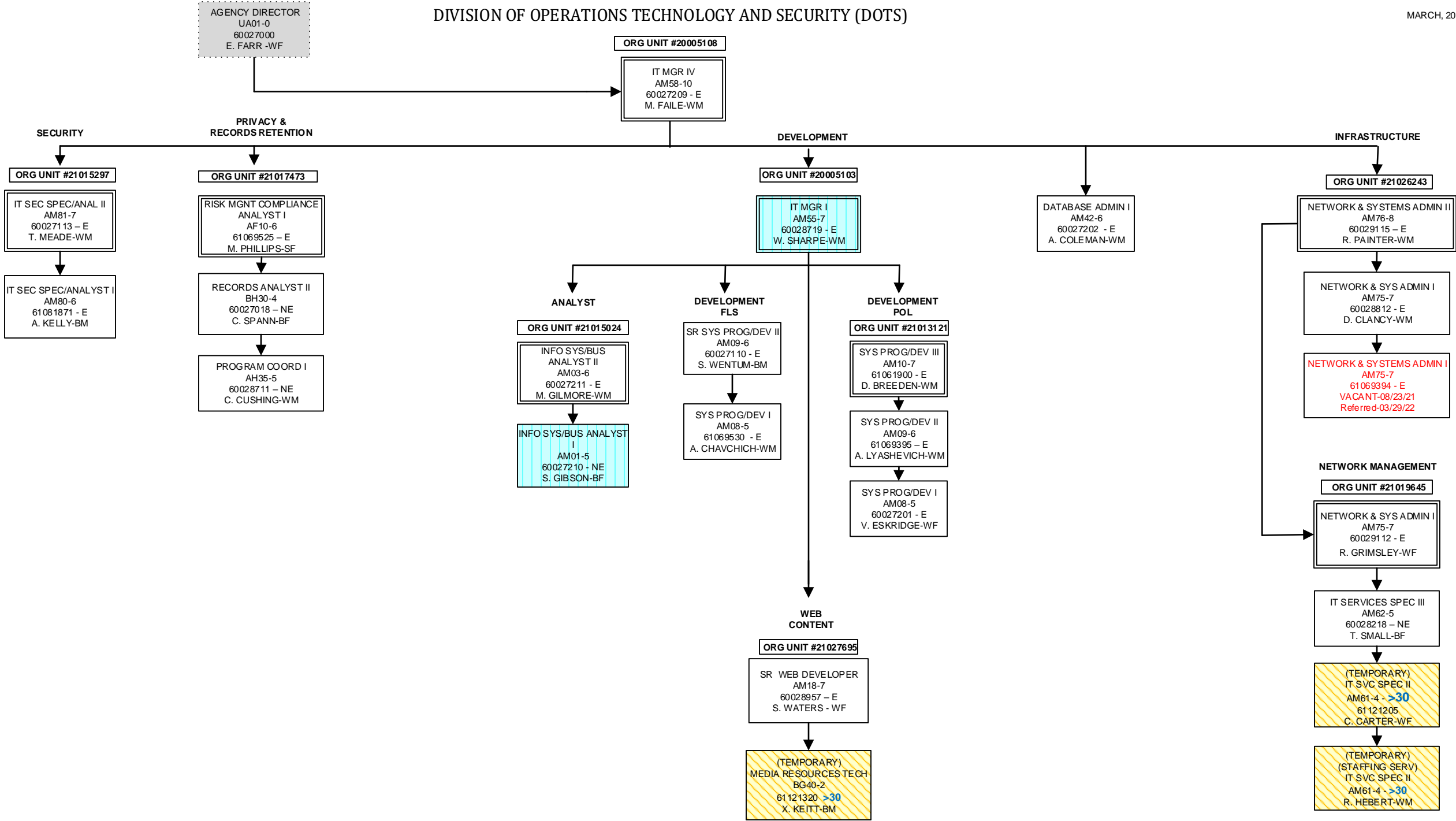
DEPARTMENT OF LABOR, LICENSING AND REGULATION

MARCH, 2022



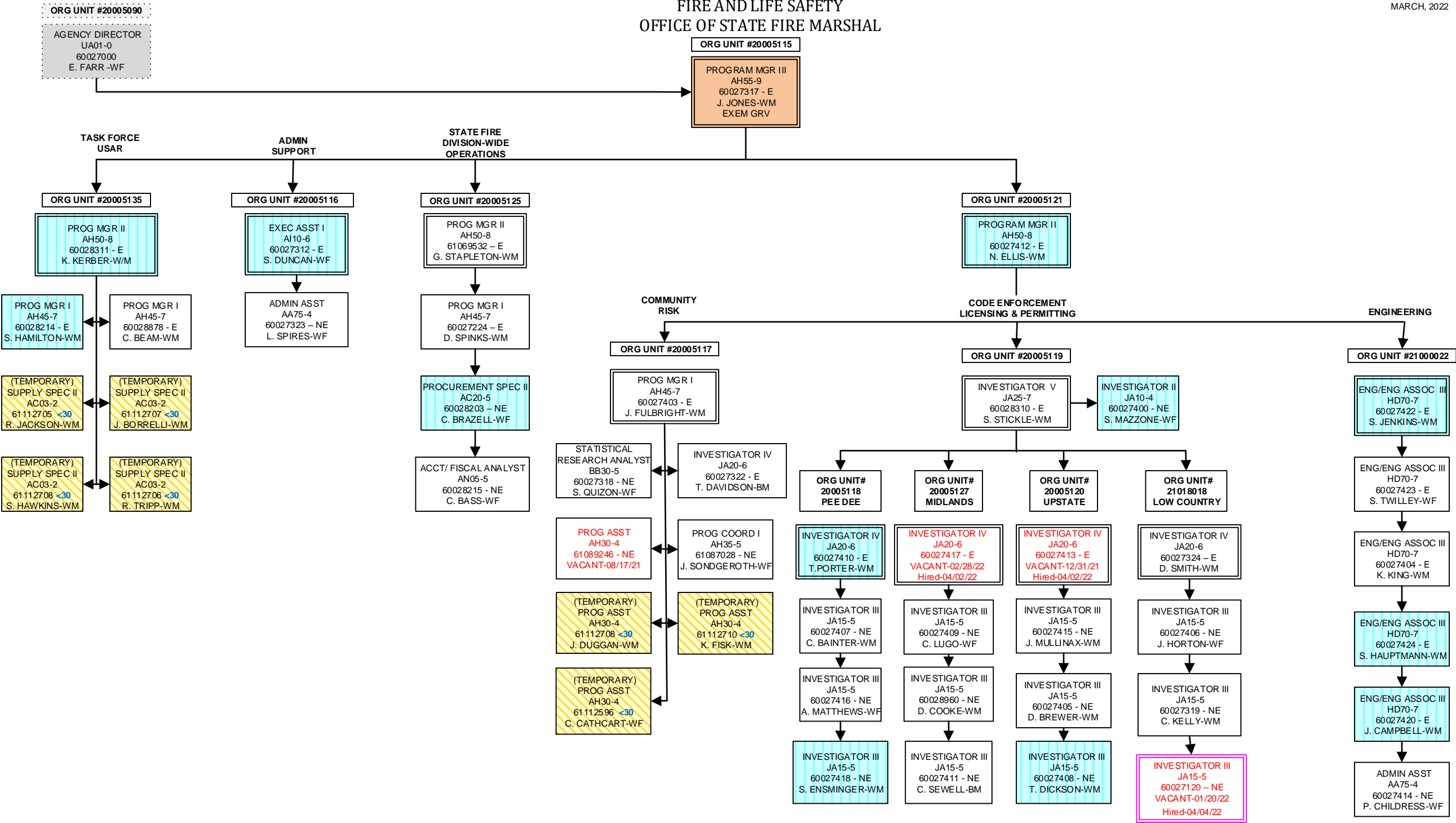
DIVISION OF OPERATIONS TECHNOLOGY AND SECURITY (DOTS)

MARCH, 2022



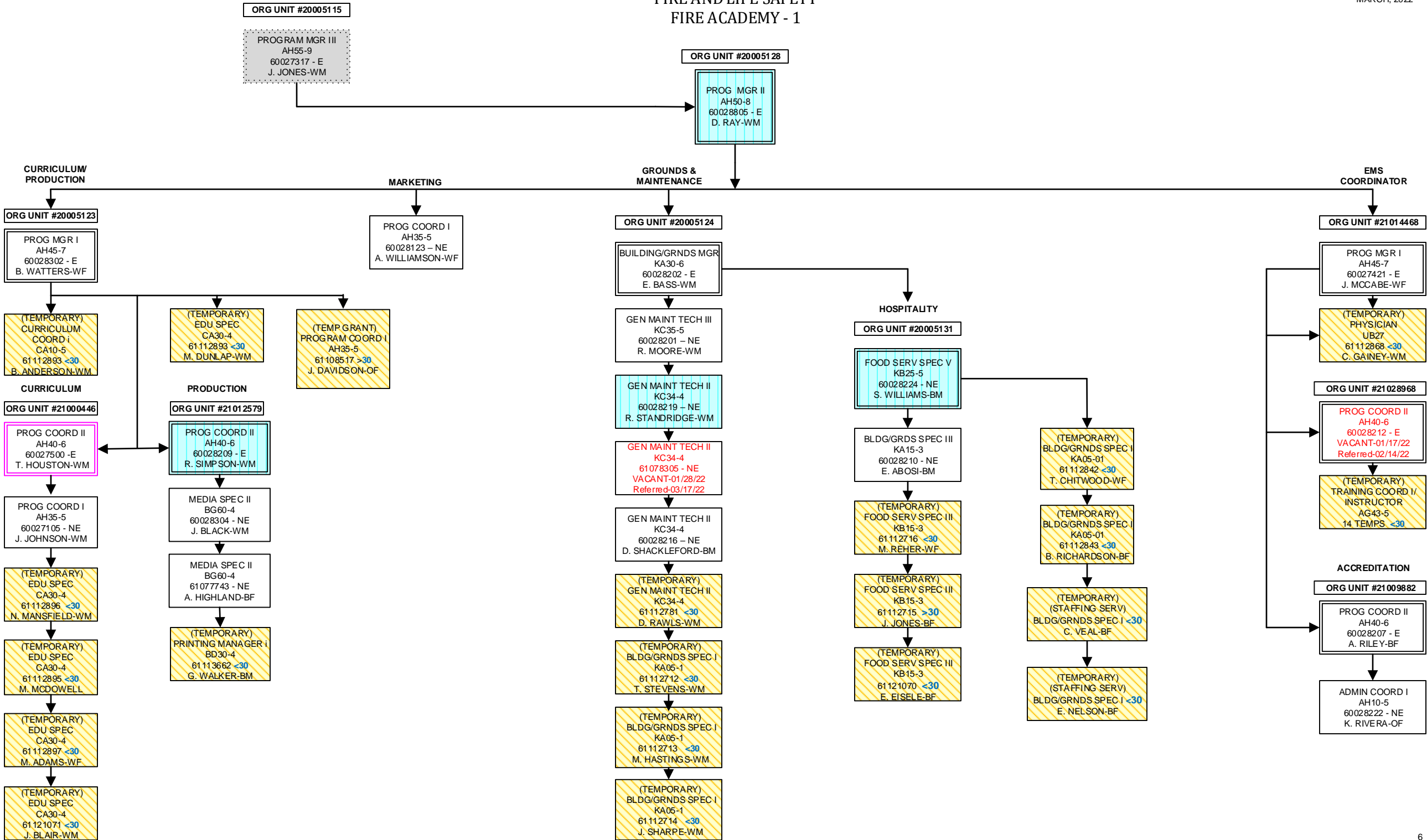
FIRE AND LIFE SAFETY
OFFICE OF STATE FIRE MARSHAL

MARCH, 2022



FIRE AND LIFE SAFETY
FIRE ACADEMY - 1

MARCH, 2022



FIRE AND LIFE SAFETY
FIRE ACADEMY -2

ORG UNIT #20005115

PROGRAM MGR III
AH55-9
60027317 - E
J. JONES-WM

ORG UNIT #20005128

PROG MGR II
AH50-8
60028805 - E
D. RAY-WM

TRAINING/
INSTRUCTION

ORG UNIT #20005133

PROG MGR I
AH45-7
60028305 - E
T. BROWN-BM

ADMINISTRATION

ORG UNIT #20005122

ADMIN COORD I
AH10-5
60028217 - E
S. BUSH-BF

ADMIN ASST
AA75-4
60028303 - NE
O. STALEY-BF

ADMIN ASST
AA75-4
60028213 - NE
G. EVANS-BF

ADMIN ASST
AA75-4
60028211 - NE
K. BRANTNER-WF

REGIONAL

ORG UNIT #20005126

PROG COORD II
AH40-6
60028204 - E
E. ADAMS-WM

SPECIAL OPERATIONS

ORG UNIT #21024393

PROG COORD II
AH40-6
60028206 - E
J. HEADRICK-WM

(TEMPORARY)
FSO I
JC60-4
17 TEMPS
FSO II
JC70-5
1 TEMPS

RESIDENT

ORG UNIT #20005130

PROG COORD II
AH40-6
60028223 - E
K. WATSON-BF

PROG COORD I
AH35-5
60028208 - NE
J. CHARLESTON-BM

PROG COORD I
AH35-5
60028301 - NE
VACANT-07/09/21
Hired-04/18/22

PROG COORD I
AH35-5
60028952 - NE
D. CRAPE-BM

ORG UNIT #21027658

PROG COORD I
AH35-5
60028200 - E
C. MILES-WM

PROG COORD I
AH35-5
60028124 - NE
E. SCHULER-BM

ORG UNIT #20005129
REGION 1 GREENVILLE

PROG COORD I
AH35-5
60028221 - E
D. DUNCAN-WM

(TEMPORARY)
ADMIN ASST
AA75-4
611132219 <30
H. WHISMAN -WF

(TEMPORARY)
FSO I
JC60-4
19 TEMPS
FSO II
JC70-5
4 TEMPS

ORG UNIT #21011927
REGION 2 YORK CO.

PROG COORD I
AH35-5
60028122 - E
J. MCCARLEY-WM
EXEM GRV

(TEMPORARY)
ADMIN ASST
AA75-4
61113140 <30
G. CIBBARELLI -WF

(TEMPORARY)
FSO I
JC60-4
19 TEMPS

ORG UNIT #20005132
REGION 3 FLORENCE

PROG COORD I
AH35-5
60028300 - E
E. JOYCE-WF

(TEMPORARY)
FSO I
JC60-4
16 TEMPS
FSO II
JC70-5
1 TEMP

ORG UNIT #21024097
REGION 4 HORRY

PROG COORD I
AH35-5
60028205 - E
E. FIFYAW-WM

(TEMPORARY)
ADMIN ASST
AA75-4
61113375 <30
H. GASQUE-WF

(TEMPORARY)
EDU SPEC
CA30-4
61113379 <30
K. NIEUWENHUIS

(TEMPORARY)
FSO I
JC60-4
18 TEMPS

ORG UNIT #21001228
REGION 5 CHARLESTON

PROG COORD I
AH35-5
60028121 - E
E. BOLEN-WM

(TEMPORARY)
ADMIN ASST
AA75-4
61121349 <30
J. BEACH-WF

(TEMPORARY)
FSO I
JC60-4
18 TEMPS
FSO II
JC70-5
3 TEMPS

ORG UNIT #21011926
REGION 6 AIKEN

PROG COORD I
AH35-5
60028307 - E
M. TURNER-WF

(TEMPORARY)
ADMIN ASST
AA75-4
61113101 <30
L. WAY-WF

(TEMPORARY)
FSO I
JC60-4
11 TEMPS
FSO II
JC70-5
1 TEMPS

ORG UNIT #21024098
REGION 7 ANDERSON

PROG COORD I
AH35-5
60028220 - E
W. CRAFT-WM

(TEMPORARY)
ADMIN ASST
AA75-4
61113085 <30
C. POPHAM-WF

(TEMPORARY)
FSO I
JC60-4
19 TEMPS
FSO II
JC70-5
2 TEMP

(TEMPORARY)
EQUIP OPER III
KD45-3
61113252 <30
J. WHITE-WM

(TEMPORARY)
EQUIP OPER III
KD45-3
61111292 <30
V. GILLERSON-BM

(TEMPORARY)
FSO I
JC60-4
9 TEMPS
FSO II
JC70-5
6 TEMPS

(TEMPORARY)
FSO I
JC60-4
5 TEMPS

PROFESSIONAL AND OCCUPATIONAL LICENSING
OFFICE OF BOARD SERVICES - BUILDING AND BUSINESS BOARDS

POL SPECIAL PROJECTS

ORG UNIT #21026869

PROG MGR II
AH50-8
60028956 - E
VACANT-11/29/21

PROG COORD II
AH40-6
60027311 - E
VACANT-11/15/21

OPERATIONAL
MANAGEMENT

BOARD OF BARBER EXAMINERS
BOARD OF COSMETOLOGY
MESSAGE THERAPY PANEL

ORG UNIT #21001078

PROG COORD II
AH40-6
60029304 - E
R. SCHILL-WF

ADMIN ASST
AA75-4
60027313 - NE
B. BEAN-WM

ADMIN ASST
AA75-4
60029039 - NE
K. NAIK-OF

ADMIN ASST
AA75-4
60028875 - NE
G. JONES-BF

ADMIN ASST
AA75-4
60028516 - NE
L. GIBSON-WF

(TEMPORARY)
(STAFFING SERV)
ADMIN ASST
AA75-4 >30
E. DAVIS-BF

(TEMPORARY)
(STAFFING SERV)
ADMIN ASST
AA75-4 >30
J. JAMES-BF

ORG UNIT #21019795

PROG COORD I
AH35-5
60029118 - NE
W. ELROD-WF

ADMIN ASST
AA75-4
60028418 - NE
J. HEYWARD-BF

ADMIN ASST
AA75-4
60029034 - NE
A. MORRIS-BF

(TEMPORARY)
(STAFFING SERV)
ADMIN ASST
AA75-4 >30
B. MONTS-WF

(TEMPORARY)
(STAFFING SERV)
ADMIN ASST
AA75-4 >30
J. TOATLEY-BF

ADMIN ASST
AA75-4
61069397 - NE
V. ENGLISH-BF

(TEMPORARY)
(STAFFING SERV)
ADMIN ASST
AA75-4 >30
S. CALLOWAY-BF

(TEMPORARY)
(STAFFING SERV)
ADMIN ASST
AA75-4 >30
M. TAYLOR-BF

(TEMPORARY)
(STAFFING SERV)
ADMIN ASST
AA75-4 >30
S. GOSSETT-BF

(TEMPORARY)
(STAFFING SERV)
ADMIN ASST
AA75-4 >30
I. JONES-BF

(TEMPORARY)
(STAFFING SERV)
ADMIN ASST
AA75-4 >30
K. CORNISH-WILSON-BF

ORG UNIT #20005180

PROG MGR I
AH45-7
60028890 - E
T. BROWN-BF

ADMIN COORD I
AH10-5
60029040 - NE
K. BROOKS-BF

ORG UNIT #21010919
PROG COORD I
AH35-5
60028882 - E
P. DEAS-BF

PROG ASST
AH30-4
60029037 - NE
L. RAULERSON-WF

ADMIN ASST
AA75-4
60028809 - NE
VACANT-01/04/22
Referred-02/18/22

ADMIN ASST
AA75-4
60028816 - NE
R. DEVINE-BF

ADMIN ASST
AA75-4
60029113
T. ALLEN-WF

ADMIN ASST
AA75-4
60028808 - NE
VACANT-03/15/22
Referred-03/23/22

ADMIN ASST
AA75-4
60028824 - NE
E. ANDERSON-BF

ADMIN ASST
AA75-4
61096531 - NE
A. SLOAN-WF

ADMIN COORD I
AH10-5
60028895 - NE
W. COOKE-WF

CONTRACTORS
BOARD

ORG UNIT #21008605

PROG COORD I
AH35-5
60027306 - NE
R. JACKSON-BF

ADMIN ASST
AA75-4
60028810 - NE
B. ENGLISH-BF

ADMIN ASST
AA75-4
60028955 - NE
Y. BARNES-BF

ADMIN ASST
AA75-4
60028806 - NE
C. DAVIS-BF

ADMIN ASST
AA75-4
60028813 - NE
K. CLARK-BF

ADMIN ASST
AA75-4
61078763 - NE
K. CORSON-WF

ORG UNIT #21023070

PROG ASST
AH30-4
60028964 - NE
Z. CHINWALLA-AM

PROG COORD II
AH40-6
60028421 - E
M. SMITH-WF

PROG COORD I
AH35-5
60028959 - NE
T. MARTIN-WF

PROG ASST
AH30-4
60028966 - NE
C. VARN-BF

ADMIN ASST
AA75-4
60028963 - NE
C. SHATZER-AF

(TEMPORARY)
INVESTIGATOR IV
JA20-6
61112548 <30
R. SPIKER-WM

BOARD OF LP GAS
BOARD OF PYROTECHNIC SAFETY
BUILDING CODES COUNCIL
BOARD OF MANUFACTURED HOUSING

ORG UNIT #20005170

PROG MGR I
AH45-7
60028602 - E
M. PRICE-WF

BOARD OF ENGINEERS & SURVEYORS
BOARD OF ARCHITECTURAL EXAMINERS

ORG UNIT #20005169

PROG MGR I
AH45-7
60027419 - E
L. ADDISON-MILES-BF

ORG UNIT #21012271

PROG COORD I
AH35-5
60028954 - E
A. DEBORDE-WF

PROG ASST
AH30-4
61031255 - NE
K. WILSON-BF

PROG ASST
AH30-4
60028958 - NE
G. TUTTLE-WF

ADMIN ASST
AA75-4
60029124 - NE
VACANT-01/07/22
Referred-04/07/22

BOARD OF GEOLOGISTS
ENVIRONMENTAL CERTIFICATION BOARD
BOARD OF FORESTERS
LANDSCAPE ARCHITECTURAL BOARD
SOIL CLASSIFIERS COUNCIL

ORG UNIT #21005153

PROG MGR I
AH45-7
60027321 - E
P. DUNKIN-WF

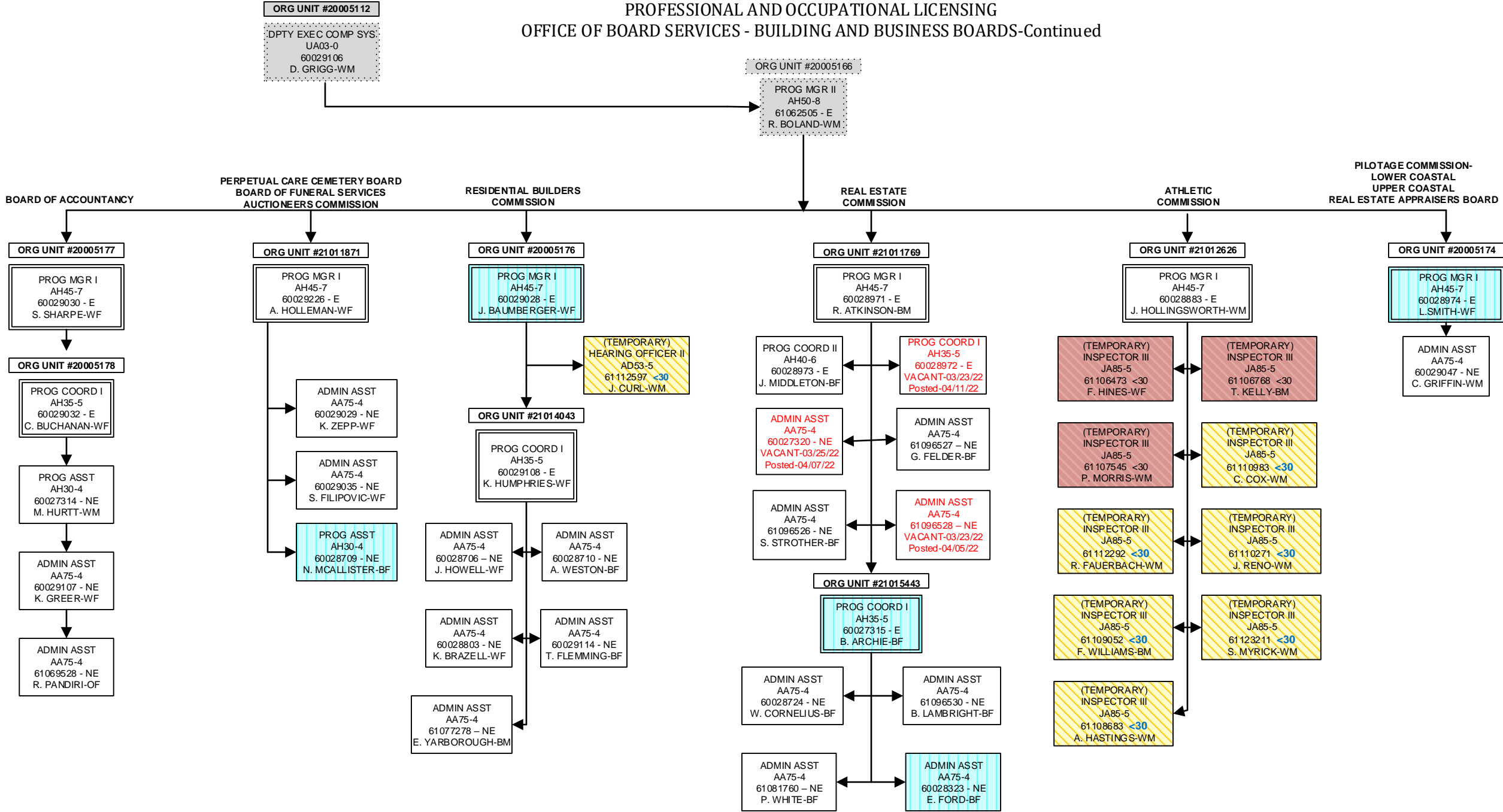
ORG UNIT #21016593

PROG COORD I
AH35-5
60028968 - E
J. ROSE-BM

PROG ASST
AH30-4
60014261 - NE
S. MOORER-WF

ADMIN ASST
AA75-4
60028800 - NE
T. WILLIAMS-BF

PROFESSIONAL AND OCCUPATIONAL LICENSING
OFFICE OF BOARD SERVICES - BUILDING AND BUSINESS BOARDS-Continued





OFFICE OF INVESTIGATIONS AND ENFORCEMENT

MARCH, 2022

