

Title: **Gov. Haley requests feds to not send Syrian refugees to SC**
 Author: RON BARNETT RBARNETT@GREENVILLENEWS.COM
 Size: 59.36 square inch
 Greenville, SC Circulation: 113473



Gov. Haley requests feds to not send Syrian refugees to SC

Letter to Kerry questions ability to thoroughly vet new arrivals

RON BARNETT

RBARNETT@GREENVILLENEWS.COM

Gov. Nikki Haley sent a letter to Secretary of State John Kerry on Monday saying she questions the ability of federal agents to thoroughly vet Syrian refugees.

"Therefore, until I can be assured that all potential refugees from Syria have no ties to terrorist organizations, I am requesting that the State Department not resettle any Syrian refugees in South Carolina," wrote Haley, who has been supportive of refugee resettlement in the state.

Haley was one of more than a dozen Republican governors who made such pronouncements Monday.

In the aftermath of the deadly terrorist attacks in Paris last week, and questions over the possibility of one of the attackers having entered France as a Syrian refugee, several legislators sent letters to the governor urging her to push back against efforts to relocate Syrians in South Carolina.

The two resettlement agencies operating in the state have said they are not approved to receive Syrians, although one of them, in Columbia, said that could change before

the end of 2016.

A Haley spokesman has said the governor can't prevent refugees from being resettled through federally approved agencies.

"The international Islamic terrorist organization the Islamic State has openly bragged that they have an ongoing operation to insert trained terrorists into Western democracies by mixing them with the horde of refugees coming out of the war-torn Middle East and North Africa," Sen. Lee Bright and Reps. Mike Burns and Bill Chumley of Greenville and Spartanburg counties wrote in a letter to the governor Monday.

"We hope you will agree that we can no longer continue to ignore the threat to our country posed by these radicals," they added. "While we can never expect President Barack Obama to alter his leftist ideological strate-

gy, the state of South Carolina must do everything in our power to halt this potential inva-

sion."

Meanwhile, the Islamic Society of Greenville condemned the "horrific crimes" committed by terrorists in France and said the attackers were not acting in accord with the principles of Islam.

"Killing of innocent lives is not supported by any religion, let alone Islam, which has so clearly condemned in many verses in Quran," a statement released by the Muslim organization says. "This kind of irrational ideology is as foreign to us as it is to any civilized human being belonging to any religion or any school of thought."

Concerns over the possibilities of terrorists slipping into South Carolina under the guise of refugees stems in part from a lack of background information available on Syrians as they flee from their war-torn nation, a point U.S. Rep. Jeff Duncan made frequently prior to last Friday's attacks.

On Monday, he issued a statement calling on President Obama to "immediately halt" the resettlement of any refugees

from Syria, and other countries with known radical Islamic terrorist cells, "at least until ISIS has been defeated and an improved refugee vetting process has been established."

"This is a chilling reminder to Europe and the United States that open border policies endanger our communities," the 3rd District Republican said. "Islamic extremists will continue to infiltrate and radicalize citizens living within our borders with the goal of committing acts of terror and intimidation."

U.S. Rep. Trey Gowdy of Spartanburg, chairman of the House Immigration and Border Security Subcommittee, announced plans to examine the Syrian refugee crisis in a hearing on Thursday.

"While America has a proud history of providing refuge for those who have been persecuted for their beliefs or otherwise face imminent harm, we have a duty to ensure the necessary background investigations can be done to stop terrorists from ex-

Title: **Gov. Haley requests feds to not send Syrian refugees to SC**
 Author: RON BARNETT RBARNETT@GREENVILLENEWS.COM
 Size: 59.36 square inch
 Greenville, SC Circulation: 113473

exploiting Americans' generosity and ruthlessly taking more innocent lives," he said.

Sen. Lindsey Graham, who has made defeating radical Islam the centerpiece of his flagging campaign for the Republican nomination for president.

"The one thing I've learned from Paris is that we need to have a timeout on bringing refugees into this country until we have a system that we think will work," he said in a statement released by his office.

Also, Sen. Tim Scott has called on Obama to suspend admission of Syrian refugees.

"My heart goes out to those families directly impacted by the crisis in Syria, however in absence of a fail-proof system, we simply cannot put American lives at risk."

**"I am requesting
that the State
Department not
resettle any Syrian
refugees in South
Carolina."**

S.C. GOV. NIKKI HALEY



**Gov. Nikki
Haley**

Title: **Governor asks for streamlining of federal farm aid**

Author:

Size: 10.07 square inch

Hilton Head Island, SC Circulation: 20015



Governor asks for streamlining of federal farm aid

The (Columbia) State

Gov. Nikki Haley is asking the U.S. Department of Agriculture to eliminate some bureaucratic requirements such as harvesting worthless crops to speed up aid to Palmetto State farmers.

“No South Carolina farmer that entered this fall with proper crop insur-

ance and a viable business should lose that business solely because of this flood,” Haley said in a letter to Agriculture Secretary Thomas Vilsack.

Losses in South Carolina’s top industry from the flood have swelled to \$587 million, the state’s agriculture officials have said.

Farmers already faced a down year

because of a late freeze and a summer drought, officials told the state House Ways and Means committee recently.

But Haley said beleaguered farmers are being required to harvest under-valued crops “at a significant expense,” perhaps costing more to harvest the crop than it is worth.

Title: **County officials consider refugees**
 Author: By ZACH MURDOCK zmurdock@islandpacket.com 843-706-8147
 Size: 40.45 square inch
 Hilton Head Island, SC Circulation: 20015



County officials consider refugees

A proposed resolution would join other South Carolina counties in opposing any resettlement plans.

By ZACH MURDOCK

zmurdock@islandpacket.com
 843-706-8147

Beaufort County could be the next to join the growing roster of S.C. communities that oppose the resettlement of Middle Eastern refugees.

County Councilwoman Cynthia Bensch has asked the council to consider a resolution asking Gov. Nikki Haley and the S.C. Department of Social Services to issue a cease and desist order against any refugee resettlement and asked the local legislative delegation to do the same.

The letter cites a series of "vital issues" affecting the refugee program, including national security, immigration, public health and "religious freedom," according to the draft resolution.

"There are other countries more capable than the United States, at this point in time, that should be taking their own people. This is their culture," Bensch said Monday. "America cannot afford to continue to put itself in harm's way for the sake of goodwill. We're beyond

that."

Last week, Haley joined 30 other governors nationwide in announcing that they would block Syrian refugees coming to their state following the deadly attacks in Paris amid fears that Islamic State soldiers could slip through the federal refugee vetting process.

Haley sent a letter Monday to

Please see REFUGEES on 5A

REFUGEES

Continued from 3A

Secretary of State John Kerry requesting that no Syrians be brought to South Carolina, according to The Associated Press.

Berkeley, Greenville, Pickens and Spartanburg county councils have all passed resolutions similar to Bensch's over the past month amid some residents' concerns.

"I think we should follow the other counties who felt it was necessary to be very clear to the governor on

where our county stands," Bensch said. "I'm glad (Haley) understands it and has taken her position, but I think it's important to the citizens of Beaufort County to show that certain County Council officials understand the importance of addressing this in a public forum."

The resolution could be considered by council as early as next week. It was scheduled for its first discus-

sion at Monday morning's meeting of the council's Governmental Committee, but a quorum was not present, so the discussion was delayed.

The proposal is already under fire.

The S.C. American Civil Liberties Union is condemning the counties that are passing and pursuing the resolutions, said its director Victoria Middleton.

"It's just regrettable, be-

cause obviously Americans watched the unfolding tragedy in Paris, and we feel for people there. It makes us all feel more vulnerable," Middleton said. "But to simply say we're going to deny entry to people from an entire nationality or religion ... it's un-American."

Bensch argues the measures are not designed to discriminate. Instead, she says they raise concerns

Title: **County officials consider refugees**
Author: By ZACH MURDOCK zmurdock@islandpacket.com 843-706-8147
Size: 40.45 square inch
Hilton Head Island, SC Circulation: 20015

about the possibility that members of the Islamic State could lie through the refugee vetting process.

No Syrian refugees have been resettled in South Carolina, according to the federal Office of Refugee Resettlement. Last year, 121 refugees were brought to the state, but most were from Burma and Congo.

The issue has become so emotionally charged and divisive, the council will be painted into a corner no matter what it decides about the resolution, said County Council Vice Chairman Jerry Stewart.

“What do we have to gain by taking up that issue? We don’t have any say in it,” he said. “Our governor has come out against it. I just don’t see it’s an issue that the local council needs to address.”

Follow reporter Zach Murdock at twitter.com/IPBG_Zach and at facebook.com/IPBGZach.

Title: **County officials consider refugees**
 Author: By ZACH MURDOCK zmurdock@islandpacket.com 843-706-8147
 Size: 39.68 square inch
 Beaufort, SC Circulation: 11269



County officials consider refugees

A proposed resolution would join other South Carolina counties in opposing any resettlement plans.

By ZACH MURDOCK

zmurdock@islandpacket.com
 843-706-8147

Beaufort County could be the next to join the growing roster of S.C. communities that oppose the resettlement of Middle Eastern refugees.

County Councilwoman Cynthia Bensch has asked the council to consider a resolution asking Gov. Nikki Haley and the S.C. Department of Social Services to issue a cease and desist order against any refugee resettlement and asked the local legislative delegation to do the same.

REFUGEES

Continued from 3A

Secretary of State John Kerry requesting that no Syrians be brought to South Carolina, according to The Associated Press.

Berkeley, Greenville, Pickens and Spartanburg county councils have all passed resolutions similar to Bensch's over the past month amid some residents' concerns.

"I think we should follow the other counties who felt it was necessary to be very

The letter cites a series of "vital issues" affecting the refugee program, including national security, immigration, public health and "religious freedom," according to the draft resolution.

"There are other countries more capable than the United States, at this point in time, that should be taking their own people. This is their culture," Bensch said Monday. "America cannot afford to continue to put itself in harm's way for

the sake of goodwill. We're beyond that."

Last week, Haley joined 30 other governors nationwide in announcing that they would block Syrian refugees coming to their state following the deadly attacks in Paris amid fears that Islamic State soldiers could slip through the federal refugee vetting process.

Haley sent a letter Monday to

Please see REFUGEES on 5A

clear to the governor on where our county stands," Bensch said. "I'm glad (Haley) understands it and has taken her position, but I think it's important to the citizens of Beaufort County to show that certain County Council officials understand the importance of addressing this in a public forum."

The resolution could be considered by council as early as next week. It was scheduled for its first discus-

sion at Monday morning's meeting of the council's Governmental Committee, but a quorum was not present, so the discussion was delayed.

The proposal is already under fire.

The S.C. American Civil Liberties Union is condemning the counties that are passing and pursuing the resolutions, said its director Victoria Middleton.

"It's just regrettable, because obviously Americans

watched the unfolding tragedy in Paris, and we feel for people there. It makes us all feel more vulnerable," Middleton said. "But to simply say we're going to deny entry to people from an entire nationality or religion ... it's un-American."

Bensch argues the measures are not designed to discriminate. Instead, she says they raise concerns

Title: **County officials consider refugees**
Author: By ZACH MURDOCK zmurdock@islandpacket.com 843-706-8147
Size: 39.68 square inch
Beaufort, SC Circulation: 11269

about the possibility that members of the Islamic State could lie through the refugee vetting process.

No Syrian refugees have been resettled in South Carolina, according to the federal Office of Refugee Resettlement. Last year, 121 refugees were brought to the state, but most were from Burma and Congo.

The issue has become so emotionally charged and divisive, the council will be painted into a corner no matter what it decides about the resolution, said County Council Vice Chairman Jerry Stewart.

“What do we have to gain by taking up that issue? We don’t have any say in it,” he said. “Our governor has come out against it. I just don’t see it’s an issue that the local council needs to address.”

Follow reporter Zach Murdock at twitter.com/IPBG_Zach and at facebook.com/IPBGZach.



Title: **Easley receives \$250,000 grant toward \$500,000 Doodle Trailhead project**
 Author: RON BARNETT RBARNETT@GREENVILLENEWS.COM
 Size: 51.92 square inch
 Greenville, SC Circulation: 113473

LARRY BAGWELL, EASLEY MAYOR

Easley receives \$250,000 grant toward \$500,000 Doodle Trailhead project

RON BARNETT

RBARNETT@GREENVILLENEWS.COM

Plans for Easley's Doodle Trailhead are on the fast track, with the city receiving word that a matching grant of more than \$250,000 has been approved toward the project that will create a small park at the trail's end, the mayor said Monday.

"We're looking forward to getting it started as soon as possible," Mayor Larry Bagwell said.

A letter from Gov. Nikki Haley informed the city that a \$250,732 grant has been approved through the Appalachian Regional Commission for the project.

The city will match that amount out of hospitality tax revenues, Bagwell said.

The more than one-acre trailhead site is at the Fleetwood Drive terminus of the recreational trail that connects Easley and Pickens.

The "Doodle Head," as the city is calling it, will include a picnic shelter, a paved nature trail, a playground – and two boxcars that will be moved from their current location at the Pickens trailhead, Bagwell said.

One of the boxcars may be renovated for use as a restroom, he said.

Plans also call for adding 25-30 parking spaces at the site.

The city has been working with Alta Planning + Design, which developed the plans for the trail, on creating a concept for the trailhead. Bagwell said he hopes to put the project out for bids soon.

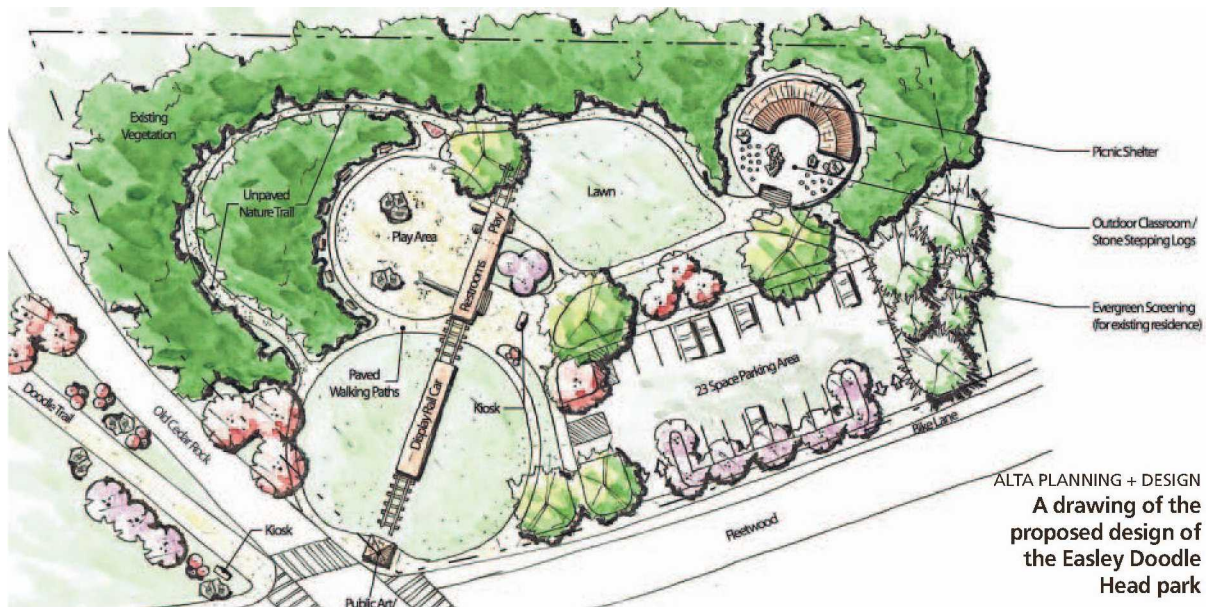
The city also is continuing to work on a plan to extend the trail from the Doodle Head to downtown, Bagwell said.

The city of Pickens also has been planning its trailhead, at the site of the former train station at the terminus of what once was called the Pickens Doodle Line.

It's looking at a \$2.4 million plan that includes tearing down the old deteriorated depot, renovating a locomotive and rail car, building a community building and creating several outdoor recreation features. Pickens also is hoping for grant money to help cover the costs.

The two cities bought the old railroad and converted it to an eight-mile walking, bicycling trail that opened on Memorial Day weekend.

Title: **Easley receives \$250,000 grant toward \$500,000 Doodle Trailhead project**
 Author: RON BARNETT RBARNETT@GREENVILLENEWS.COM
 Size: 51.92 square inch
 Greenville, SC Circulation: 113473



“We’re looking forward to getting it started as soon as possible.”

Title: **Clemson, AIG will partner**
 Author: RUDOLPH BELL DBELL@GREENVILLENEWS.COM
 Size: 48.67 square inch
 Greenville, SC Circulation: 113473



Clemson, AIG will partner

Training site for risk engineering, analytics operation planned

RUDOLPH BELL
DBELL@GREENVILLENEWS.COM

Teams of engineers will travel regularly to Greenville for training as part of a broad new partnership between Clemson University and American International Group Inc.

AIG, the insurance giant of bailout fame, has provided an initial \$4 million to establish a risk engineering and analytics center at Clemson and endow a professorship in the field, the company and university announced Thursday.

The partnership is also likely to include a 35-employee analytics operation at Clemson's International Center for Automotive Research in Greenville, said James Martin, chairman of the university's civil engineering department.

The operation would be housed in an office building under construction at ICAR, said Martin, who is also director of the new center.

Martin said the operation would analyze insurance claim data from around the world on behalf of AIG's casualty business.

Martin said he's already secured 5,000 square feet of office space in the building under construction at ICAR and has asked for another 5,000 square

feet.

He said AIG is expected to sign a contract to fund the operation in two weeks.

One employee, Paris Stringfellow, has already been hired to direct the program and all 35 employees should be on Clemson's payroll by the end of the year, Martin said.

Martin said insurers use risk engineering and systems analytics to find trends in "big data" – knowledge they can use to cut risk and save money on claims.

The field can also help insurers develop new services to sell, he said.

Martin said about 20 people, a mix of existing Clemson personnel and new hires, are already doing work for AIG on the university's main campus as part of the new center.

The multi-disciplinary group is housed in various buildings and is using Clemson's supercomputer to conduct risk analysis, modeling windstorms, floods, earthquakes and supply chains, he said.

Martin said the training program will bring teams of about 20 engineers from around the world to Greenville for five days at a time, up to 48 weeks a year.

The first team arrived Monday for classroom work in the

offices of Clemson's MBA school downtown, he said, and spent a day in field training at the university's advanced materials center in Anderson County.

Clemson standardized training for AIG and developed 25 to 30 customized virtual simulation training modules, Martin said.

He said Clemson has developed four certificate programs related to various aspects of the field of risk engineering and systems analytics and is working on a master's degree.

Martin said Clemson should fill the endowed professorship in about a week. It will be named for Robert Benmosche, AIG's former president and chief executive officer.

AIG said the center will "enhance the understanding of risk and ways to mitigate it."

"Its mission will be to create a next-generation workforce skilled in risk engineering and systems analytics, develop innovative technology-based tools to mitigate risk exposure, and facilitate the use of big data to make critical decisions," the company said in a news release.

AIG and Clemson will "continue to explore ways to expand their partnership and collaboration," the company said.

AIG said the Clemson center would complement its hiring of 500 risk engineers and

Clemson "is a critical part of AIG's strategy ..."

JOHN DOYLE
AIG CHIEF EXECUTIVE

its building an engineering and analytics center of excellence in Bangalore, India.

John Doyle, chief executive of AIG's commercial insurance unit, said the collaboration with Clemson is "a critical part of AIG's strategy to serve as a valued advisor to clients who are managing increasingly complex risks."

The endowed professorship will "develop curriculum and educational programs in the field of risk engineering and analytics, cultivate scientific investigation and research, recruit world-class faculty and create marketable technologies that advance the field," AIG said in the news release.

Martin said George Stratts, president of AIG's global property insurance business, is scheduled to visit Clemson's main campus next week and join Gov. Nikki Haley at the Clemson/Florida State University football game to re-announce the \$4 million gift.

Title: **Easley Chamber Welcomes Bobby Hitt**

Author:

Size: 11.78 square inch

Greenville, SC Circulation: 113473



Easley Chamber Welcomes Bobby Hitt

Presented by **Tri-County Technical College**, the Greater Easley Chamber is excited to welcome South Carolina Secretary of Commerce, Robert “Bobby” M. Hitt, III, to Easley! On Thursday, November 12, Secretary Hitt will provide an overview of the economic development efforts taking place across the state of South Carolina. The event is set for 11:45 AM – 1:00 PM at DunBurks Premier Events in Easley.



A native of Charleston and graduate of the University of South Carolina, Robert “Bobby” M. Hitt III was appointed by Governor Nikki Haley to serve as Secretary of Commerce in January 2011. Hitt, the previous manager of corporate affairs at the BMW Manufacturing Company in Spartanburg, brings a wealth of economic development experience to the Department of Commerce and has personally worked with the previous five commerce secretaries. For event registration details, call the Chamber office at 864-859-2693 or visit www.easleychamber.org.

Title: **Dems calling for apology over election email**
 Author: By MATT McNAB mmc nab@islandpacket.com 843-706-8125
 Size: 48.05 square inch
 Beaufort, SC Circulation: 11269



Dems calling for apology over election email

Board official says missive was not ethics rule violation

By MATT McNAB

mmc nab@islandpacket.com
 843-706-8125

An email sent by Beaufort County's Board of Elections chairman in October urging fellow Republican Party members to get involved in the party's push toward the 2016 election did not constitute an ethics violation, according to a state elections commission official, but that didn't stop Democratic Party members from demanding the chairman issue an apology and recuse himself from further party matters.

Board of Elections and Voter Registration chairman Ron Clifford sent the email Oct. 6 urging his fellow Republicans to help increase voter turnout locally or even travel to other battleground states to help Republican candidates.

S.C. State Election Commission public information officer Chris Whitmire said Clifford's email did not violate state law because it did not directly involve a campaign. Election board members are prohibited from taking part in the management of a political campaign, along with making contributions to a candidate, knowingly attending a campaign event or holding a political office.

Board members who violate the law can be removed by the governor or an "appropriate authority," Whitmire said.

"There's nothing to say they can't participate in political party activity," he said. "I'm not sure it violates anything, but it pushes up against it."

"When you come on the board, we ask you to set those political connections aside," he said. "We have them ask what impact that activity might have on the public's interpretation of an election. They need to try not to engage in that type of behavior and say to themselves 'I will put my political leanings secondary to my duty on the elections board.'"

Reached Tuesday, Clifford said he did not recall sending the email. After The Island Packet provided him with a copy, he said he did not have time to review it but would read it and likely issue a comment today.

Please see EMAIL on 5A

EMAIL

Continued from 3A

Although the email Clifford sent was not an ethical or legal violation, Beaufort County Democratic Party chairman Blaine Lotz said the email "was clearly crossing the line" and called for a public apology from Clifford and a promise to refrain from political party activity in the future.

"I don't accept that from them that this is not a problem," he said. "He's telling people how to get more Republicans in office. It's worse than managing a political campaign. It's how to build up the Republican Party, and it's unacceptable."

In his email, Clifford urged local Republicans to become committeemen or presidents

at local precincts, as only eight of 27 local precincts had one. He cited data that showed only 41 percent of registered Republicans on Hilton Head Island voted in the 2012 presidential election. He said he would contact known Republicans in his neighborhood and help them either cast an absentee ballot or get to the polls.

In the closing paragraph of the email, Clifford said the party needed "to go beyond our S.C. borders to help others," including using the Hilton Head Island Republican Club to make phone calls to help Republican candidates in other states.

Whitmire said the election commission urges board

members to remove themselves from political party activity while they serve in the position to ensure the public has confidence in the outcome of elections. However, since the process is almost entirely political — the local legislative delegation typically people they know from political activity, and the governor confirms them — it can be difficult for the board member to completely remove themselves, Whitmire said.

"It's unrealistic to expect them to never be involved in the party," he said. "They can attend the meetings, but they should not be beating the bushes and getting involved. Once their time is

done on the board, they can get involved again."

Lotz said if a Democratic board member had been caught sending partisan emails, there would have been a public backlash and a request for their removal from the board. He added it was unrealistic to expect or even ask for Clifford's removal from the board, since it would require Republican Gov. Nikki Haley to make that change.

"Had a Democrat on the board done this, they would be making a ruckus," he said. "I don't want any ruckus. I just don't want him to send these emails."

Follow reporter Matt McNab at twitter.com/IPBG_Matt.

Title: **All communities must fight domestic violence in SC**

Author:

Size: 19.37 square inch

Myrtle Beach, SC Circulation: 61238



All communities must fight domestic violence in SC

Domestic violence is a pervasive problem in South Carolina. It didn't become a big problem overnight. Meaningful solutions won't come overnight, either.

It's a criminal problem, but the answers can't come exclusively from lawmakers and law enforcement.

It's a cultural problem. Solutions must come from communities. ...

That's right. What we have accepted for too long as nobody's else's business needs to be everybody's business.

"The legislature can give attention," said Ellen Hamilton, executive director of the Pee Dee Coalition Against Domestic & Sexual Assault. "It can say, 'Look at this,' but anytime there's a problem, it's got to be a communitywide one: our business community, our health care community, higher education. This starts the conversation for that.

"It's a social problem, and you look at social institutions."

One other social institution is critical.

"We're going to start connecting more with our faith community," Hamilton said.

"It's just critical. Those are our moral leaders. We need to be articulating family is critical. It's the bedrock of this culture and country. We can't expect the cops to do that or government or other people."

Government actually did a little bit this year. The legislature passed a bill that will increase penalties for repeat domestic violence offenders, based on the severity of the attack, the number of previous offenses and other factors. The new law, signed by Gov. Nikki Haley, will impose a lifetime gun ban on the worst abusers and an automatic three- or 10-year ban in other cases.

Haley also appointed a domestic violence task force that looked at the problem from several angles.

"The legislature is very attuned to domestic violence in a way they have not been before," Hamilton said. "These hearings helped them laser in on it."

But without community action, the problem won't shrink.

- The (Florence) Morning News

Title: **Increased security called for at abortion clinics**

Author: BY SEANNA ADCOX The Associated Press

Size: 9.14 square inch

Myrtle Beach, SC Circulation: 61238



Increased security called for at abortion clinics

BY SEANNA ADCOX
The Associated Press

A Democratic state representative is asking Republican Gov. Nikki Haley to increase security at the three clinics in S.C. that provide abortions following last week's deadly shootings at Planned Parenthood in Colorado.

State Rep. Mia McLeod of Columbia called on the governor Monday to coordinate with state and local law enforcement to monitor

clinics in Charleston, Columbia and Greenville.

Haley's office says the governor already is doing that. Spokeswoman Chaney Adams says officials have told Haley there are no known threats to Planned Parenthood clinics in the Southeast.

A 57-year-old former S.C. resident is accused of opening fire at a clinic in Colorado, killing three people and injuring nine others.

Planned Parenthood operates one of three clinics in S.C. that provide abortions.