

SOUTH CAROLINA  
DEPARTMENT OF LABOR, LICENSING AND REGULATION  
ORGANIZATIONAL CHART

MARCH 2017

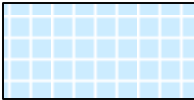
**SOUTH CAROLINA  
DEPARTMENT OF LABOR, LICENSING AND REGULATION  
ORGANIZATIONAL CHARTS**

Pink Diamond



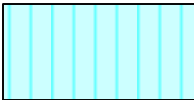
**TERI Employee**

Light Blue Square



**Employee returned after TERI  
or Retirement**

Turquoise Vertical Stripe



**Employee eligible to retire  
within 5 years by service  
or age**

White Solid Red Letters



**Vacant Position-Vacancy  
Date**

Yellow Diagonal Stripe



**Temporary Employee**

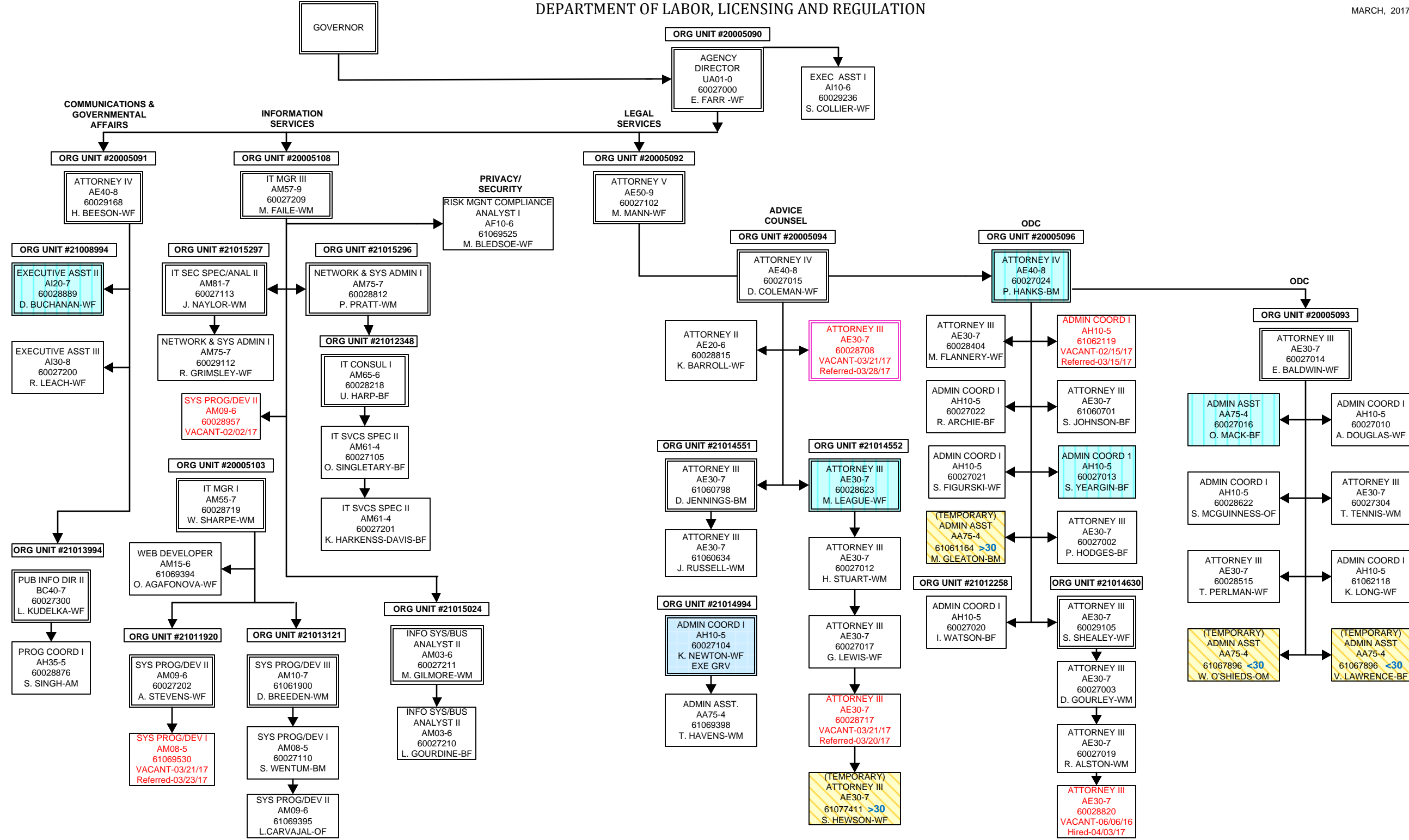
Dark Pink Outline



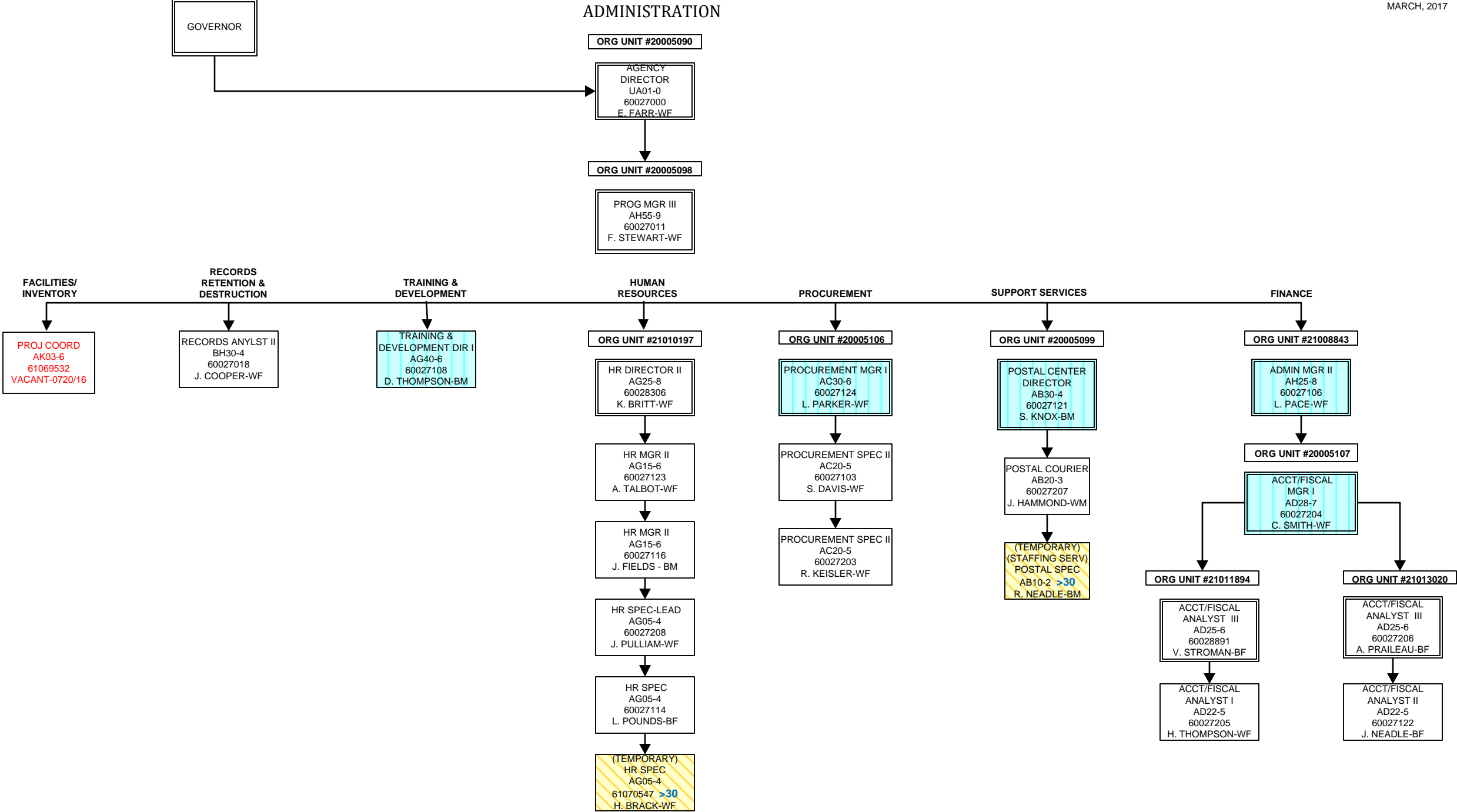
**Borrowed position**

DEPARTMENT OF LABOR, LICENSING AND REGULATION

MARCH, 2017

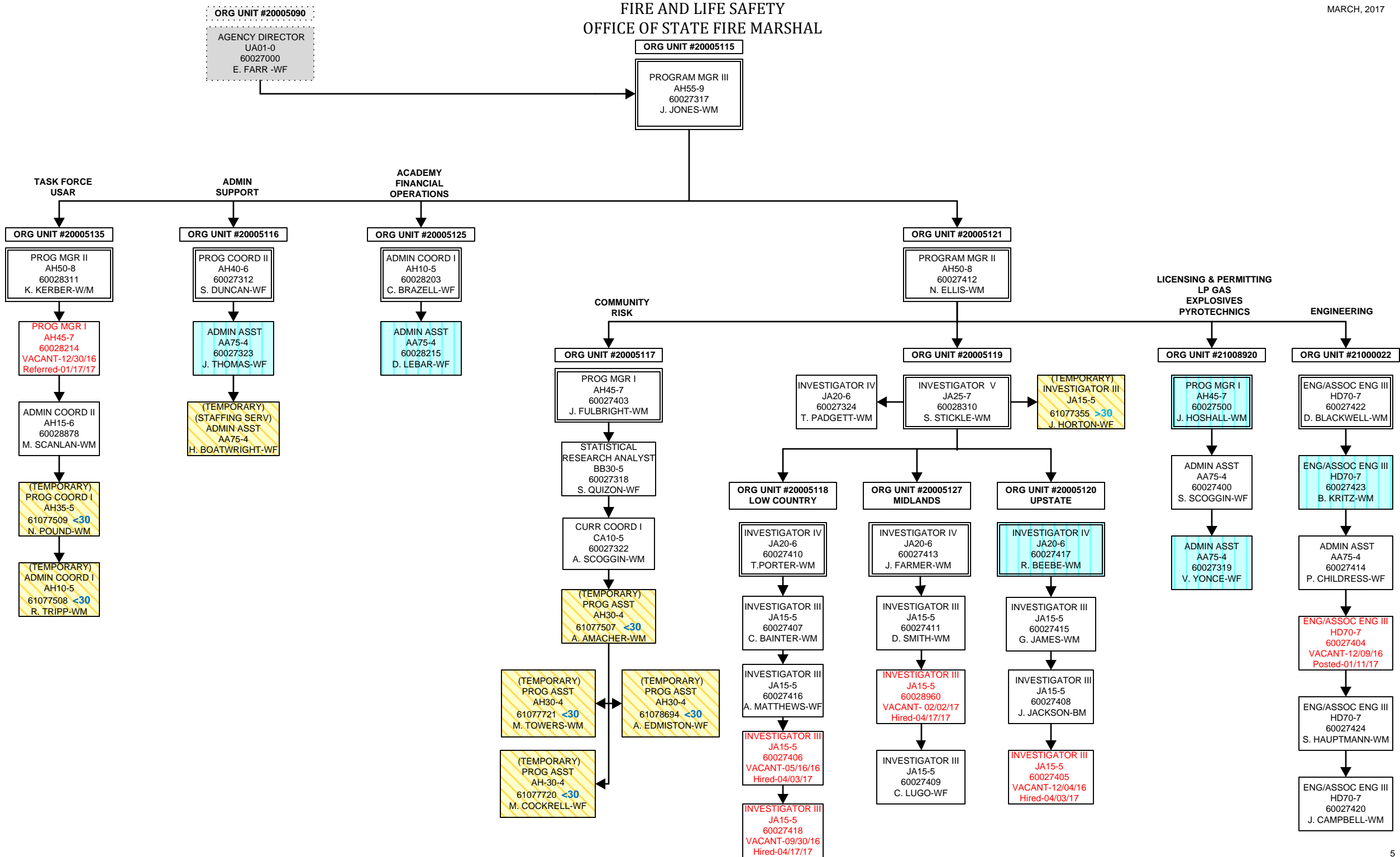


ADMINISTRATION



FIRE AND LIFE SAFETY  
OFFICE OF STATE FIRE MARSHAL

MARCH, 2017



FIRE AND LIFE SAFETY  
FIRE ACADEMY

MARCH, 2017

ORG UNIT #20005115

PROGRAM MGR III  
AH55-9  
60027314  
J. JONES-WM

ORG UNIT #20005128

ACTING  
PROG MGR II  
AH50-8  
60028805  
P. RUSSELL

GROUND  
S &  
MAINTENANCE

CURRICULUM  
ACCREDITATIONS

REGIONAL  
TRAINING

EMS  
COORDINATOR

ORG UNIT #20005124

ENG/ASSOC ENG II  
HD65-6  
60028202  
VACANT-12/12/16  
Posted-03/14/17

TRADES SPEC IV  
KC40-4  
60028123  
J. KESTER-WM

TRADES SPEC IV  
KC40-4  
60028219  
M. MONROE-WM

TRADES SPEC V  
KC50-5  
60028216  
J. GRIGGS-WM

TRADES SPEC IV  
KC40-4  
60028201  
R. MOORE-WM

(TEMPORARY)  
TRADES SPEC IV  
KC40-4  
61078305 <30  
C. OWEN-WM

(TEMPORARY)  
TRADES SPEC IV  
KC40-4  
61078306  
D. RAWLS-WM

(TEMPORARY)  
FSO II  
JC70-4  
1 TEMP

ORG UNIT #21009882

PROG MGR I  
AH45-7  
60028207  
G. SPINKS-WM

ADMIN COORD I  
AH10-5  
60028222  
K. WHITE-BF

(TEMPORARY)  
FSO II  
JC70-4  
1 TEMP

ORG UNIT #21000446

PROG COORD II  
AH40-6  
60028212  
C. BENNETT-WM

(TEMPORARY)  
EDU SPEC  
CA30-4  
61077772 <30  
D. HANSON-WM

(TEMPORARY)  
EDU SPEC  
CA30-4  
61077773 <30  
N. MANSFIELD-WM

(TEMPORARY)  
EDU SPEC  
CA30-4  
61077770 <30  
Y. MUHAMMAD-BM

ORG UNIT #20005123

CURR COORD II  
CA20-5  
60028302  
B. WATTERS-WF

(TEMPORARY)  
FSO II  
JC70-4  
A. ESPOSITO-WM

ORG UNIT #21012579

PROG COORD I  
AH35-5  
60028209  
R. SIMPSON-WM

MEDIA RESRC  
SPEC II  
BG60-4  
60028304  
J. BLACK-WM

(TEMPORARY)  
PRINTING MGR I  
BD30-4  
61077742 >30  
F. BRANDT-WM

(TEMPORARY)  
MEDIA SPEC II  
BG60-4  
61077743 >30  
A. HIGHLAND-BF

(TEMPORARY)  
MEDIA SPEC II  
BG60-4  
61077744 >30  
W. RENKIN-WM

ORG UNIT #20005122

ADMIN COORD I  
AH10-5  
60028217  
S. BUSH-BF

ADMIN ASST  
AA75-4  
60028303  
K. RIVERA-WF

ADMIN ASST  
AA75-4  
60028213  
G. EVANS-BF

ADMIN ASST  
AA75-4  
60028211  
A. ADAMS-BF

ORG UNIT #20005131

FOOD SERV SPEC V  
KB25-5  
60028224  
C. JERMSTAD-WM

BLDG/GRDS SPEC III  
KA15-3  
60028210  
S. WILLIAMS-BM

(TEMPORARY)  
FOOD SVC SPEC III  
KB15-3 <30  
D. CREPAEU-WM

ORG UNIT #21001228

PROG COORD I  
AH35-5  
60028206  
VACANT-12/12/16  
Hired-04/17/17

ADMIN ASST  
AA75-4  
60028301  
A. WILLIAMSON-WF

(TEMPORARY)  
FSO II  
JC70-4  
17 TEMPS

ORG UNIT #20005129

PROG COORD I  
AH35-5  
60028221  
D. DUNCAN-WM

ADMIN ASST  
AA75-4  
60028220  
C. BAKER-WF

(TEMPORARY)  
FSO II  
JC70-4  
31 TEMPS

ORG UNIT #21011926

PROG COORD I  
AH35-5  
60028307  
M. TURNER-WF

(TEMPORARY)  
FSO II  
JC70-4  
9 TEMPS

ORG UNIT #21011927

PROG COORD I  
AH35-5  
60028122  
J. MCCARLEY-WM  
EXEM GRV

(TEMPORARY)  
FSO II  
JC70-4  
18 TEMPS

ORG UNIT #20005132

PROG COORD I  
AH35-5  
60028300  
B. CASSIDY-WM  
EXEM GRV

ADMIN ASST  
AA75-4  
60028205  
C. CANUP-WF

(TEMPORARY)  
FSO II  
JC70-4  
22 TEMPS

(TEMPORARY)  
FSO II  
JC70-4  
61078720 <30  
61078721 <30  
61078722 <30  
61078723 <30  
61078724 <30  
61078725 <30  
61078726 <30  
61078727 <30  
61078728 <30  
61078729 <30  
VACANT-02/02/17  
Referred-03/06/17

ONSITE  
ACADEMY  
TRAINING

ORG UNIT #20005126

PROG COORD II  
AH40-6  
60028204  
R. BUSBY-WM

ORG UNIT #20005130

PROG COORD II  
AH40-6  
60028223  
T. BROWN-BM

PROG COORD I  
AH35-5  
60028121  
M. REGAL-WM

PROG COORD I  
AH35-5  
60028200  
D. CROSSLAND-WM  
EXEM GRV

(TEMPORARY)  
FSO II  
JC70-4  
12 TEMPS

PROG COORD I  
AH35-5  
60028208  
S. DAVIS-WM

PROG COORD I  
AH35-5  
60028952  
K. WATSON-UN

(TEMPORARY)  
FSO II  
JC70-4  
61077794 <30  
T.SHARPE-WM

(TEMPORARY)  
FSO II  
JC70-4  
42 TEMPS

ORG UNIT #21009052

PROG COORD I  
AH35-5  
60028124  
M. GEORGE-WM  
EXEM GRV

ORG UNIT #21014468

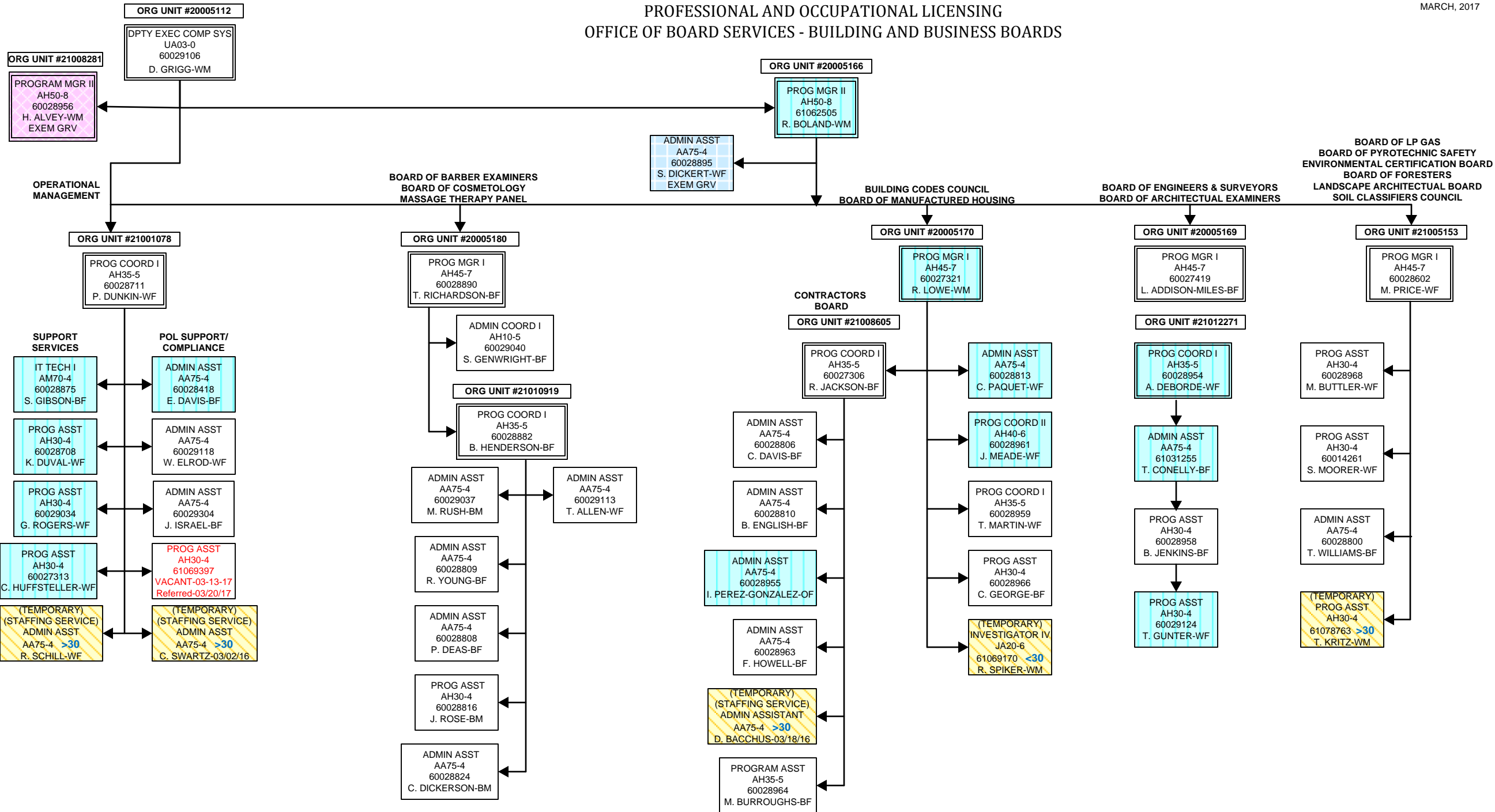
PROG MGR I  
AH45-7  
60027120  
T. WOJCIK-WM

PROG COORD II  
AH40-6  
600274721  
J. MCCONNELL-WM

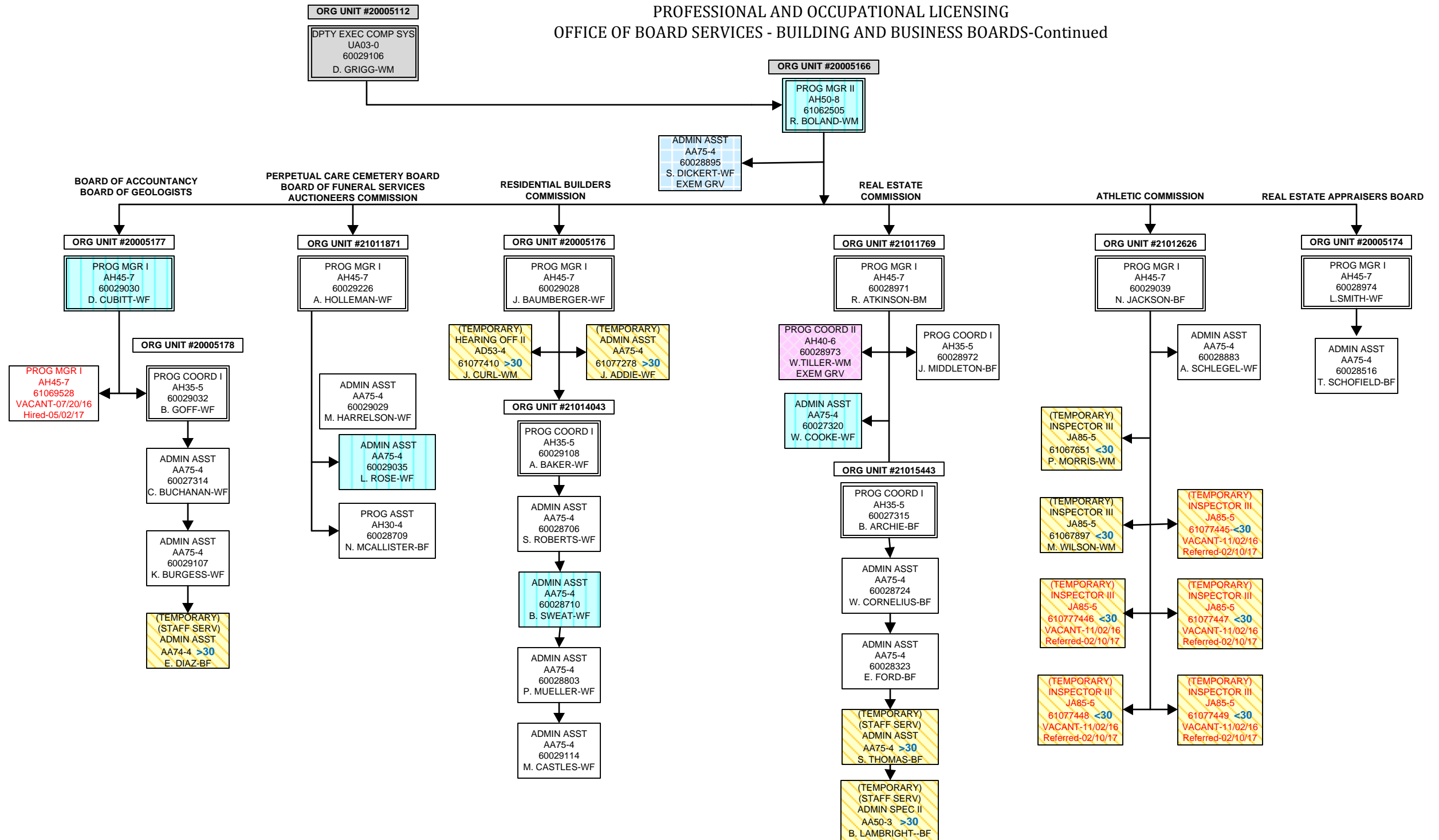
(TEMPORARY)  
PROG COORD I  
AH35-5  
61069161 <30  
C. GAINEY-WM

(TEMPORARY)  
INSTRU/TRAIN COORD II  
AG35-5  
61077065 <30  
A. SIMMONS-WM

PROFESSIONAL AND OCCUPATIONAL LICENSING  
OFFICE OF BOARD SERVICES - BUILDING AND BUSINESS BOARDS

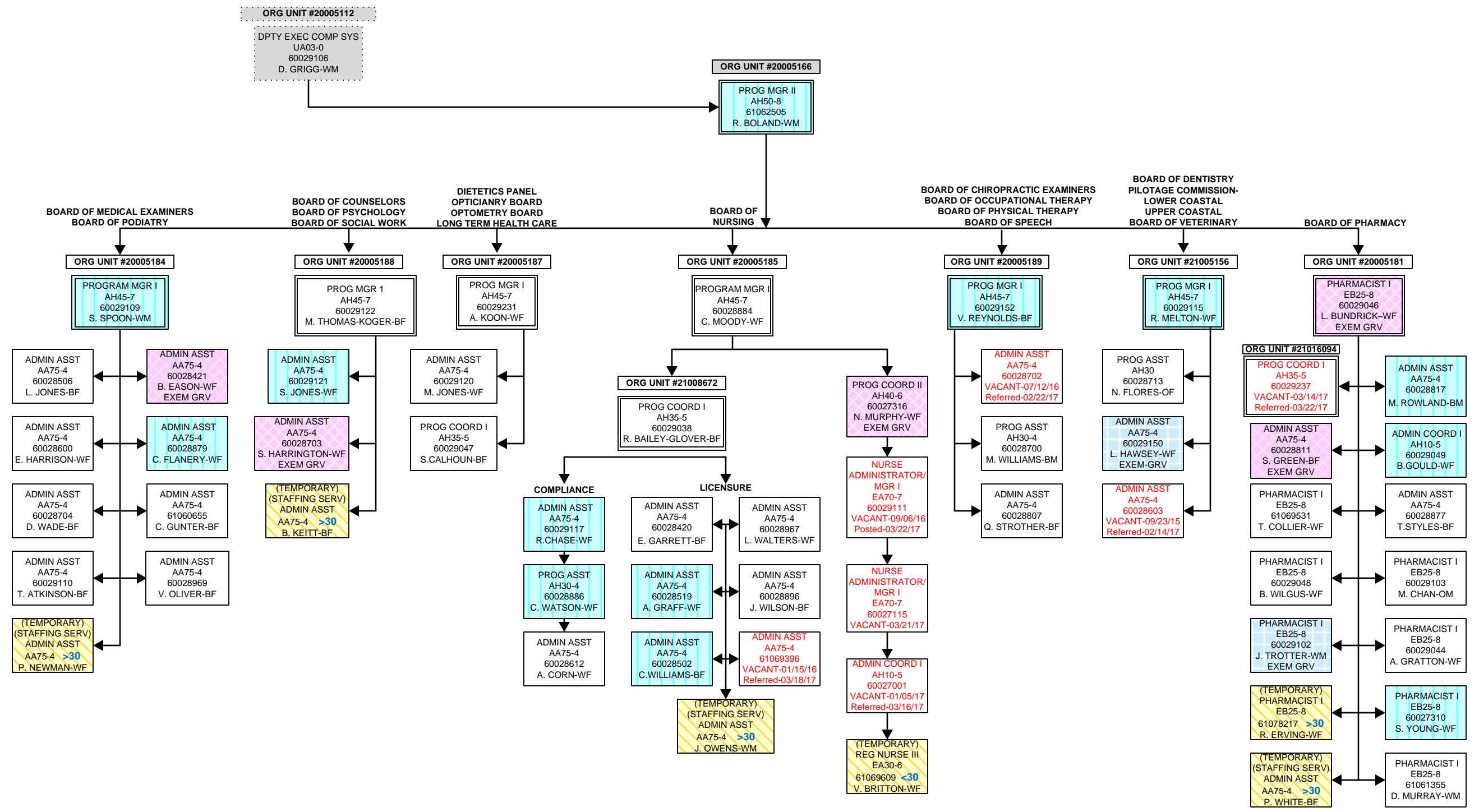


## OFFICE OF BOARD SERVICES - BUILDING AND BUSINESS BOARDS-Continued



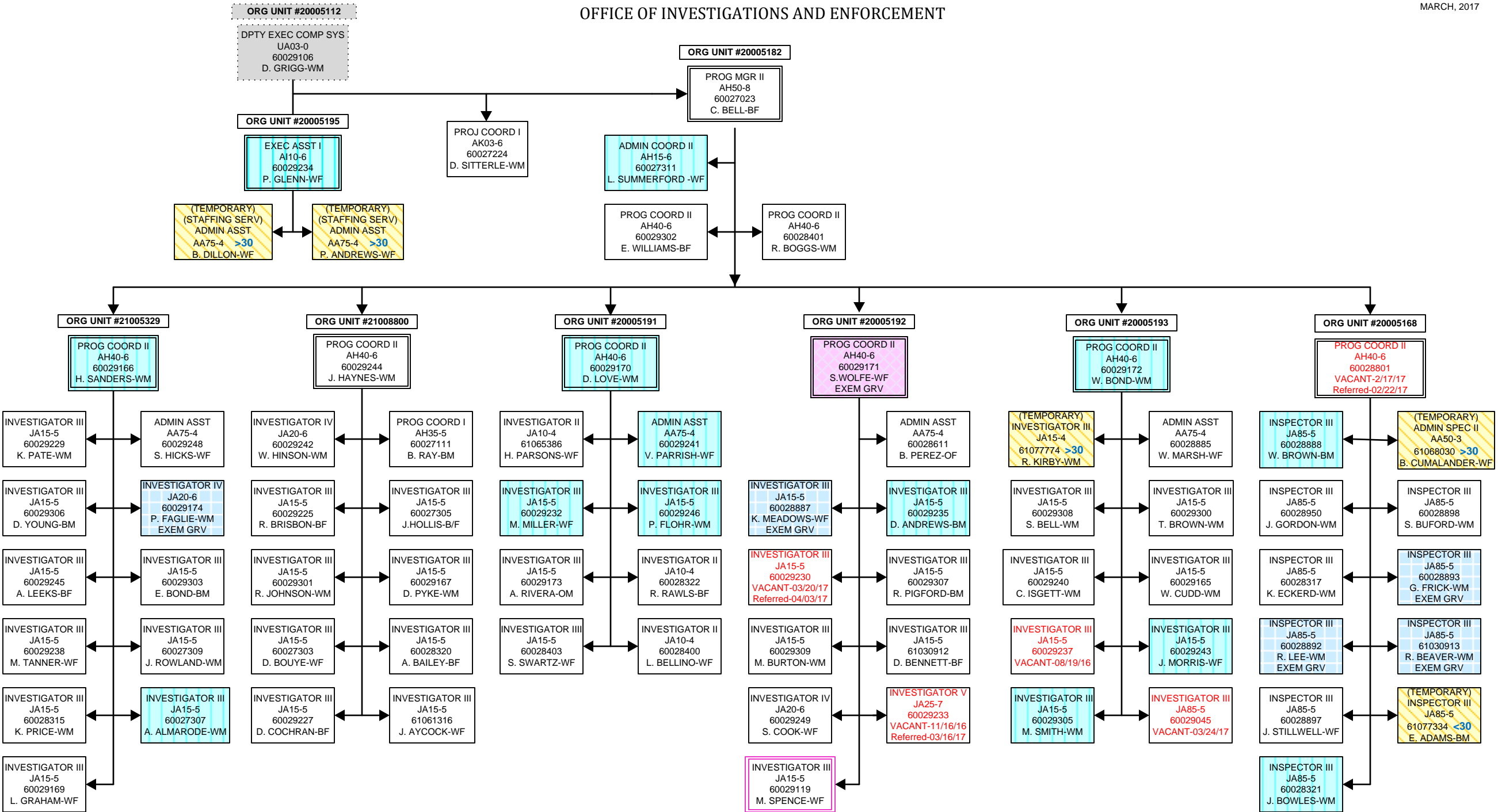


OFFICE OF BOARD SERVICES  
HEALTH AND MEDICALLY RELATED BOARDS

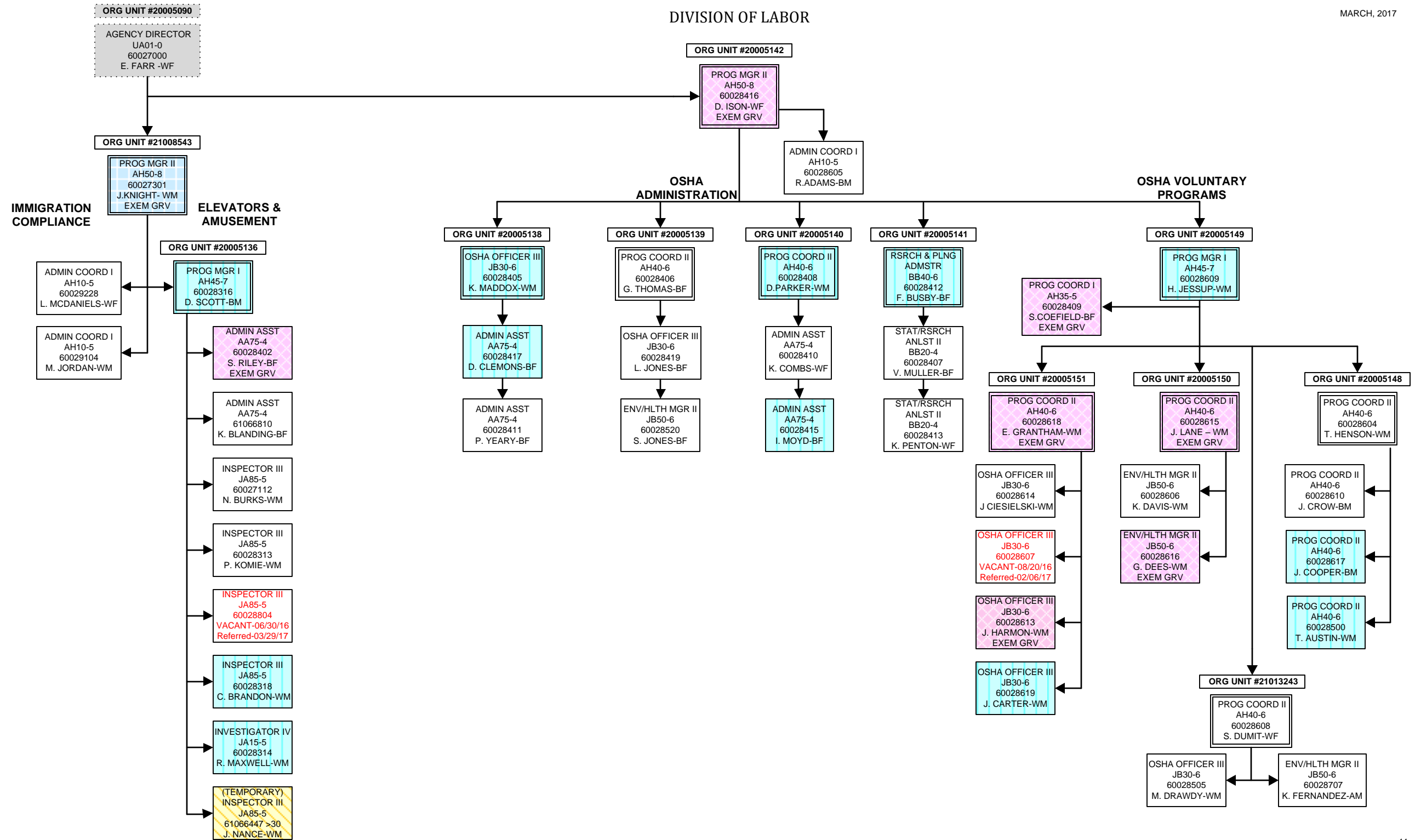


OFFICE OF INVESTIGATIONS AND ENFORCEMENT

MARCH, 2017



DIVISION OF LABOR



DIVISION OF LABOR  
OSHA-COMPLIANCE

