
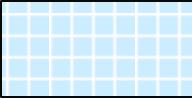
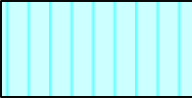



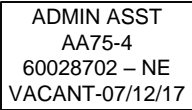
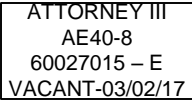


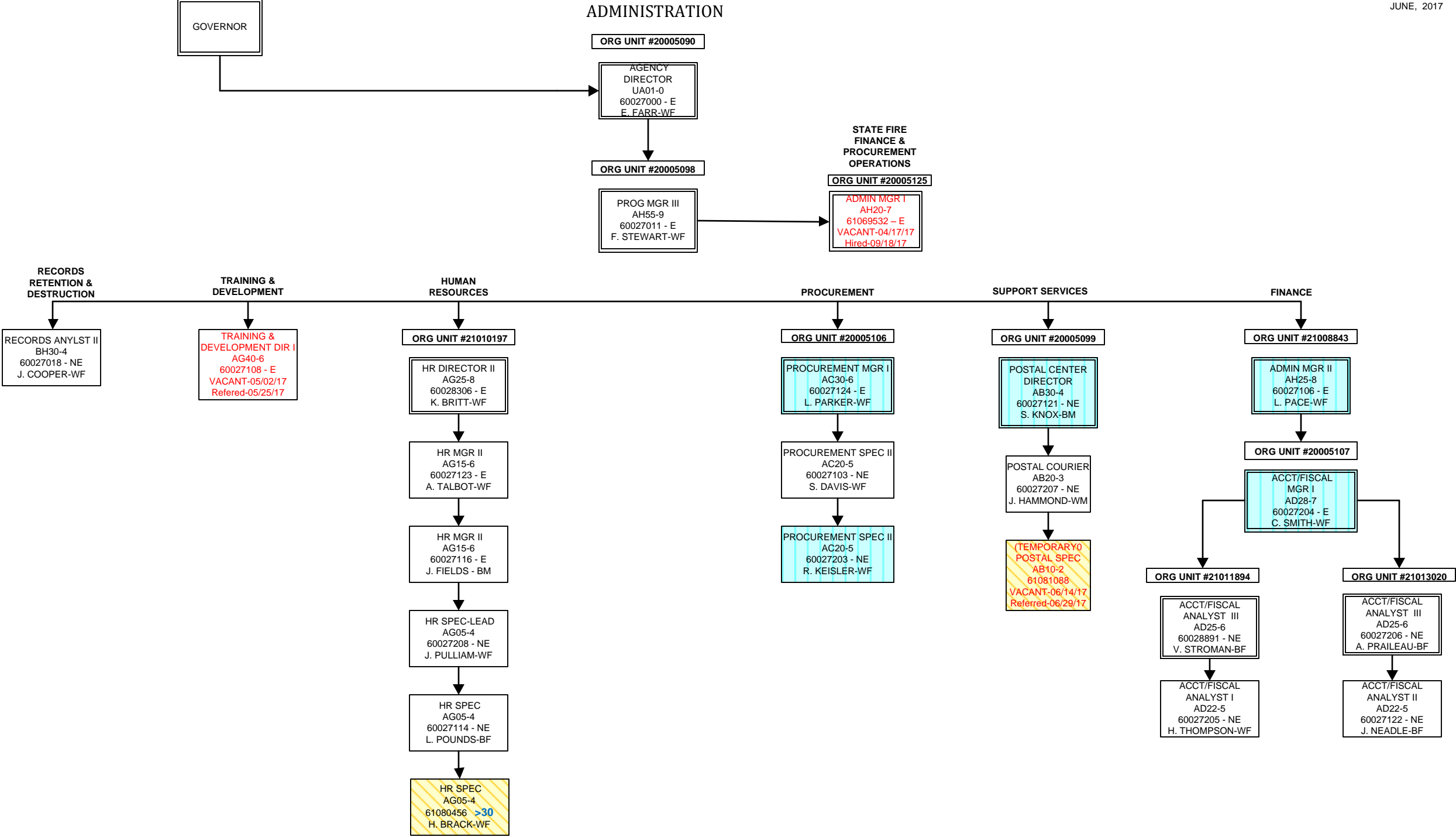
SOUTH CAROLINA  
DEPARTMENT OF LABOR, LICENSING AND REGULATION  
ORGANIZATIONAL CHART

JUNE 2017

SOUTH CAROLINA  
DEPARTMENT OF LABOR, LICENSING AND REGULATION  
ORGANIZATIONAL CHARTS

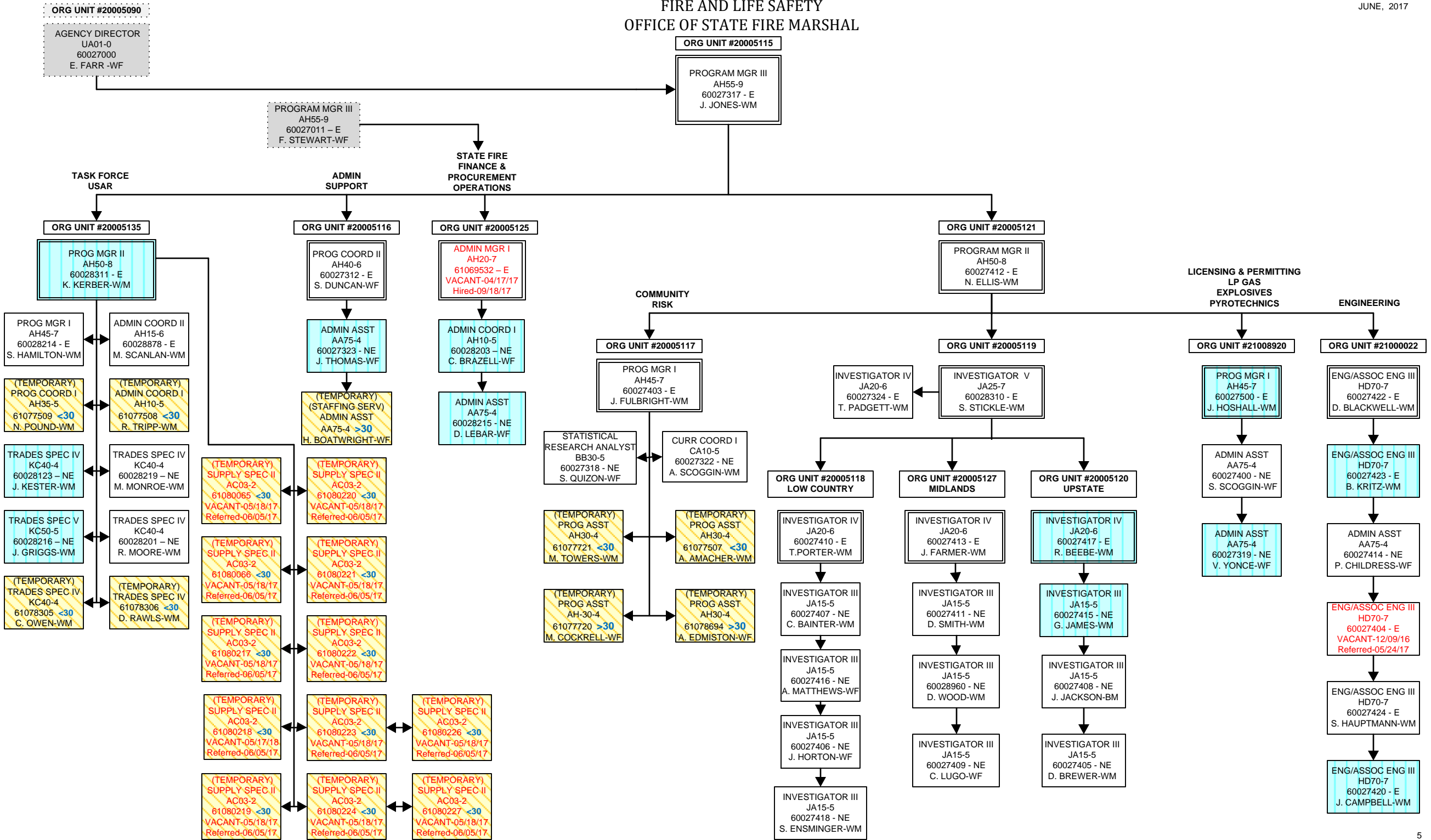
Pink Diamond		TERI Employee
Light Blue Square		Employee returned after TERI or Retirement
Turquoise Vertical Stripe		Employee eligible to retire within 5 years by service or age
White Solid Red Letters		Vacant Position-Vacancy Date
Yellow Diagonal Stripe		Temporary Employee
Dark Pink Outline		Borrowed position
NE Designation		Non-exempt position
E Designation		Exempt position





FIRE AND LIFE SAFETY  
OFFICE OF STATE FIRE MARSHAL

JUNE, 2017



FIRE AND LIFE SAFETY  
FIRE ACADEMY

JUNE, 2017

ORG UNIT #20005115

PROGRAM MGR III  
AH55-9  
60027317 - E  
J. JONES-WM

ORG UNIT #20005128

ACTING  
PROG MGR II  
AH50-8  
60028805 - E  
VACANT-06/01/17  
Referred-07/07/17

REGIONAL  
TRAINING

ORG UNIT #20005133

PROG MGR I  
AH45-7  
60028305 - E  
VACANT-06/01/17

GROUNDS &  
MAINTENANCE

CURRICULUM  
ACCREDITATIONS

EMS  
COORDINATOR

ORG UNIT #20005124

ENG/ASSOC ENG II  
HD65-6  
60028202 - E  
VACANT-12/12/16  
Referred-04/17/17

ORG UNIT #21009882

PROG MGR I  
AH45-7  
60028207 - E  
G. SPINKS-WM

ORG UNIT #20005123

CURR COORD II  
CA20-6  
60028302 - E  
B. WATTERS-WF

ONSITE  
ACADEMY TRAINING

ORG UNIT #20005126

PROG COORD II  
AH40-6  
60028204 - E  
R. BUSBY-WM

ORG UNIT #21014468

PROG MGR I  
AH45-7  
60027120 - E  
T. WOJCIK-WM

ADMIN COORD I  
AH10-5  
60028222 - NE  
K. WHITE-BF

(TEMPORARY)  
FSO II  
JC70-4  
61077843 <30  
A. ESPOSITO-WM

ORG UNIT #21012579

PROG COORD I  
AH35-5  
60028209 - NE  
R. SIMPSON-WM

MEDIA RESRC  
SPEC II  
BG60-4  
60028304 - NE  
J. BLACK-WM

(TEMPORARY)  
PRINTING MGR I  
BD30-4  
61077742 >30  
F. BRANDT-WM

(TEMPORARY)  
MEDIA SPEC II  
BG60-4  
61077743 >30  
A. HIGHLAND-BF

(TEMPORARY)  
MEDIA SPEC II  
BG60-4  
61077744 >30  
W. RENKIN-WM

(TEMPORARY)  
FSO II  
JC70-4  
61078198 <30  
M. DUNLAP-WM

ORG UNIT #20005122  
ADMINISTRATION

ADMIN COORD I  
AH10-5  
60028217 - NE  
S. BUSH-BF

ADMIN ASST  
AA75-4  
60028303 - NE  
K. RIVERA-WF

ADMIN ASST  
AA75-4  
60028213 - NE  
G. EVANS-BF

ADMIN ASST  
AA75-4  
60028211 - NE  
A. ADAMS-BF

ORG UNIT #20005131  
HOSPITALITY

FOOD SERV SPEC V  
KB25-5  
60028224 - NE  
C. JERMSTAD-WM

BLDG/GRDS SPEC III  
KA15-3  
60028210 - NE  
S. WILLIAMS-BM

(TEMPORARY)  
FOOD SVC SPEC III  
KB15-3 <30  
D. CREPAEU-WM

ORG UNIT #20005129  
REGION 1 GREENVILLE

PROG COORD I  
AH35-5  
60028221 - NE  
D. DUNCAN-WM

ADMIN ASST  
AA75-4  
60028220 - NE  
C. BAKER-WF

(TEMPORARY)  
FSO II  
JC70-4  
31 TEMPS

ORG UNIT #21011927  
REGION 2 YORK CO.

PROG COORD I  
AH35-5  
60028122 - NE  
J. MCCARLEY-WM  
EXEM GRV

(TEMPORARY)  
FSO II  
JC70-4  
18 TEMPS

ORG UNIT #20005132  
REGION 4 FLORENCE

PROG COORD I  
AH35-5  
60028300 - NE  
B. CASSIDY-WM  
EXEM GRV

ADMIN ASST  
AA75-4  
60028205 - NE  
C. CANUP-WF

(TEMPORARY)  
FSO II  
JC70-4  
22 TEMPS

ORG UNIT #20005130

PROG COORD II  
AH40-6  
60028223 - E  
T. BROWN-BM

PROG COORD I  
AH35-5  
60028121 - NE  
M. REGAL-WM

(TEMPORARY)  
FSO II  
JC70-4  
33 TEMPS

PROG COORD I  
AH35-5  
60028208 - NE  
S. DAVIS-WM

PROG COORD I  
AH35-5  
60028952 - NE  
K. WATSON-UN

ORG UNIT #21009052

PROG COORD I  
AH35-5  
60028200 - NE  
D. CROSSLAND-WM  
EXEM GRV

(TEMPORARY)  
EQUIP OPER III  
KD45-3 >30  
61077794  
T. SHARPE-WM

(TEMPORARY)  
EQUIP OPER III  
KD45-3  
61081094 >30  
VACANT-06/09/17  
Posted-06/15/17

PROG COORD I  
AH35-5  
60028124 - NE  
M. GEORGE-WM  
EXEM GRV

(TEMPORARY)  
FSO II  
JC70-4  
61081425 <30  
61081426 <30  
61081427 <30  
VACANT-06/30/17  
Referred-07/17/17

ORG UNIT #21000446

PROG COORD II  
AH40-6  
60028212 - E  
C. BENNETT-WM

(TEMPORARY)  
EDU SPEC  
CA30-4  
61077772 <30  
D. HANSON-WM

(TEMPORARY)  
EDU SPEC  
CA30-4  
61077773 <30  
N. MANSFIELD-WM

(TEMPORARY)  
EDU SPEC  
CA30-4  
61077770 <30  
Y. MUHAMMAD-BM

ORG UNIT #21001228  
REGION 5 CHARLESTON

PROG COORD I  
AH35-5  
60028206 - NE  
E. ADAMS - WM

ADMIN ASST  
AA75-4  
60028301 - NE  
A. WILLIAMSON-WF

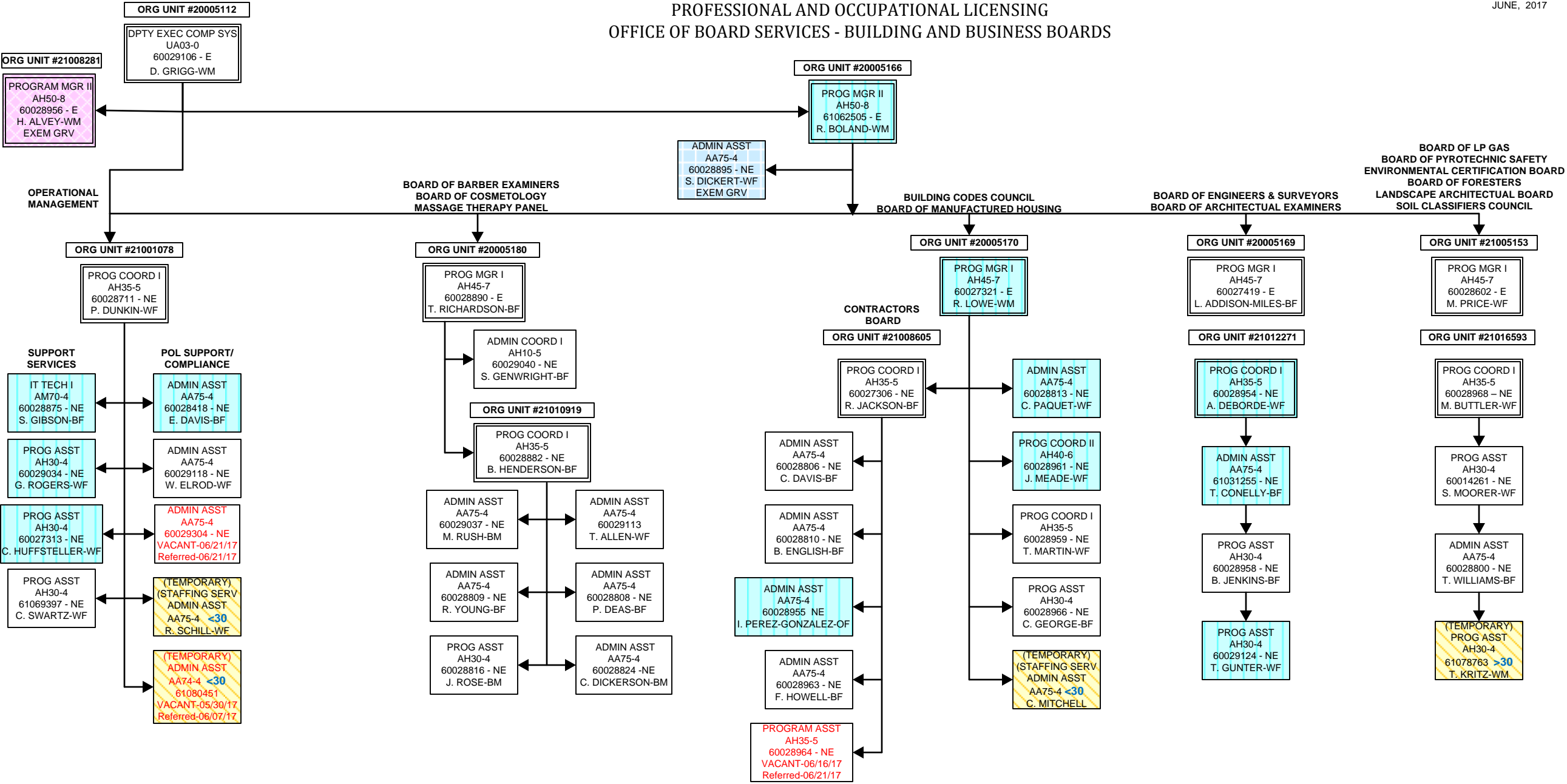
(TEMPORARY)  
FSO II  
JC70-4  
16 TEMPS

ORG UNIT #21011926  
REGION 6 AIKEN

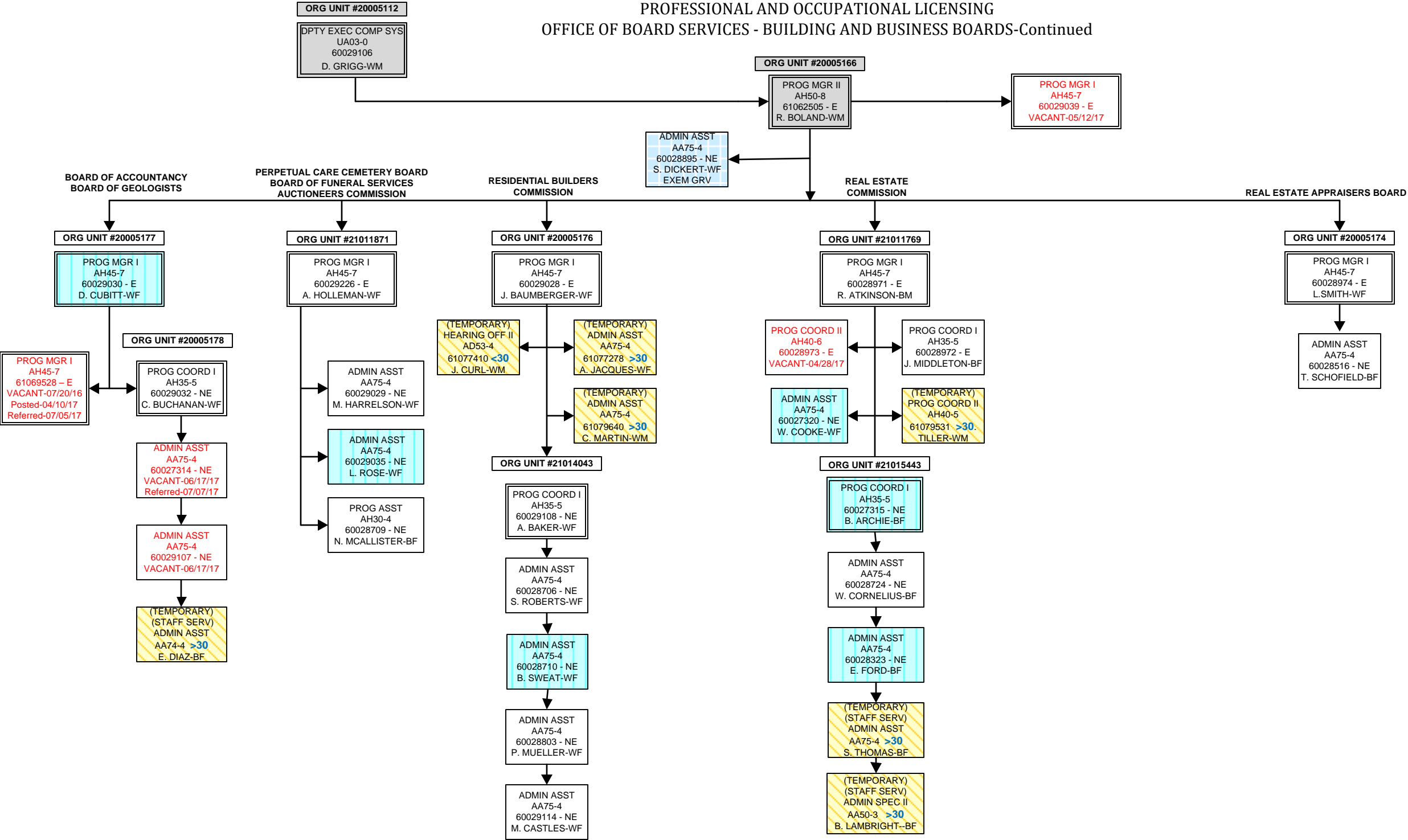
PROG COORD I  
AH35-5  
60028307 - NE  
M. TURNER-WF

(TEMPORARY)  
FSO II  
JC70-4  
8 TEMPS

PROFESSIONAL AND OCCUPATIONAL LICENSING  
OFFICE OF BOARD SERVICES - BUILDING AND BUSINESS BOARDS



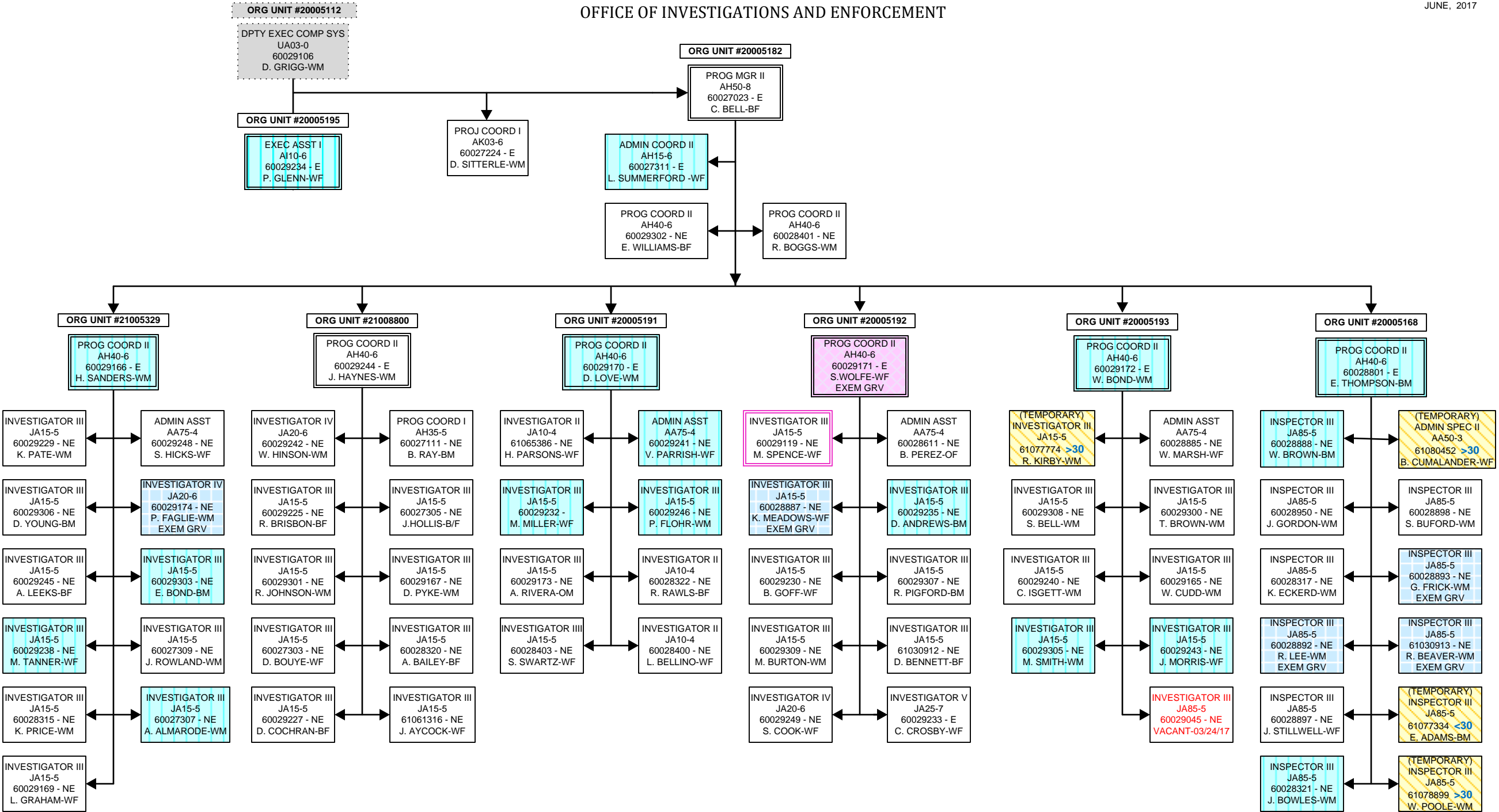
PROFESSIONAL AND OCCUPATIONAL LICENSING  
OFFICE OF BOARD SERVICES - BUILDING AND BUSINESS BOARDS-Continued







OFFICE OF INVESTIGATIONS AND ENFORCEMENT



DIVISION OF LABOR

JUNE, 2017

