
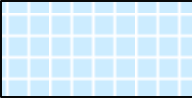
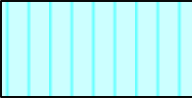






SOUTH CAROLINA
DEPARTMENT OF LABOR, LICENSING AND REGULATION
ORGANIZATIONAL CHART

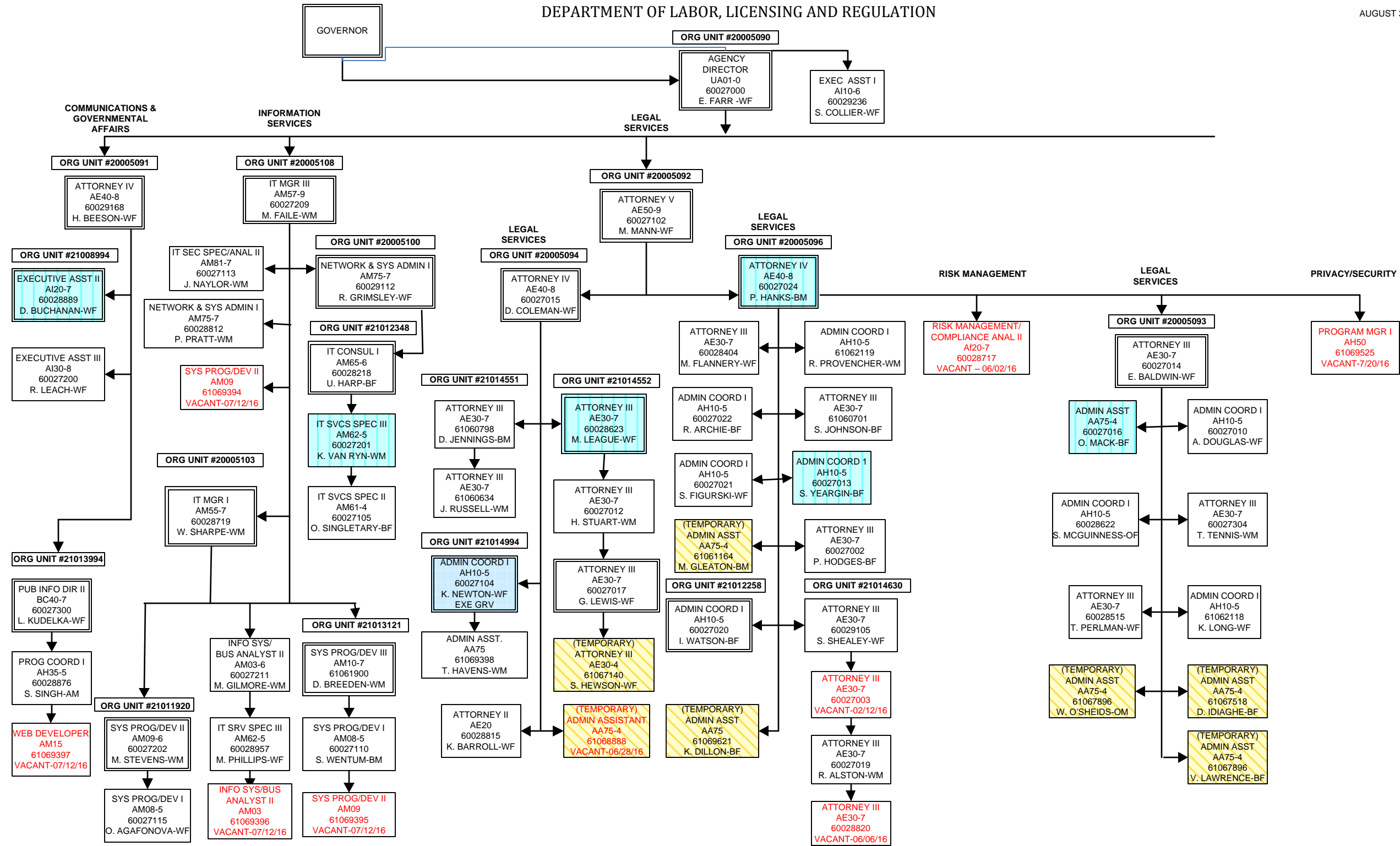
AUGUST 31, 2016

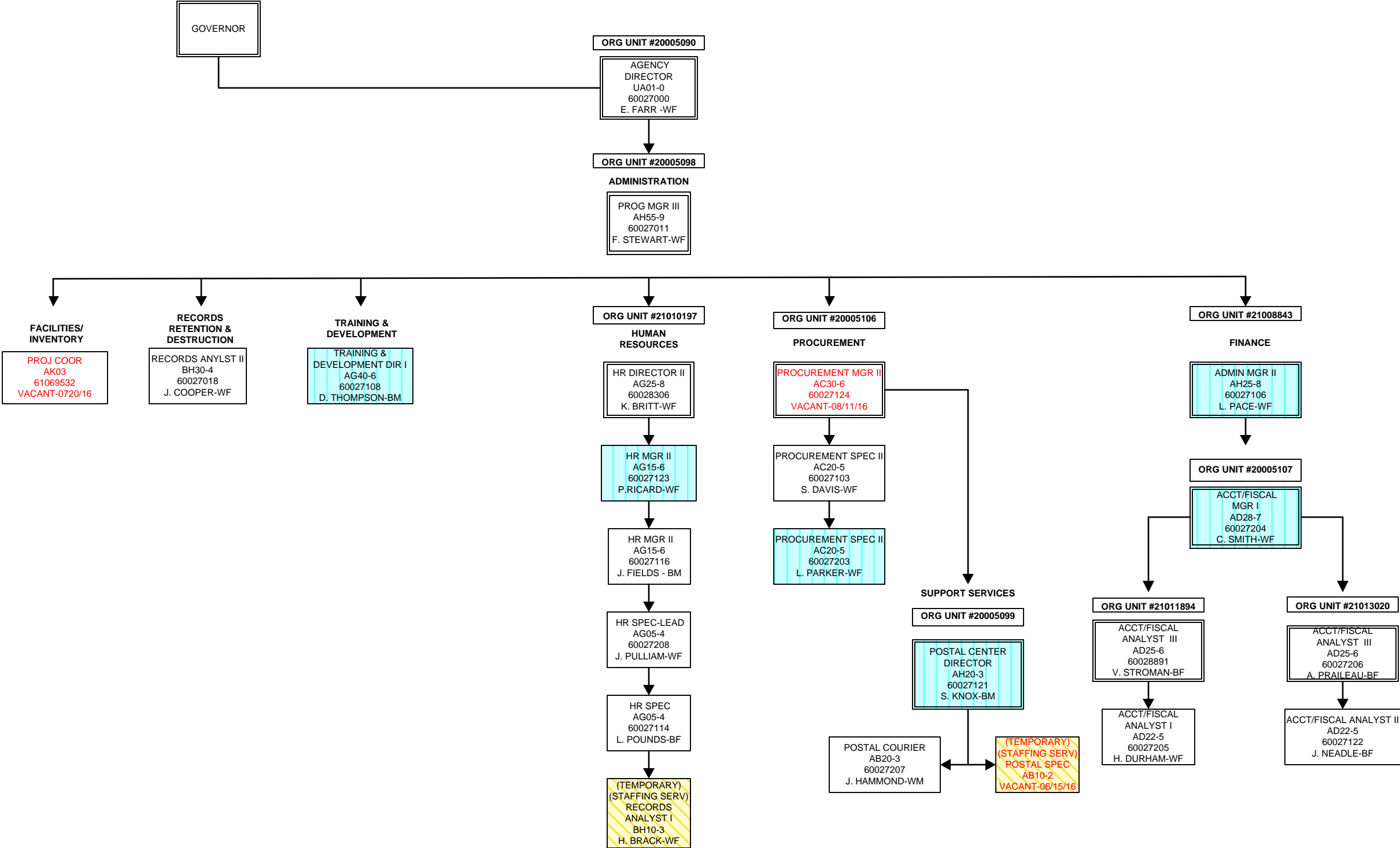
SOUTH CAROLINA
DEPARTMENT OF LABOR, LICENSING AND REGULATION
ORGANIZATIONAL CHARTS

| | | |
|---------------------------|--------------------------------------------------------------------------------------|--------------------------------------------------------------------|
| Pink Diamond |  | TERI Employee |
| Light Blue Square |  | Employee returned after TERI or Retirement |
| Turquoise Vertical Stripe |  | Employee eligible to retire within 5 years by service or age |
| White Solid Red Letters |  | Vacant Position-Vacancy Date |
| Yellow Diagonal Stripe |  | Temporary Employee |
| Grayed out |  | Previously counted position |
| Dark Pink Outline |  | Borrowed position |

DEPARTMENT OF LABOR, LICENSING AND REGULATION

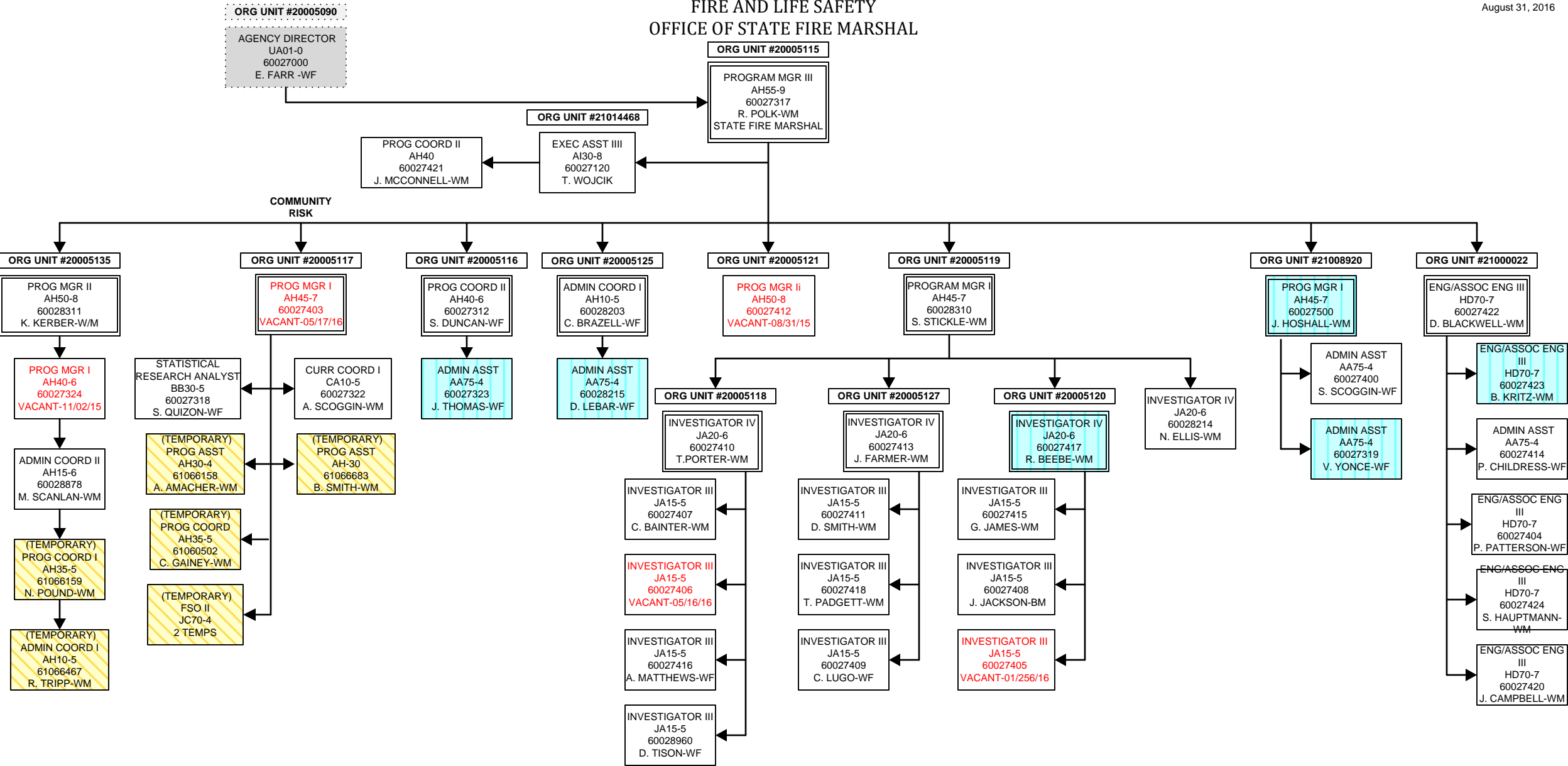
AUGUST 31, 2016





FIRE AND LIFE SAFETY
OFFICE OF STATE FIRE MARSHAL

August 31, 2016



FIRE AND LIFE SAFETY
FIRE ACADEMY

ORG UNIT #20005115
PROGRAM MGR III
AH55-9
60027317
R. POLK-WM
STATE FIRE MARSHAL

ORG UNIT #20005128

PROG MGR II
AH50-8
60028805
VACANT-7/2/16

ORG UNIT #20005134

PROG COORD I
AH10-5
60028211
VACANT-03/24/16

ORG UNIT #20005124

ENG/ASSOC ENG II
HD65-6
60028202
D. RECKELHOFF-WM

ORG UNIT #21009882

TRAIN & DEV DIR I
AG40-6
60028207
VACANT-03/25/16

ORG UNIT #20005133

PROG MGR I
AH45-7
60028305
P. RUSSELL-WM

ORG UNIT #20005126

PROG COORD II
AH40-6
60028204
R. BUSBY-WM

TRADES SPEC IV
KC40-4
60028123
J. KESTER-WM

TRADES SPEC IV
KC40-4
60028219
M. MONROE-WM

TRADES SPEC V
KC50-5
60028216
J. GRIGGS-WM

TRADES SPEC IV
KC40-4
60028201
R. MOORE-WM

(TEMPORARY)
TRADES SPEC IV
KC40-4
61066615
C. OWEN-WM

(TEMPORARY)
TRADES SPEC IV
KC40-4
61066684
D. RAWLS-WM

ORG UNIT #20005123

CURR COORD II
CA20-6
60028302
B. WATTERS-WF

ADMIN COORD I
AH10-5
60028222
K. WHITE-BF

(TEMPORARY)
FSO II
JC70-4
3 TEMPS

ORG UNIT #21000446

PROG COORD II
AH40-6
60028212
C. BENNETT-WM

(TEMPORARY)
EDU SPEC
CA30-4
61066093
D. HANSON-WM

(TEMPORARY)
FSO II
JC70-4
1 TEMP

(TEMPORARY)
EDU SPEC
CA30-4
61069607
Y. MUHAMMAD-B/M

(TEMPORARY)
EDU SPEC
CA30-4
61049997
N. MANSFIELD-WM

ORG UNIT #21012579

PROG COORD I
AH35-5
60028209
R. SIMPSON

MEDIA RESRC
SPEC II
BG60-4
60028304
J. BLACK-WM

(TEMPORARY)
MEDIA SPEC II
BG60-4
61061899
W. RENKIN-WM

(TEMPORARY)
MEDIA SPEC II
BG60-4
61066275
A. HIGHLAND-BF

(TEMPORARY)
PRINTING MGR I
BD30-4
61065900
F. BRANDT-WM

REGION 0
ORG UNIT #20005122

ADMIN COORD I
AH10-5
60028217
S. BUSH-BF

ADMIN ASST
AA75-4
60028303
K. RIVERA-WF

ADMIN ASST
AA75-4
60028213
G. EVANS-BF

REGION)
ORG UNIT #20005131

FOOD SERV SPEC V
KB25-5
60028224
C. JERMSTAD-WM

BLDG/GRDS SPEC III
KA15-3
60028210
S. WILLIAMS-BM

REGION 1
ORG UNIT #20005129

PROG COORD I
AH35-5
60028221
D. DUNCAN-WM

ADMIN ASST
AA75-4
60028220
C. BAKER-WF

(TEMPORARY)
FSO II
JC70-4
33 TEMPS

REGION 5
ORG UNIT #21001228

PROG COORD II
AH40-6
60028206
B. TURNER-WM

ADMIN ASST
AA75-4
60028301
A. WILLIAMSON-WF

(TEMPORARY)
FSO II
JC70-4
20 TEMPS

REGION 6
ORG UNIT #21011926

PROG COORD I
AH35-5
60028307
M. TURNER-WF

(TEMPORARY)
FSO II
JC70-4
43 TEMPS

REGION 2
ORG UNIT #21011927

PROG COORD I
AH35-5
60028122
J. MCCARLEY-WM
EXEM GRV

(TEMPORARY)
FSO II
JC70-4
1 TEMP
VACANT-07/01/16

REGION 4
ORG UNIT #20005132

PROG COORD I
AH35-5
60028300
B. CASSIDY-WM
EXEM GRV

ADMIN ASST
AA75-4
60028205
C. CANUP-WF

(TEMPORARY)
FSO II
JC70-4
27 TEMPS

ORG UNIT #20005130

PROG COORD II
AH40-6
60028223
T. BROWN-BM

PROG COORD I
AH35-5
60028200
D. CROSSLAND-WM
EXEM GRV

PROG COORD I
AH35-5
60028121
K. ISEMAN-WF

(TEMPORARY)
FSO II
JC70-4
18 TEMPS

PROG COORD I
AH35-5
60028208
S. DAVIS-WM

PROG COORD I
AH35-5
60028952
K. WATSON-UN

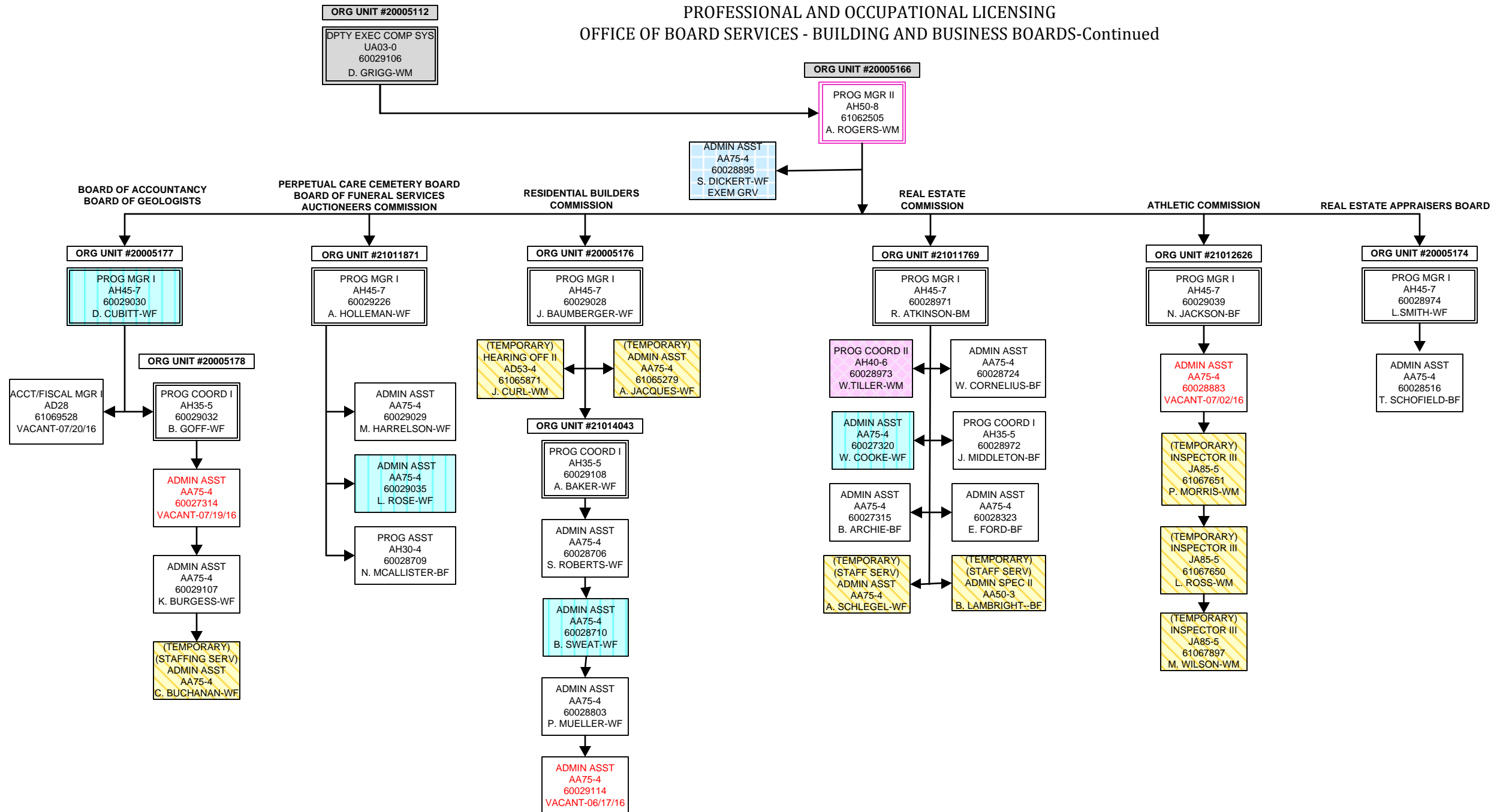
(TEMPORARY)
FSO II
JC70-4
42 TEMPS

ORG UNIT #21009052

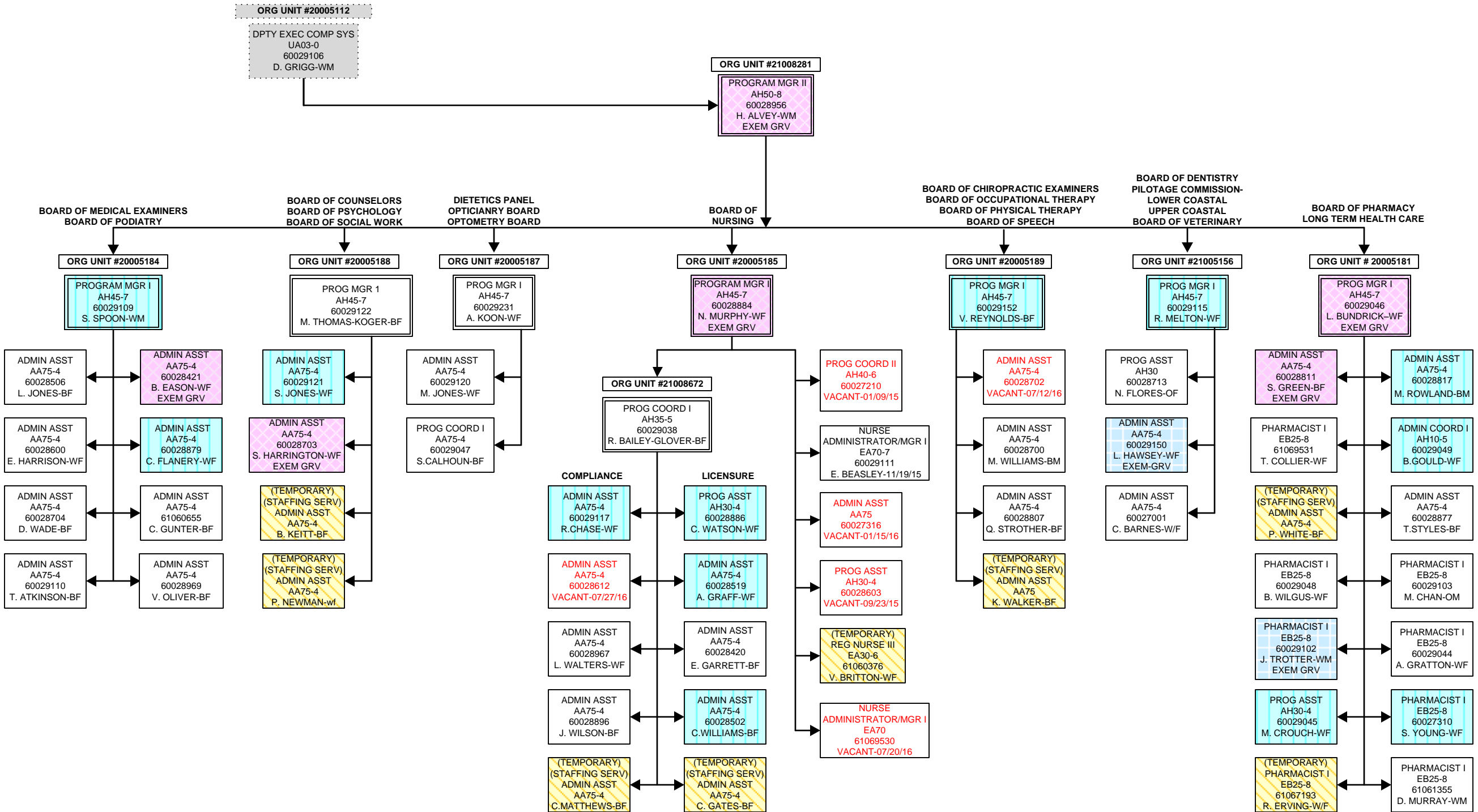
PROG COORD I
AH35-5
60028124
M. GEORGE-WM
EXEM GRV



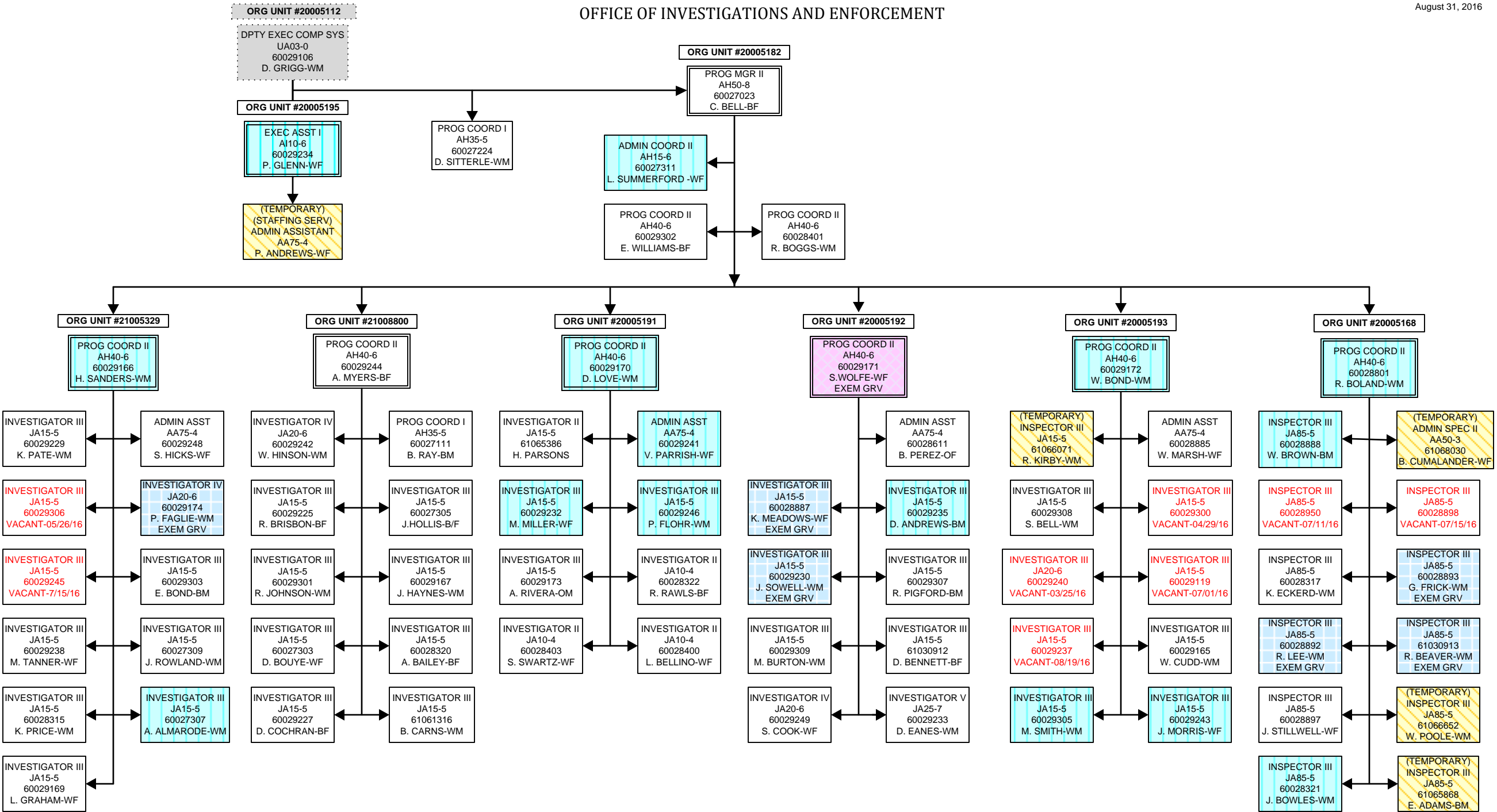
OFFICE OF BOARD SERVICES - BUILDING AND BUSINESS BOARDS-Continued



OFFICE OF BOARD SERVICES
HEALTH AND MEDICALLY RELATED BOARDS

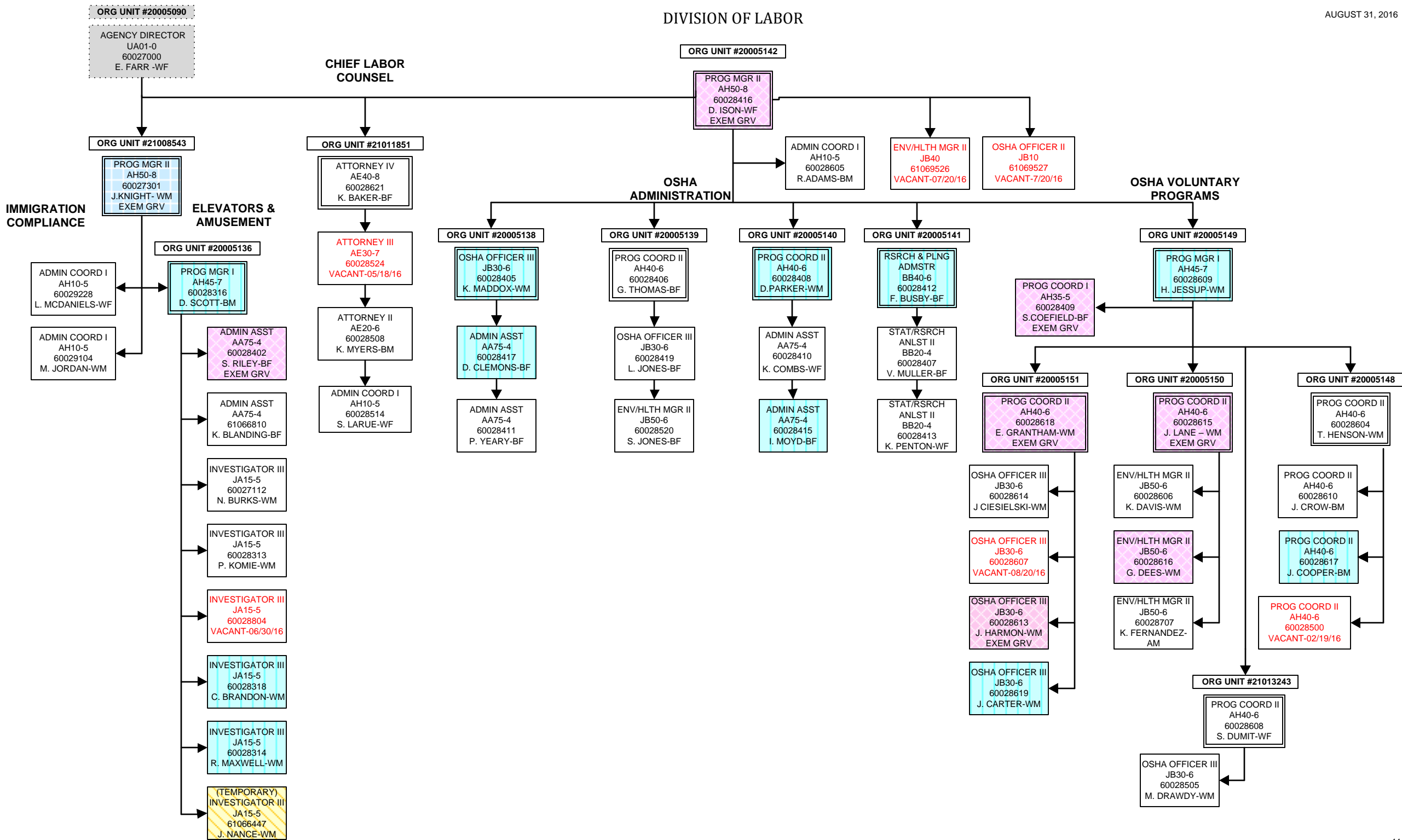


OFFICE OF INVESTIGATIONS AND ENFORCEMENT



DIVISION OF LABOR

AUGUST 31, 2016



DIVISION OF LABOR
OSHA-COMPLIANCE

