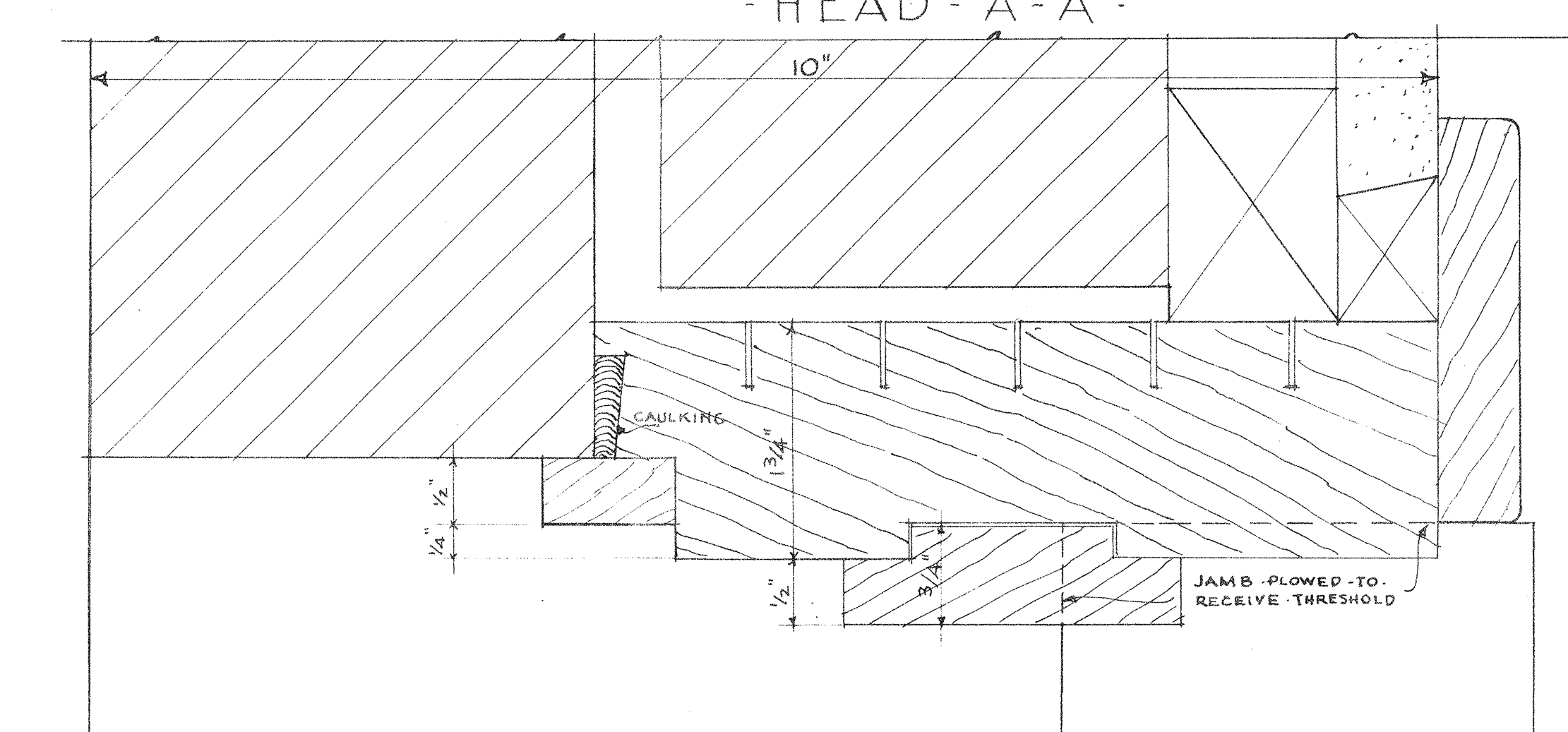
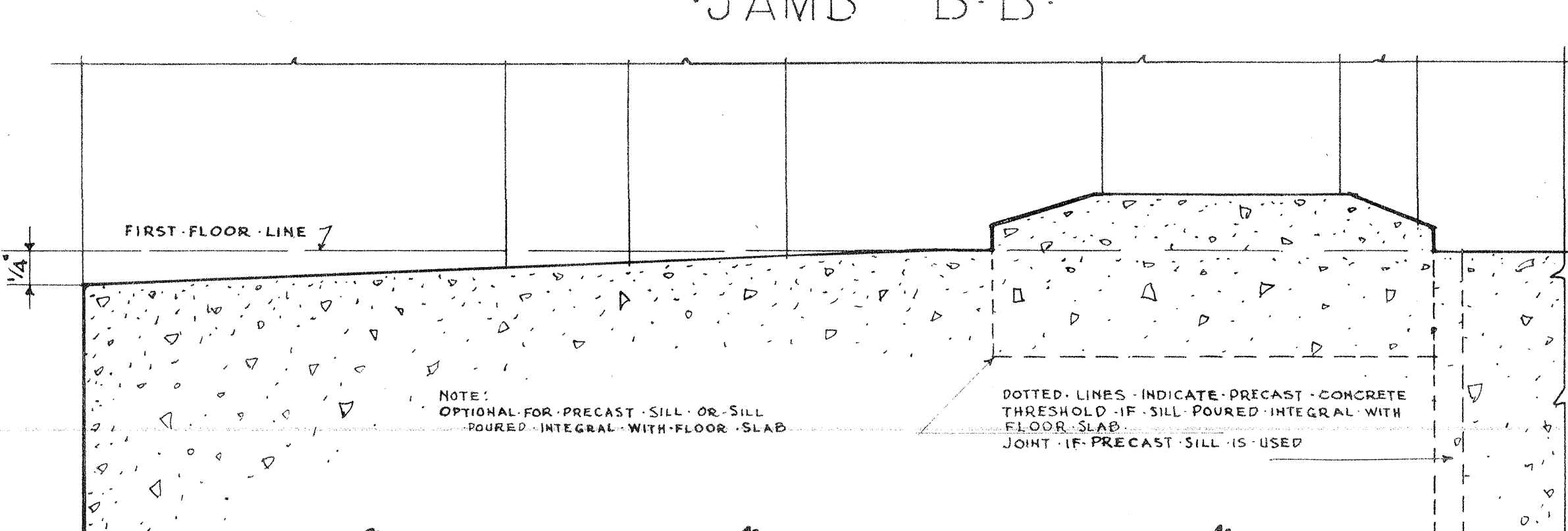


HEAD - A-A

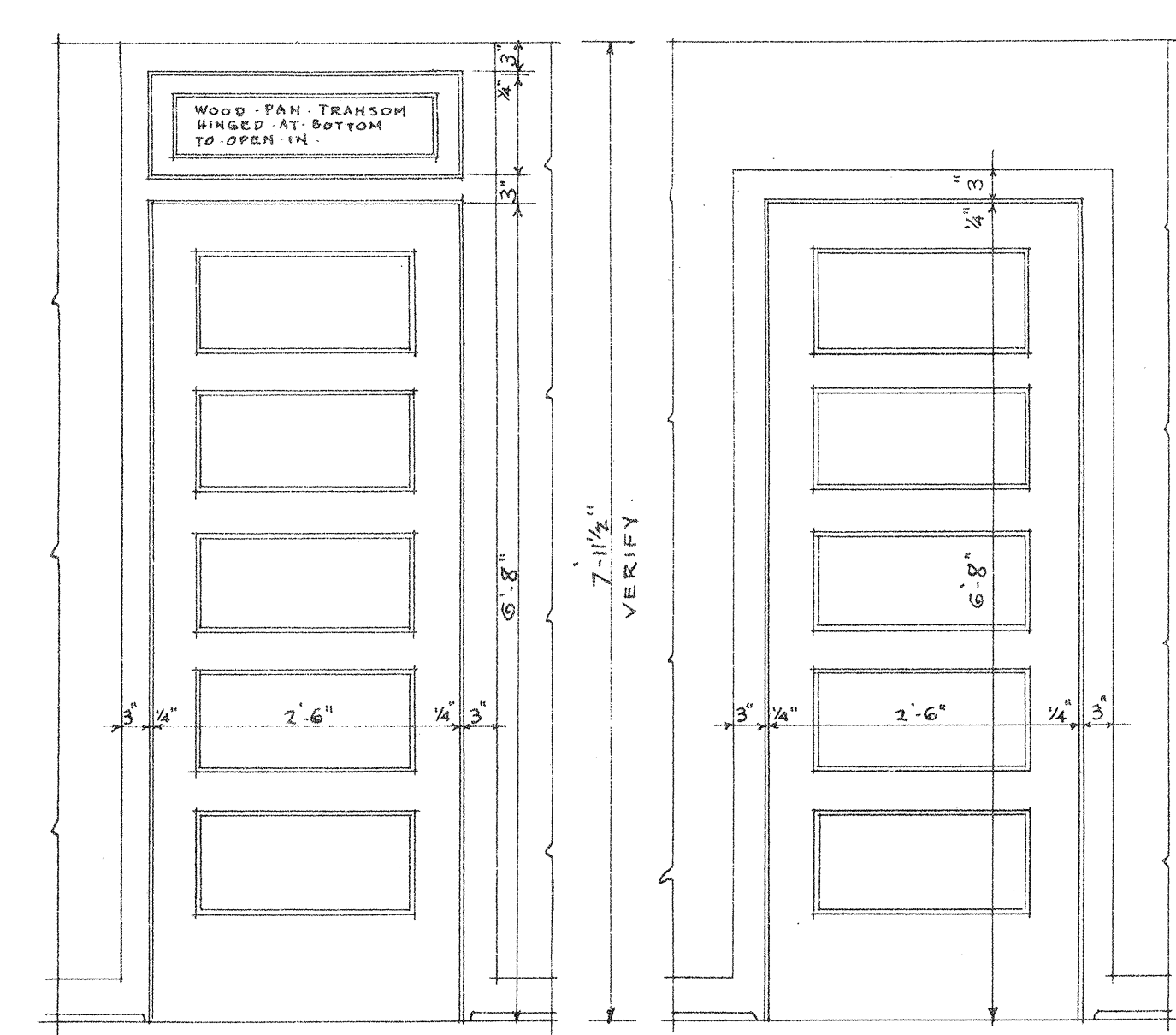


JAMB - B-B

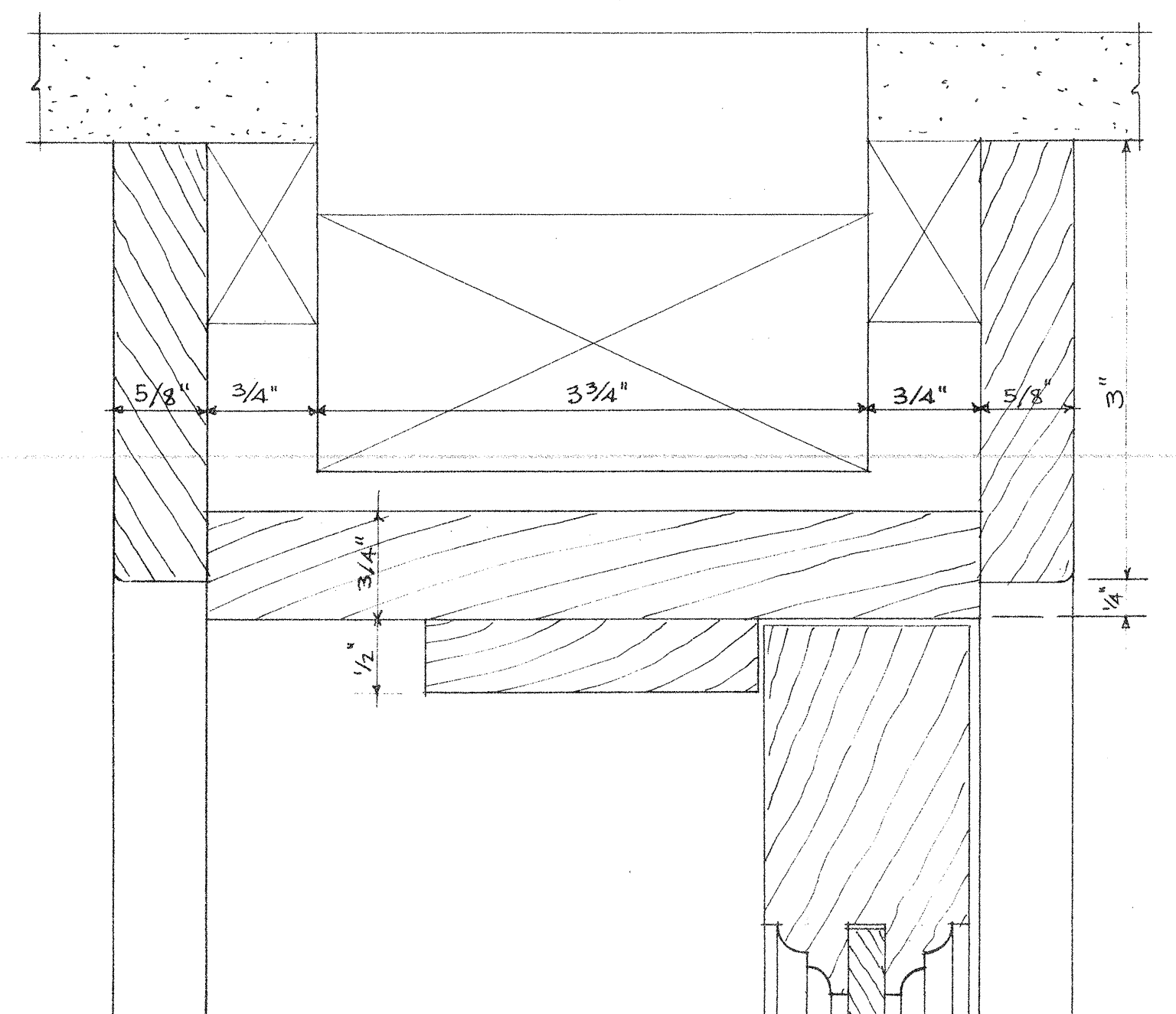


SILL - C-C

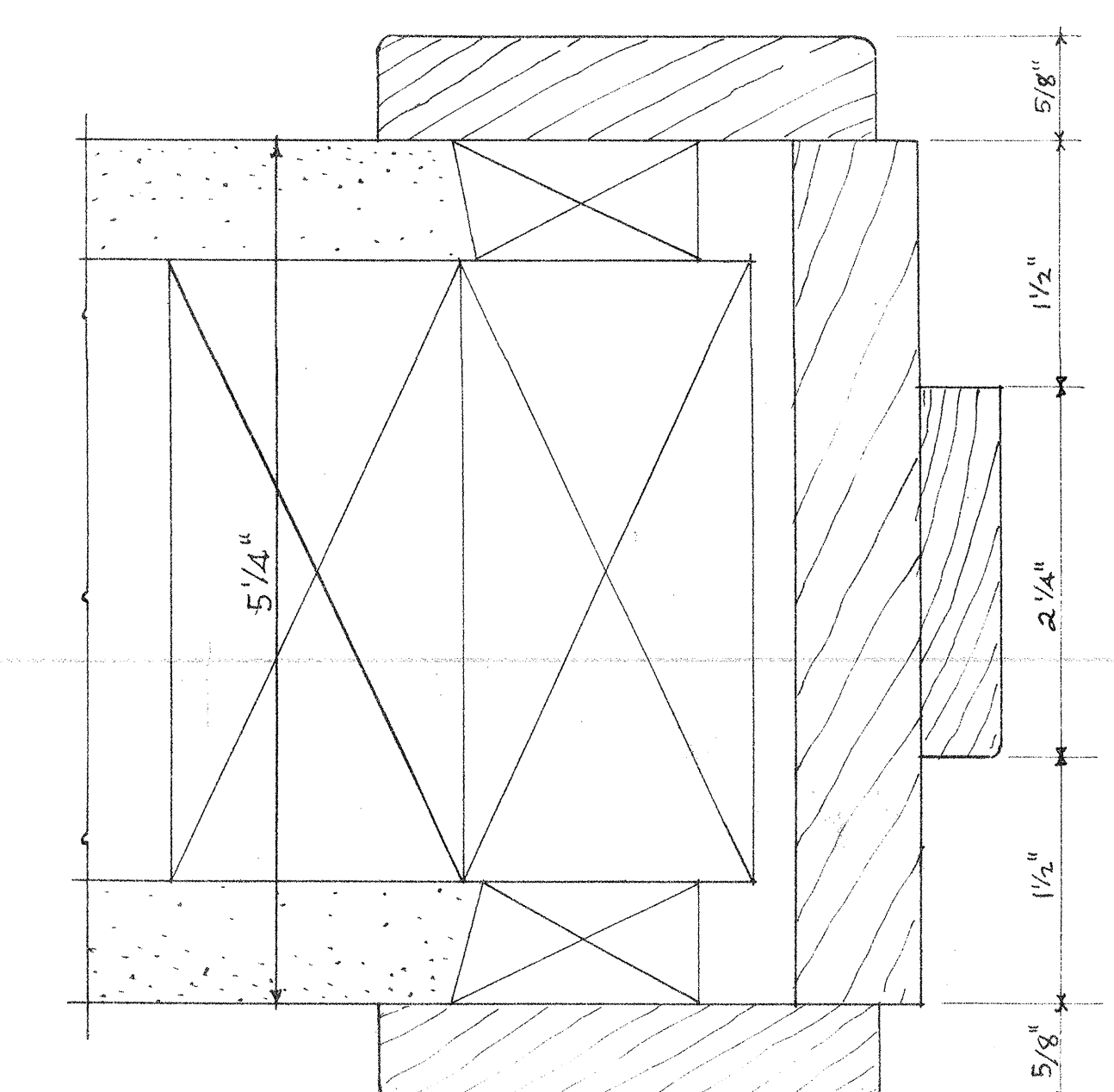
FULL SIZE DETAILS OF EXTERIOR DOOR FRAMES



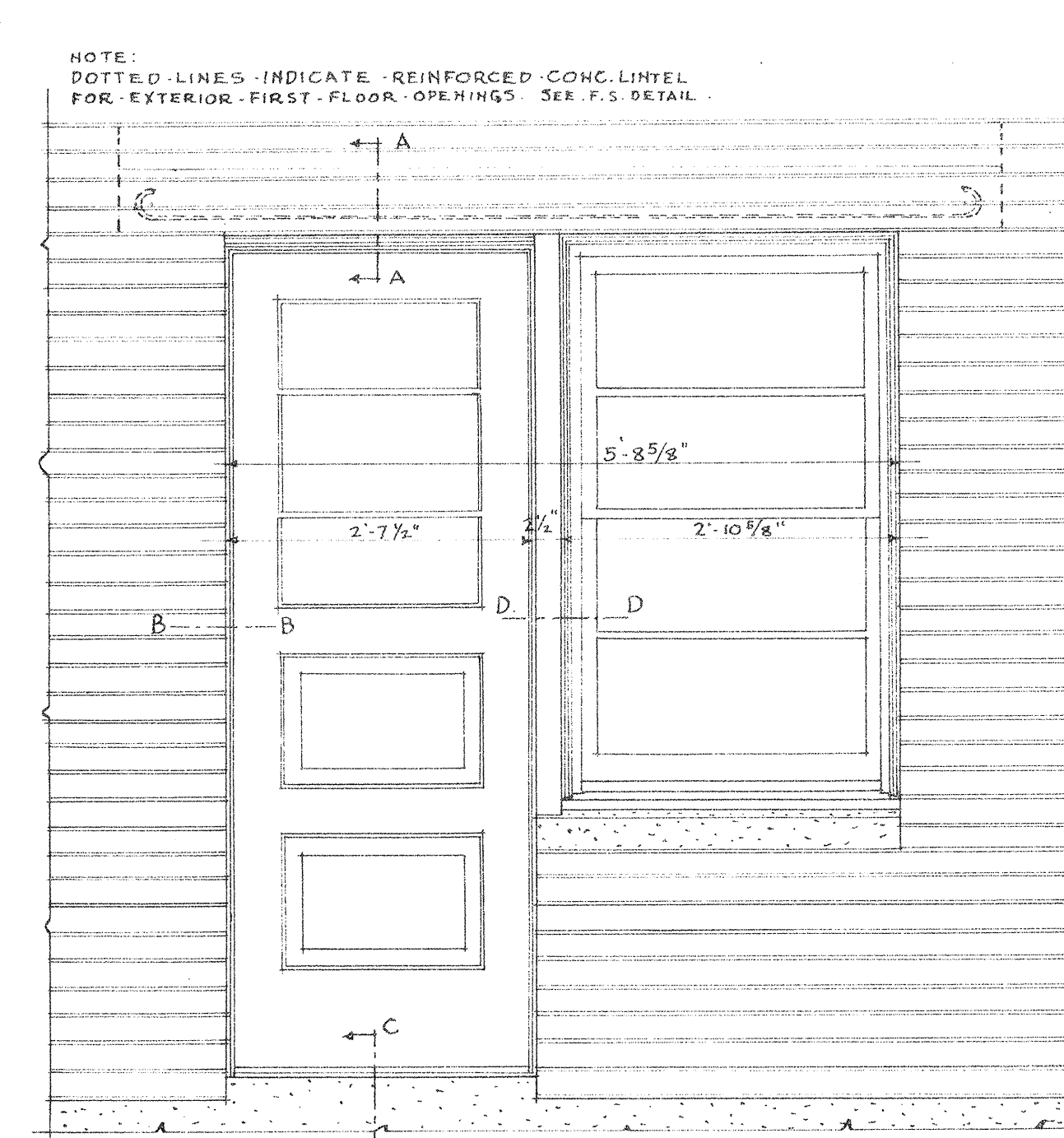
ELEVATION - TYPICAL INTERIOR DOORS  
SCALE: 3/4" = 1'-0"



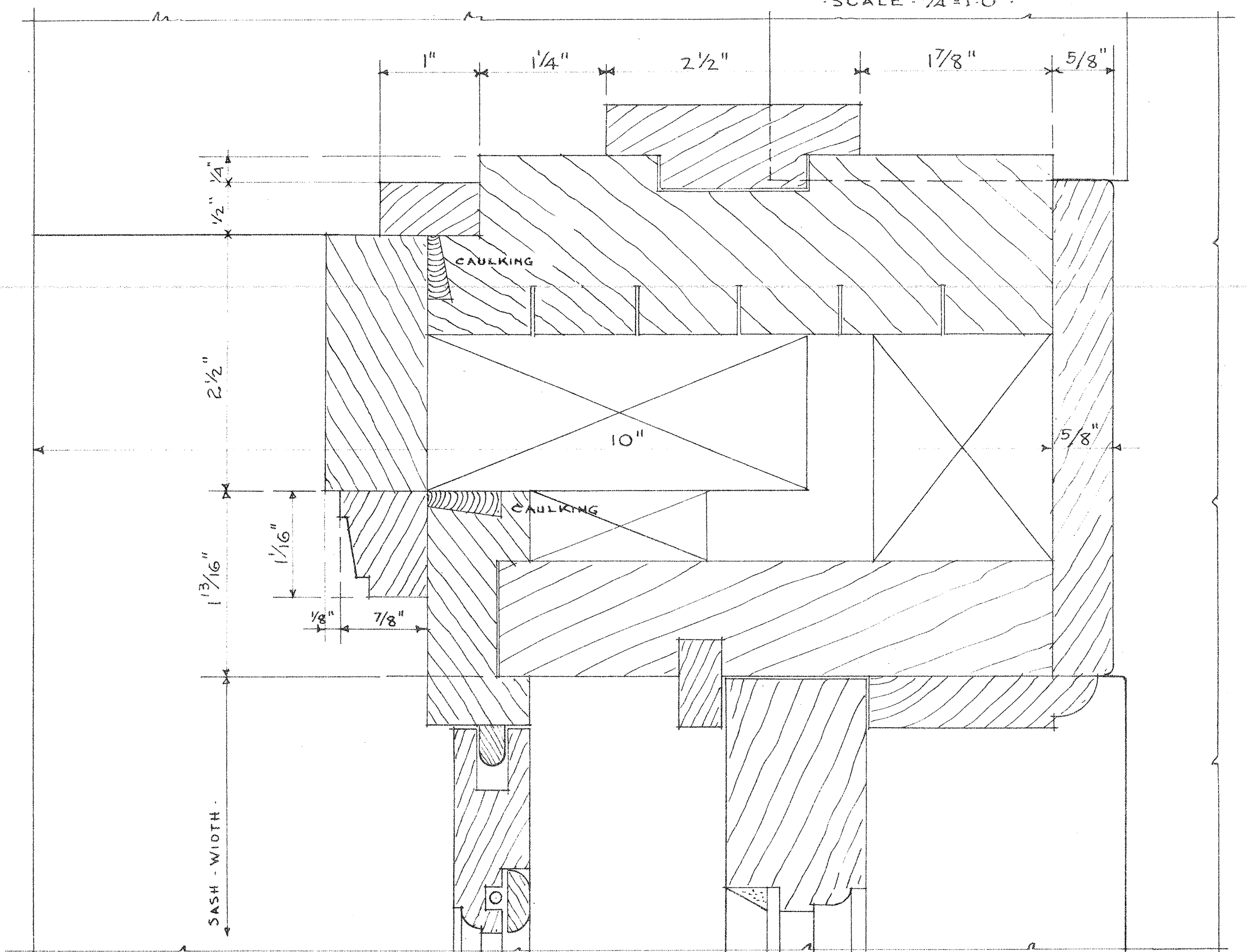
F.S. SECTION AT HEAD & TRANSOM BAR



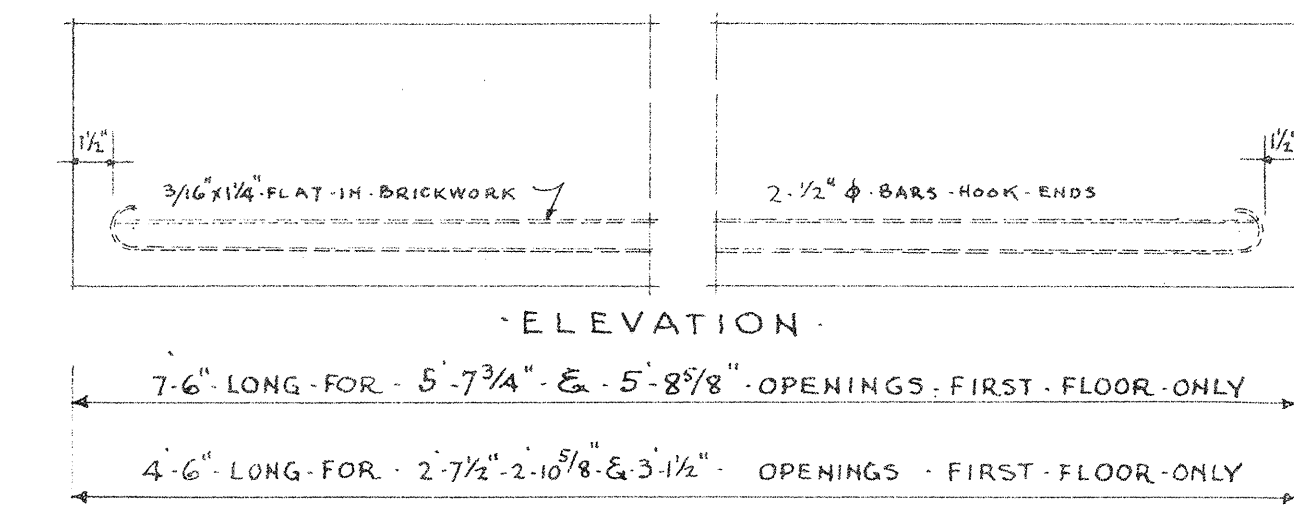
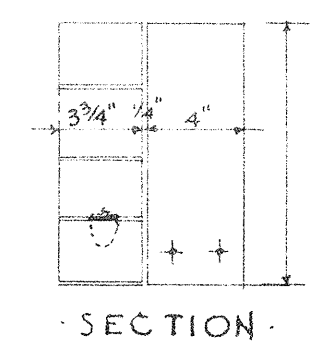
F.S. JAMB



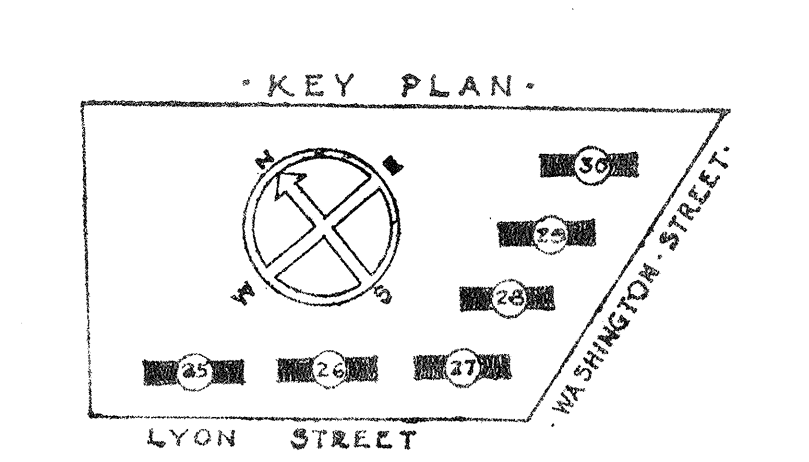
ELEVATION OF DOOR-WINDOW COMBINATION  
SCALE: 3/4" = 1'-0"



F.S. COMBINATION DOOR & WINDOW JAMB - D-D



SCHEDULE FOR LINTELS OVER WINDOWS & DOORS - 1ST FLOOR  
(SEE FULL SIZE DETAIL ABOVE)



SHEET TITLE  
DETAILS OF EXTERIOR & INTERIOR DOORS

GONZALES GARDENS EXTENSION  
LOW RENT HOUSING PROJECT, COLUMBIA, SC-21A  
DEVELOPED BY  
THE HOUSING AUTHORITY OF THE CITY OF COLUMBIA, S.C.  
UNDER LOW CONTRACT WITH  
FEDERAL PUBLIC HOUSING AUTHORITY

CHECKED: \_\_\_\_\_ APPROVED BY: \_\_\_\_\_ DATE: \_\_\_\_\_

DATE: \_\_\_\_\_

DESIGNED BY: \_\_\_\_\_

APPROVED BY: \_\_\_\_\_ DATE: \_\_\_\_\_

THE HOUSING AUTHORITY OF THE CITY OF COLUMBIA, S.C.  
JAMES B. HODGKINS  
CHIEF ENGINEER  
JAMES B. HODGKINS  
ARCHITECT  
DATE 3.27.62

SCALE: 3/4" = 1'-0" AND FULL SIZE

SHEET NO. 11