
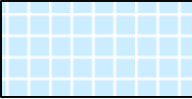
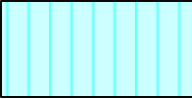



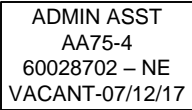
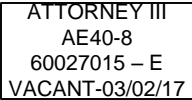


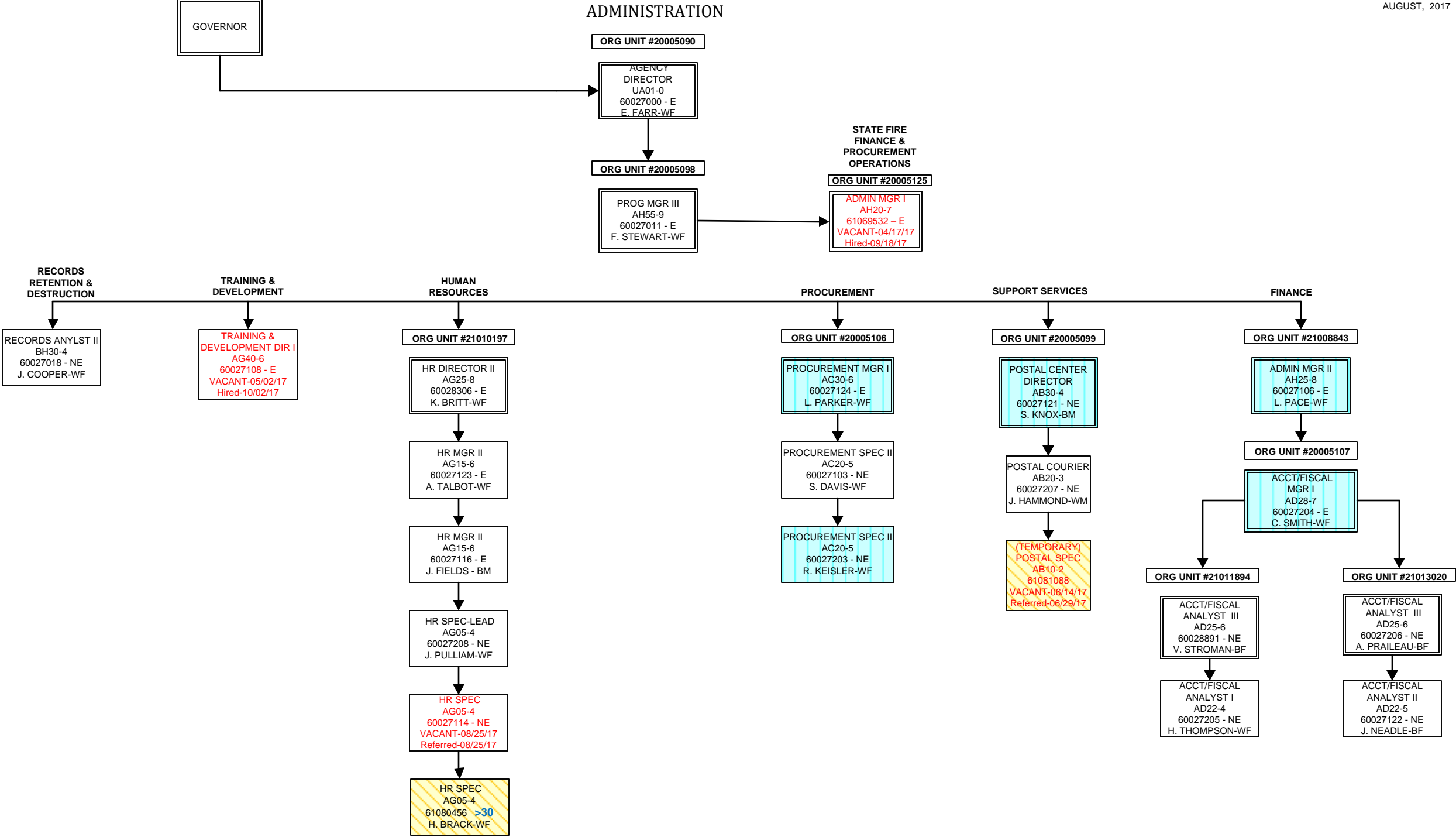
SOUTH CAROLINA  
DEPARTMENT OF LABOR, LICENSING AND REGULATION  
ORGANIZATIONAL CHART

AUGUST 2017

**SOUTH CAROLINA  
DEPARTMENT OF LABOR, LICENSING AND REGULATION  
ORGANIZATIONAL CHARTS**

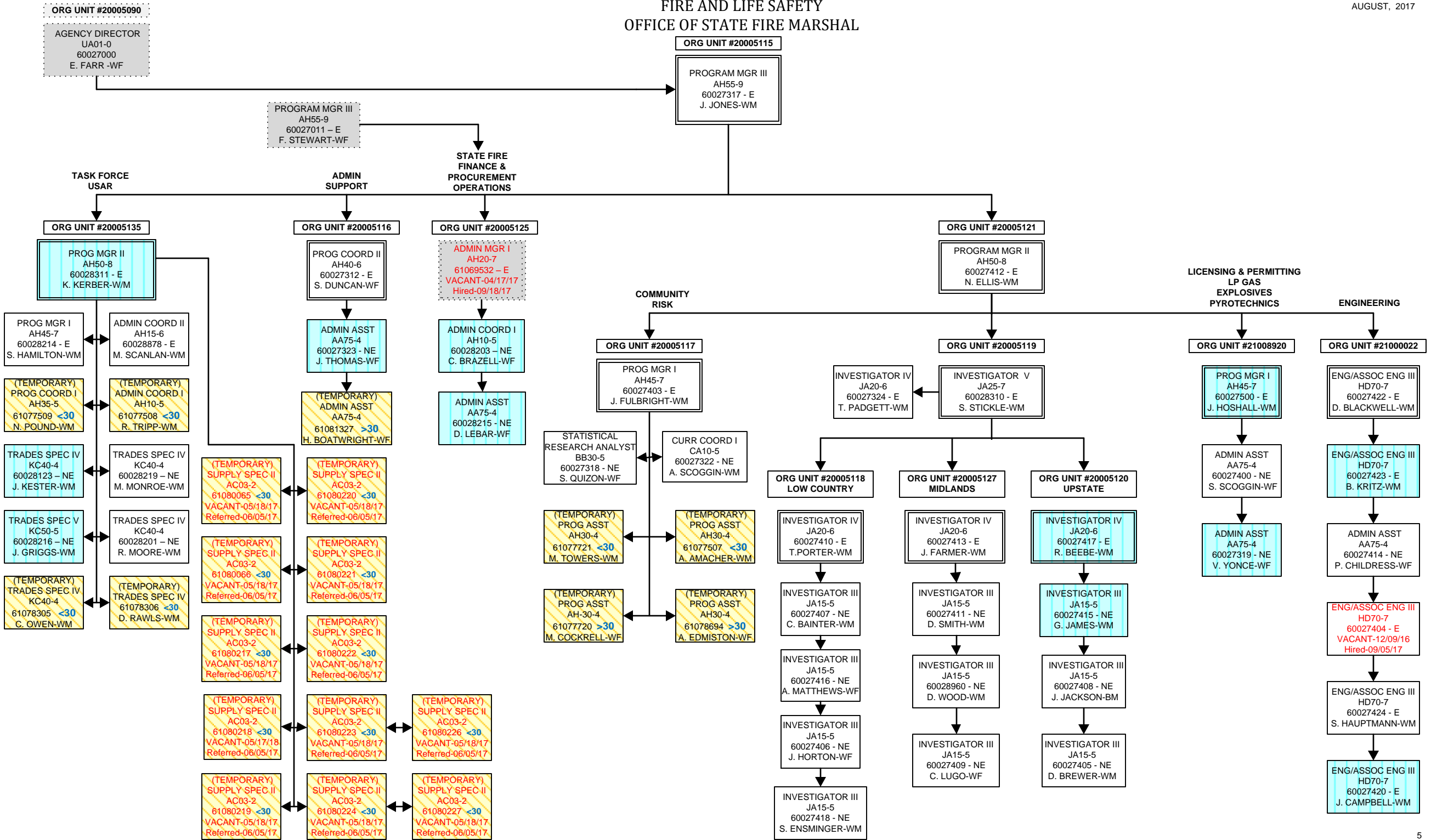
Pink Diamond		<b>TERI Employee</b>
Light Blue Square		<b>Employee returned after TERI or Retirement</b>
Turquoise Vertical Stripe		<b>Employee eligible to retire within 5 years by service or age</b>
White Solid Red Letters		<b>Vacant Position-Vacancy Date</b>
Yellow Diagonal Stripe		<b>Temporary Employee</b>
Dark Pink Outline		<b>Borrowed position</b>
NE Designation		<b>Non-exempt position</b>
E Designation		<b>Exempt position</b>





FIRE AND LIFE SAFETY  
OFFICE OF STATE FIRE MARSHAL

AUGUST, 2017



FIRE AND LIFE SAFETY  
FIRE ACADEMY

AUGUST, 2017

ORG UNIT #20005115

PROGRAM MGR III  
AH55-9  
60027317 - E  
J. JONES-WM

ORG UNIT #20005128

PROG MGR II  
AH50-8  
60028805 - E  
VACANT-06/01/17  
Referred-07/07/17

ORG UNIT #20005133

PROG MGR I  
AH45-7  
60028305 - E  
L. BUSBY-WM

GROUNDS &  
MAINTENANCE

ACCREDITATION

CURRICULUM

EMS  
COORDINATOR

ORG UNIT #20005124

ENG/ASSOC ENG II  
HD65-6  
60028202 - E  
VACANT-12/12/16  
Referred-04/17/17

ORG UNIT #21009882

PROG MGR I  
AH45-7  
60028207 - E  
G. SPINKS-WM

ORG UNIT #20005123

CURR COORD II  
CA20-6  
60028302 - E  
B. WATTERS-WF

ORG UNIT #20005126

PROG COORD II  
AH40-6  
60028204 - E  
VACANT-08/17/17

(TEMPORARY)  
FSO III  
JC70-4  
61081424 <30  
C. WADE-WM

ORG UNIT #21014468

PROG MGR I  
AH45-7  
60027120 - E  
T. WOJCIK-WM

ADMIN COORD I  
AH10-5  
60028222 - NE  
K. WHITE-BF

(TEMPORARY)  
EDU SPEC  
CA30-4  
61077843 <30  
A. ESPOSITO-WM

ORG UNIT #21000446

PROG COORD II  
AH40-6  
60028212 - E  
C. BENNETT-WM

(TEMPORARY)  
EDU SPEC  
CA30-4  
61077772 <30  
D. HANSON-WM

(TEMPORARY)  
EDU SPEC  
CA30-4  
61077773 <30  
N. MANSFIELD-WM

(TEMPORARY)  
EDU SPEC  
CA30-4  
61078198 <30  
M. DUNLAP-WM

ORG UNIT #21012579

PROG COORD I  
AH35-5  
60028209 - NE  
R. SIMPSON-WM

MEDIA RESRC  
SPEC II  
BG60-4  
60028304 - NE  
J. BLACK-WM

PROG COORD I  
AH35-5  
60028957 - NE  
W. RENKEN-WM

(TEMPORARY)  
PRINTING MGR I  
BD30-4  
61077742 >30  
F. BRANDT-WM

(TEMPORARY)  
MEDIA SPEC II  
BG60-4  
61077743 >30  
A. HIGHLAND-BF

ORG UNIT #20005122

ADMIN COORD I  
AH10-5  
60028217 - NE  
S. BUSH-BF

ADMIN ASST  
AA75-4  
60028210 - NE  
K. RIVERA-WF

ADMIN ASST  
AA75-4  
60028213 - NE  
G. EVANS-BF

ADMIN ASST  
AA75-4  
60028211 - NE  
A. ADAMS-BF

(TEMPORARY)  
FSO II  
JC70-4  
61081892 <30  
61081893 <30  
61081894 <30  
61081895 <30  
61081896 <30  
VACANT-07/27/17  
Referred-09/6/17

ORG UNIT #20005131

FOOD SERV SPEC V  
KB25-5  
60028224 - NE  
C. JERMSTAD-WM

BLDG/GRDS SPEC III  
KA15-3  
60028210 - NE  
S. WILLIAMS-BM

(TEMPORARY)  
FOOD SVC SPEC III  
KB15-3 <30  
D. CREPAEU-WM

ORG UNIT #21001228

PROG COORD I  
AH35-5  
60028206 - NE  
E. ADAMS - WM

ADMIN ASST  
AA75-4  
60028301 - NE  
A. WILLIAMSON-WF

(TEMPORARY)  
FSO II  
JC70-4  
16 TEMPS

ORG UNIT #20005129

PROG COORD I  
AH35-5  
60028221 - NE  
D. DUNCAN-WM

ADMIN ASST  
AA75-4  
60028220 - NE  
C. BAKER-WF

(TEMPORARY)  
FSO II  
JC70-4  
31 TEMPS

(TEMPORARY)  
FSO II  
JC70-4  
61081907 <30  
61081908 <30  
61081909 <30  
61081910 <30  
VACANT-07/27/17  
Referred-09/6/17

ORG UNIT #21011927

PROG COORD I  
AH35-5  
60028122 - NE  
J. MCCARLEY-WM  
EXEM GRV

(TEMPORARY)  
FSO II  
JC70-4  
18 TEMPS

(TEMPORARY)  
FSO II  
JC70-4  
61081902 <30  
61081903 <30  
16081904 <30  
VACANT-07/27/17  
Referred-09/6/17

ORG UNIT #21011926

PROG COORD I  
AH35-5  
60028307 - NE  
M. TURNER-WF

(TEMPORARY)  
FSO II  
JC70-4  
8 TEMPS

ORG UNIT #20005132

PROG COORD I  
AH35-5  
60028300 - NE  
B. CASSIDY-WM  
EXEM GRV

ADMIN ASST  
AA75-4  
60028205 - NE  
C. CANUP-WF

(TEMPORARY)  
FSO II  
JC70-4  
22 TEMPS

(TEMPORARY)  
FSO II  
JC70-4  
61081897 <30  
61081898 <30  
61081899 <30  
61081900 <30  
61081901 <30  
VACANT-07/27/17  
Referred-09/6/17

ORG UNIT #20005130

PROG COORD II  
AH40-6  
60028223 - E  
T. BROWN-BM

PROG COORD I  
AH35-5  
60028121 - NE  
M. REGAL-WM

PROG COORD I  
AH35-5  
60028124 - NE  
M. GEORGE-WM  
EXEM GRV

(TEMPORARY)  
PROG COORD I  
AH40-6  
61077868 >30  
J. HEADRICK-WM

(TEMPORARY)  
FSO II  
JC70-4  
34 TEMPS

PROG COORD I  
AH35-5  
60028208 - NE  
S. DAVIS-WM

PROG COORD I  
AH35-5  
60028952 - NE  
K. WATSON-BF

ORG UNIT #21009052

PROG COORD I  
AH35-5  
60028200 - NE  
D. CROSSLAND-WM  
EXEM GRV

(TEMPORARY)  
EQUIP OPER III  
KD45-3 >30  
61077794  
T. SHARPE-WM

(TEMPORARY)  
FSO II  
JC70-4  
21 TEMPS

PROG COORD II  
AH40-6  
60027421 - NE  
VACANT-05/19/17

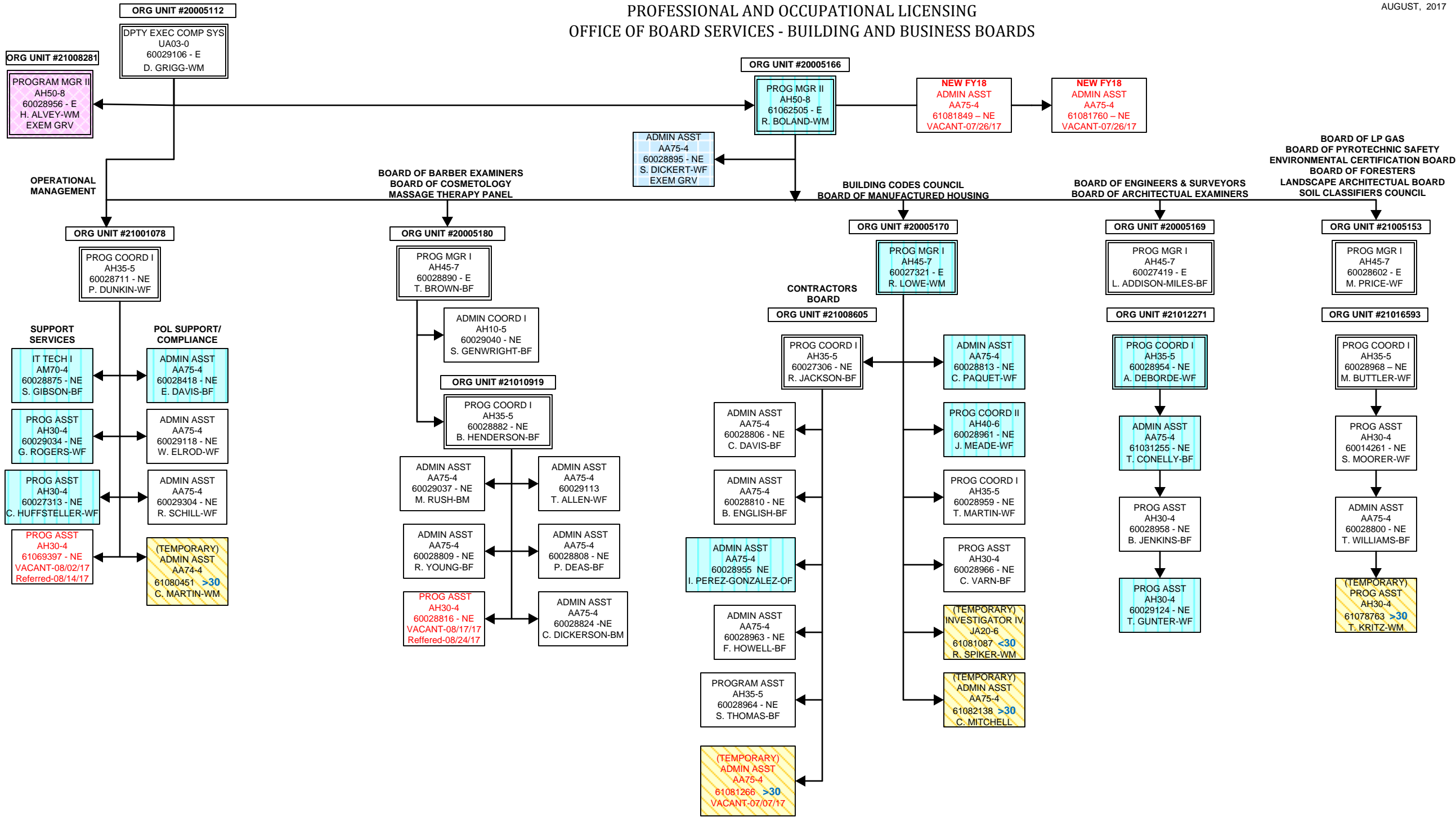
(TEMPORARY)  
INSTRU/TRAIN COORD II  
AG35-5  
61077065 <30  
A. SIMMONS-WM

(TEMPORARY)  
PROG COORD I  
AH35-5  
61081563 <30  
C. GAINEY-WM

(TEMPORARY)  
FSO II  
JC70-4  
61082665 <30  
61081905 <30  
61081906 <30  
VACANT-06/30/17  
Hired-09/18/17

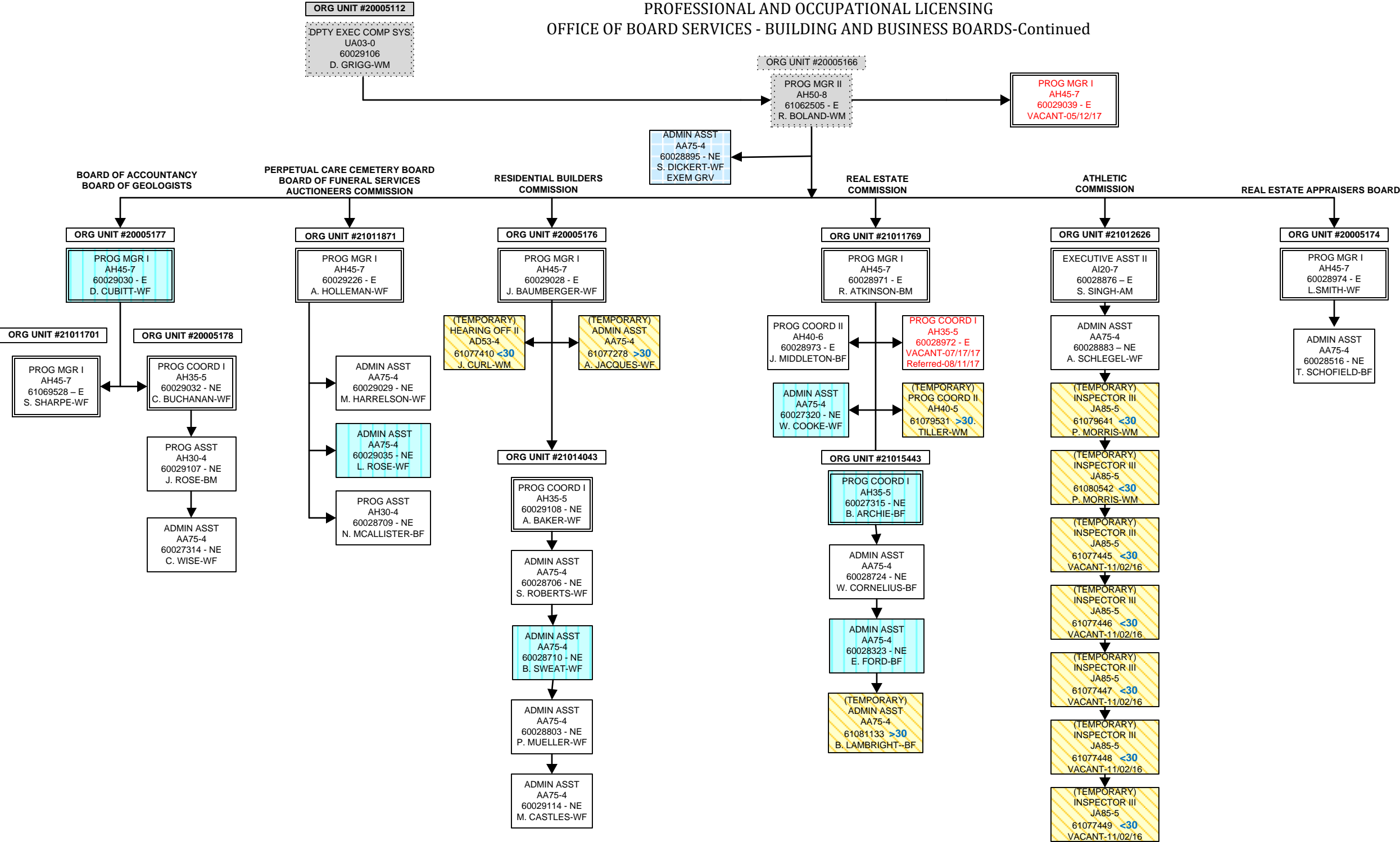
(TEMPORARY)  
EQUIP OPER III  
KD45-3 >30  
61081094 >30  
VACANT-06/09/17  
Hired-09/18/17

PROFESSIONAL AND OCCUPATIONAL LICENSING  
OFFICE OF BOARD SERVICES - BUILDING AND BUSINESS BOARDS





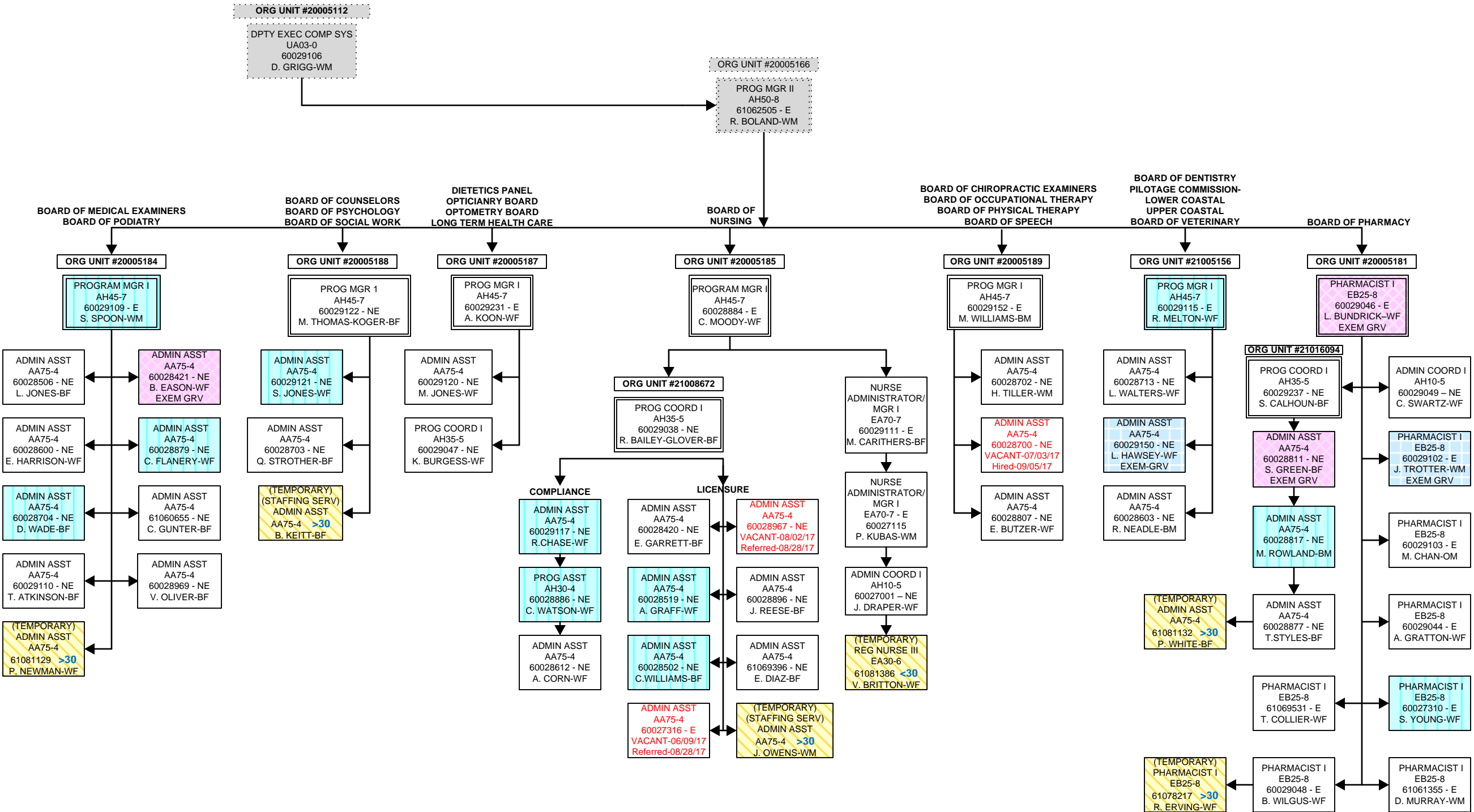
PROFESSIONAL AND OCCUPATIONAL LICENSING  
OFFICE OF BOARD SERVICES - BUILDING AND BUSINESS BOARDS-Continued



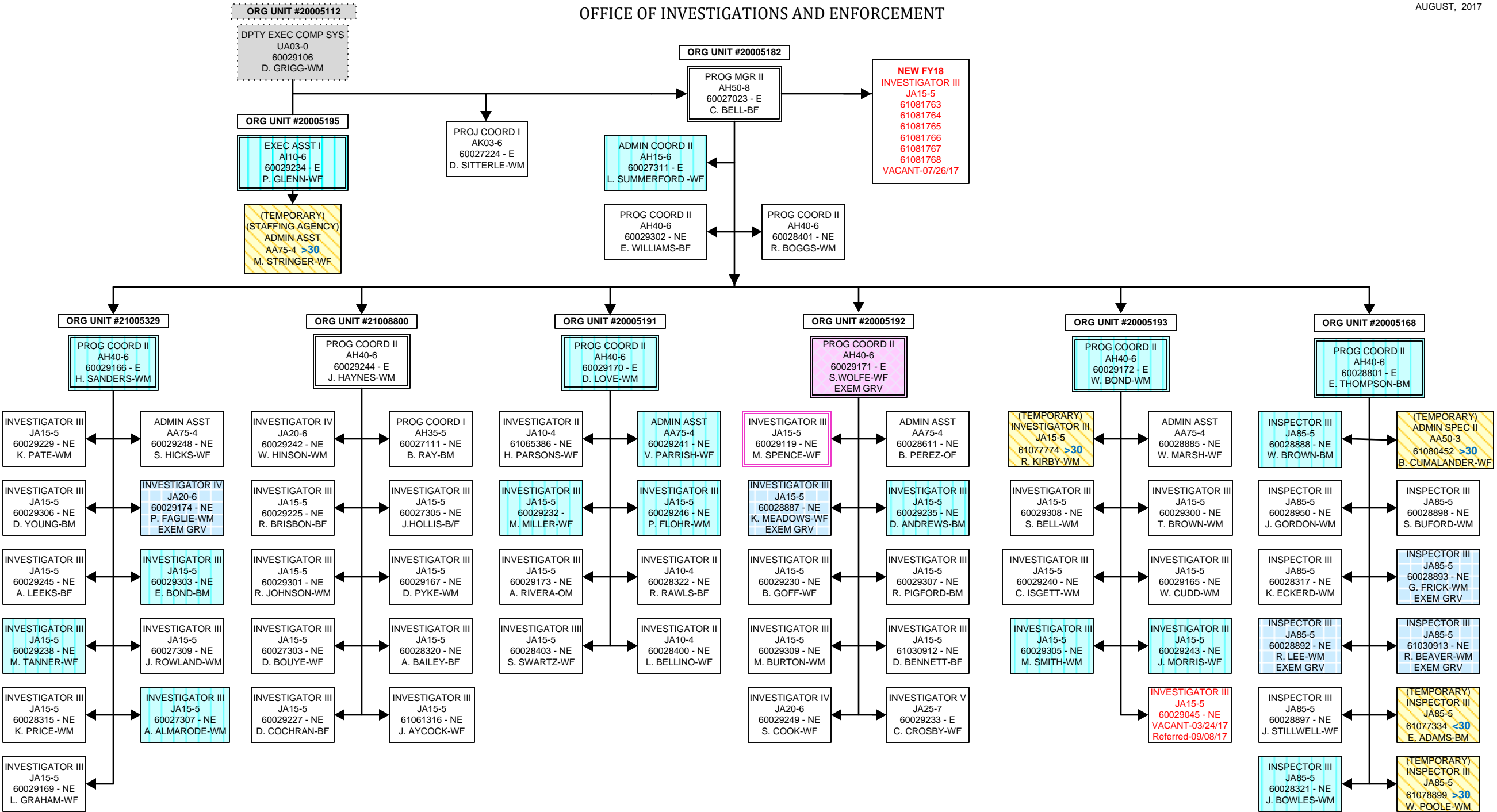


OFFICE OF BOARD SERVICES  
HEALTH AND MEDICALLY RELATED BOARDS

AUGUST, 2017



OFFICE OF INVESTIGATIONS AND ENFORCEMENT



DIVISION OF LABOR  
OSHA-COMPLIANCE

AUGUST, 2017

