



Cultural Resources Project Screening Form

File Number: PIN: Route: County:

Project Name:

Type 1: Resurfacing, installation of fencing, signs, pavement markings, traffic signals, passenger shelters, railroad warning devices, installation of rumble strips, and landscaping

Project Type

Type 2: Bridge replacements on alignment, construction of bicycle/pedestrian facilities, and intersection improvements

Type 3: Projects that do not fall into Type 1 and Type 2 categories (e.g. road widening)

Comments

This project will replace the bridge that carries S-95 over Camp Creek. The archaeological APE was a 100 ft wide corridor straddling S-95 for a distance of 700 ft to the north and 700 ft to the south of the bridge, widening to 200 ft at the bridge. The architectural APE was a 300 ft buffer around the archaeological APE. Background review indicated that no previously recorded cultural resources were located within the study area. A cultural resources field survey was conducted on Jan. 24, 2019. The survey consisted of a pedestrian reconnaissance of the study area augmented by the excavation of STPs at 30 meter intervals within the archaeological APE. A total of 20 STPs were excavated. Nineteen additional potential STP locations were examined but not excavated due to ground conditions. The STP totals include delineations for two artifacts, a prehistoric flake fragment and a historic ceramic sherd. No additional artifacts were recovered during delineation and these items were recorded as isolated finds. No other archaeological remains were noted during the survey, but two new historic resources were recorded (Site Nos . 0177 and 0177.01). Both were assessed as not eligible for the NRHP. No further investigations are recommended.

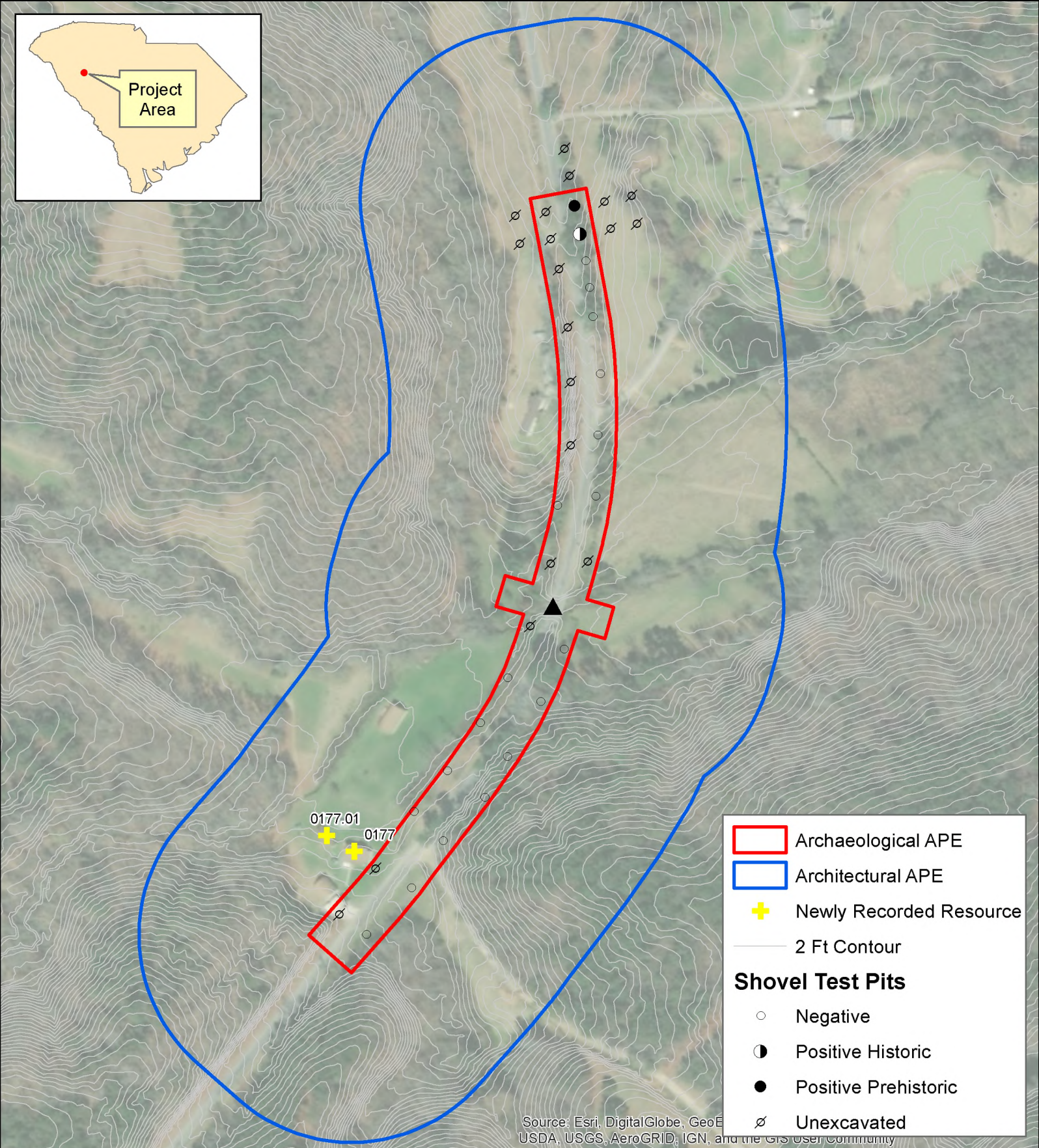
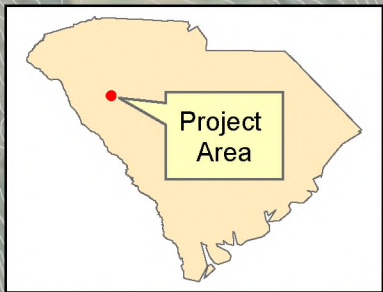
Effect Determination:

*SHPO consultation is required for all Type 3 projects and any project with a No Adverse or Adverse Effect Determination.

This screening form was developed to satisfy documentation requirements for Type I and Type II projects under a Programmatic Agreement between the Federal Highway Administration, the South Carolina State Historic Preservation Office, the US Army Corps of Engineers, and the South Carolina Department of Transportation. For Type I and Type II projects that have no effect on historic properties, the completion of this screening form with supporting documentation (e.g. ArchSite Map) provides evidence of FHWA and SCDOT's compliance with Section 106 of the National Historic Preservation Act.

Prepared by:

Review Date:



- Archaeological APE
- Architectural APE
- Newly Recorded Resource
- 2 Ft Contour
- Shovel Test Pits**
 - Negative
 - Positive Historic
 - Positive Prehistoric
 - Unexcavated

Date:
February 6, 2019

Greenwood County
Load Restricted Bridges

**S-95 (Ridge Road)
over Camp Creek**



Project ID: P038063

