
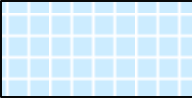
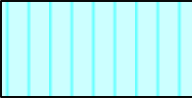



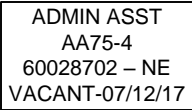
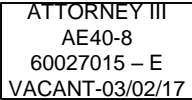


SOUTH CAROLINA  
DEPARTMENT OF LABOR, LICENSING AND REGULATION  
ORGANIZATIONAL CHART

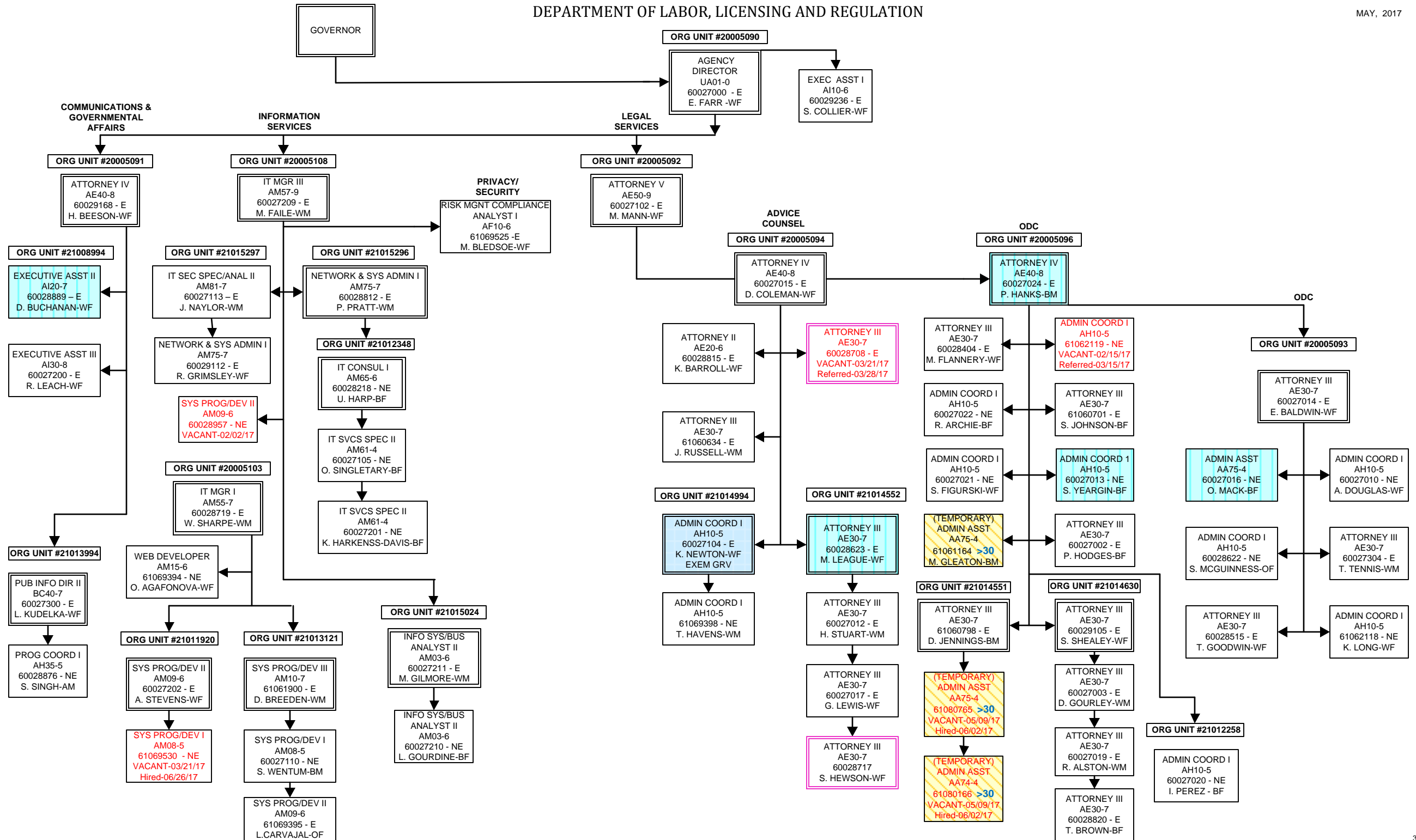
MAY 2017

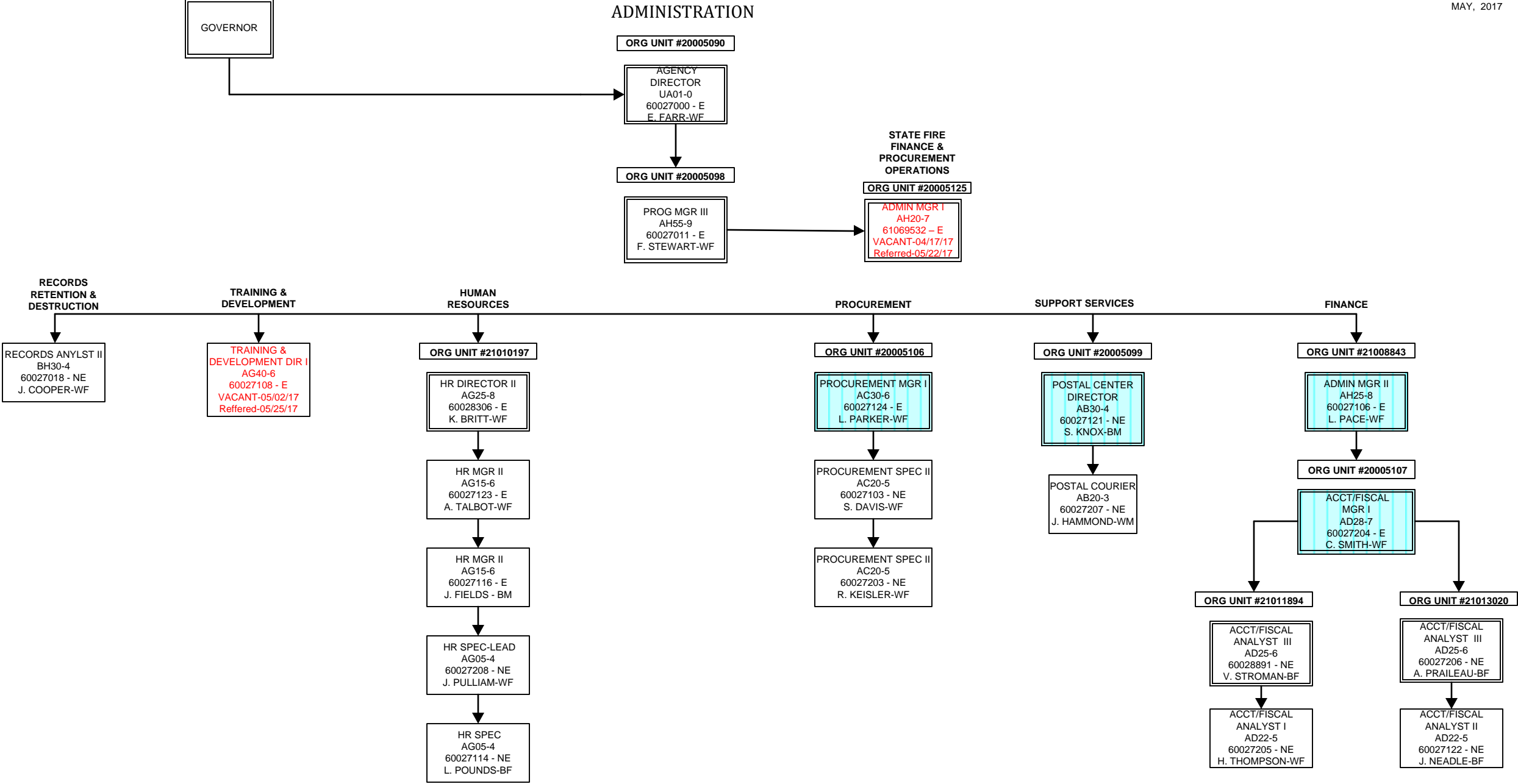
SOUTH CAROLINA  
DEPARTMENT OF LABOR, LICENSING AND REGULATION  
ORGANIZATIONAL CHARTS

Pink Diamond		TERI Employee
Light Blue Square		Employee returned after TERI or Retirement
Turquoise Vertical Stripe		Employee eligible to retire within 5 years by service or age
White Solid Red Letters		Vacant Position-Vacancy Date
Yellow Diagonal Stripe		Temporary Employee
Dark Pink Outline		Borrowed position
NE Designation		Non-exempt position
E Designation		Exempt position

## DEPARTMENT OF LABOR, LICENSING AND REGULATION

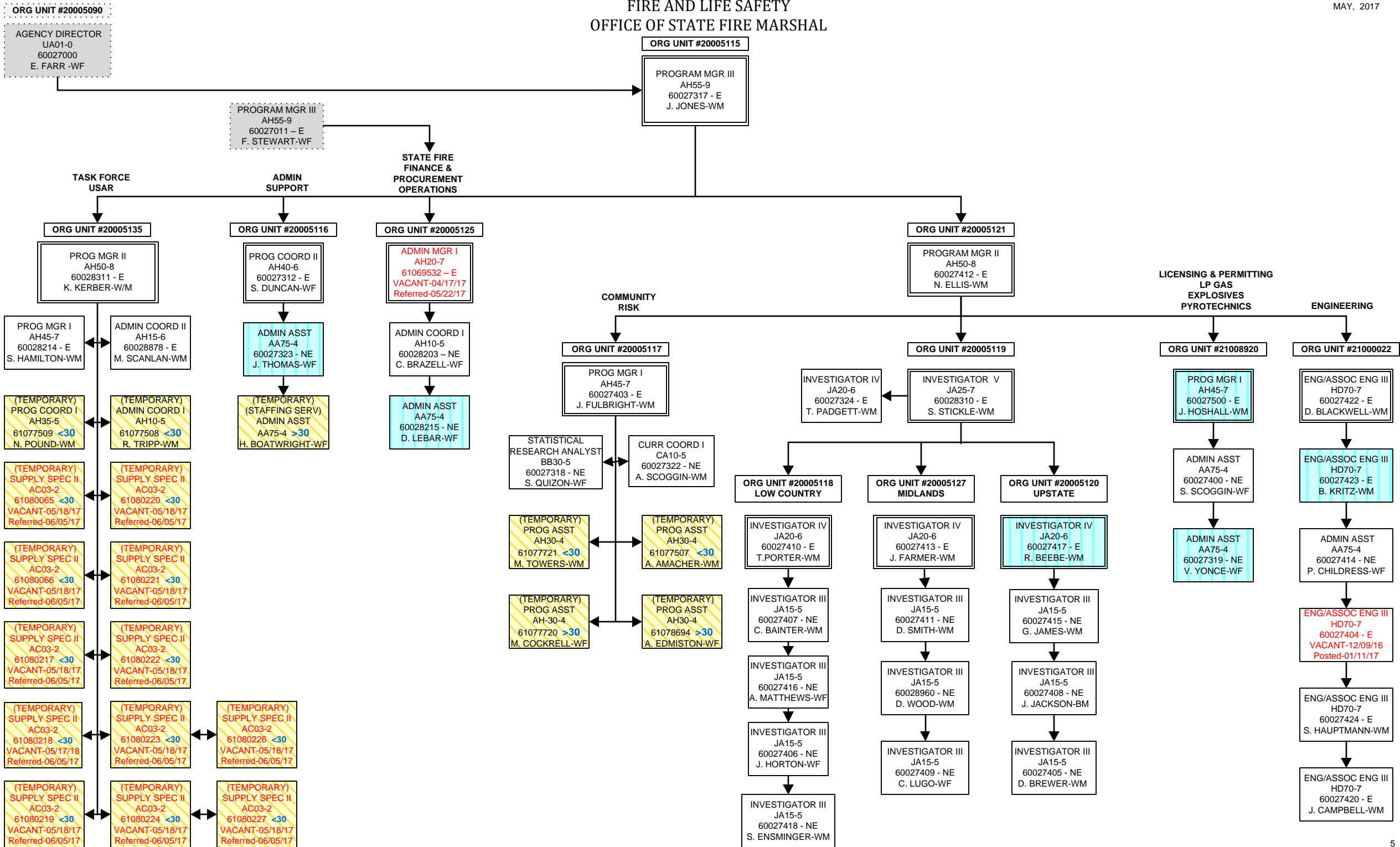
MAY, 2017





FIRE AND LIFE SAFETY  
OFFICE OF STATE FIRE MARSHAL

MAY, 2017



FIRE AND LIFE SAFETY  
FIRE ACADEMY

MAY, 2017

ORG UNIT #20005115

PROGRAM MGR III  
AH55-9  
60027317 - E  
J. JONES-WM

ORG UNIT #20005128

ACTING  
PROG MGR II  
AH50-8  
60028805 - E  
P. RUSSELL

GROUND  
S &  
MAINTENANCE

CURRICULUM  
ACCREDITATIONS

REGIONAL  
TRAINING

EMS  
COORDINATOR

ORG UNIT #20005124

ENG/ASSOC ENG II  
HD65-6  
60028202 - E  
VACANT-12/12/16  
Referred-04/17/17

TRADES SPEC IV  
KC40-4  
60028123 - NE  
J. KESTER-WM

TRADES SPEC IV  
KC40-4  
60028219 - NE  
M. MONROE-WM

TRADES SPEC V  
KC50-5  
60028216 - NE  
J. GRIGGS-WM

TRADES SPEC IV  
KC40-4  
60028201 - NE  
R. MOORE-WM

(TEMPORARY)  
TRADES SPEC IV  
KC40-4  
61078305 <30  
C. OWEN-WM

(TEMPORARY)  
TRADES SPEC IV  
KC40-4  
61078306 <30  
D. RAWLS-WM

ORG UNIT #21009882

PROG MGR I  
AH45-7  
60028207 - E  
G. SPINKS-WM

ADMIN COORD I  
AH10-5  
60028222 - NE  
K. WHITE-BF

(TEMPORARY)  
FSO II  
JC70-4  
61077843 <30  
A. ESPOSITO-WM

ORG UNIT #21000446

PROG COORD II  
AH40-6  
60028212 - E  
C. BENNETT-WM

(TEMPORARY)  
EDU SPEC  
CA30-4  
61077772 <30  
D. HANSON-WM

(TEMPORARY)  
EDU SPEC  
CA30-4  
61077773 <30  
N. MANSFIELD-WM

(TEMPORARY)  
EDU SPEC  
CA30-4  
61077770 <30  
Y. MUHAMMAD-BM

ORG UNIT #20005123

CURR COORD II  
CA20-6  
60028302 - E  
B. WATTERS-WF

ORG UNIT #21012579

PROG COORD I  
AH35-5  
60028209 - NE  
R. SIMPSON-WM

MEDIA RESRC  
SPEC II  
BG60-4  
60028304 - NE  
J. BLACK-WM

(TEMPORARY)  
PRINTING MGR I  
BD30-4  
61077742 >30  
F. BRANDT-WM

(TEMPORARY)  
MEDIA SPEC II  
BG60-4  
61077743 >30  
A. HIGHLAND-BF

(TEMPORARY)  
MEDIA SPEC II  
BG60-4  
61077744 >30  
W. RENKIN-WM

(TEMPORARY)  
FSO II  
JC70-4  
61078198 <30  
M. DUNLAP-WM

ORG UNIT #20005122  
ADMINISTRATION

ADMIN COORD I  
AH10-5  
60028217 - NE  
S. BUSH-BF

ADMIN ASST  
AA75-4  
60028303 - NE  
K. RIVERA-WF

ADMIN ASST  
AA75-4  
60028213 - NE  
G. EVANS-BF

ADMIN ASST  
AA75-4  
60028211 - NE  
A. ADAMS-BF

ORG UNIT #20005131  
HOSPITALITY

FOOD SERV SPEC V  
KB25-5  
60028224 - NE  
C. JERMSTAD-WM

BLDG/GRDS SPEC III  
KA15-3  
60028210 - NE  
S. WILLIAMS-BM

(TEMPORARY)  
FOOD SVC SPEC III  
KB15-3 <30  
D. CREPAEU-WM

ORG UNIT #20005129  
REGION 1 GREENVILLE

PROG COORD I  
AH35-5  
60028221 - NE  
D. DUNCAN-WM

ADMIN ASST  
AA75-4  
60028220 - NE  
C. BAKER-WF

(TEMPORARY)  
FSO II  
JC70-4  
31 TEMPS

ORG UNIT #21001228  
REGION 5 CHARLESTON

PROG COORD I  
AH35-5  
60028206 - NE  
E. ADAMS - WM

ADMIN ASST  
AA75-4  
60028301 - NE  
A. WILLIAMSON-WF

(TEMPORARY)  
FSO II  
JC70-4  
16 TEMPS

ORG UNIT #21011926  
REGION 6 AIKEN

PROG COORD I  
AH35-5  
60028307 - NE  
M. TURNER-WF

(TEMPORARY)  
FSO II  
JC70-4  
8 TEMPS

ORG UNIT #21011927  
REGION 2 YORK CO.

PROG COORD I  
AH35-5  
60028122 - NE  
J. MCCARLEY-WM  
EXEM GRV

(TEMPORARY)  
FSO II  
JC70-4  
18 TEMPS

ORG UNIT #20005132  
REGION 4 FLORENCE

PROG COORD I  
AH35-5  
60028300 - NE  
B. CASSIDY-WM  
EXEM GRV

ADMIN ASST  
AA75-4  
60028205 - NE  
C. CANUP-WF

(TEMPORARY)  
FSO II  
JC70-4  
22 TEMPS

(TEMPORARY)  
FSO II  
JC70-4  
61078720 <30  
61078721 <30  
61078722 <30  
61078723 <30  
61078724 <30  
61078725 <30  
61078726 <30  
61078727 <30  
61078728 <30  
61078729 <30  
VACANT-02/02/17  
Referred-03/06/17

ONSITE  
ACADEMY  
TRAINING

ORG UNIT #20005126

PROG COORD II  
AH40-6  
60028204 - E  
R. BUSBY-WM

PROG COORD I  
AH35-5  
60028208 - NE  
S. DAVIS-WM

PROG COORD I  
AH35-5  
60028952 - NE  
K. WATSON-UN

(TEMPORARY)  
FSO II  
JC70-4  
61077794 <30  
T.SHARPE-WM

(TEMPORARY)  
FSO II  
JC70-4  
42 TEMPS

PROG COORD I  
AH35-5  
60028124 - NE  
M. GEORGE-WM  
EXEM GRV

ORG UNIT #20005130

PROG COORD II  
AH40-6  
60028223 - E  
T. BROWN-BM

PROG COORD I  
AH35-5  
60028121 - NE  
M. REGAL-WM

PROG COORD I  
AH35-5  
60028200 - NE  
D. CROSSLAND-WM  
EXEM GRV

(TEMPORARY)  
FSO II  
JC70-4  
12 TEMPS

ORG UNIT #21014468

PROG MGR I  
AH45-7  
60027120 - E  
T. WOJCIK-WM

PROG COORD II  
AH40-6  
60027421 - NE  
VACANT-05/19/17

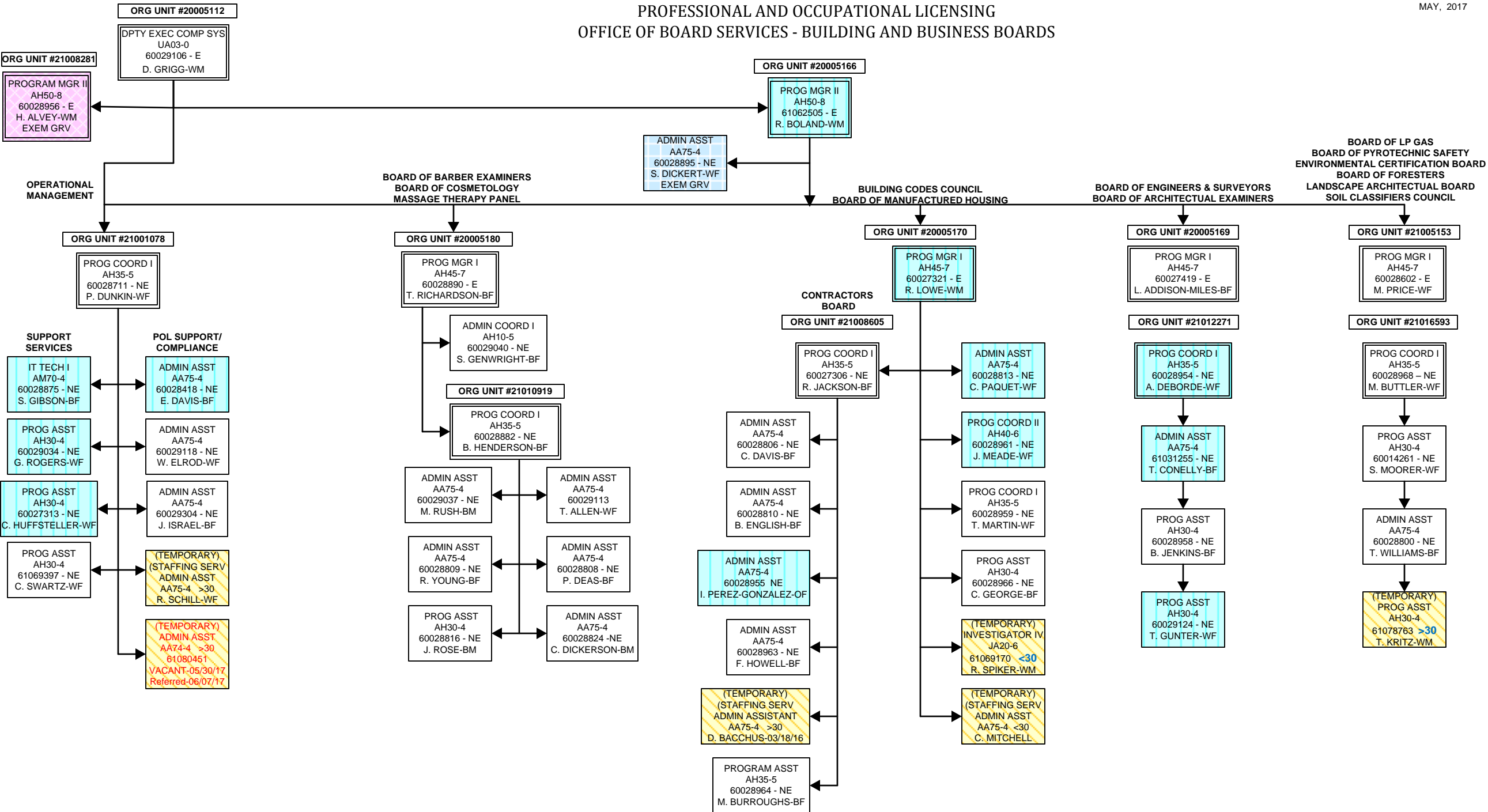
(TEMPORARY)  
PROG COORD I  
AH35-5  
61069161 <30  
C. GAINEY-WM

(TEMPORARY)  
INSTRU/TRAIN COORD II  
AG35-5  
61077065 <30  
A. SIMMONS-WM

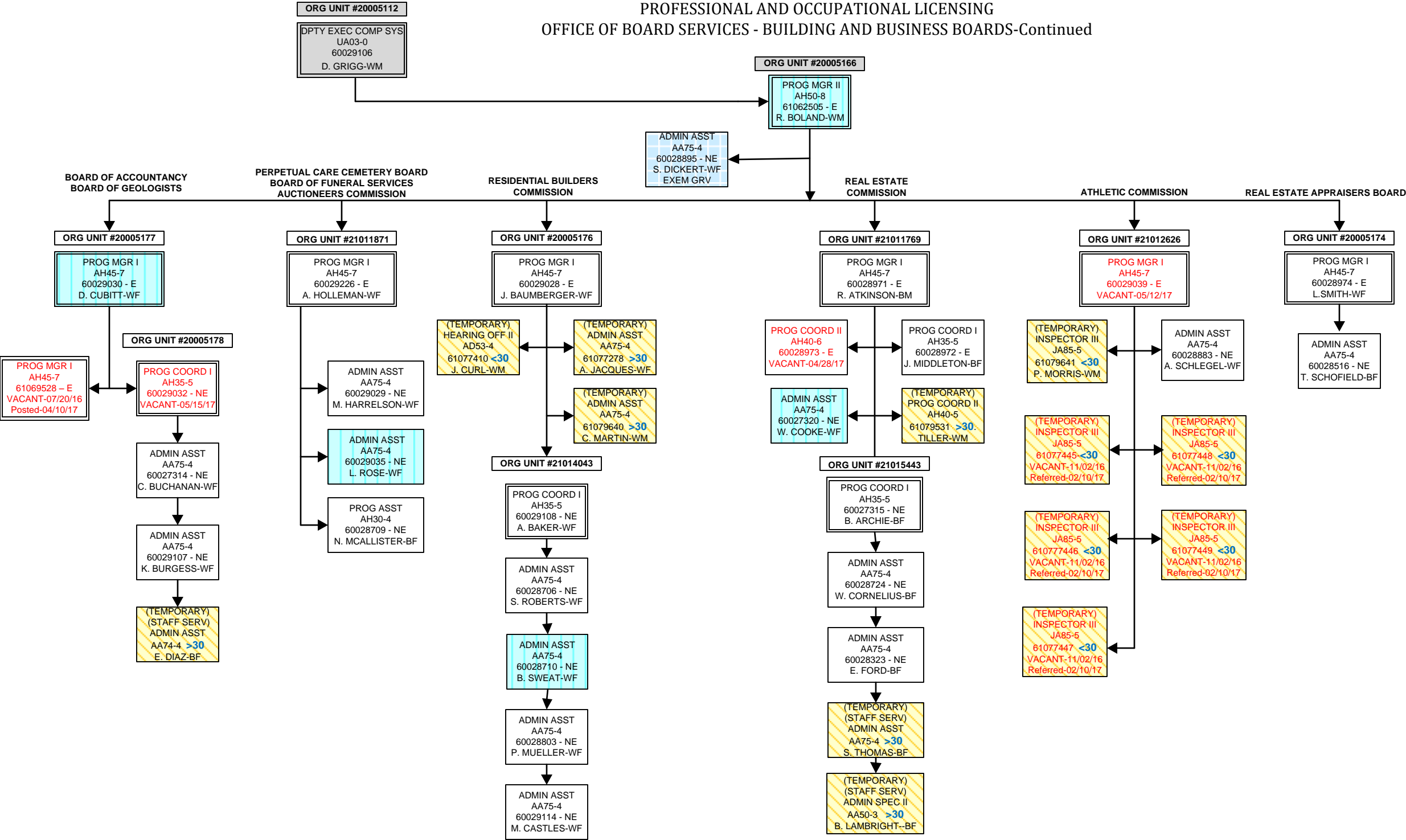
ORG UNIT #21009052

PROG COORD I  
AH35-5  
60028124 - NE  
M. GEORGE-WM  
EXEM GRV

PROFESSIONAL AND OCCUPATIONAL LICENSING  
OFFICE OF BOARD SERVICES - BUILDING AND BUSINESS BOARDS

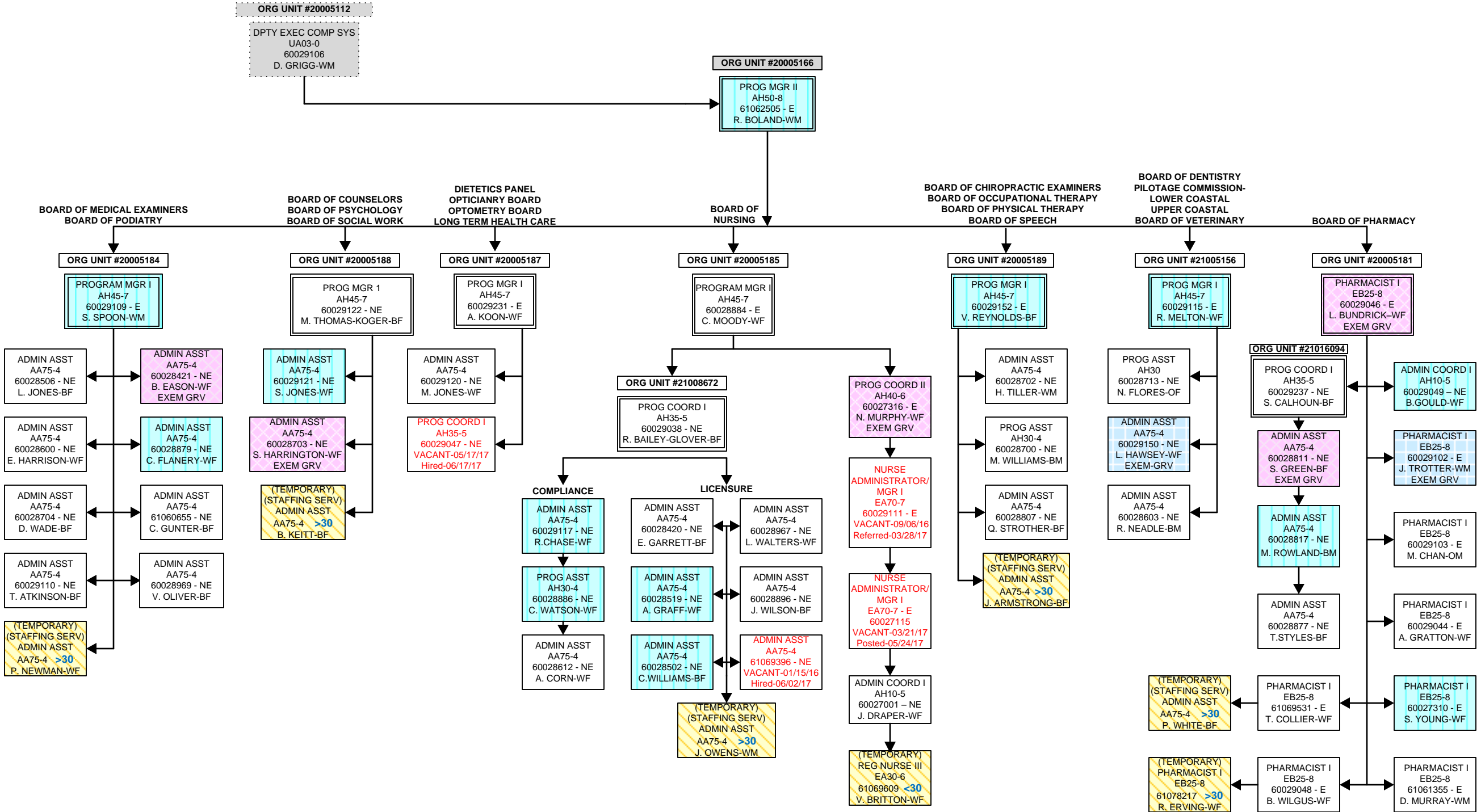


PROFESSIONAL AND OCCUPATIONAL LICENSING  
OFFICE OF BOARD SERVICES - BUILDING AND BUSINESS BOARDS-Continued



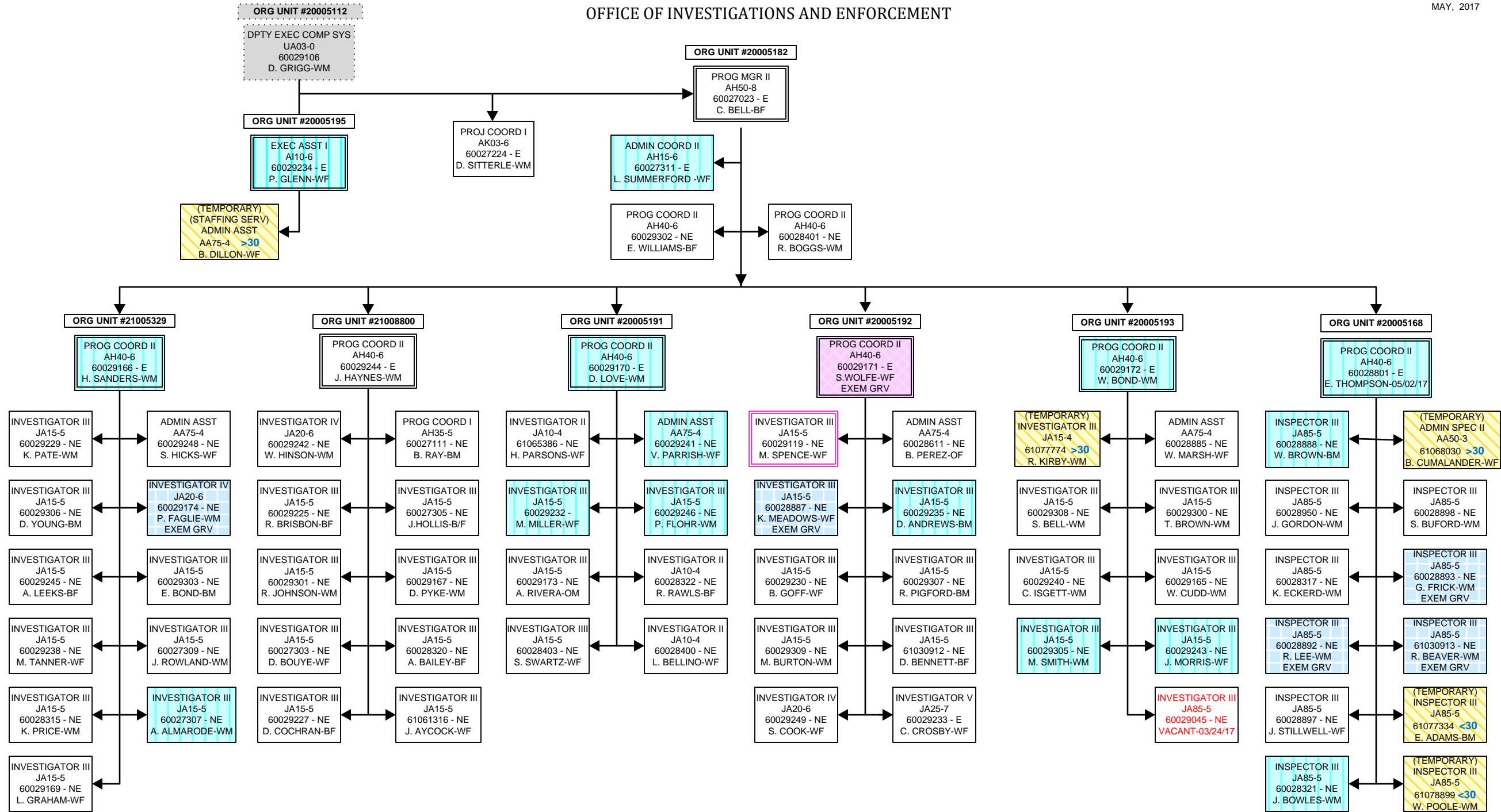


OFFICE OF BOARD SERVICES  
HEALTH AND MEDICALLY RELATED BOARDS



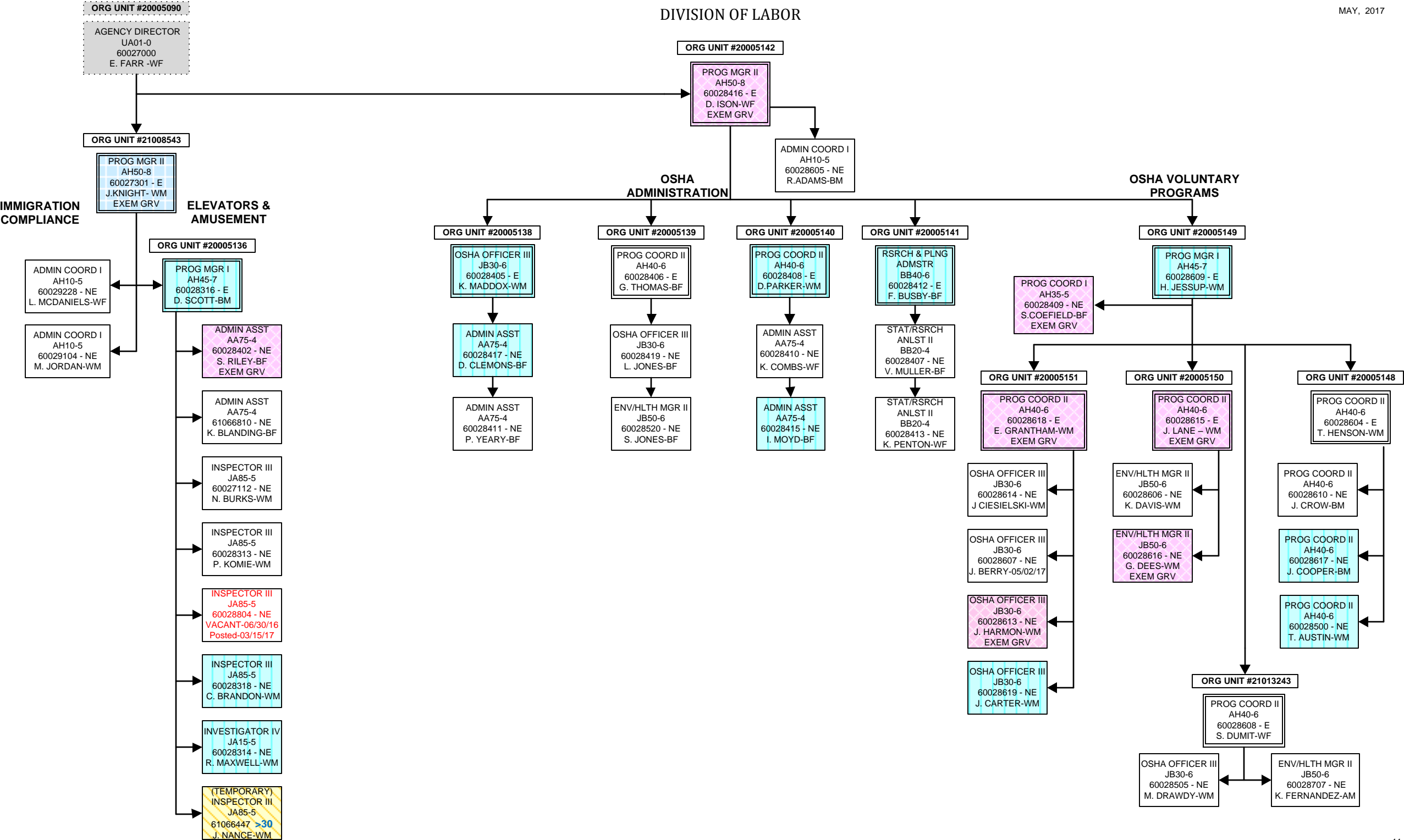
OFFICE OF INVESTIGATIONS AND ENFORCEMENT

MAY, 2017



DIVISION OF LABOR

MAY, 2017



DIVISION OF LABOR  
OSHA-COMPLIANCE

MAY, 2017

