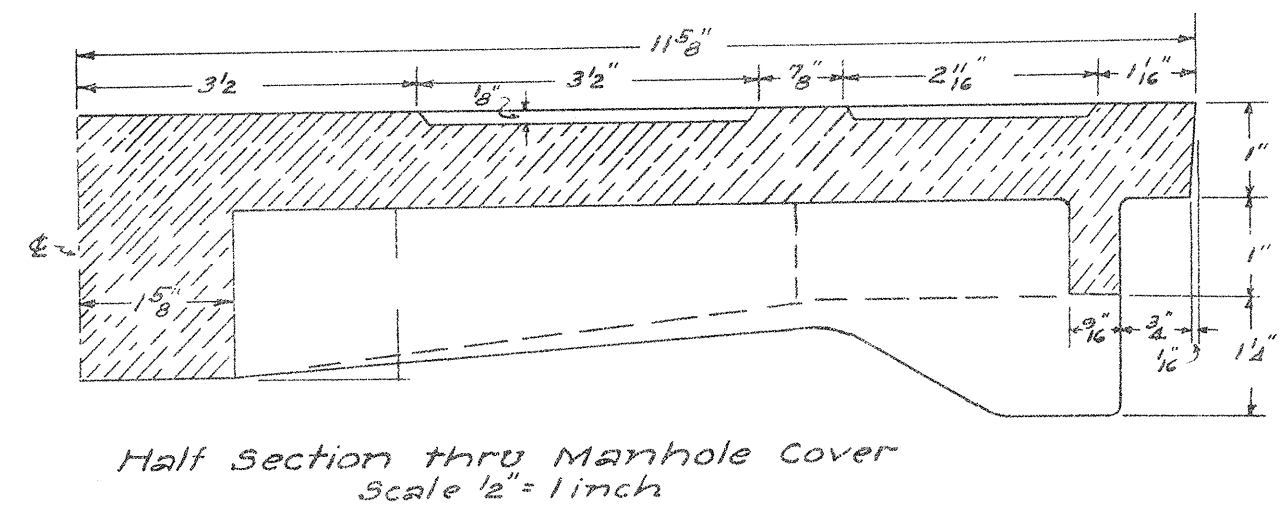


Note: Details of Manhole Castings and Construction as shown on this sheet are standard for the City of Columbia.

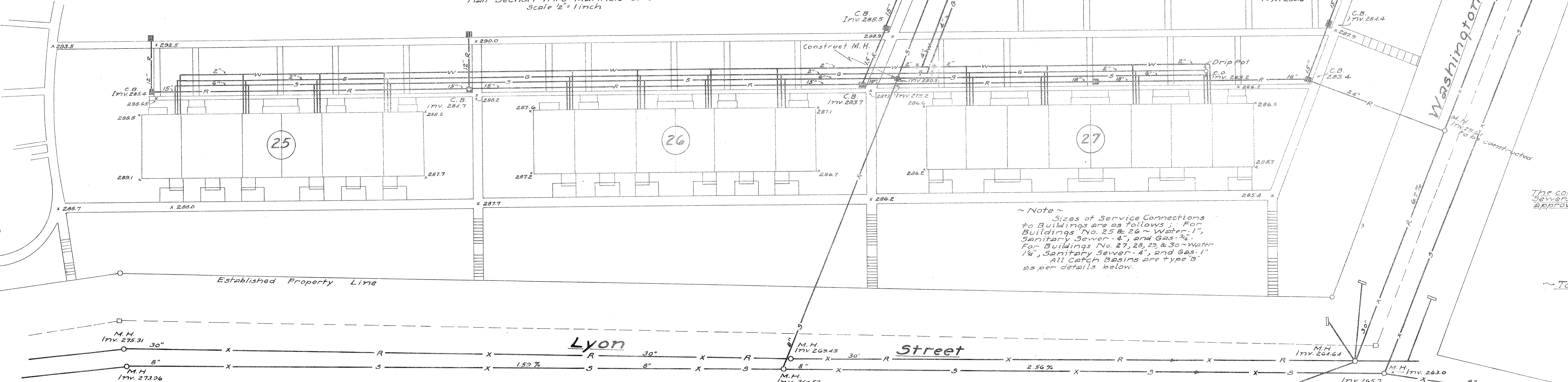


Note: Sizes of Service Connections to Buildings are as follows: For Buildings No. 25 & 26 - Water 1", Sanitary Sewer 4", and Gas 3/4". For Buildings No. 27, 28, 29 & 30 - Water 1 1/4", Sanitary Sewer 4", and Gas 1". All Catch Basins are type "B" as per details below.

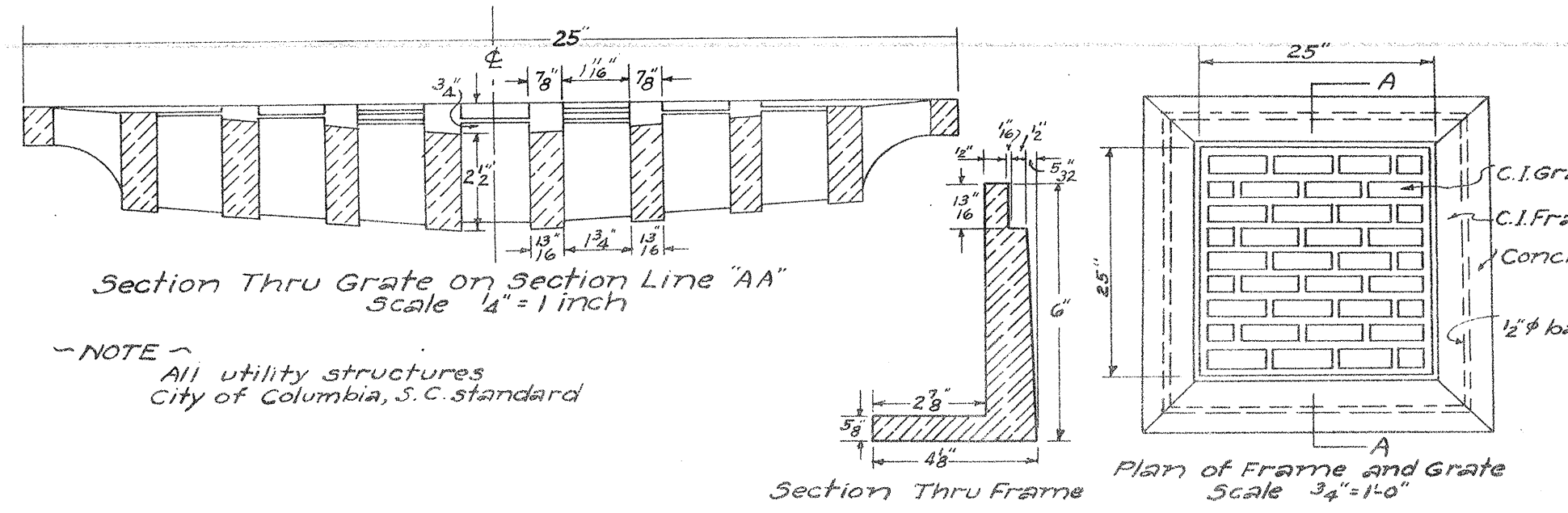
Note: Clean outs on ends of Sanitary sewer lines indicate a pipe branch for the service connection with the end of the main plugged with a TC or concrete plug cemented in place.

The connections to City of Columbia Sewers shown hereon and hereby approved W.S. Tomlinson, City Engr.

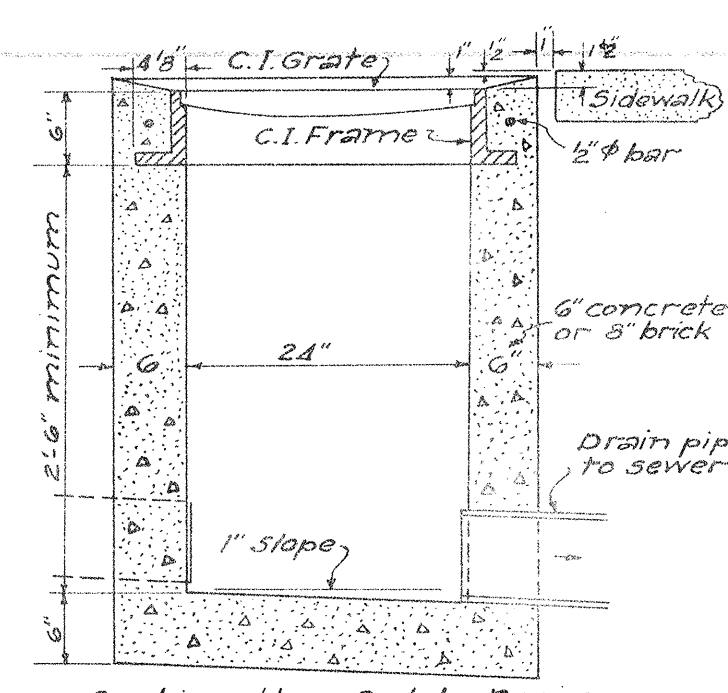
Tomlinson Engineering Co. Columbia, S.C. Engineers



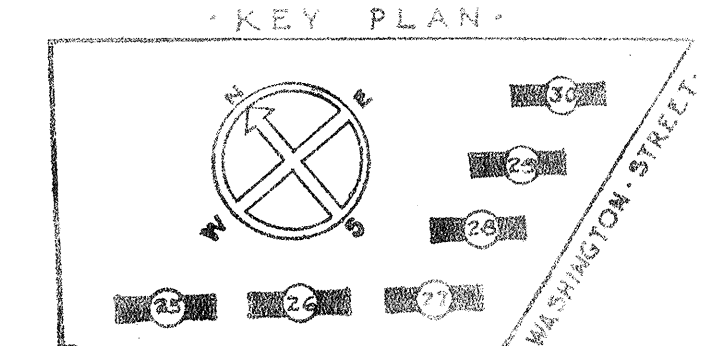
- Legend
- Existing Storm Sewers
  - Existing Sanitary Sewers
  - Storm Sewers
  - Sanitary Sewers
  - Manholes
  - Catch Basins (Type B)
  - Water Mains
  - Gas Mains
  - Gate Valves



DETAILS OF TYPE "B" CATCH BASIN



Location of Type "B" Catch Basin At Sidewalk Intersection Scale 1/4" = 1 inch



SHEET TITLE		GENERAL SITE PLAN	
BUILDINGS 25-26-27-28-29-30		GONZALES GARDENS EXTENSION	
LOW RENT HOUSING PROJECT, COLUMBIA, S.C.		DEVELOPED BY	
THE HOUSING AUTHORITY OF THE CITY OF COLUMBIA, S.C.		JAMES B. URBAN	
UNDER LEASE CONTRACT WITH		FEDERAL PUBLIC HOUSING AUTHORITY	
CHECKED:	APPROVED BY:	DATE:	SCALE:
DATE:	ADMINISTRATOR:	DATE:	1/32" = 1'-0" & AS NOTED
REVISIONS:	APPROVED BY:	DATE:	OP 606
JAMES B. URBAN		ARCHITECT	
JAMES B. URBAN		DATE 3-2-42	