

PROPOSAL FOR A PARTNERSHIP BETWEEN THE
UNIVERSITY OF SOUTH CAROLINA AND THE MEDICAL UNIVERSITY OF SOUTH CAROLINA

Introduction

Joint participation by the University of South Carolina and the Medical University of South Carolina in the Statewide Consortium of Teaching Hospitals Programs (Graduate Medical Doctor, Statewide Family Practice Residency and AHEC/Undergraduate Education Programs) is both appropriate and desirable. Such participation can be achieved by the development of a new and equal relationship between the two Universities. This relationship must be designed to facilitate the maximum use of available resources while recognizing the unique features that exist at each institution. The following proposal represents a mechanism for joint planning to promote the development of this new relationship.

Structures for Collaboration

A "Joint Board Committee" is to be established. The committee would consist of six members: two representatives of each board of trustees and the presidents of both universities or their designees. The committee would meet semi-annually to consider matters of concern to the Consortium and the Universities. More specifically, the committee will receive and approve the consortium budget and forward it to each of the university boards of trustees which will each approve (or veto) but not alter the budget. MUSC will continue its role presently as the conduit for State funding to the Consortium and will receive such funds in a manner which can be allocated only to Consortium sites, Family Practice sites and Consortium administration costs by a "line item" budget approved by the Joint Board Committee. Actions by the committee would be based upon unanimous agreement. Among other matters, committee business might include the study of the distribution of consortium resources and the establishment of a plan for the joint recruitment of medical students. The committee will seek authorization from each board of trustees to pursue specific items of interest and will not be empowered to establish general policy but will refer such matters to the respective Boards of Trustees.

A "Presidents Committee" is to be established comprised of the presidents of the teaching hospitals of the consortium and the presidents of USC and MUSC. The purpose of this committee is to increase participation by the teaching hospital presidents in the affairs of the consortium. More specifically the committee is to review the proposed budgets and develop general policies relating to the Consortium which will be passed on to the Joint Board Committee.

Resolution

Whereas the Medical University of South Carolina and the University of South Carolina are committed to the establishment of a new relationship and the development of a partnership in the Consortium Program for the promotion and enhancement of medical and health education programs in South Carolina,

Therefore, be it resolved, that there be established a "Joint Board Committee" comprised of two representatives of each Board of Trustees and the Presidents of both universities or their designees,

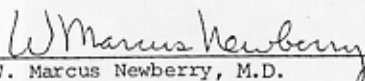
Be it further resolved that the Medical University of South Carolina and the University of South Carolina endorse the establishment of a "Presidents Committee" comprised of the Presidents of the teaching hospitals of the Consortium and the Presidents of each University,

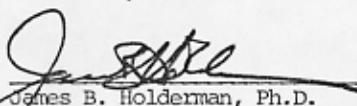
Be it further resolved that the attached schema, entitled "Consolidated Plan for Medical and Health Education" is not intended to constrain and is subject to modification but is consonant with wishes of both universities for the orderly structuring of medical and health education programs.

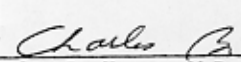
Attachment

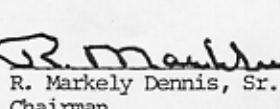
/egc

August 12, 1982

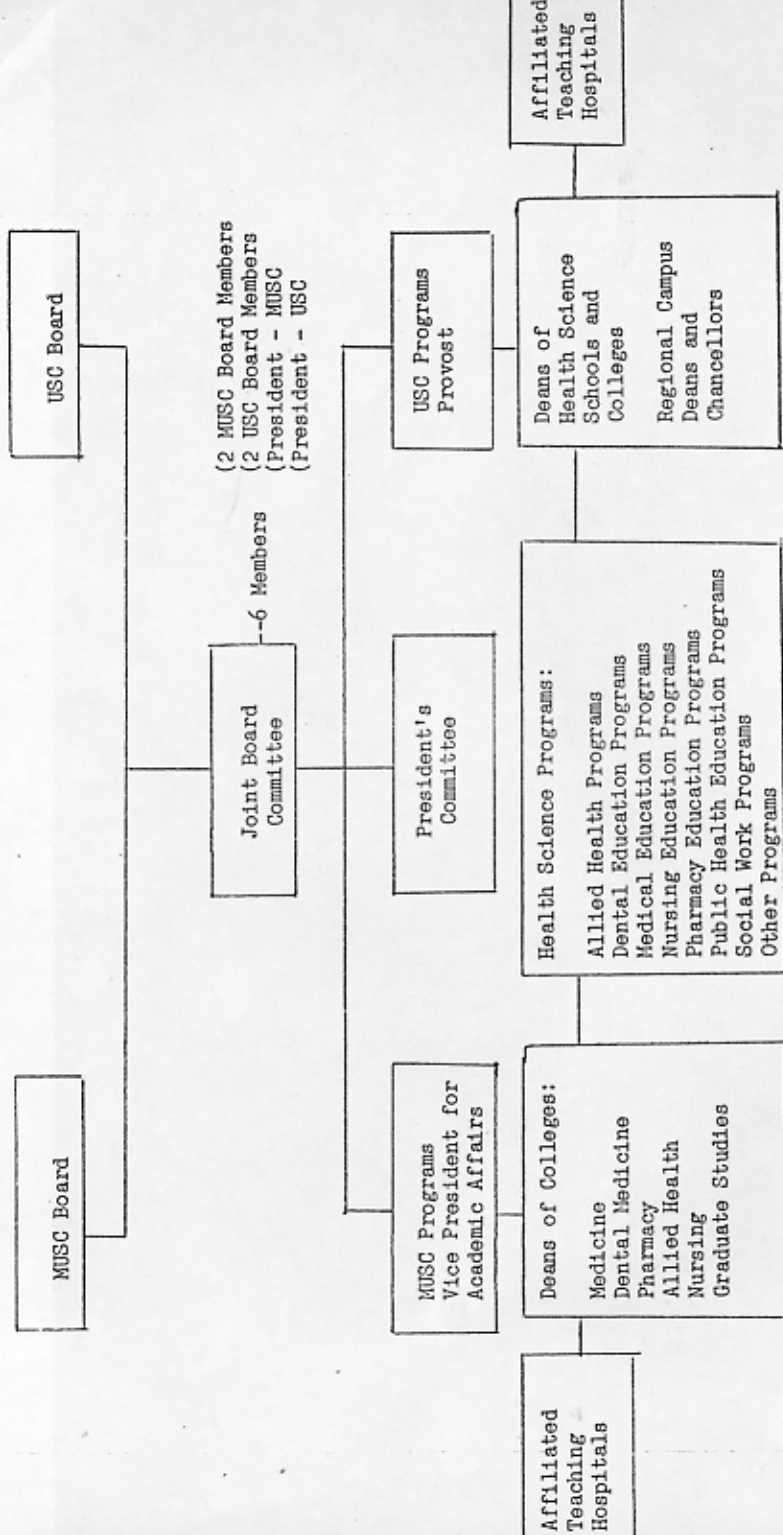

W. Marcus Newberry, M.D.
Interim President
Medical University of South Carolina


James B. Holderman, Ph.D.
President
University of South Carolina


Charles B. Hanna, M.D.
Chairman
MUSC Board of Trustees


R. Markely Dennis, Sr.
Chairman
USC Board of Trustees

PROPOSED STRUCTURE FOR A PARTNERSHIP BETWEEN
MEDICAL UNIVERSITY OF SOUTH CAROLINA AND UNIVERSITY OF SOUTH CAROLINA



*To include medical, pharmacy, dental, nursing, allied health, graduate doctor, family practice and the consortium of teaching hospitals.

August 12, 1982