



Cultural Resources Project Screening Form

File Number: PIN: Route: County:

Project Name:

Type 1: Resurfacing, installation of fencing, signs, pavement markings, traffic signals, passenger shelters, railroad warning devices, installation of rumble strips, and landscaping

Project Type

Type 2: Bridge replacements on alignment, construction of bicycle/pedestrian facilities, and intersection improvements

Type 3: Projects that do not fall into Type 1 and Type 2 categories (e.g. road widening)

Comments

This project involves the construction of a sidewalk along the west side of Chestnut St (US-178) between Goff Ave and Belleville Rd measuring approximately 2,800 feet in length. The project area was reviewed using ArchSite, Google Earth, and historical imagery. The ArchSite review showed no previously recorded cultural resources within or nearby the project area. A field visit was made Oct. 2, 2019. The project area is of limited size and within existing right-of-way, which is heavily disturbed from the construction of Chestnut St and utilities. No shovel test pits were excavated. It is unlikely that intact undiscovered cultural resources are present within the project area. Because of the limited visual impact this project will have, the architectural resources buffer was restricted to just those resources facing Chestnut Road. The proposed sidewalk is located in an area with moderate residential and commercial development and six architectural resources were recorded (00364 – 00369). These resources include two mid-20th century houses, one late 1960s commercial building, and three mid-1960s era mobile homes. None of the resources are recommended eligible for the National Register of Historic Places. No additional cultural resources investigations are recommended.

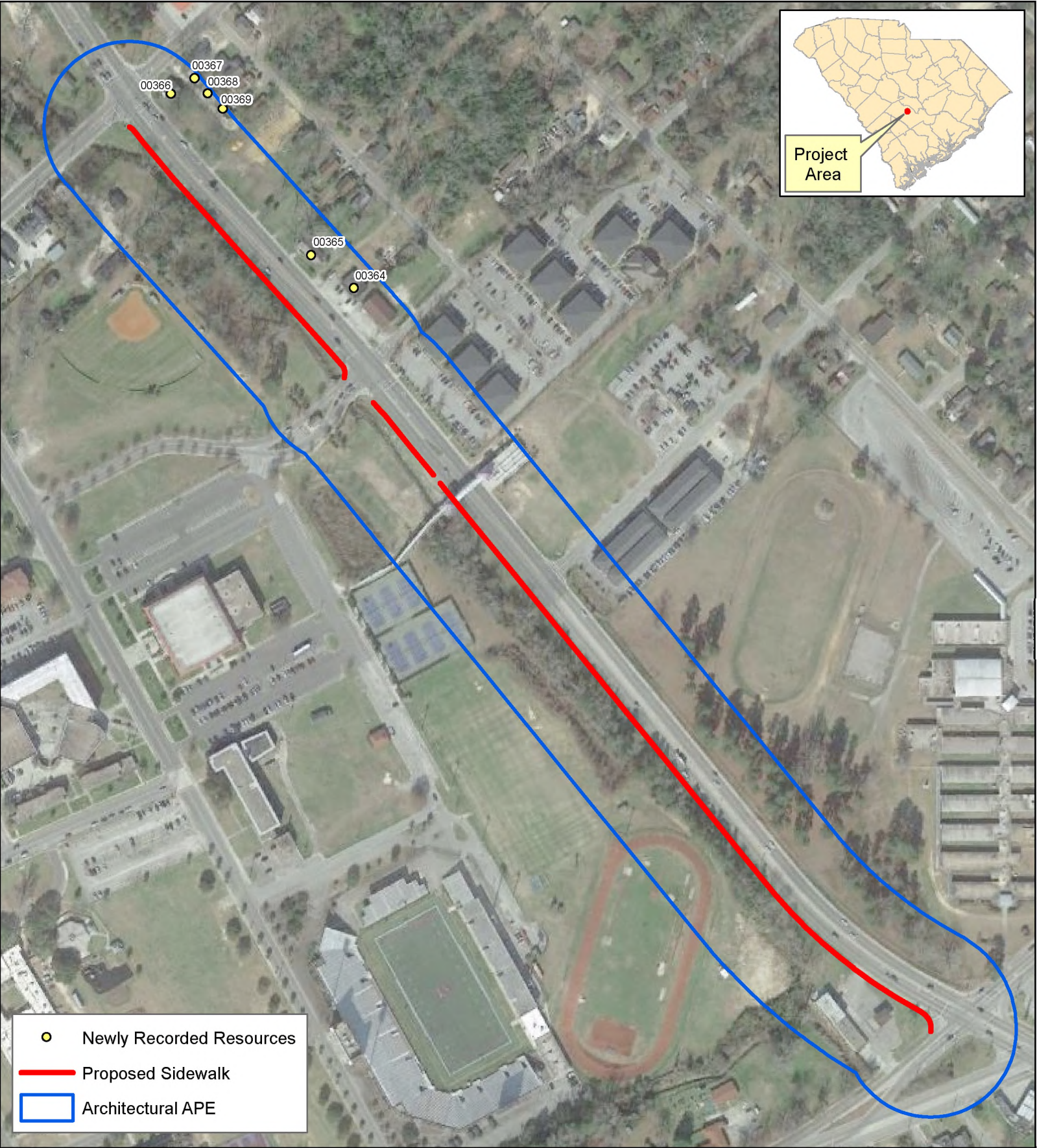
Effect Determination:

*SHPO consultation is required for all Type 3 projects and any project with a No Adverse or Adverse Effect Determination.

This screening form was developed to satisfy documentation requirements for Type I and Type II projects under a Programmatic Agreement between the Federal Highway Administration, the South Carolina State Historic Preservation Office, the US Army Corps of Engineers, and the South Carolina Department of Transportation. For Type I and Type II projects that have no effect on historic properties, the completion of this screening form with supporting documentation (e.g. ArchSite Map) provides evidence of FHWA and SCDOT's compliance with Section 106 of the National Historic Preservation Act.

Prepared by:

Review Date:



Date:
October 4, 2019



US-21 and US-178
Corridor Improvements

Orangeburg
County

Project ID: P030267

