
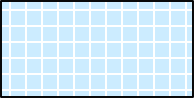
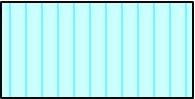



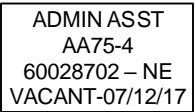
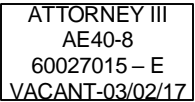



SOUTH CAROLINA
DEPARTMENT OF LABOR, LICENSING AND REGULATION
ORGANIZATIONAL CHART

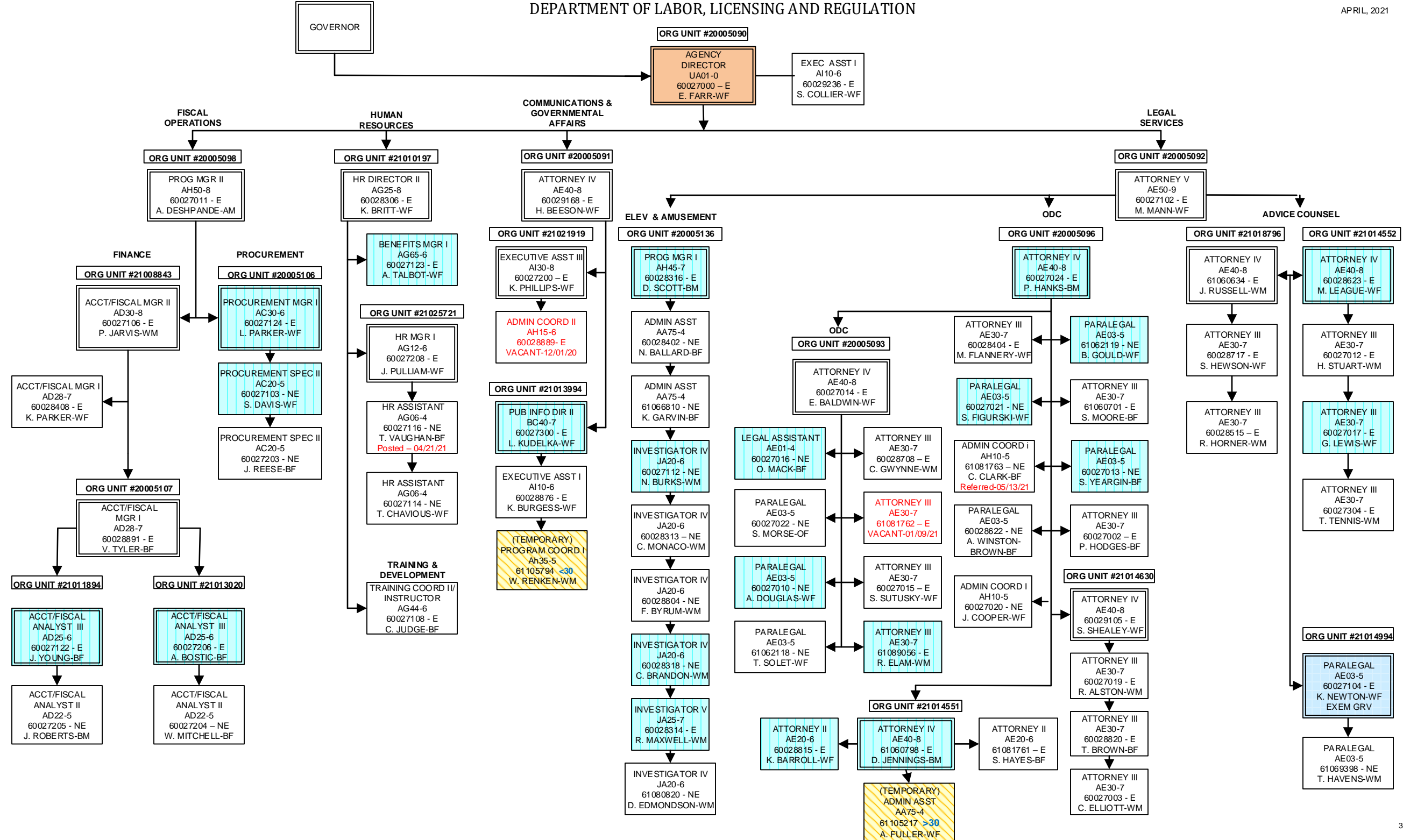
APRIL 2021

SOUTH CAROLINA
DEPARTMENT OF LABOR, LICENSING AND REGULATION
ORGANIZATIONAL CHARTS

Light Orange Square		Employee Exempt from Grievance
Light Blue Square		Employee returned after TERI or Retirement; Exempt Grv
Turquoise Vertical Stripe		Employee eligible to retire within 5 years by service or age
White Solid Red Letters		Vacant Position-Vacancy Date
Yellow Diagonal Stripe		Temporary Employee
Dark Pink Outline		Borrowed position
NE Designation		Non-exempt position
E Designation		Exempt position
Purple Diagonal Stripe		Two-Week Break

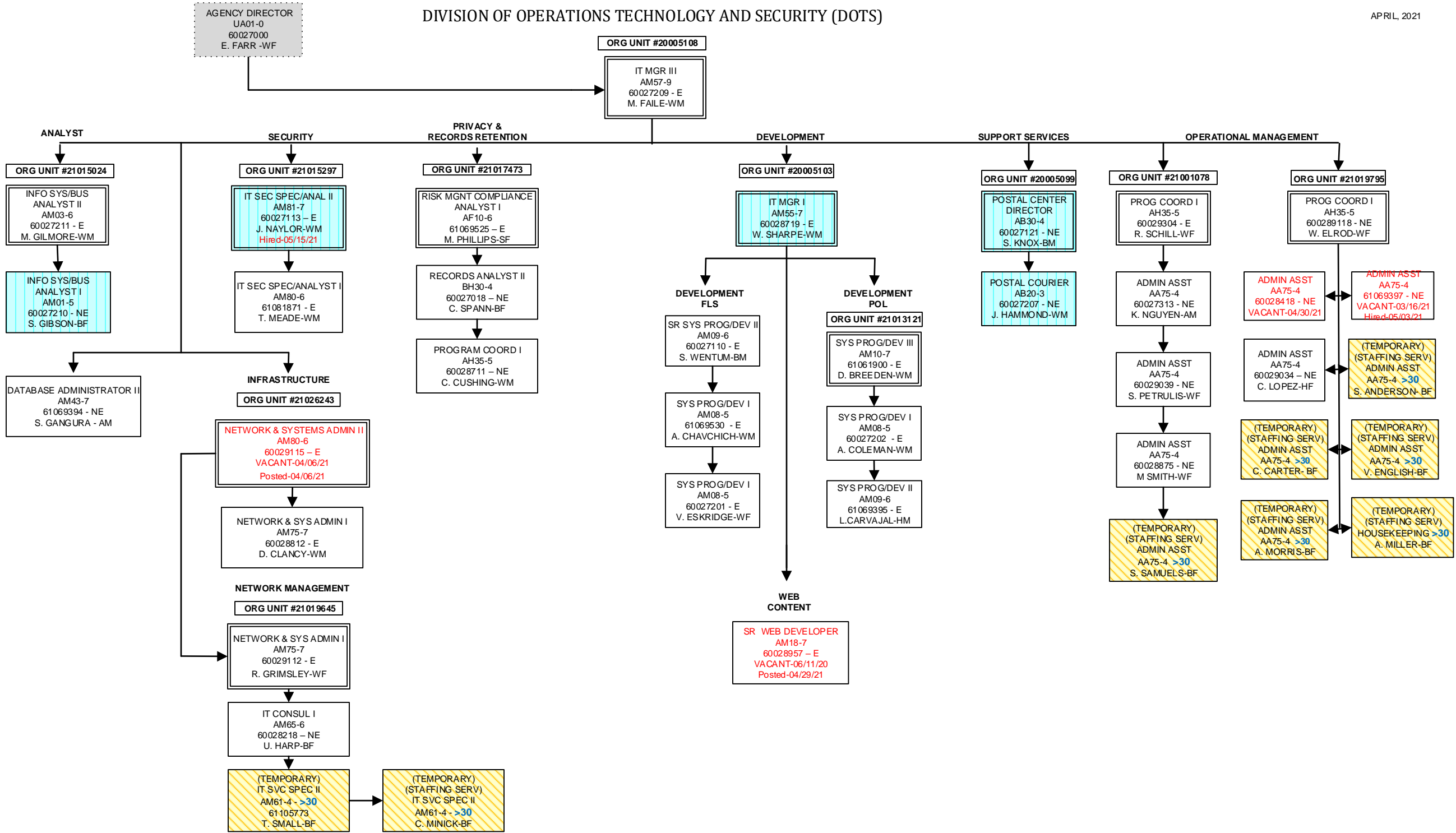
DEPARTMENT OF LABOR, LICENSING AND REGULATION

APRIL, 2021



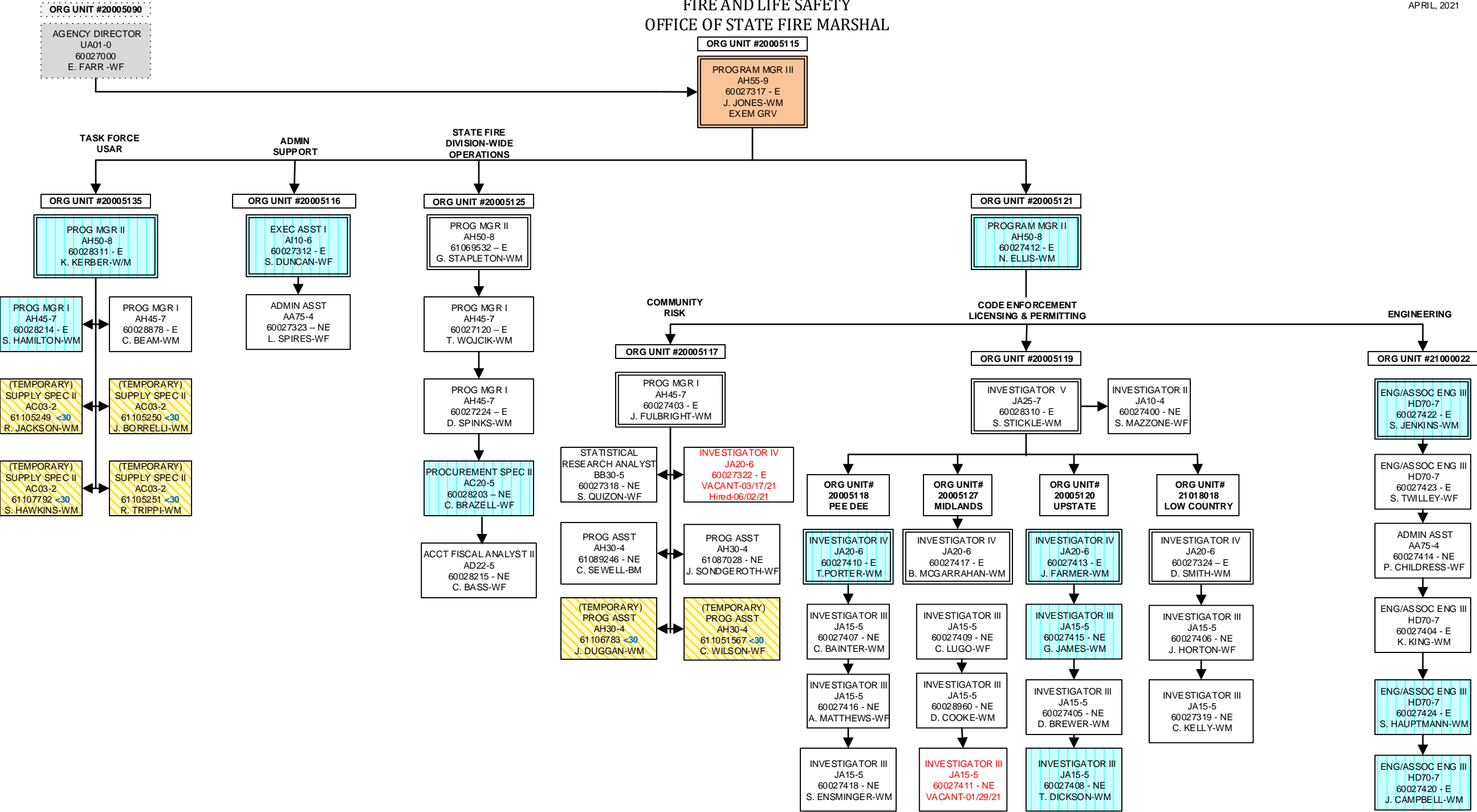
DIVISION OF OPERATIONS TECHNOLOGY AND SECURITY (DOTS)

APRIL, 2021



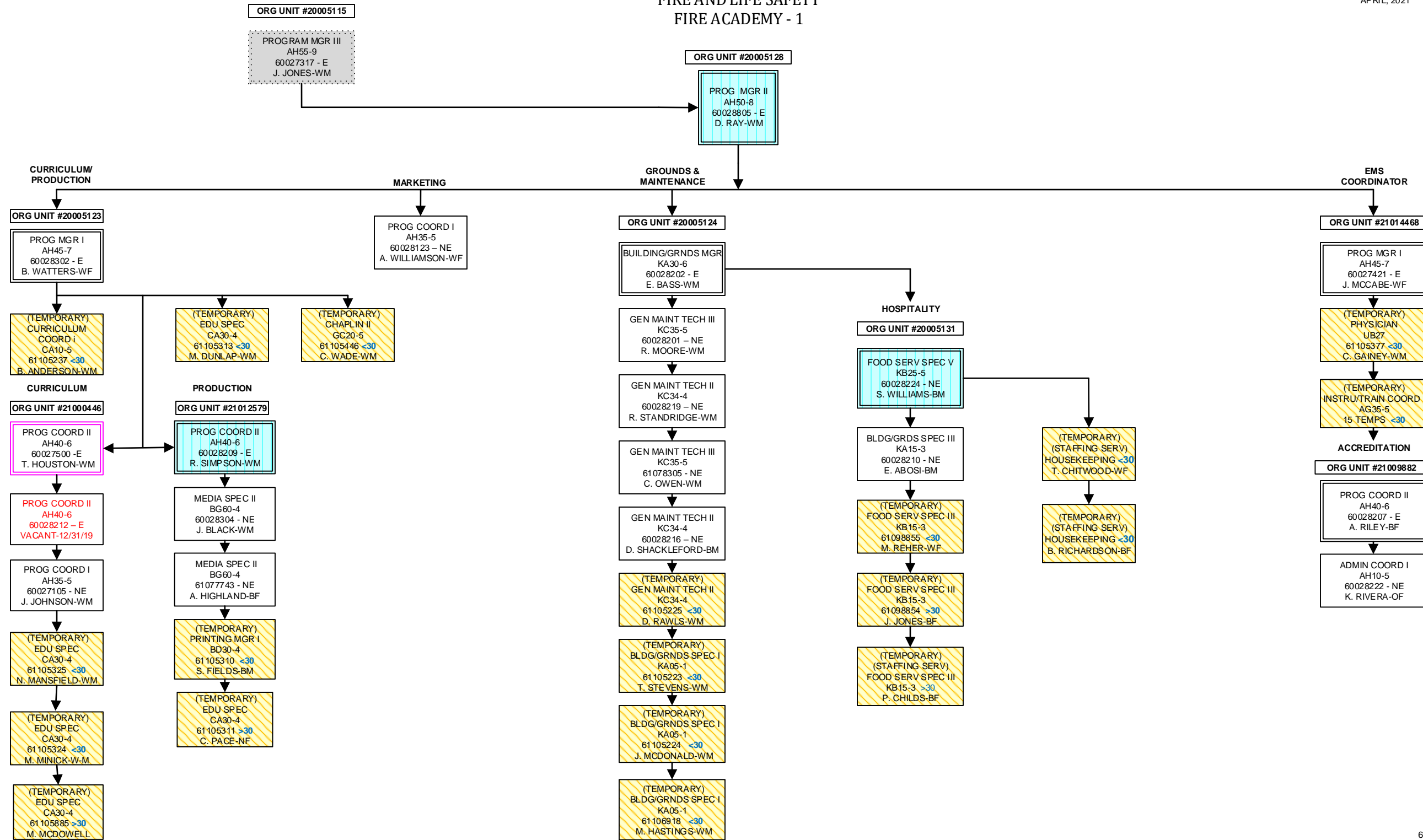
FIRE AND LIFE SAFETY
OFFICE OF STATE FIRE MARSHAL

APRIL, 2021



FIRE AND LIFE SAFETY
FIRE ACADEMY - 1

APRIL, 2021



FIRE AND LIFE SAFETY
FIRE ACADEMY -2

APRIL, 2021

ORG UNIT #20005115
PROGRAM MGR III
AH55-9
60027317 - E
J. JONES-WM

ORG UNIT #20005128
PROG MGR II
AH50-8
60028805 - E
D. RAY-WM

TRAINING/
INSTRUCTION
ORG UNIT #20005133

PROG MGR I
AH45-7
60028305 - E
T. BROWN-BM

ADMINISTRATION
ORG UNIT #20005122

ADMIN COORD I
AH10-5
60028217 - E
S. BUSH-BF

ADMIN ASST
AA75-4
60028303 - NE
O. STALEY-BF

ADMIN ASST
AA75-4
60028213 - NE
G. EVANS-BF

ADMIN ASST
AA75-4
60028211 - NE
VACANT-01/27/21
Hired-05/03/21

REGIONAL
ORG UNIT #20005126

PROG COORD II
AH40-6
60028204 - E
E. ADAMS-WM

ORG UNIT #20005129
REGION 1 GREENVILLE

PROG COORD I
AH35-5
60028221 - E
D. DUNCAN-WM

(TEMPORARY)
ADMIN ASST
AA75-4
61105213 - NE <30
L. WILLINGHAM-WF

(TEMPORARY)
FSO I
JC60-4
21 TEMPS
FSO II
JC70-5
5 TEMPS

ORG UNIT #21011927
REGION 2 YORK CO.

PROG COORD I
AH35-5
60028122 - E
J. MCCARLEY-WM
EXEM GRV

(TEMPORARY)
ADMIN ASST
AA75-4
61105214 <30
G. CIBBARELLI-WF

(TEMPORARY)
FSO I
JC60-4
17 TEMPS
FSO II

ORG UNIT #20005132
REGION 3 FLORENCE

PROG COORD I
AH35-5
60028300 - E
E. JOYCE-WF

(TEMPORARY)
FSO I
JC60-4
20 TEMPS

(TEMPORARY)
EDU SPEC
CA30-4
61105670 <30
K. NIEUWENHUIS

ORG UNIT #21024097
REGION 4 HORRY

PROG COORD I
AH35-5
60028205 - E
E. FILYAW-WM

(TEMPORARY)
FSO I
JC60-4
9 TEMPS

ORG UNIT #21001228
REGION 5 CHARLESTON

PROG COORD I
AH35-5
60028121 - E
E. BOLEN-WM

(TEMPORARY)
ADMIN ASST
AA75-4
61105215 <30
E. BATES-WF

(TEMPORARY)
FSO I
JC60-4
14 TEMPS
FSO II
JC70-5
4 TEMPS

ORG UNIT #21011926
REGION 6 AIKEN

PROG COORD I
AH35-5
60028307 - E
M. TURNER-WF

(TEMPORARY)
ADMIN ASST
AA75-4
61105216 <30
L. WAY-WF

(TEMPORARY)
FSO I
JC60-4
11 TEMPS
FSO II
JC70-5
2 TEMPS

ORG UNIT #21024098
REGION 7 ANDERSON

PROG COORD I
AH35-5
60028220 - E
W. CRAFT-WM

(TEMPORARY)
FSO I
JC60-4
14 TEMPS
FSO II
JC70-5
1 TEMP

SPECIAL OPERATIONS
ORG UNIT #21024393

PROG COORD II
AH40-6
60028206 - E
J. HEADRICK-WM

(TEMPORARY)
FSO II
JC70-4
9 TEMPS
FSO III
JC80-5
2 TEMPS

RESIDENT
ORG UNIT #20005130

PROG COORD II
AH40-6
60028223 - E
K. WATSON-BF

PROG COORD I
AH35-5
60028301 - NE
C. BECKHAM-WM

PROG COORD I
AH35-5
60028200 - NE
C. MILES-WM

PROG COORD I
AH35-5
60028208 - NE
VACANT-12/01/19
Hired-06/17/21

PROG COORD I
AH35-5
60028124 - NE
VACANT-09/18/20
Referred-05/13/21

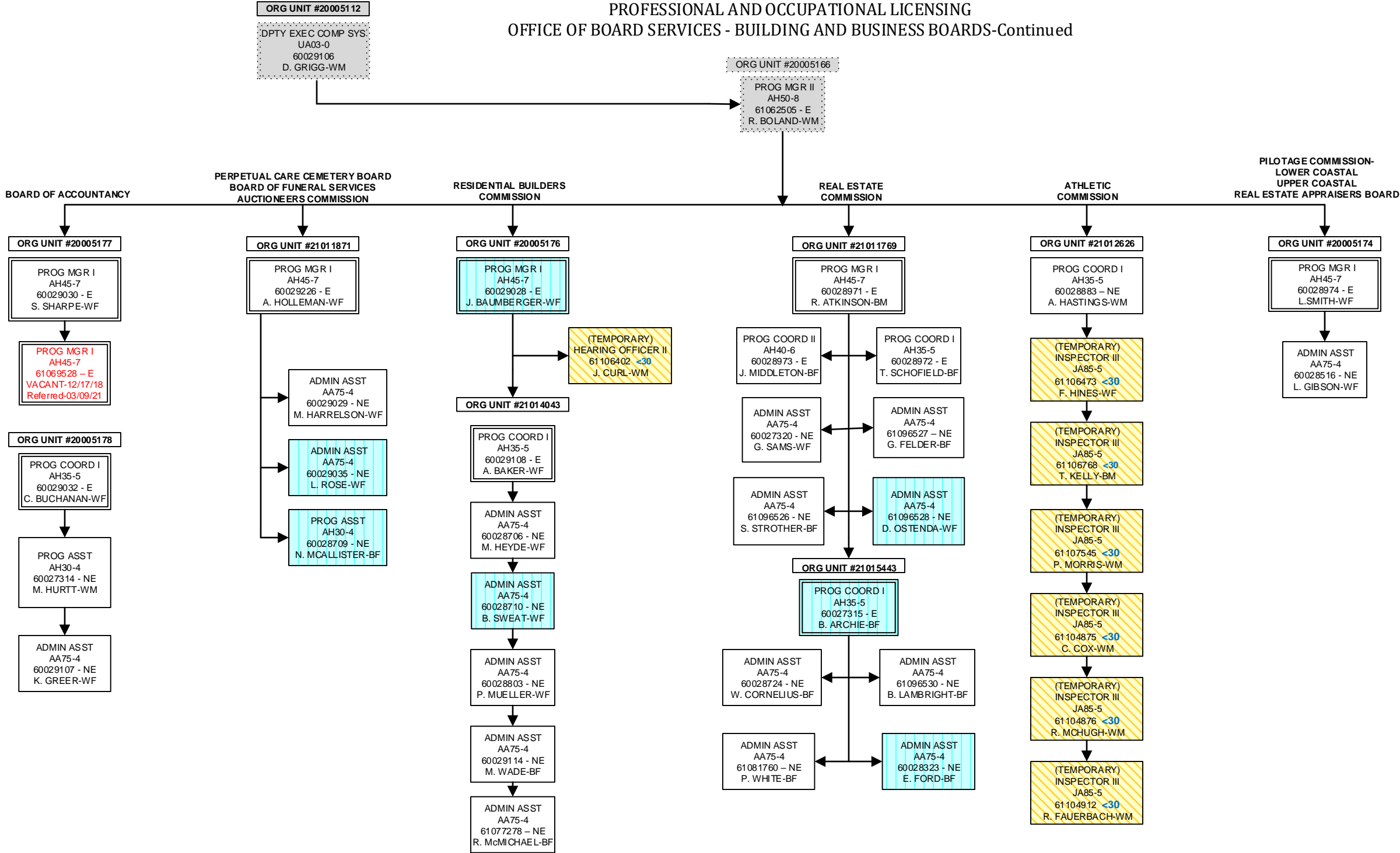
PROG COORD I
AH35-5
60028952 - NE
VACANT-10/02/20
Referred-05/13/21

(TEMPORARY)
EQUIP OPER III
KD45-3
6115208 <30
J. WHITE-WM

(TEMPORARY)
FSO I
JC60-4
17 TEMPS
FSO II
JC70-5
4 TEMPS

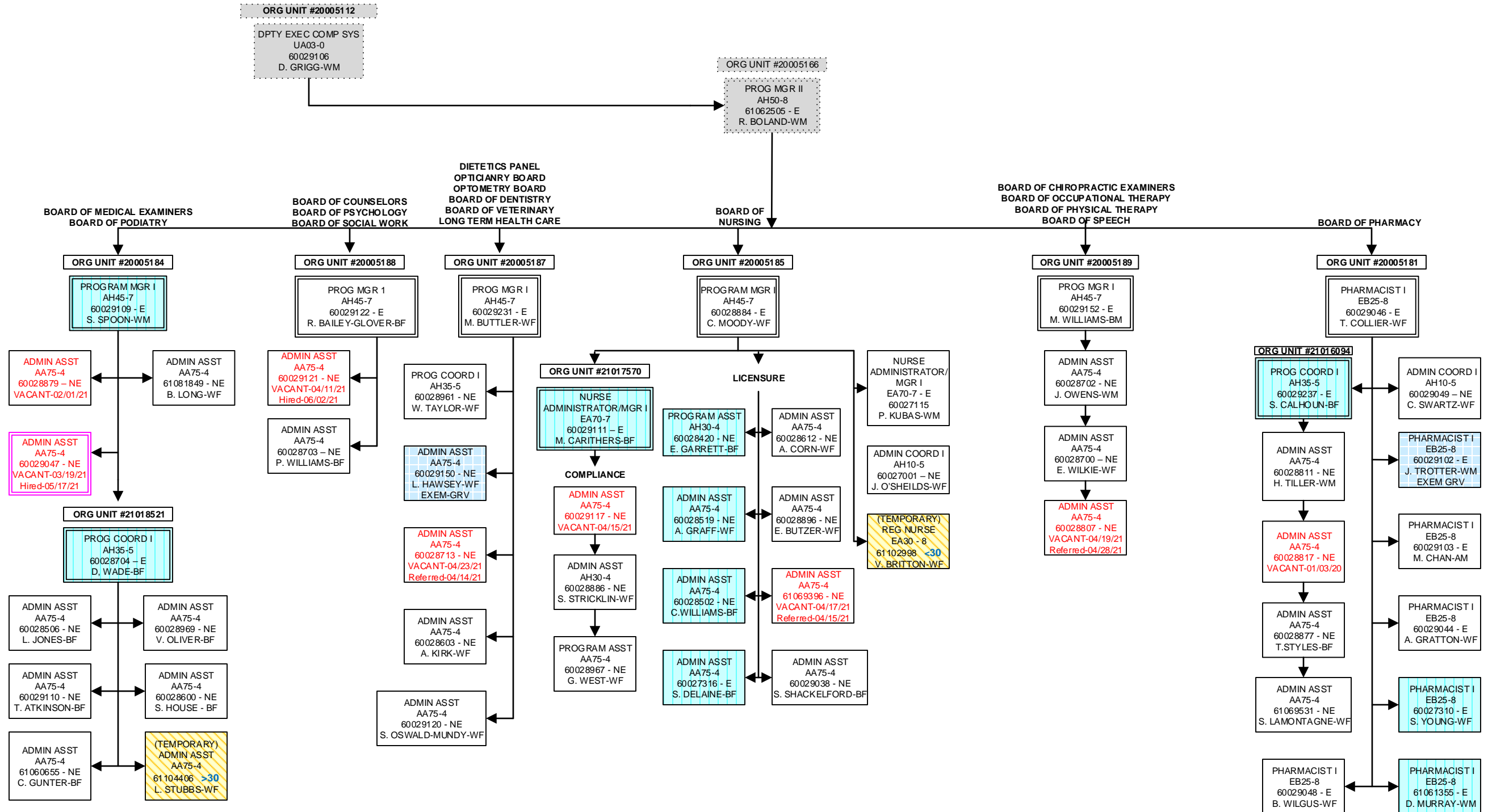


PROFESSIONAL AND OCCUPATIONAL LICENSING
OFFICE OF BOARD SERVICES - BUILDING AND BUSINESS BOARDS-Continued



OFFICE OF BOARD SERVICES
HEALTH AND MEDICALLY RELATED BOARDS

APRIL, 2021



OFFICE OF INVESTIGATIONS AND ENFORCEMENT

