

Identification and Documentation of the Oswalt Family Cemetery (Historic Resource 0980) Allora Solar, LLC Tract Lexington County, South Carolina

by

Dawn Reid
Archaeological Consultants of the Carolinas, Inc.
December 5, 2018

The proposed Allora solar facility tract is located south of the community of Gilbert, in Lexington County, South Carolina (Figure 1). During the project's planning stage, one of the landowners raised the issue of a cemetery being located on the property. No cemetery was reflected on project maps, nor had one been previously recorded in the project tract. Archaeological Consultants of the Carolinas, Inc. (ACC) was contracted to locate, map, and document this cemetery.

Oswalt Cemetery (Historic Resource 0980)

The Oswalt family cemetery (historic resource 0980) was identified in a clear-cut area approximately 0.27 kilometers (0.17 miles) due south from the intersection of Two Notch and AC Bouknight roads (Figure 2). Based on aerial photographs of the project area, the clear-cutting took place in 2012, at which time the cemetery was avoided. It is presently surrounded by a sparse buffer of tall pines (Figure 3). Saplings have grown up across the cemetery area (Figure 4).

The cemetery itself is bounded by a concrete block wall that is in severe disrepair. Two concrete block columns flank and entrance that faces west towards AC Bouknight Road (Figure 5). A concrete slab engraved with "1948", likely indicating the date the block wall was constructed, sits beside the southern column. Although not reflected on early twentieth century maps of the area, aerial imagery shows vegetation variations that may indicate a dirt road or path leading from AC Bouknight Road directly to the cemetery entrance. There are a total of 11 graves within the 50 by 25 foot enclosure (Figure 6). Seven of the graves have inscribed marble or granite headstones and footstones (Figure 7). Two have only inscribed granite headstones with no footstones. Two graves have fieldstones as both head- and footstones (Figure 8). The stone inscriptions are transcribed in Table 1.

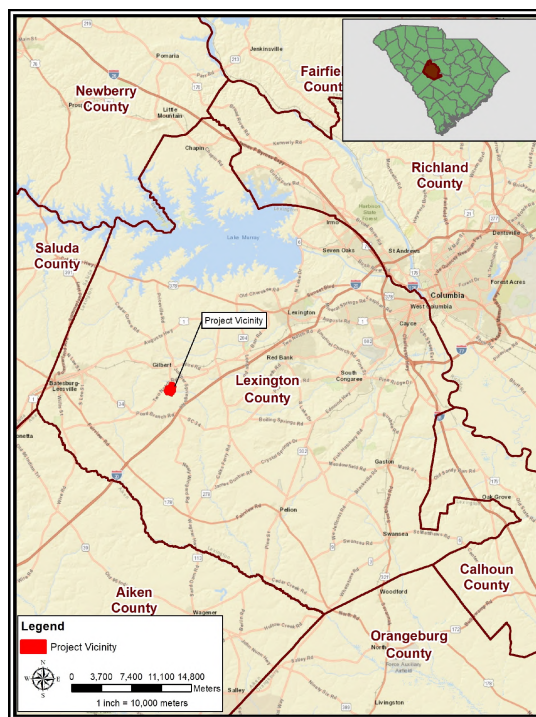


Figure 1. Map showing location of project area.



Oswalt Family Cemetery
Lexington, South Carolina

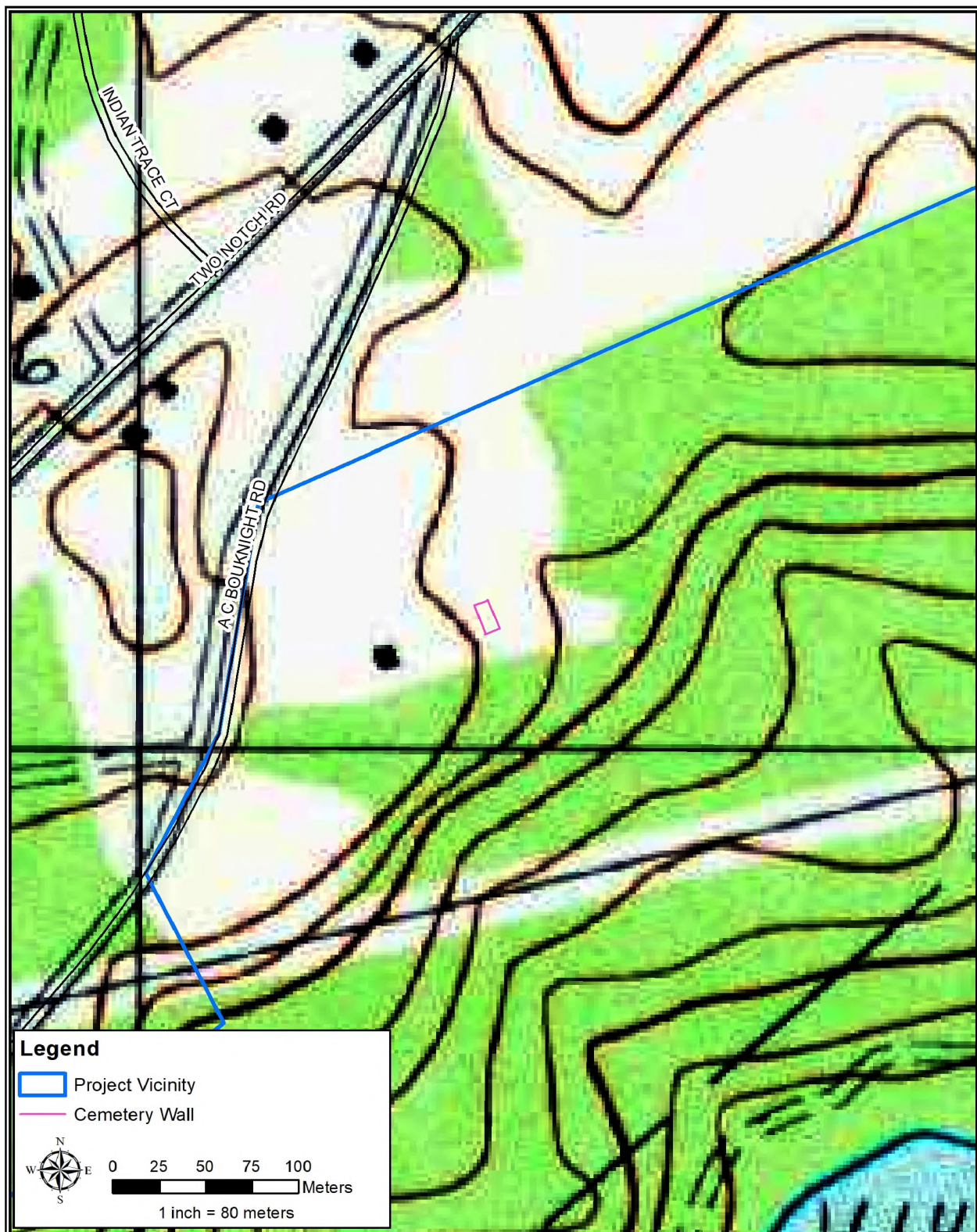


Figure 2. Map showing the location of the Oswalt cemetery (1986 *Gilbert, SC* USGS 7.5 minute topographic quadrangle).



Oswalt Family Cemetery
Lexington, South Carolina



Figure 3. Aerial map showing location of the Oswalt cemetery in stand of trees in clear-cut area.



Oswalt Family Cemetery
Lexington, South Carolina



Figure 4. General view of cemetery area, looking northwest.



Figure 5. View of columned cemetery entrance, looking west.

The patriarch of the family, James Edward (JE) Oswalt was a white farmer based on early twentieth century census data. Julia Oswalt was his mother and Reba Decia Oswalt was his wife. Bessie Clamp (nee Oswalt) was the daughter of James Edward and Reba Decia Oswalt. Julia Estelle Clamp was Bessie's daughter. The Clamp and Oswalt families were neighbors, all of whom were corn and cotton farmers. Members of the Oswalt family owned the property until 2006, at which time Oswalt [sic] Wholesale Lumber, Inc. sold the property. Oswalt Wholesale Lumber, Inc. acquired the property from Johnnie W. and Linda H. Oswalt, who acquired it from Jimmy Edward Oswalt, a direct descendent of James Edward Oswalt. Census data begins to reflect the modified spelling as of 1910.

A South Carolina Archaeological Site Form and Survey of Historic Properties Form have been submitted for this cemetery. Although it does not meet National Register of Historic Places (NRHP) criteria as a significant archaeological resource, more archival research into the Oswalt family and their potential contributions to the development of the project area will be necessary to determine if the cemetery meets other NRHP eligibility criteria. In the meantime, this cemetery remains unevaluated in regards to its NRHP eligibility status. Any disturbance to this cemetery should be avoided during the construction and operation of the proposed solar energy facility. It is recommended that a 25 foot buffer around the cemetery be established and fenced to insure that it is not adversely impacted.



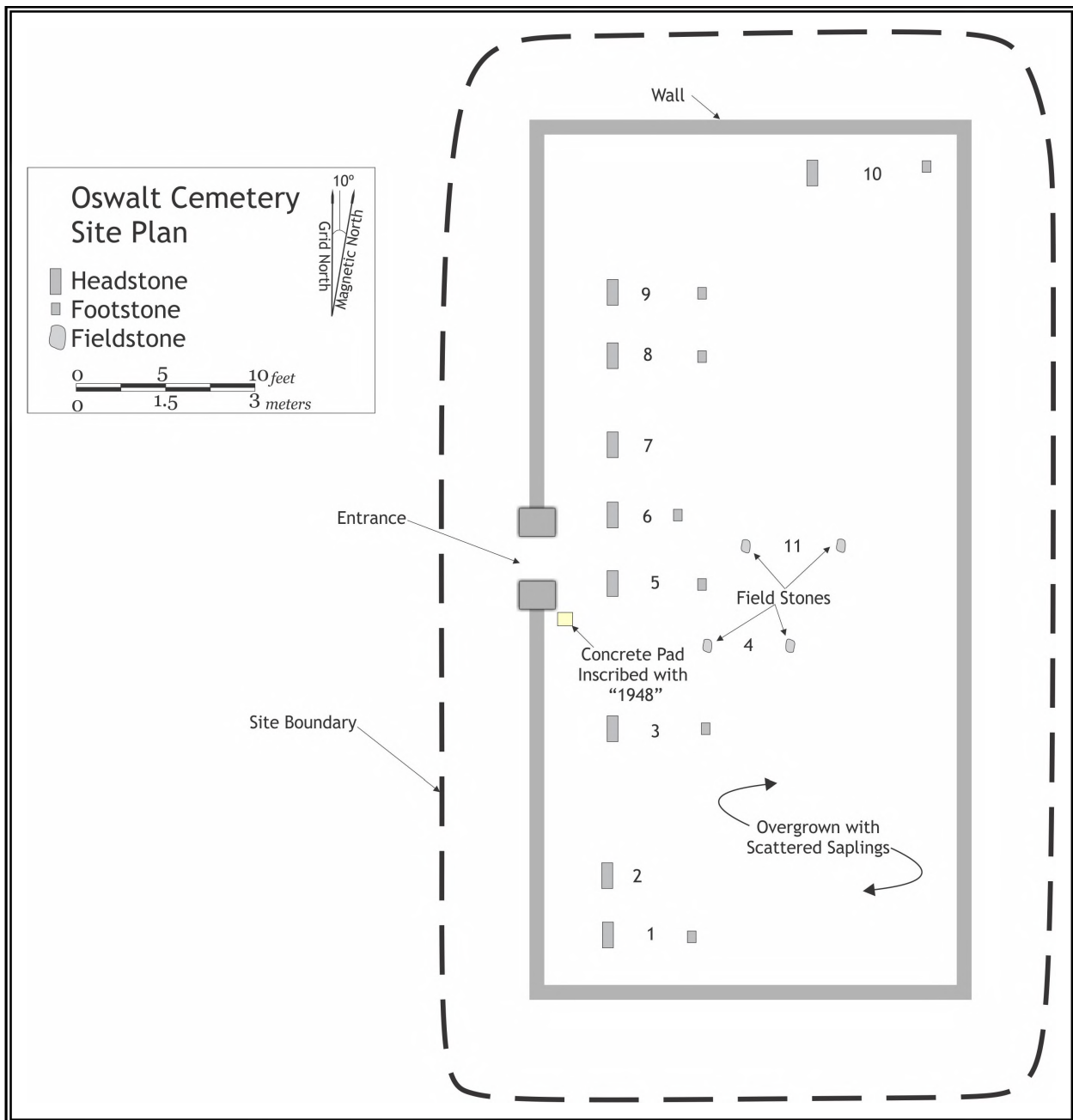


Figure 6. Plan map of Oswalt cemetery.





Figure 7. Example of head- and foot stones in the Oswalt cemetery, looking west.



Figure 8. Example of fieldstone markers in the Oswalt cemetery, looking west.

References Cited

United States Geological Service (USGS)
1986 *Gilbert, SC 7.5 minute topographic quadrangle.*



Oswalt Family Cemetery
Lexington, South Carolina

Table 1. Head- and Footstone Inscriptions*.

1	Julia Estelle Clamp Oct 16 1910 Aug 26 1922	2	In Memory of Bessie Clamp June 12 1886 May 13 1931
3	Wade D. Son of JE & RC Oswalt Born Dec 3 1890 Died Dec 21 1901	5	Kattie Daughter of JE & RC Oswalt Born April 27 1882 Died April ----- (illegible)
6	Infant Daughter of JE & RC Oswalt Asleep From earth to Heaven	7	Infant daughter of JE & RC Oswalt From earth to Heaven
8	James Edward Oswalt Jan 23 1856 Feb 22 1932	9	Reba Decia Oswalt July 12 1867 April 29 1951
10	Julia Oswalt Born May 28 1829 Died May 23 1912 Gods Finger touched her and she slept She shall awake on the ressurection morn		

*Grave Numbers correspond to Cemetery Map (Figure 6)

