

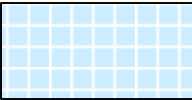
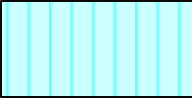



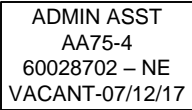
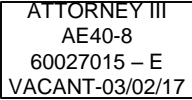


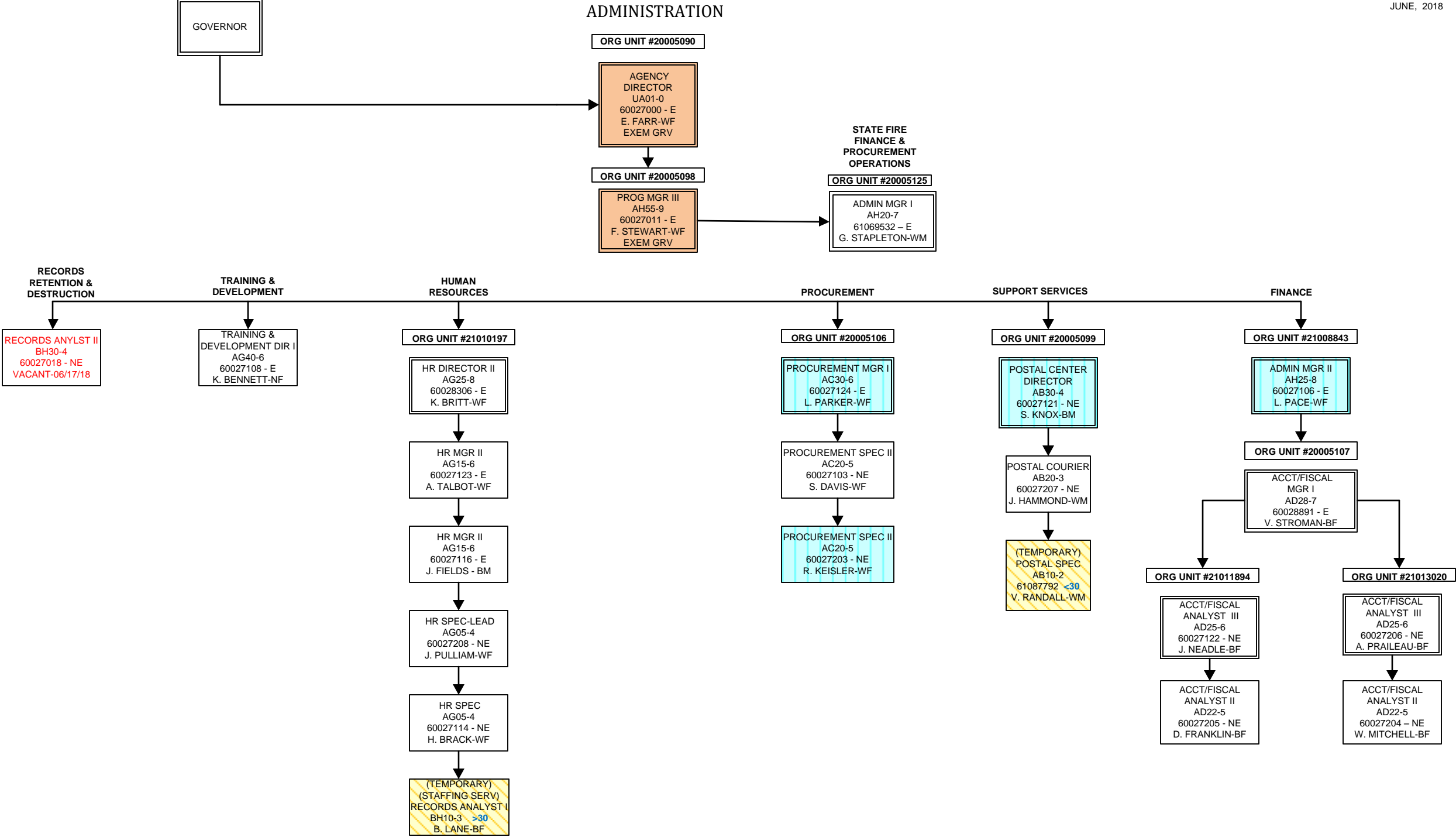
SOUTH CAROLINA  
DEPARTMENT OF LABOR, LICENSING AND REGULATION  
ORGANIZATIONAL CHART

JUNE 2018

**SOUTH CAROLINA  
DEPARTMENT OF LABOR, LICENSING AND REGULATION  
ORGANIZATIONAL CHARTS**

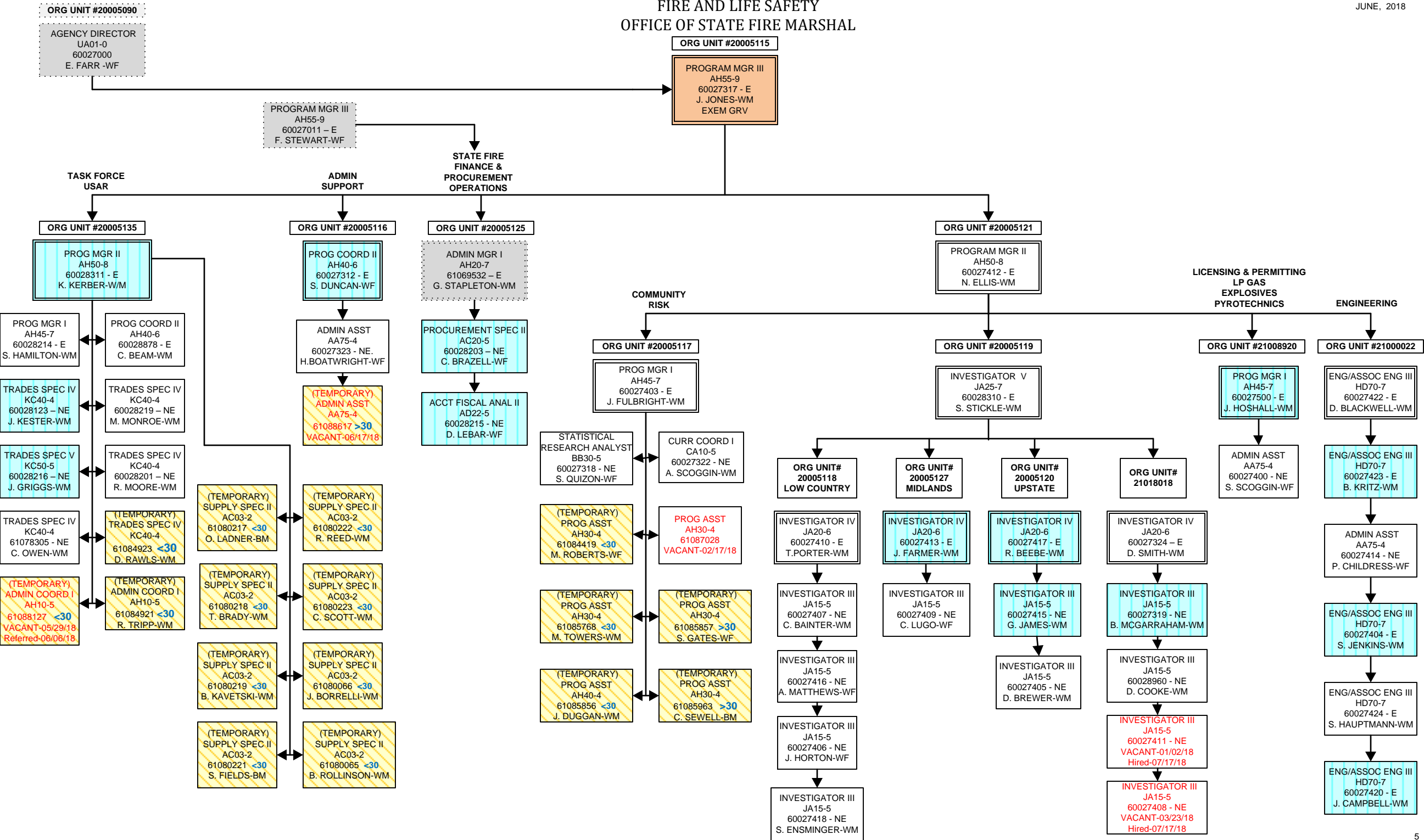
Light Orange Square		<b>Employee Exempt from Grievance</b>
Pink Diamond		<b>TERI Employee</b>
Light Blue Square		<b>Employee returned after TERI or Retirement; Exempt Grv</b>
Turquoise Vertical Stripe		<b>Employee eligible to retire within 5 years by service or age</b>
White Solid Red Letters		<b>Vacant Position-Vacancy Date</b>
Yellow Diagonal Stripe		<b>Temporary Employee</b>
Dark Pink Outline		<b>Borrowed position</b>
NE Designation		<b>Non-exempt position</b>
E Designation		<b>Exempt position</b>





FIRE AND LIFE SAFETY  
OFFICE OF STATE FIRE MARSHAL

JUNE, 2018



FIRE AND LIFE SAFETY  
FIRE ACADEMY

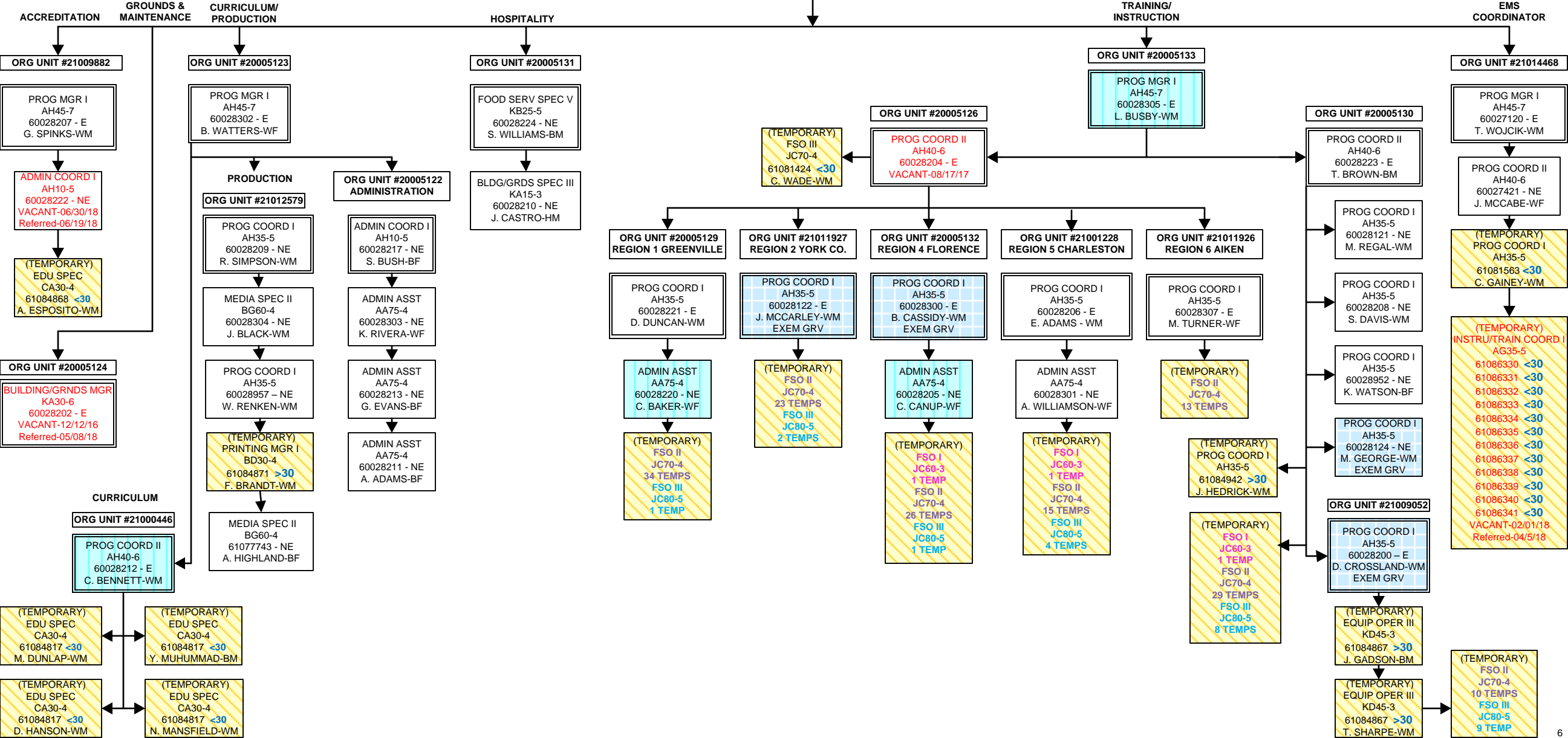
JUNE, 2018

ORG UNIT #20005115

PROGRAM MGR III  
AH55-9  
60027317 - E  
J. JONES-WM

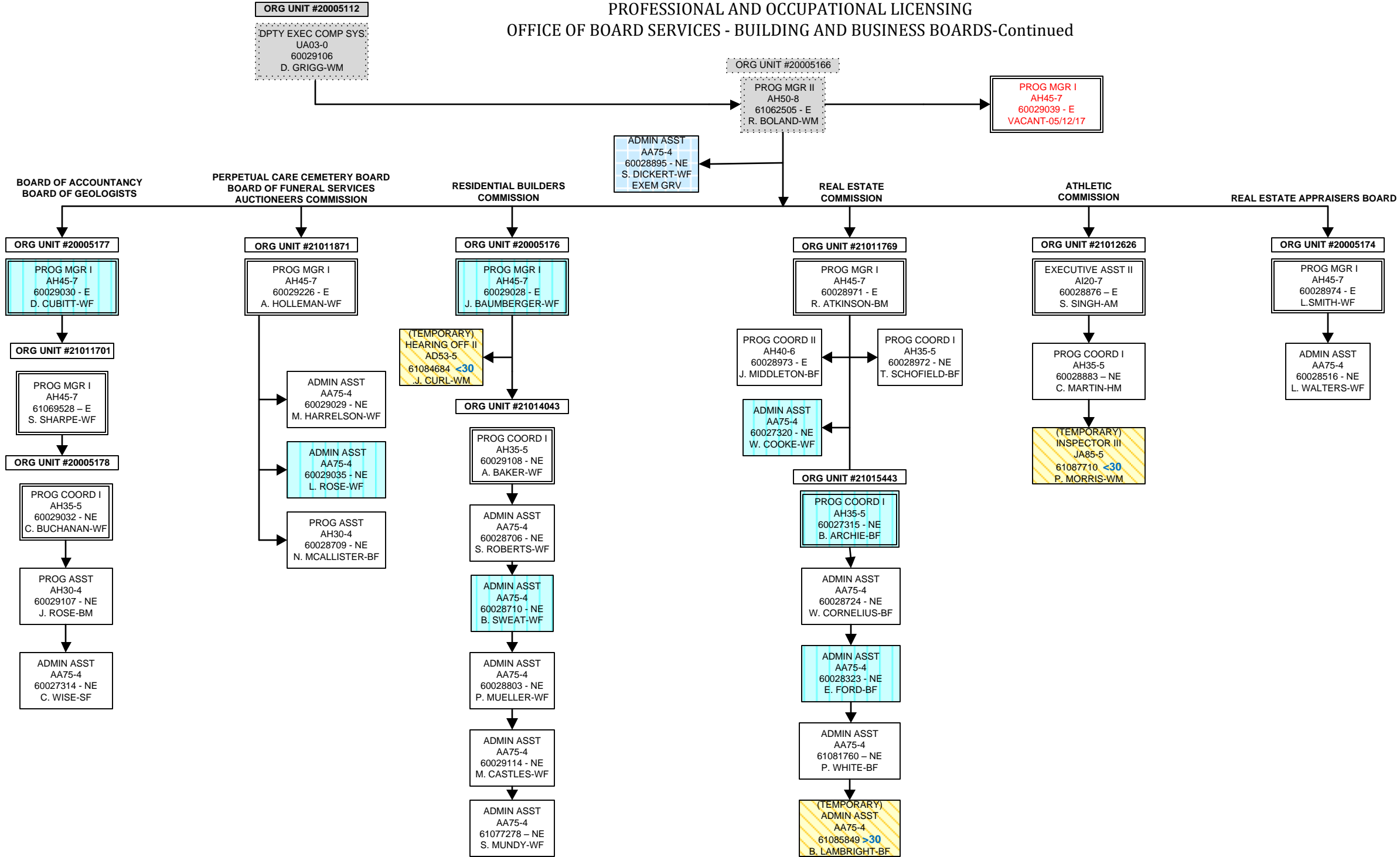
ORG UNIT #20005128

PROG MGR II  
AH50-8  
60028805 - E  
D. RAY-WM



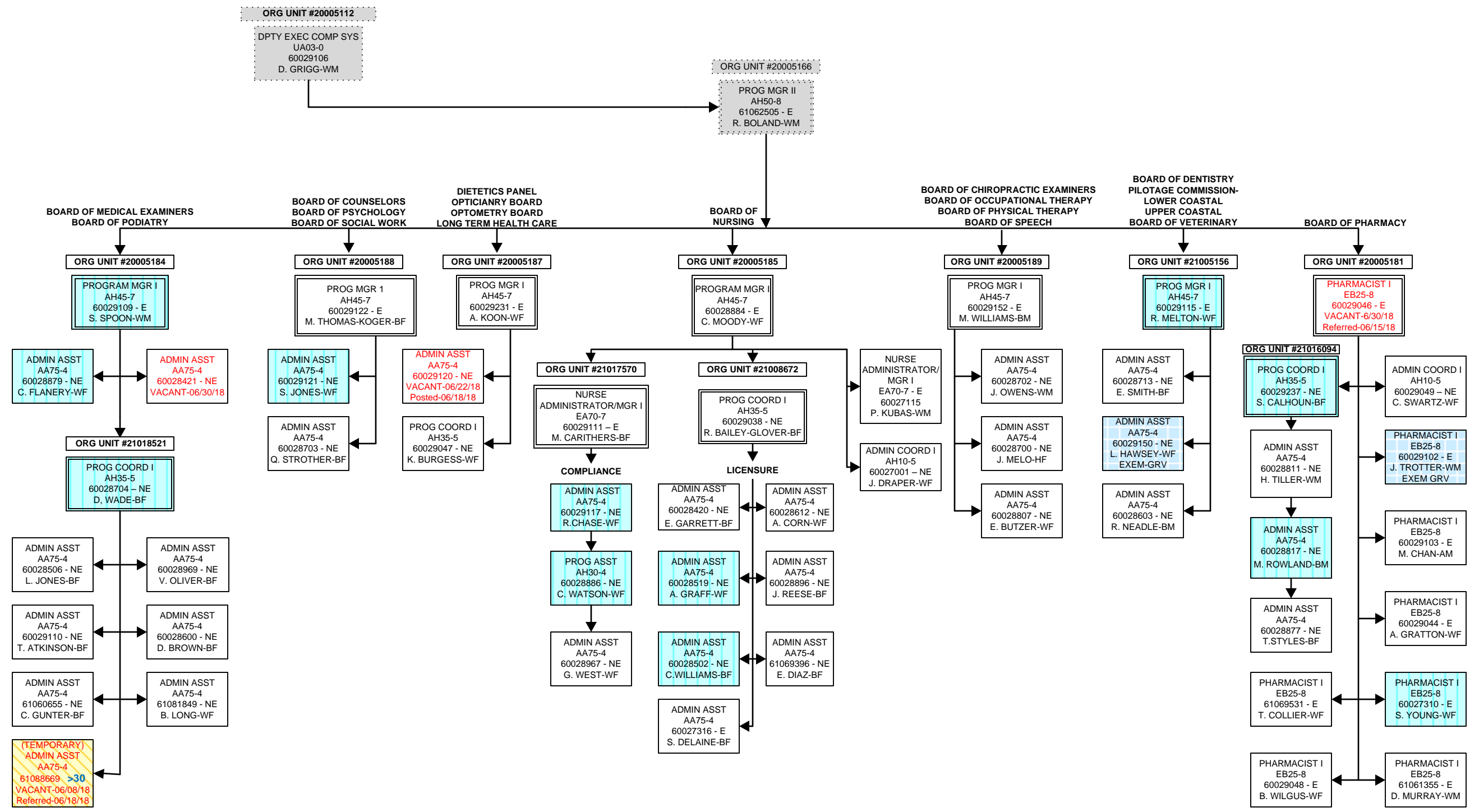


PROFESSIONAL AND OCCUPATIONAL LICENSING  
OFFICE OF BOARD SERVICES - BUILDING AND BUSINESS BOARDS-Continued

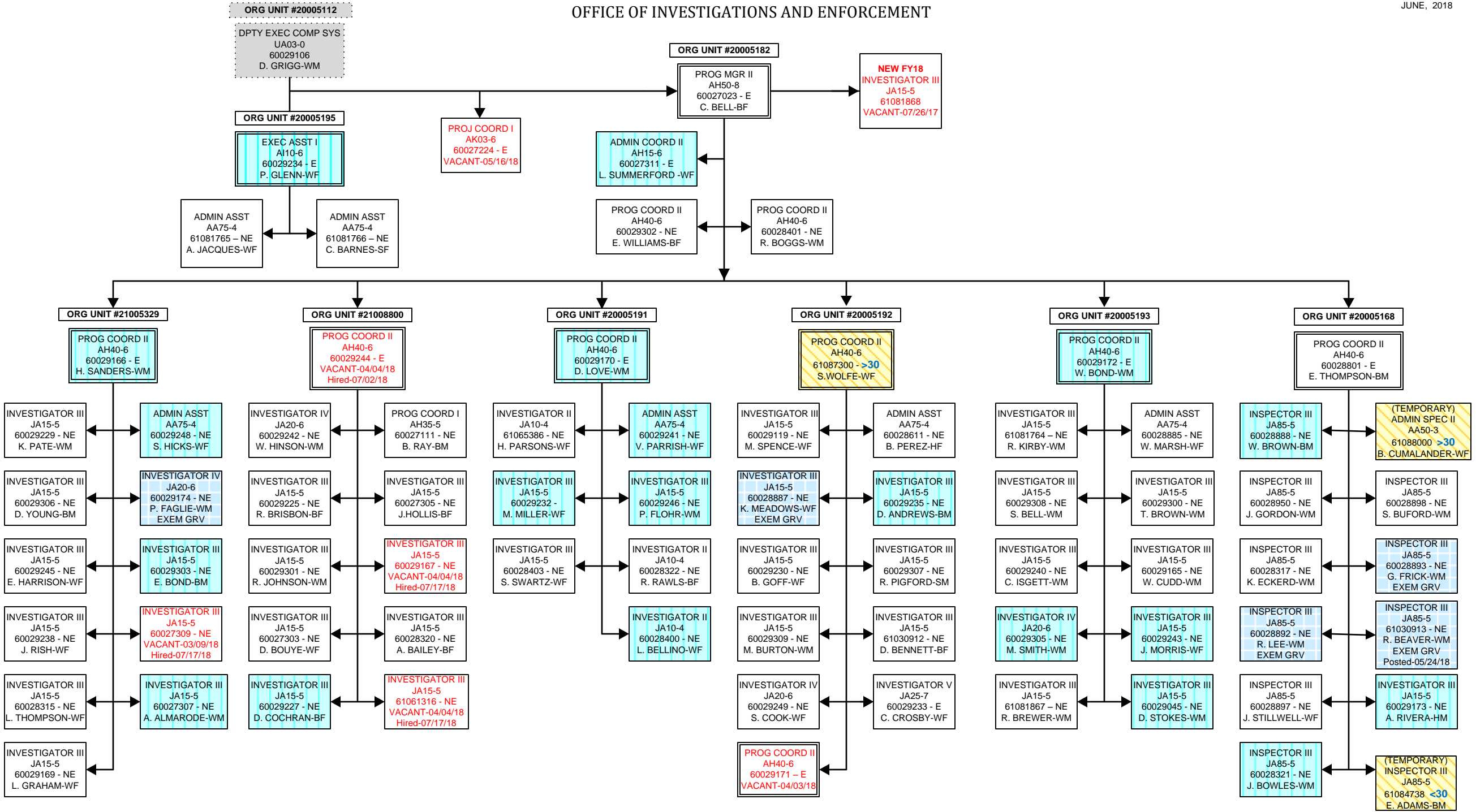




OFFICE OF BOARD SERVICES  
HEALTH AND MEDICALLY RELATED BOARDS



OFFICE OF INVESTIGATIONS AND ENFORCEMENT



DIVISION OF LABOR  
OSHA-COMPLIANCE

JUNE, 2018

