

Title: **Haley pushes for hiring nonviolent S.C. prisoners upon release**
 Author:
 Size: 15.19 column inches
 Myrtle Beach, SC Circulation: 61238



Haley pushes for hiring nonviolent S.C. prisoners upon release

COLUMBIA

Gov. Nikki Haley urged businesses Monday to hire nonviolent prisoners near release, a step she said would give them a good start toward a second chance.

"My goal is not to just give them that bus ticket

and go out there and try and find the job," she said. "I want us to find them a job before they leave the fence. I believe in these inmates that we're talking about."

The heads of several state agencies joined Haley to pitch the effort to expand an effort under way since 2014.

She is hoping to take the program a step further by

having prisoners get hired before they are released so that they have a place to go immediately.

The program teams up state corrections, employment and probation officials to prepare nonviolent prisoners with a clean disciplinary record for work.

— THE (COLUMBIA) STATE

“

I WANT US TO FIND THEM A JOB BEFORE THEY LEAVE THE FENCE. I BELIEVE IN THESE INMATES THAT WE'RE TALKING ABOUT.

S.C. Gov. Nikki Haley

Title: **State facing largest evacuation in 17 years**
 Author: BY BRUCE MILLS bruce@theitem.com
 Size: 102.92 column inches
 Sumter, SC Circulation: 19018



State facing largest evacuation in 17 years

I-26 eastbound was reversed for first time

BY BRUCE MILLS

bruce@theitem.com

The projected path of Hurricane Matthew changed Wednesday, shifting farther off the coast of South Carolina; but Gov. Nikki Haley and leaders are still taking every precautionary measure — starting the state's largest evacuation in at least 17 years.

Haley initiated the evacuation plan on Wednesday as hundreds of thousands of people began making their way inland from Hilton Head Island, Beaufort and Charleston to avoid the hurricane. The governor's order covers all of Beaufort County and most of Charleston and Jasper counties. Low-lying parts of Berkeley, Dorchester and Colleton counties were also included in the evacuation.

The change in the projected forecast also showed the hur-

ricane moving at a slower pace, not affecting the coastal areas until Saturday morning. With the change, Haley did delay evacuations for Georgetown and Horry counties until today at noon.

"Because the storm changed, we are changing with the storm," Haley said.

State Highway Patrol troopers turned the eastbound lanes of Interstate 26 from Charleston to Columbia, a 100-mile stretch, into inland evacuation lanes for the first time. The plan was put into place after evacuations during Hurricane Floyd in 1999 turned a typical trip of less than two hours from Charleston to Columbia into an up-to-24-hour ordeal.

In a Wednesday night news conference, Haley complimented the state Department of Public Safety, Department

of Transportation, local law enforcement and others on the lane-reversal process.

"Traffic is moving beautifully and looking good," Haley said.

S.C. DOT Secretary Christy Hall said the lane reversals will remain in effect until Friday morning, and then state officials will revisit the issue as the storm progresses.

The latest storm track puts the storm farther off the South Carolina coast but not

far enough out to ease concerns of hurricane-force winds on shore and storm surges from 5 to 8 feet.

"While the strength of Matthew will fluctuate as it approaches the U.S. coast late this week, it will remain a

SEE **EVACUATION**, PAGE A5

EVACUATION FROM PAGE A1

powerful and dangerous hurricane with threats from storm surge, flooding and high winds," according to AccuWeather hurricane expert Dan Kotlowski.

South Carolina no longer has voluntary or mandatory evacuations, and officials can't order anyone to leave.

Haley, however, thanked residents for starting to evacuate and reiterated her plea for residents of coastal communities to abide by the state's evacuation plans.

"If you do not leave, you are putting a law enforcement officer or National Guardsman's life on the line when they have to go back and get you," she said.

The governor said most hotels in the state are booked, but rooms are still available in the Greenville area. She suggested people use online booking sites to find rooms if they have not made other preparations.

For shelter and evacuation information, people are advised to go to the state Emergency Management Division website at www.scecmd.org.

LOCAL FORECAST

Meteorologist Hunter Coleman of the National Weather Service in Columbia said Wednesday afternoon that the latest forecast track from the National Hurricane Center has the storm within 50 to 100 miles of the state's coast on Saturday morning. On Tuesday, forecasts had the storm reaching within 20 to 30 miles of the coast by Friday afternoon.

With the change in the forecast mod-

Title: **State facing largest evacuation in 17 years**
 Author: BY BRUCE MILLS bruce@theitem.com
 Size: 102.92 column inches
 Sumter, SC Circulation: 19018

els, Coleman said the tri-county area can expect 2 to 4 inches of rain between Friday night and Saturday evening, and the peak of the strongest sustained winds will be in the 20 to 35 mph range with some wind gusts as high as 45 mph. Tropical storm-level winds are defined as between 39 mph and 73 mph.

"The further east in the area, such as Clarendon County, we forecast rain in the 3 to 4 inch range," Hunter said Wednesday. "The further west, to include Sumter and western Lee coun-

ties, the forecast is for 2 to 2½ inches of rain."

Coleman said the likelihood of flooding in the three counties is now low because the rainfall will be over a length of time.

"Clarendon has some possibility for flooding," Coleman said. "And the closer to the coast you get, flooding becomes much more of a possibility. Similar to the rainfall levels, the strongest winds will be further east in eastern Clarendon County as opposed to Bishopville and Sumter County."

Coleman said with the forecasts, there is still uncertainty.

"Everything depends really on the track of Matthew and where it ends up going," Coleman said. "There is still some physical uncertainty there."

Similar to state leaders, Coleman emphasized preparations still need to be made, especially for the coastline.

For up-to-date information, visit www.theitem.com.

The Associated Press contributed to this story.



THE ASSOCIATED PRESS

South Carolina National Guard vehicles head east on U.S. Highway 378 Wednesday after leaving their headquarters near Columbia, South Carolina. Guard units are helping with traffic and other preparations for Hurricane Matthew.

Title: **State facing largest evacuation in 17 years**
 Author: BY BRUCE MILLS bruce@theitem.com
 Size: 102.92 column inches
 Sumter, SC Circulation: 19018



Andrew Esser boards up the glass doors Wednesday at the entrance of Sky King Fireworks in preparation for Hurricane Matthew in Cocoa, Fla.

THE ASSOCIATED PRESS



THE ASSOCIATED PRESS

Red Cross workers and residents walk Wednesday among the damage caused by Hurricane Matthew in Baracoa, Cuba. The hurricane rolled across the sparsely populated tip of Cuba overnight, destroying dozens of homes in Cuba's easternmost city, Baracoa, and leaving hundreds of others damaged.

Title: **State of emergency declared**
 Author: From staff reports
 Size: 79.67 column inches
 Florence, SC Circulation: 35092



HURRICANE MATTHEW

State of emergency declared

Gov. Haley closes schools; evacuation planned

From staff reports

FLORENCE — Florence School District One and other inland districts in the Pee Dee will be closed for the rest of this week by order of the governor in preparation for evacuations along the coast associated with

Hurricane Matthew.

As a result of the storm, all schools in Clarendon, Darlington, Dillon, Florence, Georgetown, Horry, Lee, Marion, Marlboro and Williamsburg will be

closed so they can be turned into shelters. Francis Marion University and Florence-Darlington

Technical College also will be closed.

All Wilson High School homecoming activities have been

See **MATTHEW**, Page 6

MORE INSIDE

» Closings, **Page 6A**

» Tips for preparation, **Page 6A**

FLORENCE COUNTY SHELTER LOCATIONS

» Hannah-Pamplico Elementary/Middle School, 2131 S.C. 51/S. Pamplico Highway, Pamplico, SC 29583
 » South Florence High School, 3200 S. Irby Street, Florence, SC 29505

» Timmonsville Educational Center, 304 Kemper St., Timmonsville, SC 29161

» Wilson High School, 1411 E. Old Marion Highway, Florence, SC 2906

» Lake City High School, 652 N. Matthews Road, Lake City, SC 29560

Matthew

From Page 1A

postponed.

South Carolina Gov. Nikki Haley issued a state of emergency Tuesday and said she plans to issue an evacuation order today ahead of Hurricane Matthew so that 1 million people can safely and comfortably leave the coast.

Haley said at a Tuesday news conference that she will finalize the order this morning, unless there is a major shift in the storm's track. Haley said she expects the evacuation to begin at 3 p.m. today.

State officials say lanes on major evacuation routes will be reversed.

It would be the first major evacuation since Hurricane Floyd in 1999, when Jim Hodges, the governor

at the time, didn't reverse the lanes, and Interstate 26 became backed up for hours and traffic was at a standstill. A two-hour drive from Charleston to Columbia turned into a 24-hour nightmare.

The state Climatology Office says a hurricane has not made landfall in South Carolina since Gaston moved ashore north of Charleston in August 2004. Matthew is forecast to hit the state as a Category 2 or 3 storm — the strongest since Hugo slammed into Charleston in 1989.

Five Florence County schools are designated evacuation shelters: South Florence, Wilson and Lake City high schools, Hannah-Pamplico Middle/Elementary School and the

Timmonsville Education Center, Florence County Emergency Management Division Director Dusty Owens said.

Florence County will have two responsibilities in the event of a coastal evacuation: shelter and traffic control.

"We've been in touch with the people who would run those shelters" to make sure they have the people and supplies in place to open and operate them, he said.

County and city law enforcement officers also would become responsible for the smooth movement of traffic along two coastal evacuation routes: U.S. 378 in southern Florence County and U.S.

301/76 through northern Florence County.

"This does not mean that Florence County citizens will need to evacuate," said Florence County EMD spokesman Andrew Golden. "However, shelters in Florence County will be opened for citizens evacuating from Horry and Georgetown counties. Once opened, these shelters are available for Florence County residents as well."

While along the coast there could be lane reversals to speed evacuation, this far inland there wouldn't be reversals, but there would be a law enforcement presence at key intersections to ease the movement of traffic.

The volume of traf-

Title: **State of emergency declared**
 Author: From staff reports
 Size: 79.67 column inches
 Florence, SC Circulation: 35092

fic would decrease as it state on a burn ban.

moves inland and evacuees opt for friends, family and hotels over shelters.

"It's a lot easier to have a hotel room rather than

share a gymnasium a lot of strangers," Owens said.

The shelters also lacking in creature comforts and should be considered only as a "last sort," he said.

In addition to the evacuation responsibilities, Owens said his agency will monitor Florence County power outages and stage a response to those in need.

In the wake of the storm, Owens said Florence County would become a staging area for any necessary relief heading toward the coast.

In addition to the school closings and evacuations, the South Carolina Department of Forestry Tuesday placed the

The Associated Press contributed to this report

STORM CLOSINGS

SCHOOLS

- » Coker College will hold classes through 3 p.m. today and then will be closed until Monday.
- » Darlington County schools will be closed for the remainder of the week, beginning today. All Darlington County School District offices will also be closed. All extracurricular activities and athletic events are canceled through Sunday.
- » Dillon County schools will be closed for the remainder of the week.
- » Florence County schools will be closed for the remainder of the week.
- » All Wilson High School homecoming events have been postponed.
- » Florence Darlington Technical College will be closed for the remainder of the week.
- » Francis Marion University will be closed for the remainder of the week.
- » Georgetown County schools will be closed for the remainder of the week.
- » Marion County schools will be closed for the remainder of the week.
- » Marlboro County schools will be closed for

the remainder of the week.

» Trinity-Byrnes Collegiate School in Darlington will be closed for the remainder of the week.

» Williamsburg County schools will be closed for the remainder of the week.

EVENTS

» The Charlie Wilson concert scheduled for Thursday has been postponed to Oct. 27 at the Florence Civic Center.

» The 4th Annual Downtown Florence Oktoberfest, originally scheduled for Saturday, has been rescheduled for Friday, Nov. 18.

BUSINESSES

» The Dispensary Grand Opening Celebration planned for Oct. 5 has been postponed. A new date has not yet been announced.

OTHERS

» The McLeod Total Joint Replacement Reunion at McLeod Plaza, originally scheduled for 11 a.m. Saturday, has been postponed. A new date has not been announced.

» The West Florence Fire Department Open House scheduled for Saturday has been postponed. A new date has not been announced.

as published

Title: **Lions, Cycs have games postponed**
 Author: BYTRAVIS JENKINS tjenkins@onlinechester.com
 Size: 106.79 column inches
 Chester, SC Circulation: 6700

Lions, Cycs have games postponed

Contests scheduled for tonight have been moved to November

BY TRAVIS JENKINS

tjenkins@onlinechester.com

Whether they wanted one or not, the football teams at Chester and Lewisville just got an extra week off.

With current weather projections showing Hurricane Matthew headed toward South Carolina and as much as 13 inches of rain expected to fall in some coastal areas, the South Carolina High School League moved Wednesday to extend the football season for one week, thus allowing extra time to make up games affected by the storm.

"All games (varsity and sub-varsity) originally scheduled for this week...that have been postponed due to evacuations and/or weather may be moved to the week of October 31 (through) November 4. Regular scheduled games for weeks 8, 9 and 10 will remain as scheduled. Additionally, the football playoffs for all classifications will now begin on November 11 and the state championships will now be scheduled for December

9 and 10," the league said in a release.

The league was also forced to extend the 2015 season by one week, when heavy rain led to massive flooding throughout the midlands and lowcountry. Some schools missed nearly two full weeks last year and their football teams would have faced the prospect of playing three games in 11 days, which would have seemed counter the league's emphasis on player safety and allowing ample recovery time between contests.

Chester was scheduled to play at Columbia tonight and Lewisville was to play host to Lamar. When it became obvious that severe weather associated with Matthew would be hitting the state today, many schools moved their games up to Thursday. That ~~was~~ originally included Chester-Columbia and Lewisville-Lamar. However, schools in Richland County (where Columbia is located) and

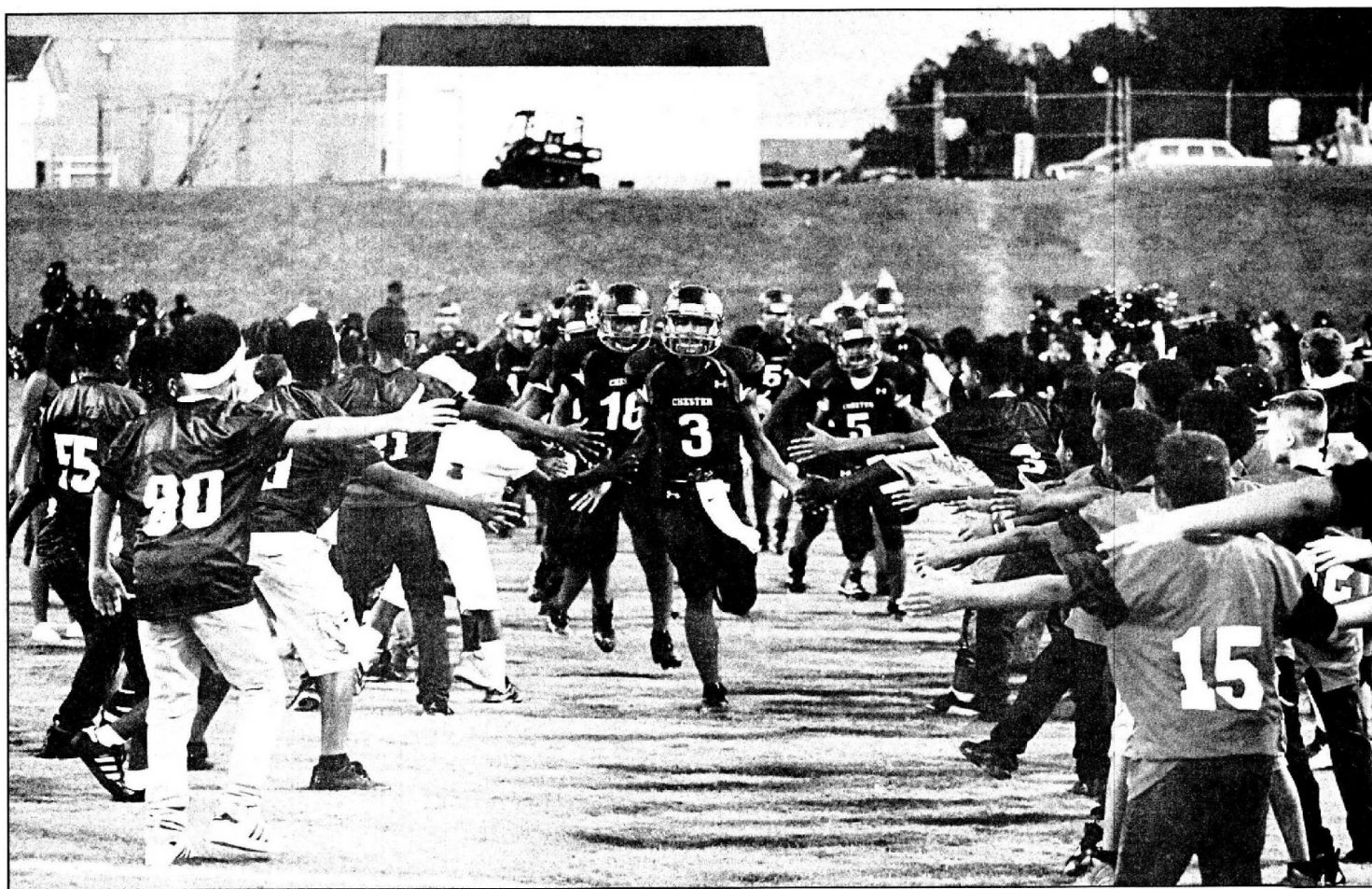
all schools to Richland's east (which would include Lamar, located in Darlington County) were ordered closed by order of Gov. Nikki Haley Tuesday. With Columbia and Lamar not in school, those games could not be Thursday. Both were rescheduled on Tuesday afternoon, for this coming Monday. Once the league extended the season, however, and with the possibility of schools still being out Monday, both contests were moved to Friday, November 4. So, Chester and Lewisville will both be off this week. Great Falls High School already had an off week scheduled for tonight and will not have its schedule affected by the storm.

Chester's schedule, originally, had the Cyclones opening the season with 10 straight games, concluding its regular season against Fairfield Central October 21, then having an off

See SCHEDULES, Page 11

cont. page not present

Title: **Lions, Cycs have games postponed**
Author: BYTRAVIS JENKINS tjenkins@onlinechester.com
Size: 106.79 column inches
Chester, SC Circulation: 6700



BY BILL MARION/SPECIAL TO THE N&R

The Chester Cyclones and the Lewisville Lions have unexpectedly gotten the week off because of Hurricane Matthew.