
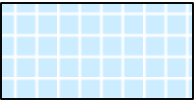
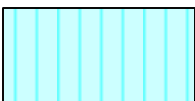





SOUTH CAROLINA
DEPARTMENT OF LABOR, LICENSING AND REGULATION
ORGANIZATIONAL CHART

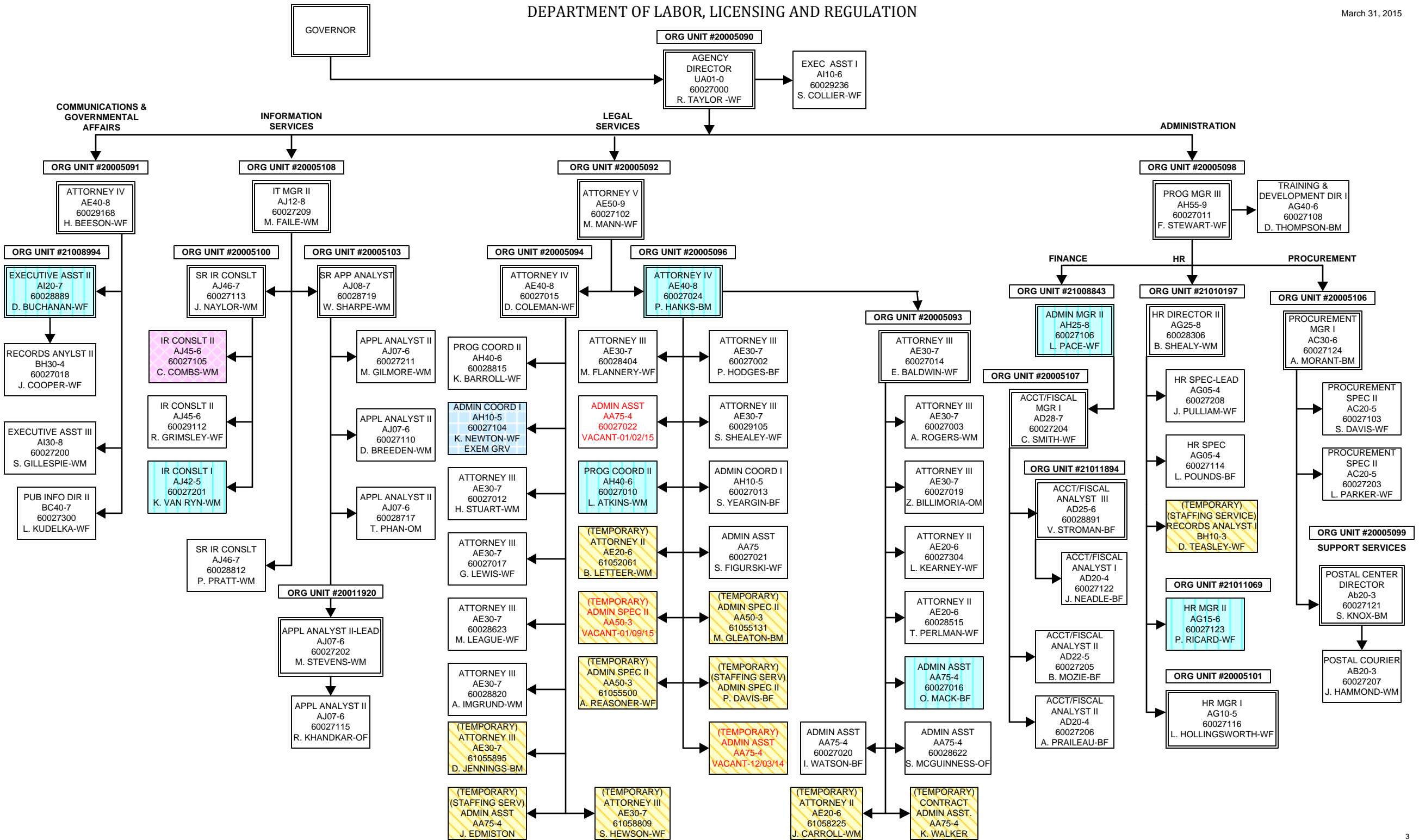
March 31, 2015

SOUTH CAROLINA
DEPARTMENT OF LABOR, LICENSING AND REGULATION
ORGANIZATIONAL CHARTS

Pink Diamond		TERI Employee
Light Blue Square		Employee returned after TERI or Retirement
Turquoise Vertical Stripe		Employee eligible to retire within 5 years by service or age
White Solid Red Letters		Vacant Position-Vacancy Date
Yellow Diagonal Stripe		Temporary Employee
Grayed out		Previously counted position

DEPARTMENT OF LABOR, LICENSING AND REGULATION

March 31, 2015



FIRE AND LIFE SAFETY
OFFICE OF STATE FIRE MARSHAL

March 31, 2015

ORG UNIT #20005090
AGENCY DIRECTOR
UA01-0
60027000
R. TAYLOR -WF

ORG UNIT #20005115
PROGRAM MGR III
AH55-9
60027317
R. POLK-WM
STATE FIRE MARSHAL

ORG UNIT #20005121
PROG MGR II
AH50-8
60028214
VACANT-8/1/14

COMMUNITY
RISK

ORG UNIT #20005135
PROG MGR II
AH50-8
60028311
D. MCMANUS-WM

ORG UNIT #20005117
PROG MGR I
AH45-7
60027403
T. WOJCIK-WM

ORG UNIT #20005116
PROG COORD II
AH40-6
60027312
S. DUNCAN-WF

ORG UNIT #20005125
ADMIN COORD I
AH10-5
60028203
C. BRAZELL-WF

ORG UNIT #20005119
PROGRAM MGR I
AH45-7
60028310
S. STICKLE-WM

ORG UNIT #21008920
PROG MGR I
AH45-7
60027500
J. HOSHALL-WM

ORG UNIT #21000022
ENG/ASSOC ENG III
HD70-7
60027422
D. BLACKWELL-WM

(TEMPORARY)
ADMIN COORD I
AH10-5
61057779
C. DAVIS-WM

PROG COORD II
AH40-6
60027324
VACANT-3/28/12

(TEMPORARY)
PROG COORD I
AH35-5
61057768
R. PORZIA-WM

ADMIN COORD II
AH15-6
60028878
VACANT-6/10/14

(TEMPORARY)
PROG COORD I
AH35-5
61057770
R. TRIPP-WM

(TEMPORARY)
PROG COORD I
AH35-5
61057741
W. ALEXANDER-A/M

(TEMPORARY)
PROG COORD I
AH35-5
60157769
B. RHODES-WM

(TEMPORARY)
PROG COORD I
AH35-5
61057767
R. JACKSON-WM

(TEMPORARY)
PROG COORD I
AH35-5
61057977
E. WEINSTEIN-WM

(TEMPORARY)
PROG COORD I
AH35-5
61057771
S. RUTHERFORD-WM

PROG ASST
AH30-4
60027318
J. STOUT-WM

PROG ASST
AH30-4
60027322
VACANT-03/02/15

(TEMPORARY)
PROG ASST
AH30-4
61057196
E. MODRZYNSKI-WM

(TEMPORARY)
PROG ASST
AH30-4
61057585
A. AMACHER-WM

(TEMPORARY)
PROG ASST
AH30-4
60027416
A. MATTHEWS-WF

(TEMPORARY)
PROG ASST
AH30-4
61057195
K. BAILEY-WF

(TEMPORARY)
PROG ASST
AH30-4
61052976
B. DIGNES-WF

(TEMPORARY)
FSO II
JC70-4
2 TEMPS

ADMIN ASST
AA75-4
60027323
J. THOMAS-WF

ADMIN ASST
AA75-4
60028215
D. LEBAR-WF

PROG COORD I
AH35-5
60027410
T. PORTER-WM

INSPECTOR III
JA85-5
60027407
C. BAINTER-WM

INSPECTOR III
JA85-5
60027406
VACANT-12/15/14

INSPECTOR III
JA85-5
60027416
A. MATTHEWS-WF

INSPECTOR III
JA85-5
60028960
C. OGDEN-WM

PROG COORD I
AH35-5
60027413
J. FARMER-WM

INSPECTOR III
JA85-5
60027411
D. SMITH-WM

INSPECTOR III
JA85-5
60027405
M. FOWLER-WM

INSPECTOR III
JA85-5
60027409
VACANT-02/18/15

INSPECTOR III
JA85-5
60027412
P. STUKES-BRADLEY-BF

PROG COORD I
AH35-5
60027417
R. BEEBE-WM

INSPECTOR III
JA85-5
60027415
G. JAMES-WM

INSPECTOR III
JA85-5
60027418
T. PADGETT-WM

INSPECTOR III
JA85-5
60027408
J. JACKSON-BM

(TEMPORARY)
EDU SPEC
CA30-4
61049276
N. ELLIS-WM

ADMIN ASST
AA75-4
60027400
S. SCOGGIN-WF

ADMIN ASST
AA75-4
60027319
V. YONCE-WF

PROG COORD I
AH35-5
60027421
VACANT-3/8/14

ENG/ASSOC ENG III
HD70-7
60027423
B. KRITZ-WM

ADMIN ASST
AA75-4
60027414
P. CHILDRESS-WF

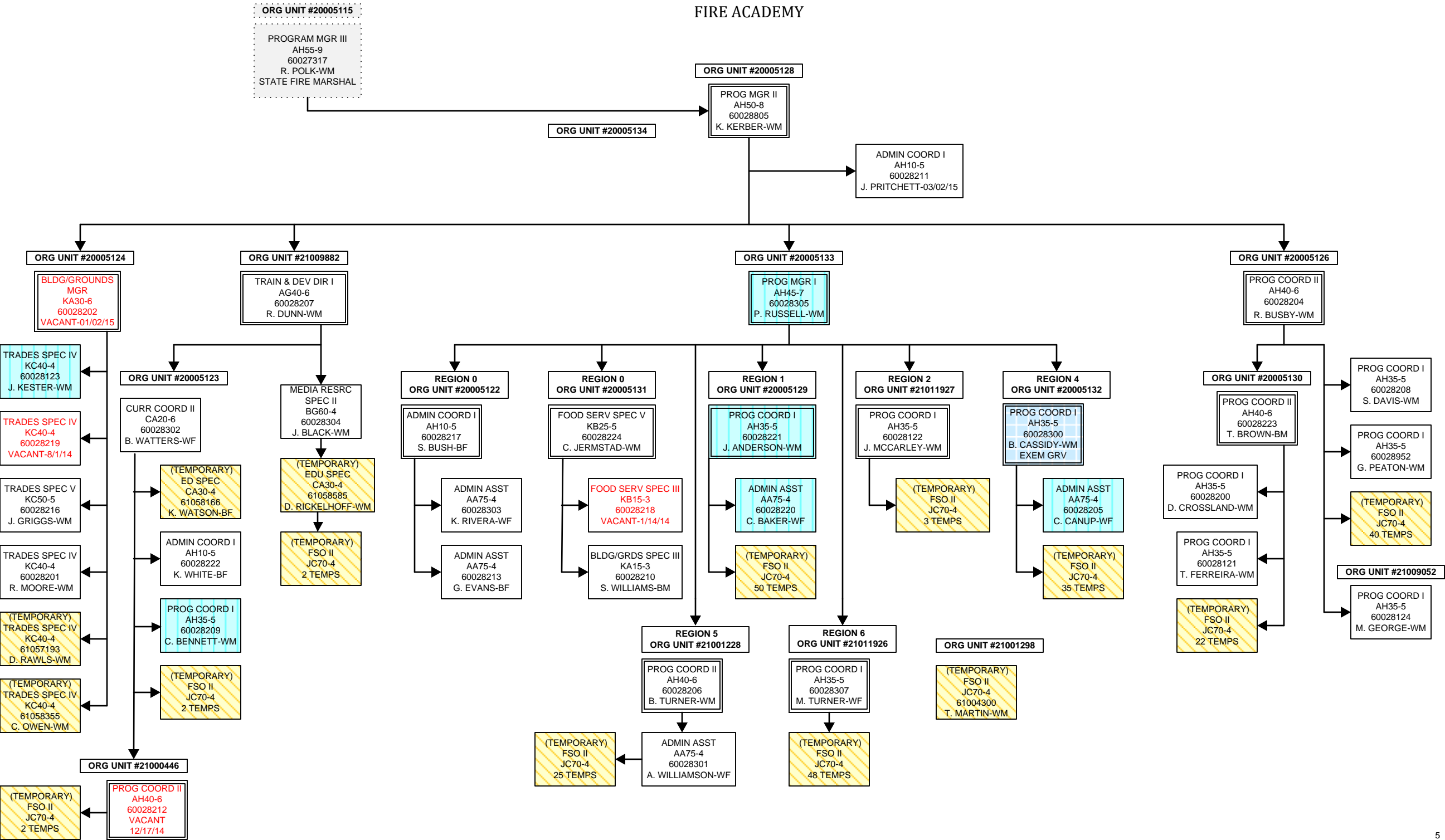
ENG/ASSOC ENG III
HD70-7
60027404
P. PATTERSON-WF

ENG/ASSOC ENG III
HD70-7
60027424
T. PENNY-WF

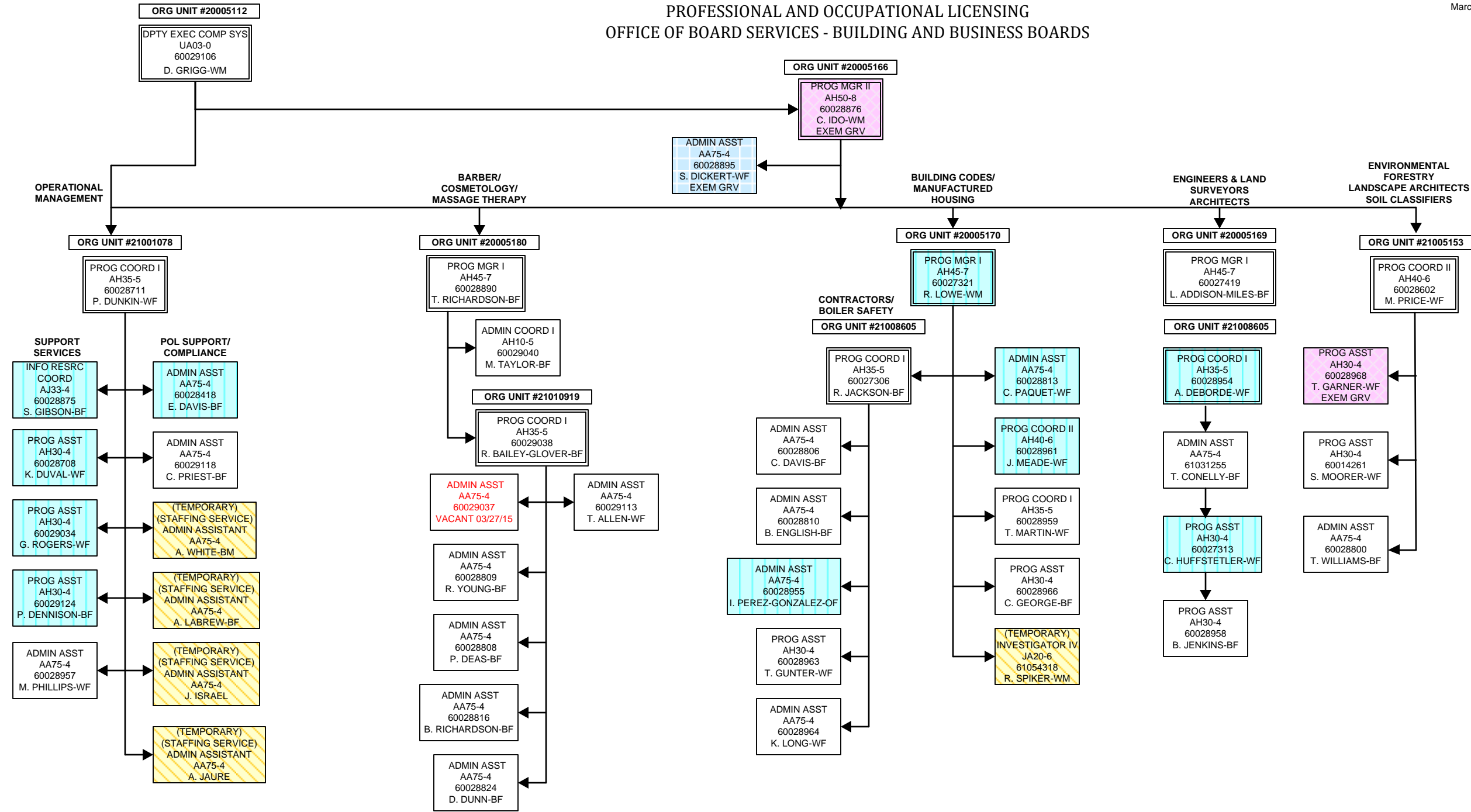
ENG/ASSOC ENG III
HD70-7
60027420
J. CAMPBELL-WM

FIRE AND LIFE SAFETY
FIRE ACADEMY

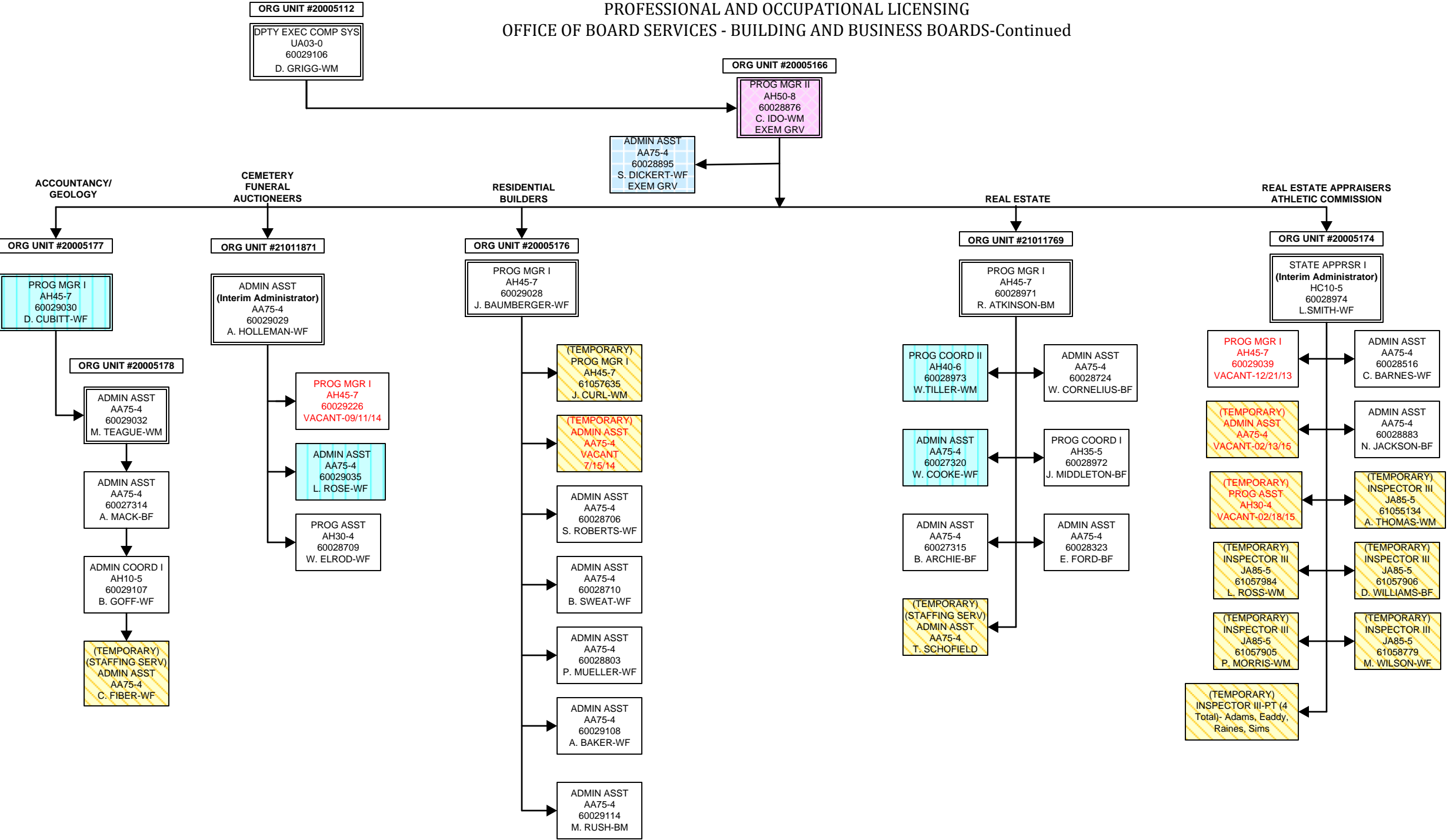
March 31, 2015



PROFESSIONAL AND OCCUPATIONAL LICENSING
OFFICE OF BOARD SERVICES - BUILDING AND BUSINESS BOARDS

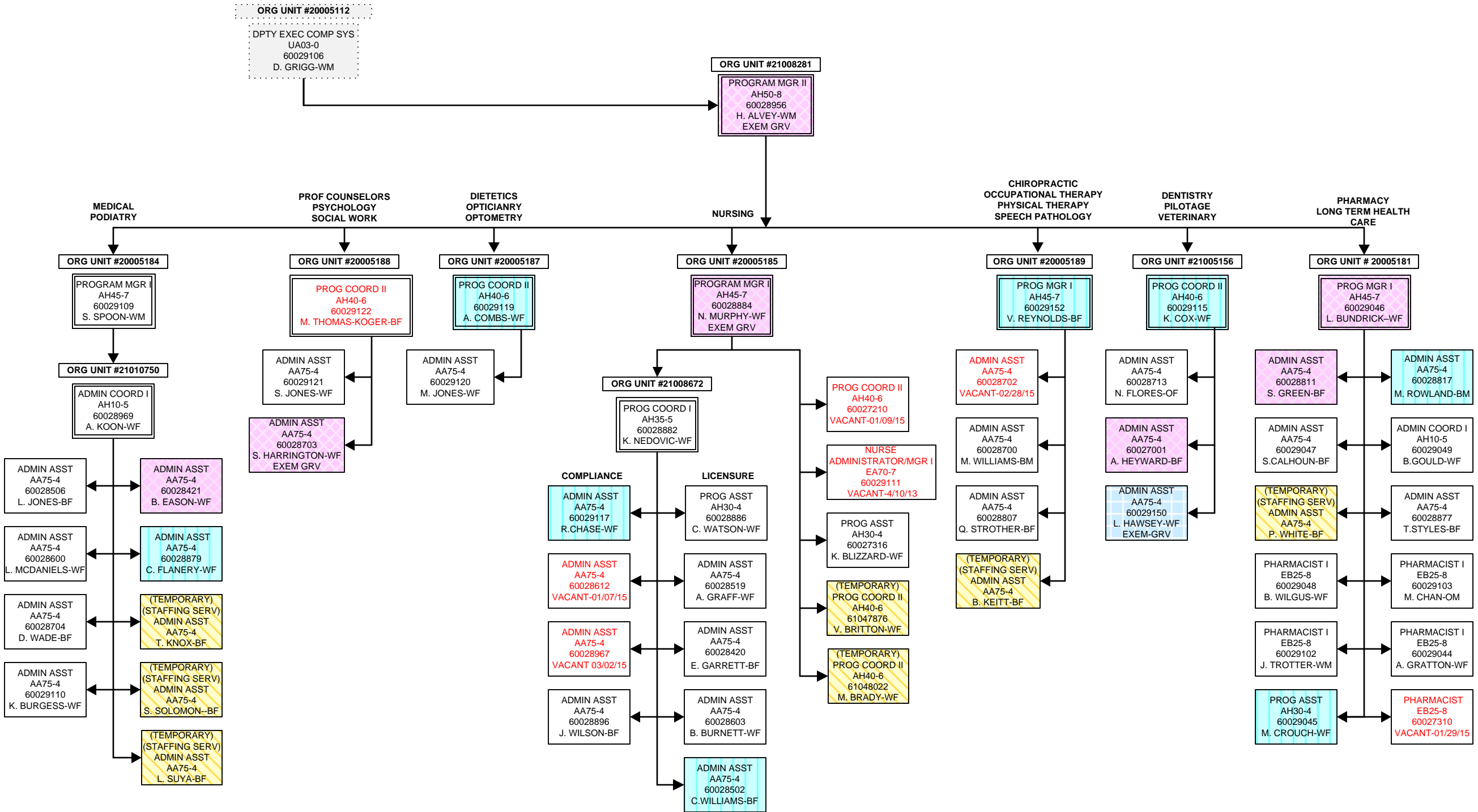


PROFESSIONAL AND OCCUPATIONAL LICENSING
OFFICE OF BOARD SERVICES - BUILDING AND BUSINESS BOARDS-Continued



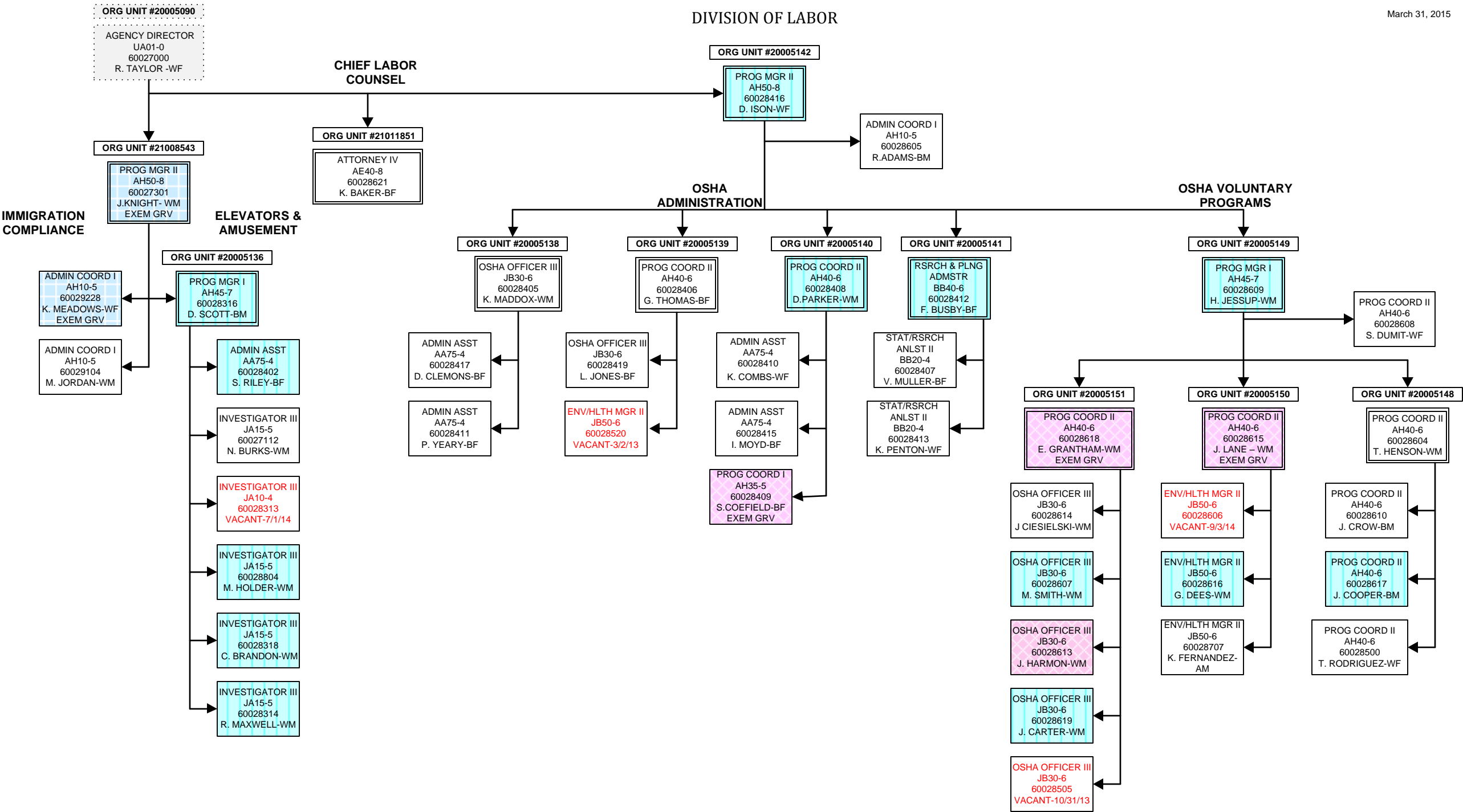
OFFICE OF BOARD SERVICES
HEALTH AND MEDICALLY RELATED BOARDS

March 31, 2015





DIVISION OF LABOR



DIVISION OF LABOR
OSHA-COMPLIANCE

