

SOUTH CAROLINA
DEPARTMENT OF LABOR, LICENSING AND REGULATION
ORGANIZATIONAL CHART

SEPTEMBER 2020

SOUTH CAROLINA
DEPARTMENT OF LABOR, LICENSING AND REGULATION
ORGANIZATIONAL CHARTS

Light Orange Square



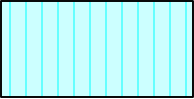
Employee Exempt from Grievance

Light Blue Square



**Employee returned after TERI
or Retirement; Exempt Grv**

Turquoise Vertical Stripe



**Employee eligible to retire
within 5 years by service
or age**

White Solid Red Letters



**Vacant Position-Vacancy
Date**

Yellow Diagonal Stripe



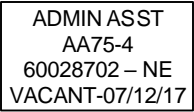
Temporary Employee

Dark Pink Outline



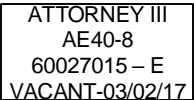
Borrowed position

NE Designation



Non-exempt position

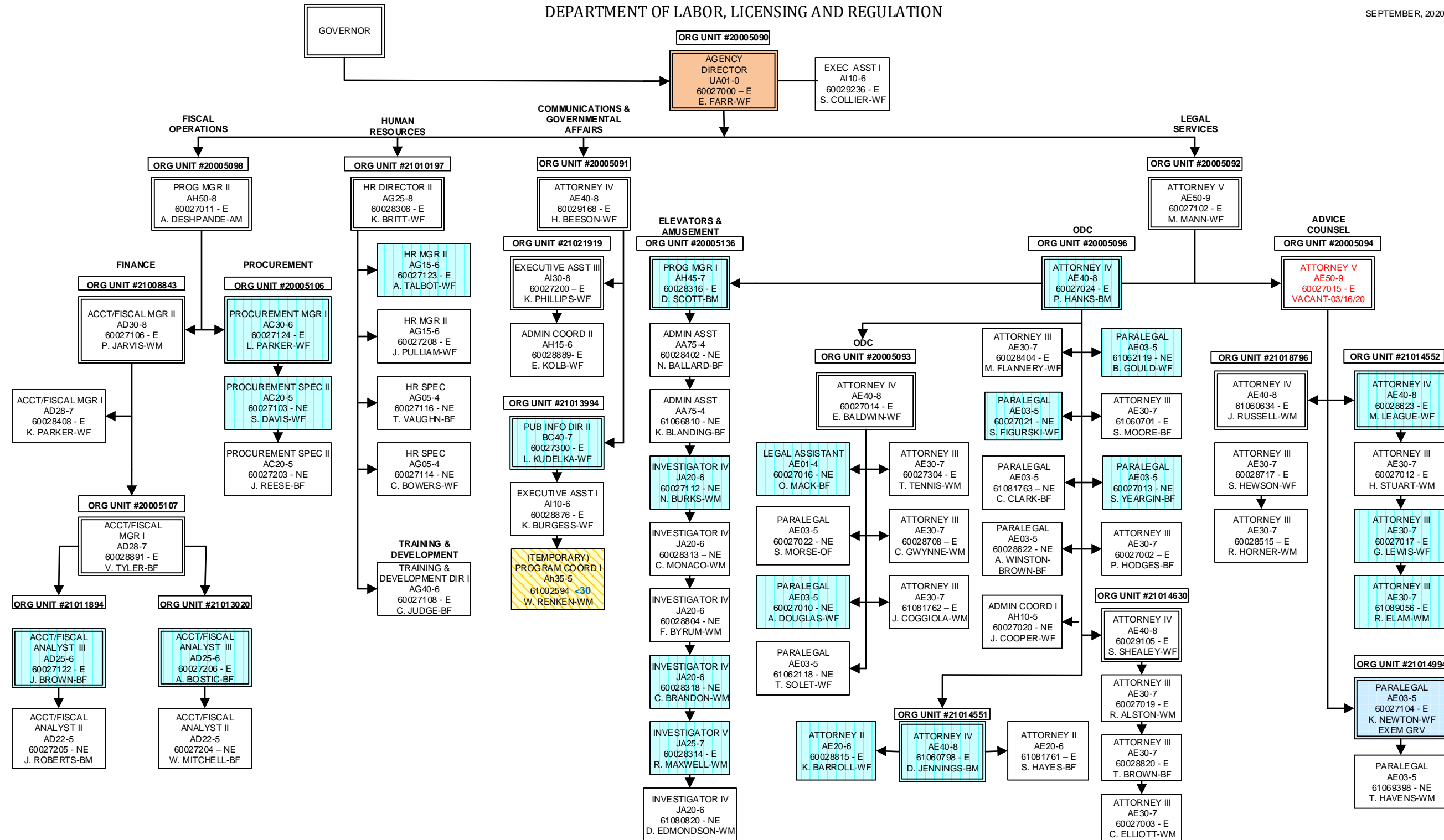
E Designation



Exempt position

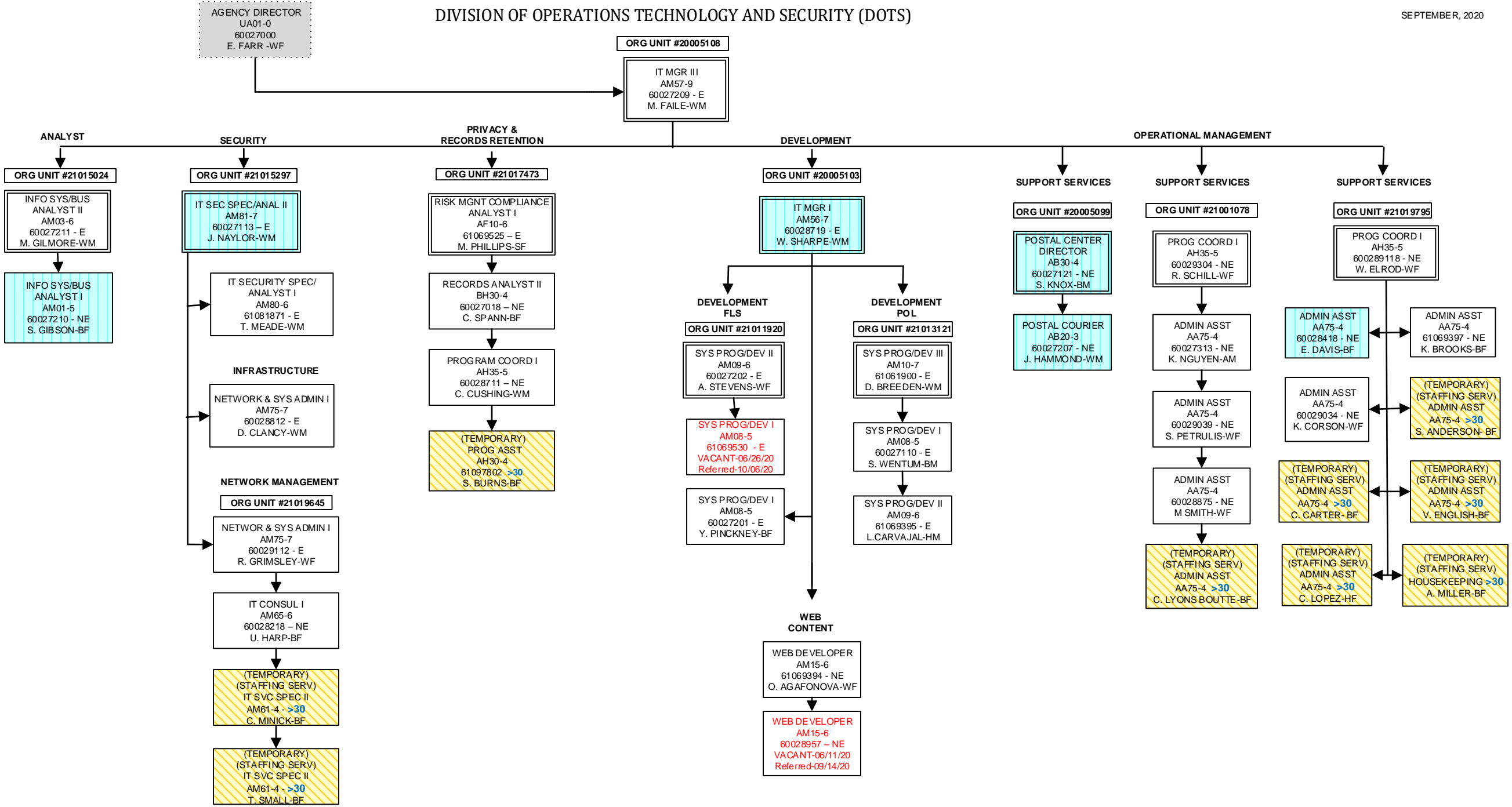
DEPARTMENT OF LABOR, LICENSING AND REGULATION

SEPTEMBER, 2020



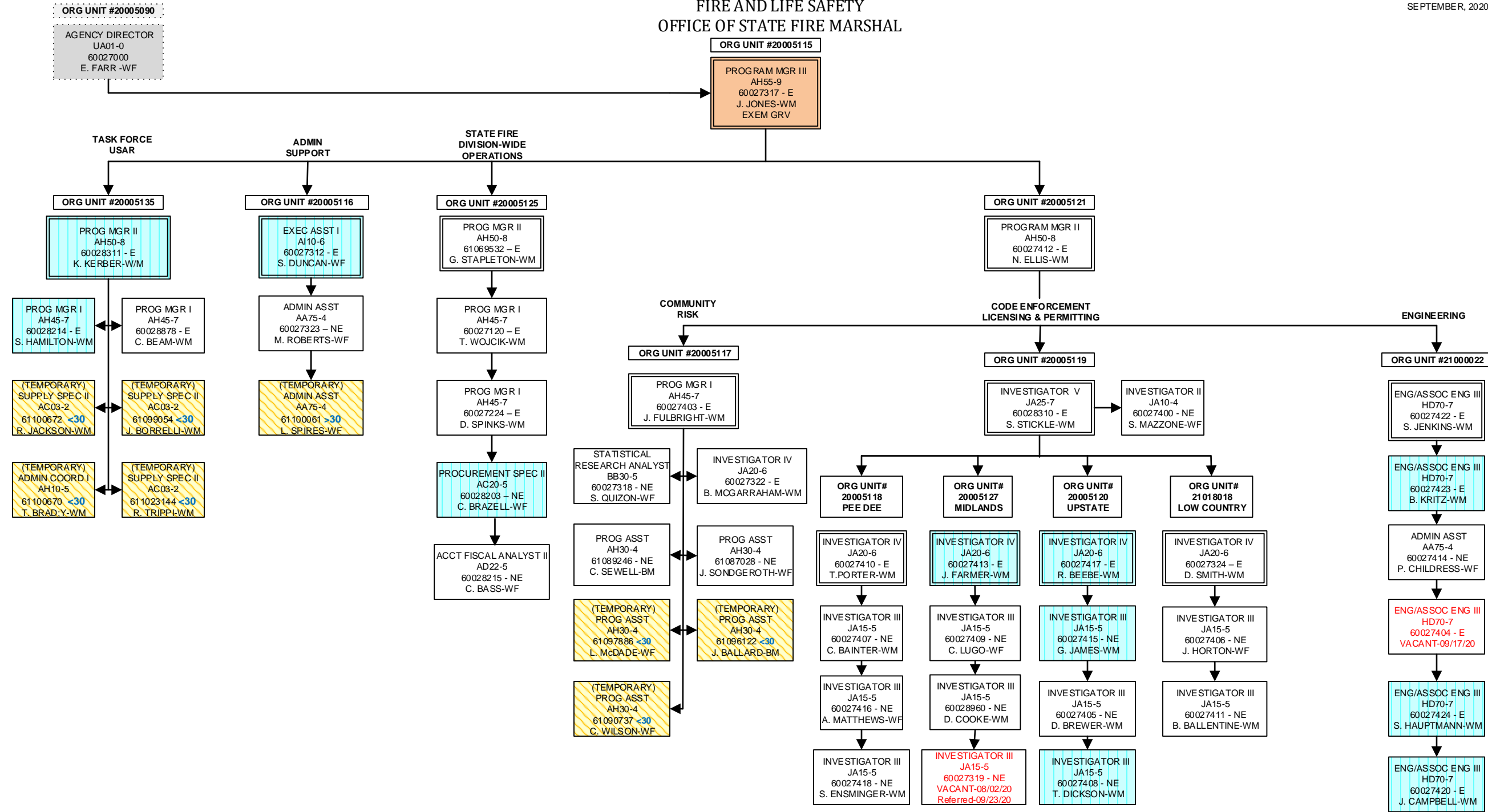
DIVISION OF OPERATIONS TECHNOLOGY AND SECURITY (DOTS)

SEPTEMBER, 2020



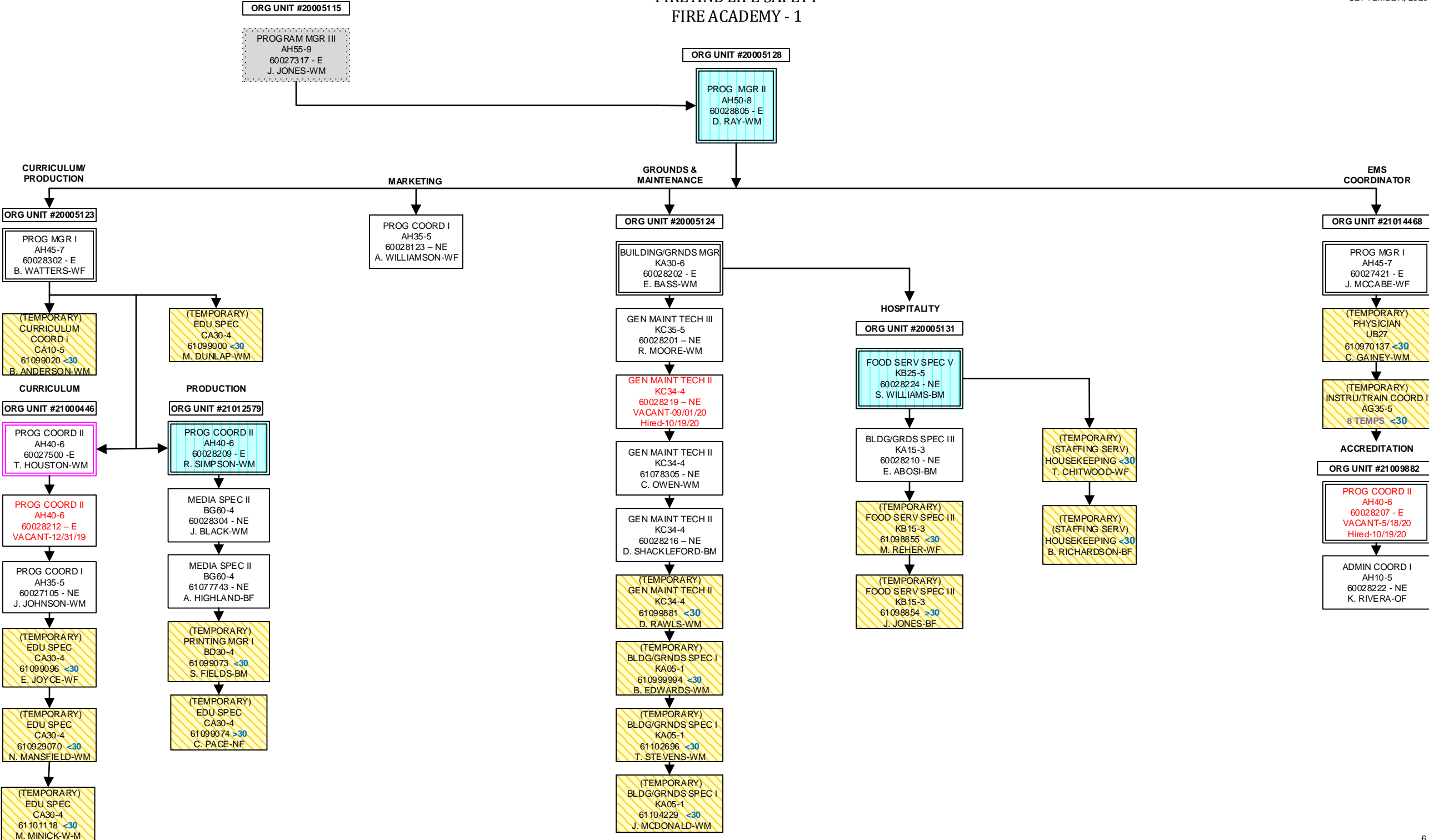
FIRE AND LIFE SAFETY
OFFICE OF STATE FIRE MARSHAL

SEPTEMBER, 2020



FIRE AND LIFE SAFETY
FIRE ACADEMY - 1

SEPTEMBER, 2020



FIRE AND LIFE SAFETY
FIRE ACADEMY -2

ORG UNIT #20005115
PROGRAM MGR III
AH55-9
60027317 - E
J. JONES-WM

ORG UNIT #20005128
PROG MGR II
AH50-8
60028805 - E
D. RAY-WM

TRAINING/
INSTRUCTION
ORG UNIT #20005133

PROG MGR I
AH45-7
60028305 - E
T. BROWN-BM

ADMINISTRATION
ORG UNIT #20005122

ADMIN COORD I
AH10-5
60028217 - E
S. BUSH-BF

ADMIN ASST
AA75-4
60028303 - NE
O. STALEY-BF

ADMIN ASST
AA75-4
60028213 - NE
G. EVANS-BF

ADMIN ASST
AA75-4
60028211 - NE
C. WESTON-BF

REGIONAL
ORG UNIT #20005126

PROG COORD II
AH40-6
60028204 - E
E. ADAMS-WM

SPECIAL OPERATIONS
ORG UNIT #21024394

PROG COORD II
AH40-6
60028206 - E
J. HEADRICK-WM

(TEMPORARY)
FSO II
JC70-4
9 TEMPS
FSO III
JC80-5
4 TEMPS

RESIDENT
ORG UNIT #20005130

PROG COORD II
AH40-6
60028223 - E
VACANT-09/17/20

PROG COORD I
AH35-5
60028124 - NE
VACANT-09/18/20
Posted-09/21/20

PROG COORD I
AH35-5
60028301 - NE
C. BECKHAM-WM

PROG COORD I
AH35-5
60028208 - NE
VACANT-12/01/19
Posted-09/11/20

(TEMPORARY)
EQUIP OPER III
KD45-3
61098687 <30
J. WHITE-WM

(TEMPORARY)
FSO II
JC70-4
9 TEMPS
FSO III
JC80-5
1 TEMP

ORG UNIT #21009052

PROG COORD I
AH35-5
60028952 - E
K. WATSON-BF

PROG COORD I
AH35-5
60028200 - NE
C. MILES-WM

(TEMPORARY)
EQUIP OPER III
KD45-3
61099072 <30
J. BROWN-WM

(TEMPORARY)
FSO I
JC80-3
1 TEMP
FSO II
JC70-4
16 TEMPS
FSO III
JC80-5
1 TEMP

ORG UNIT #20005129
REGION 1 GREENVILLE

PROG COORD I
AH35-5
60028221 - E
D. DUNCAN-WM

(TEMPORARY)
ADMIN ASST
AA75-4
61103089 - NE <30
I. WILLINGHAM-WF

(TEMPORARY)
FSO II
JC70-4
33 TEMPS
FSO III
JC80-5
6 TEMPS

ORG UNIT #21011927
REGION 2 YORK CO.

PROG COORD I
AH35-5
60028122 - E
J. MCCARLEY-WM
EXEM GRV

(TEMPORARY)
ADMIN ASST
AA75-4
61094623 >30
G. CIBBARELLI-WF

(TEMPORARY)
FSO II
JC70-4
22 TEMPS
FSO III
JC80-5
1 TEMP

ORG UNIT #20005132
REGION 3 FLORENCE

PROG COORD I
AH35-5
60028300 - E
B. CASSIDY-WM
EXEM GRV

(TEMPORARY)
FSO I
JC60-3
1 TEMP
FSO II
JC70-4
29 TEMPS
FSO III
JC80-5
1 TEMP

ORG UNIT #21024097
REGION 4 HORRY

PROG COORD I
AH35-5
60028205 - E
VACANT-08/13/20
Referred-09/04/20

ORG UNIT #21001228
REGION 5 CHARLESTON

PROG COORD I
AH35-5
60028121 - E
VACANT-07/16/20
Referred-09/04/20

(TEMPORARY)
ADMIN ASST
AA75-4
61099018 <30
E. BATES-WF

(TEMPORARY)
FSO II
JC70-4
10 TEMPS
FSO III
JC80-5
2 TEMPS

ORG UNIT #21011926
REGION 6 AIKEN

PROG COORD I
AH35-5
60028307 - E
M. TURNER-WF

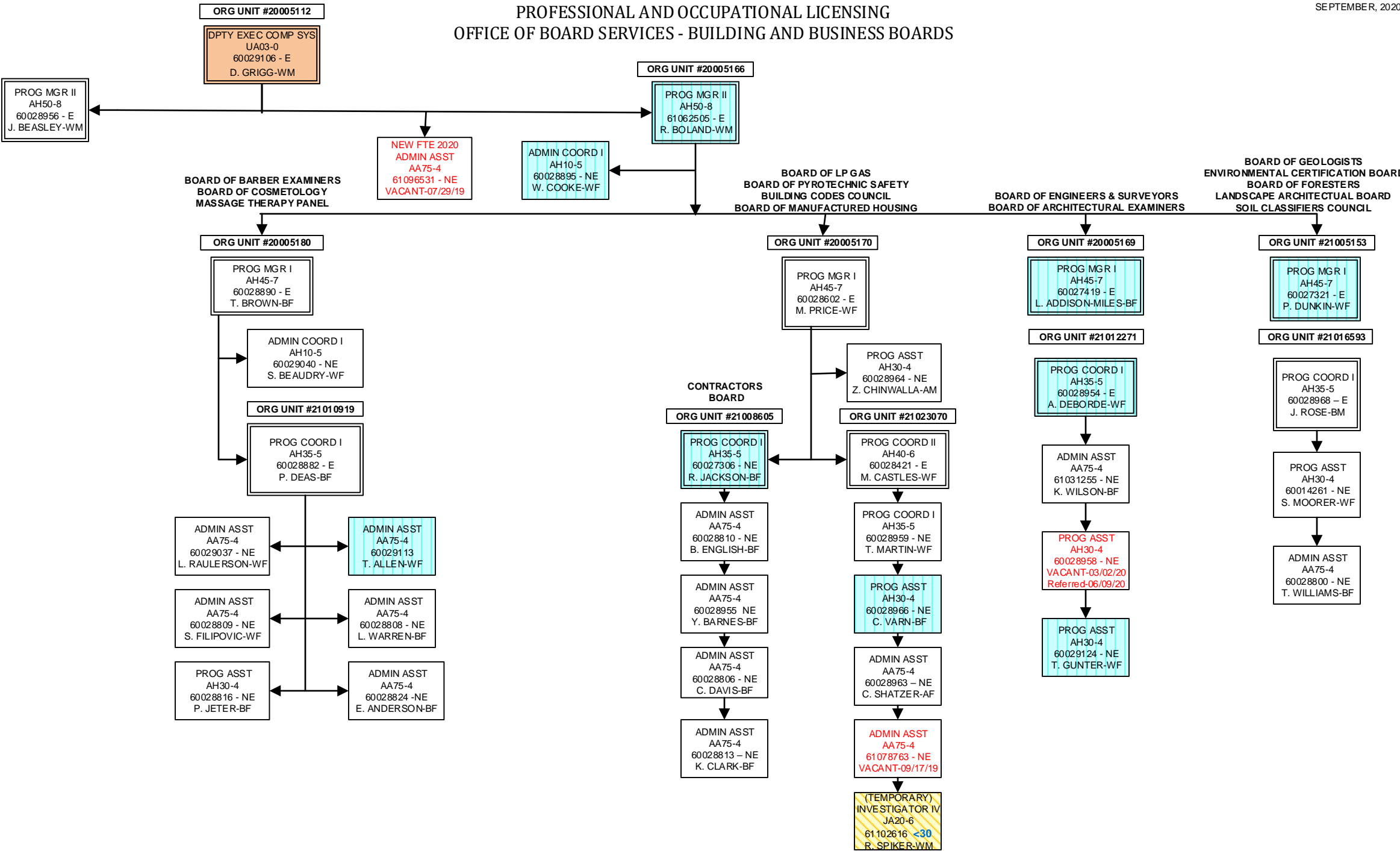
(TEMPORARY)
ADMIN ASST
AA75-4
61099019 <30
L. WAY-WF

(TEMPORARY)
FSO II
JC70-4
14 TEMPS
FSO III
JC80-5
0 TEMP

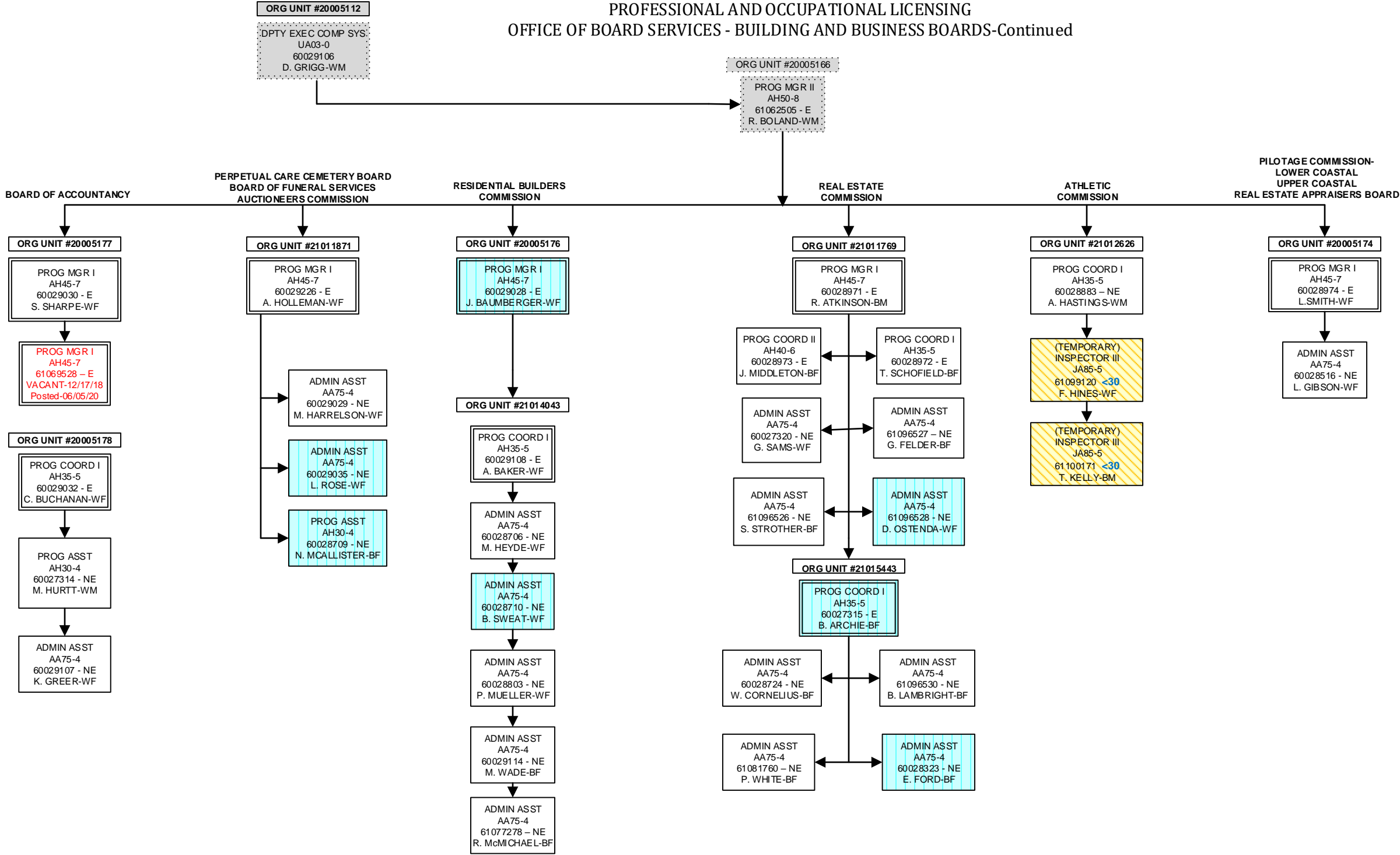
ORG UNIT #21024098
REGION 7 ANDERSON

PROG COORD I
AH35-5
60028220 - E
VACANT-08/13/20
Referred-09/08/20

(TEMPORARY)
FSO II
JC70-4
8 TEMPS
FSO III
JC80-5
2 TEMPS

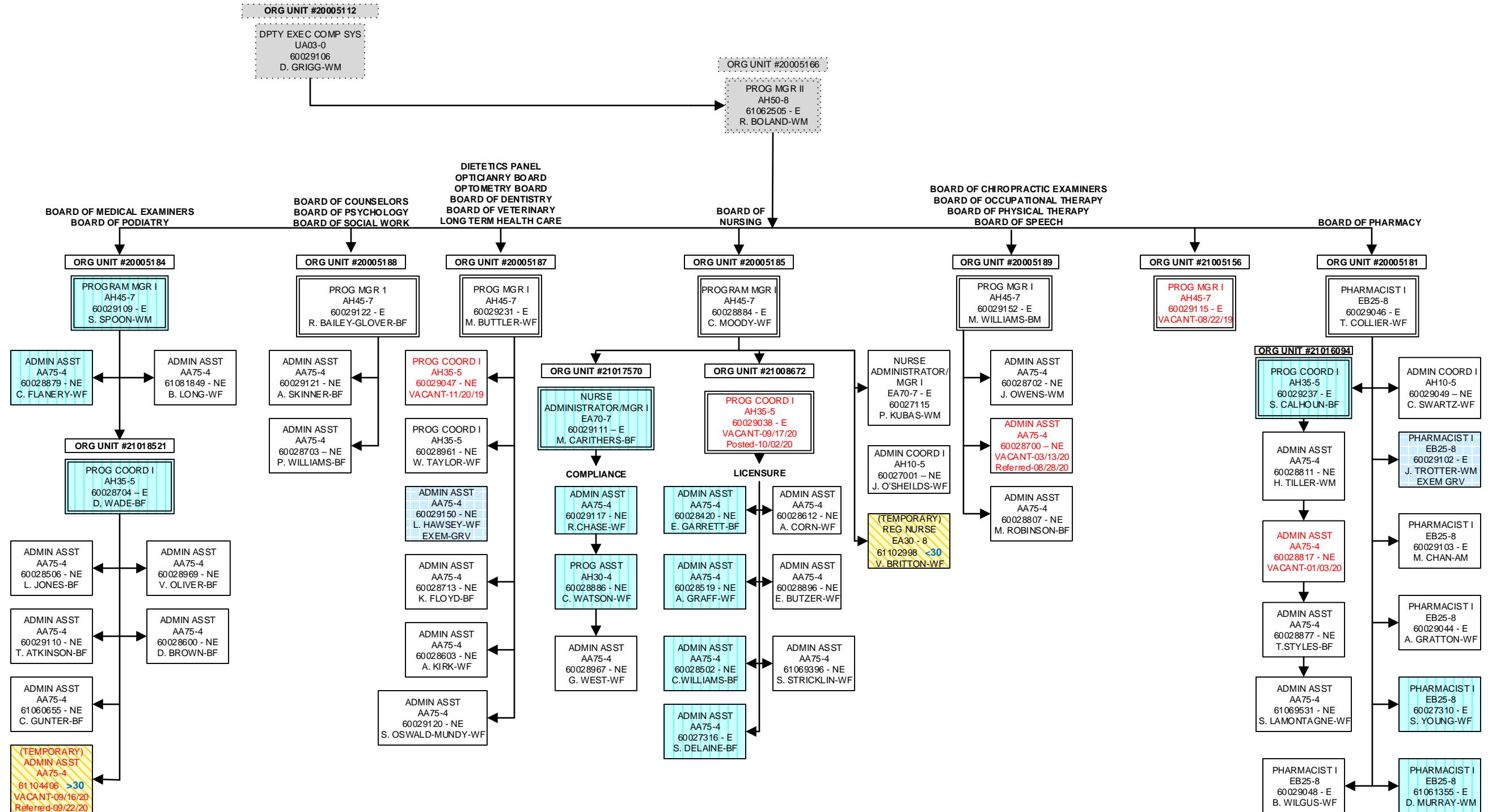


PROFESSIONAL AND OCCUPATIONAL LICENSING
OFFICE OF BOARD SERVICES - BUILDING AND BUSINESS BOARDS-Continued



OFFICE OF BOARD SERVICES
HEALTH AND MEDICALLY RELATED BOARDS

SEPTEMBER, 2020



OFFICE OF INVESTIGATIONS AND ENFORCEMENT

