

From: Schimsa, Rebecca <RebeccaSchimsa@gov.sc.gov>

To: Haley, Nikkigovhaley@gov.sc.gov

Haley, MichaelMichaelHaley@gov.sc.gov

Patel, SwatiSwatiPatel@gov.sc.gov

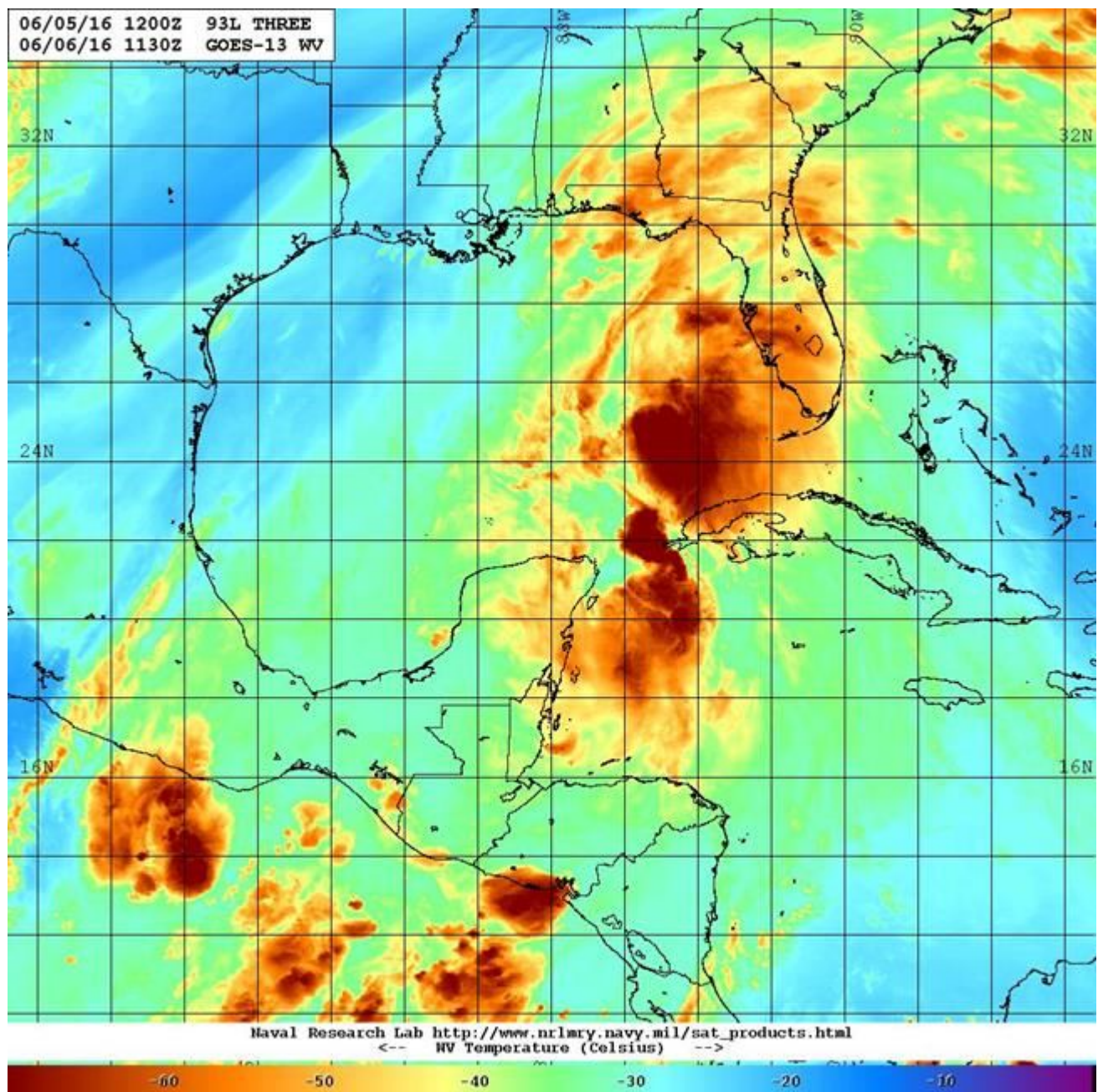
Pisarik, HollyHollyPisarik@gov.sc.gov

Date: 6/6/2016 8:35:59 AM

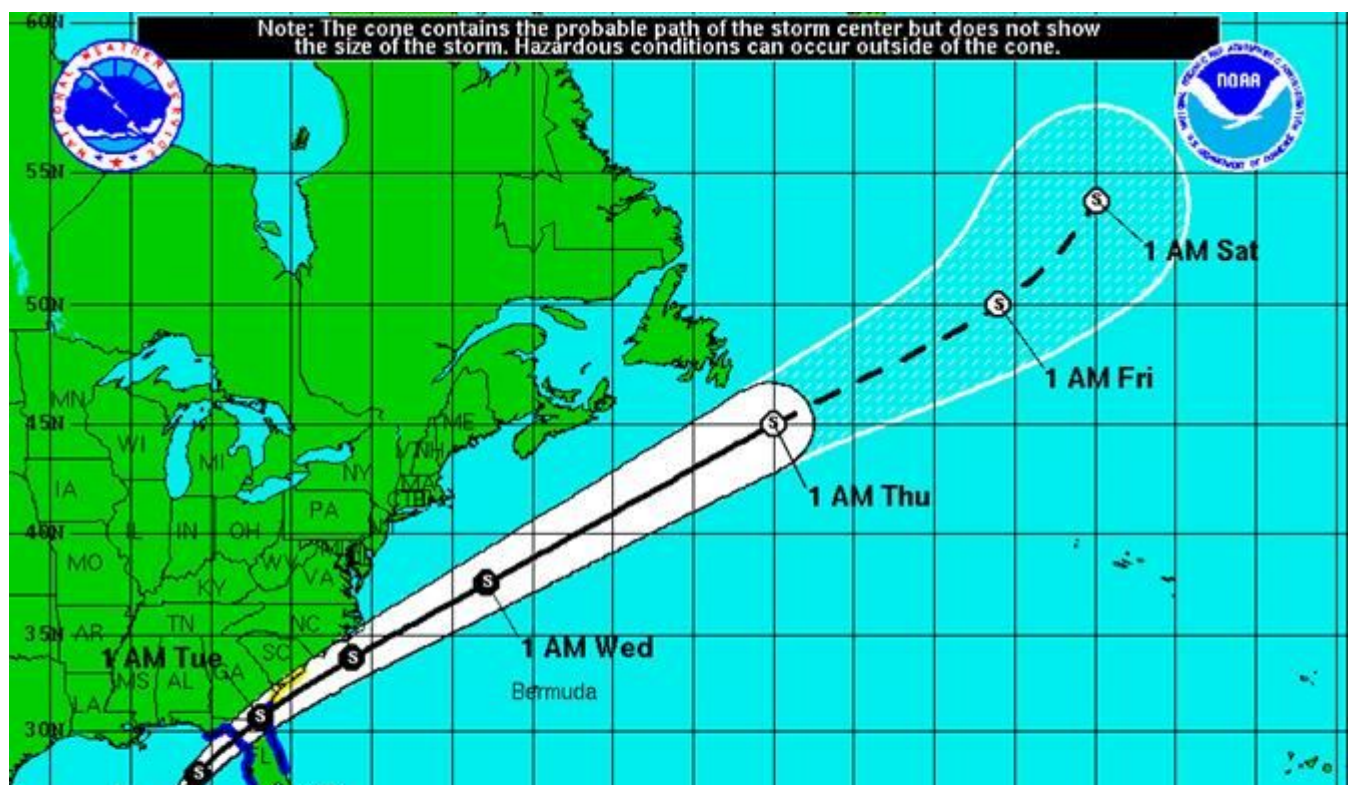
Subject: EMD Alert - TS Colin

Yesterday, Tropical Storm Colin formed and is currently 630 miles southwest of Beaufort SC. Colin is tracking northeast at 15 mph with 50 mph winds. Colin will make landfall near Cedar Key FL later tonight.

Colin rockets across Florida and is offshore Charleston by 0700 tomorrow as a disorganized tropical storm. Strongest winds remain off the beach. Colin could bring periods of heavy rain along the coast. Conservative rainfall amounts of 4-6 inches south and east of a line from Barnwell to Dillon County are indicated in the latest model run but those amounts are highly dependent on the actual track of Colin that will remain poorly organized.



National Hurricane Center's track forecast:



Mark Malsick
SC State Climate Office
SC Department of Natural Resources
1000 Assembly Street, Columbia SC 29001
803-734-0039
malsickm@dnr.sc.gov