
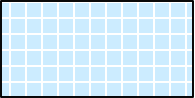
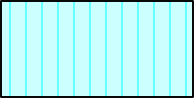



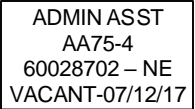
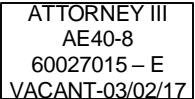


SOUTH CAROLINA
DEPARTMENT OF LABOR, LICENSING AND REGULATION
ORGANIZATIONAL CHART

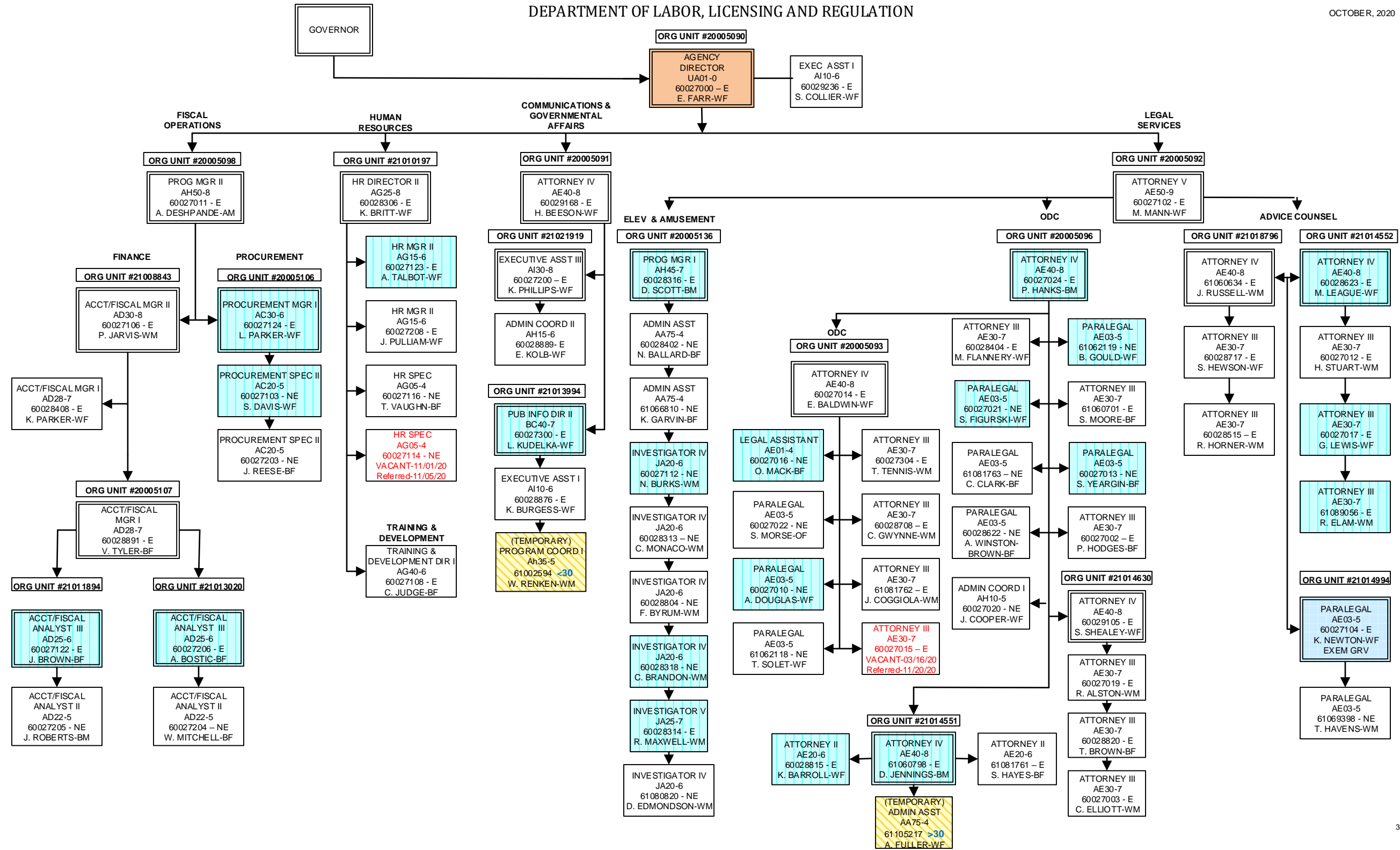
NOVEMBER 2020

SOUTH CAROLINA
DEPARTMENT OF LABOR, LICENSING AND REGULATION
ORGANIZATIONAL CHARTS

Light Orange Square		Employee Exempt from Grievance
Light Blue Square		Employee returned after TERI or Retirement; Exempt Grv
Turquoise Vertical Stripe		Employee eligible to retire within 5 years by service or age
White Solid Red Letters		Vacant Position-Vacancy Date
Yellow Diagonal Stripe		Temporary Employee
Dark Pink Outline		Borrowed position
NE Designation		Non-exempt position
E Designation		Exempt position

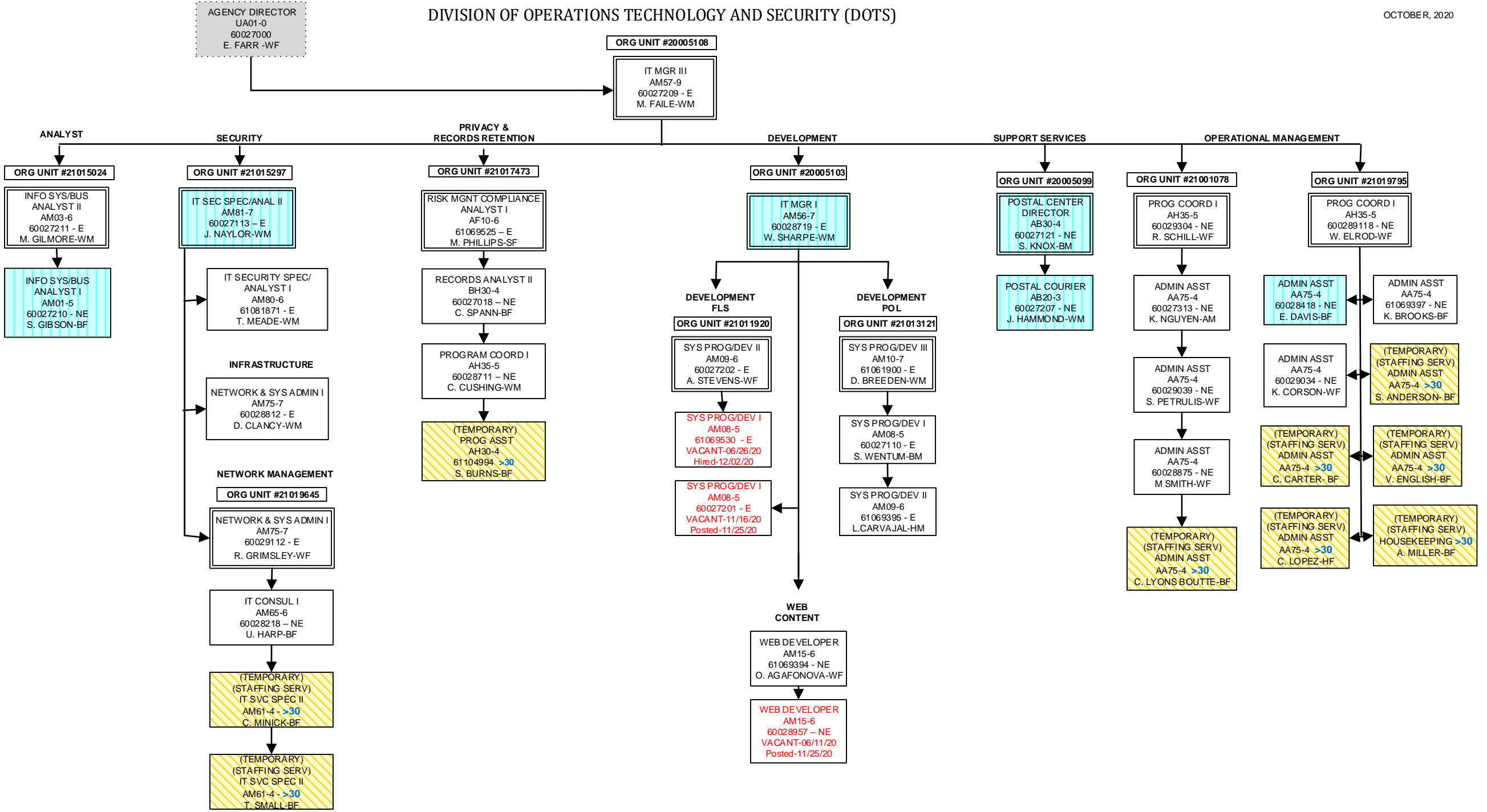
DEPARTMENT OF LABOR, LICENSING AND REGULATION

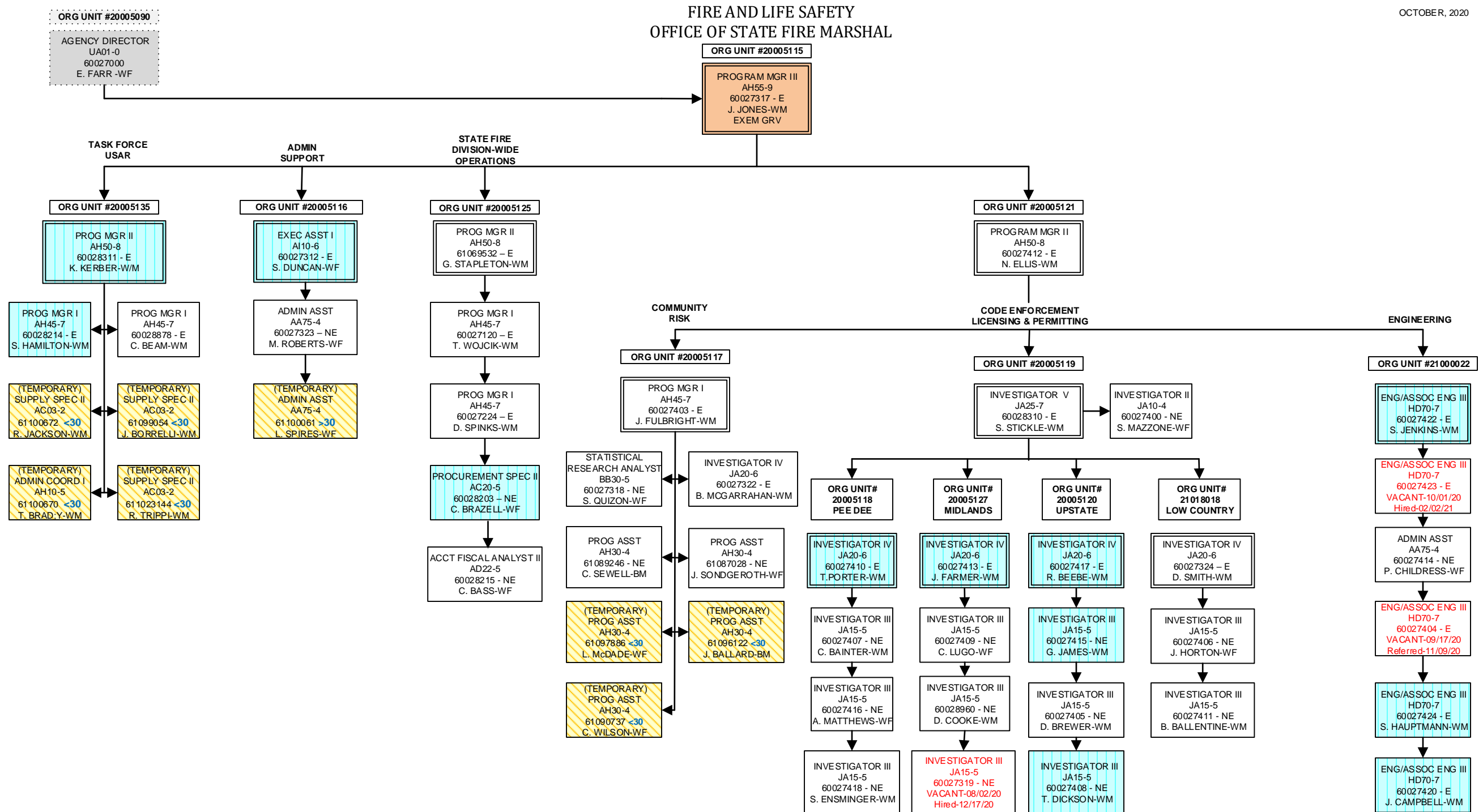
OCTOBER, 2020



DIVISION OF OPERATIONS TECHNOLOGY AND SECURITY (DOTS)

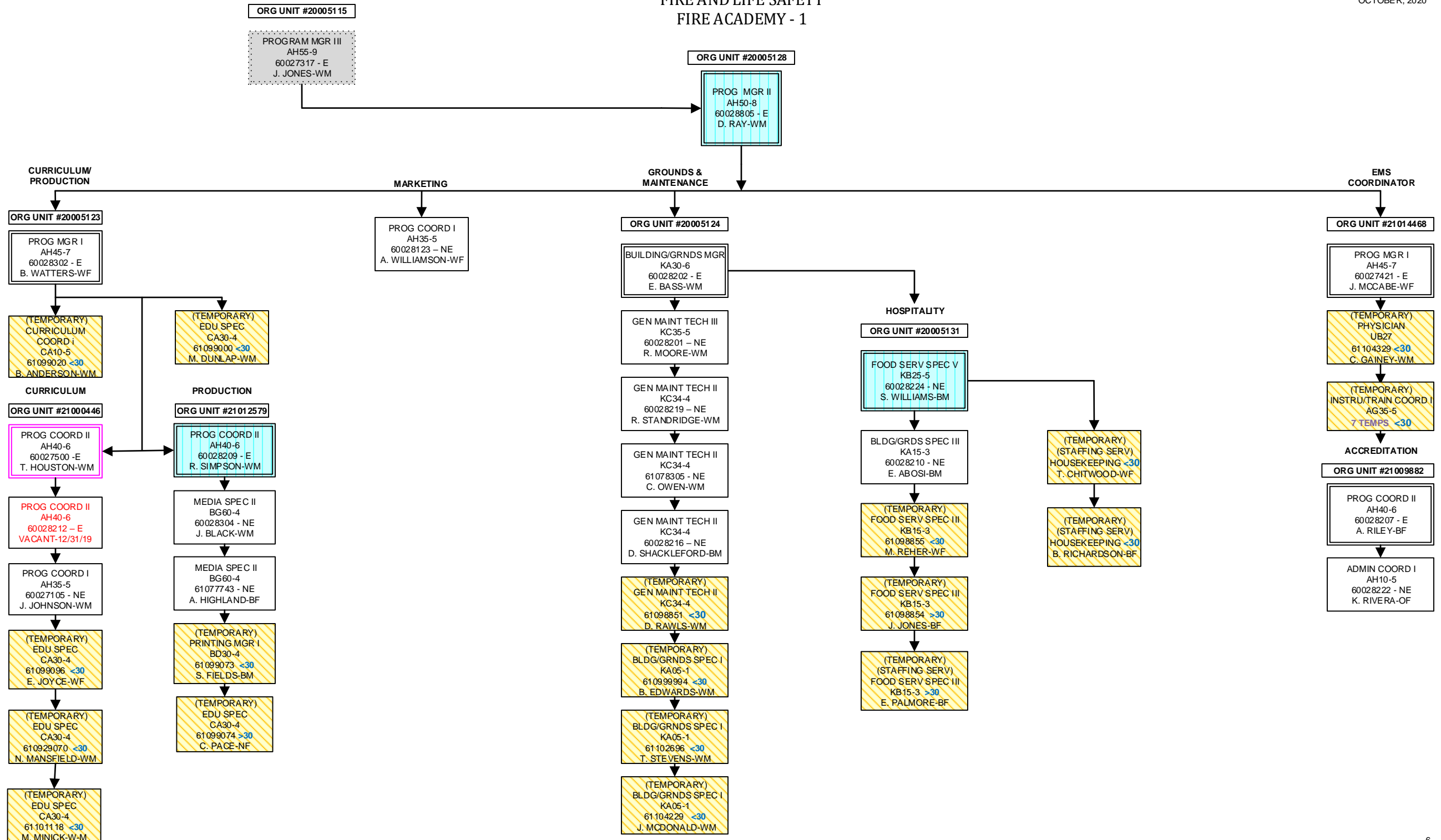
OCTOBER, 2020





FIRE ACADEMY - 1

OCTOBER, 2020



FIRE AND LIFE SAFETY
FIRE ACADEMY -2

OCTOBER, 2020

ORG UNIT #20005115
PROGRAM MGR III
AH55-9
60027317 - E
J. JONES-WM

ORG UNIT #20005128
PROG MGR II
AH50-8
60028805 - E
D. RAY-WM

TRAINING/
INSTRUCTION
ORG UNIT #20005133

PROG MGR I
AH45-7
60028305 - E
T. BROWN-BM

ADMINISTRATION

ORG UNIT #20005122

ADMIN COORD I
AH10-5
60028217 - E
S. BUSH-BF

ADMIN ASST
AA75-4
60028303 - NE
O. STALEY-BF

ADMIN ASST
AA75-4
60028213 - NE
G. EVANS-BF

ADMIN ASST
AA75-4
60028211 - NE
C. WESTON-BF

REGIONAL

ORG UNIT #20005126

PROG COORD II
AH40-6
60028204 - E
E. ADAMS-WM

SPECIAL OPERATIONS

ORG UNIT #21024393

PROG COORD II
AH40-6
60028206 - E
J. HEADRICK-WM

(TEMPORARY)
FSO II
JC70-4
9 TEMPS
FSO III
JC80-5
4 TEMPS

RESIDENT

ORG UNIT #20005130

PROG COORD II
AH40-6
60028223 - E
K. WATSON-BF

ORG UNIT #21009052

PROG COORD I
AH35-5
60028124 - NE
VACANT-09/18/20
Posted-09/21/20

PROG COORD I
AH35-5
60028952 - E
VACANT-10/02/20

PROG COORD I
AH35-5
60028200 - NE
C. MILES-WM

(TEMPORARY)
EQUIP OPER III
KD45-3
61099072 <30
J. BROWN-WM

(TEMPORARY)
FSO I
JC80-3
1 TEMP
FSO II
JC70-4
16 TEMPS
FSO III
JC80-5
2 TEMPS

ORG UNIT #20005129
REGION 1 GREENVILLE

PROG COORD I
AH35-5
60028221 - E
D. DUNCAN-WM

(TEMPORARY)
ADMIN ASST
AA75-4
61103089 - NE <30
I. WILLINGHAM-WF

(TEMPORARY)
FSO II
JC70-4
32 TEMPS
FSO III
JC80-5
7 TEMPS

ORG UNIT #21011927
REGION 2 YORK CO.

PROG COORD I
AH35-5
60028122 - E
J. MCCARLEY-WM
EXEM GRV

(TEMPORARY)
ADMIN ASST
AA75-4
61094623 <30
G. CIBBARELLI-WF

(TEMPORARY)
FSO II
JC70-4
22 TEMPS
FSO III
JC80-5
0 TEMP

ORG UNIT #20005132
REGION 3 FLORENCE

PROG COORD I
AH35-5
60028300 - E
B. CASSIDY-WM
EXEM GRV

(TEMPORARY)
FSO I
JC80-3
1 TEMP
FSO II
JC70-4
29 TEMPS
FSO III
JC80-5
2 TEMPS

ORG UNIT #21024097
REGION 4 HORRY

PROG COORD I
AH35-5
60028205 - E
VACANT-08/13/20
Posted-11/06/20

ORG UNIT #21001228
REGION 5 CHARLESTON

PROG COORD I
AH35-5
60028121 - E
E. BOLEN-WM

(TEMPORARY)
ADMIN ASST
AA75-4
61099018 <30
E. BATES-WF

(TEMPORARY)
FSO II
JC70-4
10 TEMPS
FSO III
JC80-5
2 TEMPS

ORG UNIT #21011926
REGION 6 AIKEN

PROG COORD I
AH35-5
60028307 - E
M. TURNER-WF

(TEMPORARY)
ADMIN ASST
AA75-4
61099019 <30
L. WAY-WF

(TEMPORARY)
FSO II
JC70-4
14 TEMPS
FSO III
JC80-5
0 TEMP

ORG UNIT #21024098
REGION 7 ANDERSON

PROG COORD I
AH35-5
60028220 - E
W. CRAFT-WM

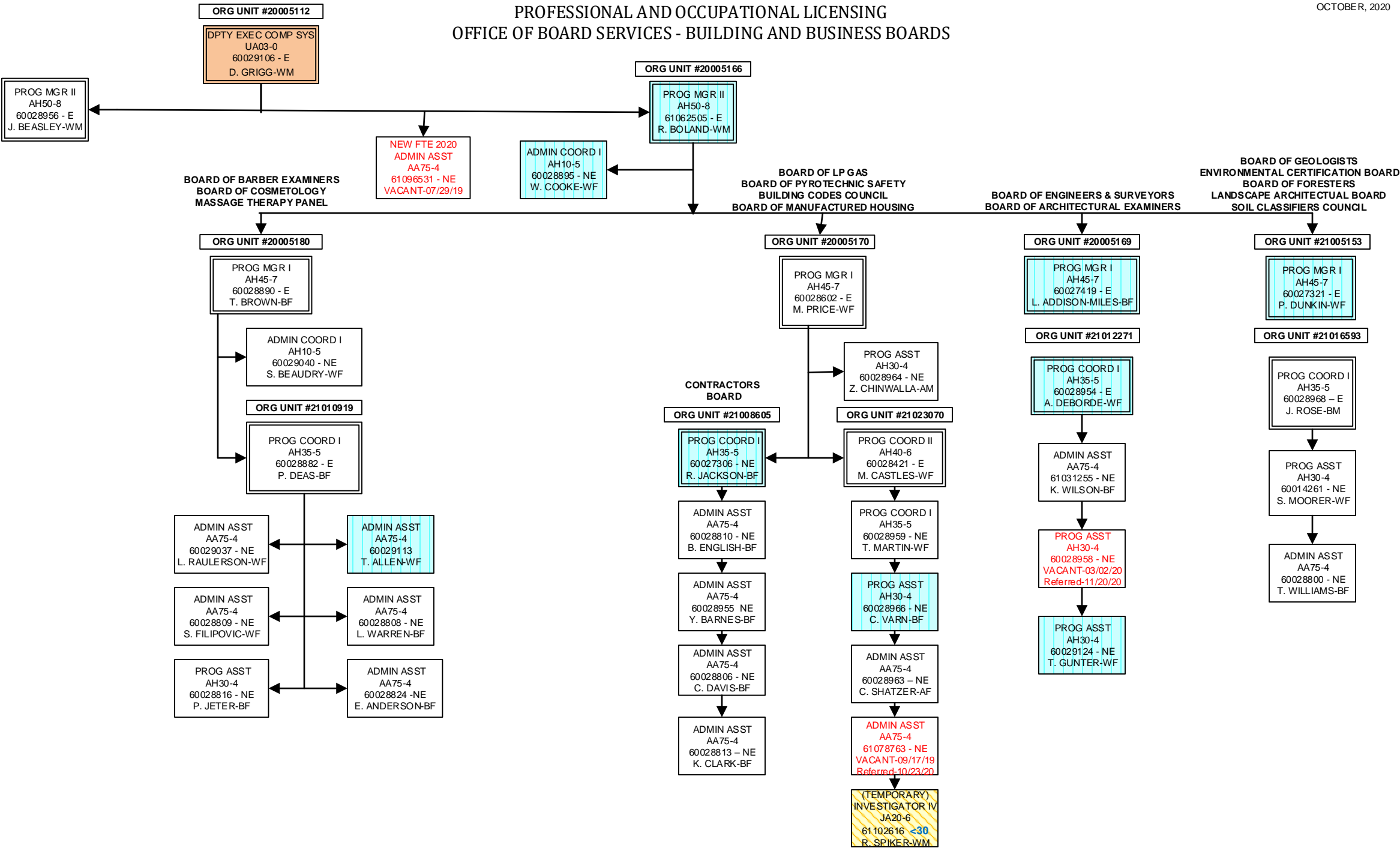
(TEMPORARY)
FSO II
JC70-4
8 TEMPS
FSO III
JC80-5
2 TEMPS

PROG COORD I
AH35-5
60028301 - NE
C. BECKHAM-WM

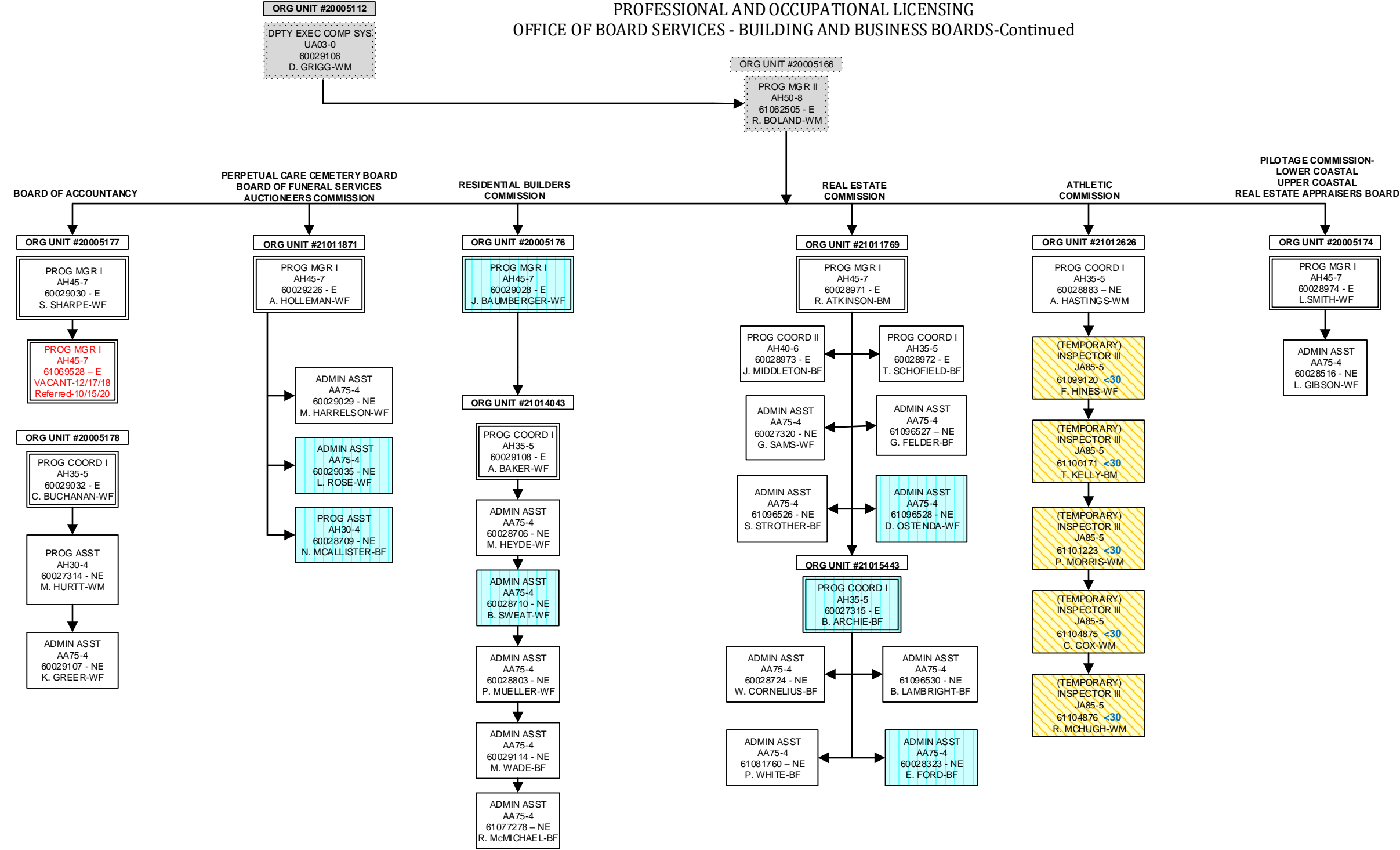
PROG COORD I
AH35-5
60028208 - NE
VACANT-12/01/19
Referred-11/25/20

(TEMPORARY)
EQUIP OPER III
KD45-3
61098687 <30
J. WHITE-WM

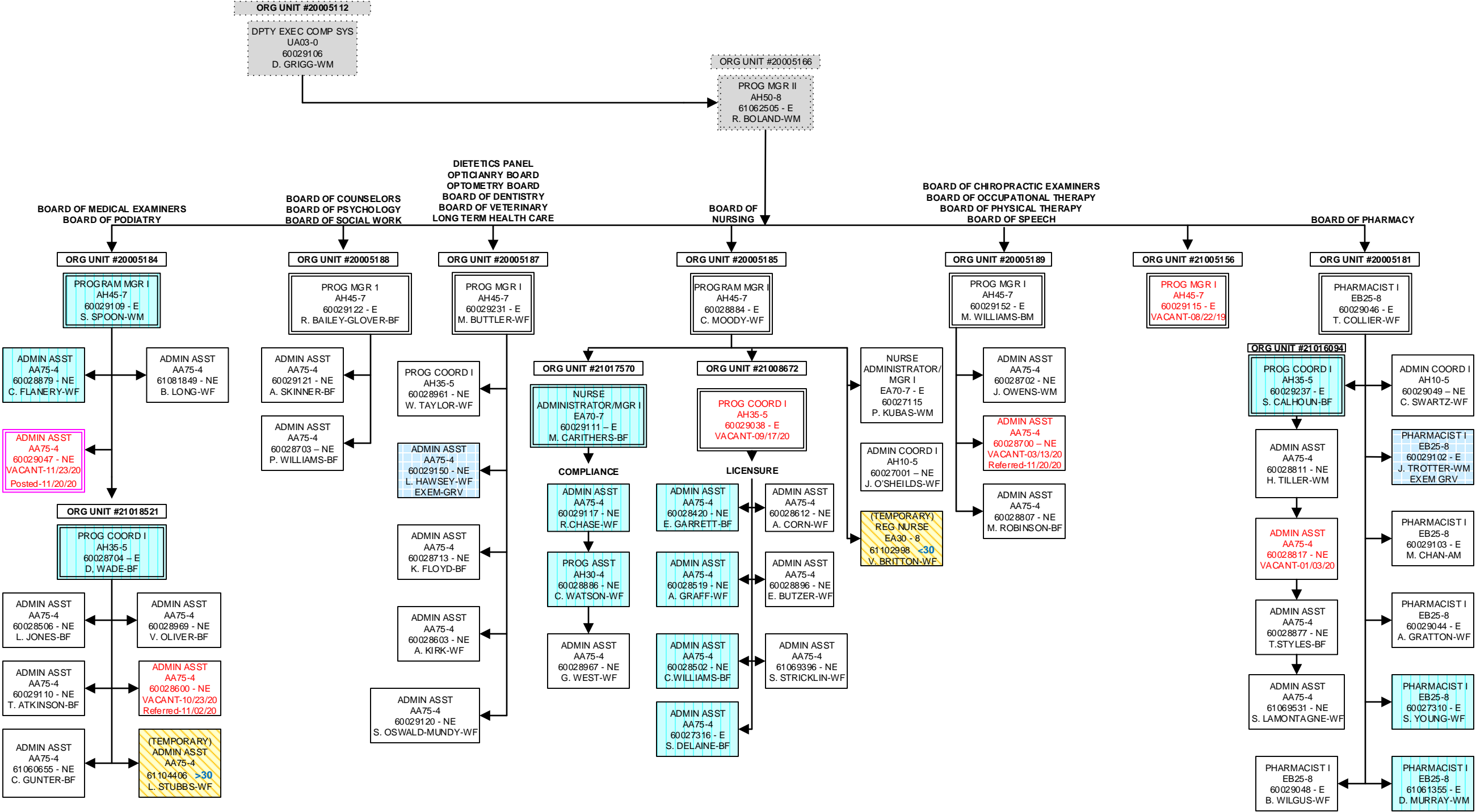
(TEMPORARY)
FSO II
JC70-4
9 TEMPS
FSO III
JC80-5
1 TEMP



PROFESSIONAL AND OCCUPATIONAL LICENSING
OFFICE OF BOARD SERVICES - BUILDING AND BUSINESS BOARDS-Continued



OFFICE OF BOARD SERVICES
HEALTH AND MEDICALLY RELATED BOARDS



OFFICE OF INVESTIGATIONS AND ENFORCEMENT

