

PHOTOGRAPH LOG

| Photo | Digital File Name | Description |
|-------|--|--|
| 1 | SC_Beaufort County_Bldg 157_0511301 | Exterior: south elevation looking north from Cape Gauffre Street |
| 2 | SC_Beaufort County_Bldg 157_0511302 | Exterior: oblique south and west elevations looking northeast from Cape Gauffre Street |
| 3 | SC_Beaufort County_Bldg 157_0511303 | Exterior: oblique north and east elevations looking southwest from grass area |
| 4 | SC_Beaufort County_Bldg 157_0511304 | Exterior: oblique north and east elevations looking southwest from grass area |
| 5 | SC_Beaufort County_Bldg 157_0511305 | Exterior, detail: engaged porch with metal posts looking southwest |
| 6 | SC_Beaufort County_Bldg 157_0511306 | Exterior, detail: cornice profile northeast corner |
| 7 | SC_Beaufort County_Bldg 157_0511307 | Exterior, detail: gutter/downspout and window sills on east elevation looking south |
| 8 | SC_Beaufort County_Bldg 157_0511308 | Exterior, detail: awning and corner window on south elevation looking west |
| 9 | SC_Beaufort County_Bldg 157_0511309 | Exterior, detail: window box on south elevation |
| 10 | SC_Beaufort County_Bldg 157_0511310 | Exterior, detail: roof ridge and vents looking northwest |
| 11 | SC_Beaufort County_Bldg 157_0511311 | Interior, first floor, Room #1 looking north |
| 12 | SC_Beaufort County_Bldg 157_0511312 | Interior, first floor, Room #1 looking southwest |
| 13 | SC_Beaufort County_Bldg 157_0511313 | Interior, first floor, Room #1 and #2 looking south |
| 14 | SC_Beaufort County_Bldg 157_0511314 | Interior, first floor, detail: door, Room #2 |
| 15 | SC_Beaufort County_Bldg 157_0511315 | Interior, first floor, detail: storage cage, Room #3 |
| 16 | SC_Beaufort County_Bldg 157_0511316 | Interior, first floor, detail: stair looking north |
| 17 | SC_Beaufort County_Bldg 157_0511317 | Interior, second floor, detail: newel post and stair railing, Room #5 |
| 18 | SC_Beaufort County_Bldg 157_0511318 | Interior, second floor, Room #4 looking northwest |
| 19 | SC_Beaufort County_Bldg 157_0511319 | Interior, second floor, Room #5 looking north |
| 20 | SC_Beaufort County_Bldg 157_0511320 | Interior, second floor, Room #6 looking southwest |

Photographic Documentation

Building 157, Dispatch Office, SHPO Site Number 5113

Marine Corps Recruit Depot Parris Island, Beaufort County, SC

Heather L. Robbins, NAVFAC Mid-Atlantic

06/2019

| | | |
|----|--|---|
| 21 | SC_Beaufort County_Bldg 157_0511321 | Interior, second floor, detail: door, Room #6 |
| 22 | SC_Beaufort County_Bldg 157_0511322 | Interior, second floor, corridor looking south |
| 23 | SC_Beaufort County_Bldg 157_0511323 | Context, streetscape looking northeast from Cape Gauffre Street |
| 24 | Beaufort County_Bldg 157_0511324 | Context, motor pool area, looking southwest |
| 25 | Beaufort County_Bldg 157_0511325 | Context, streetscape looking west from Cape Gauffre Street |
| 26 | Beaufort County_Bldg 157_0511326 | Context, streetscape looking east from Cape Gauffre Street |

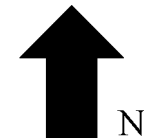
Photographic Documentation
Building 157, Dispatch Office, SHPO Site Number 5113
Marine Corps Recruit Depot Parris Island, Beaufort County, SC
Heather L. Robbins, NAVFAC Mid-Atlantic
06/2019

PHOTOGRAPH KEY – SITE PLAN – EXTERIOR & CONTEXT



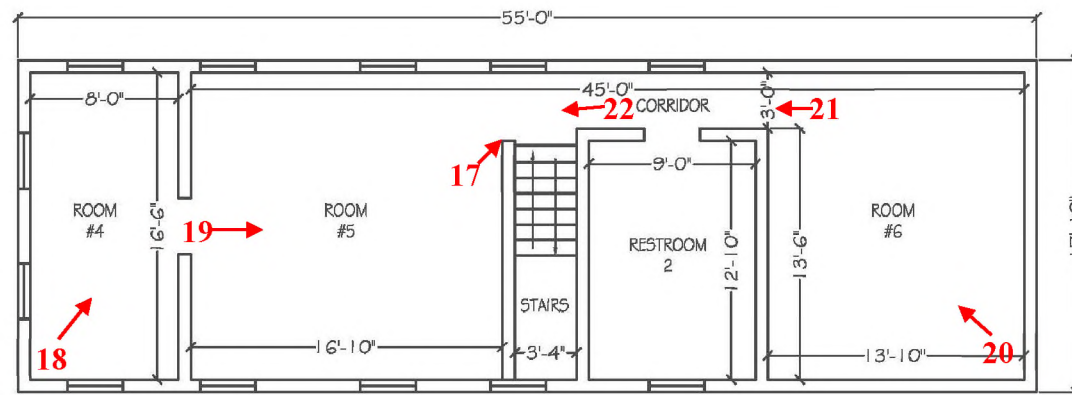
Not to scale

Note: buildings with metal roofs to the east and west of Building 157 as depicted in aerial are no longer extant



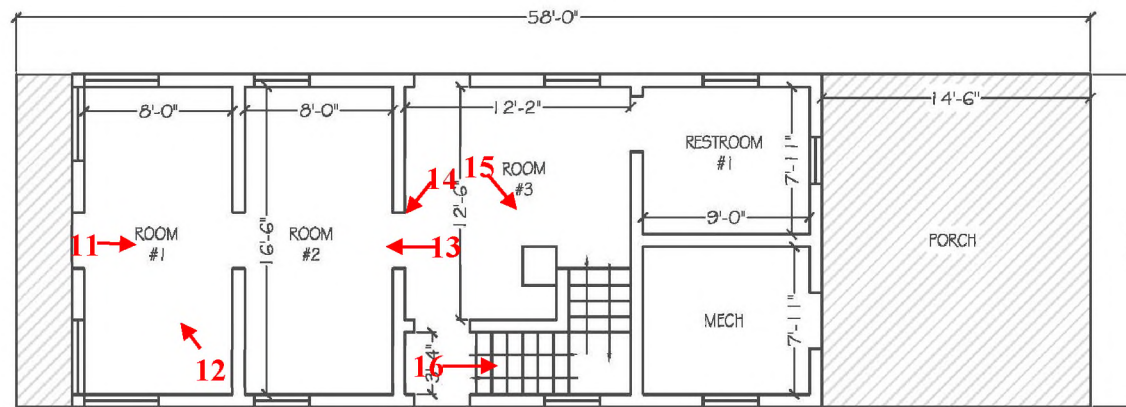
Photographic Documentation
Building 157, Dispatch Office, SHPO Site Number 5113
Marine Corps Recruit Depot Parris Island, Beaufort County, SC
Heather L. Robbins, NAVFAC Mid-Atlantic
06/2019

PHOTOGRAPH KEY – FLOOR PLANS – INTERIOR



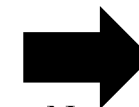
BUILDING 157

SECOND FLOOR PLAN



BUILDING 157

FIRST FLOOR PLAN



N

Not to scale

Photographic Documentation

Building 157, Dispatch Office, SHPO Site Number 5113

Marine Corps Recruit Depot Parris Island, Beaufort County, SC

Heather L. Robbins, NAVFAC Mid-Atlantic

06/2019

PHOTOGRAPHS – CONTACT SHEETS



SC_Beaufort County_Bldg 157_0511301



SC_Beaufort County_Bldg 157_0511302



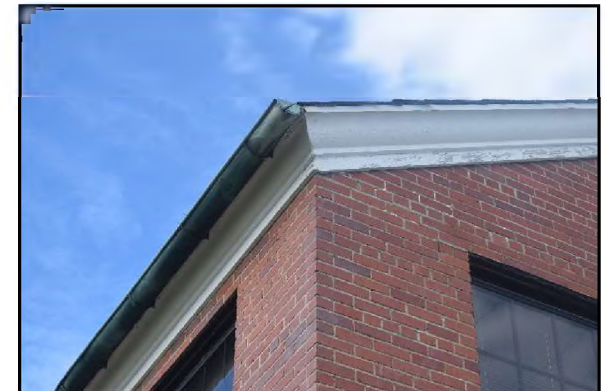
SC_Beaufort County_Bldg 157_0511303



SC_Beaufort County_Bldg 157_0511304



SC_Beaufort County_Bldg 157_0511305



SC_Beaufort County_Bldg 157_0511306

Photographic Documentation

Building 157, Dispatch Office, SHPO Site Number 5113

Marine Corps Recruit Depot Parris Island, Beaufort County, SC

Heather L. Robbins, NAVFAC Mid-Atlantic

06/2019



SC_Beaufort County_Bldg 157_0511307



SC_Beaufort County_Bldg 157_0511308



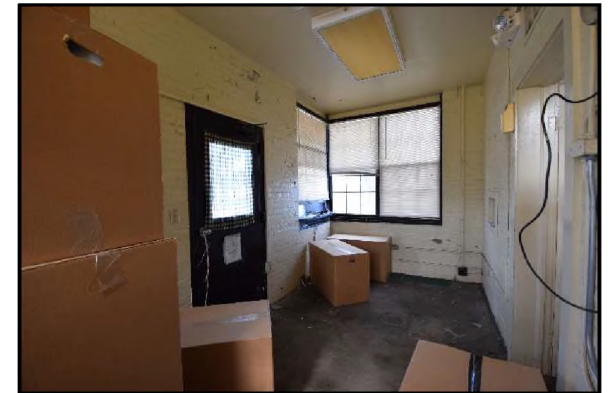
SC_Beaufort County_Bldg 157_0511309



SC_Beaufort County_Bldg 157_0511310



SC_Beaufort County_Bldg 157_0511311



SC_Beaufort County_Bldg 157_0511312

Photographic Documentation

Building 157, Dispatch Office, SHPO Site Number 5113

Marine Corps Recruit Depot Parris Island, Beaufort County, SC

Heather L. Robbins, NAVFAC Mid-Atlantic

06/2019



SC_Beaufort County_Bldg 157_0511313



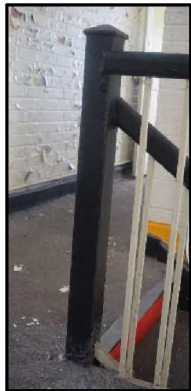
SC_Beaufort County_Bldg 157_0511314



SC_Beaufort County_Bldg 157_0511315



SC_Beaufort County_Bldg 157_0511316



SC_Beaufort County_Bldg 157_0511317



SC_Beaufort County_Bldg 157_0511318



SC_Beaufort County_Bldg 157_0511319

Photographic Documentation

Building 157, Dispatch Office, SHPO Site Number 5113

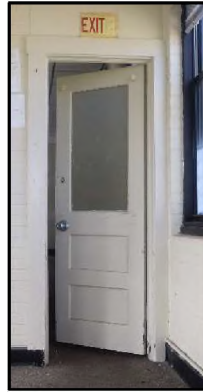
Marine Corps Recruit Depot Parris Island, Beaufort County, SC

Heather L. Robbins, NAVFAC Mid-Atlantic

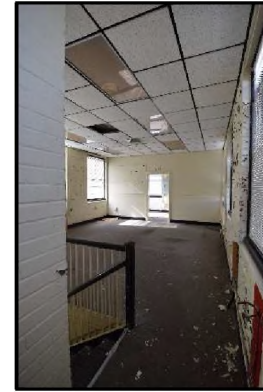
06/2019



SC_Beaufort County_Bldg 157_0511320



SC_Beaufort County_Bldg 157_0511321 SC_Beaufort County_Bldg 157_0511322



SC_Beaufort County_Bldg 157_0511323



SC_Beaufort County_Bldg 157_0511324



SC_Beaufort County_Bldg 157_0511325

Photographic Documentation

Building 157, Dispatch Office, SHPO Site Number 5113

Marine Corps Recruit Depot Parris Island, Beaufort County, SC

Heather L. Robbins, NAVFAC Mid-Atlantic

06/2019



SC_Beaufort County_Bldg 157_0511326

