

SOUTH CAROLINA
DEPARTMENT OF LABOR, LICENSING AND REGULATION
ORGANIZATIONAL CHART

APRIL 2017

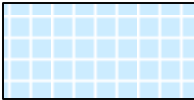
**SOUTH CAROLINA
DEPARTMENT OF LABOR, LICENSING AND REGULATION
ORGANIZATIONAL CHARTS**

Pink Diamond



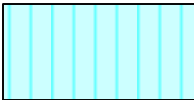
TERI Employee

Light Blue Square



**Employee returned after TERI
or Retirement**

Turquoise Vertical Stripe



**Employee eligible to retire
within 5 years by service
or age**

White Solid Red Letters



**Vacant Position-Vacancy
Date**

Yellow Diagonal Stripe



Temporary Employee

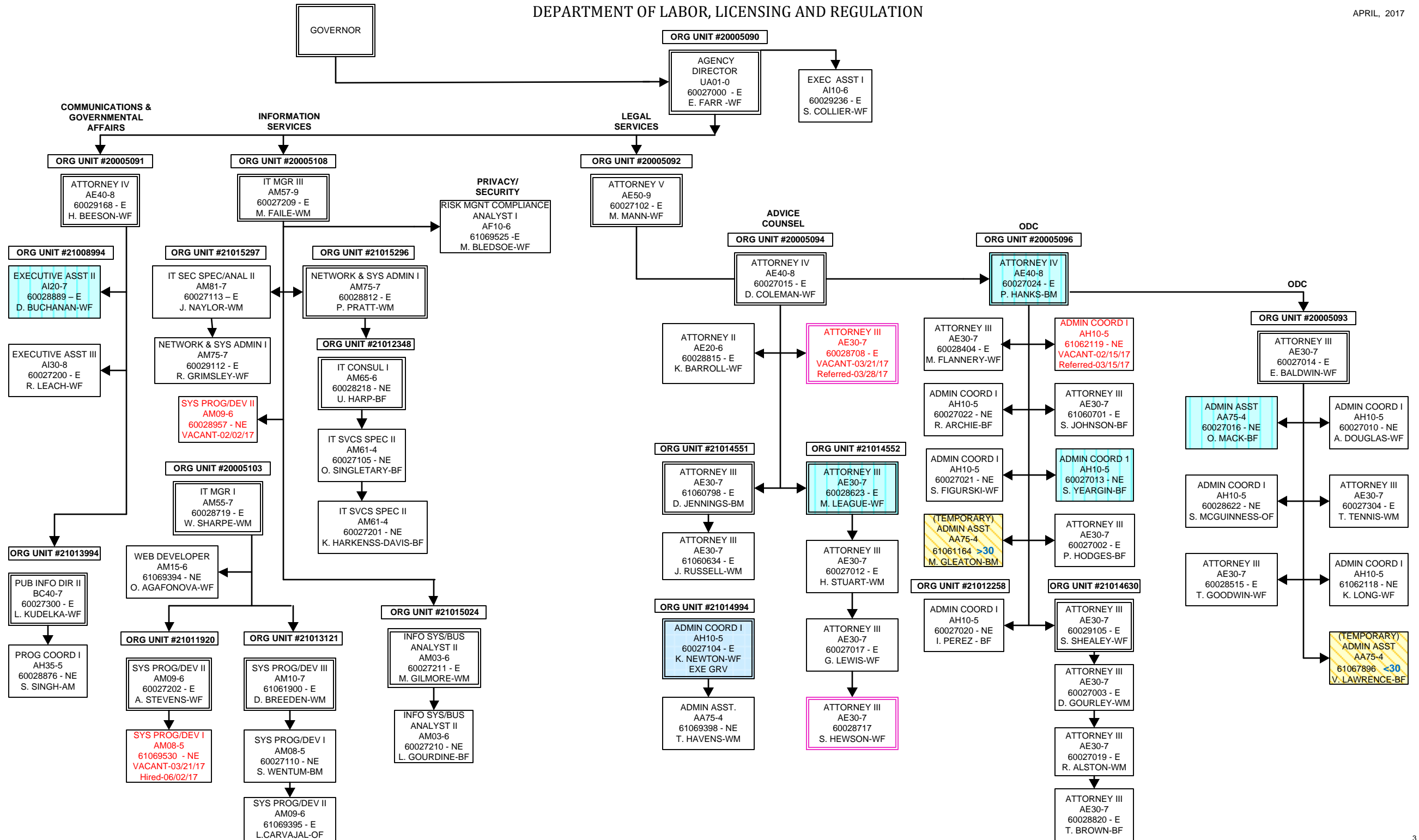
Dark Pink Outline

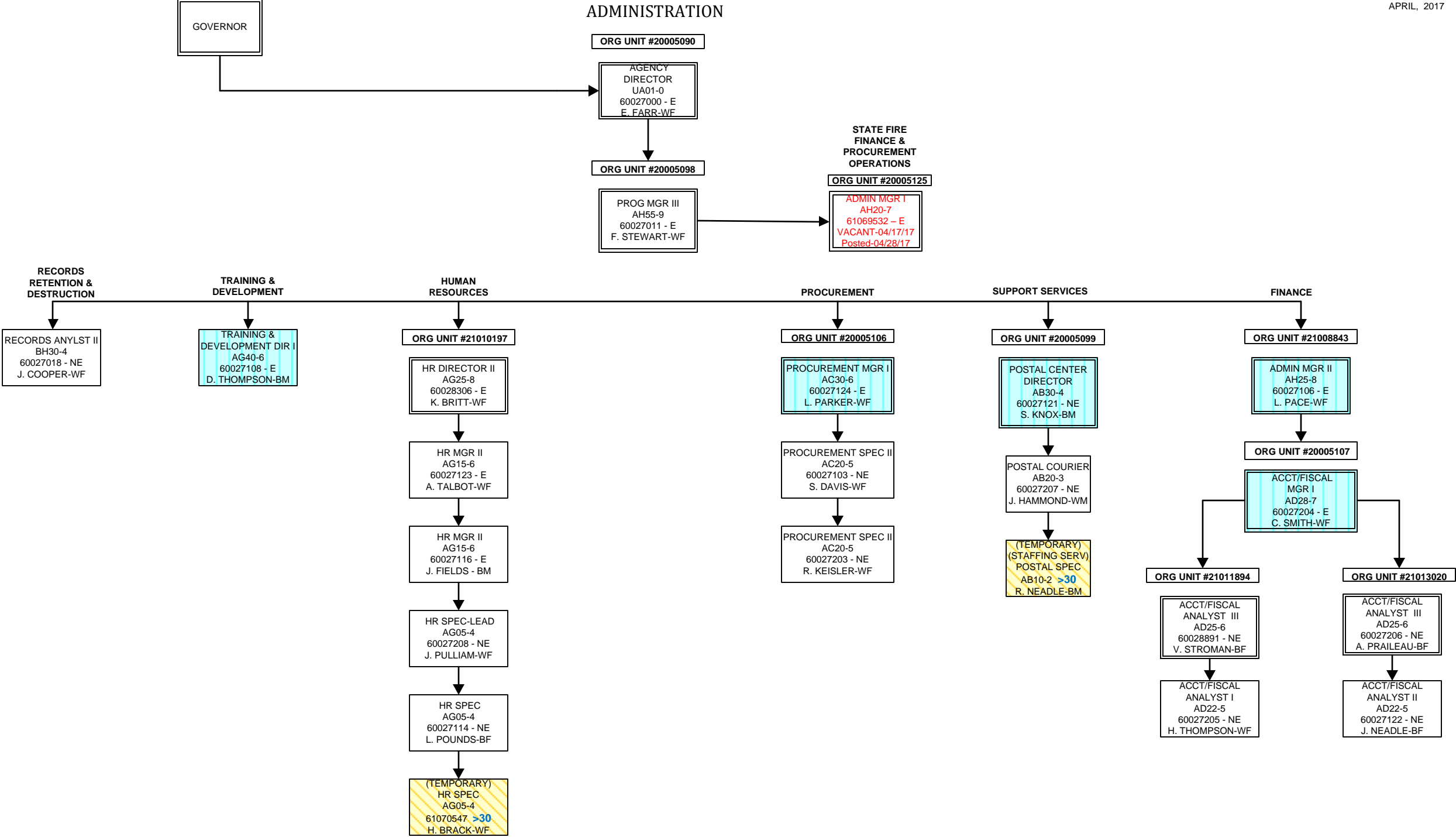


Borrowed position

DEPARTMENT OF LABOR, LICENSING AND REGULATION

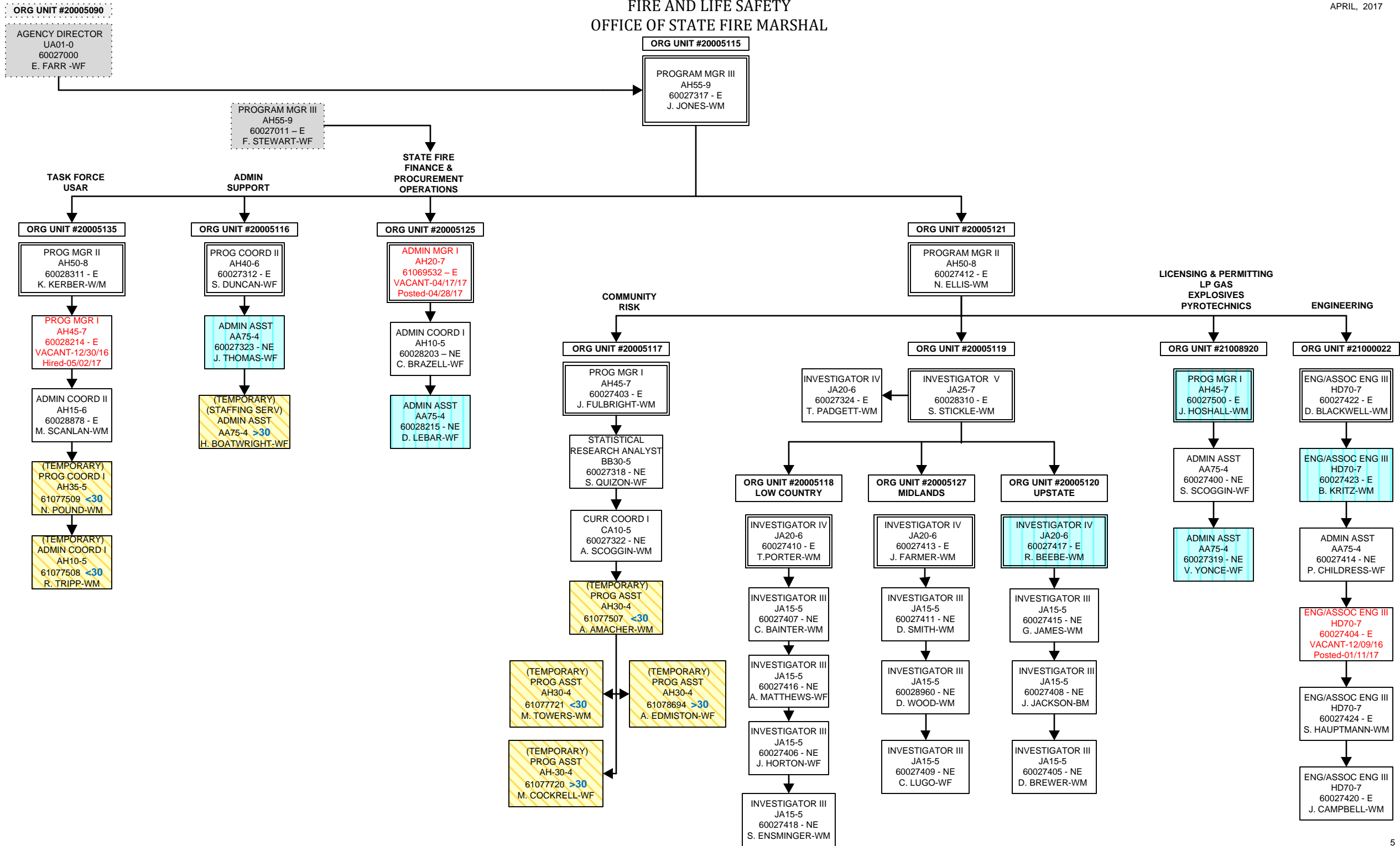
APRIL, 2017





FIRE AND LIFE SAFETY
OFFICE OF STATE FIRE MARSHAL

APRIL, 2017



FIRE AND LIFE SAFETY
FIRE ACADEMY

APRIL, 2017

ORG UNIT #20005115

PROGRAM MGR III
AH55-9
60027317 - E
J. JONES-WM

ORG UNIT #20005128

ACTING
PROG MGR II
AH50-8
60028805 - E
P. RUSSELL

GROUND
S &
MAINTENANCE

CURRICULUM
ACCREDITATIONS

REGIONAL
TRAINING

EMS
COORDINATOR

ORG UNIT #20005124

ENG/ASSOC ENG II
HD65-6
60028202 - E
VACANT-12/12/16
Referred-04/17/17

TRADES SPEC IV
KC40-4
60028123 - NE
J. KESTER-WM

TRADES SPEC IV
KC40-4
60028219 - NE
M. MONROE-WM

TRADES SPEC V
KC50-5
60028216 - NE
J. GRIGGS-WM

TRADES SPEC IV
KC40-4
60028201 - NE
R. MOORE-WM

(TEMPORARY)
TRADES SPEC IV
KC40-4
61078305 <30
C. OWEN-WM

(TEMPORARY)
TRADES SPEC IV
KC40-4
61078306
D. RAWLS-WM

(TEMPORARY)
FSO II
JC70-4
1 TEMP

ORG UNIT #21009882

PROG MGR I
AH45-7
60028207 - E
G. SPINKS-WM

ADMIN COORD I
AH10-5
60028222 - NE
K. WHITE-BF

(TEMPORARY)
FSO II
JC70-4
1 TEMP

ORG UNIT #21000446

PROG COORD II
AH40-6
60028212 - E
C. BENNETT-WM

(TEMPORARY)
EDU SPEC
CA30-4
61077772 <30
D. HANSON-WM

(TEMPORARY)
EDU SPEC
CA30-4
61077773 <30
N. MANSFIELD-WM

(TEMPORARY)
EDU SPEC
CA30-4
61077770 <30
Y. MUHAMMAD-BM

ORG UNIT #20005123

CURR COORD II
CA20-5
60028302 - E
B. WATTERS-WF

(TEMPORARY)
FSO II
JC70-4
A. ESPOSITO-WM

ORG UNIT #21012579

PROG COORD I
AH35-5
60028209 - NE
R. SIMPSON-WM

MEDIA RESRC
SPEC II
BG60-4
60028304 - NE
J. BLACK-WM

(TEMPORARY)
PRINTING MGR I
BD30-4
61077742 >30
F. BRANDT-WM

(TEMPORARY)
MEDIA SPEC II
BG60-4
61077743 >30
A. HIGHLAND-BF

(TEMPORARY)
MEDIA SPEC II
BG60-4
61077744 >30
W. RENKIN-WM

ORG UNIT #20005122

ADMIN COORD I
AH10-5
60028217 - NE
S. BUSH-BF

ADMIN ASST
AA75-4
60028303 - NE
K. RIVERA-WF

ADMIN ASST
AA75-4
60028213 - NE
G. EVANS-BF

ADMIN ASST
AA75-4
60028211 - NE
A. ADAMS-BF

ORG UNIT #20005131

FOOD SERV SPEC V
KB25-5
60028224 - NE
C. JERMSTAD-WM

BLDG/GRDS SPEC III
KA15-3
60028210 - NE
S. WILLIAMS-BM

(TEMPORARY)
FOOD SVC SPEC III
KB15-3 <30
D. CREPAEU-WM

ORG UNIT #20005129

PROG COORD I
AH35-5
60028221 - NE
D. DUNCAN-WM

ADMIN ASST
AA75-4
60028220 - NE
C. BAKER-WF

(TEMPORARY)
FSO II
JC70-4
31 TEMPS

ORG UNIT #21001228

PROG COORD I
AH35-5
60028206 - NE
E. ADAMS - WM

ADMIN ASST
AA75-4
60028301 - NE
A. WILLIAMSON-WF

(TEMPORARY)
FSO II
JC70-4
17 TEMPS

ORG UNIT #21011927

PROG COORD I
AH35-5
60028122 - NE
J. MCCARLEY-WM
EXEM GRV

(TEMPORARY)
FSO II
JC70-4
18 TEMPS

ORG UNIT #21011926

PROG COORD I
AH35-5
60028307 - NE
M. TURNER-WF

(TEMPORARY)
FSO II
JC70-4
9 TEMPS

ORG UNIT #20005132

PROG COORD I
AH35-5
60028300 - NE
B. CASSIDY-WM
EXEM GRV

ADMIN ASST
AA75-4
60028205 - NE
C. CANUP-WF

(TEMPORARY)
FSO II
JC70-4
22 TEMPS

(TEMPORARY)
FSO II
JC70-4
61078720 <30
61078721 <30
61078722 <30
61078723 <30
61078725 <30
61078726 <30
61078727 <30
61078728 <30
61078729 <30
VACANT-02/02/17
Referred-03/06/17

ONSITE
ACADEMY
TRAINING

ORG UNIT #20005126

PROG COORD II
AH40-6
60028204 - E
R. BUSBY-WM

PROG COORD II
AH40-6
60028223 - E
T. BROWN-BM

PROG COORD I
AH35-5
60028121 - NE
M. REGAL-WM

PROG COORD I
AH35-5
60028200 - NE
D. CROSSLAND-WM
EXEM GRV

(TEMPORARY)
FSO II
JC70-4
12 TEMPS

PROG COORD I
AH35-5
60028208 - NE
S. DAVIS-WM

PROG COORD I
AH35-5
60028952 - NE
K. WATSON-UN

(TEMPORARY)
FSO II
JC70-4
61077794 <30
T.SHARPE-WM

(TEMPORARY)
FSO II
JC70-4
42 TEMPS

ORG UNIT #21009052

PROG COORD I
AH35-5
60028124 - NE
M. GEORGE-WM
EXEM GRV

ORG UNIT #21014468

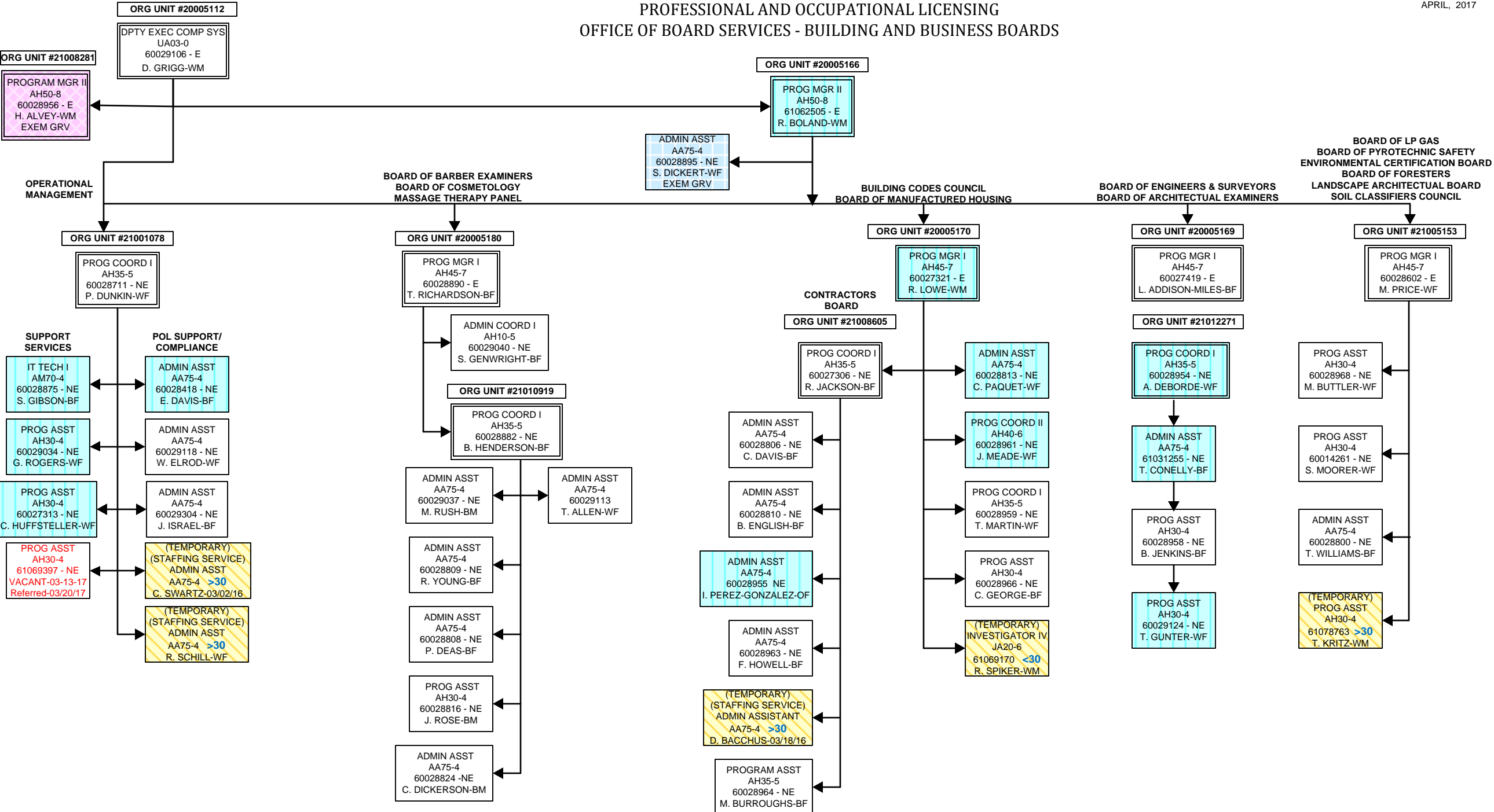
PROG MGR I
AH45-7
60027120 - E
T. WOJCIK-WM

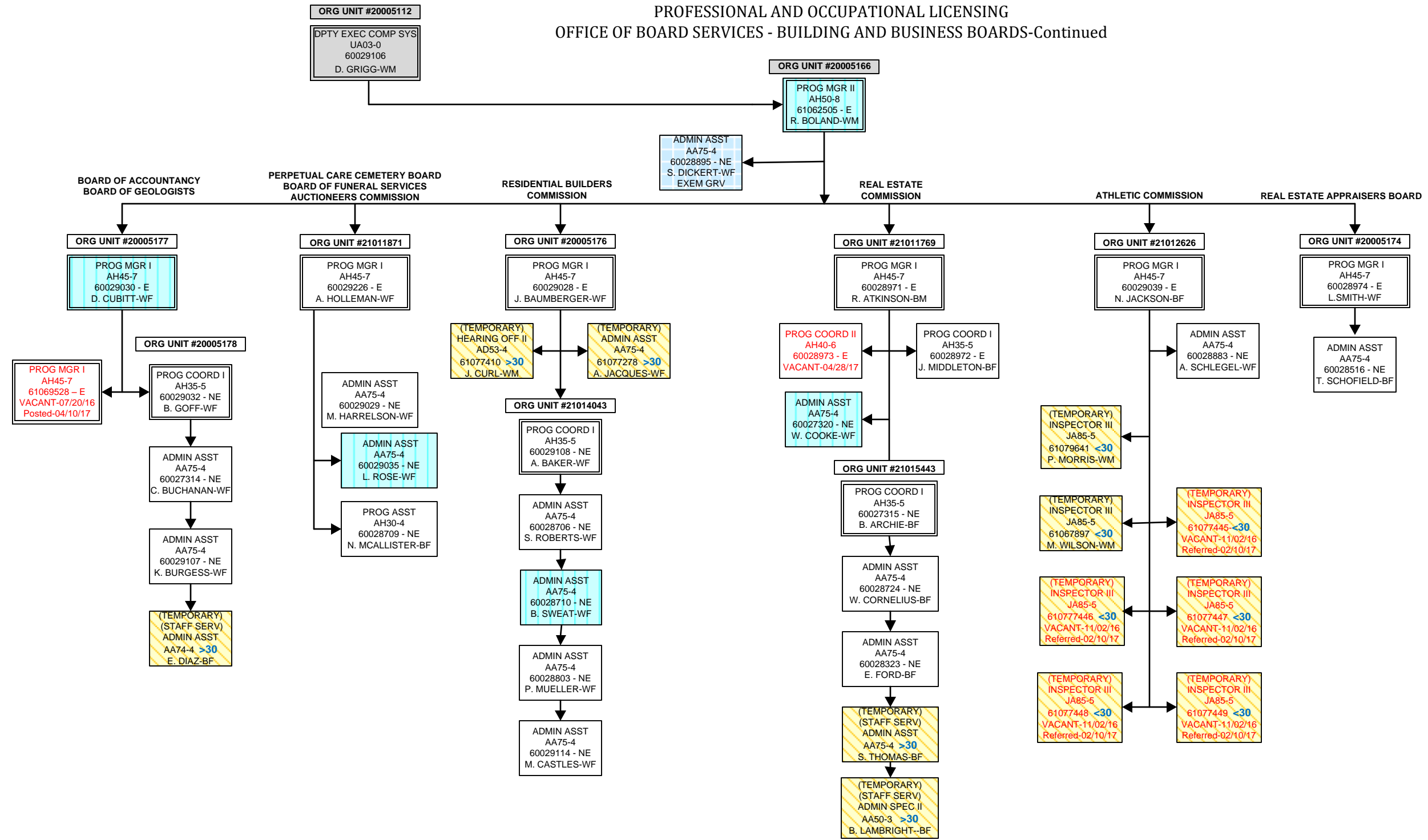
PROG COORD II
AH40-6
60027421 - NE
J. MCCONNELL-WM

(TEMPORARY)
PROG COORD I
AH35-5
61069161 <30
C. GAINEY-WM

(TEMPORARY)
INSTRU/TRAIN COORD II
AG35-5
61077065 <30
A. SIMMONS-WM

PROFESSIONAL AND OCCUPATIONAL LICENSING
OFFICE OF BOARD SERVICES - BUILDING AND BUSINESS BOARDS

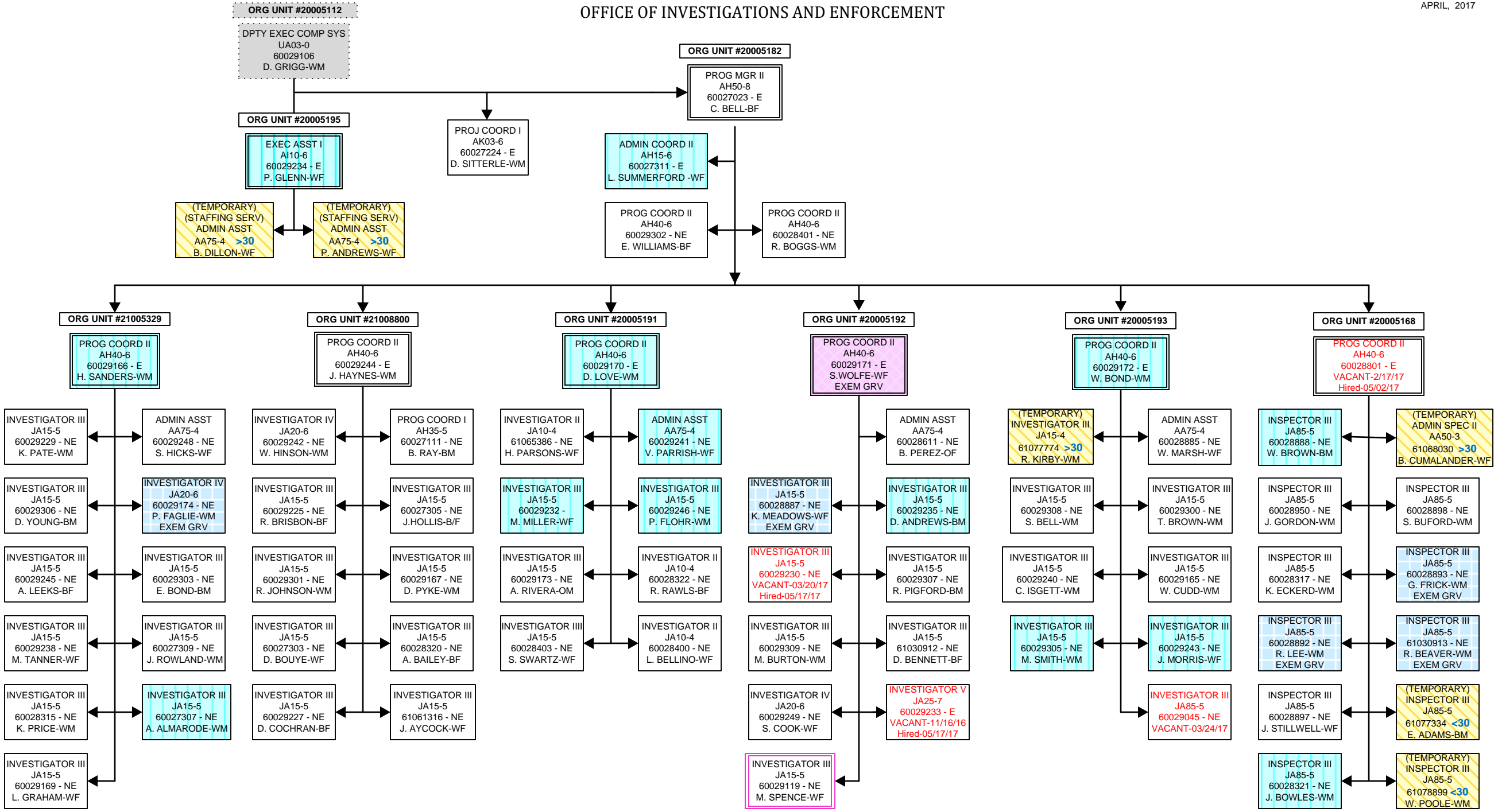






OFFICE OF INVESTIGATIONS AND ENFORCEMENT

APRIL, 2017



DIVISION OF LABOR

APRIL, 2017

