



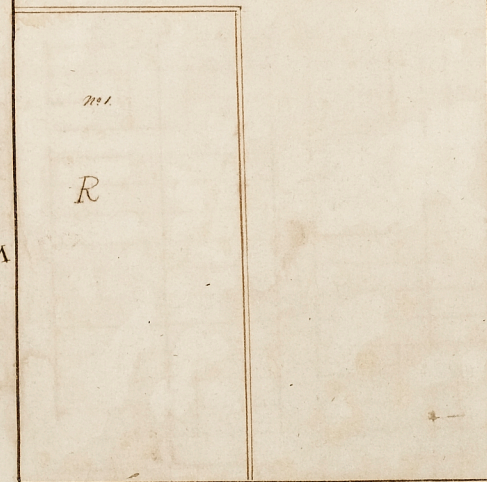
A Table of References

A	A square in the center of the	450
B	Town measuring each way	
C	King Street	66
D	Market Street	66
E	Gordon Street	90
F	Church Street	90
G	Market Street	90
H	Broad Street	90
I	Littleton Street	90
J	Fair Street	90
K		
L		
M		

These Parts marked thus (N^o 1) are Reserved for the use of the Public & Desc^d as follows

N For the Church 330 6 330
 O For the Court House it is Built 132 132
 P For the Scale it is Built 198 165
 Q For the Market 198 165
 R For the Fair 1050 525

These Parts marked thus (N^o 2) are depending



A Plan of the Town of Camden Craven County South Carolina
 Containing 309 Acres & 22 Acres of the Public Land

Abstracted from the original Plan of J. H. Pillingham