
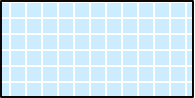
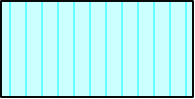



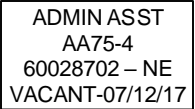
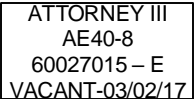


SOUTH CAROLINA  
DEPARTMENT OF LABOR, LICENSING AND REGULATION  
ORGANIZATIONAL CHART

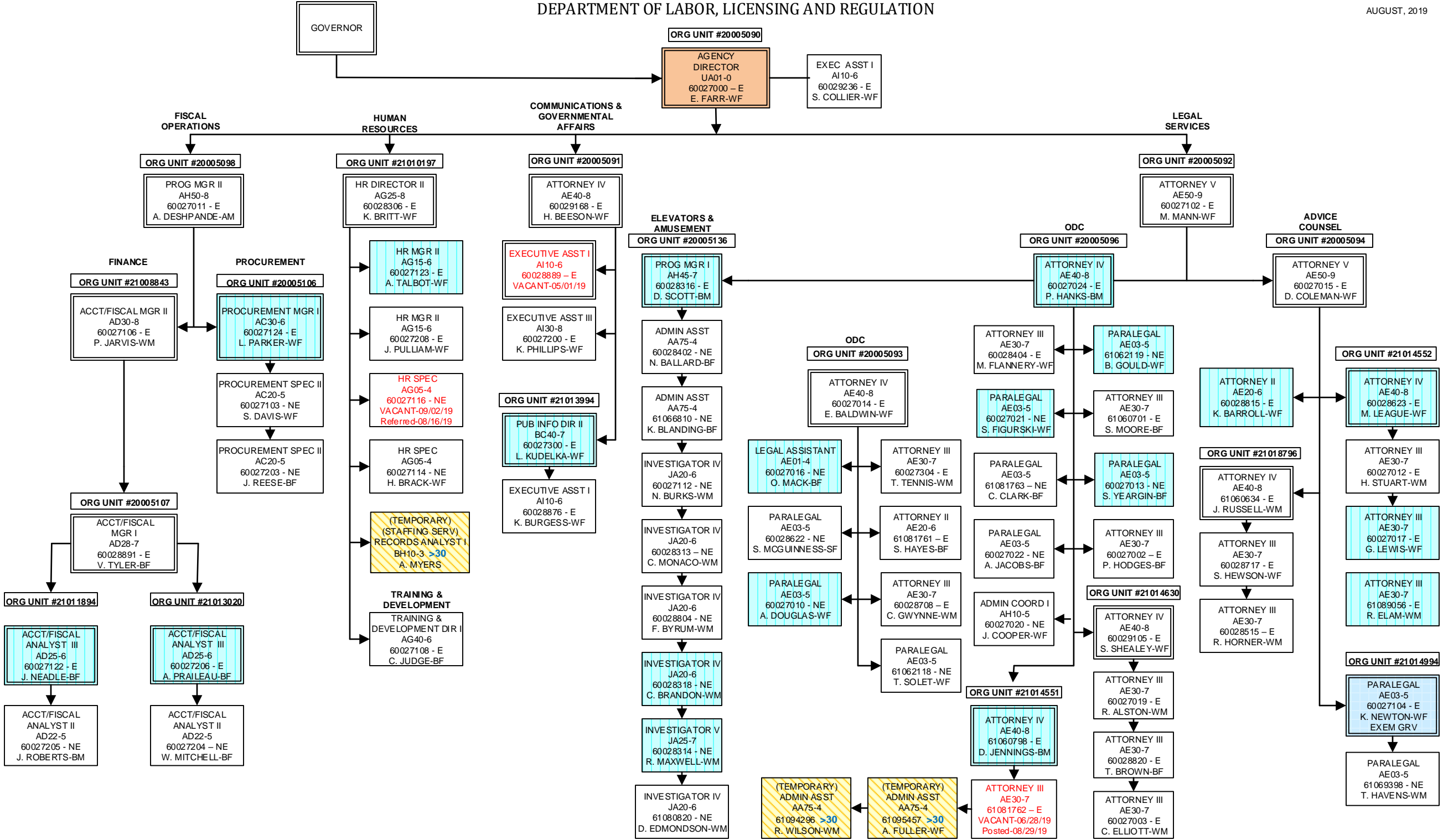
AUGUST 2019

SOUTH CAROLINA  
DEPARTMENT OF LABOR, LICENSING AND REGULATION  
ORGANIZATIONAL CHARTS

Light Orange Square		Employee Exempt from Grievance
Light Blue Square		Employee returned after TERI or Retirement; Exempt Grv
Turquoise Vertical Stripe		Employee eligible to retire within 5 years by service or age
White Solid Red Letters		Vacant Position-Vacancy Date
Yellow Diagonal Stripe		Temporary Employee
Dark Pink Outline		Borrowed position
NE Designation		Non-exempt position
E Designation		Exempt position

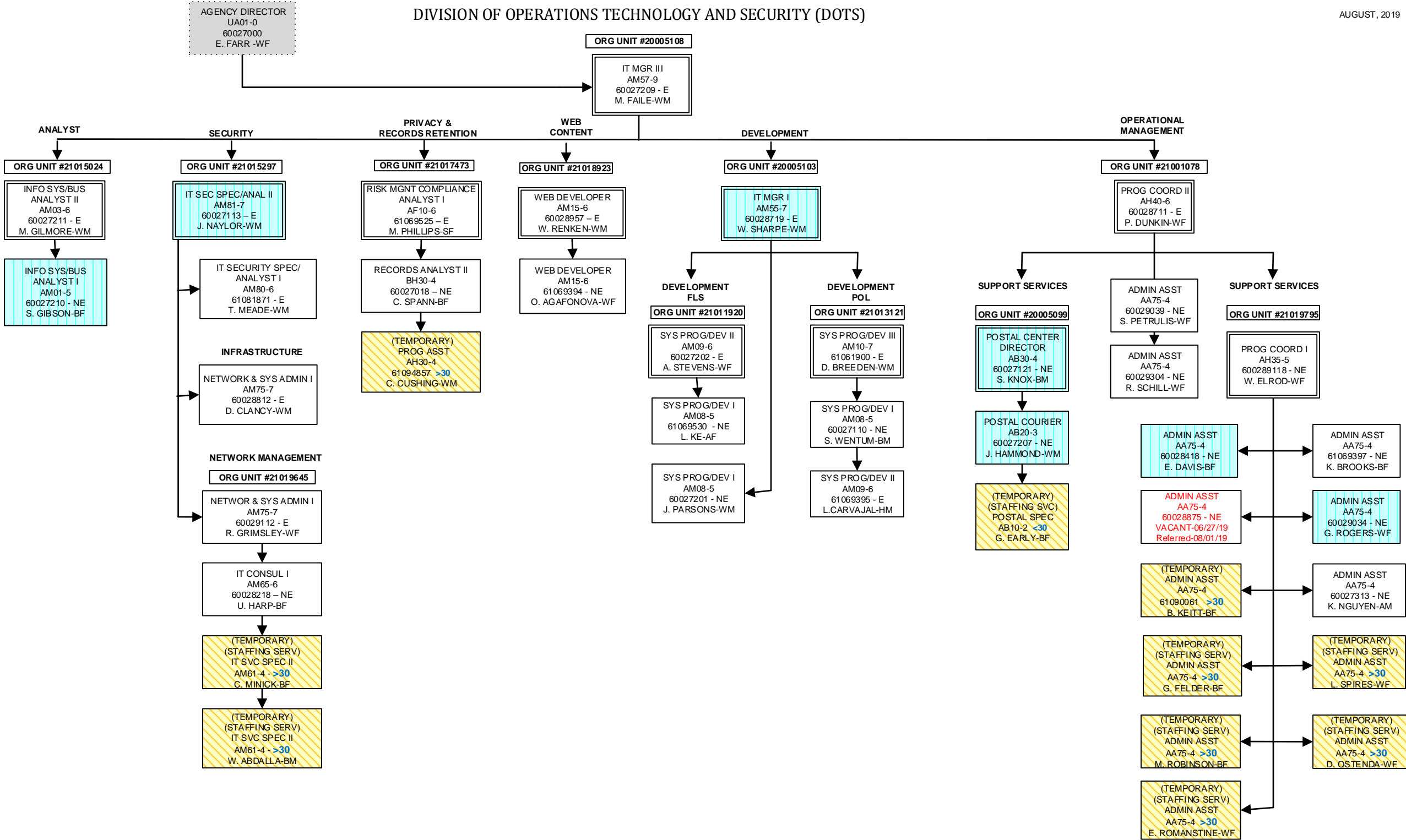
DEPARTMENT OF LABOR, LICENSING AND REGULATION

AUGUST, 2019



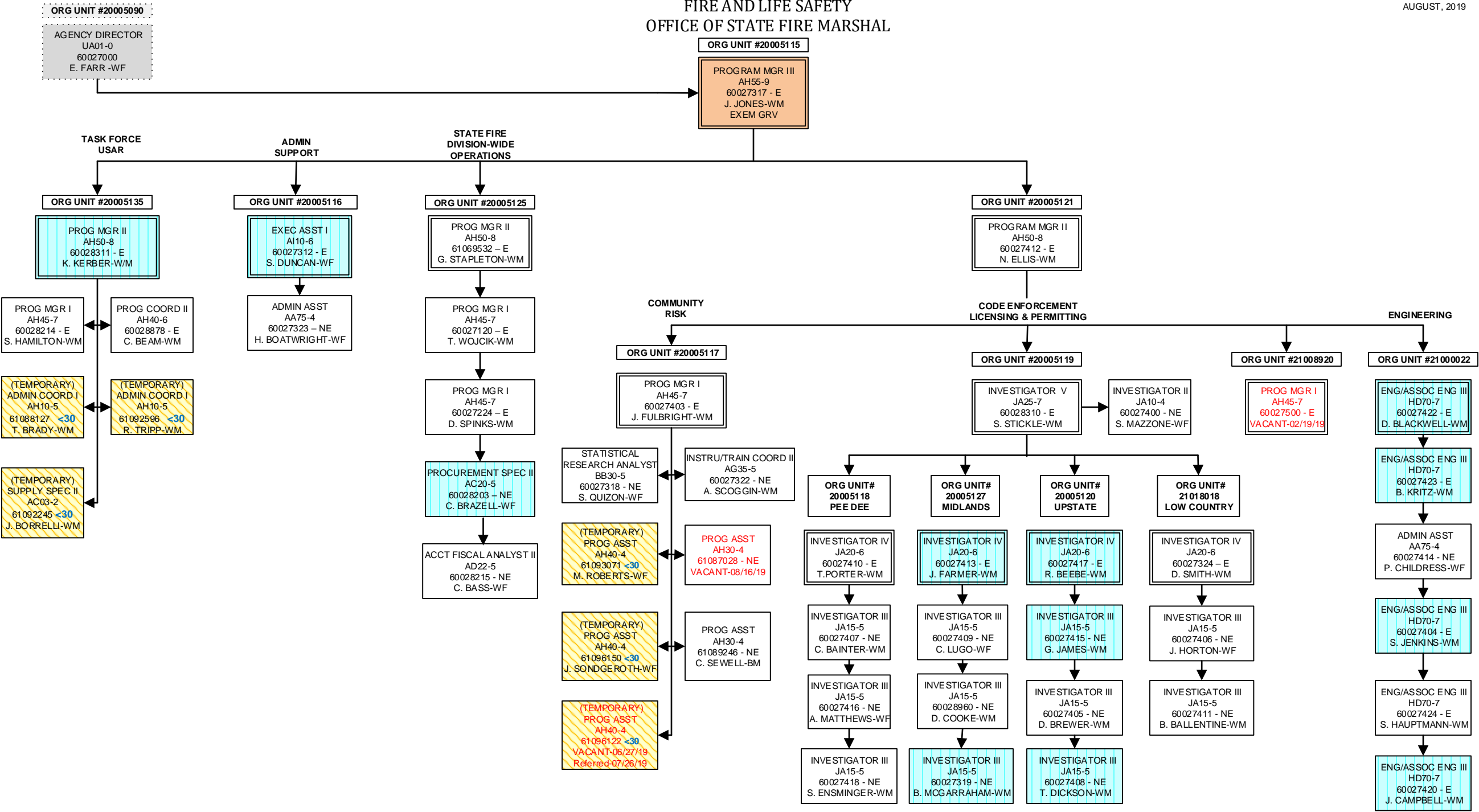
DIVISION OF OPERATIONS TECHNOLOGY AND SECURITY (DOTS)

AUGUST, 2019



FIRE AND LIFE SAFETY  
OFFICE OF STATE FIRE MARSHAL

AUGUST, 2019



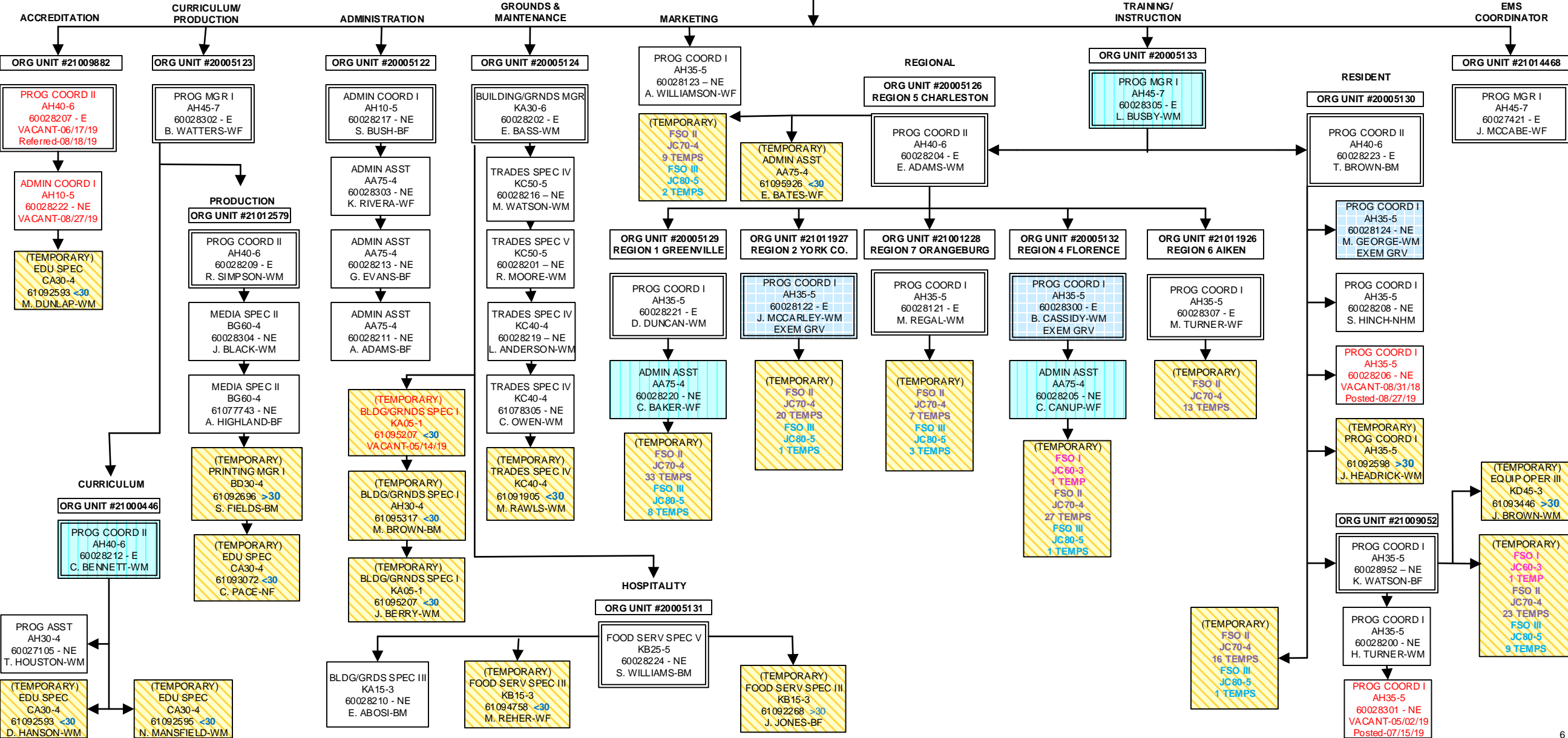
FIRE AND LIFE SAFETY  
FIRE ACADEMY

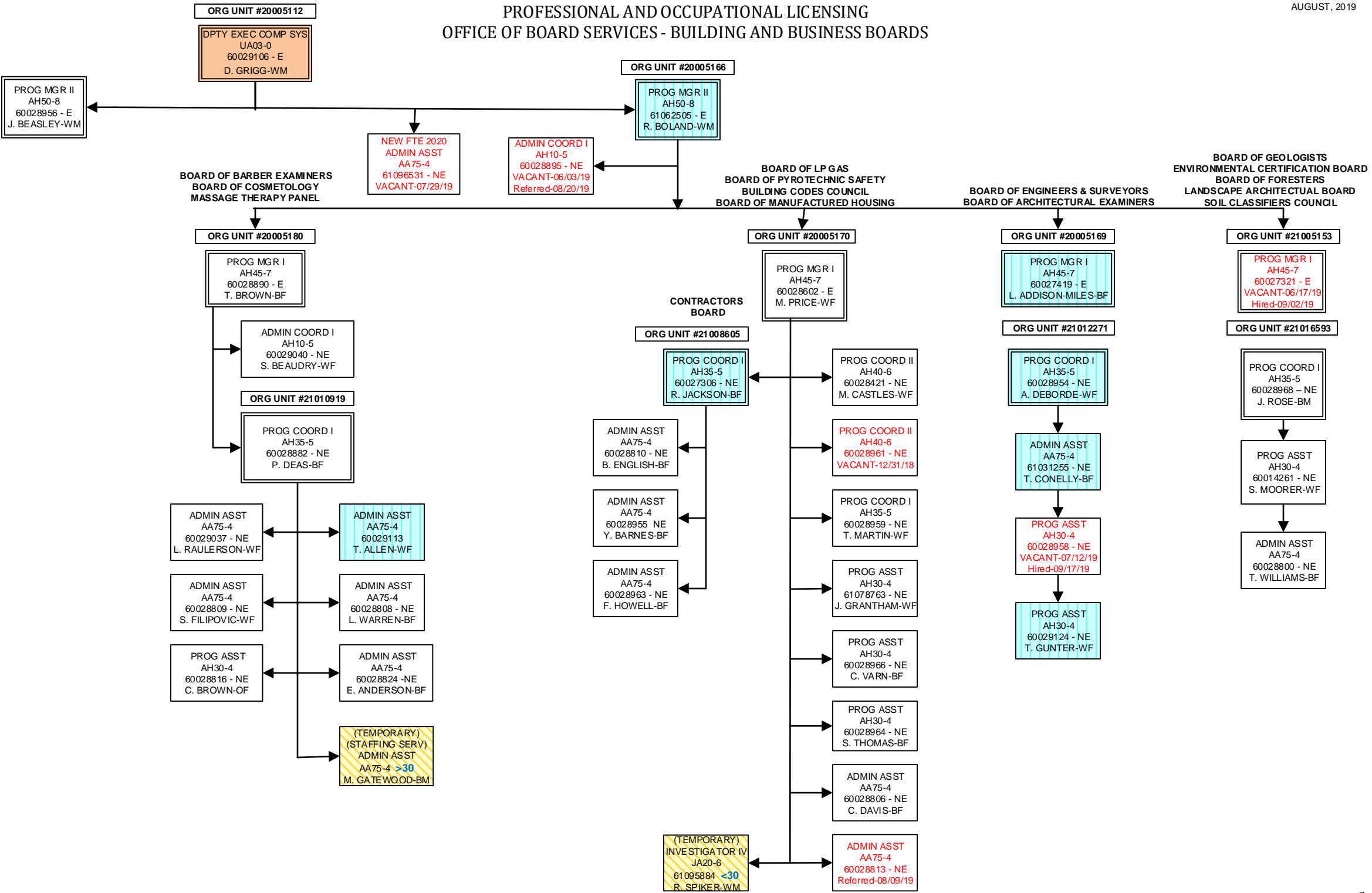
ORG UNIT #20005115

PROGRAM MGR III  
AH55-9  
60027317 - E  
J. JONES-WM

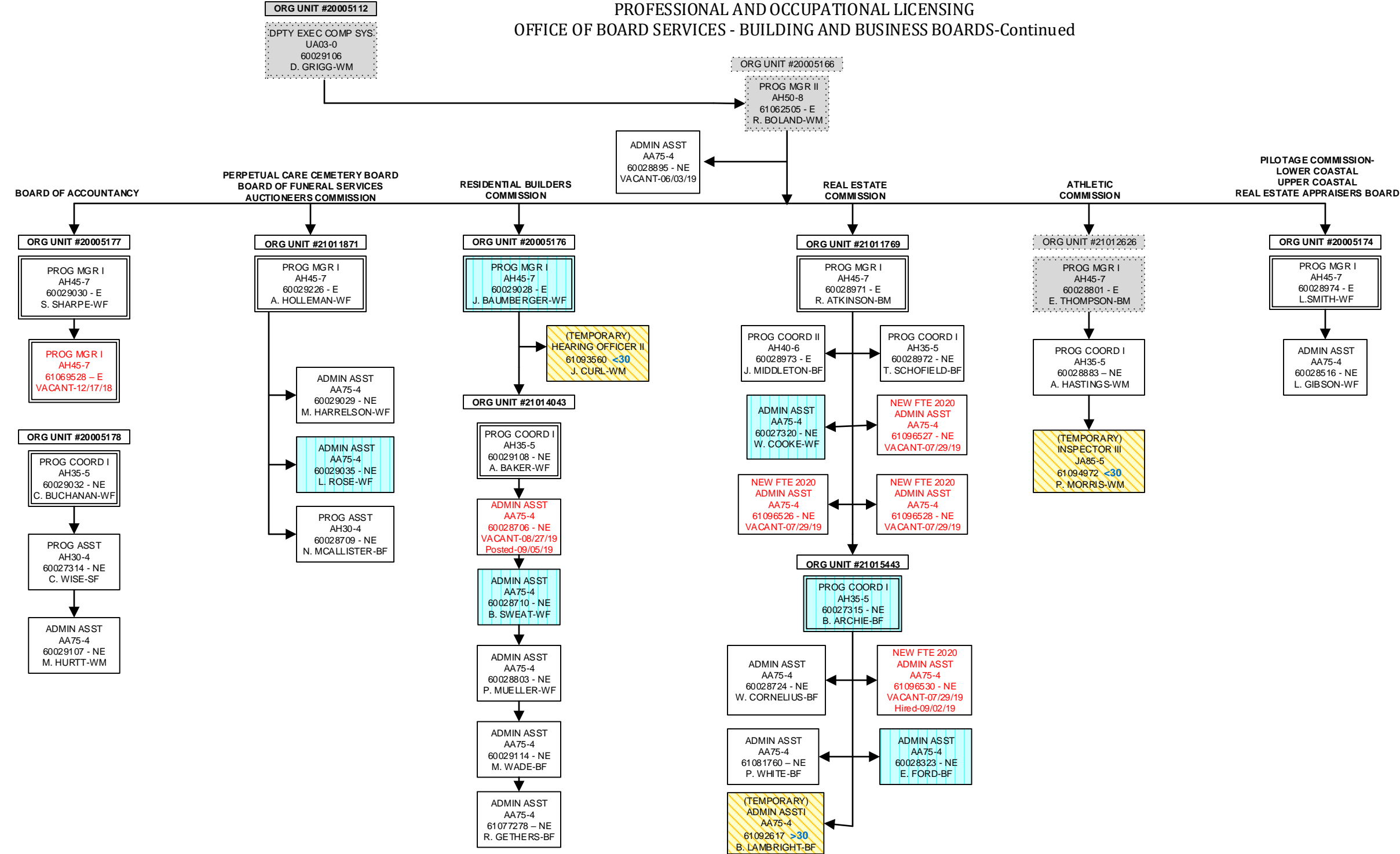
ORG UNIT #20005128

PROG MGR II  
AH50-8  
60028805 - E  
D. RAY-WM



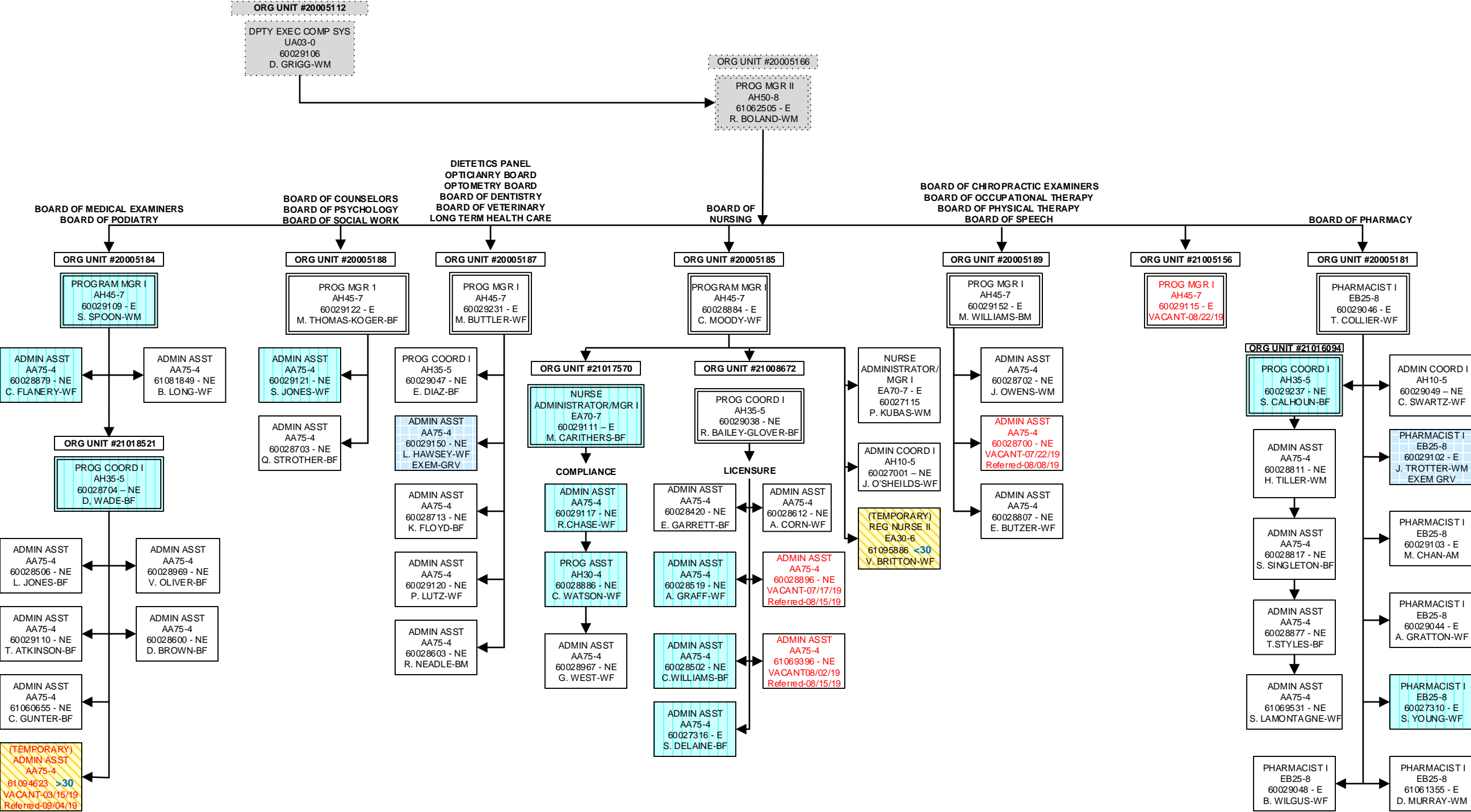


PROFESSIONAL AND OCCUPATIONAL LICENSING  
OFFICE OF BOARD SERVICES - BUILDING AND BUSINESS BOARDS-Continued





OFFICE OF BOARD SERVICES  
HEALTH AND MEDICALLY RELATED BOARDS



OFFICE OF INVESTIGATIONS AND ENFORCEMENT

