

SOUTH CAROLINA  
DEPARTMENT OF LABOR, LICENSING AND REGULATION  
ORGANIZATIONAL CHART

MAY 2021

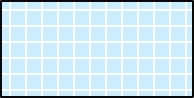
**SOUTH CAROLINA  
DEPARTMENT OF LABOR, LICENSING AND REGULATION  
ORGANIZATIONAL CHARTS**

Light Orange Square



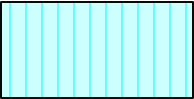
**Employee Exempt from Grievance**

Light Blue Square



**Employee returned after TERI  
or Retirement; Exempt Grv**

Turquoise Vertical Stripe



**Employee eligible to retire  
within 5 years by service  
or age**

White Solid Red Letters



**Vacant Position-Vacancy  
Date**

Yellow Diagonal Stripe



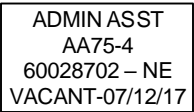
**Temporary Employee**

Dark Pink Outline



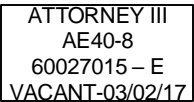
**Borrowed position**

NE Designation



**Non-exempt position**

E Designation



**Exempt position**

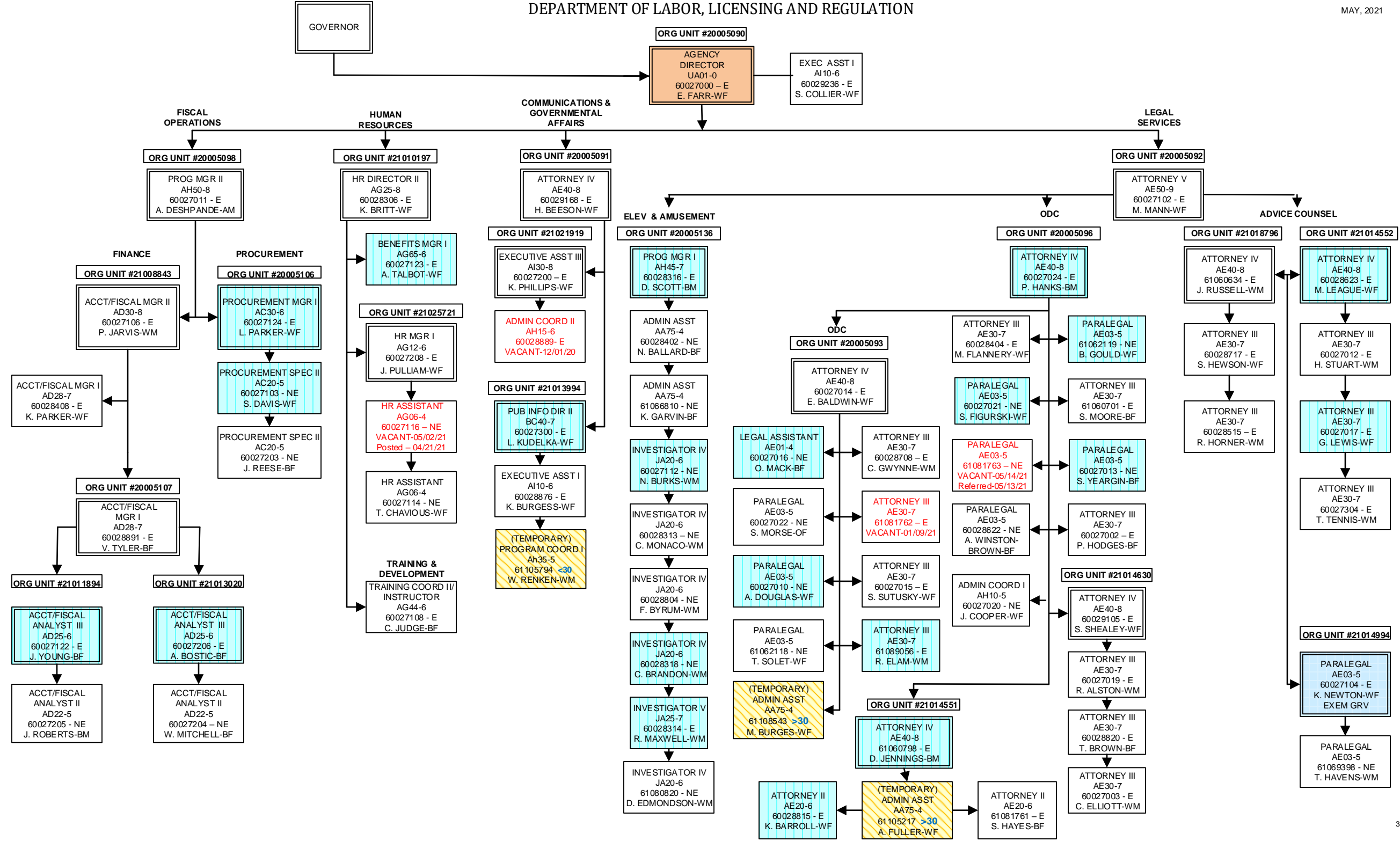
Purple Diagonal  
Stripe



**Two-Week Break**

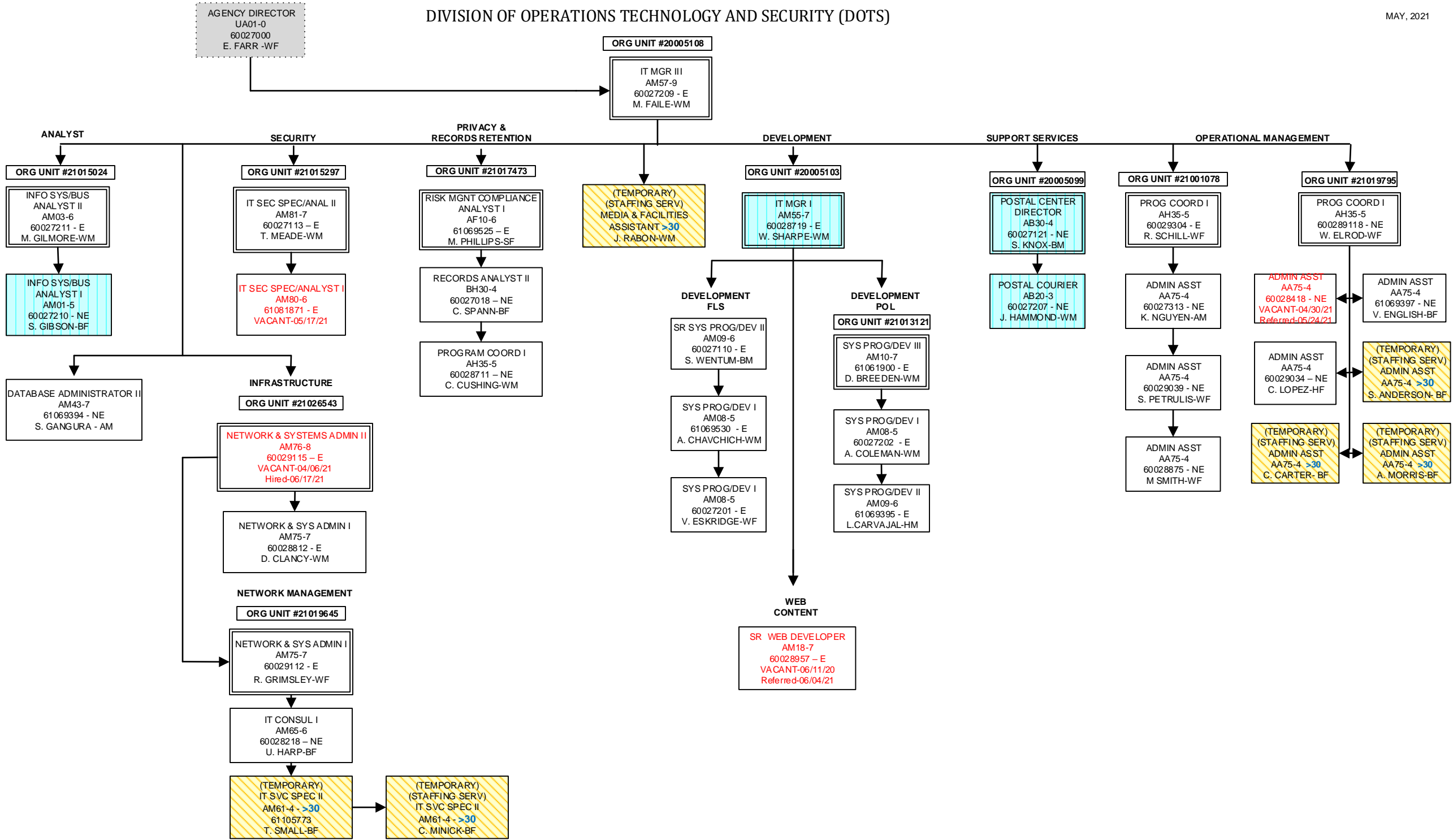
DEPARTMENT OF LABOR, LICENSING AND REGULATION

MAY, 2021



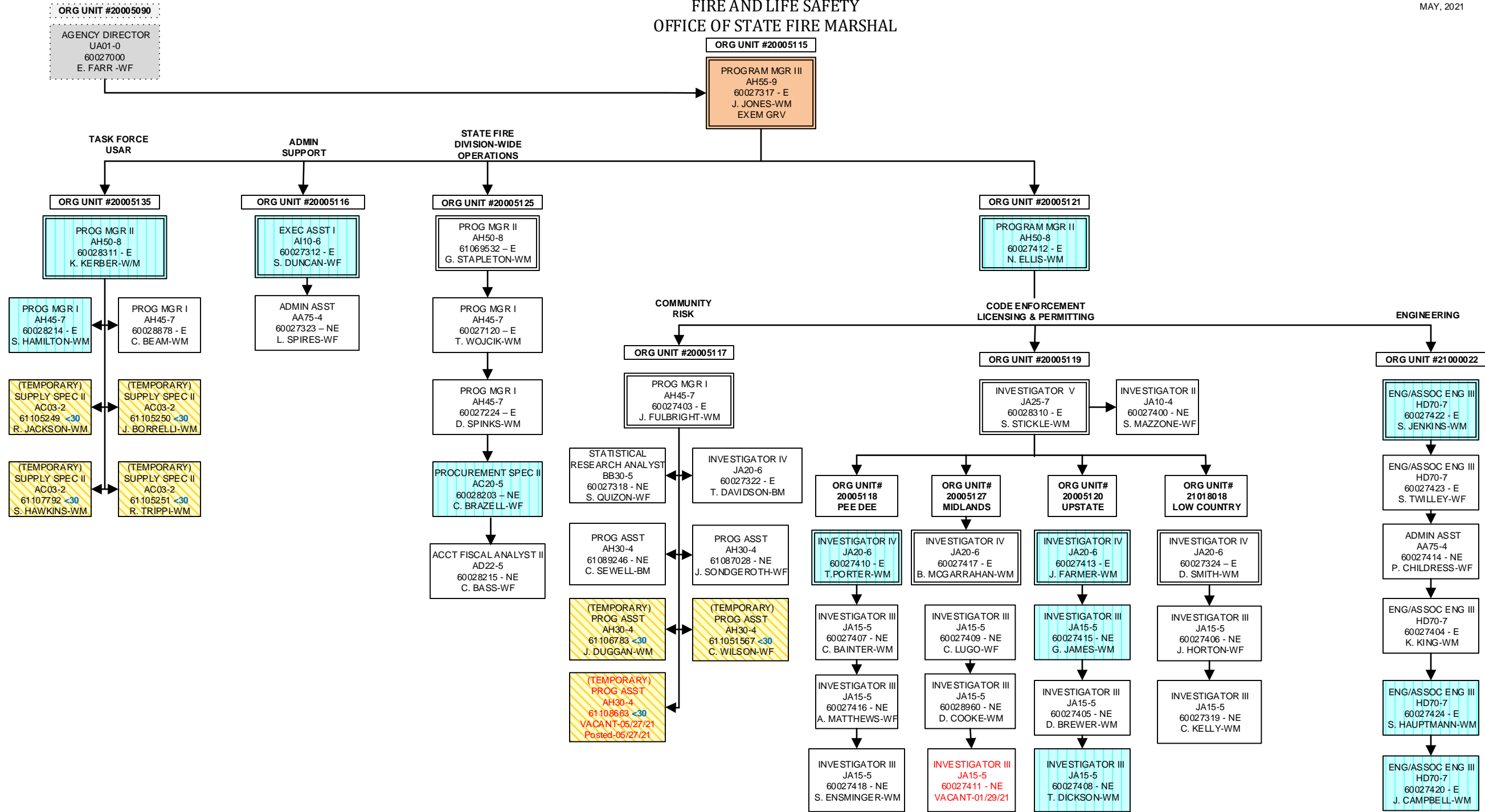
DIVISION OF OPERATIONS TECHNOLOGY AND SECURITY (DOTS)

MAY, 2021



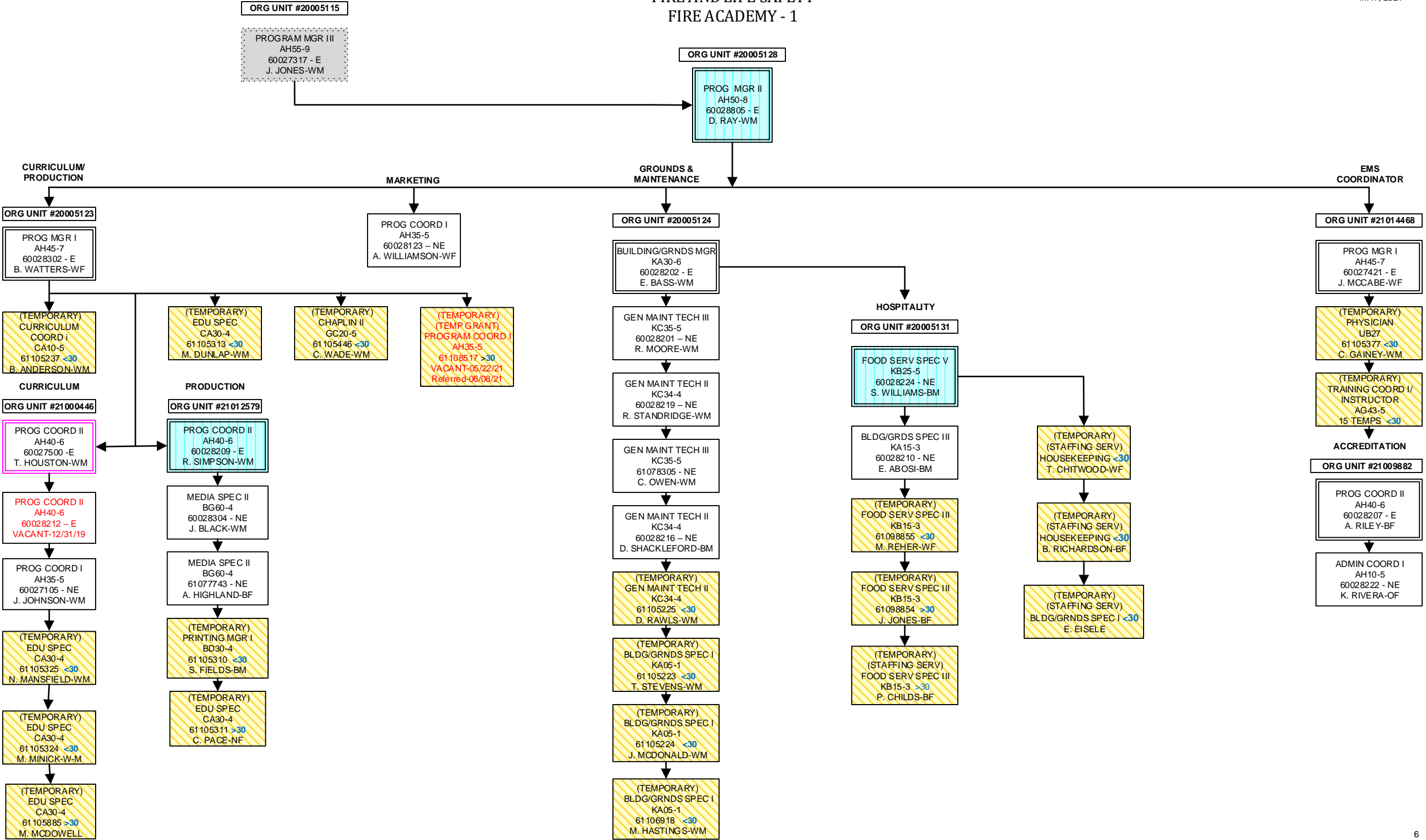
FIRE AND LIFE SAFETY  
OFFICE OF STATE FIRE MARSHAL

MAY, 2021



FIRE AND LIFE SAFETY  
FIRE ACADEMY - 1

MAY, 2021



FIRE AND LIFE SAFETY  
FIRE ACADEMY -2

MAY, 2021

ORG UNIT #20005115  
PROGRAM MGR III  
AH55-9  
60027317 - E  
J. JONES-WM

ORG UNIT #20005128  
PROG MGR II  
AH50-8  
60028805 - E  
D. RAY-WM

TRAINING/  
INSTRUCTION  
ORG UNIT #20005133

PROG MGR I  
AH45-7  
60028305 - E  
T. BROWN-BM

ADMINISTRATION

ORG UNIT #20005122  
ADMIN COORD I  
AH10-5  
60028217 - E  
S. BUSH-BF

ADMIN ASST  
AA75-4  
60028303 - NE  
O. STALEY-BF

ADMIN ASST  
AA75-4  
60028213 - NE  
G. EVANS-BF

ADMIN ASST  
AA75-4  
60028211 - NE  
K. BRANTNER-WF

REGIONAL

ORG UNIT #20005126  
PROG COORD II  
AH40-6  
60028204 - E  
E. ADAMS-WM

SPECIAL OPERATIONS

ORG UNIT #21024393  
PROG COORD II  
AH40-6  
60028206 - E  
J. HEADRICK-WM

(TEMPORARY)  
FSO II  
JC70-4  
9 TEMPS  
FSO III  
JC80-5  
2 TEMPS

RESIDENT

ORG UNIT #20005130  
PROG COORD II  
AH40-6  
60028223 - E  
K. WATSON-BF

PROG COORD I  
AH35-5  
60028301 - NE  
C. BECKHAM-WM

PROG COORD I  
AH35-5  
60028200 - NE  
C. MILES-WM

PROG COORD I  
AH35-5  
60028208 - NE  
VACANT-12/01/19  
Hired-06/17/21

PROG COORD I  
AH35-5  
60028124 - NE  
VACANT-09/18/20  
Referred-05/13/21

PROG COORD I  
AH35-5  
60028952 - NE  
VACANT-10/02/20  
Referred-05/13/21

(TEMPORARY)  
EQUIP OPER III  
KD45-3  
6115208 <30  
J. WHITE-WM

(TEMPORARY)  
FSO I  
JC60-4  
17 TEMPS  
FSO II  
JC70-5  
4 TEMPS

ORG UNIT #20005129  
REGION 1 GREENVILLE

PROG COORD I  
AH35-5  
60028221 - E  
D. DUNCAN-WM

(TEMPORARY)  
ADMIN ASST  
AA75-4  
61105213 - NE <30  
L. WILLINGHAM-WF

(TEMPORARY)  
FSO I  
JC60-4  
21 TEMPS  
FSO II  
JC70-5  
5 TEMPS

ORG UNIT #21011927  
REGION 2 YORK CO.

PROG COORD I  
AH35-5  
60028122 - E  
J. MCCARLEY-WM  
EXEM GRV

(TEMPORARY)  
ADMIN ASST  
AA75-4  
61105214 <30  
G. CIBBARELLI-WF

(TEMPORARY)  
FSO I  
JC60-4  
19 TEMPS

ORG UNIT #20005132  
REGION 3 FLORENCE

PROG COORD I  
AH35-5  
60028300 - E  
E. JOYCE-WF

(TEMPORARY)  
FSO I  
JC60-4  
20 TEMPS

(TEMPORARY)  
EDU SPEC  
CA30-4  
61105670 <30  
K. NIEUWENHUIS

ORG UNIT #21024097  
REGION 4 HORRY

PROG COORD I  
AH35-5  
60028205 - E  
E. FILYAW-WM

(TEMPORARY)  
FSO I  
JC60-4  
10 TEMPS

ORG UNIT #21001228  
REGION 5 CHARLESTON

PROG COORD I  
AH35-5  
60028121 - E  
E. BOLEN-WM

(TEMPORARY)  
ADMIN ASST  
AA75-4  
61105215 <30  
E. BATES-WF

(TEMPORARY)  
FSO I  
JC60-4  
14 TEMPS  
FSO II  
JC70-5  
4 TEMPS

ORG UNIT #21011926  
REGION 6 AIKEN

PROG COORD I  
AH35-5  
60028307 - E  
M. TURNER-WF

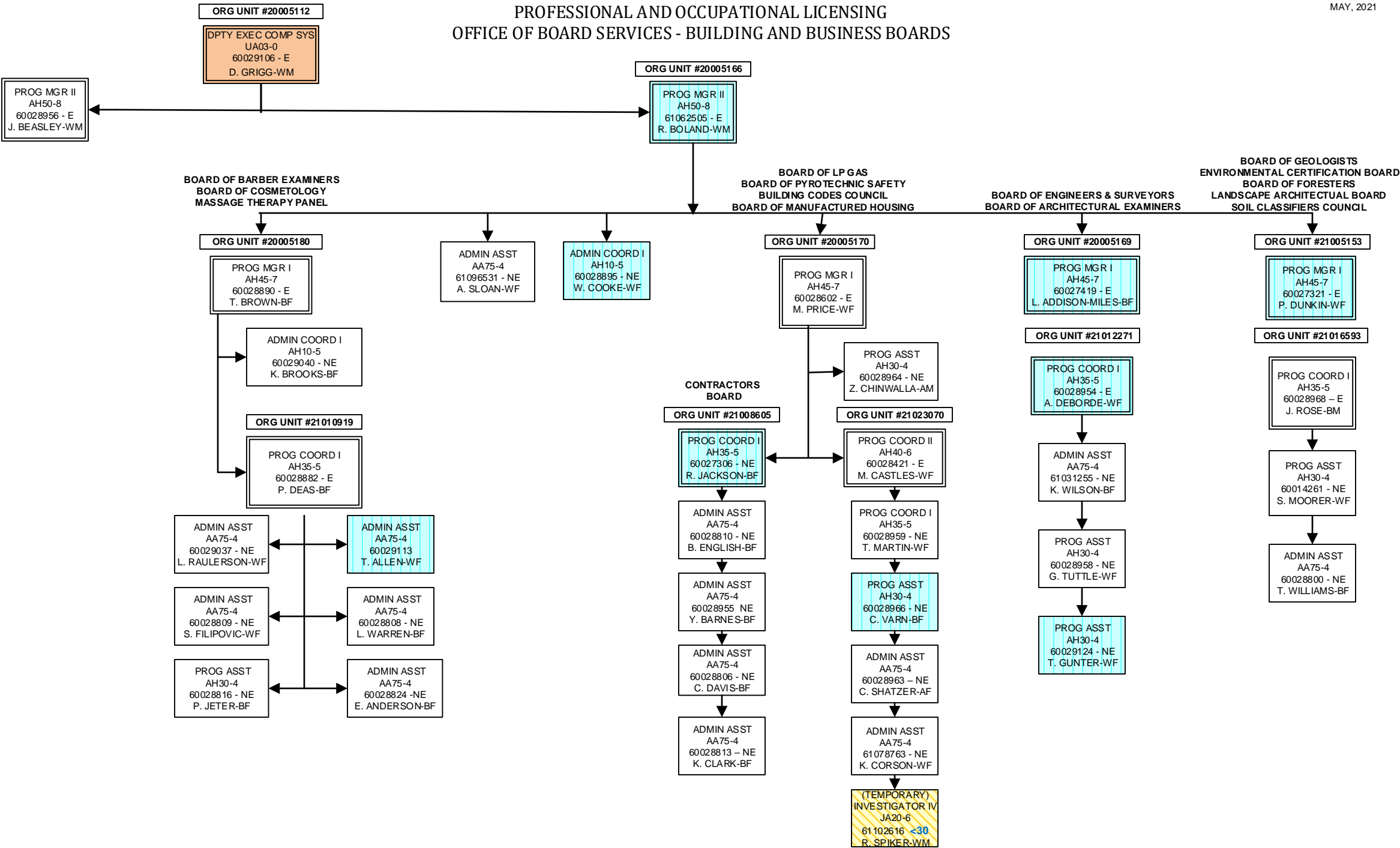
(TEMPORARY)  
ADMIN ASST  
AA75-4  
61105216 <30  
L. WAY-WF

(TEMPORARY)  
FSO I  
JC60-4  
11 TEMPS  
FSO II  
JC70-5  
2 TEMPS

ORG UNIT #21024098  
REGION 7 ANDERSON

PROG COORD I  
AH35-5  
60028220 - E  
W. CRAFT-WM

(TEMPORARY)  
FSO I  
JC60-4  
14 TEMPS  
FSO II  
JC70-5  
1 TEMP

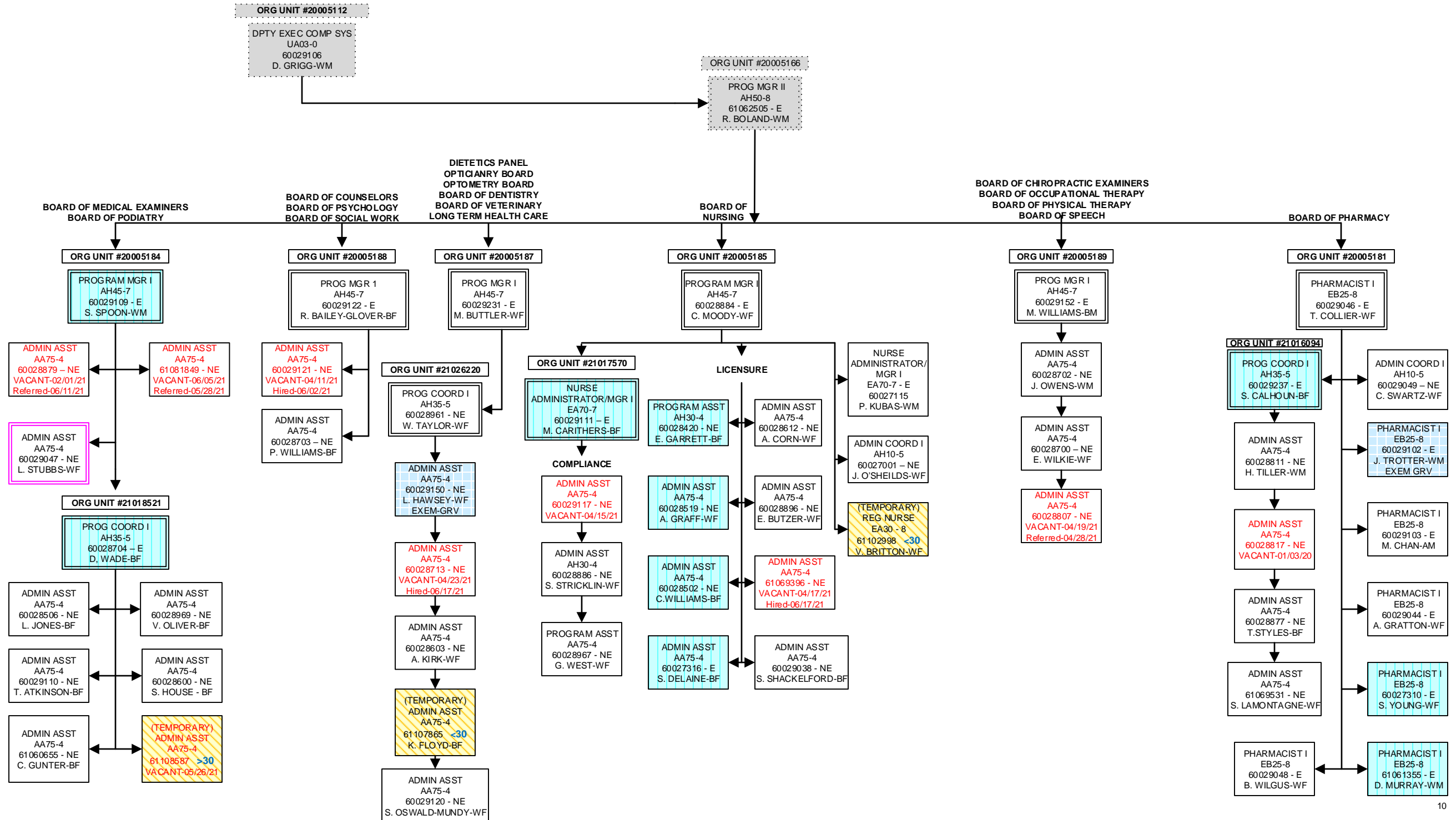






OFFICE OF BOARD SERVICES  
HEALTH AND MEDICALLY RELATED BOARDS

MAY, 2021



OFFICE OF INVESTIGATIONS AND ENFORCEMENT

