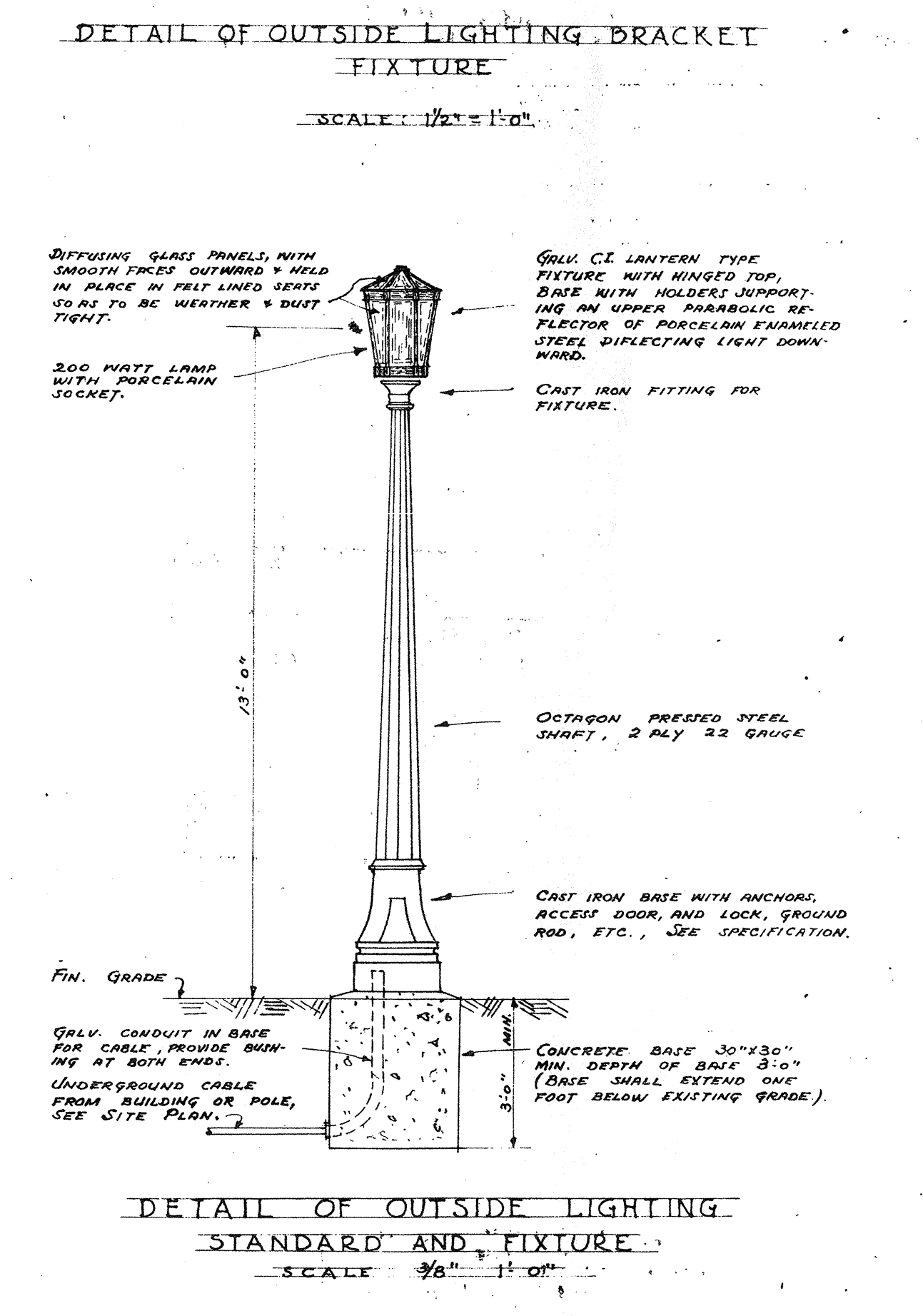
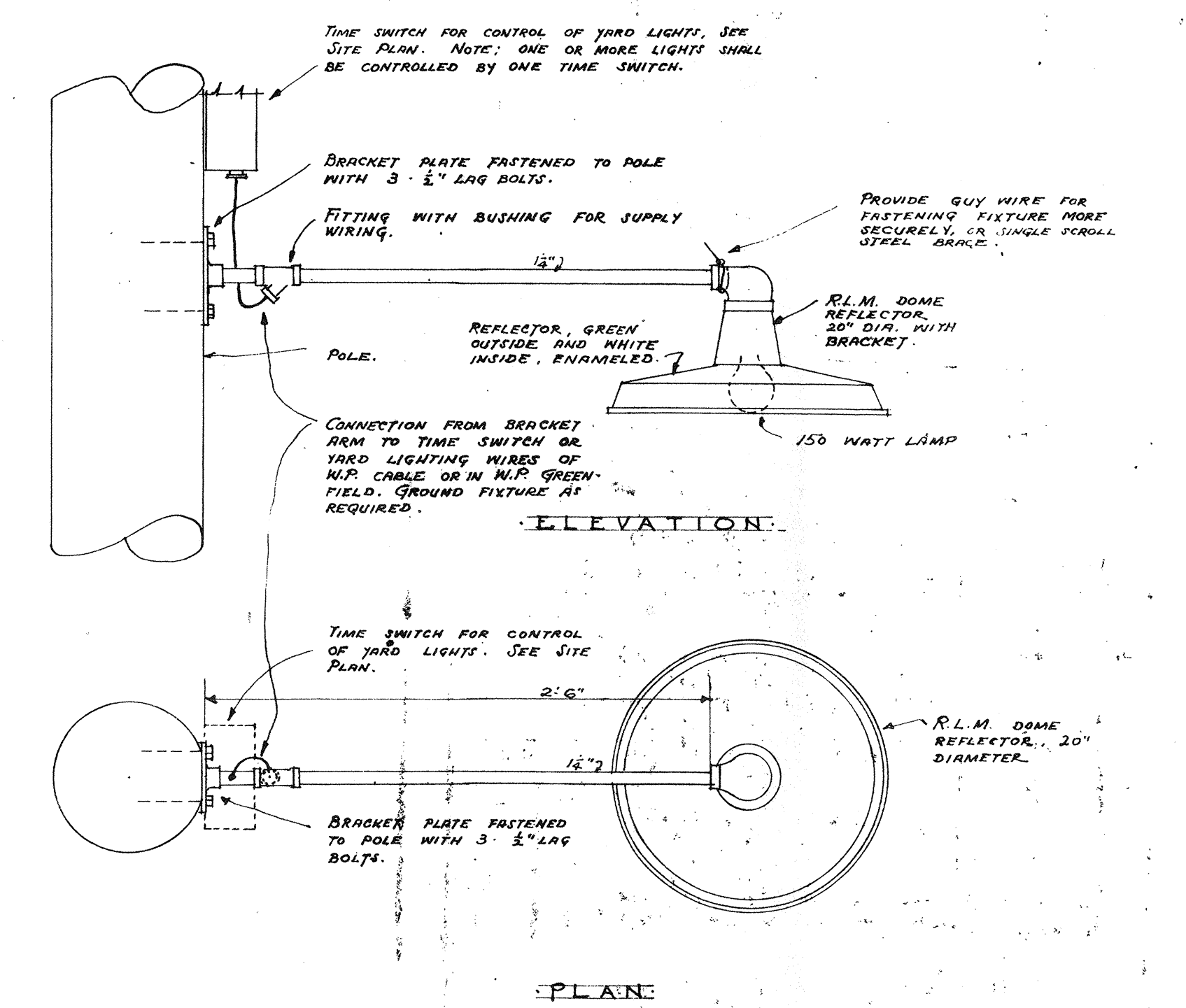
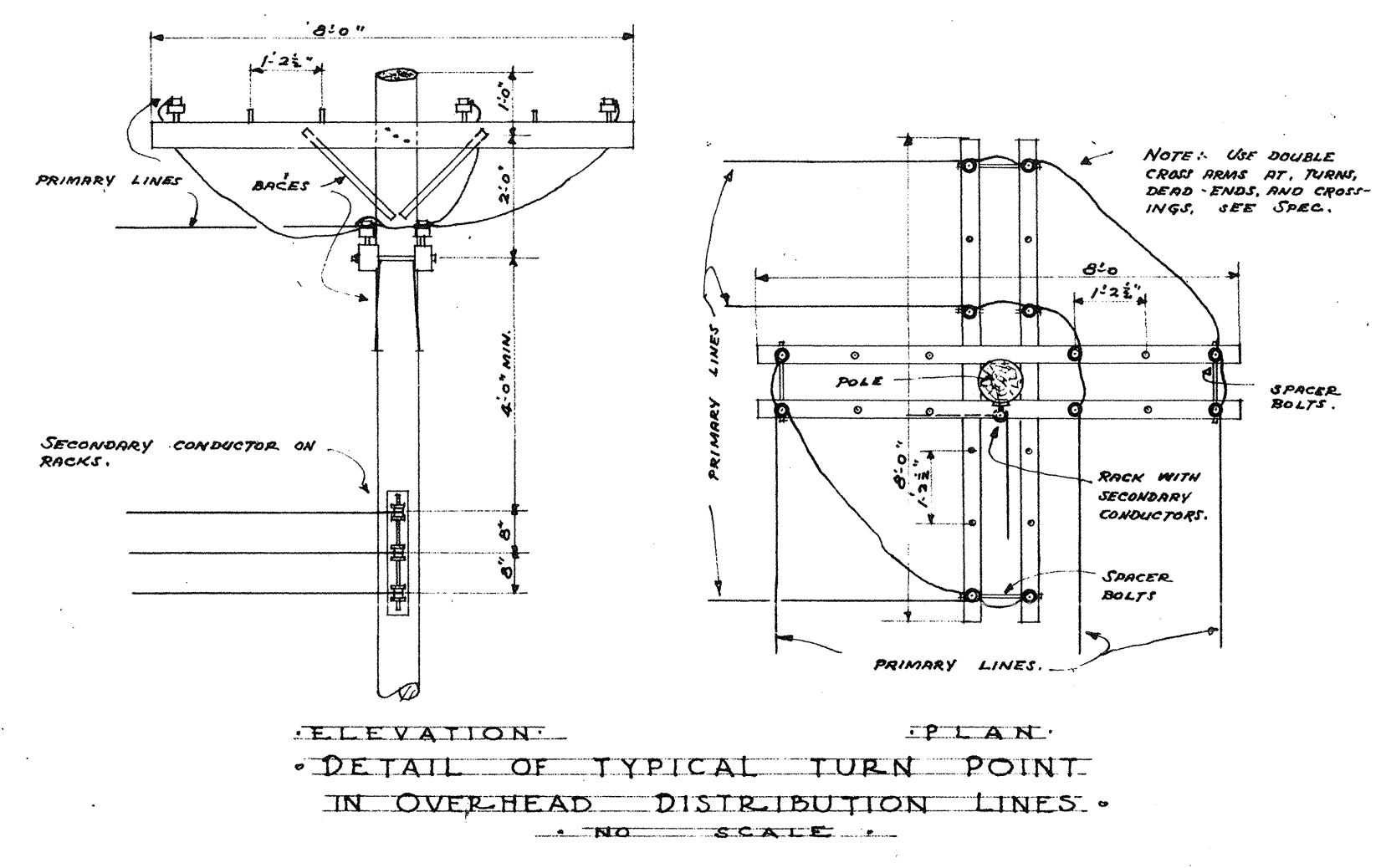
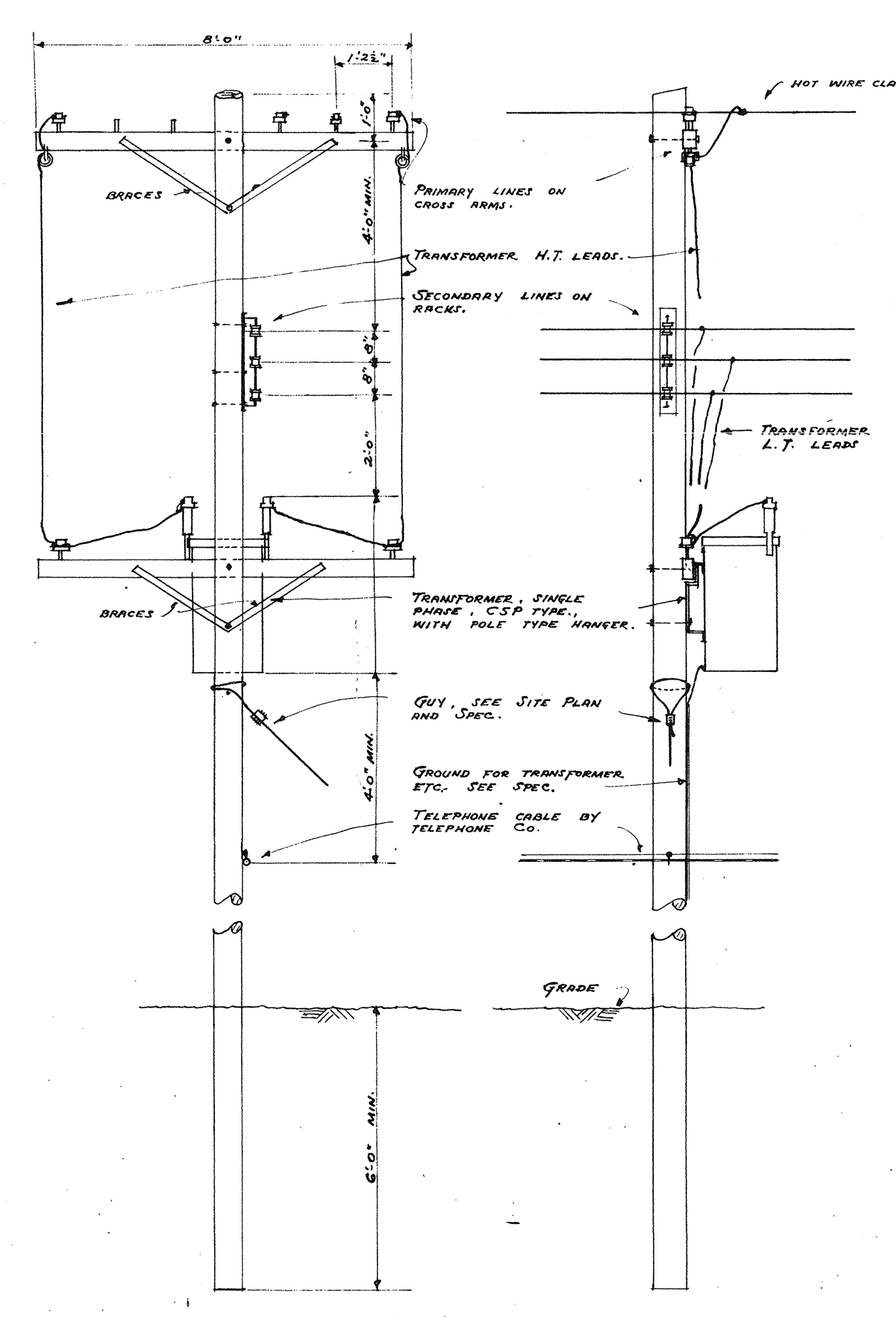
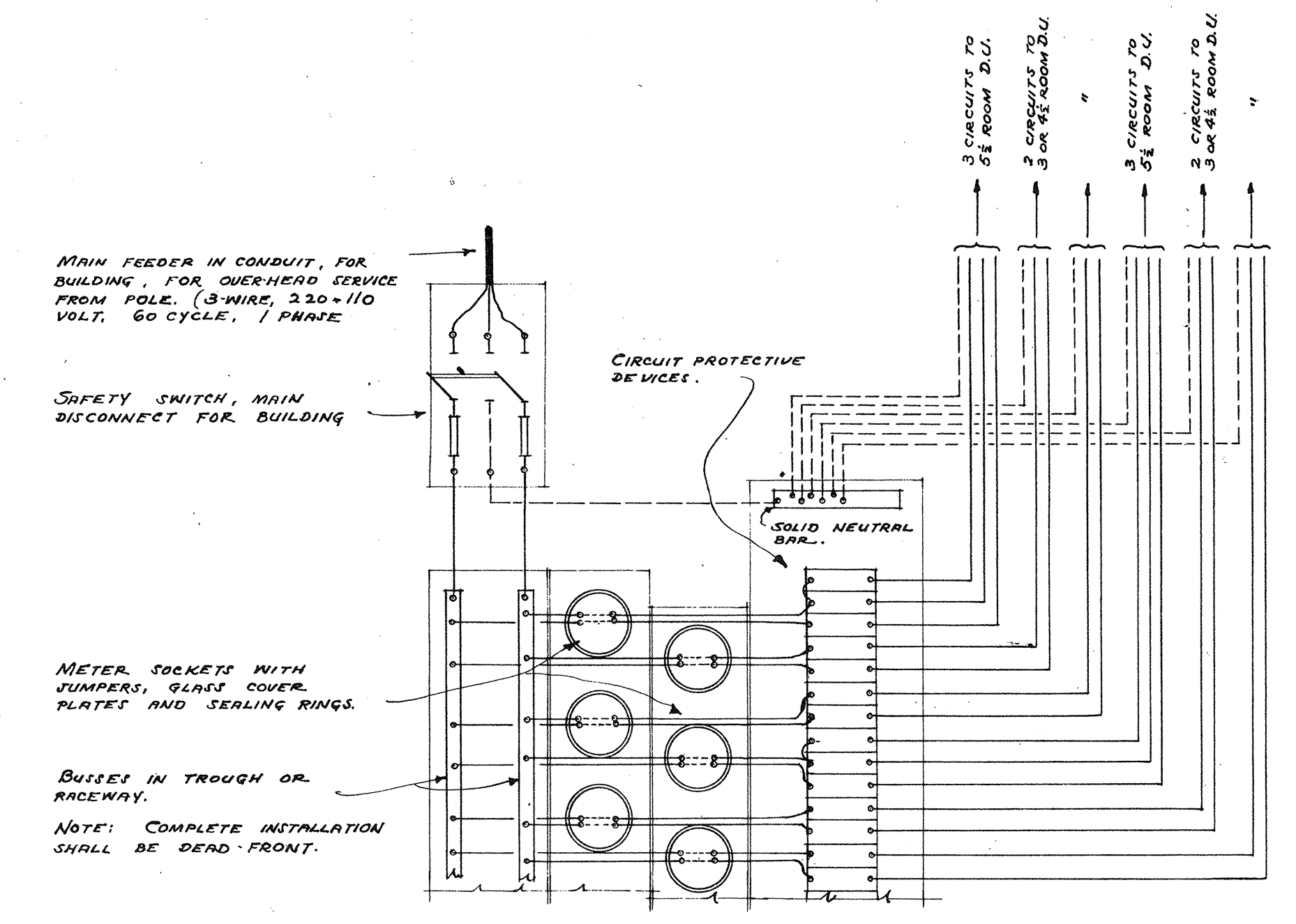
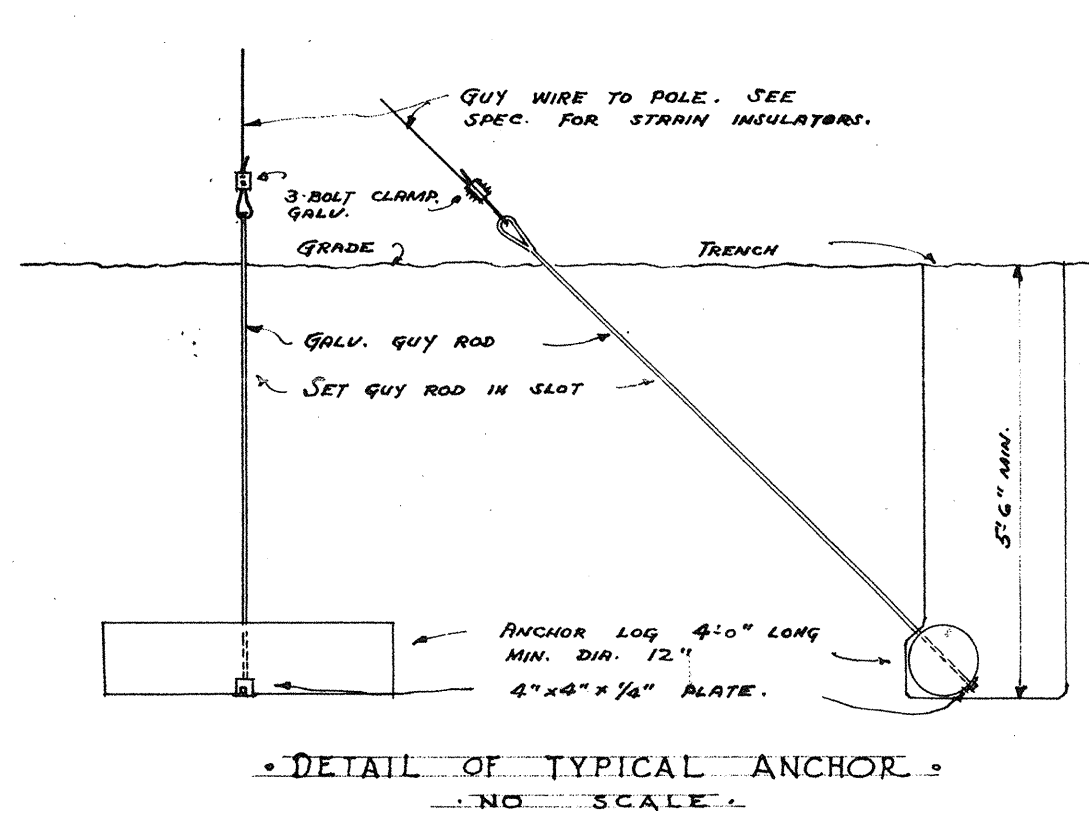


DISTRIBUTION CENTER SCHEDULE							
NUMBER OF BUILDING	NUMBER OF D.U.	PANEL	NUMBER OF CIRCUITS	MAIN FEEDER SAFETY SWITCH FOR SERVICE TO D.U.	MAIN FEEDER FOR SERVICE TO D.U.	NUMBER OF METER SOCKETS	NUMBER OF TIME SWITCHES
1	12	A	20	100 AMP 2P (N)	3" 2'S - 1/2" O.	12	
2	10	B	24	"	3" 2'S - 1/2" O.	10	
3	10	C	24	"	"	"	
4	10	D	24	"	"	"	
5	10	E	24	"	"	"	
6	10	F	24	"	"	"	
7	10	G	24	"	"	"	
8	10	H	24	"	"	"	
9	10	I	24	"	"	"	
10	10	J	24	"	"	"	
11	10	K	24	"	"	"	
12	10	L	24	"	"	"	
13	10	M	24	"	"	"	
14	10	N	24	"	"	"	
15	8	O	18	"	3" 4'S - 1/2" O.	8	
16	8	P	18	"	3" 2'S - 1/2" O.	10	
17	10	Q	24	"	3" 2'S - 1/2" O.	10	
18	10	R	22	"	3" 2'S - 1/2" O.	10	
19	10	S	22	"	"	"	
20	8	T	18	"	3" 4'S - 1/2" O.	8	
21	8	U	18	"	"	"	
22	10	V	24	"	3" 2'S - 1/2" O.	10	
23	10	W	24	"	"	"	
24	10	X	24	"	3" 2'S - 1/2" O.	10	
ADMINISTRATION		Y	24	"	"	1 (30 AMP)	



FOREST DRIVE

WASHINGTON STREET

KEY PLAN

TYPICAL ELECTRICAL DETAILS

GONZALES GARDENS

LOW RENT HOUSING PROJECT, COLUMBIA, S. C. 21

DEVELOPED BY THE HOUSING AUTHORITY OF THE CITY OF COLUMBIA, S. C.

UNDER LOAN CONTRACT WITH THE UNITED STATES HOUSING AUTHORITY.

CHECKED: C. P. T. DATE: 9-15-54

APPROVED BY: UNITED STATES HOUSING AUTHORITY

REVISIONS: APPROVED BY: THE HOUSING AUTHORITY OF THE CITY OF COLUMBIA, S. C.

CHAIRMAN: JAMES B. URBAN

ARCHITECT: JAMES B. URBAN

DATE: 9-15-54

SCALE: 3/8" = 1'-0"

AS NOTED

608