



# Cultural Resources Project Screening Form

File Number:  PIN:  Route:  County:

Project Name:

Type 1: Resurfacing, installation of fencing, signs, pavement markings, traffic signals, passenger shelters, railroad warning devices, installation of rumble strips, and landscaping

Project Type

Type 2: Bridge replacements on alignment, construction of bicycle/pedestrian facilities, and intersection improvements

Type 3: Projects that do not fall into Type 1 and Type 2 categories (e.g. road widening)

## Comments

This project will replace the bridge that carries S-342 (Beaver Dam Creek Road) over Big Beaverdam Creek. A small amount of new right-of-way (ROW) may be required. The area of potential effects (APE) was established as a 100 foot wide corridor straddling the roadway for a distance of 700 feet to the south and 700 feet to the north of the bridge, widening to 200 feet at the bridge. The architectural APE was a 300 foot buffer around the archaeological APE. A background review indicated that one previously recorded cultural resource, a historic bridge (Asset No. 2396), was present within the APE. The resource has been previously determined not NRHP eligible. A cultural resources survey was conducted on February 13, 2019. Survey consisted of a pedestrian reconnaissance of the project area augmented by the excavation of shovel test pits (STP) at 30 meter intervals. A total of 20 STPs were excavated. Eight potential STP locations were examined but not excavated due to standing water or hydric soil. All of the STPs were negative. One archaeological site was recorded (38NE1379). The resource, a twentieth century cemetery, was also recorded as aboveground resource 1985. No additional cultural resources investigations are recommended. No historic properties will be affected by this project.

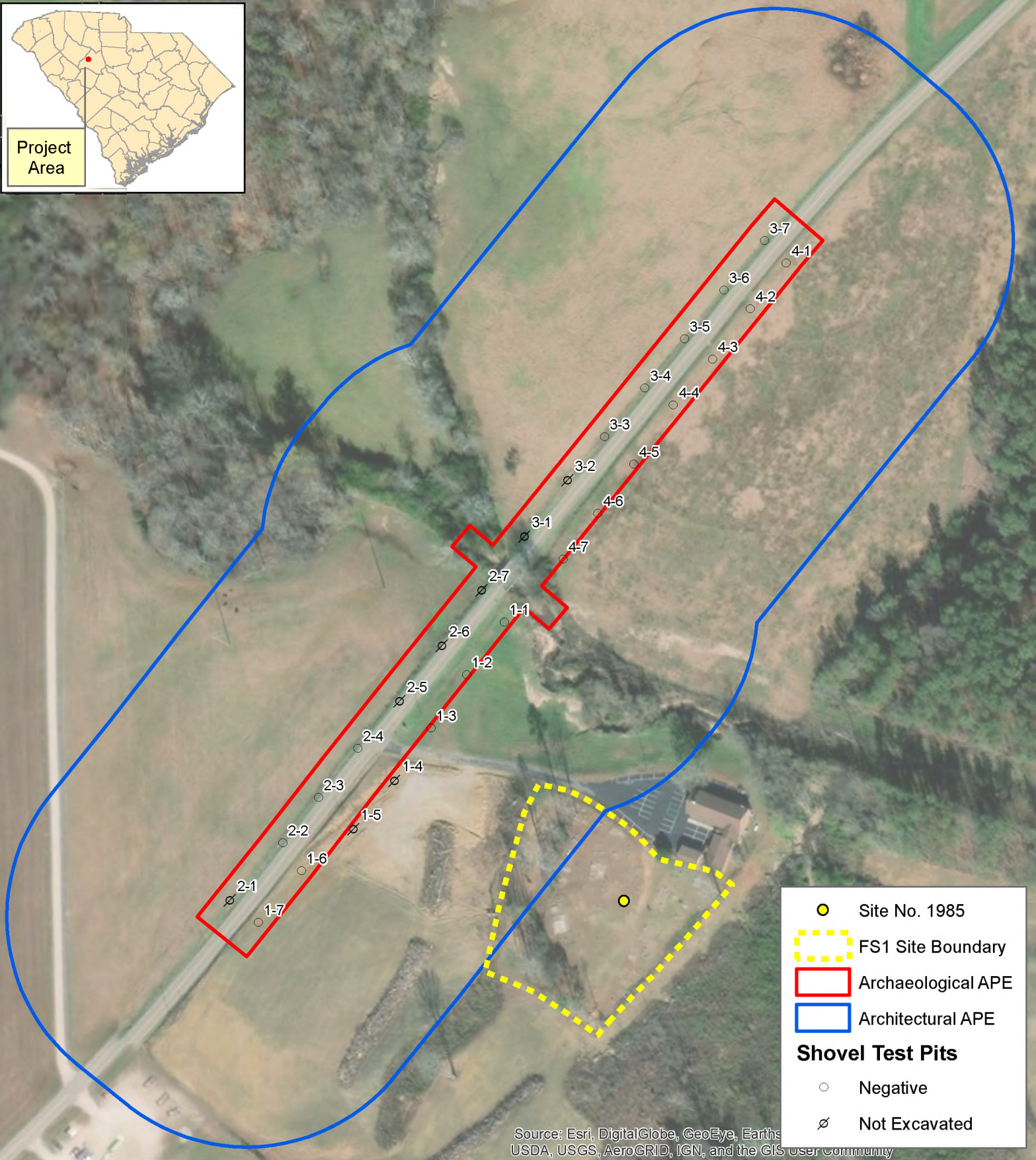
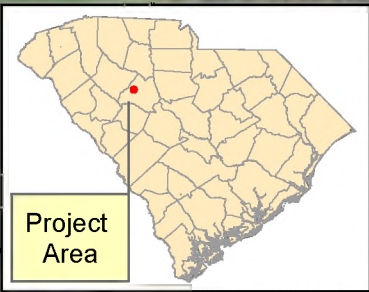
Effect Determination:

\*SHPO consultation is required for all Type 3 projects and any project with a No Adverse or Adverse Effect Determination.

This screening form was developed to satisfy documentation requirements for Type I and Type II projects under a Programmatic Agreement between the Federal Highway Administration, the South Carolina State Historic Preservation Office, the US Army Corps of Engineers, and the South Carolina Department of Transportation. For Type I and Type II projects that have no effect on historic properties, the completion of this screening form with supporting documentation (e.g. ArchSite Map) provides evidence of FHWA and SCDOT's compliance with Section 106 of the National Historic Preservation Act.

Prepared by:

Review Date:



- Site No. 1985
- FS1 Site Boundary
- Archaeological APE
- Architectural APE

**Shovel Test Pits**

- Negative
- ∅ Not Excavated

March 5, 2019



## Load Restricted Bridge Newberry County

S-342 Over Big  
Beaver Dam Creek

Project ID: P038068

