

SOUTH CAROLINA
DEPARTMENT OF LABOR, LICENSING AND REGULATION
ORGANIZATIONAL CHART

JUNE 2021

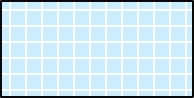
SOUTH CAROLINA
DEPARTMENT OF LABOR, LICENSING AND REGULATION
ORGANIZATIONAL CHARTS

Light Orange Square



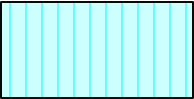
Employee Exempt from Grievance

Light Blue Square



Employee returned after TERI
or Retirement; Exempt Grv

Turquoise Vertical Stripe



Employee eligible to retire
within 5 years by service
or age

White Solid Red Letters



Vacant Position-Vacancy
Date

Yellow Diagonal Stripe



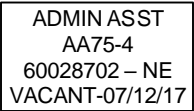
Temporary Employee

Dark Pink Outline



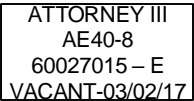
Borrowed position

NE Designation



Non-exempt position

E Designation



Exempt position

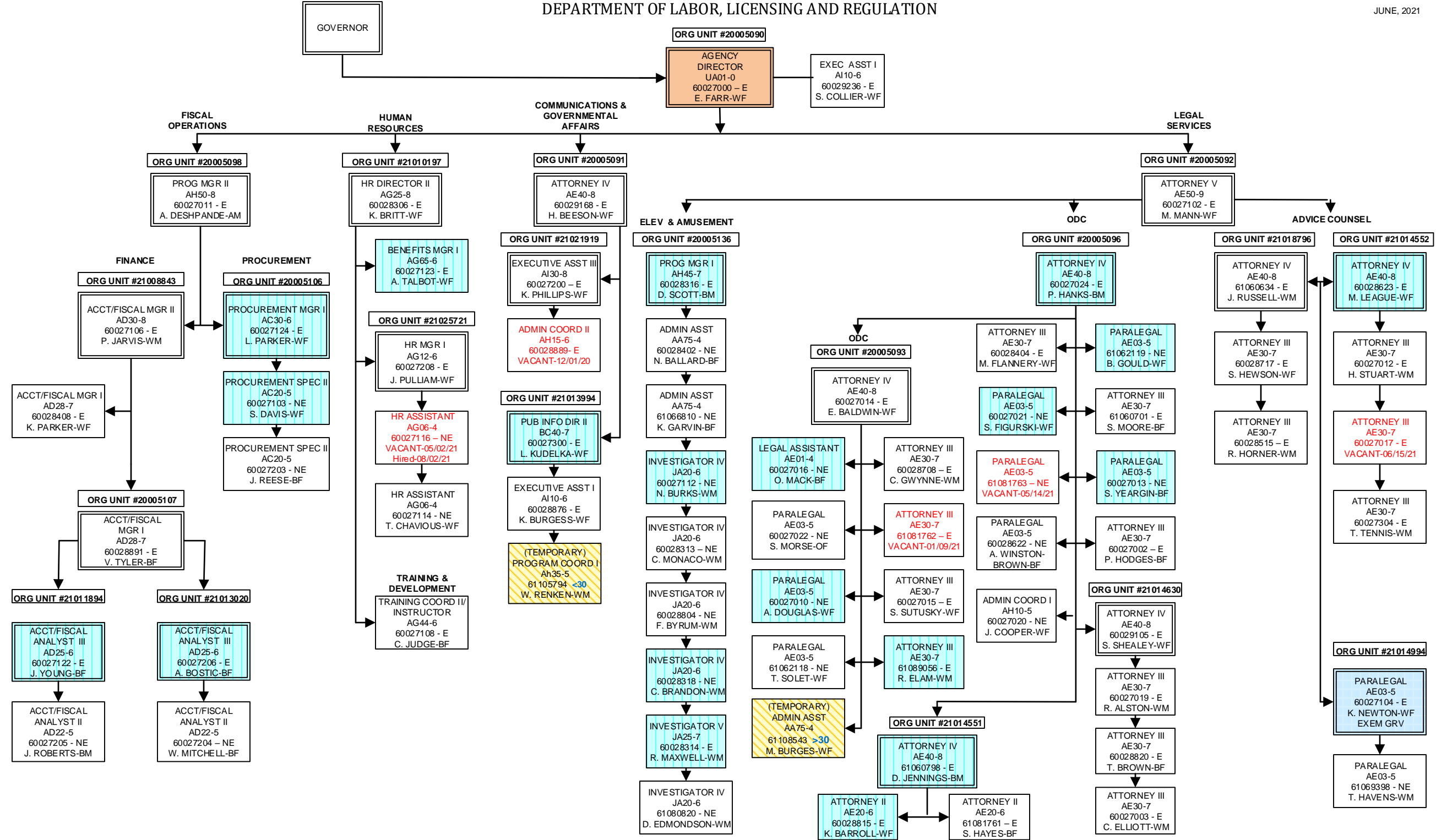
Purple Diagonal
Stripe



Two-Week Break

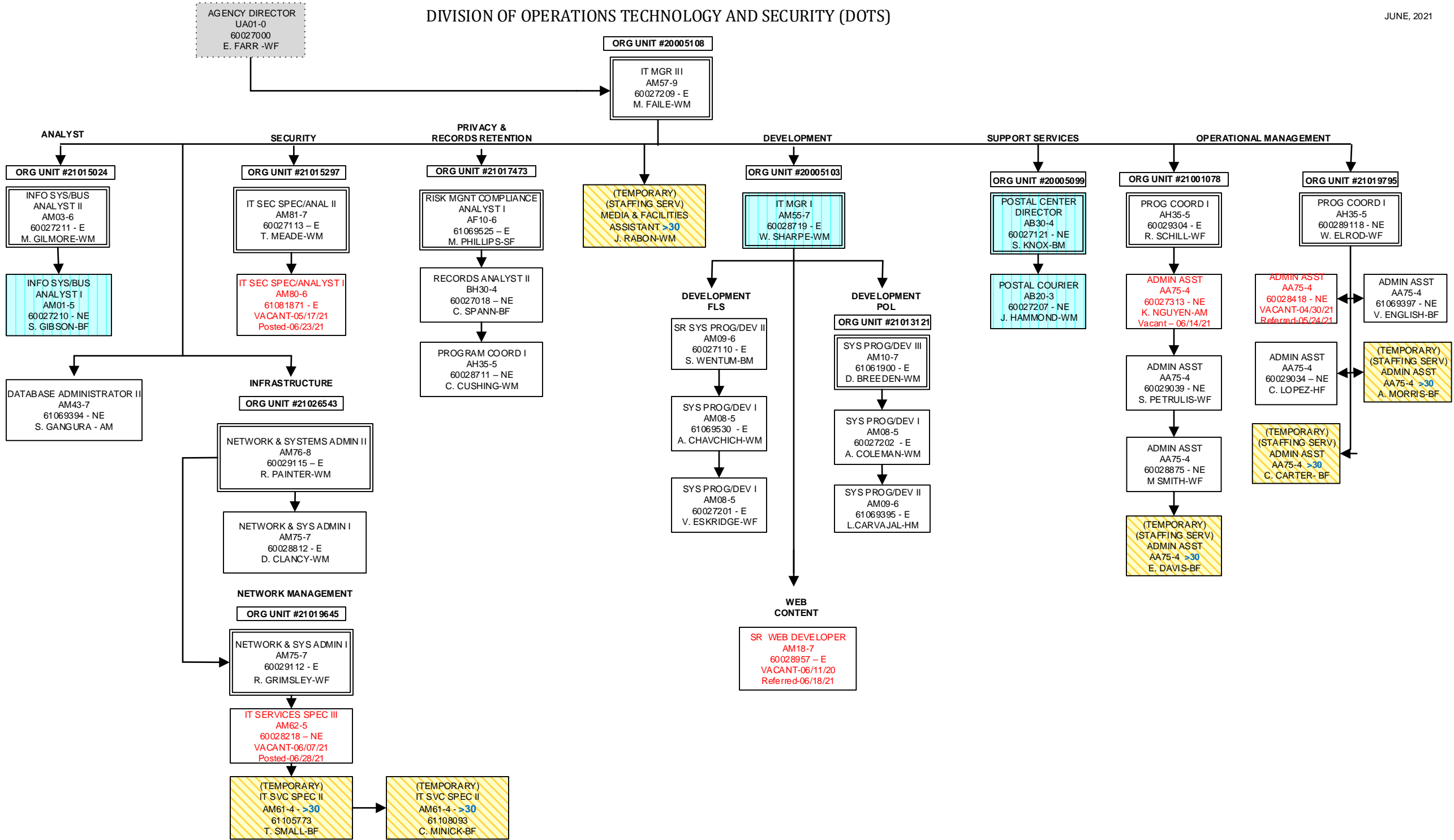
DEPARTMENT OF LABOR, LICENSING AND REGULATION

JUNE, 2021



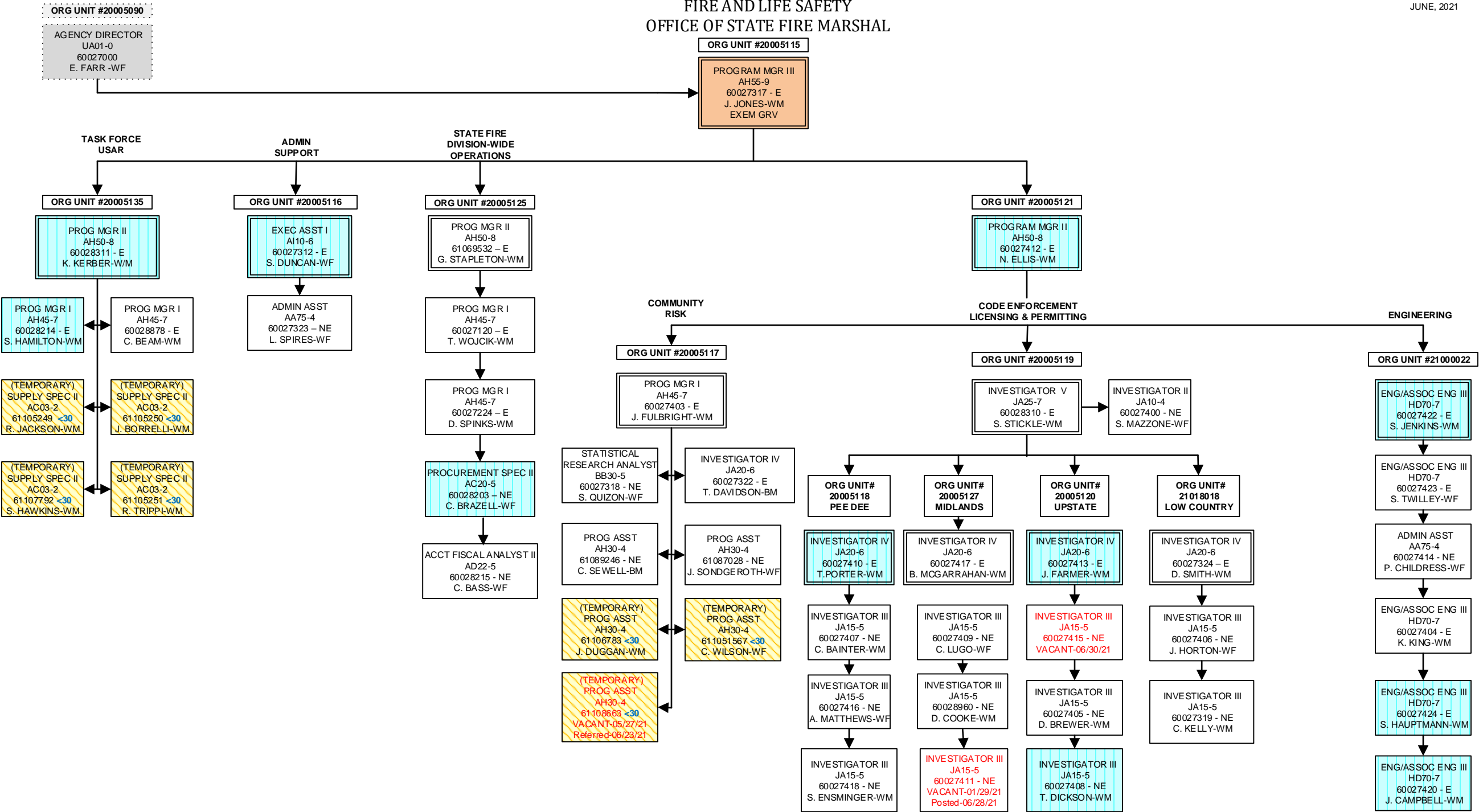
DIVISION OF OPERATIONS TECHNOLOGY AND SECURITY (DOTS)

JUNE, 2021



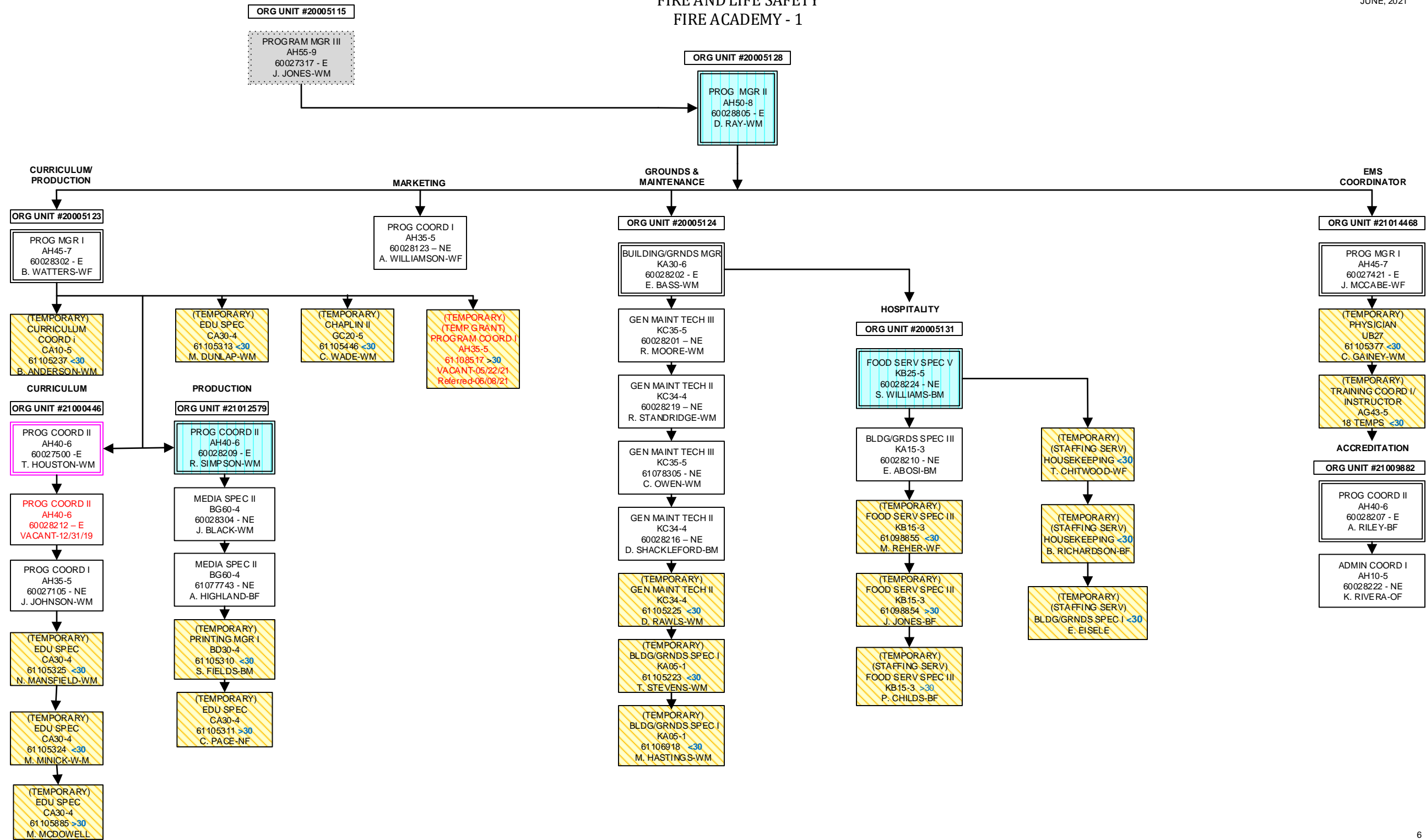
FIRE AND LIFE SAFETY
OFFICE OF STATE FIRE MARSHAL

JUNE, 2021



FIRE AND LIFE SAFETY
FIRE ACADEMY - 1

JUNE, 2021



FIRE AND LIFE SAFETY
FIRE ACADEMY -2

ORG UNIT #20005115
PROGRAM MGR III
AH55-9
60027317 - E
J. JONES-WM

ORG UNIT #20005128
PROG MGR II
AH50-8
60028805 - E
D. RAY-WM

TRAINING/
INSTRUCTION
ORG UNIT #20005133

PROG MGR I
AH45-7
60028305 - E
T. BROWN-BM

ADMINISTRATION

ORG UNIT #20005122
ADMIN COORD I
AH10-5
60028217 - E
S. BUSH-BF

ADMIN ASST
AA75-4
60028303 - NE
O. STALEY-BF

ADMIN ASST
AA75-4
60028213 - NE
G. EVANS-BF

ADMIN ASST
AA75-4
60028211 - NE
K. BRANTNER-WF

REGIONAL

ORG UNIT #20005126
PROG COORD II
AH40-6
60028204 - E
E. ADAMS-WM

SPECIAL OPERATIONS

ORG UNIT #21024393
PROG COORD II
AH40-6
60028206 - E
J. HEADRICK-WM

(TEMPORARY)
FSO II
JC70-4
9 TEMPS
FSO III
JC80-5
2 TEMPS

RESIDENT

ORG UNIT #20005130
PROG COORD II
AH40-6
60028223 - E
K. WATSON-BF

PROG COORD I
AH35-5
60028301 - NE
C. BECKHAM-WM

PROG COORD I
AH35-5
60028200 - NE
C. MILES-WM

PROG COORD I
AH35-5
60028208 - NE
J. CHARLESTON-BM

PROG COORD I
AH35-5
60028124 - NE
VACANT-09/18/20
Referred-05/13/21

PROG COORD I
AH35-5
60028952 - NE
VACANT-10/02/20
Referred-05/13/21

(TEMPORARY)
EQUIP OPER III
KD45-3
6115208 <30
J. WHITE-WM

(TEMPORARY)
FSO I
JC60-4
17 TEMPS
FSO II
JC70-5
4 TEMPS

ORG UNIT #20005129
REGION 1 GREENVILLE

PROG COORD I
AH35-5
60028221 - E
D. DUNCAN-WM

(TEMPORARY)
ADMIN ASST
AA75-4
61105213 - NE <30
L. WILLINGHAM-WF

(TEMPORARY)
FSO I
JC60-4
21 TEMPS
FSO II
JC70-5
5 TEMPS

ORG UNIT #21011927
REGION 2 YORK CO.

PROG COORD I
AH35-5
60028122 - E
J. MCCARLEY-WM
EXEM GRV

(TEMPORARY)
ADMIN ASST
AA75-4
61105214 <30
G. CIBBARELLI-WF

(TEMPORARY)
FSO I
JC60-4
20 TEMPS

ORG UNIT #20005132
REGION 3 FLORENCE

PROG COORD I
AH35-5
60028300 - E
E. JOYCE-WF

(TEMPORARY)
EDU SPEC
CA30-4
61105670 <30
K. NIEUWENHUIS

(TEMPORARY)
FSO I
JC60-4
22 TEMPS

ORG UNIT #21024097
REGION 4 HORRY

PROG COORD I
AH35-5
60028205 - E
E. FIFYAW-WM

(TEMPORARY)
ADMIN ASST
AA75-4
61108586 <30
H. GASQUE-WF

(TEMPORARY)
FSO I
JC60-4
11 TEMPS

ORG UNIT #21001228
REGION 5 CHARLESTON

PROG COORD I
AH35-5
60028121 - E
E. BOLEN-WM

(TEMPORARY)
ADMIN ASST
AA75-4
61105215 <30
E. BATES-WF

(TEMPORARY)
FSO I
JC60-4
17 TEMPS
FSO II
JC70-5
4 TEMPS

ORG UNIT #21011926
REGION 6 AIKEN

PROG COORD I
AH35-5
60028307 - E
M. TURNER-WF

(TEMPORARY)
ADMIN ASST
AA75-4
61105216 <30
L. WAY-WF

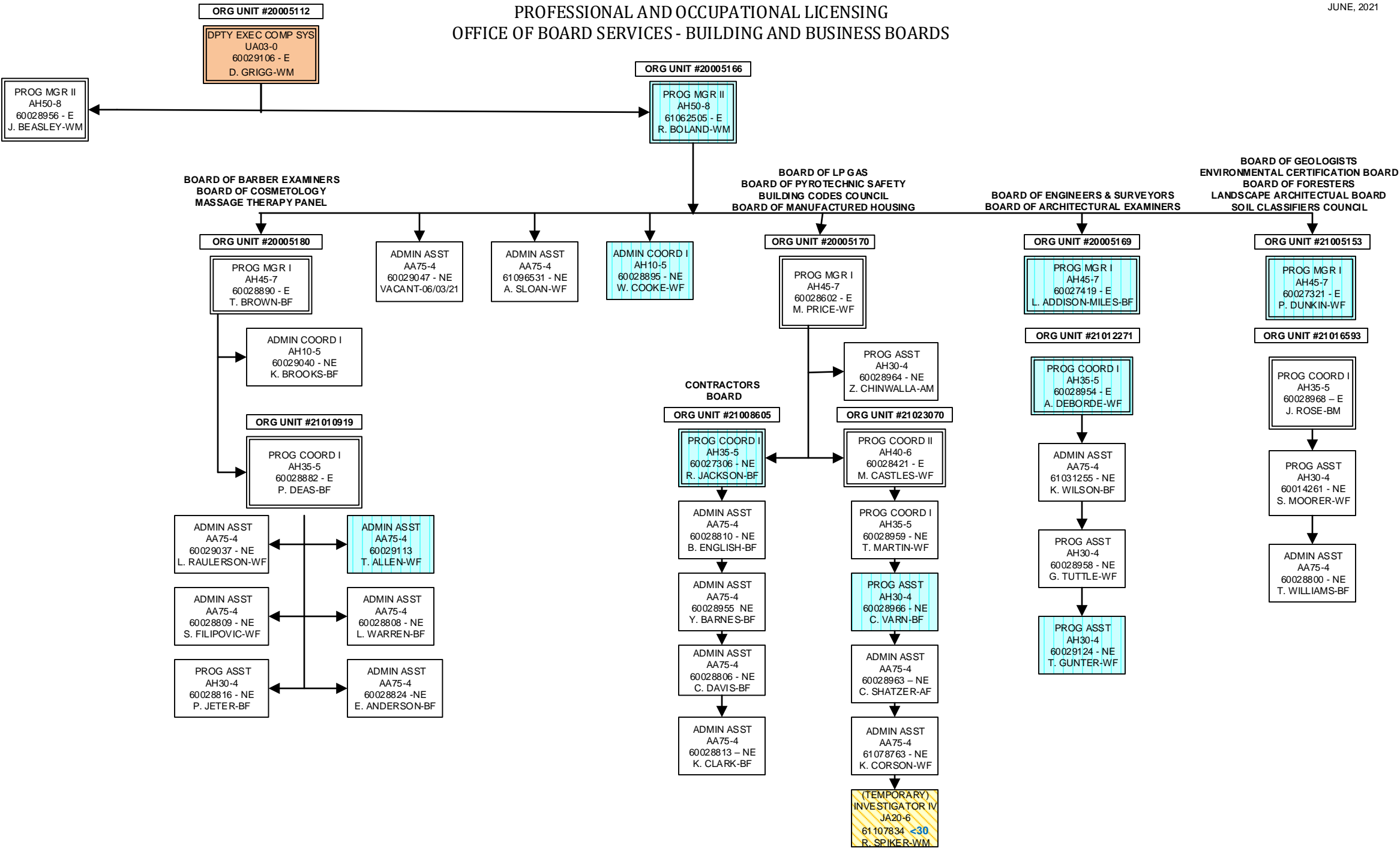
(TEMPORARY)
FSO I
JC60-4
11 TEMPS
FSO II
JC70-5
2 TEMPS

ORG UNIT #21024098
REGION 7 ANDERSON

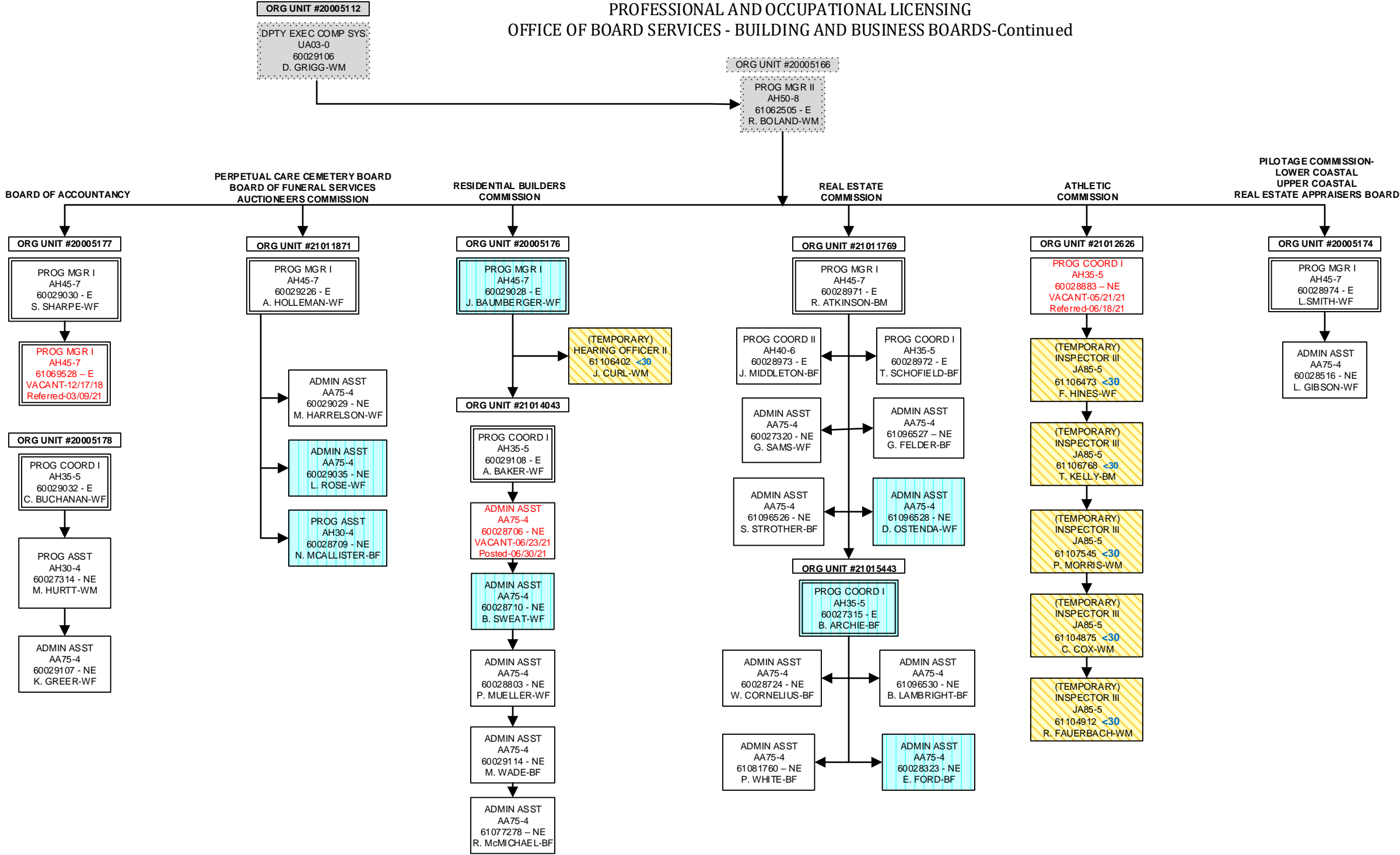
PROG COORD I
AH35-5
60028220 - E
W. CRAFT-WM

(TEMPORARY)
ADMIN ASST
AA75-4
61107751 <30
C. POPHAM-WF

(TEMPORARY)
FSO I
JC60-4
16 TEMPS
FSO II
JC70-5
1 TEMP

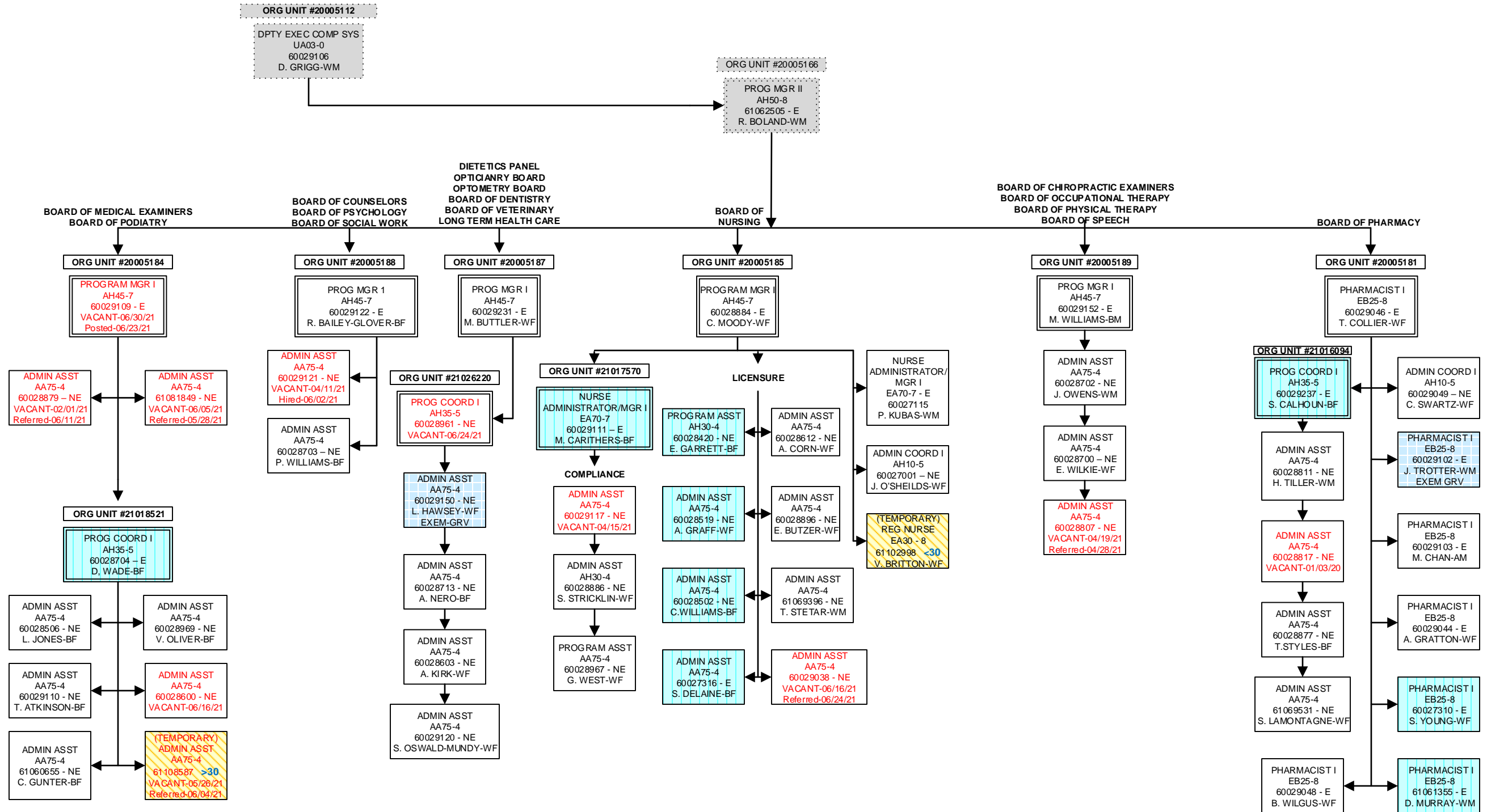


PROFESSIONAL AND OCCUPATIONAL LICENSING
OFFICE OF BOARD SERVICES - BUILDING AND BUSINESS BOARDS-Continued



OFFICE OF BOARD SERVICES
HEALTH AND MEDICALLY RELATED BOARDS

JUNE, 2021



OFFICE OF INVESTIGATIONS AND ENFORCEMENT

JUNE, 2021

