
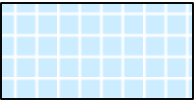
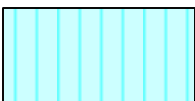





SOUTH CAROLINA  
DEPARTMENT OF LABOR, LICENSING AND REGULATION  
ORGANIZATIONAL CHART

SEPTEMBER 30, 2015

**SOUTH CAROLINA  
DEPARTMENT OF LABOR, LICENSING AND REGULATION  
ORGANIZATIONAL CHARTS**

Pink Diamond		<b>TERI Employee</b>
Light Blue Square		<b>Employee returned after TERI or Retirement</b>
Turquoise Vertical Stripe		<b>Employee eligible to retire within 5 years by service or age</b>
White Solid Red Letters		<b>Vacant Position-Vacancy Date</b>
Yellow Diagonal Stripe		<b>Temporary Employee</b>
Grayed out		<b>Previously counted position</b>



FIRE AND LIFE SAFETY  
OFFICE OF STATE FIRE MARSHAL

September 30, 2015

ORG UNIT #20005090  
AGENCY DIRECTOR  
UA01-0  
60027000  
R. TAYLOR -WF

ORG UNIT #20005115  
PROGRAM MGR III  
AH55-9  
60027317  
R. POLK-WM  
STATE FIRE MARSHAL

ORG UNIT #20005121

PROG MGR II  
AH50-8  
60027120  
VACANT-12/17/14

COMMUNITY  
RISK

ORG UNIT #20005135  
PROG MGR II  
AH50-8  
60028311  
D. MCMANUS-WM

ORG UNIT #20005117  
PROG MGR I  
AH45-7  
60027403  
T. WOJCIK-WM

ORG UNIT #20005116  
PROG COORD II  
AH40-6  
60027312  
S. DUNCAN-WF

ORG UNIT #20005125  
ADMIN COORD I  
AH10-5  
60028203  
C. BRAZELL-WF

ORG UNIT #20005119  
PROGRAM MGR I  
AH45-7  
60028310  
S. STICKLE-WM

ORG UNIT #21008920  
PROG MGR I  
AH45-7  
60027500  
J. HOSHALL-WM

ORG UNIT #21000022  
ENG/ASSOC ENG III  
HD70-7  
60027422  
D. BLACKWELL-WM

(TEMPORARY)  
ADMIN COORD I  
AH10-5  
VACANT-07/01/15

PROG COORD II  
AH40-6  
60027324  
C. BEAM-W/M

(TEMPORARY)  
PROG COORD I  
AH35-5  
61057768  
R. PORZIA-WM

ADMIN COORD II  
AH15-6  
60028878  
VACANT-6/10/14

(TEMPORARY)  
PROG COORD I  
AH35-5  
61057770  
R. TRIPP-WM

(TEMPORARY)  
PROG COORD I  
AH35-5  
61057741  
W. ALEXANDER-A/M

(TEMPORARY)  
PROG COORD I  
AH35-5  
60157769  
B. RHODES-WM

(TEMPORARY)  
PROG COORD I  
AH35-5  
61059326  
J. WEBER-WM

(TEMPORARY)  
PROG COORD I  
AH35-5  
61057977  
E. WEINSTEIN-WM

(TEMPORARY)  
PROG COORD I  
AH35-5  
61057771  
S. RUTHERFORD-WM

(TEMPORARY)  
PROG COORD I  
AH35-5  
61061744  
N. POUND-WM

(TEMPORARY)  
PROG COORD I  
AH35-5  
61061745  
VACANT-09/11/15

STATISTICAL  
RESEARCH ANALYST  
BB30-5  
60027318  
J. STOUT-WM

CURR COORD I  
CA10-5  
60027322  
A. SCOGGIN-WM

(TEMPORARY)  
PROG COORD  
AH35-5  
61060502  
C. GAINEY-WM

(TEMPORARY)  
PROG ASST  
AH30-4  
61057196  
E. MODRZYNSKI-WM

(TEMPORARY)  
PROG ASST  
AH30-4  
61060922  
A. AMACHER-WM

(TEMPORARY)  
PROG ASST  
AH30-4  
VACANT-12/10/14

(TEMPORARY)  
PROG ASST  
AH30-4  
61057195  
K. BAILEY-WF

(TEMPORARY)  
PROG ASST  
AH30-4  
VACANT-07/23/15

(TEMPORARY)  
FSO II  
JC70-4  
2 TEMPS

ADMIN ASST  
AA75-4  
60027323  
J. THOMAS-WF

ADMIN ASST  
AA75-4  
60028215  
D. LEBAR-WF

ORG UNIT #20005118  
INVESTIGATOR IV  
JA20-6  
60027410  
T. PORTER-WM

INVESTIGATOR III  
JA15-5  
60027407  
C. BAINTER-WM

INVESTIGATOR III  
JA15-5  
60027406  
VACANT-12/15/14

INVESTIGATOR III  
JA15-5  
60027416  
A. MATTHEWS-WF

INVESTIGATOR III  
JA15-5  
60028960  
C. OGDEN-WM

ORG UNIT #20005127  
INVESTIGATOR IV  
JA20-6  
60027413  
J. FARMER-WM

INVESTIGATOR III  
JA15-5  
60027411  
D. SMITH-WM

INVESTIGATOR III  
JA15-5  
60027405  
M. FOWLER-WM

INVESTIGATOR III  
JA15-5  
60027409  
VACANT-02/18/15

INVESTIGATOR III  
JA15-5  
60027412  
VACANT-08/31/15

ORG UNIT #20005120  
INVESTIGATOR IV  
JA20-6  
60027417  
R. BEEBE-WM

INVESTIGATOR III  
JA15-5  
60027415  
G. JAMES-WM

INVESTIGATOR III  
JA15-5  
60027418  
T. PADGETT-WM

INVESTIGATOR III  
JA15-5  
60027408  
J. JACKSON-BM

TRAIN & DEV DIR I  
AG40-6  
60028214  
VACANT-8/1/14

(TEMPORARY)  
EDU SPEC  
CA30-4  
61061152  
N. ELLIS-WM

ADMIN ASST  
AA75-4  
60027400  
S. SCOGGIN-WF

ADMIN ASST  
AA75-4  
60027319  
V. YONCE-WF

PROG COORD I  
AH35-5  
60027421  
VACANT-3/8/14

ENG/ASSOC ENG III  
HD70-7  
60027423  
B. KRITZ-WM

ADMIN ASST  
AA75-4  
60027414  
P. CHILDRESS-WF

ENG/ASSOC ENG III  
HD70-7  
60027404  
P. PATTERSON-WF

ENG/ASSOC ENG III  
HD70-7  
60027424  
T. PENNY-WF

ENG/ASSOC ENG III  
HD70-7  
60027420  
J. CAMPBELL-WM

FIRE AND LIFE SAFETY  
FIRE ACADEMY

September 30, 2015

ORG UNIT #20005115  
  
PROGRAM MGR III  
AH55-9  
60027317  
R. POLK-WM  
STATE FIRE MARSHAL

ORG UNIT #20005128  
  
PROG MGR II  
AH50-8  
60028805  
K. KERBER-WM

ORG UNIT #20005134

ADMIN COORD I  
AH10-5  
60028211  
J. PRITCHETT-03/02/15

ORG UNIT #20005124

ENG/ASSOC ENG II  
HD65-6  
60028202  
VACANT-01/02/15

ORG UNIT #21009882

TRAIN & DEV DIR I  
AG40-6  
60028207  
R. DUNN-WM  
EXEM GRV

ORG UNIT #20005133

PROG MGR I  
AH45-7  
60028305  
P. RUSSELL-WM

ORG UNIT #20005126

PROG COORD II  
AH40-6  
60028204  
R. BUSBY-WM

TRADES SPEC IV  
KC40-4  
60028123  
J. KESTER-WM

TRADES SPEC IV  
KC40-4  
60028219  
VACANT-8/1/14

TRADES SPEC V  
KC50-5  
60028216  
J. GRIGGS-WM

TRADES SPEC IV  
KC40-4  
60028201  
R. MOORE-WM

(TEMPORARY)  
TRADES SPEC IV  
KC40-4  
61057193  
D. RAWLS-WM

(TEMPORARY)  
TRADES SPEC IV  
KC40-4  
61058355  
C. OWEN-WM

ORG UNIT #20005123

CURR COORD II  
CA20-6  
60028302  
B. WATTERS-WF

(TEMPORARY)  
ED SPEC  
CA30-4  
61058166  
K. WATSON-BF

ADMIN COORD I  
AH10-5  
60028222  
K. WHITE-BF

(TEMPORARY)  
FSO II  
JC70-4  
3 TEMPS

ORG UNIT #21000446

PROG COORD II  
AH40-6  
60028212  
C. BENNETT-WM

(TEMPORARY)  
FSO II  
JC70-4  
4 TEMPS

ORG UNIT #21012579

PROG COORD I  
AH35-5  
60028209  
R. SIMPSON

MEDIA RESRC  
SPEC II  
BG60-4  
60028304  
J. BLACK-WM

(TEMPORARY)  
EDU SPEC  
CA30-4  
61058585  
D. RICKELHOFF-WM

(TEMPORARY)  
FSO II  
JC70-4  
61041634  
F. BRANDT

(TEMPORARY)  
EDU SPEC I  
CA30-4  
VACANT-08/31/15

REGION 0  
ORG UNIT #20005122

ADMIN COORD I  
AH10-5  
60028217  
S. BUSH-BF

ADMIN ASST  
AA75-4  
60028303  
K. RIVERA-WF

ADMIN ASST  
AA75-4  
60028213  
G. EVANS-BF

REGION)  
ORG UNIT #20005131

FOOD SERV SPEC V  
KB25-5  
60028224  
C. JERMSTAD-WM

BLDG/GRDS SPEC III  
KA15-3  
60028210  
S. WILLIAMS-BM

REGION 1  
ORG UNIT #20005129

PROG COORD I  
AH35-5  
60028221  
VACANT-06/30/15

ADMIN ASST  
AA75-4  
60028220  
C. BAKER-WF

(TEMPORARY)  
FSO II  
JC70-4  
51 TEMPS

REGION 5  
ORG UNIT #21001228

PROG COORD II  
AH40-6  
60028206  
B. TURNER-WM

ADMIN ASST  
AA75-4  
60028301  
A. WILLIAMSON-WF

(TEMPORARY)  
FSO II  
JC70-4  
28 TEMPS

REGION 2  
ORG UNIT #21011927

PROG COORD I  
AH35-5  
60028122  
J. MCCARLEY-WM  
EXEM GRV

(TEMPORARY)  
FSO II  
JC70-4  
3 TEMPS

REGION 4  
ORG UNIT #20005132

PROG COORD I  
AH35-5  
60028300  
B. CASSIDY-WM  
EXEM GRV

ADMIN ASST  
AA75-4  
60028205  
C. CANUP-WF

(TEMPORARY)  
FSO II  
JC70-4  
34 TEMPS

REGION 6  
ORG UNIT #21011926

PROG COORD I  
AH35-5  
60028307  
M. TURNER-WF

(TEMPORARY)  
FSO II  
JC70-4  
47 TEMPS

ORG UNIT #20005130

PROG COORD II  
AH40-6  
60028223  
T. BROWN-BM

PROG COORD I  
AH35-5  
60028200  
D. CROSSLAND-WM  
EXEM GRV

PROG COORD I  
AH35-5  
60028121  
VACANT-08/07/15

(TEMPORARY)  
FSO II  
JC70-4  
20 TEMPS

PROG COORD I  
AH35-5  
60028208  
S. DAVIS-WM

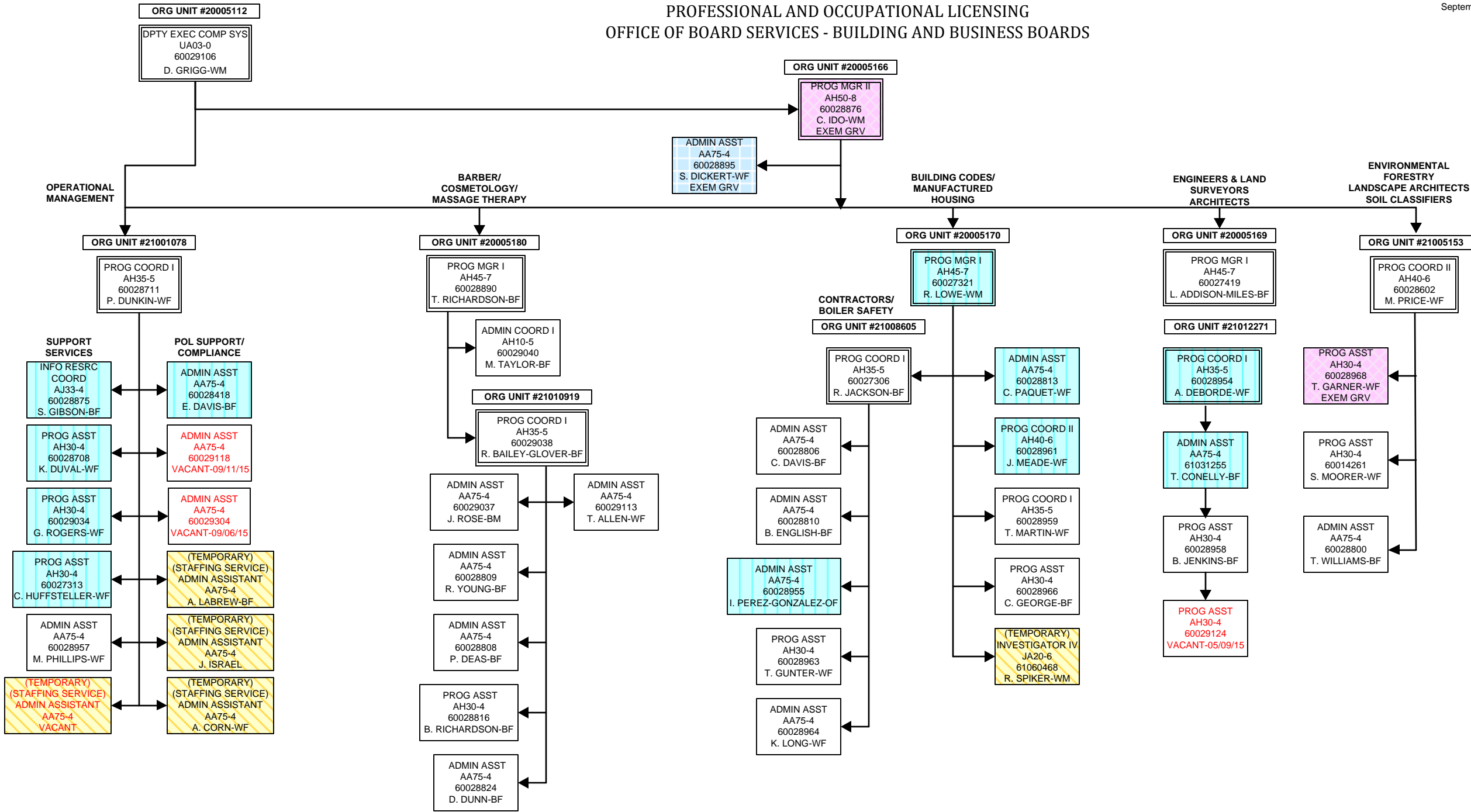
PROG COORD I  
AH35-5  
60028952  
G. PEATON-WM

(TEMPORARY)  
FSO II  
JC70-4  
46 TEMPS

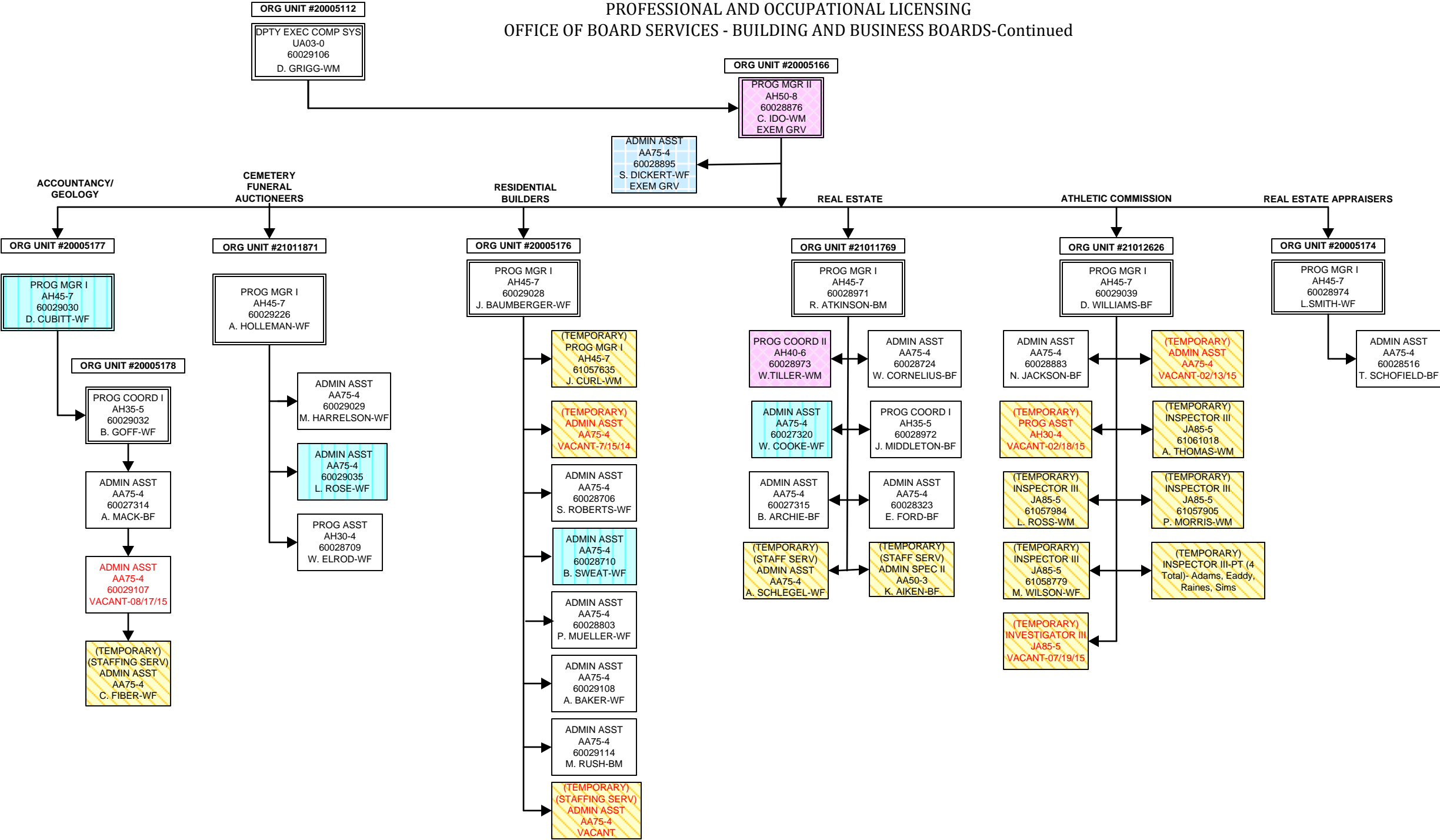
ORG UNIT #21009052

PROG COORD I  
AH35-5  
60028124  
M. GEORGE-WM  
EXEM GRV

PROFESSIONAL AND OCCUPATIONAL LICENSING  
OFFICE OF BOARD SERVICES - BUILDING AND BUSINESS BOARDS

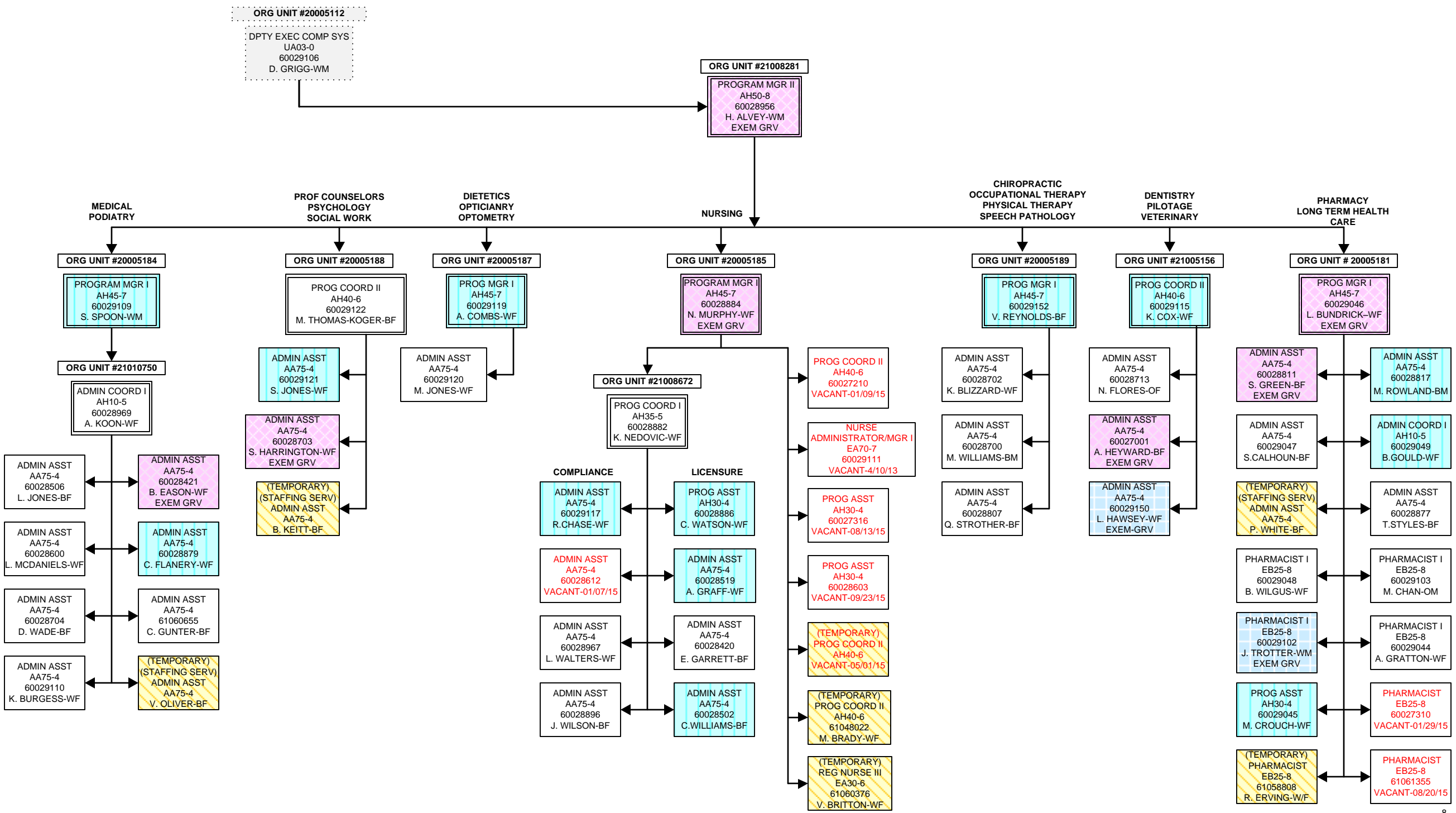


PROFESSIONAL AND OCCUPATIONAL LICENSING  
OFFICE OF BOARD SERVICES - BUILDING AND BUSINESS BOARDS-Continued





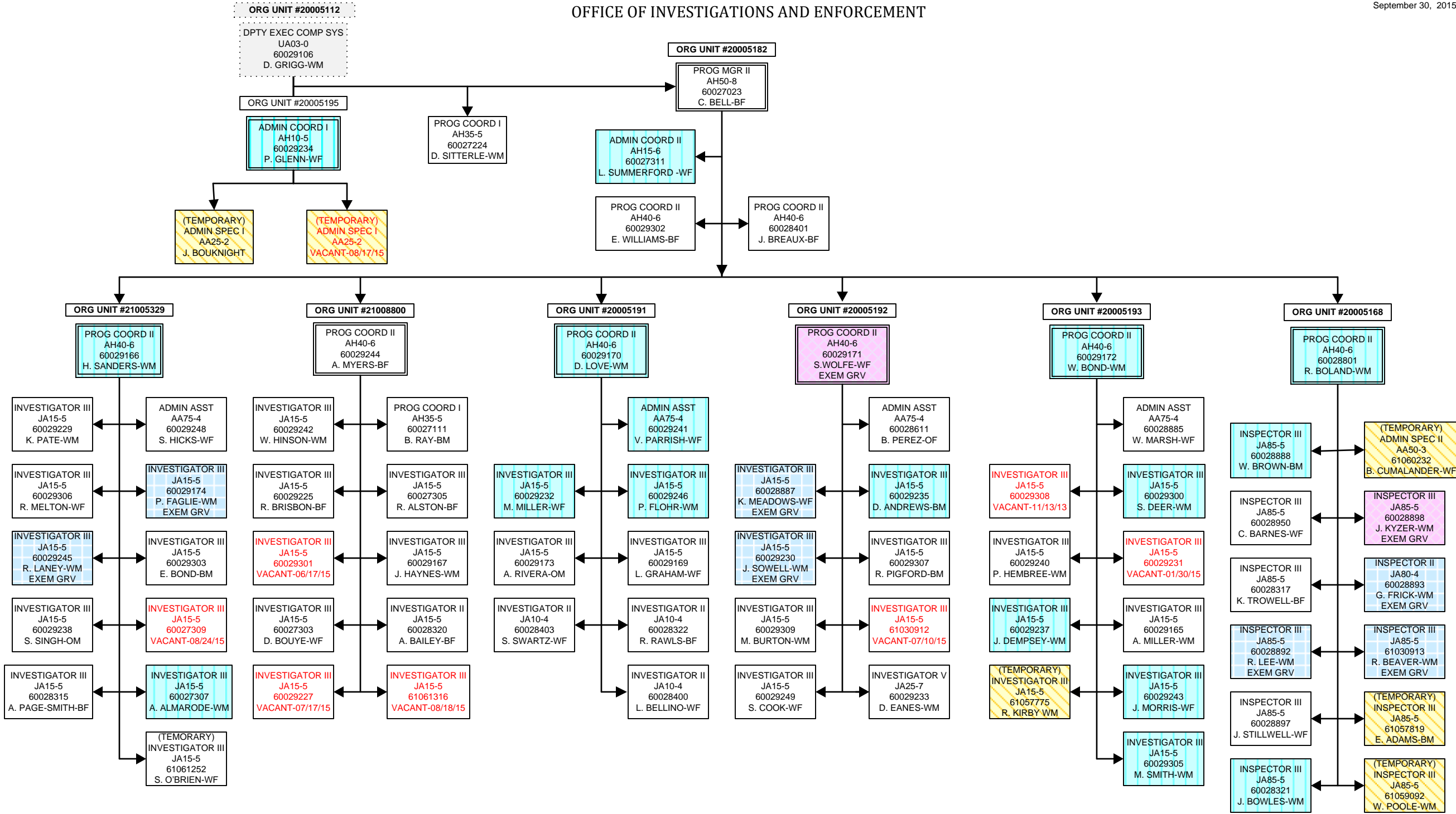
OFFICE OF BOARD SERVICES  
HEALTH AND MEDICALLY RELATED BOARDS



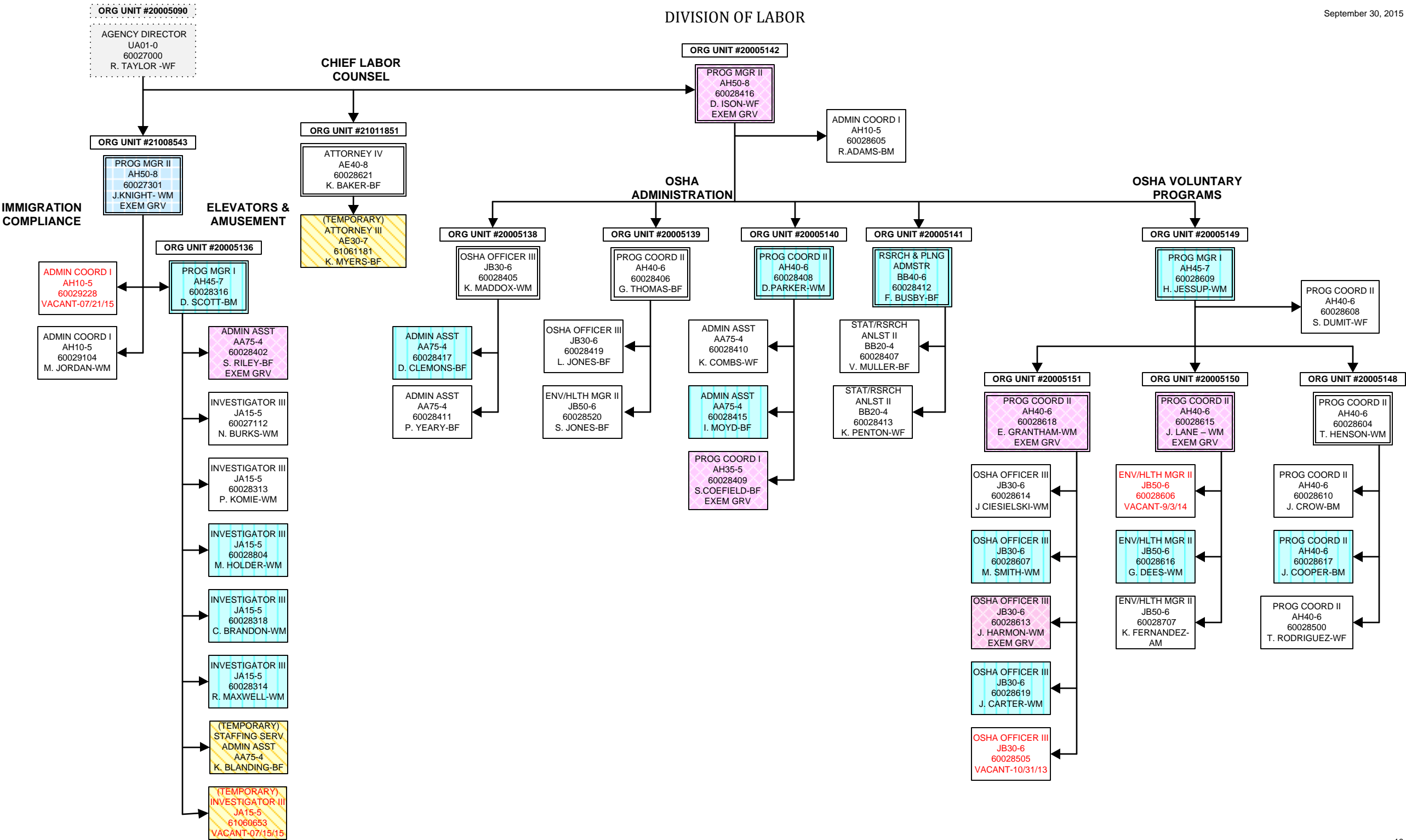


OFFICE OF INVESTIGATIONS AND ENFORCEMENT

September 30, 2015



DIVISION OF LABOR



DIVISION OF LABOR  
OSHA-COMPLIANCE

