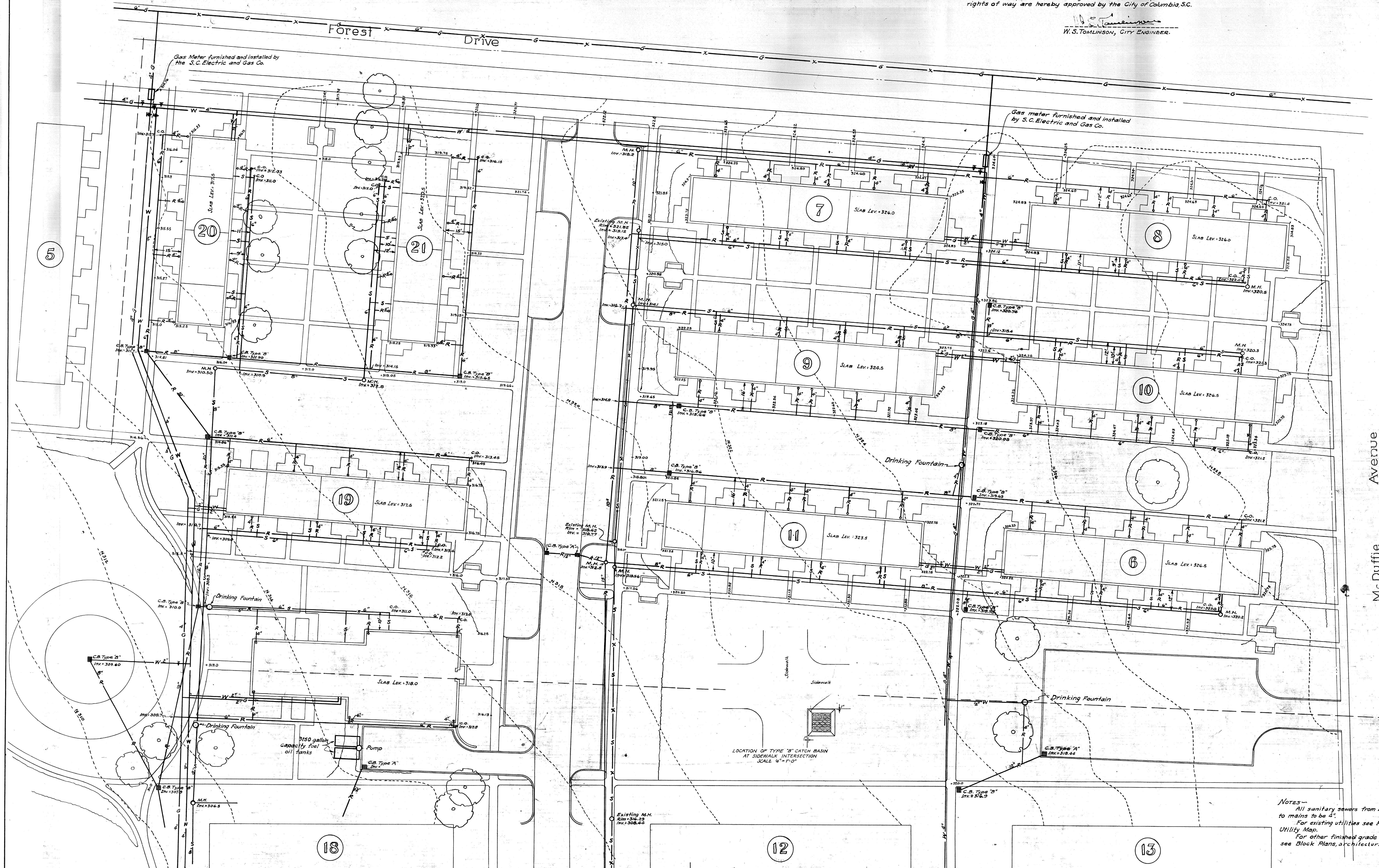
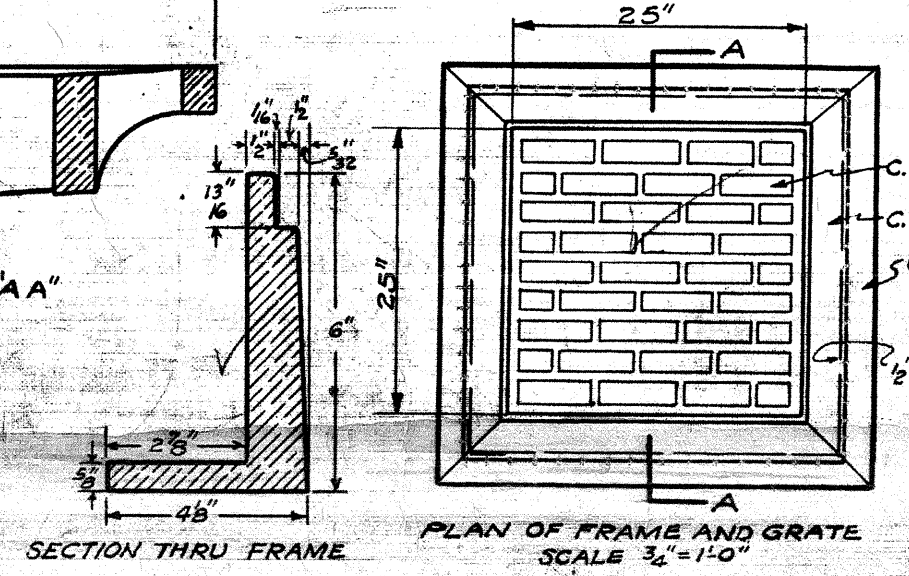
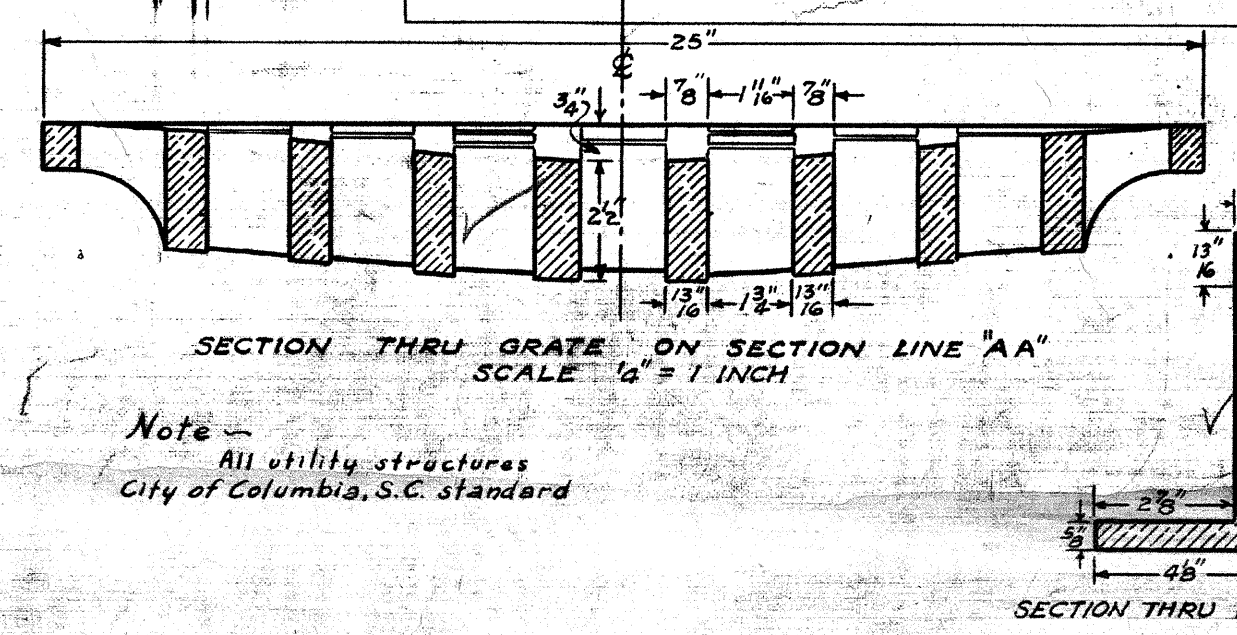
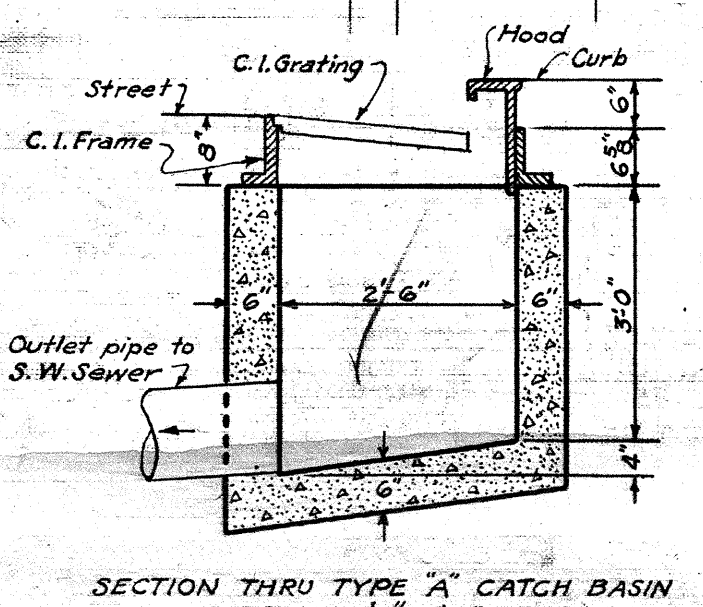


Design of streets, driveways, paving, curbing and walks dedicated for public use and layout of all utilities in public rights of way are hereby approved by the City of Columbia, S.C.

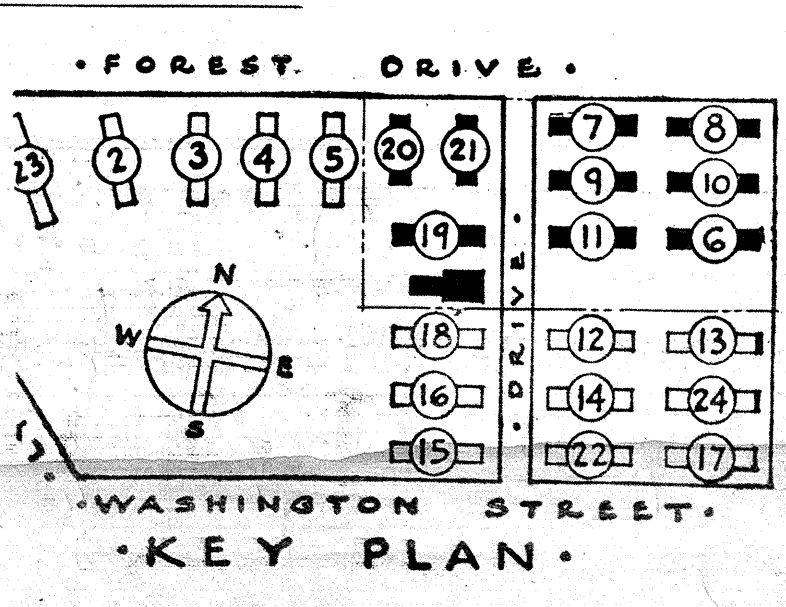
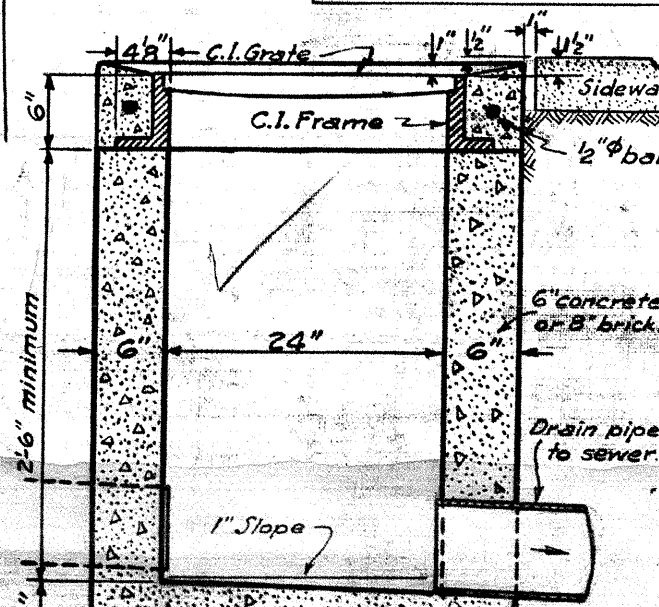
W.S. TOMLINSON, CITY ENGINEER.



Notes--
All sanitary sewers from buildings to mains to be 4'.
For existing utilities see Plan No. 3, Utility Map.
For other finished grade elevations see Block Plans, architectural.



DETAILS OF TYPE 'B' CATCH BASIN



SHEET TITLE PLAN OF BLOCK 18		SANITARY & STORM SEWERS WATER LINES, OIL TANKS & GAS LINES	
GONZALES GARDENS LOW RENT HOUSING PROJECT, COLUMBIA, S.C. 2-1			
DEVELOPED BY THE HOUSING AUTHORITY OF THE CITY OF COLUMBIA, S.C.			
UNDER LOAN CONTRACT WITH UNITED STATES HOUSING AUTHORITY			
CHECKED: DATE: 9-18-39	APPROVED BY UNITED STATES HOUSING AUTHORITY DATE: 9-18-39	ADMINISTRATOR DATE: 9-18-39	SCALE: 1/4" = 1'-0"
REVISIONS: 1. CORRECTION OF MISPRINTS DATE: 9-18-39		SHEET NO. 612	

Tomlinson Engineering Co.
Columbia, S.C.
Engineers