

SC Disaster Recovery Executive Summary



Monday, October 26, 2016

INFRASTRUCTURE

Road & Bridge Closures (DOT)

- **125 Closures**
 - 89 Road Closures
 - 36 Bridge Closures
 - Total number of road and bridge closures
- Closures have **dropped 77%** since peak (chart attached)

We re-opened six more routes yesterday, with the SC 12 in Kershaw County being the most significant. The opening of SC 12 reduced our current primary closures to twelve routes statewide. Of the remaining primary closures is US 321 (Richland). The other ten are contract work and scheduled to be completed after Thanksgiving.

The major opening in today's report is SC 6 in Orangeburg. District 1 continues to forge ahead and received tremendous support for the opening of Forest Drive and Polo Road.

We have debris operations in two counties on today, Georgetown and Richland.

Dams (DHEC)

- Dam emergency orders issued to date: **75**
- Total C1 and C2 dam assessments post-disaster to date: **651** out of 652
- as of Friday, Oct. 23, 2015, **assessments have been completed on all 652 Class One and Class Two dams** statewide by DHEC and the U.S. Army Corps of Engineers.
 - C1 – Failure may cause loss of life or serious damage to infrastructure.
 - C2 – Failure will not likely cause loss of life but may damage infrastructure.
 - C3 – Failure may cause limited property damage
- **27% Percent** of all 2,370 regulated dams have been **assessed post-disaster**
- *Failed dam list remains unchanged from Oct. 14 – list below*
- Below is a listing of the confirmed failed dams to date after the historic 2015 flooding in South Carolina.
 - 31 state regulated, 1 federally regulated, and **4 unregulated**

Aiken County

Dam Name	Class*	Dam Number	Latitude	Longitude
Corbett Lake	C3	D2052	33.648651	-81.211333
SC NONAME 02019 (Bailey Pond)	C3	D2034	33.594676	-81.285939
Able/ Cobett Pond Dam	C3	D2048	33.62181631	-81.23376209

Clarendon County

Dam Name	Class*	Dam Number	Latitude	Longitude
O E Rose Dam	C2	D3487	33.80674348	-80.09057333
Lakewood Pond Dam	C2	D3490	33.7318223	-80.09334774

Darlington County

Dam Name	Class*	Dam Number	Latitude	Longitude
Chapman's Pond Dam	C2	D3533	34.42	-79.941666
Pinedale Drive Dam	Unregulated --		Approximately 639 Pinedale Drive, 29532	
Bryant Street Detention Pont	Unregulated --		Approximately 1354 Bryant St, 29540	

Florence County

Dam Name	Class*	Dam Number	Location
McLaughlin Dam	Unregulated --		Approximately 6920 Pamplico Highway (SC 51) between Cain Lain and Charlie Cade Road

Kershaw County

Dam Name	Class*	Dam Number	Latitude	Longitude
Cook Pond Dam	C2	D1068	34.15243939	-80.77560768

Lexington County

Dam Name	Class*	Dam Number	Latitude	Longitude
Old Mill Pond Dam	C1	D0958	33.974641	-81.232641
Gibson's Pond Dam	C2	D0959	33.969067	-81.244925
Barr Lake Dam	C2	D1717	33.958512	-81.259604

Lee County

Dam Name	Class*	Dam Number	Latitude	Longitude
Clyburn	C2	D2412	34.329886	-80.302055

Orangeburg County

Dam Name	Class*	Dam Number	Latitude	Longitude
JW Smoaks Pond	C2	D3738	33.525181	-80.934540
Culler Pond (SCNONAME 38070)	C3	D3682	33.63670829	-81.15938027
Busbees Pond (Hutto's Millpond Dam)	C2	D3701	33.55656622	-81.05704327
SCNONAME 38036 (Cleveland Street)	C3	D3743	33.52294114	-80.51387012

Richland County

Dam Name(s)	Class*	Dam Number	Latitude	Longitude
Cary's Lake Dam	C1	D0026	34.048873	-80.957954
Upper Rocky Creek/ North Lake/Overcreek Rd.	C1	D0029	34.040808	-80.951982
Lower Rocky Ford Dam /Rocky Ford Lake	C1	D0028	34.036033	-80.952343
Semmes Lake Dam	Federal	Fort Jackson	34.004763	-80.941769
Beaver Dam/Wildewood Pond #2/Boyd Pond Two (Controlled release)	C2	D0567	34.096382	-80.886478
Lake Elizabeth	C1	D 0024	34.113028	-80.987693
Ulmers Pond	C1	D0581	33.968661	-80.895350
Sunview Lake Dam	C2	D0579	33.96735	-80.91163
Walden Place Dam	C1	D0572	34.11678	-80.84591
Pinewood Lake Dam	C2	D0580	33.94404929	-80.91198374
Covington Lake Dam	C2	D0545	34.13463666	-80.97464885
Murray Pond Dam	C2	D0595	33.98543068	-80.70793299
Wilson Millpond Dam	C2	D0594	33.99992669	-80.74288775
Weston Pond Dam	C3	D0593	33.883093	-80.768417
Clarkson Pond Dam	C3	D0599	33.870060	-80.826624
Duffies Pond Dam	C2	D0600	33.84433294	-80.85269049

Dam Name(s)	Class*	Dam Number	Latitude	Longitude
Small lake below Windsor Lake Sumter County	Unregulated --		Approximately 2932 Bagpipe Road, 29223	
Dam Name	Class*	Dam Number	Latitude	Longitude
Ellerbees Millpond Dam	C2	D1460	34.06843763	-80.53162143

HEALTH & WELFARE

Boiled Water Advisories

3 Boiled Water Advisories in 3 Counties: Aiken, Berkeley and Georgetown, affecting 473 people

The breakdown is as follows:

New Holland Water District in Aiken County -- affecting 370 people
Cohen's Drywall, a multi-user well in Berkeley -- affecting 15 people
Interfor, a multi-user well in Georgetown -- affecting 88 people

The Fort Jackson boiled water advisory, which was impacting over 32,000 people in Richland County, has been lifted.

Well Water Testing

DHEC has **distributed more than 3,698** well water testing kits and has **tested 1,060** well water samples.

County	Total Number of Sample Requests
Aiken	4
Allendale	1
Bamberg	4
Barnwell	1
Calhoun	5
Edgefield	1
Orangeburg	24
Saluda	4
Beaufort	0
Colleton	23
Hampton	0
Jasper	0
Abbeville	1
Anderson	2
Dorchester	15
Fairfield	13

Greenwood	4
Laurens	2
Lexington	85
McCormick	1
Newberry	4
Richland	477
Berkeley	17
Charleston	27
Chesterfield	0
Clarendon	89
Darlington	4
Dillon	2
Florence	41
Kershaw	22
Lee	6
Marlboro	0
Marion	0
Sumter	113
Cherokee	0
Greenville	0
Oconee	0
Pickens	2
Spartanburg	2
Union	0
Chester	2
Lancaster	1
York	4
Horry	15
Georgetown	8
Williamsburg	34

TOTAL 1060

Shelters

All shelters for response to the flood event are closed.

0 shelters 0 occupants

Tetanus Vaccines

DHEC has administered **3,593 tetanus vaccines** via the mobile at 59 sites in 15 counties:

Calhoun
Charleston
Dorchester
Orangeburg
Lexington

Sumter
Clarendon
Richland
Florence
Kershaw

Horry
Darlington
Lee
Georgetown
Williamsburg

FEMA & EMD

Disaster Recovery Centers (DRC)

Public Disaster Assessment by County

Public Assistance (PA)

Individual Assistance (IA)

- 63,792 of FEMA Registrants
- 15,363 approved registrants
- \$47,663,441.79 approved award
- \$46,169,429.02 distributed
- 28,070 ineligible registrants

County	Designated Date	Total Valid Registrations	IHP Approved	IHP Approved Award	IHP Disbursed	IHP Ineligible
Bamberg (County)	10/9/2015	101	18	\$47,821.11	\$45,783.33	43
Berkeley (County)	10/6/2015	3211	751	\$2,007,974.70	\$1,888,278.52	1,695
Calhoun (County)	10/7/2015	446	103	\$189,070.88	\$170,809.11	225
Charleston (County)	10/5/2015	6086	1,300	\$3,231,373.32	\$3,097,062.66	3,019
Clarendon (County)	10/6/2015	3059	729	\$1,449,670.86	\$1,397,375.96	1,626
Colleton (County)	10/9/2015	483	140	\$327,153.82	\$275,569.15	186
Darlington (County)	10/7/2015	1097	272	\$570,551.80	\$506,968.18	538
Dorchester (County)	10/5/2015	2477	745	\$2,721,397.13	\$2,600,151.55	1,013
Fairfield (County)	10/20/2015	173	15	\$21,214.20	\$12,449.89	90
Florence (County)	10/7/2015	3883	1,095	\$3,037,524.89	\$2,829,504.82	1,787
Georgetown (County)	10/5/2015	3340	813	\$4,098,884.72	\$3,816,155.43	1,646
Greenwood (County)	10/9/2015	191	66	\$238,080.46	\$229,424.44	56
Horry (County)	10/5/2015	3673	764	\$2,165,837.28	\$2,032,962.56	1,845
Kershaw (County)	10/7/2015	954	200	\$465,954.89	\$436,473.29	469

Lee (County)	10/7/2015	1459	332	\$641,178.38	\$590,348.09	835
Lexington (County)	10/5/2015	3342	995	\$3,618,241.68	\$3,499,493.13	1,177
Marion (County)	10/20/2015	192	37	\$44,374.78	\$21,216.54	109
Newberry (County)	10/13/2015	113	17	\$44,449.30	\$44,449.30	64
Orangeburg (County)	10/5/2015	4255	814	\$1,439,178.52	\$1,356,643.26	2,324
Richland (County)	10/5/2015	14798	3,948	\$11,645,239.07	\$11,229,403.02	5,929
Sumter (County)	10/6/2015	8053	2,151	\$8,193,979.82	\$7,954,746.50	3,822
Williamsburg (County)	10/5/2015	4700	1,260	\$4,206,714.80	\$3,972,762.30	2,355
Total:		66086	16,565	\$50,405,866.41	\$48,008,031.03	30,853

NATIONAL GUARD & LAW ENFORCEMENT

SCNG COMMANDER'S CARD [251200OCT15]

JOC Email: ng.sc.scang.mbx.scjocops@mail.mil

EMERGENCY OPERATING CONDITION

OPCON 4

ALERT - POSSIBLE THREAT

Missions Assigned**148****Missions Pending****10****Missions Started****24****Missions Completed****114(77%)**

Total PAX: 483

Total SAD: 414

Total AGR: 44

Total ADOS: 10

Total Tech: 3

Total Title 10: 0

Total State Guard: 0

Available on IDT: 3

Total CIV : 9

Total NC: 140

Total Missions: 368

Tasked Missions: 23

Pending Missions: 0

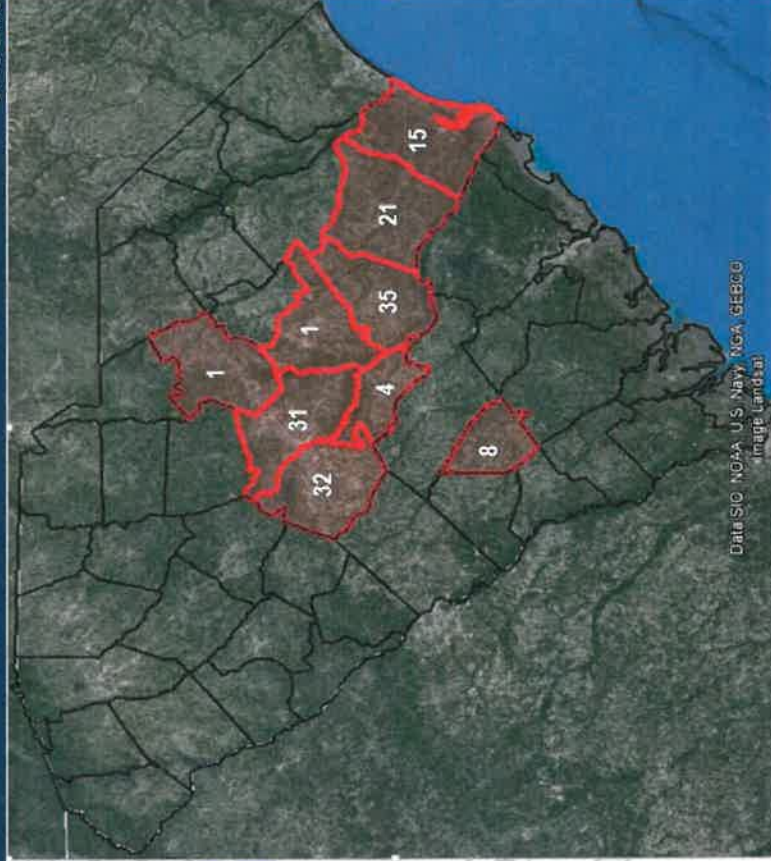
Active Missions: 18

Completed Missions: 327

Total Cumulative SAD Cost

Estimate: \$7,682,656

As of 250700OCT15

**SOUTH CAROLINA NATIONAL GUARD RESPONSE STATISTICS**

- 28 lives saved by Helicopter Aquatic Rescue Teams
- 11 lives saved by boat rescue
- 170 lives saved by High Water Vehicle Transport Vehicles
- More than 3,000 individuals evacuated using High Water Transport vehicles
- Nearly 1.8 million gallons of water purified to support 3 hospitals in Columbia, preventing patients from need to evacuate
- Responded to 77 Fire Calls with the City of Columbia
- 60,000 gallons water pumped from flooded downtown Columbia
- Transported 92,000 Red Cross Meals and MREs
- Transported 16,500 gallons bulk water
- Transported more than 70,000 bottles of water
- Transported 526,000 empty small sandbags
- Transported 80 pallets in support of operations
- Transported over 130,000 filled small sandbags to 15 counties

- Transported over 3,500 tons of raw sand
- 260,000 miles from military vehicles tracked
- Filled and transported 7,000 one-ton sandbags
- Manned 138 Traffic Control/Security Points
- Conducted over 2,000 Wellness Checks
- 19 Point of Distribution sites established for water and supply distribution
- Provided security for 5 shelters
- Assisted in 2 dam saves and Inspected 10 dams
- Provided oversight and engineer assets to the Columbia Canal Repair
- Transported 35,000 tons of large rocks to Columbia Canal
- Sling-loaded 100 one-ton sandbags & construction equipment to Columbia canal
- 3-15 OCT logged over 290 Army Aviation flight hours
- Conducted more than 125 emergency road restoration missions to support public safety and mobility

Engineering Missions**•Clarendon**

- 35 Missions Assigned
- 2 Missions Started
- 10 Missions in the 'Queue'
- 23 Missions Completed

•Georgetown

- 15 Missions Assigned
- 2 Missions Started
- 6 Missions in the 'Queue'
- 7 Mission Completed

•Sumter

- 1 Missions Assigned
- 0 Missions Started
- 0 Missions in the 'Queue'
- 1 Mission Completed

•Williamsburg

- 21 Missions Assigned
- 0 Missions Started
- 4 Missions in the 'Queue'
- 17 Mission Completed

•Calhoun

- 4 Missions Assigned
- 0 Missions Started
- 0 Missions in the 'Queue'
- 4 Missions Completed

•Lexington

- 32 Missions Assigned
- 2 Missions Started
- 1 Missions in the 'Queue'
- 29 Missions Completed

•Richland

- 31 Missions Assigned
- 1 Missions Started
- 3 Missions in the 'Queue'
- 27 Missions Completed

•Kershaw

- 1 Missions Assigned
- 0 Missions Started
- 0 Missions in the 'Queue'
- 1 Missions Completed

•Bamberg

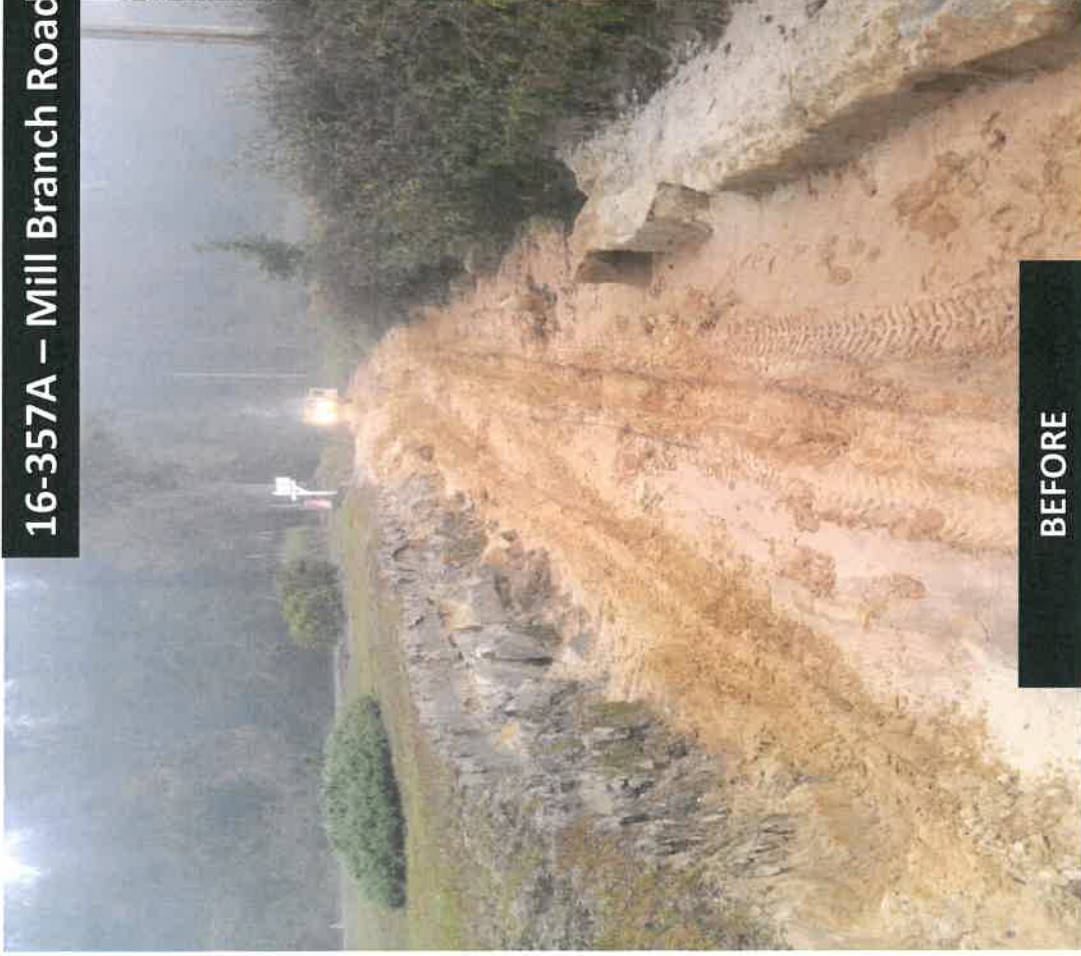
- 8 Missions Assigned
- 3 Missions Started
- 0 Missions in the 'Queue'
- 5 Missions Completed

EN MISSION STATUS

AS OF 251200OCT15

County	Missions Assigned	Mission Started	QUEUE Pending	Missions Completed
Clarendon	35	2	10	23
Georgetown	15	2	6	7
Sumter	1	0	0	1
Bamberg	8	3	0	5
Williamsburg	21	0	4	17
Calhoun	4	0	0	4
Lexington	32	2	1	29
Richland	31	1	1	29
Kershaw	1	0	0	1
Total:	148	10	22	116 (78%)

16-357A – Mill Branch Road – Clarendon County



BEFORE



AFTER



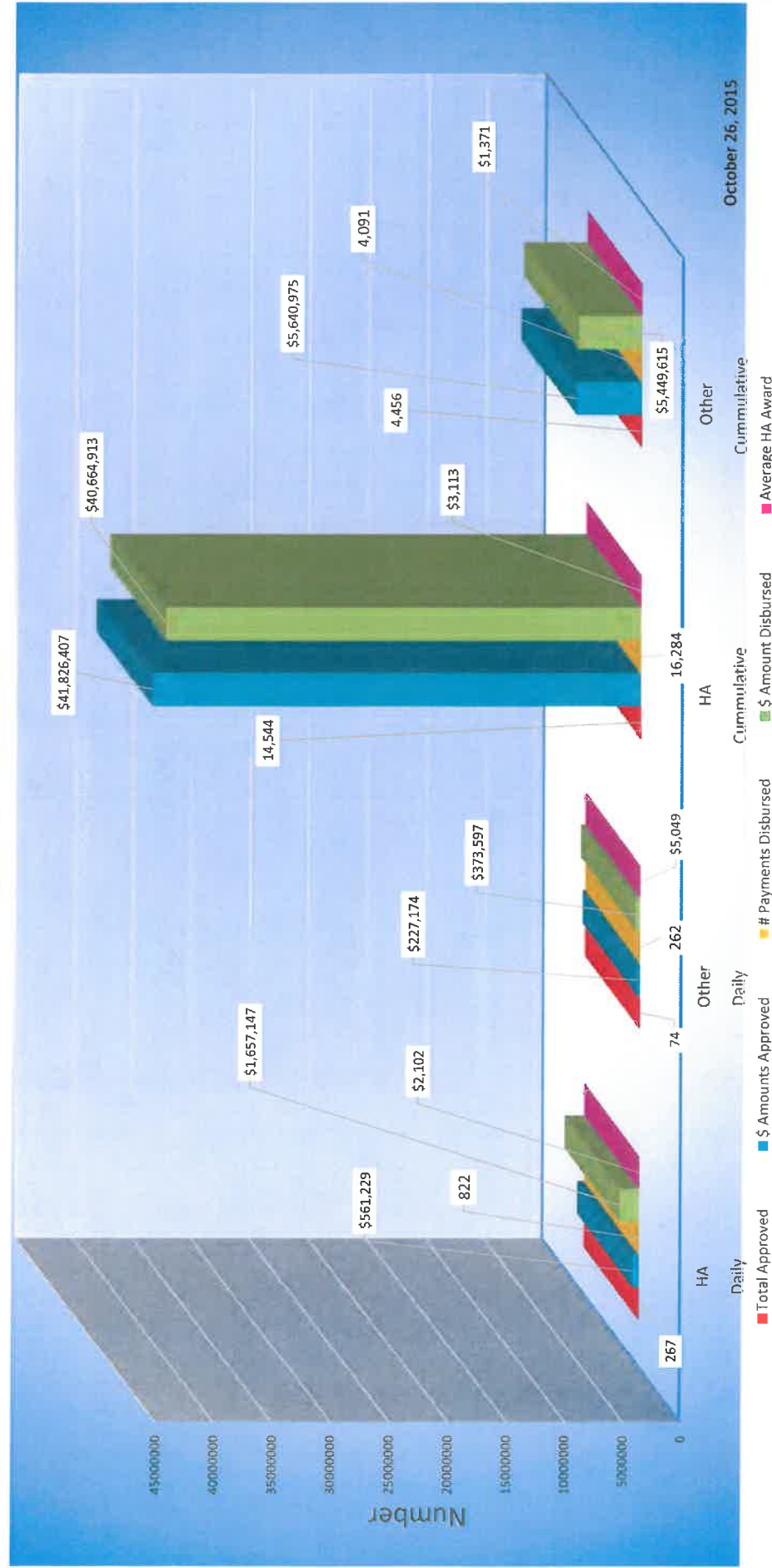
BEFORE



AFTER

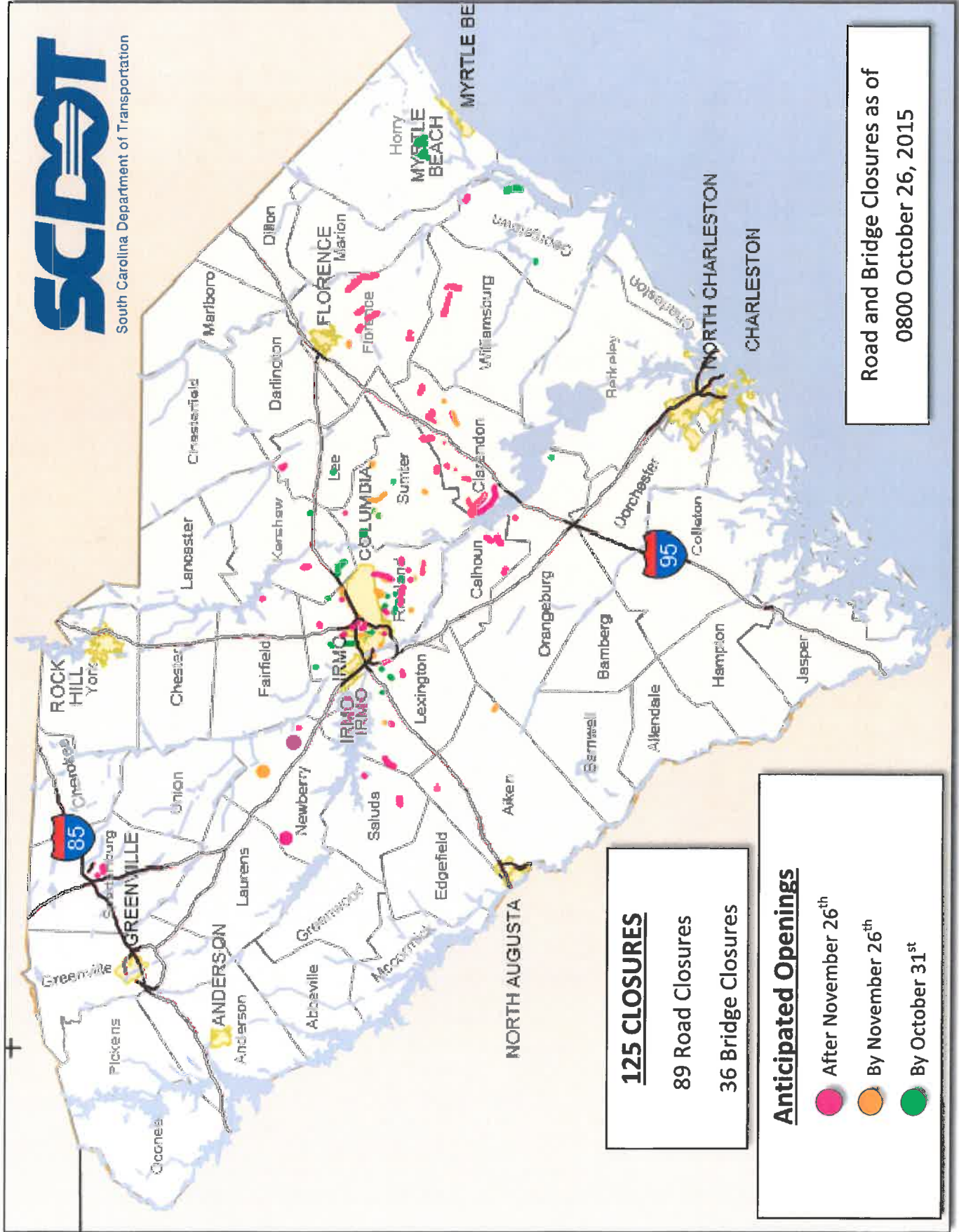
16-378A – Mill Dam Road – Williamsburg County

IHP Eligibility Status Report FEMA-4241-DR-SC





South Carolina Department of Transportation



125 CLOSURES

89 Road Closures

36 Bridge Closures

Anticipated Openings

● After November 26th

● By November 26th

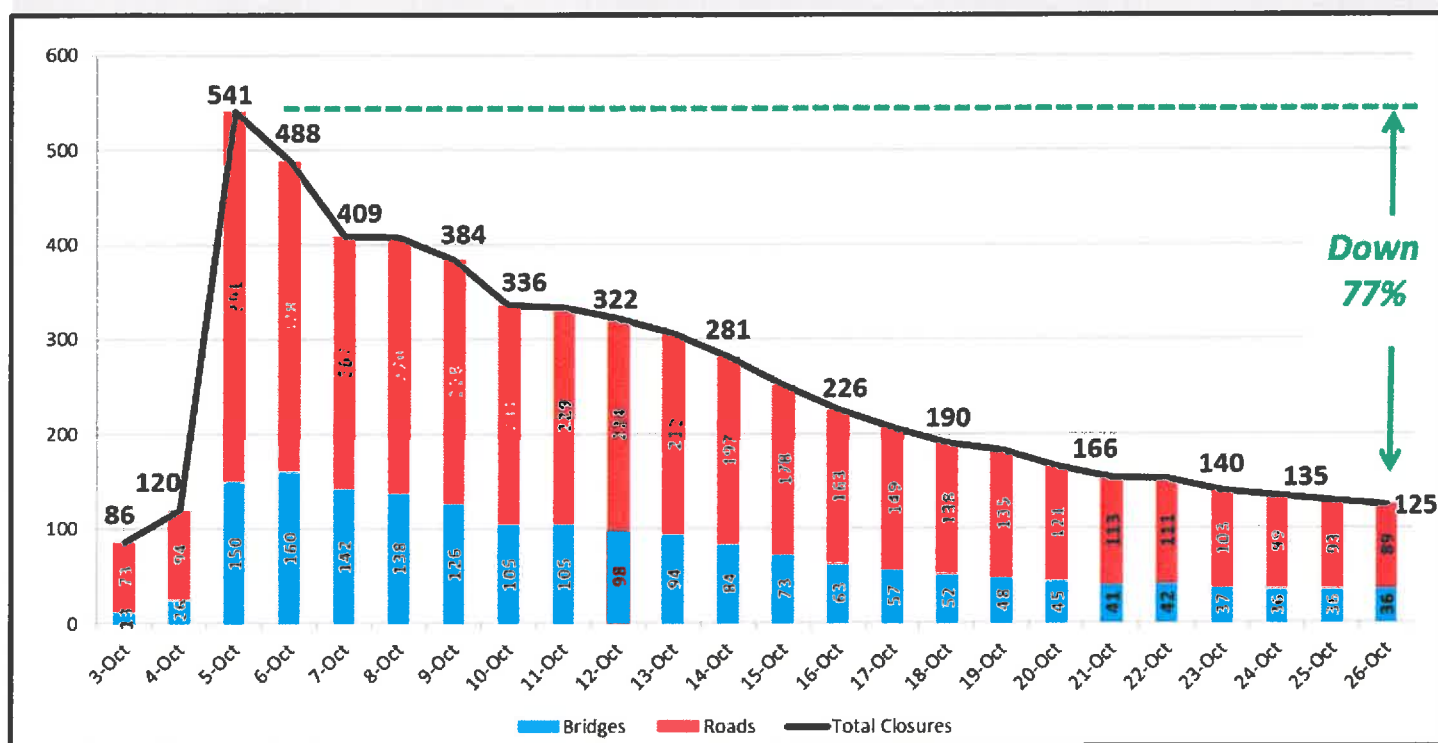
● By October 31st

Road and Bridge Closures as of
0800 October 26, 2015

Resources Currently Deployed on Recovery Operations

- ◇ Recovery efforts in the impacted areas continue to be staffed with additional personnel and extended hours of operation. In counties that were not impacted, or where all closures have been restored, crews are working on storm related damage and routine maintenance operations.
- ◇ 21 Highway/Bridge Contractors have been engaged to assist with 62 different “emergency/spot repairs” in 13 counties. 20 of the firms are SC firms, 1 GA firm. 3 of the firms are DBEs.
- ◇ 6 Debris Removal Contractors have been engaged. 2 are SC firms. 35 Debris Collections Trucks & Trailers are operating.
- ◇ SCDOT Call Center is operating 6 am—7pm daily. There have been over 3.5 Million visits to the

Closures on the State-Maintained System



All Interstates are OPEN.

11 Primary Routes remain CLOSED statewide. Richland: US 21, US 321, SC 48 & SC 769. Clarendon: US 15, US 301 & US 521 (partial). Newberry: US 176. Florence: SC 51. Sumter: US 76 Business (partial). Williamsburg: SC 512.

Majority of the current closures are on the Secondary System. Priority is placed on high volume Secondaries, routes around schools, fire departments and other critical access areas.



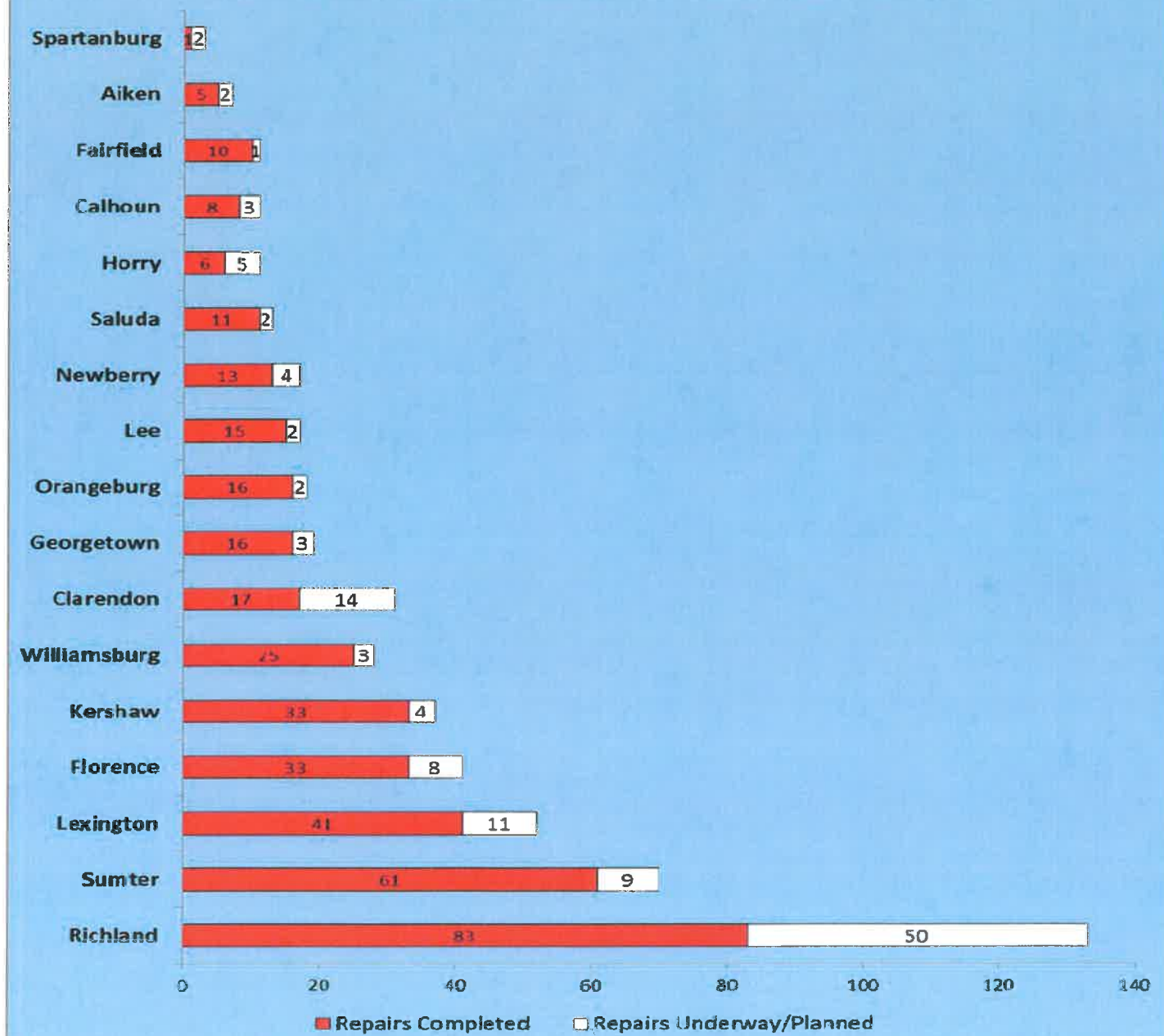
Infrastructure Recovery Daily Report

Monday, October 26, 2015

All repairs to the state-maintained system have been completed in 13 Counties to date:

Abbeville County, Allendale County, Anderson County, Bamberg County, Berkeley County, Charleston County, Colleton County, Darlington County, Dorchester County, Greenwood County, Laurens County, Marion County, and McCormick County.

Repair Status for State-Maintained Road & Bridges



Please visit us at www.scdot.org / Storm Resources in order to get an up-to-date listing of road closures and anticipated repair schedules by County. Updates are also provided on Facebook & Twitter.

Transit

Other Modes of Transportation

operations



have returned to **NORMAL OPERATIONS** with 2 exceptions:

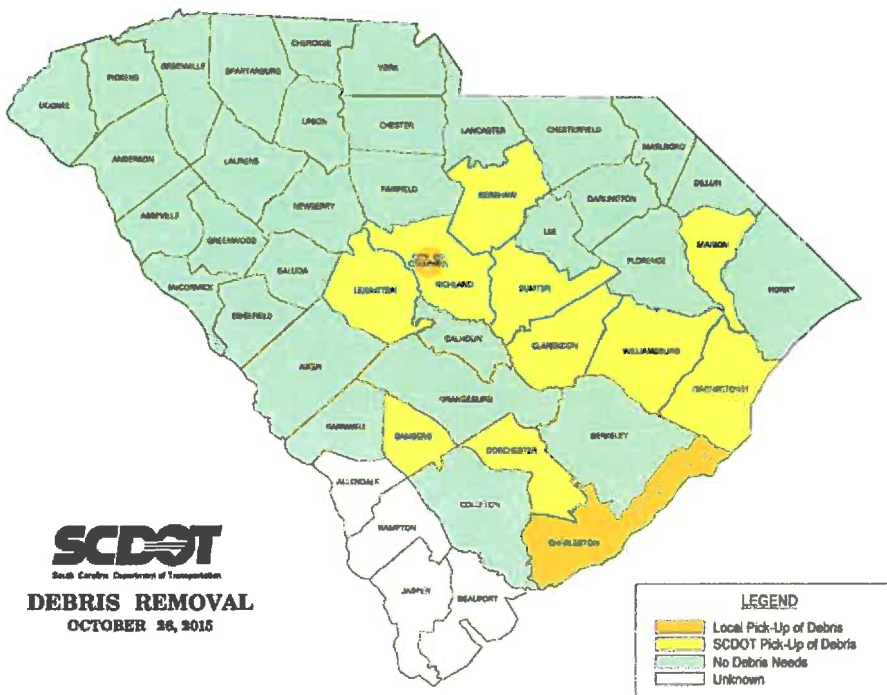
- ◇ Central Midlands RTA (Comet) has detours on Route 47 (Eastover) and Route 88 (Garner's Ferry to Broad River)
- ◇ **Airports, Ports, Passenger Rail and Short-Line Rail are all operating NORMALLY.**
- ◇ **Norfolk Southern:** Columbia-to-Spartanburg Line (W line) is projected to be out of service until the week of Nov 9 due to bridge repairs. Traffic is being rerouted to accommodate local service with minor delays expected.
- ◇ **CSX:** Eastover Subdivision (Columbia, SC to Orangeburg, SC) is now open but has delayed service. CSX esti-

Debris Removal Operations

Collected to Date: approx. 777 loads
(38,549 CY)

Over the next 2 days, SCDOT Debris Removal Contractors will be working in:

- ◇ **Berkeley County** College Park Estates on Columbia Road and Oxford Road in the Town of Ladson;
- ◇ **Dorchester County** in the Summerwood, and Tranquil Estates subdivisions, and the Ashborough, Corey Woods, Gadsden Acres, Neighbor Woods, Quail Arbor, and Spruce-woods neighborhoods;
- ◇ **Georgetown County** Town of Andrews on Cherokee Road, Comanche Road, Gapway Road and Highway 51;
- ◇ **Lexington County** in the Coldstream and Pine Glenn areas;
- ◇ **Richland County** in the Arcadia Lakes, Congaree Church, and Forest Acres areas; **and**
- ◇ **Sumter County** in the Dogwood Drive, Gin Branch, Ketch, Pepperidge, and Tanglewood areas.



SCDOT is leading Debris Removal in 10 Counties and 7 Municipalities : Bamberg, Clarendon, Dorchester, Georgetown, Kershaw, Lexington, Marion, Richland, Sumter and Williamsburg plus the City of Sumter, Town of Summerville, City of Denmark, Town of Kingstree, Town of Andrews, City of Georgetown and Town of Hemingway.

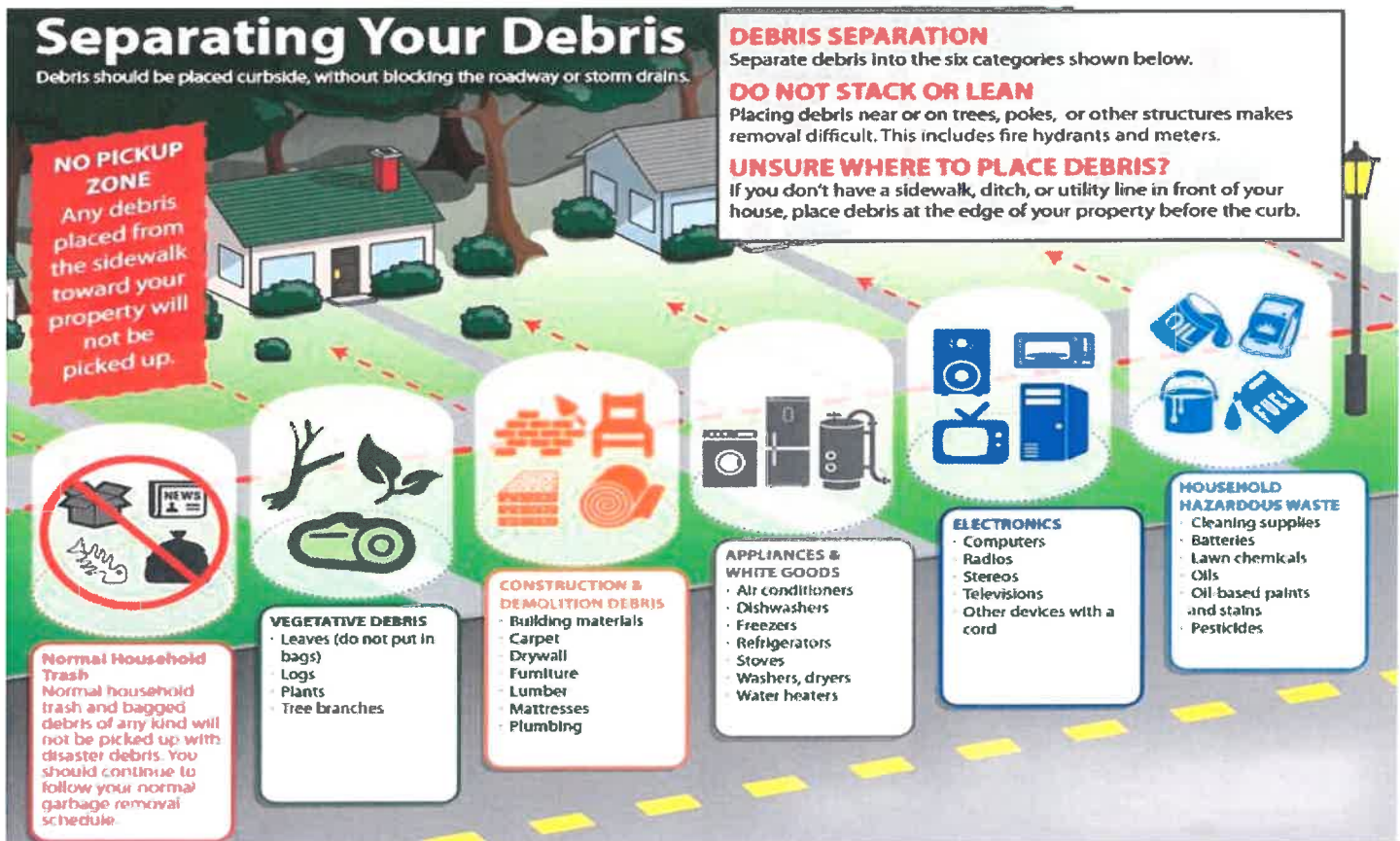
Charleston County and the **City of Columbia** are leading the Debris Removal efforts within their respective areas.

Red text indicates agreements being finalized.



Requested Assistance

Request continued assistance messaging that communities should continue to bring the storm-related debris to the roadside and sort it into the 6 categories.



	Daily	Cumulative	Application Period ends: 12/4/2015				Total
Registrations Total	446	66,433	Number of Designated Counties				22
Registrations (Designated Counties)	444	66,115					24
Registrations (Undesignated Counties)	2	318					
Web Registrations *	142	18,537					
Mobile Registrations *	28	4,639					
Individuals and Households Program (IHP)							
	Daily	Cumulative		Daily	Cumulative	\$	
			IHP Max Awards	0	81	\$2,673,000.00	
\$ Amount Approved	\$620,853.22	\$50,357,721.14					
\$ Amount Disbursed	\$1,864,538.83	\$47,979,067.38	Shelters	0	0		
# of Payments Disbursed	1,004	21,379	Rental Resources: Statewide	n/a	n/a		
				Owners	Renters		
Referrals	377	57,097	Rental Assistance	4,561	2,440		
No Decision (Insurance)	39	3,997	Destroyed Properties	8	8		
Pending	318	3,504		Received	Reviewed		
Withdrawn	104	2,255	Access/Functional Needs	1,419	268		
Ineligible	651	30,796					
Approved	314	16,545					
Housing Assistance (HA)			Other Needs Assistance (ONA)				
	Daily	Cumulative		Daily	Cumulative		
Eligibility Rate: Referrals **		26.68%	Eligibility Rate: Referrals **		19.87%		
Eligibility Rate: Decisions ***		27.72%	Eligibility Rate: Decisions ***		22.55%		
\$ Amount Approved	\$561,229.03	\$44,297,969.62	\$ Amount Approved	\$59,624.19	\$6,059,751.52		
\$ Amount Disbursed	\$1,657,147.17	\$42,322,060.27	\$ Amount Disbursed	\$207,391.66	\$5,657,007.11		
# of Payments Disbursed	822	17,106	# of Payments Disbursed	182	4,273		
Average HA award		\$3,045.79	Average ONA award		\$1,359.91		
Referrals	364	54,520	Referrals	148	22,430		
No Decision (Insurance)	40	4,158	No Decision (Insurance)	18	1,381		
Pending	299	2,047	Pending	107	2,672		
Withdrawn	94	2,073	Withdrawn	49	1,086		
Ineligible	657	31,698	Ineligible	256	12,835		
Approved	267	14,544	Approved	74	4,456		
			total reg			paid	Cumulative
			Funeral Assistance		50	2	\$ 14,000.00
Inspection Services (IS)			SBA	Home Loans	Business	EIDL	Total
	Daily	Cumulative	Applications:				
Inspections Issued	382	52541	Issued	29,230	6,732	84	36,046
Returned to FEMA	1443	51192	Received	2,983	261	27	3,271
Outstanding		1349	Loans Approved	471	11	2	484
% Complete		97.43%	Dollars Approved	\$12,623,400	\$249,000	\$69,600	\$12,942,000
QC's Performed		2412					
Inspectors in the Field		194					
Disaster Unemployment Assistance - Claims							
			Week Ending 0				
	New	Total				New	Total
Received	0	0	Disapproved/Withdrawn			0	0
Approved	0	0					
Pending	0	0	Dollars Disbursed				\$0.00
* Registrations included as a part of Total Registrations							
** Eligibility Rate based on Referrals to the program found in respective corporate report							
*** Eligibility Rate based upon Decisions made for that program; pending are the only referrals where no decision has yet been made							

County Registration Status					
Designated Counties		Daily	Cumulative		
Bamberg (County)	2	101			
Berkeley (County)	43	3,211			
Calhoun (County)	6	446			
Charleston (County)	41	6,093	Undesignated Counties	Daily	Cumulative
Clarendon (County)	13	3,062	Abbeville (County)	0	13
Colleton (County)	21	483	Aiken (County)	0	36
Darlington (County)	30	1,097	Allendale (County)	0	2
Dorchester (County)	28	2,477	Anderson (County)	0	12
Fairfield (County)	4	173	Barnwell (County)	0	11
Florence (County)	35	3,886	Beaufort (County)	0	6
Georgetown (County)	12	3,341	Cherokee (County)	0	3
Greenwood (County)	1	191	Chester (County)	1	2
Horry (County)	24	3,675	Chesterfield (County)	0	12
Kershaw (County)	10	954	Dillon (County)	0	40
Lee (County)	9	1,461	Edgefield (County)	0	7
Lexington (County)	21	3,344	Greenville (County)	0	27
Marion (County)	2	193	Hampton (County)	0	8
Newberry (County)	2	113	Jasper (County)	0	1
Orangeburg (County)	29	4,256	Lancaster (County)	0	4
Richland (County)	62	14,802	Laurens (County)	0	53
Sumter (County)	32	8,056	Marlboro (County)	0	11
Williamsburg (County)	17	4,700	McCormick (County)	0	2
			Pickens (County)	0	6
			Saluda (County)	0	23
			Spartanburg (County)	0	30
			Statewide	0	1
			Union (County)	0	4
			York (County)	0	3
Total	444	66,115	Total	1	317

Open Disaster Recovery Centers (DRCs)						
Location	City	County	Opening Date	Closing Date	Daily	Cumulative
MDRC #1 Main Library Augusta Rd	Lexington	Lexington	10/8/15	10/10/15	0	25
DRC#2 Irmo Library	Lexington	Columbia	10/8/15		24	711
MDRC #3 Beck Rec. Center	Georgetown	Georgetown	pending		37	37
DRC #4 Civic Center	Sumter	Sumter	10/8/15		74	1757
MDRC #5 Weldon Auditorium 7 Maple Street classro	Manning	Clarendon	10/9/15		25	602
DRC #6 Government Building 8423 Old State Rd	Holly Hill	Orangeburg	10/9/15		21	591
DRC #7 Richland Library Southeast	Columbia	Richland	10/10/15		52	916
MDRC #8 Richland Library Eastover	Eastover	Richland	10/10/15		15	417
MDRC #9 Florence Evans Dining Hall Hiliness Conf	Lake City	Florence	10/13/15		27	1150
MDRC #10 Kershaw Blaney Fire Dept	Elgin	Kershaw	10/13/15		4	125
MDRC #11 North Strand Park and Recreation CTR	Little River	Horry	10/13/15		13	278
MDRC #12 Seacoast Church 301 East 5th North Stree	Summerville	Dorchester	10/14/15		40	189
MDRC #13 South Strand Recreation Center	Myrtle Beach	Horry	10/13/15		8	155
MDRC #14	St George	Dorchester			0	0
MDRC #15 Cayce West Columbia Library	Cayce	Lexington	10/12/15		13	217
MDRC #16 Orangeburg Aquatic	Orangeburg	Orangeburg	10/12/15		26	258
MDRC #17 SC Nat Guard Armory	Darlington	Darlington	10/12/15		11	177
MDRC #18 Recreation CTR	Bishopville	Lee	10/12/15		13	188
MDRC #19	Columbia	Richland	10/15/15		24	282
MDRC #20 Dept of Public Works	N. Charleston	N. Charleston	10/15/15		26	256
MDRC #21 Bees Landing Recreation Ctr	Columbia	Richland	10/16/15		28	154
MDRC #23 Tractor Trailor Company	Georgetown	Georgetown	10/14/15		0	697
MDRC #24 Livingston	Livingston	Orangeburg	10/17/15		16	92
MDRC #25 Kingstree	Kingstree	Williamsburg	10/17/15		34	405
MDRC # 26 Temple of Faith Church	Gadsden	Richland	10/19/15		17	171
MDRC#27 304 Agnes Street	St. Matthews	Calhoun	10/21/15		6	28
MDRC#28	Walterboro	Colleton	10/27/15		0	0
MDRC 29	Bamberg	Bamberg	TBD		0	0
MDRC 30	Newbury	Newbury	TBD		0	0
MDRC 31	Goose Creek	Berkley	10/25/15		0	0
MDRC 32	Andrews	Bamberg	10/24/15		4	4
MDRC 33	Huger	Berkley	10/25/15		0	0
				Total	558	9966