
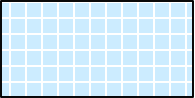
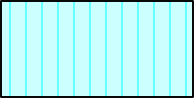



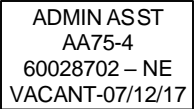
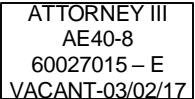


SOUTH CAROLINA
DEPARTMENT OF LABOR, LICENSING AND REGULATION
ORGANIZATIONAL CHART

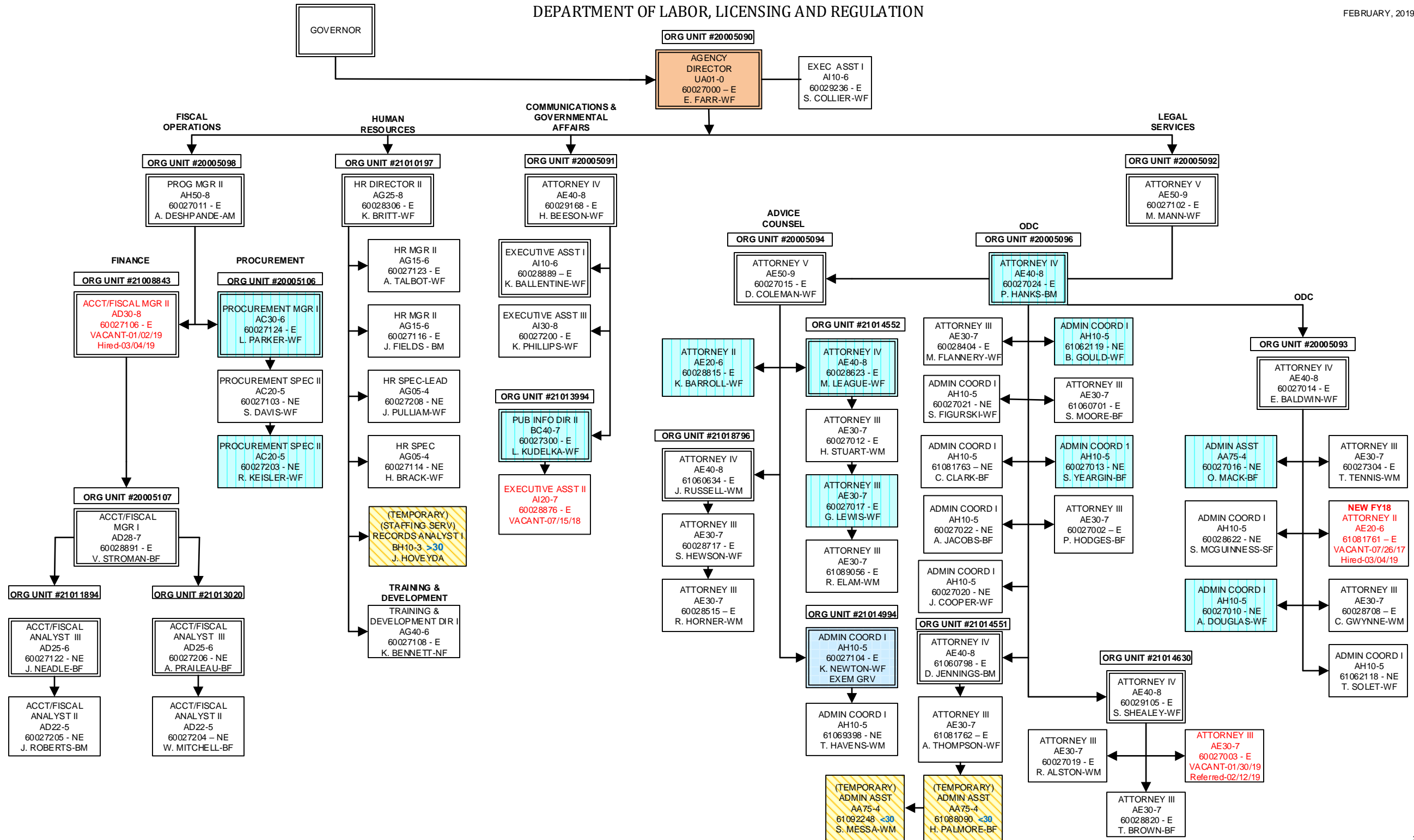
FEBRUARY 2019

SOUTH CAROLINA
DEPARTMENT OF LABOR, LICENSING AND REGULATION
ORGANIZATIONAL CHARTS

Light Orange Square		Employee Exempt from Grievance
Light Blue Square		Employee returned after TERI or Retirement; Exempt Grv
Turquoise Vertical Stripe		Employee eligible to retire within 5 years by service or age
White Solid Red Letters		Vacant Position-Vacancy Date
Yellow Diagonal Stripe		Temporary Employee
Dark Pink Outline		Borrowed position
NE Designation		Non-exempt position
E Designation		Exempt position

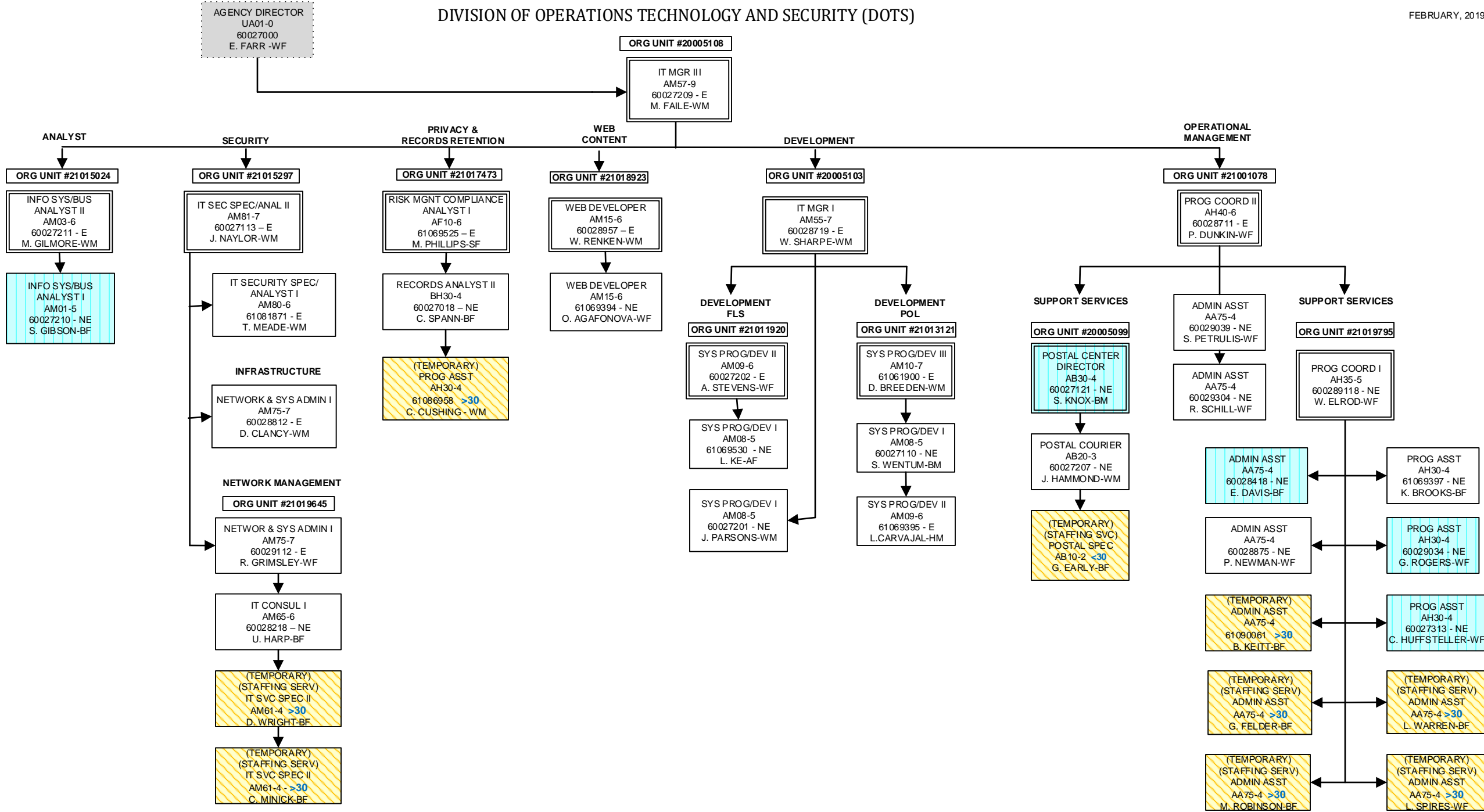
DEPARTMENT OF LABOR, LICENSING AND REGULATION

FEBRUARY, 2019



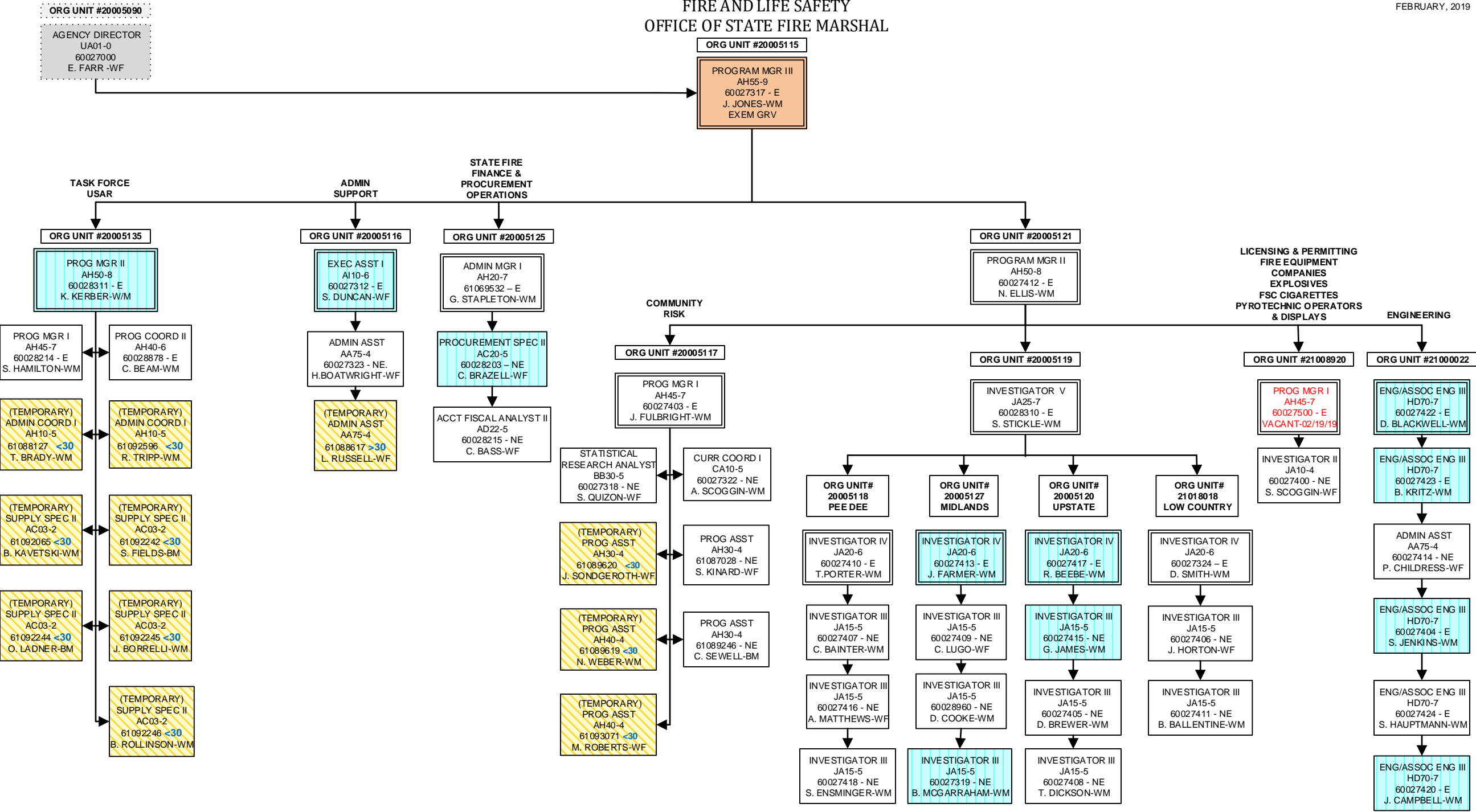
DIVISION OF OPERATIONS TECHNOLOGY AND SECURITY (DOTS)

FEBRUARY, 2019

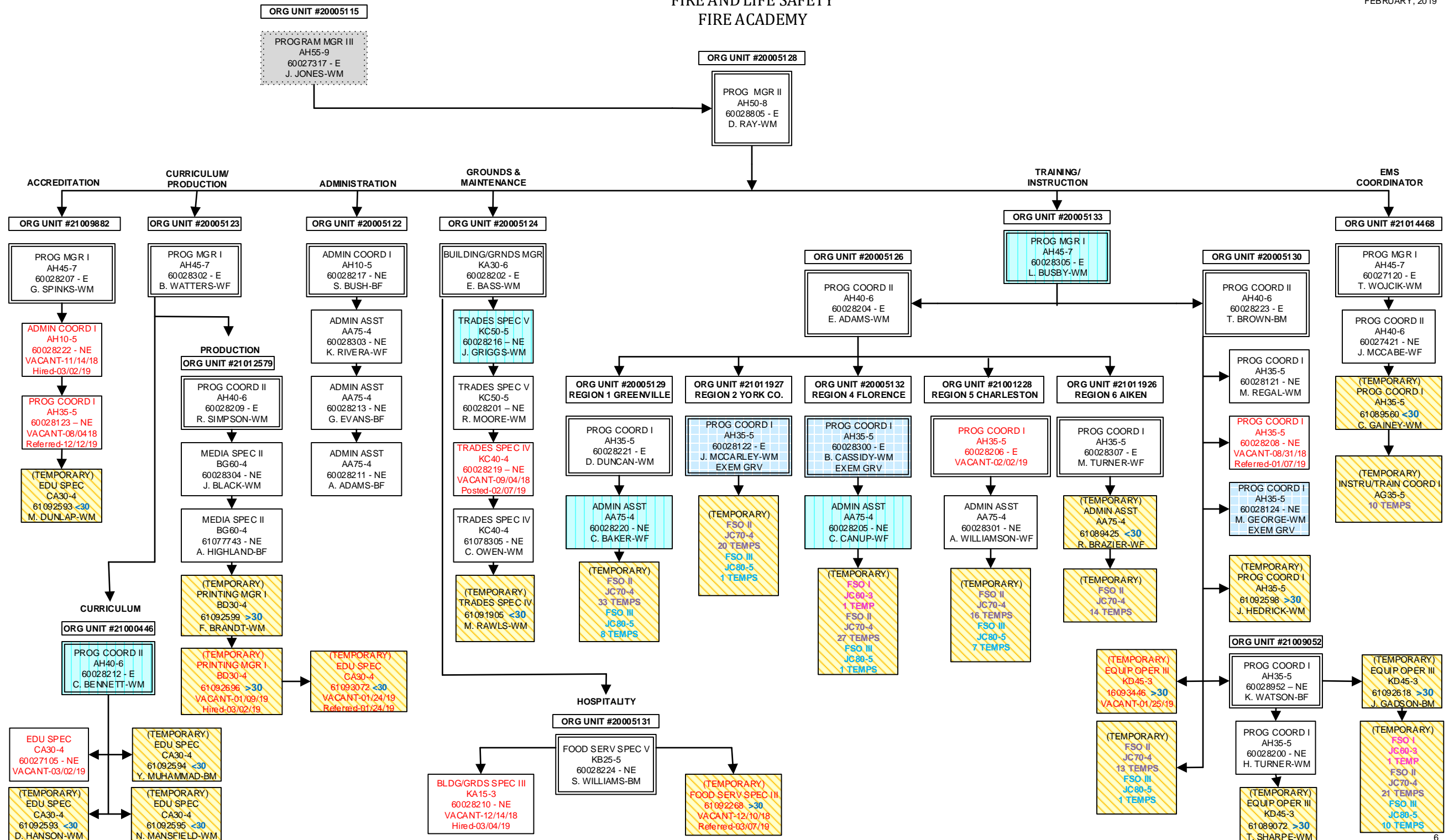


FIRE AND LIFE SAFETY
OFFICE OF STATE FIRE MARSHAL

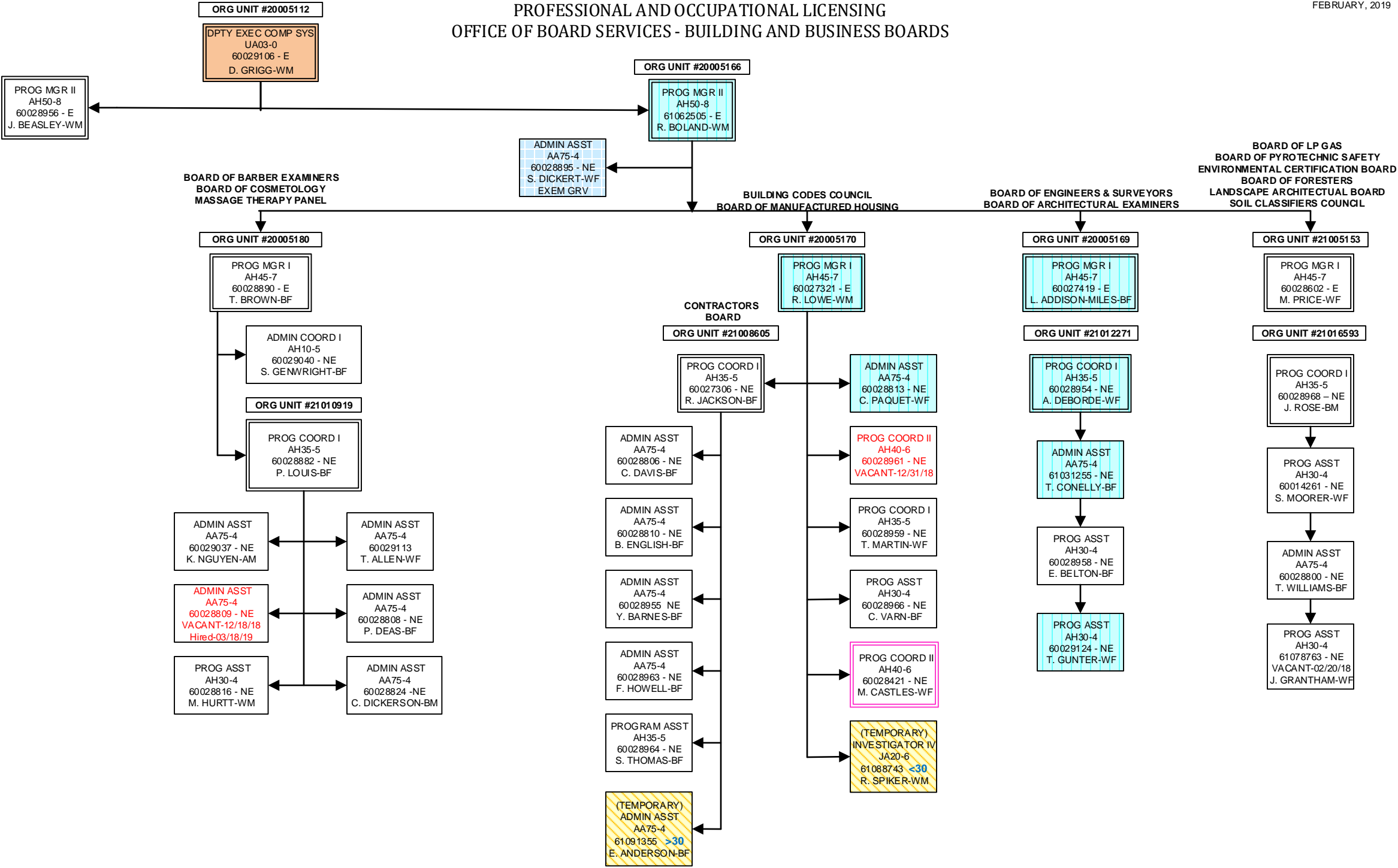
FEBRUARY, 2019



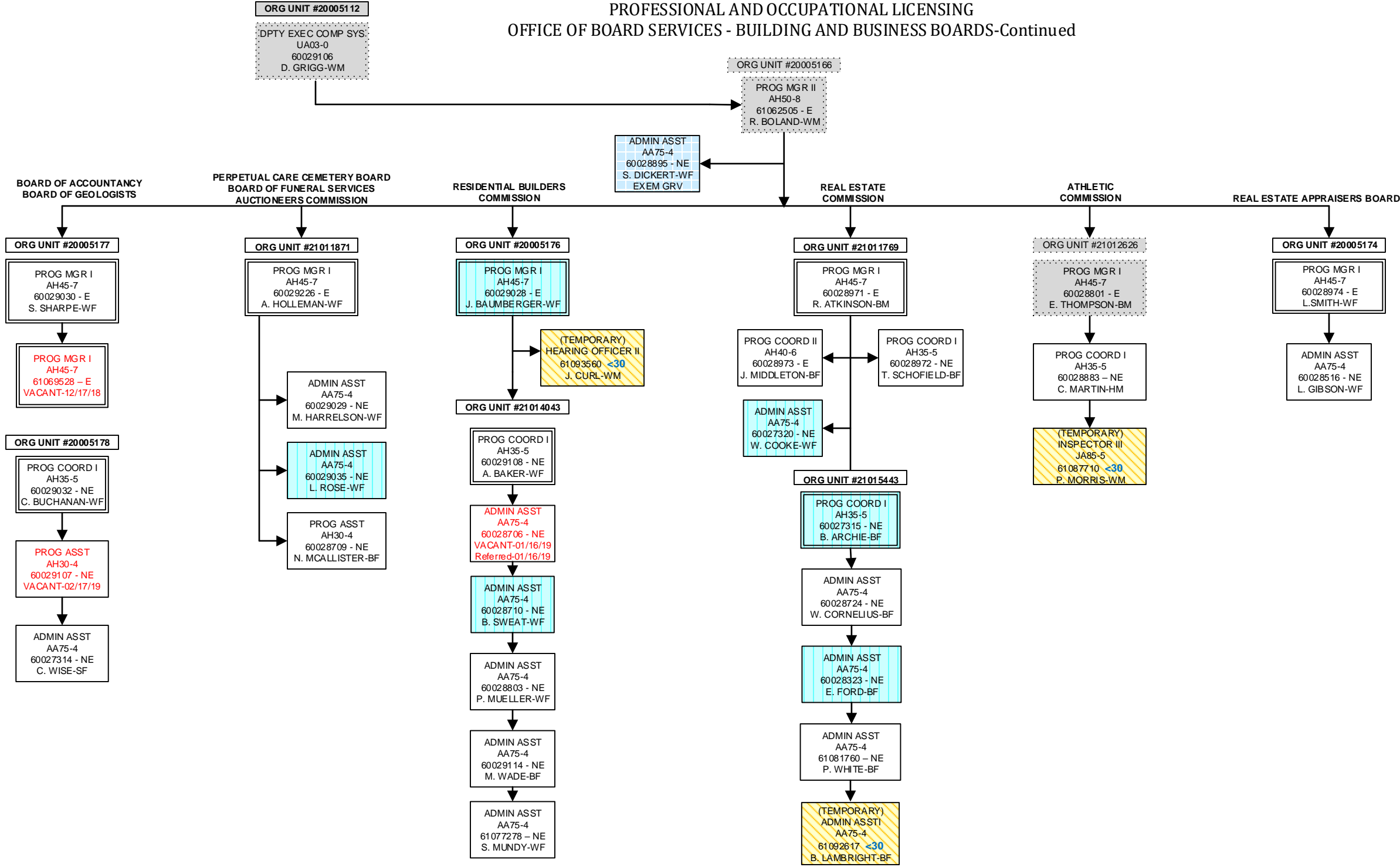
FEBRUARY, 2019



PROFESSIONAL AND OCCUPATIONAL LICENSING
OFFICE OF BOARD SERVICES - BUILDING AND BUSINESS BOARDS

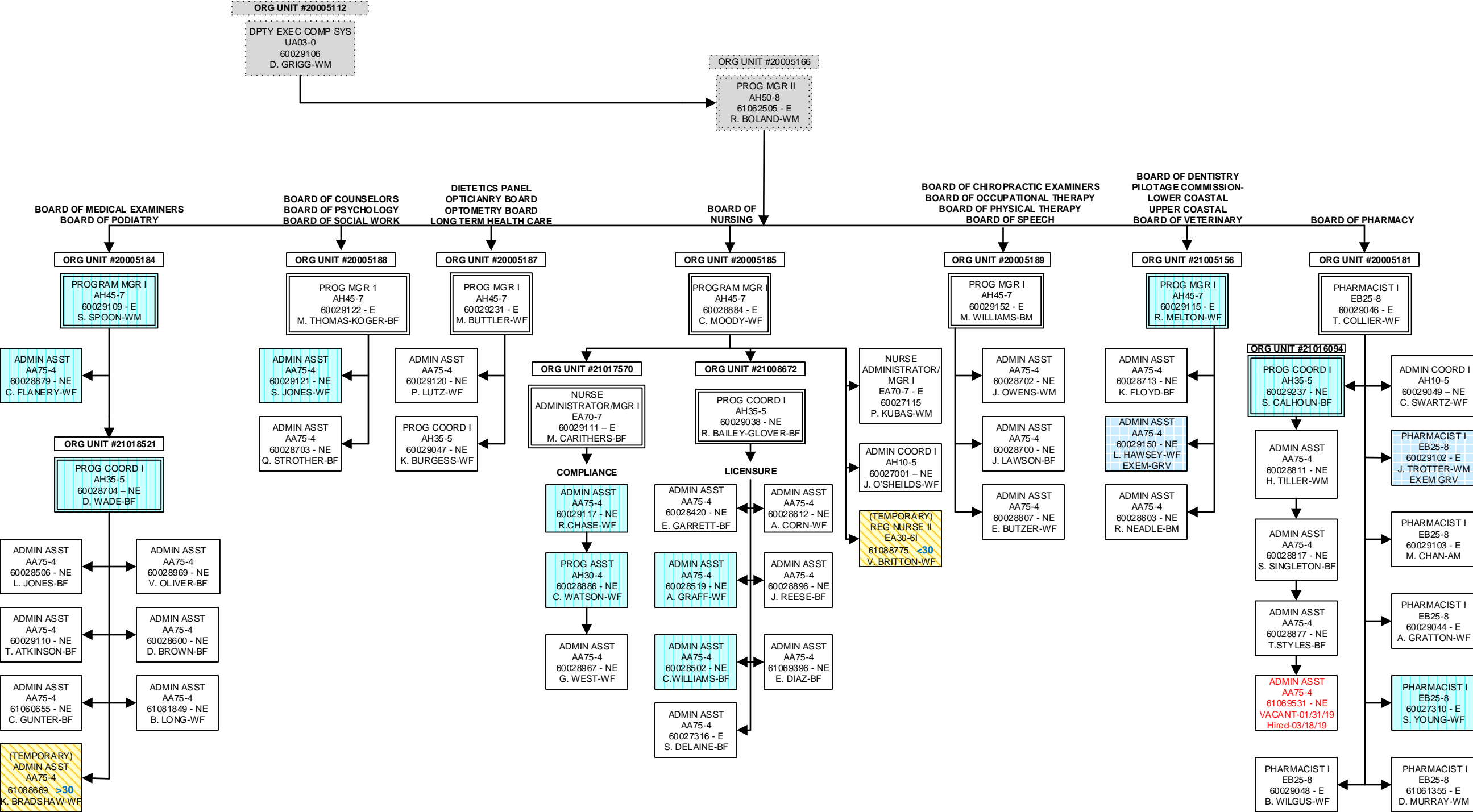


PROFESSIONAL AND OCCUPATIONAL LICENSING
OFFICE OF BOARD SERVICES - BUILDING AND BUSINESS BOARDS-Continued

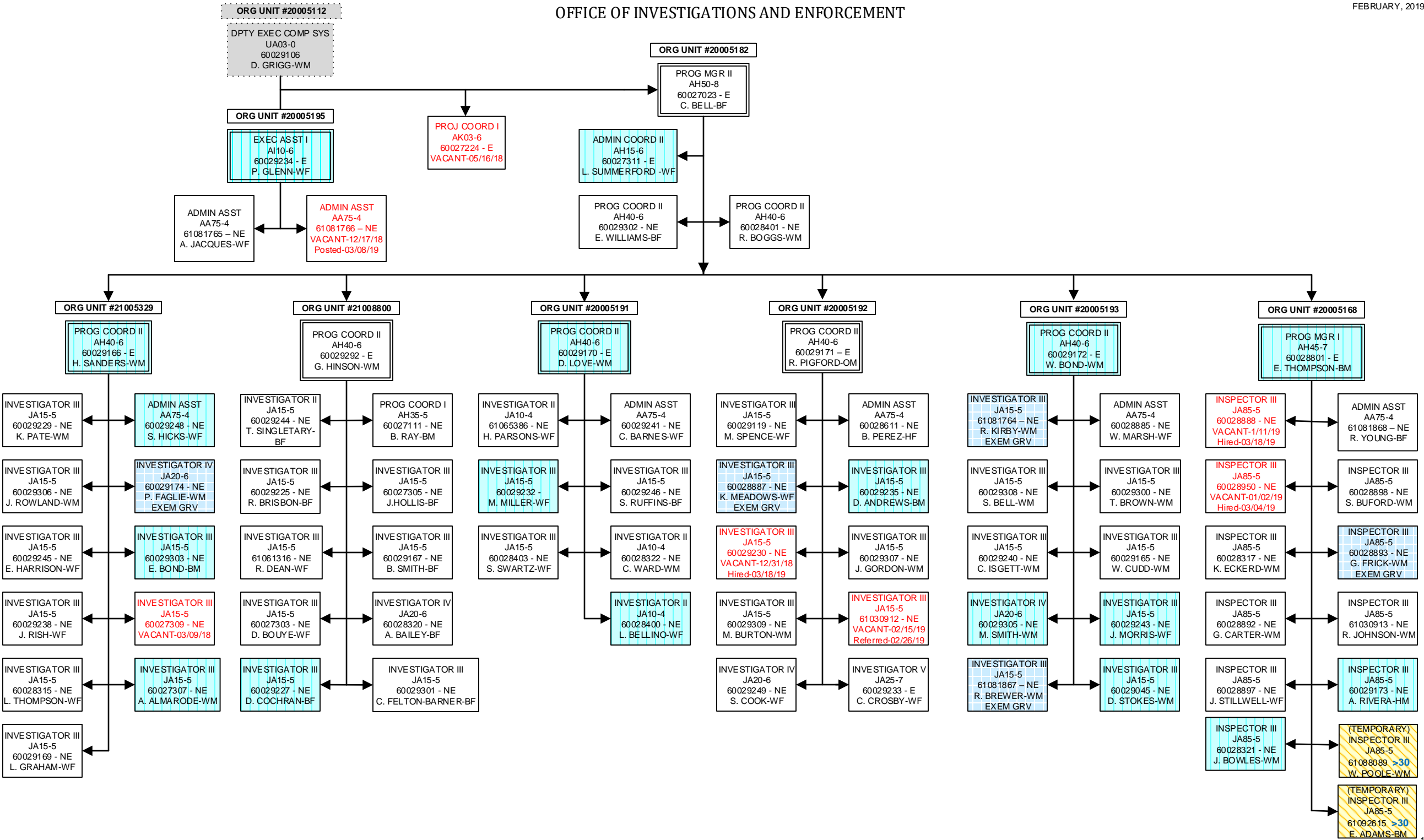


OFFICE OF BOARD SERVICES
HEALTH AND MEDICALLY RELATED BOARDS

FEBRUARY, 2019



OFFICE OF INVESTIGATIONS AND ENFORCEMENT



DIVISION OF LABOR
OSHA-COMPLIANCE

