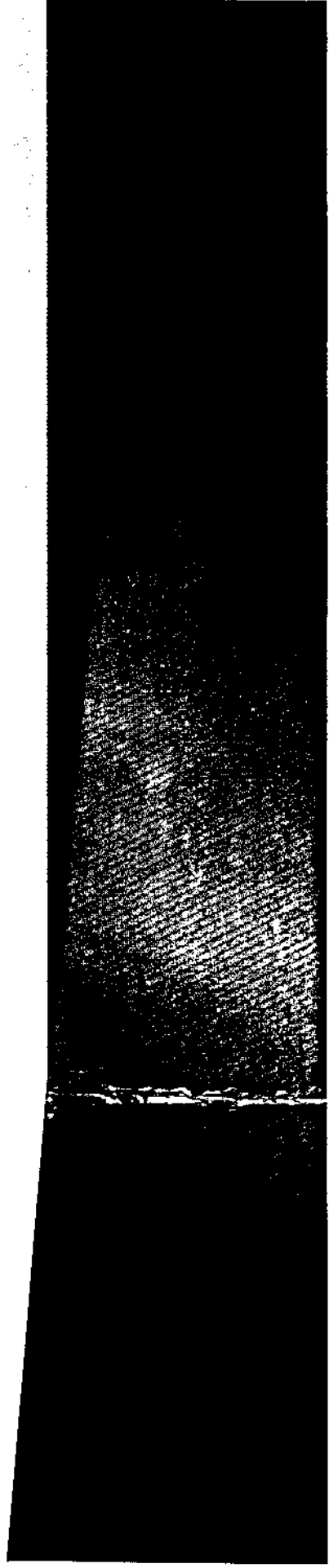


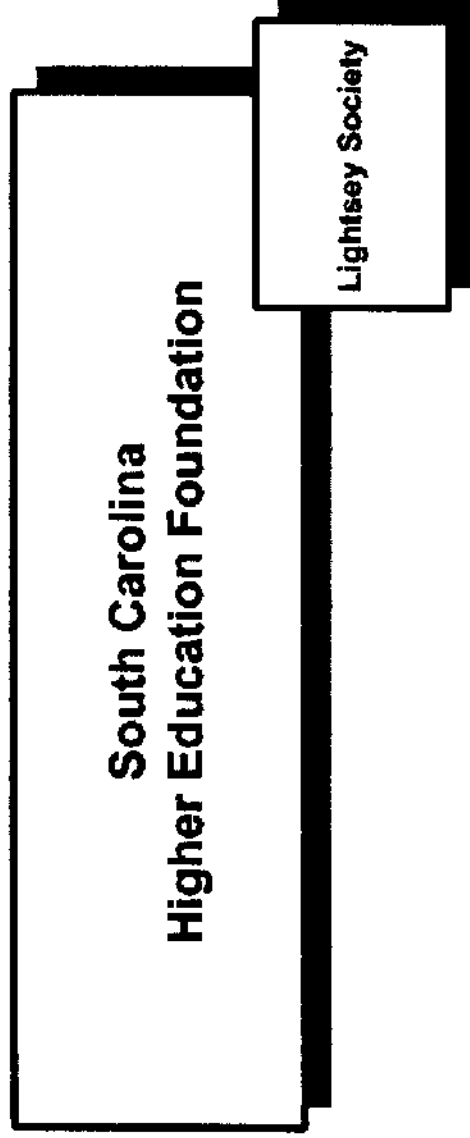
Att 11

HIGHER EDUCATION FOUNDATION

Update on Activities for the Commission on Higher Education



HEF Structure/ Operating Mission



Operating Mission

The South Carolina Higher Education Foundation fills a critical public need by addressing at the state level issues that are not easily solved by individual institutions and that are best dealt with through private, rather than governmental leadership.

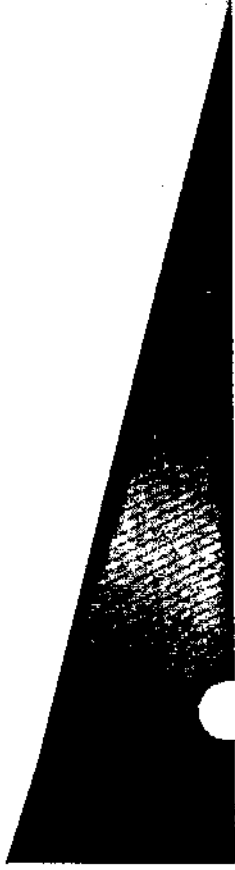
HEF Activities Summary– Current

- ▶ Linda Floyd Campus Safety Conference
- ▶ SC Teaching Excellence Summer Institute for faculty
- ▶ Trustees Conference
- ▶ Higher Education Hall of Fame



Planning

- ▶ Spent time over summer with CHE staff to develop recommendations for increased focus on core activities for the next few years



HEF Activities Summary--Possible

- Access to Higher Education: Home for South Carolina's College Access Network
- Public Awareness of the Importance of Higher Education to the State's Economy and Quality of Life
- Assisting Foundation Success
 - [Annual conference, web page, to assist college and university foundation in sharing best practices, information (e.g. tax)



**Recommended:
two key short-term focus areas**

- Knowledge Economy Awareness
- College Access Pipeline



College Access Pipeline

Creating a College Access Network

The last decade has seen a significant advance in activities to support college-going. Community groups have set up local organizations that provide critical services such as financial aid counseling, assistance with college applications, advocacy for college, and "last dollar" grants to fill the gap after available aid. Since these organizations typically have very small staffs with limited time for development, a number of states have organized state-level College Access Network (CAN) offices that provide support and assistance to the local organizations. Another important role of CANs is providing advice and help to communities trying to start local organizations.

Government has an important role in college access, but private leadership at both the local and state levels is an essential part of the change process. For that reason, a South Carolina CAN would be created and overseen by the state's Higher Education Foundation (HEF).

- Need for coordination / research / support
- Action 1: Create the SC College Access Network
 - Consultants to develop a grant plan
 - Seek external support from major foundation
- HEF as grant recipient



Knowledge Economy Awareness

- *South Carolina's citizens have an historically low understanding of the importance of higher education to the state's economy and quality of life. This is an especially difficult problem because in today's knowledge economy, sharply increased levels of postsecondary education have become an essential ingredient of survival, much less competitiveness.*
- Need for coordination / research / support
- Action 2: Build a comprehensive KEA strategy
 - Current group to provide problem definition / first stage grant proposal
 - First stage proposal
 - Seed \$ for polling
 - Second stage: seek external support from major foundation
 - HEF as grant recipient