

SOUTH CAROLINA  
DEPARTMENT OF LABOR, LICENSING AND REGULATION  
ORGANIZATIONAL CHART

NOVEMBER 2022

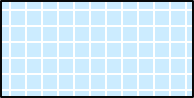
**SOUTH CAROLINA  
DEPARTMENT OF LABOR, LICENSING AND REGULATION  
ORGANIZATIONAL CHARTS**

Light Orange Square



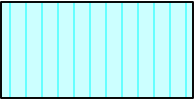
**Employee Exempt from Grievance**

Light Blue Square



**Employee returned after TERI  
or Retirement; Exempt Grv**

Turquoise Vertical Stripe



**Employee eligible to retire  
within 5 years by service  
or age**

White Solid Red Letters



**Vacant Position-Vacancy  
Date**

Yellow Diagonal Stripe



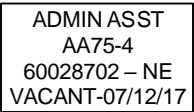
**Temporary Employee**

Dark Pink Outline



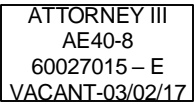
**Borrowed position**

NE Designation



**Non-exempt position**

E Designation



**Exempt position**

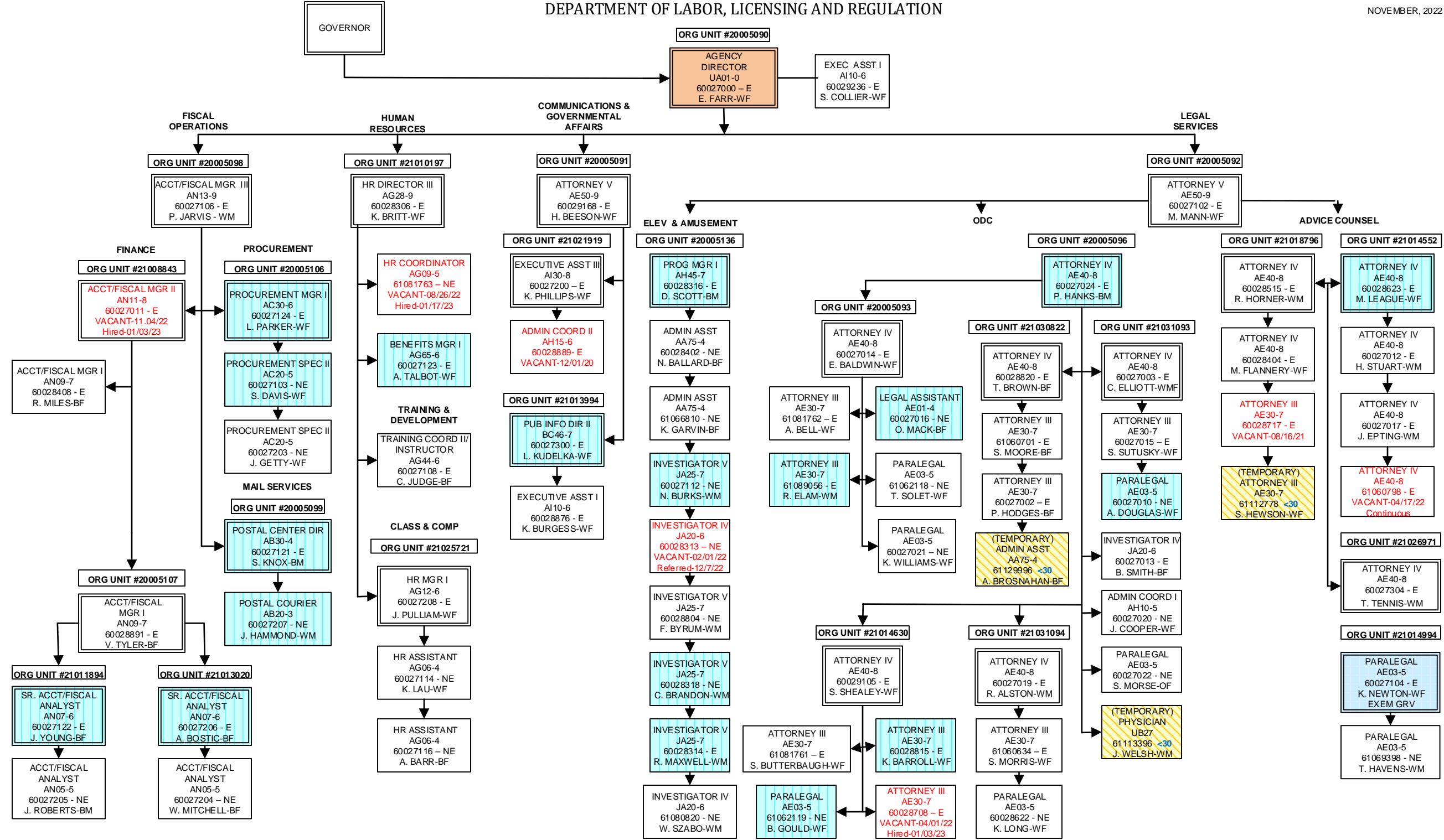
Purple Diagonal  
Stripe



**Two-Week Break**

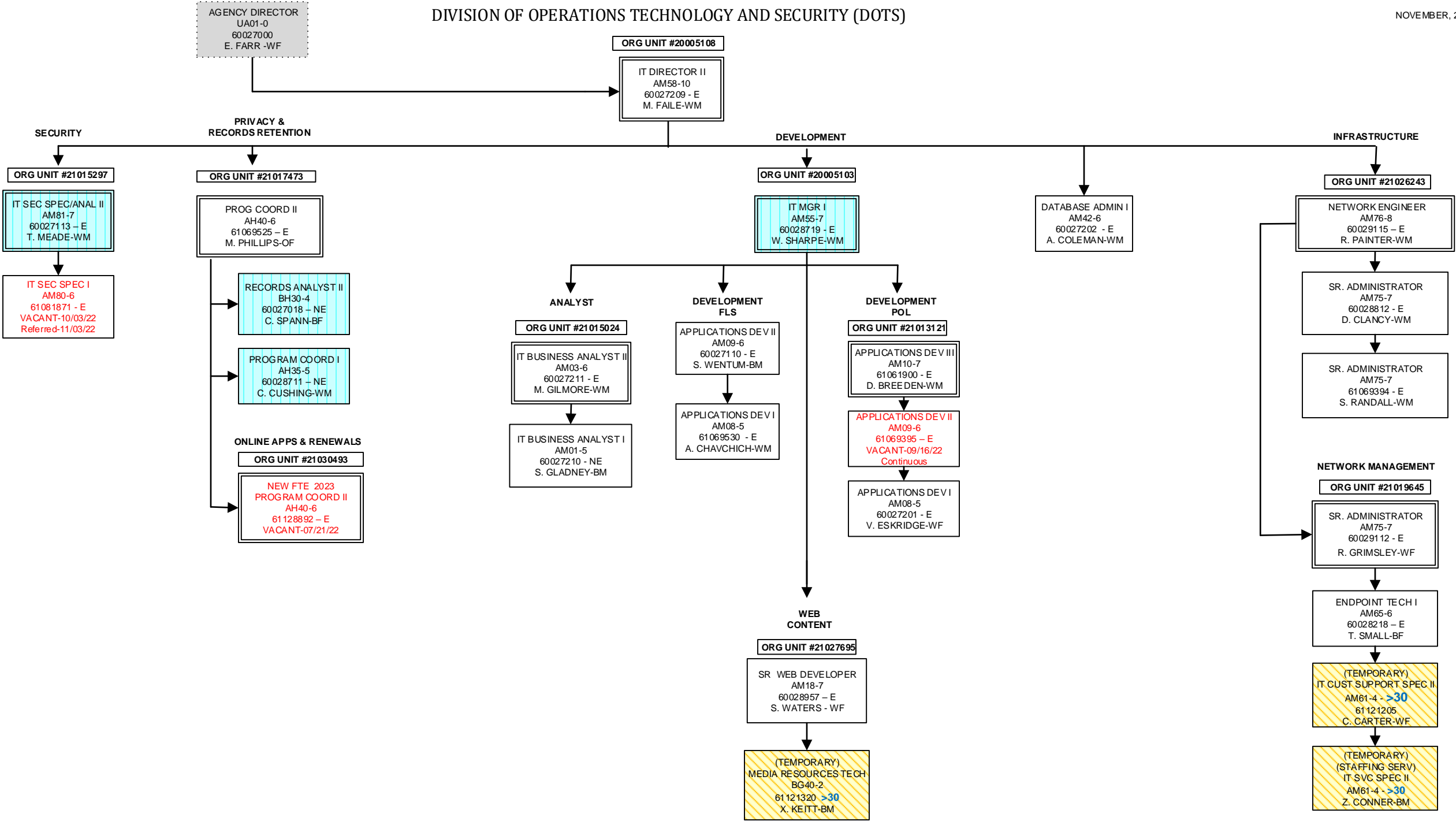
DEPARTMENT OF LABOR, LICENSING AND REGULATION

NOVEMBER, 2022



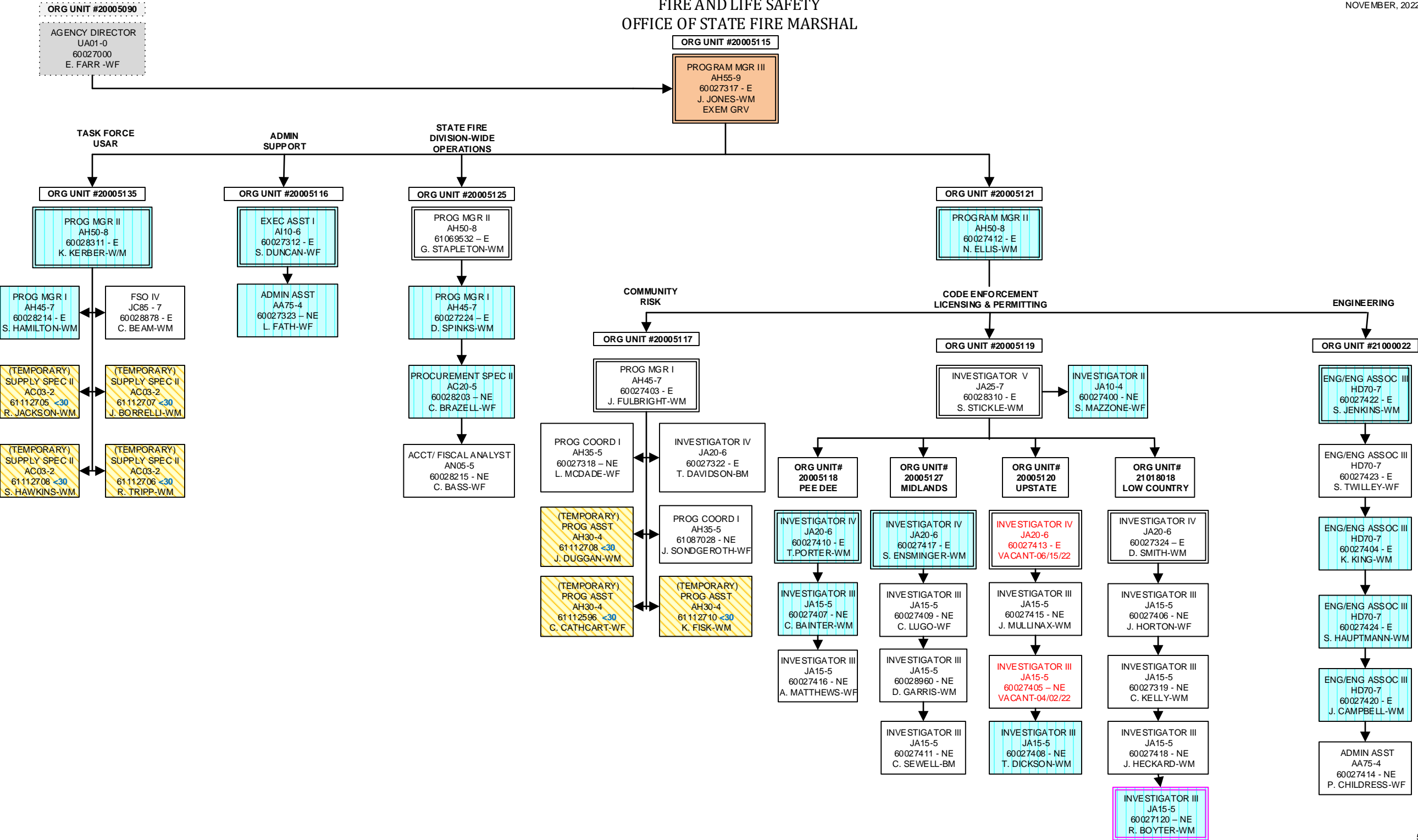
DIVISION OF OPERATIONS TECHNOLOGY AND SECURITY (DOTS)

NOVEMBER, 2022



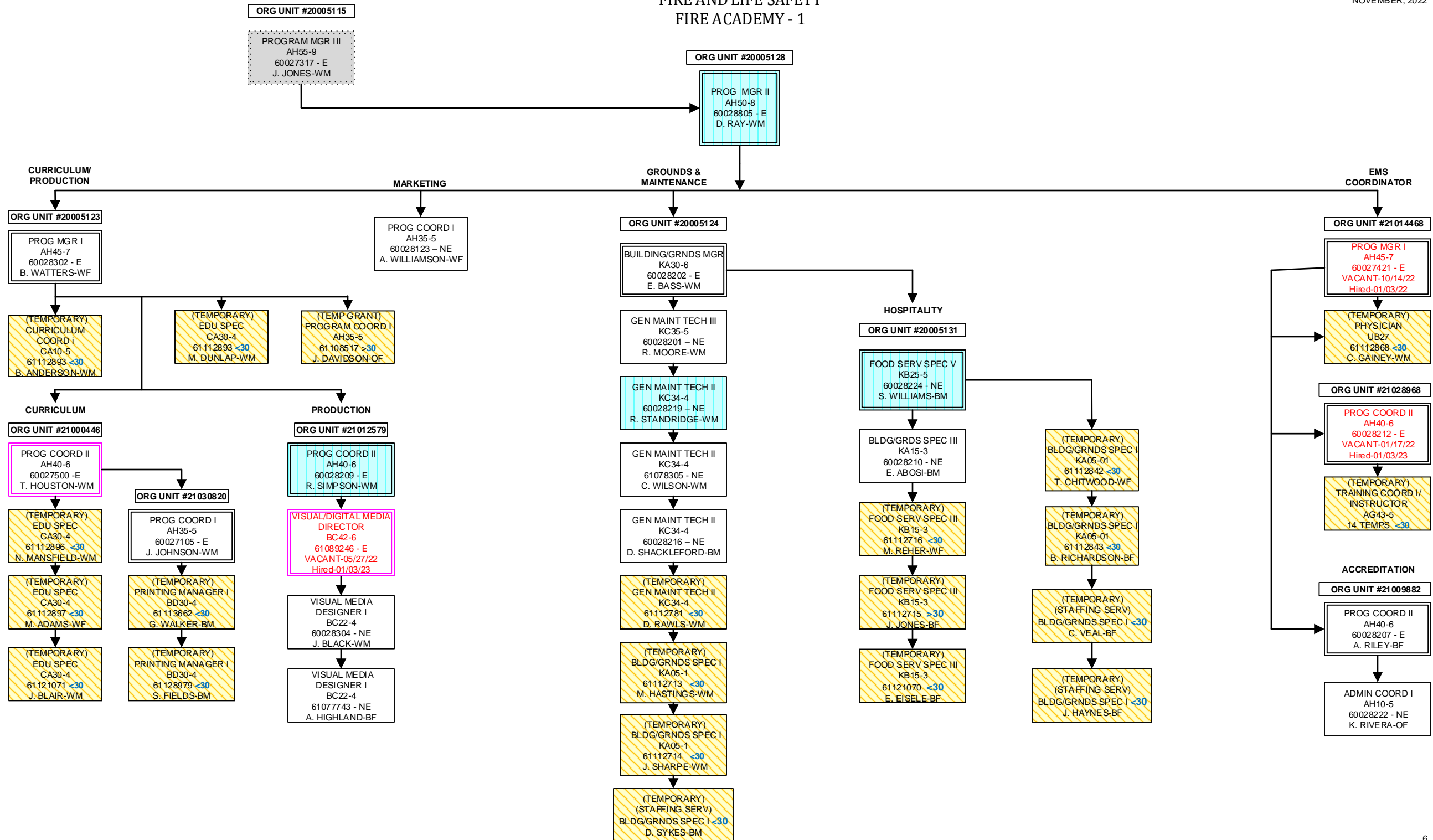
FIRE AND LIFE SAFETY  
OFFICE OF STATE FIRE MARSHAL

NOVEMBER, 2022

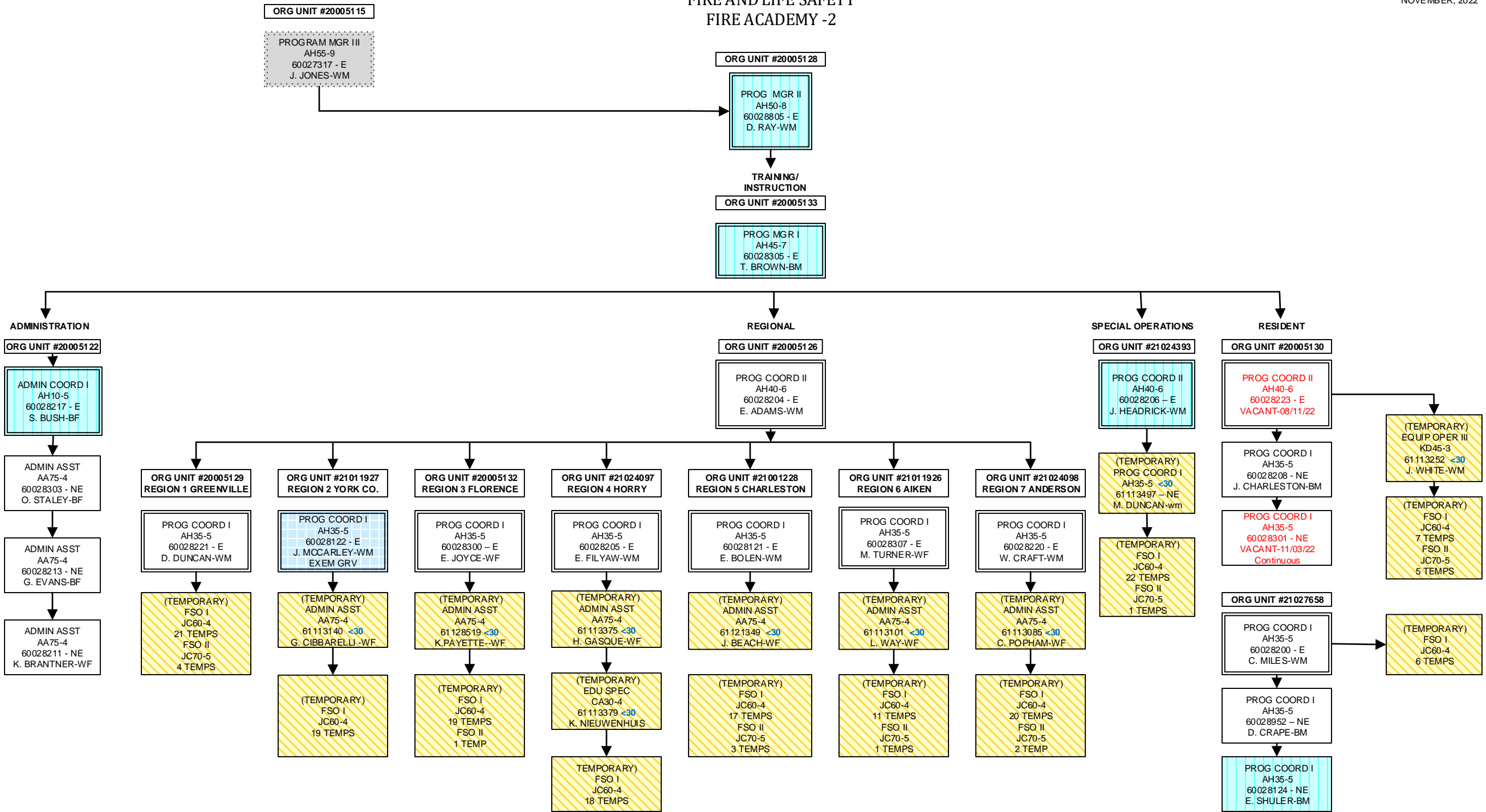


FIRE AND LIFE SAFETY  
FIRE ACADEMY - 1

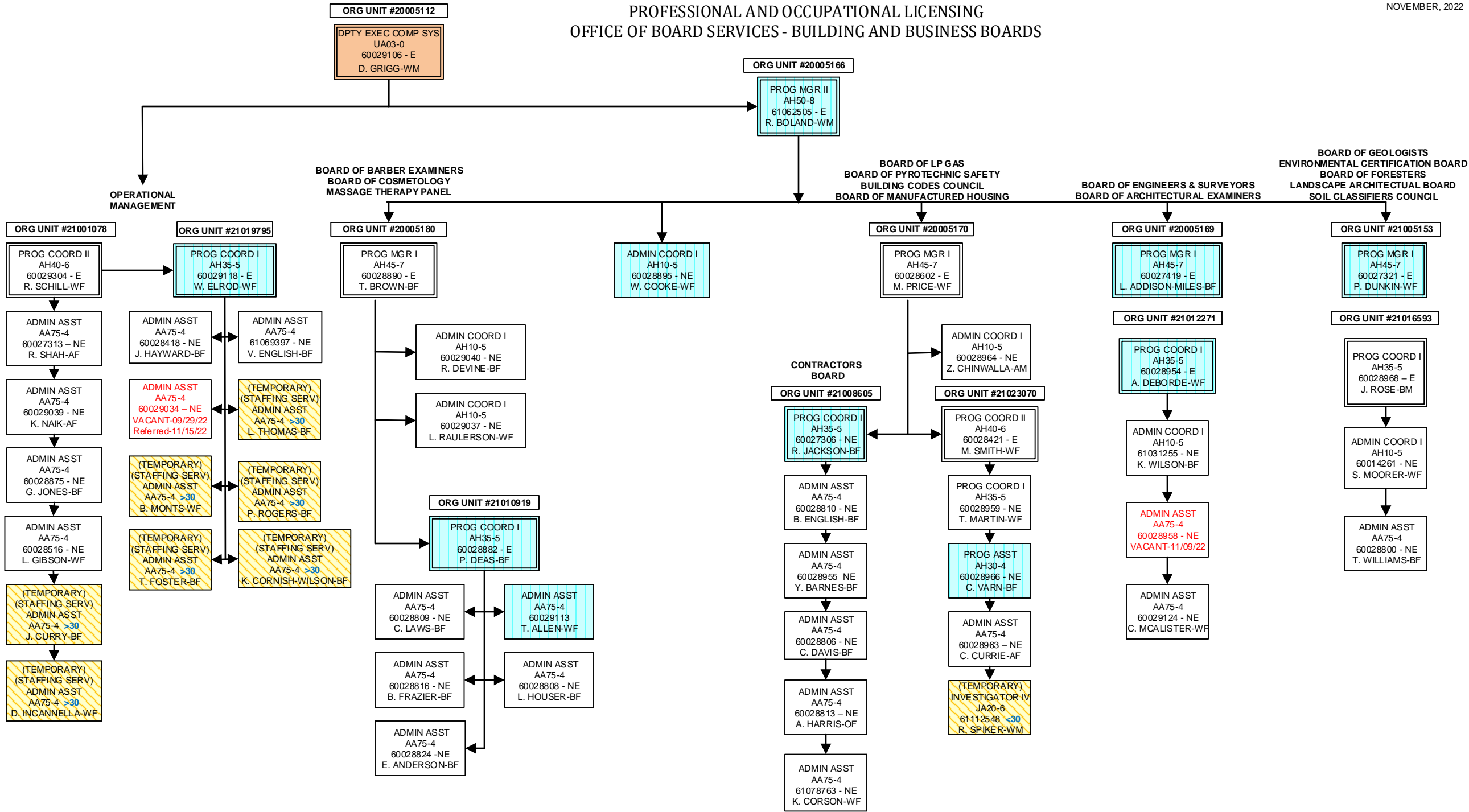
NOVEMBER, 2022



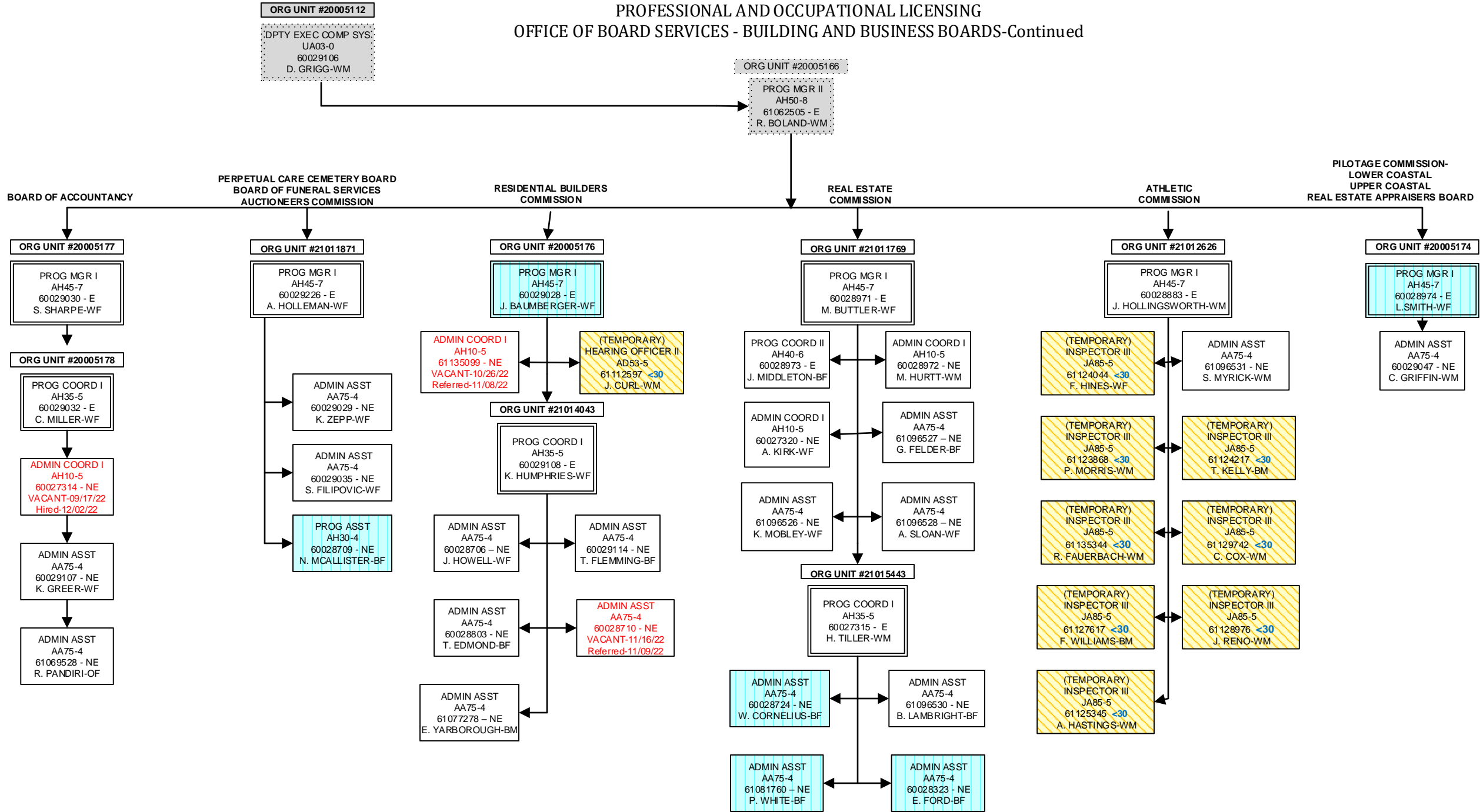
FIRE AND LIFE SAFETY  
FIRE ACADEMY -2



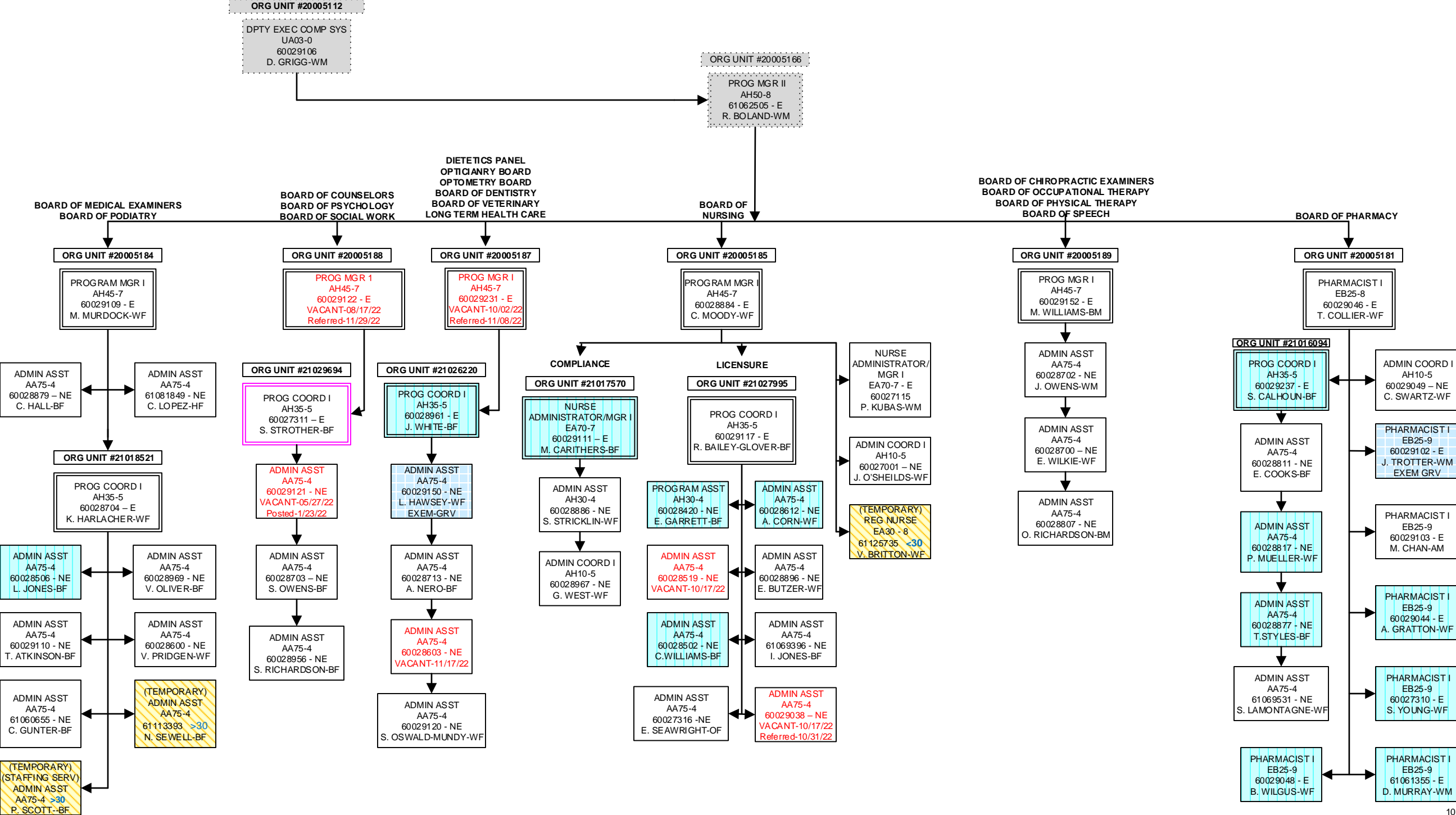
PROFESSIONAL AND OCCUPATIONAL LICENSING  
OFFICE OF BOARD SERVICES - BUILDING AND BUSINESS BOARDS



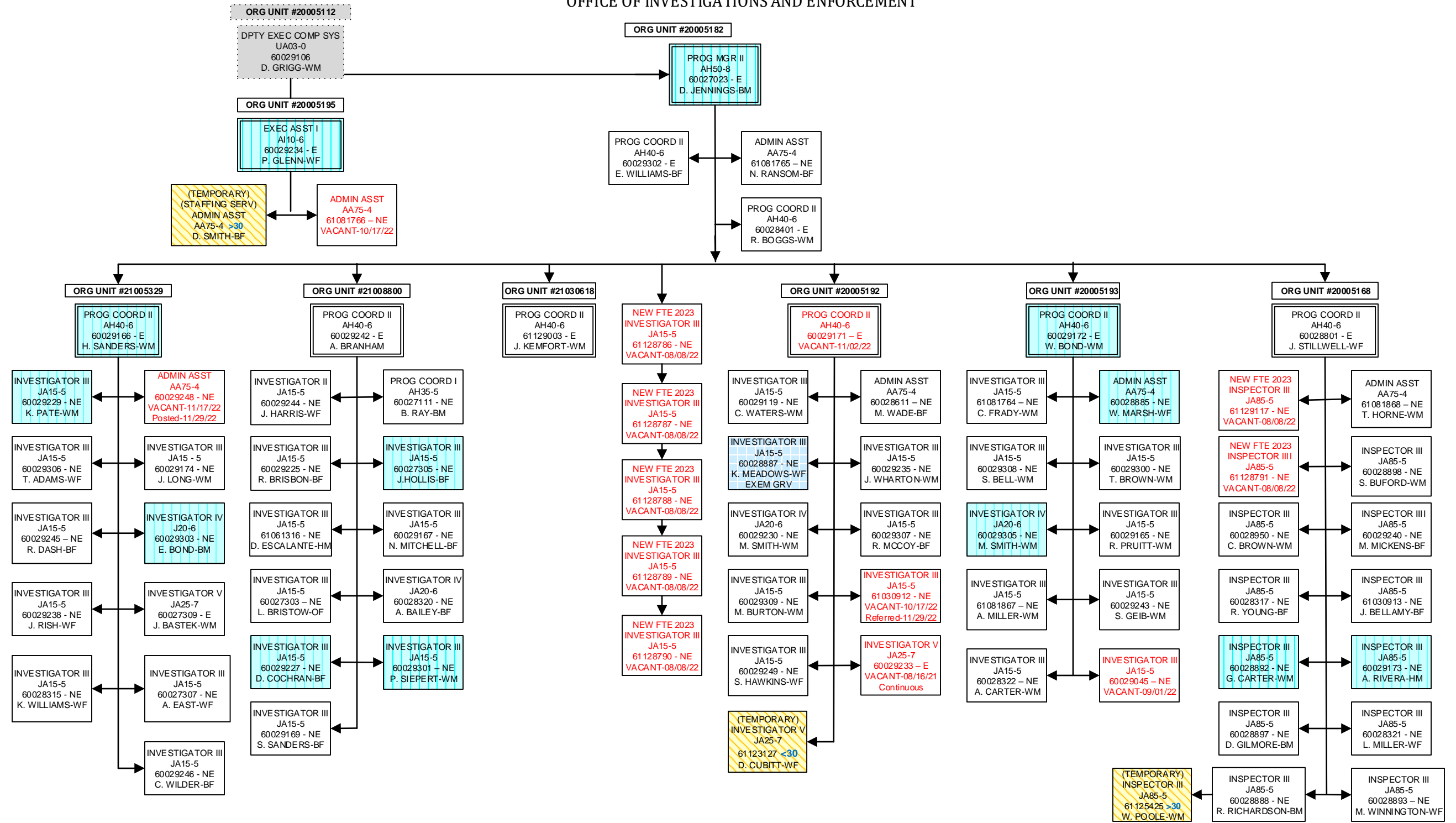
PROFESSIONAL AND OCCUPATIONAL LICENSING  
OFFICE OF BOARD SERVICES - BUILDING AND BUSINESS BOARDS-Continued



OFFICE OF BOARD SERVICES  
HEALTH AND MEDICALLY RELATED BOARDS



OFFICE OF INVESTIGATIONS AND ENFORCEMENT



DIVISION OF LABOR  
OSHA-COMPLIANCE

