

State of South Carolina, x
County of Richland. x

Personally appeared before me A. M. Deal, who being duly sworn deposes and says:

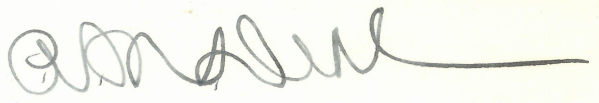
That he is the owner of a certain parcel of land situated on the corners of McDuffie Avenue, Marshall and House Streets, which he has owned since about the year 1923;

That subsequent thereto he executed three certain mortgages unto Genevieve E. Wright, each of which covered a portion of the property in question, which said mortgages are recorded in the Clerk's Office for Richland County in Mortgage Books EB, page 297, EL, page 181, and ET, page 131;

That about the year 1926 the said Genevieve E. Wright became the wife of deponent, and she is now known as Genevieve Wright Deal.

Sworn to before me this x
19th day of September, 1939. x

Evelyn Smith (L.S.) x
Evelyn Smith. (L.S.) x
Notary Public for S.C. x


A. M. Deal.

1-64
11/2/65
5/12/63

TERMS OF COURT 5TH CIRCUIT

RICHLAND COUNTY

KERSHAW COUNTY

GENERAL SESSIONS

GENERAL SESSIONS

2ND MONDAY IN JANUARY
3RD MONDAY IN APRIL
1ST MONDAY IN JUNE
1ST TUESDAY IN SEPTEMBER

2ND MONDAY IN FEBRUARY
1ST MONDAY IN JULY
4TH MONDAY IN OCTOBER
2ND MONDAY IN DECEMBER

COMMON PLEAS

COMMON PLEAS

3RD MONDAY IN FEBRUARY
1ST MONDAY IN APRIL
2ND MONDAY IN MAY
4TH MONDAY IN SEPTEMBER
3RD MONDAY IN NOVEMBER

2ND MONDAY IN MARCH
3RD MONDAY IN JUNE
1ST MONDAY IN NOVEMBER

C. E. HINNANT

CLERK CIRCUIT COURT

AGNES W. HEINITSH

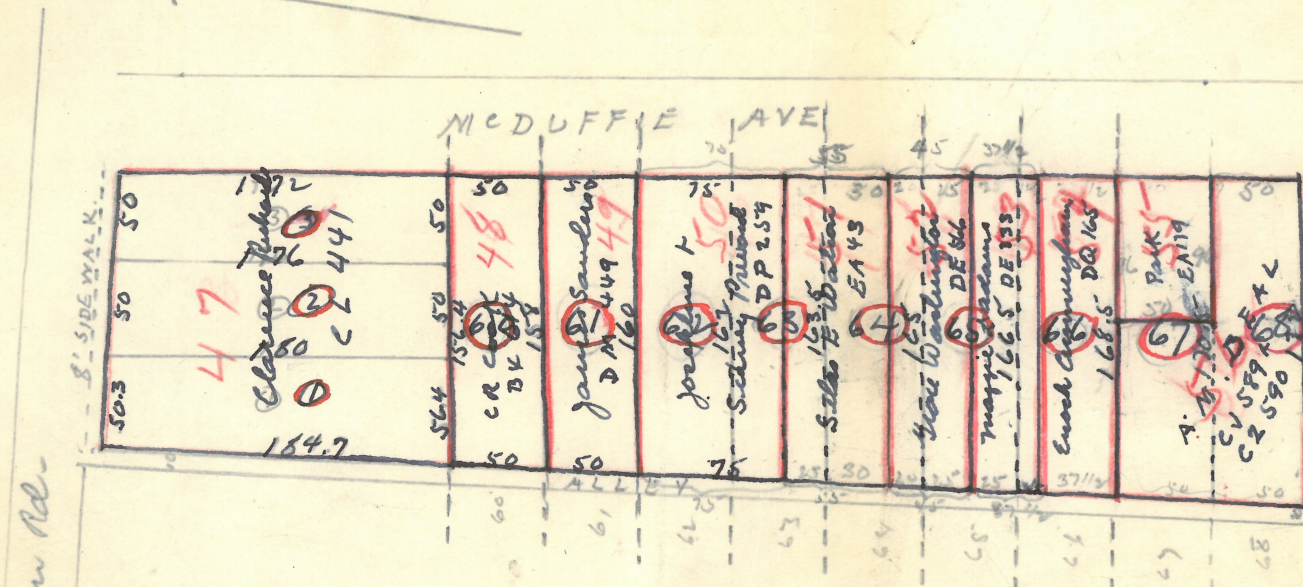
DEPUTY CLERK

HON. G. DUNCAN BELLINGER
PRESIDING JUDGE 5TH CIRCUIT

HON. A. W. HOLMAN
JUDGE COUNTY COURT

HON. A. F. SPIGNER
SOLICITOR 5TH CIRCUIT

COLUMBIA, S. C.



Hampton Place

Property col. R.E. & Son Agency
J. Keith Lyare

Plat Book C pg 35

See Plat on R. E. & Son