



Cultural Resources Project Screening Form

File Number: PIN: Route: County:

Project Name:

Type 1: Resurfacing, installation of fencing, signs, pavement markings, traffic signals, passenger shelters, railroad warning devices, installation of rumble strips, and landscaping

Project Type

Type 2: Bridge replacements on alignment, construction of bicycle/pedestrian facilities, and intersection improvements

Type 3: Projects that do not fall into Type 1 and Type 2 categories (e.g. road widening)

Comments

This project will replace the bridge that carries S-272 over Second Creek. The archaeological APE was set as a 100 ft wide corridor straddling the roadway for a distance of 700 feet to the north and 700 ft to the south of the bridge, widening to 200 ft at the bridge. The architectural APE was set as a 300 ft buffer around the archaeological APE. Background review indicated two previously recorded historic resources (Asset No. 3058 – the current S-272 bridge - and Site No. 1259, a ca 1850 house) are located in the study area. Both resources have been previously determined not NRHP eligible. A cultural resources field survey was conducted on Jan. 17, 2019. The survey consisted of a pedestrian reconnaissance of the study area augmented by the excavation of shovel test pits (STPs) at 30 meter intervals in the archaeological APE. A total of 12 STPs were excavated. Sixteen potential STP locations were examined but not excavated due to disturbed ground surface, slope, or the presence of hydric soils. All STPs were negative and no artifacts or historic features were noted on the surface. Three new historic resources were recorded (Site Nos 1981, 1981.001, and 1982). All were assessed as not NRHP eligible. No further investigations are recommended.

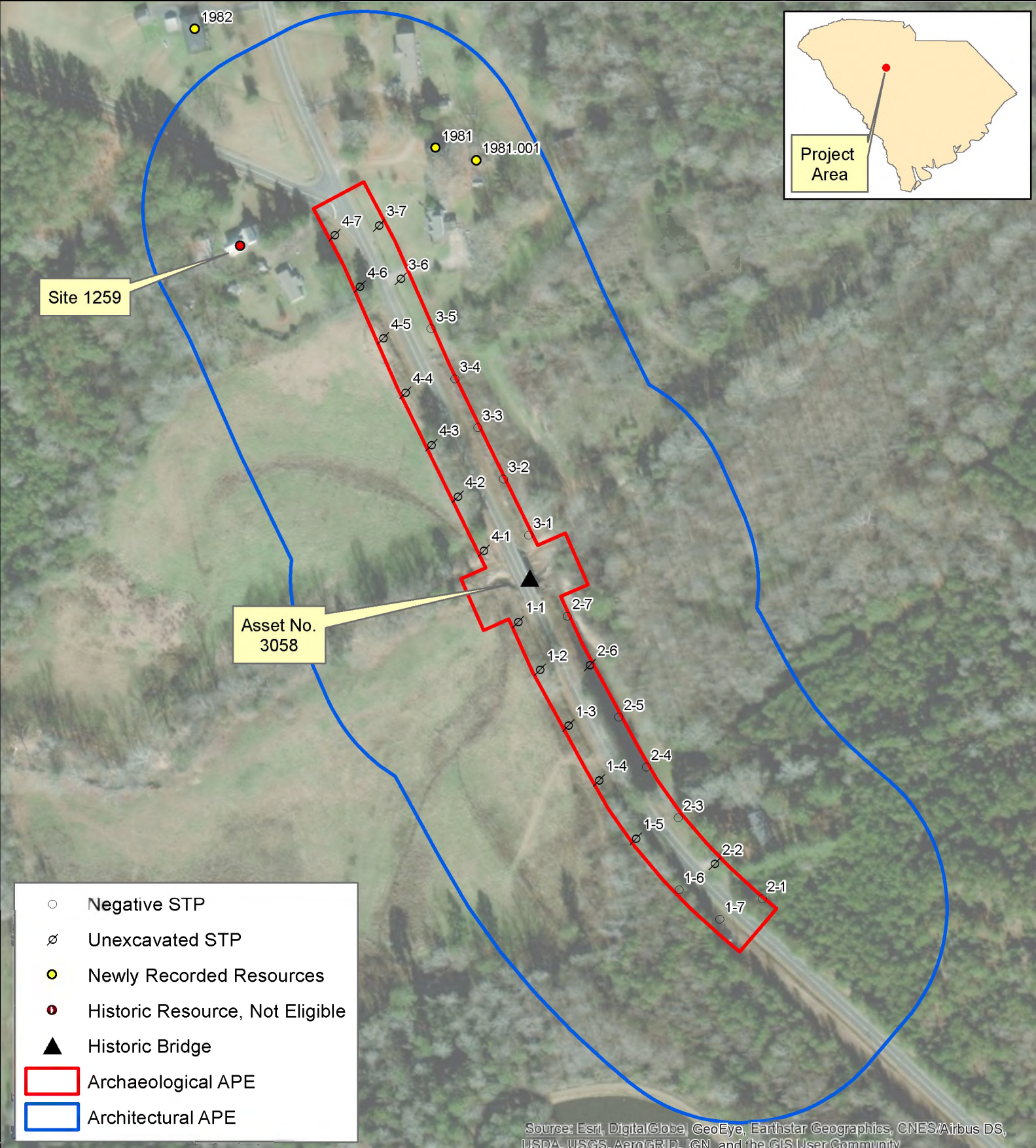
Effect Determination:

*SHPO consultation is required for all Type 3 projects and any project with a No Adverse or Adverse Effect Determination.

This screening form was developed to satisfy documentation requirements for Type I and Type II projects under a Programmatic Agreement between the Federal Highway Administration, the South Carolina State Historic Preservation Office, the US Army Corps of Engineers, and the South Carolina Department of Transportation. For Type I and Type II projects that have no effect on historic properties, the completion of this screening form with supporting documentation (e.g. ArchSite Map) provides evidence of FHWA and SCDOT's compliance with Section 106 of the National Historic Preservation Act.

Prepared by:

Review Date:



Date:
January 30, 2019



Newberry County
Load Restricted Bridges

**S-272 (Graham Road) over
Second Creek**

Project ID: P038065

