

PRIMARY WIRING DIAGRAM

NOTE: ALL PRIMARY WIRING SHALL BE FOR 220-110 VOLT, 1-PHASE, 60 CYCLE. VOLTAGE CAN BE INCREASED IN FUTURE TO 4800 VOLTS.

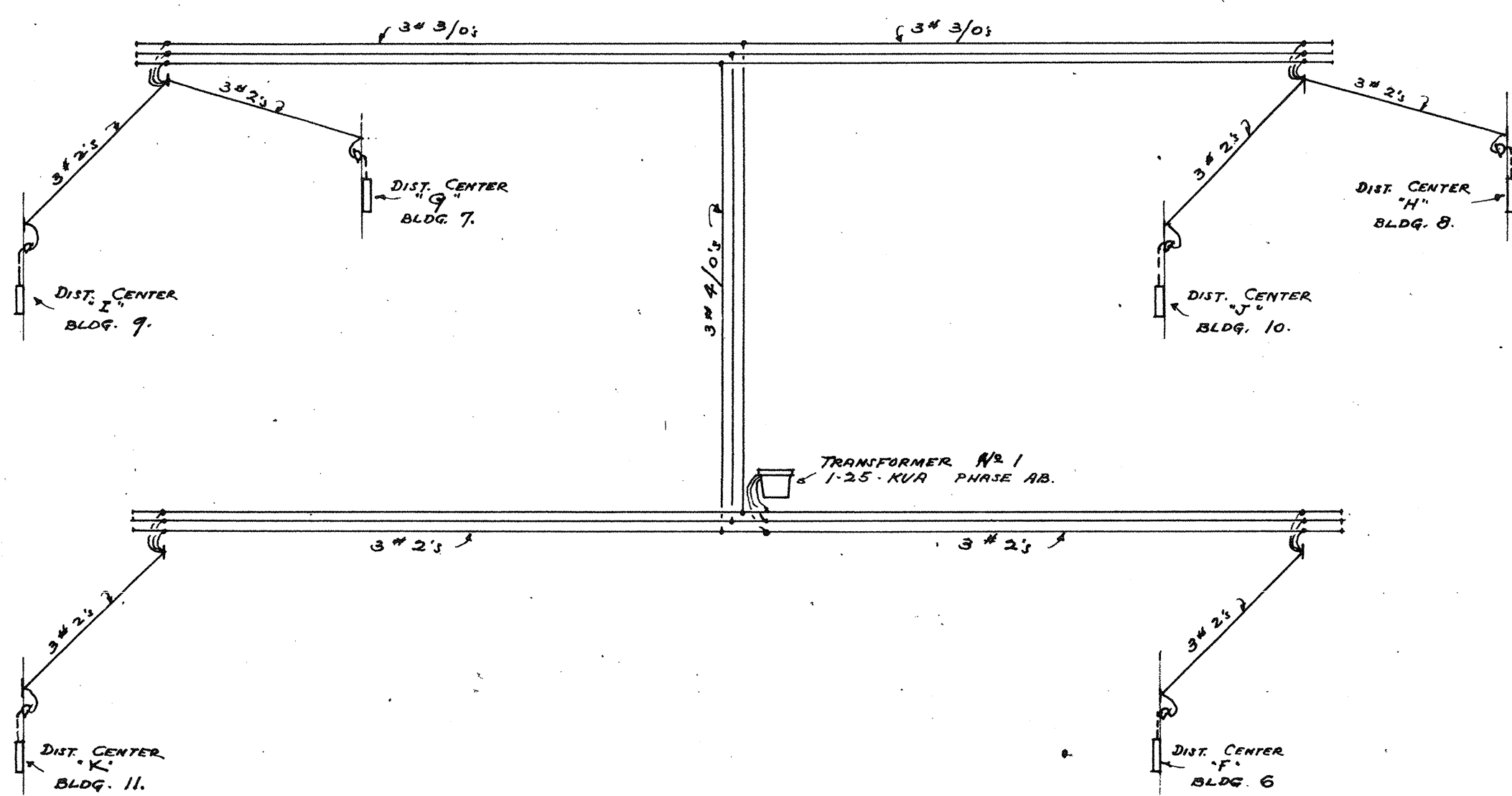


DIAGRAM OF DISTRIBUTION FROM TRANSFORMER NO. 1

220-110 VOLTS, 1-PHASE, 60 CYCLE

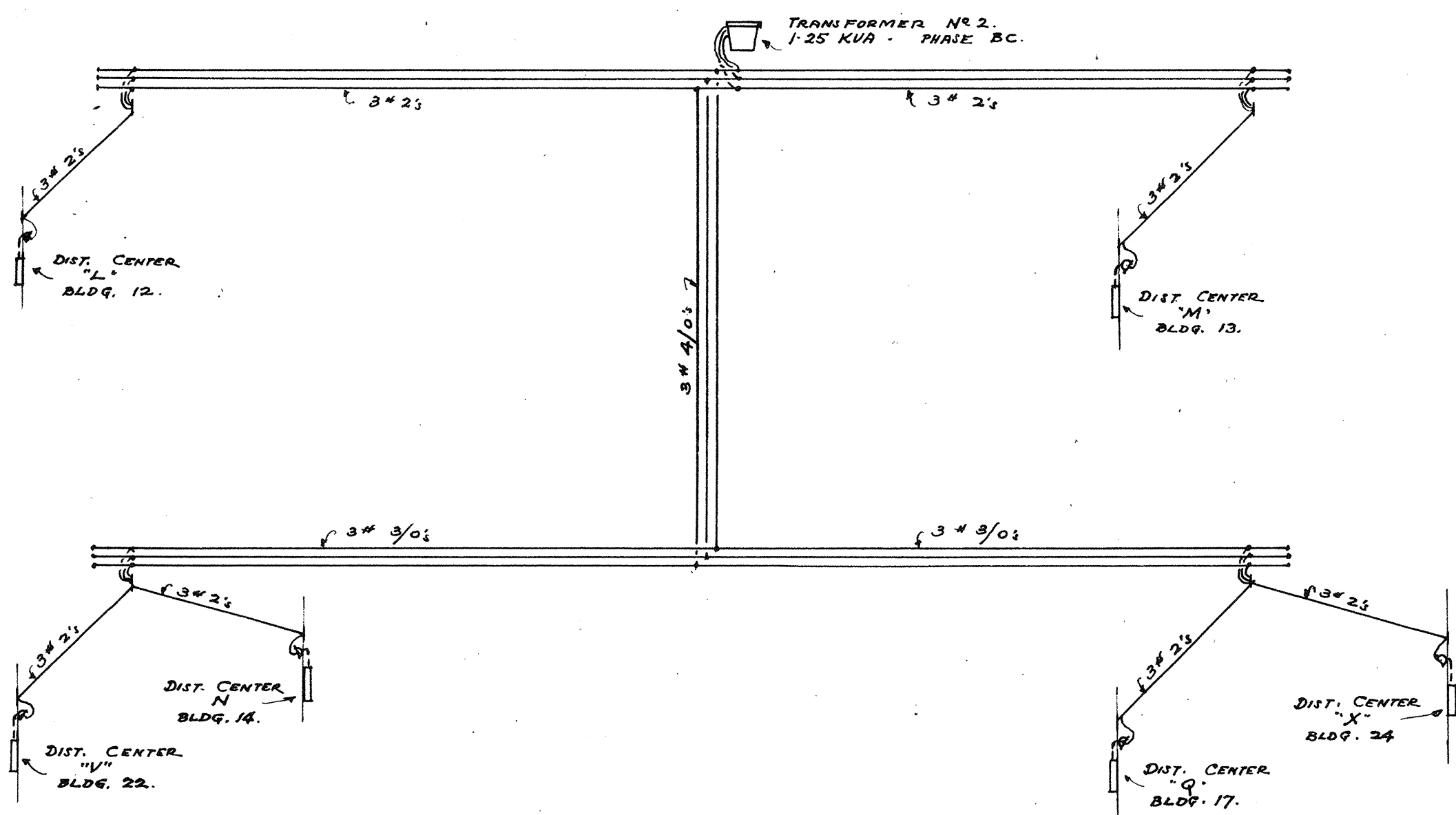
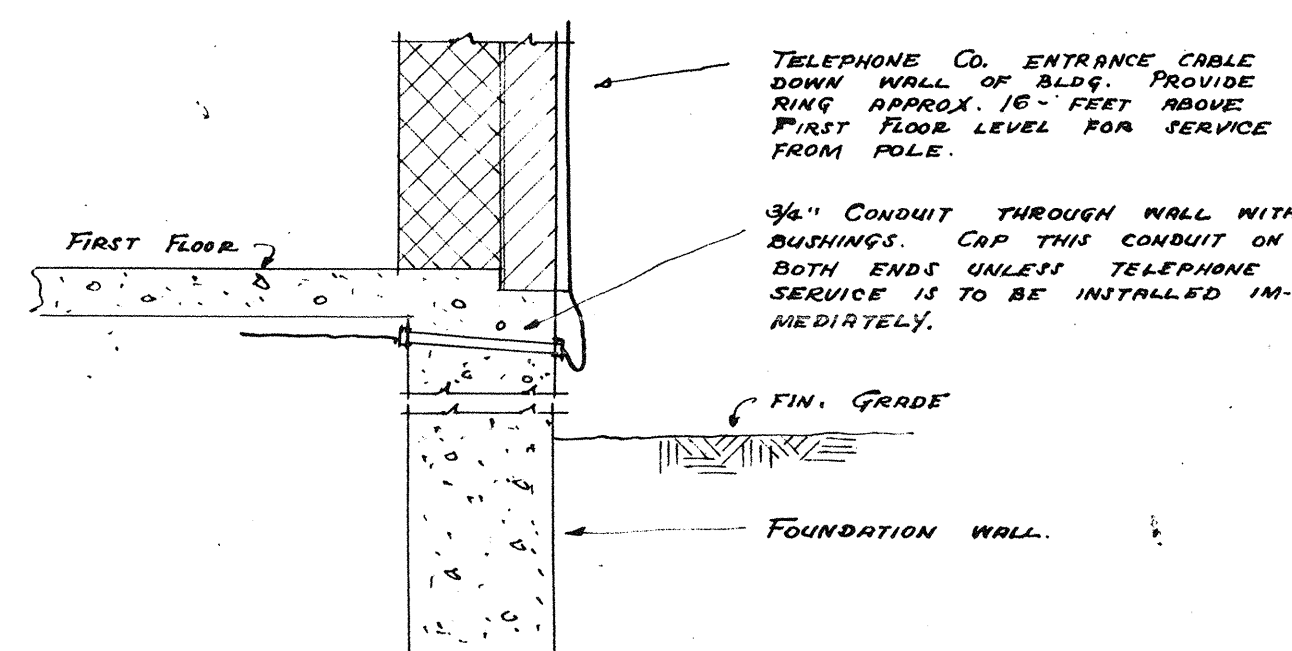


DIAGRAM OF DISTRIBUTION FROM TRANSFORMER NO. 2

220-110 VOLTS, 1-PHASE, 60 CYCLE



3/4" SCALE DETAIL OF TYPICAL TELEPHONE SERVICE CONNECTION TO BUILDING

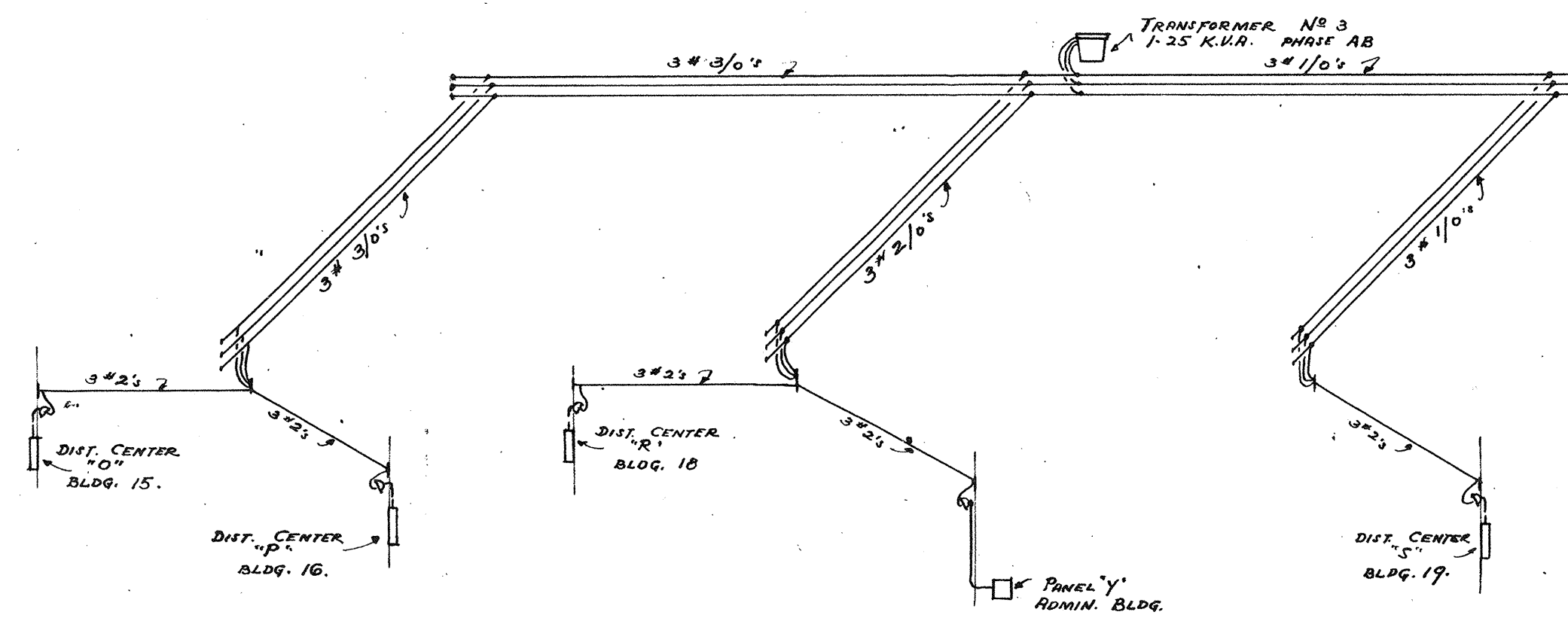


DIAGRAM OF DISTRIBUTION FROM TRANSFORMER NO. 3

220-110 VOLTS, 1-PHASE, 60 CYCLE

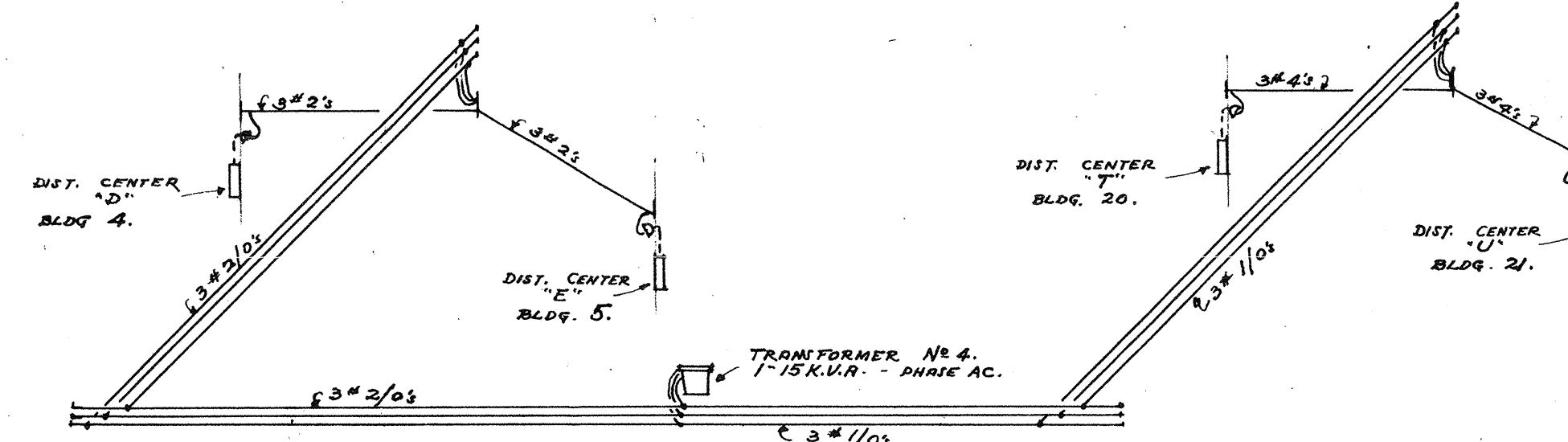


DIAGRAM OF DISTRIBUTION FROM TRANSFORMER NO. 4

220-110 VOLTS, 1-PHASE, 60 CYCLE

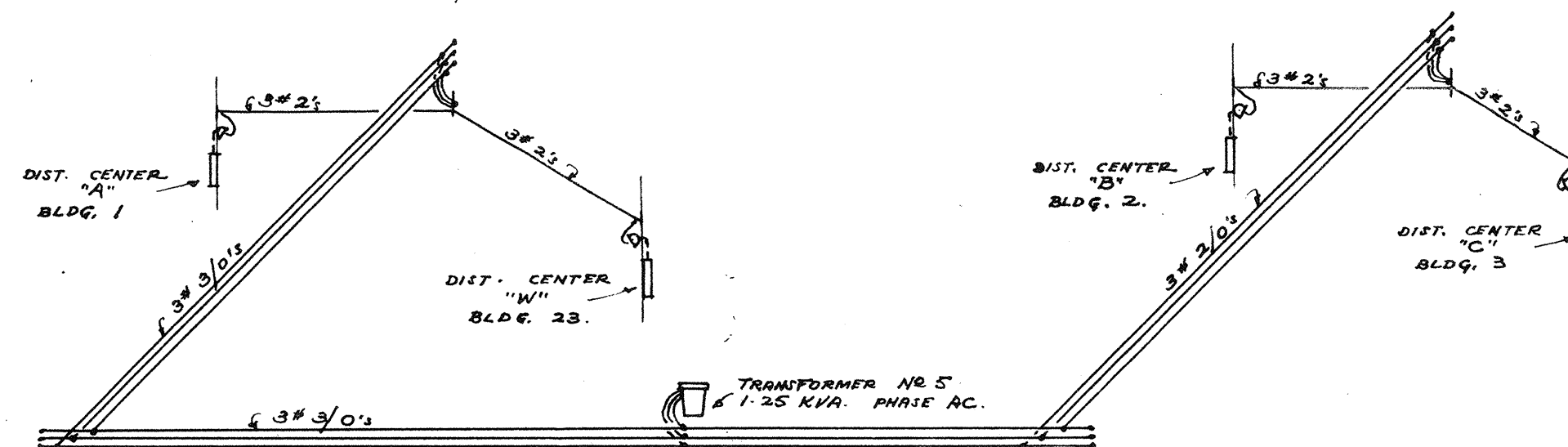
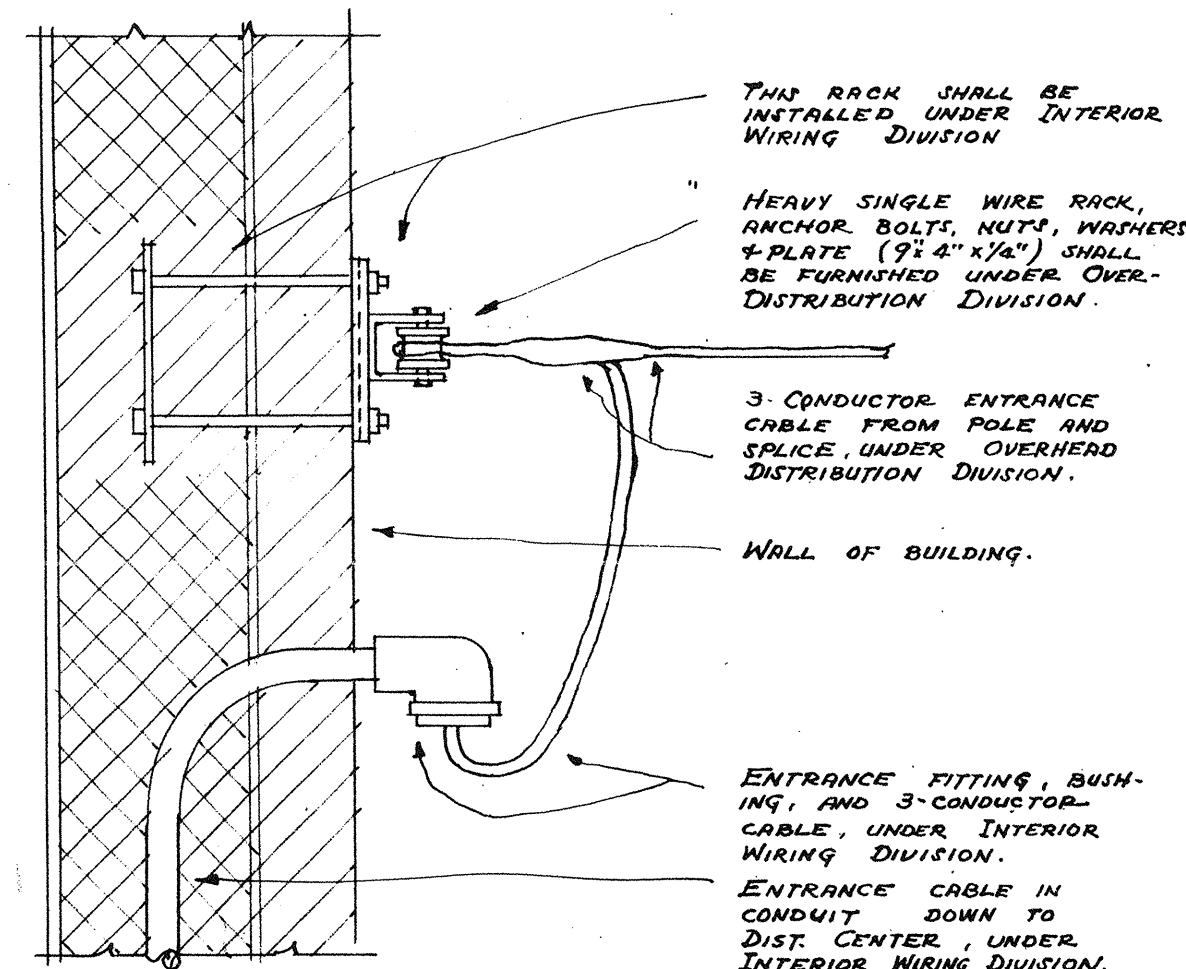
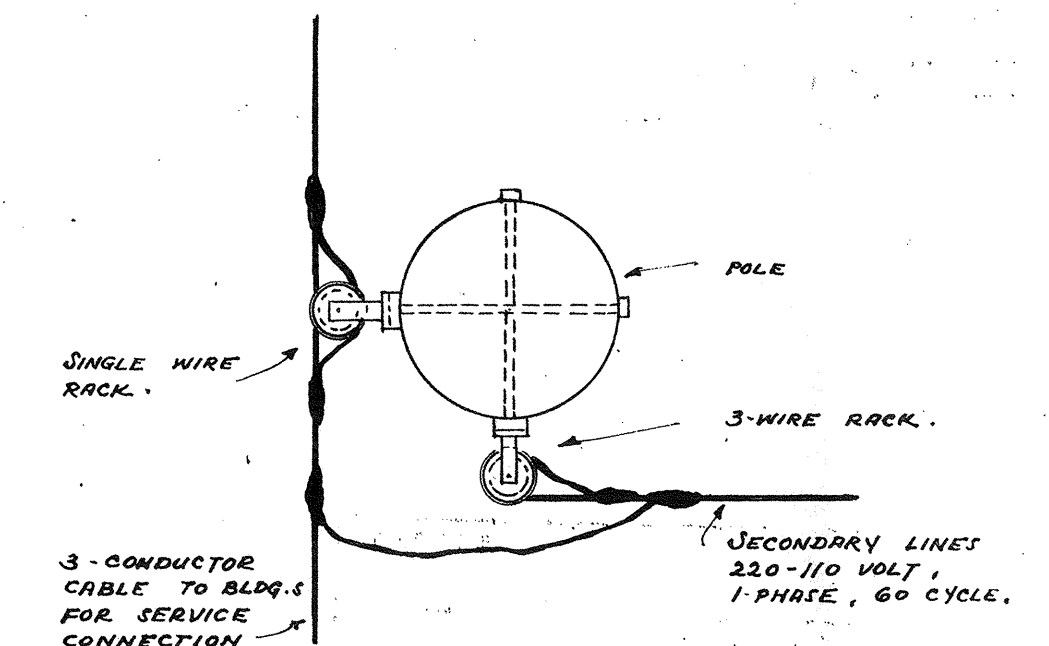


DIAGRAM OF DISTRIBUTION FROM TRANSFORMER NO. 5

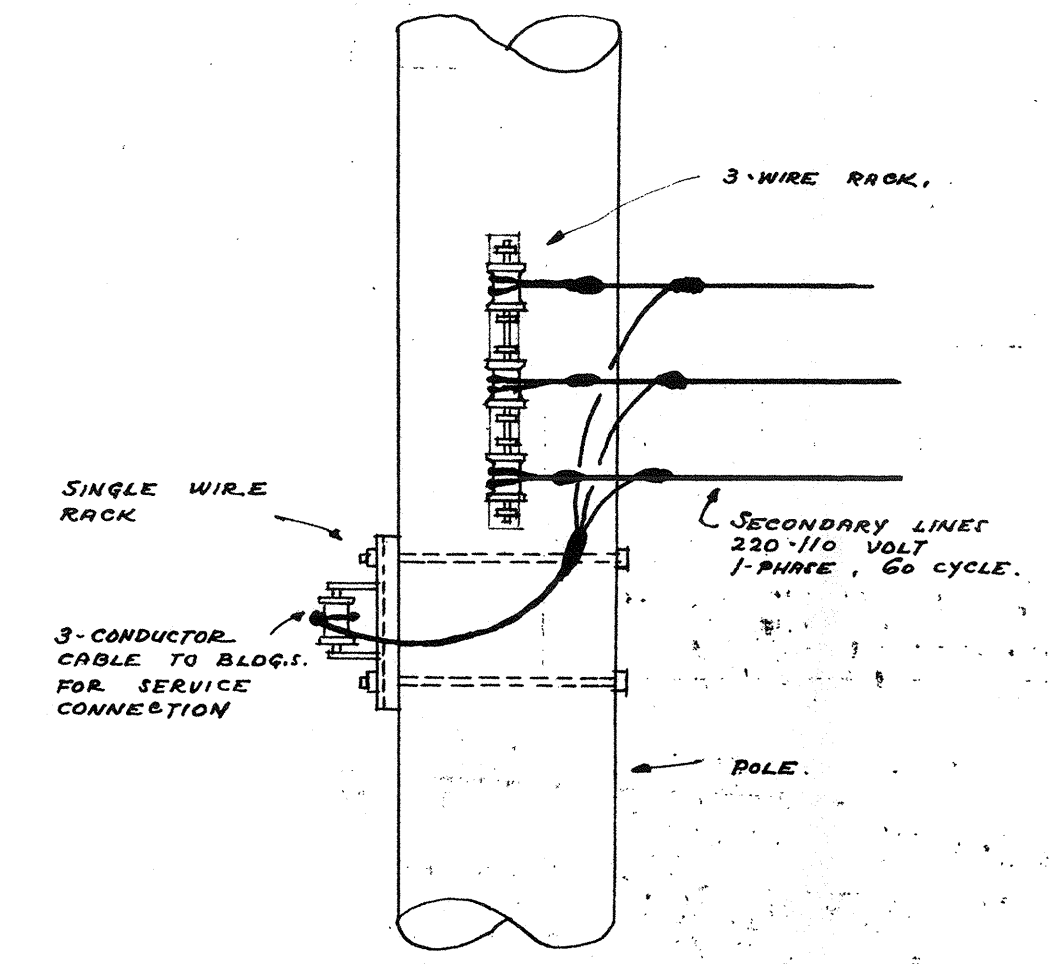
220-110 VOLTS, 1-PHASE, 60 CYCLE



1/2" SCALE DETAIL OF TYPICAL ELECTRIC SERVICE CONNECTION TO BUILDING



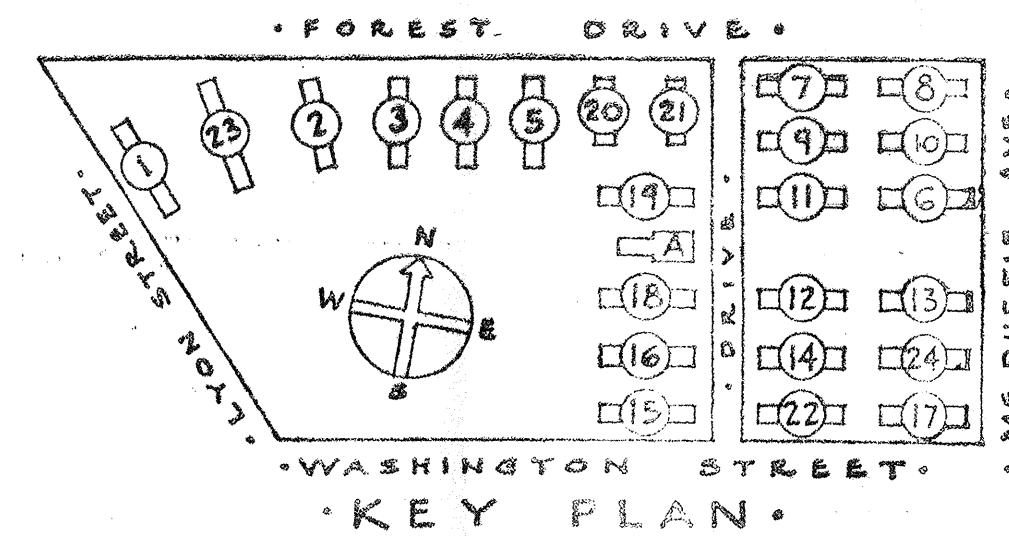
PLAN



ELEVATION

DETAIL OF TYPICAL SERVICE CONNECTION FROM POLE

NO SCALE



SHEET TITLE			
ELECTRICAL DIAGRAMS & DETAILS			
GONZALES GARDENS			
LOW RENT HOUSING PROJECT, COLUMBIA, S. C. 2-1			
DEVELOPED BY THE HOUSING AUTHORITY OF THE CITY OF COLUMBIA, S. C.			
UNDER LOAN CONTRACT WITH UNITED STATES HOUSING AUTHORITY			
CHECKED BY C. D. T.	APPROVED BY UNITED STATES HOUSING AUTHORITY	DATE 9-18-39	SCALE AS NOTED
REVISIONS	APPROVED BY THE HOUSING AUTHORITY OF THE CITY OF COLUMBIA, S. C.	DATE 9-18-39	SHEET NO. E
ARCHITECT JAMES B. URBAN			DATE 9-18-39

OFFICE OF JAMES POSEY CONSULTING ENGINEER