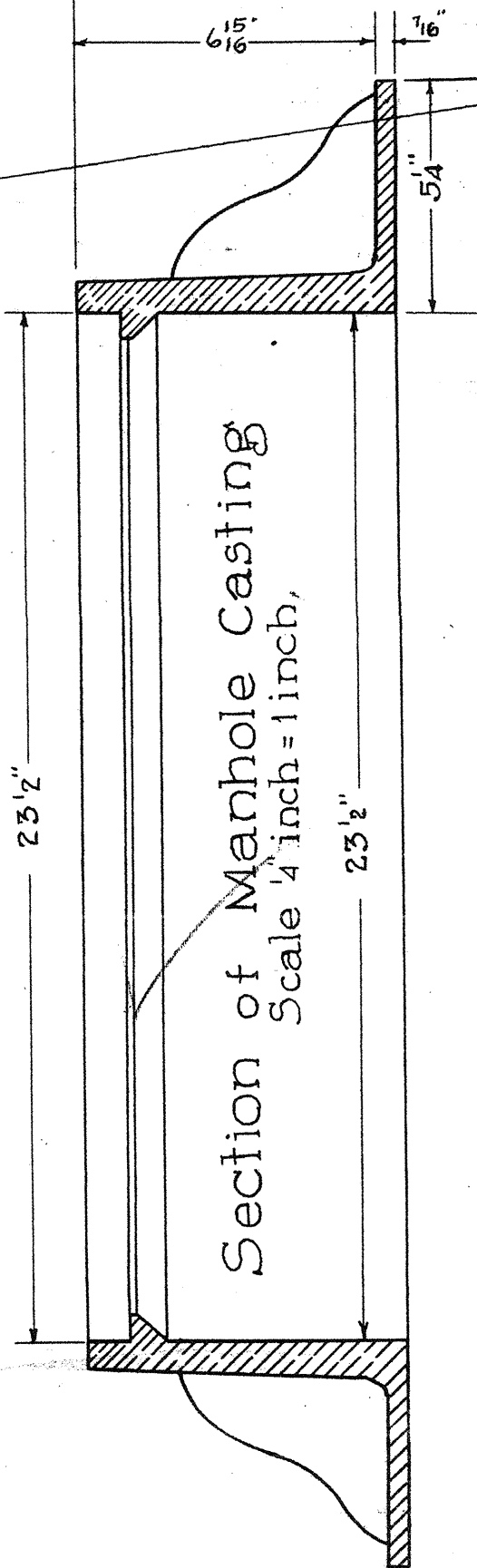
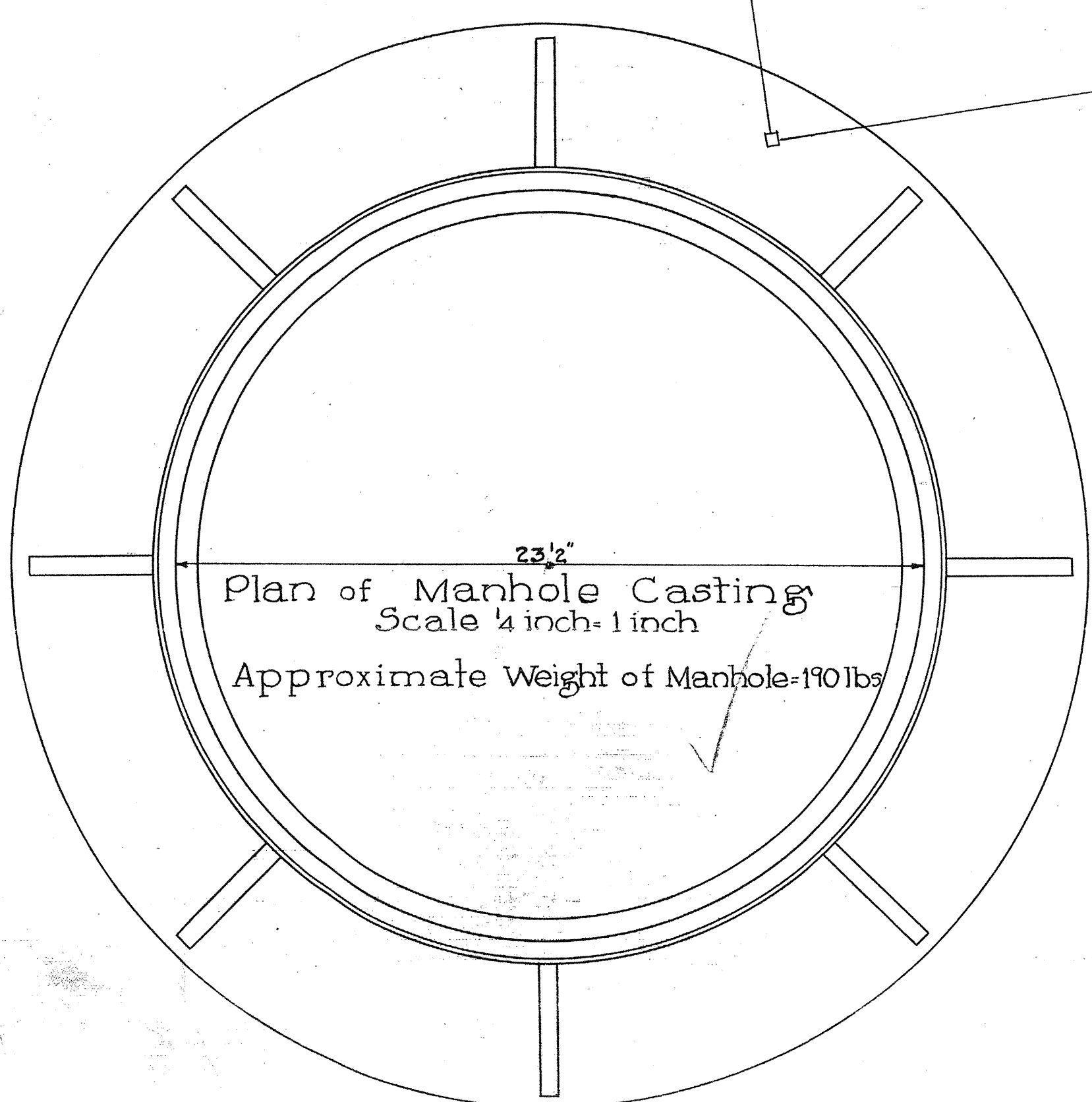


Washington Street
 This storm sewer to be installed by the City of Columbia, S.C.
 Contractor to connect storm sewer to manhole to be constructed by the City of Columbia, S.C. at this point.

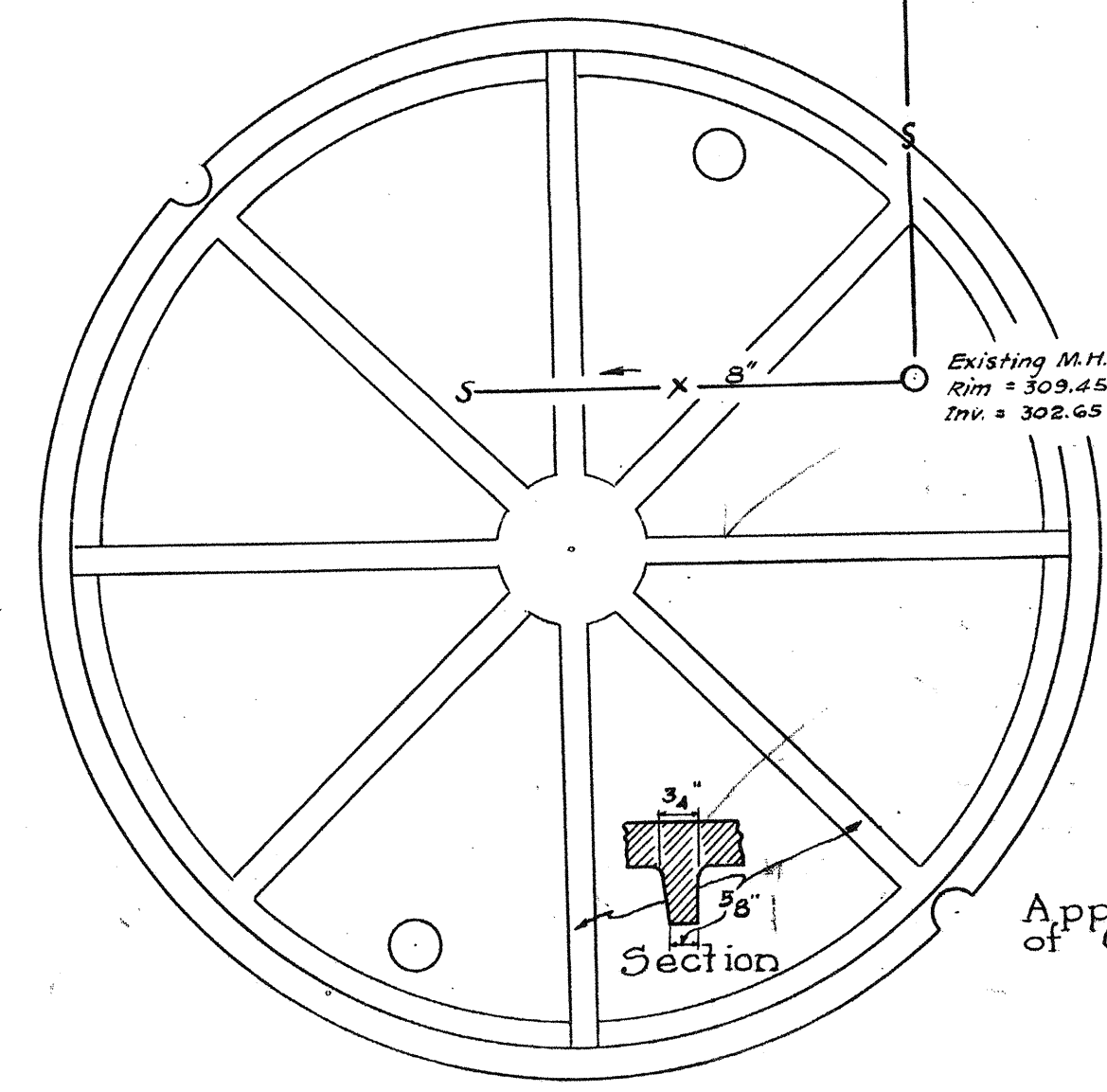
3" Water Meter to be installed by the City of Columbia, S.C. but paid for by the Contractor.
 This water main to be installed by the City of Columbia, S.C. Contractor to connect storm sewer to manhole to be constructed by the City of Columbia, S.C. at this point.

Marshall Street

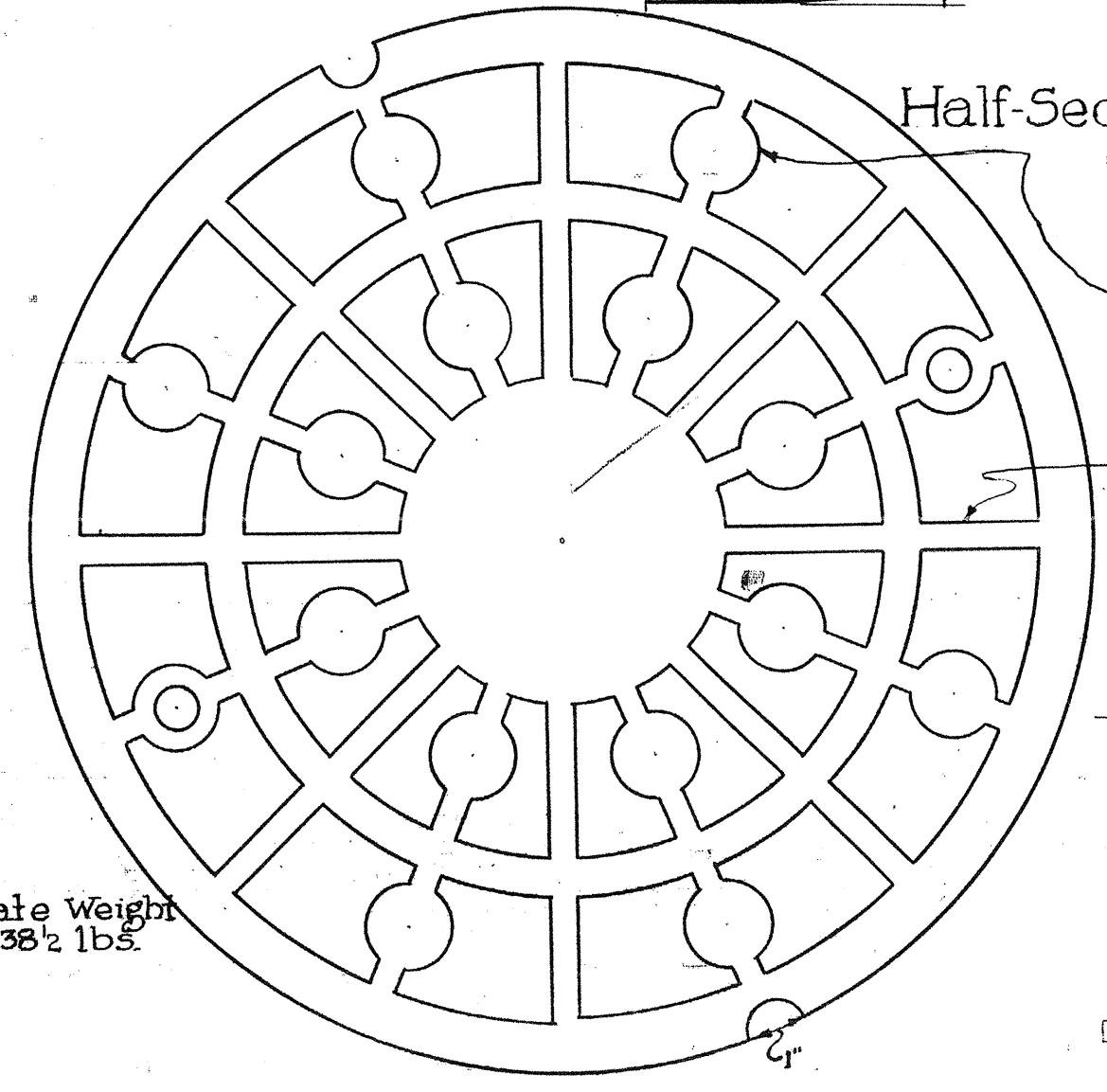
NOTES:
 All sanitary sewers from buildings to mains to be 4".
 For existing utilities see Plan No. 3, Utility Map.
 For other finished grade elevations see Block Plans.
 Design of streets, driveways, paving, curbing and walks dedicated for public use and layout of all utilities in public rights of way are hereby approved by the City of Columbia, S.C.
 W.S. Tomlinson, City Engineer.



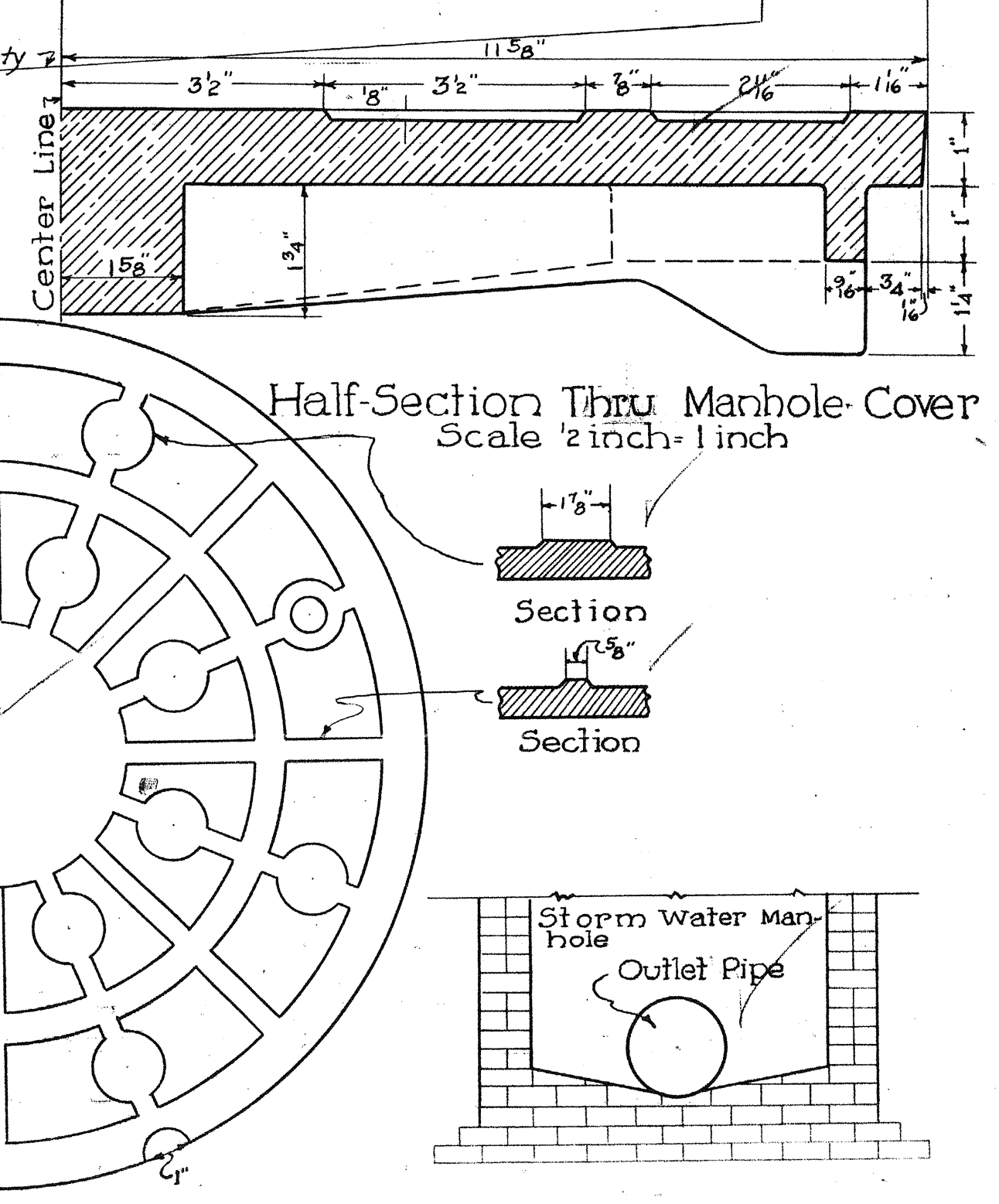
Note
 Details of Manhole Castings and Construction as shown on this sheet are standard for the City of Columbia



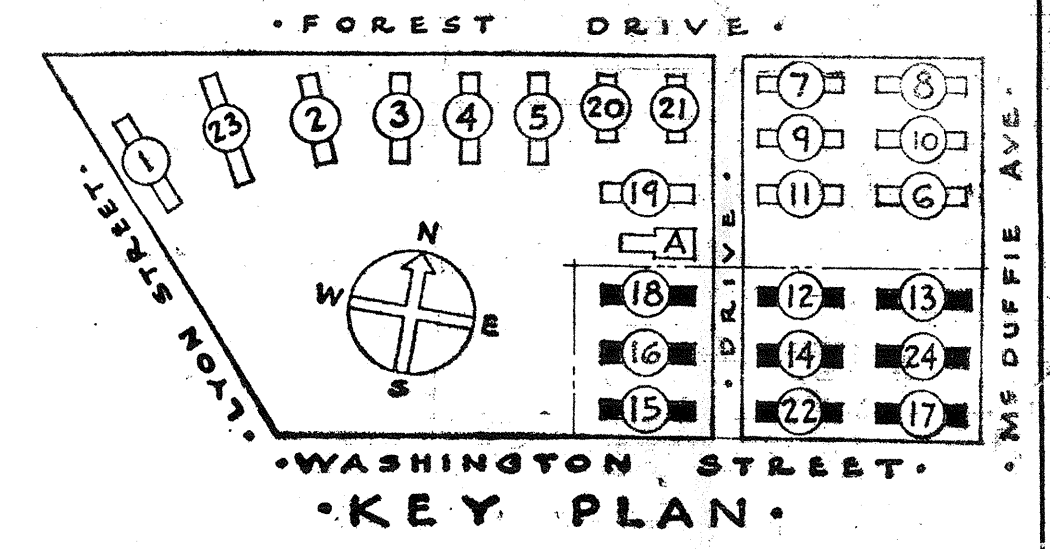
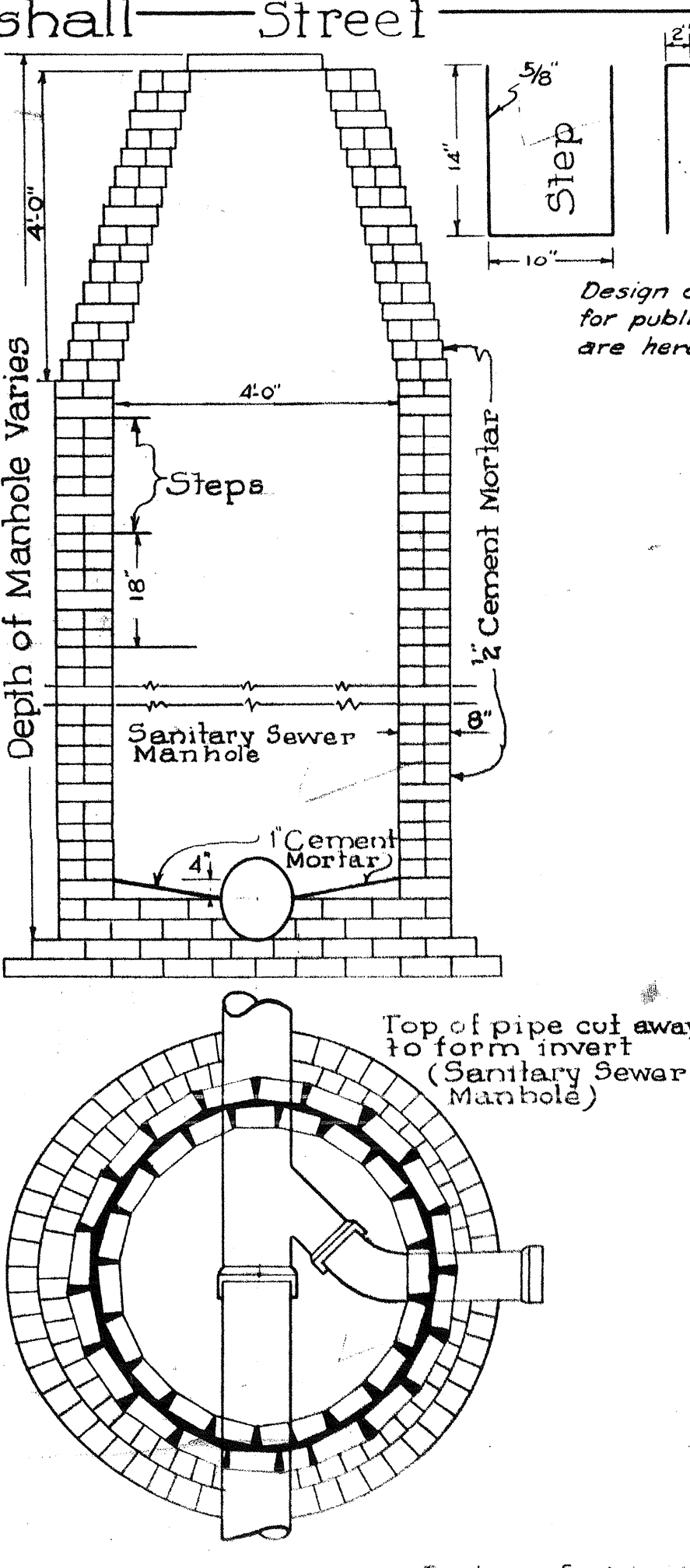
Plan of Under Side of Manhole Cover Scale 1/4 inch = 1 inch



Plan of Top of Manhole Cover Scale 1/4 inch = 1 inch



Plan and Sections of Manholes Scale 1/2 inch = 1 foot



SHEET TITLE PLAN OF BLOCK C		SANITARY & STORM SEWERS WATER LINES AND GAS	
GONZALES GARDENS LOW RENT HOUSING PROJECT, COLUMBIA, S. C. 21			
DEVELOPED BY THE HOUSING AUTHORITY OF THE CITY OF COLUMBIA, S. C.			
UNDER LEASE CONTRACT WITH UNITED STATES HOUSING AUTHORITY			
CHECKED DATE 9-18-29	APPROVED BY UNIFIED STATES HOUSING AUTHORITY	DATE 9-15-29	SCALE 1/25" = 1'-0"
APPROVED BY THE HOUSING AUTHORITY OF THE CITY OF COLUMBIA, S. C.		SHEET NO. OP	
JAMES B. GORDON ARCHITECT COLUMBIA, S. C.		DATE 9-15-29	