

4-Year Public Higher Education

Trends in Undergraduate Enrollment, Tuition, Expenditures and Revenues
in South Carolina, 1999 - 2009

Rebecca Gunnlaugsson, Ph.D.
Economist
South Carolina Department of Commerce



Enrollment & Student Body Composition

Tuition & Fees

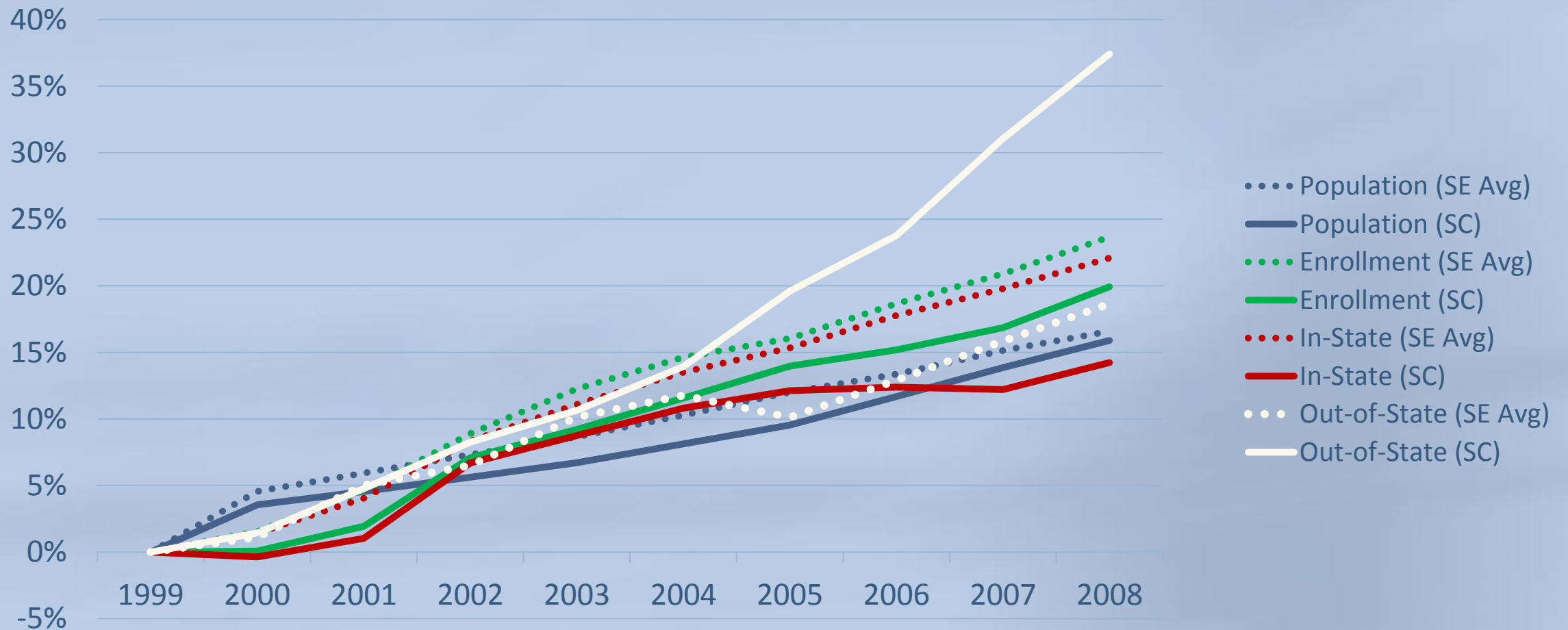
Revenues & Expenditures

State Scholarship Assistance

Enrollment & Student Body Composition

Enrollment Growth

4-Year Public Undergraduate Enrollment by State



Source: Integrated Postsecondary Education Data System (IPEDS), National Center for Education Statistics (NCES); Individual state's commissions and boards of higher education.

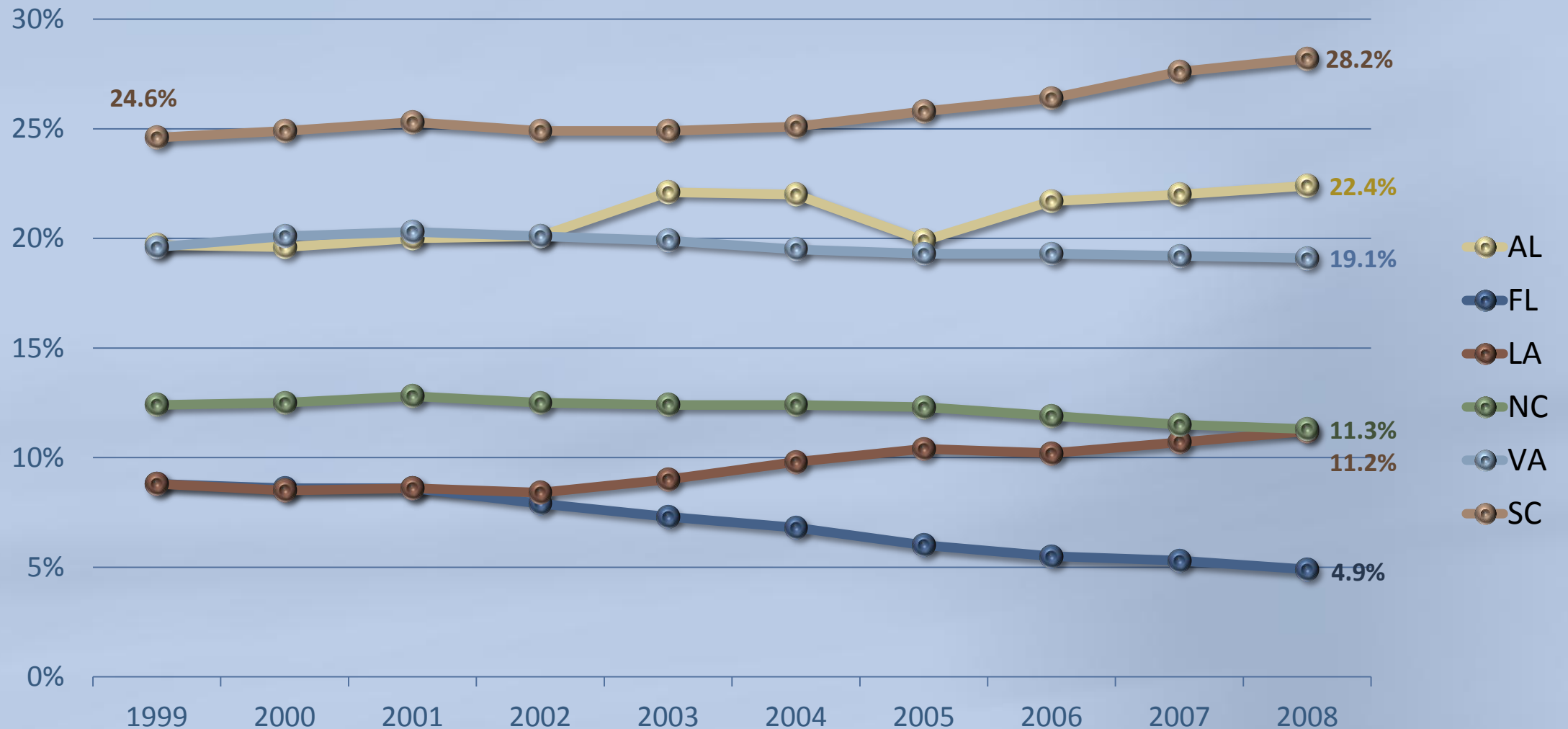
Enrollment

4-Year Public Undergraduate Enrollment by State

| State | In-State | | Out-of-State | | Total | | Population Growth (99-08) |
|----------------|----------------|-----------------|----------------|-----------------|----------------|-----------------|---------------------------|
| | Growth (99-08) | 2008 Enrollment | Growth (99-08) | 2008 Enrollment | Growth (99-08) | 2008 Enrollment | |
| Florida | 41.4% | 222,272 | -24.1% | 11,500 | 35.7% | 233,772 | 21.9% |
| North Carolina | 35.8% | 151,242 | 22.4% | 19,230 | 34.1% | 170,472 | 20.9% |
| Virginia | 18.8% | 125,473 | 15.6% | 29,704 | 18.2% | 155,177 | 13.4% |
| Alabama | 14.6% | 91,849 | 35.1% | 26,489 | 18.6% | 118,338 | 7.0% |
| South Carolina | 14.2% | 56,921 | 37.4% | 22,342 | 19.9% | 79,263 | 15.9% |
| Louisiana | -6.5% | 105,747 | 22.4% | 13,375 | -3.9% | 119,122 | 1.8% |

Enrollment

Percent Out-of-State Undergraduate Students



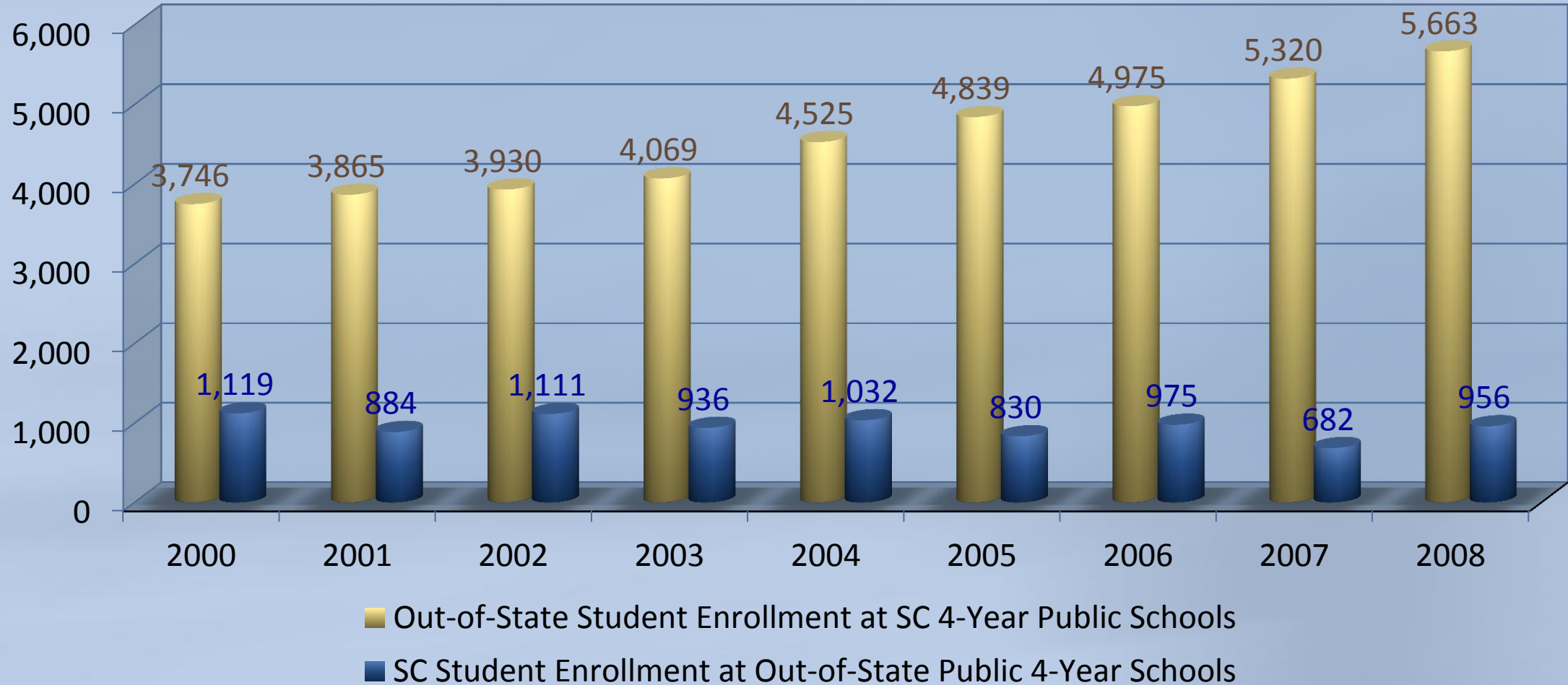
Enrollment

Undergraduate Growth by Institution

| Institution | In-State | | Out-of-State | | Total | |
|---------------------------|----------------|-----------------|----------------|-----------------|----------------|---------------------------|
| | Growth (99-08) | 2008 Enrollment | Growth (99-08) | 2008 Enrollment | Growth (99-08) | % Out-of-State Enrollment |
| Coastal Carolina Univ. | 52.1% | 3,905 | 103.4% | 3,668 | 73.3% | 48.4% |
| U.S.C. - Upstate | 44.0% | 4,687 | 31.6% | 312 | 43.2% | 6.2% |
| U.S.C. - Columbia | 8.7% | 13,693 | 105.2% | 6,072 | 27.1% | 30.7% |
| Francis Marion University | 23.7% | 3,283 | -31.1% | 186 | 18.7% | 5.4% |
| The Citadel | 5.6% | 1,036 | 28.5% | 1,252 | 17.0% | 54.7% |
| Winthrop University | 8.2% | 4,353 | 21.8% | 715 | 9.9% | 14.1% |
| Clemson University | 6.7% | 10,007 | 13.4% | 4,706 | 8.8% | 32.0% |
| S.C. State University | 10.7% | 3,454 | -17.5% | 699 | 4.7% | 16.8% |
| Lander University | 2.1% | 2,367 | 22.9% | 188 | 3.4% | 7.4% |
| College of Charleston | 0.3% | 5,955 | 1.5% | 3,829 | 0.7% | 39.1% |
| U.S.C. – Aiken | 4.9% | 2,746 | -29.7% | 332 | -0.4% | 10.8% |

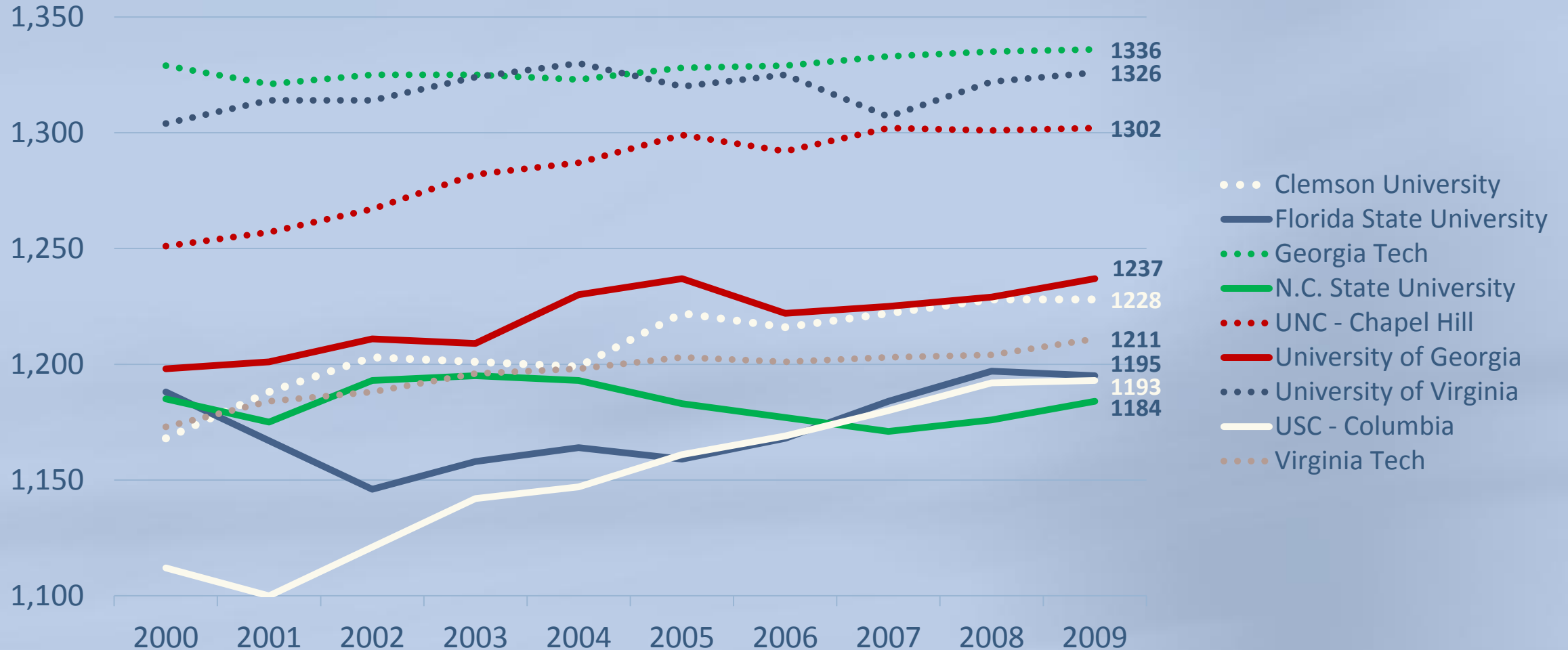
Enrollment

First Year Out-of-State Enrollment at SC Public 4-Year Institutions Vs.
First Year SC Student Enrollment at Out-of-State 4-Year Public Institutions



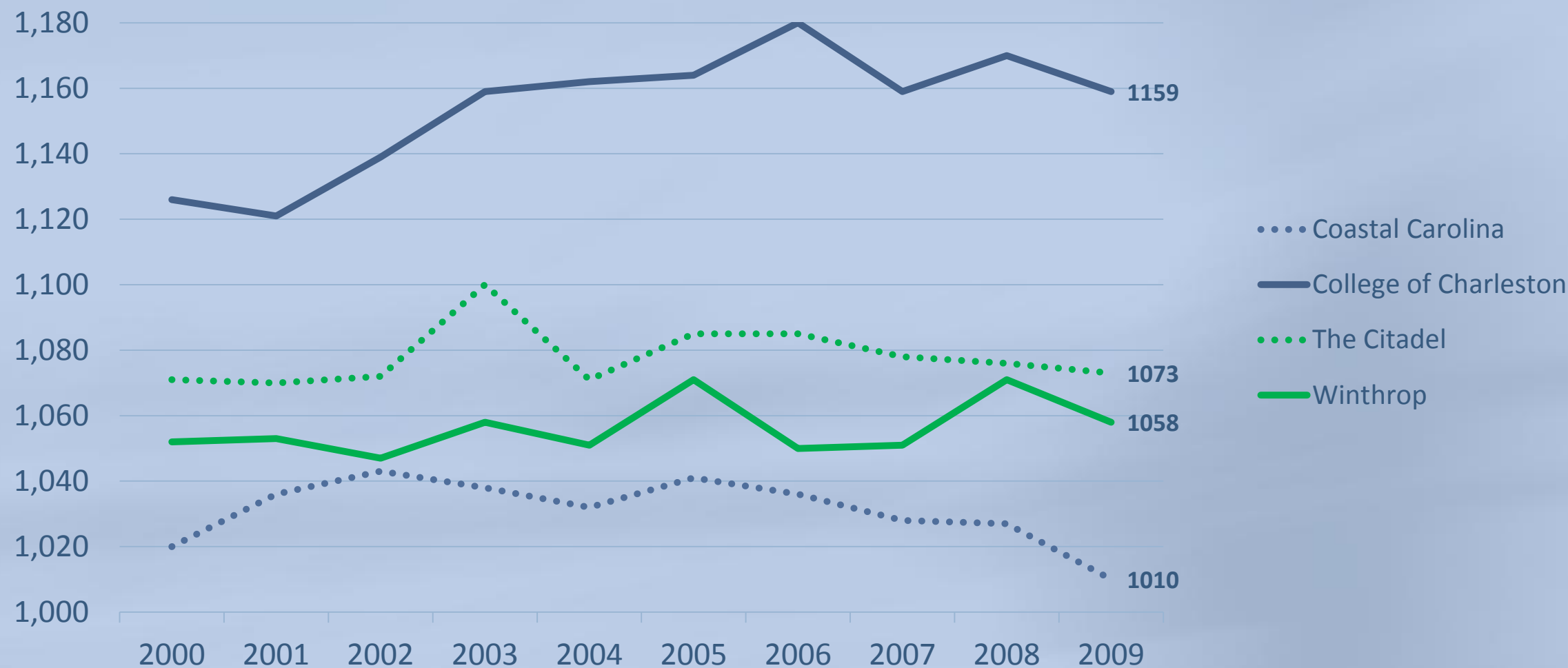
Enrollment

Entering Student SAT Scores (Research Institutions)



Enrollment

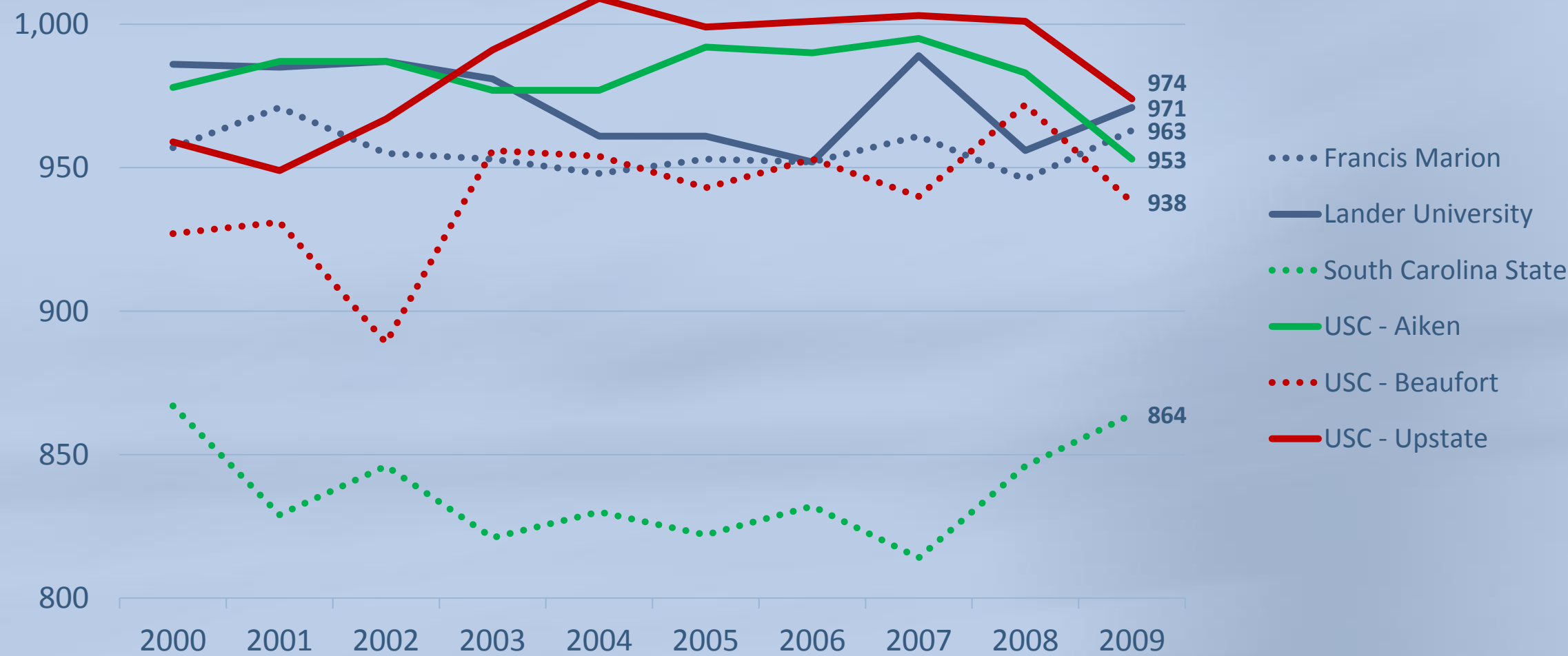
Entering Student SAT Scores (Comprehensive Institutions)



Source: South Carolina Commission on Higher Education, http://www.che.sc.gov/New_Web/Data&Pubs.htm).

Enrollment

Entering Student SAT Scores (Comprehensive Institutions)

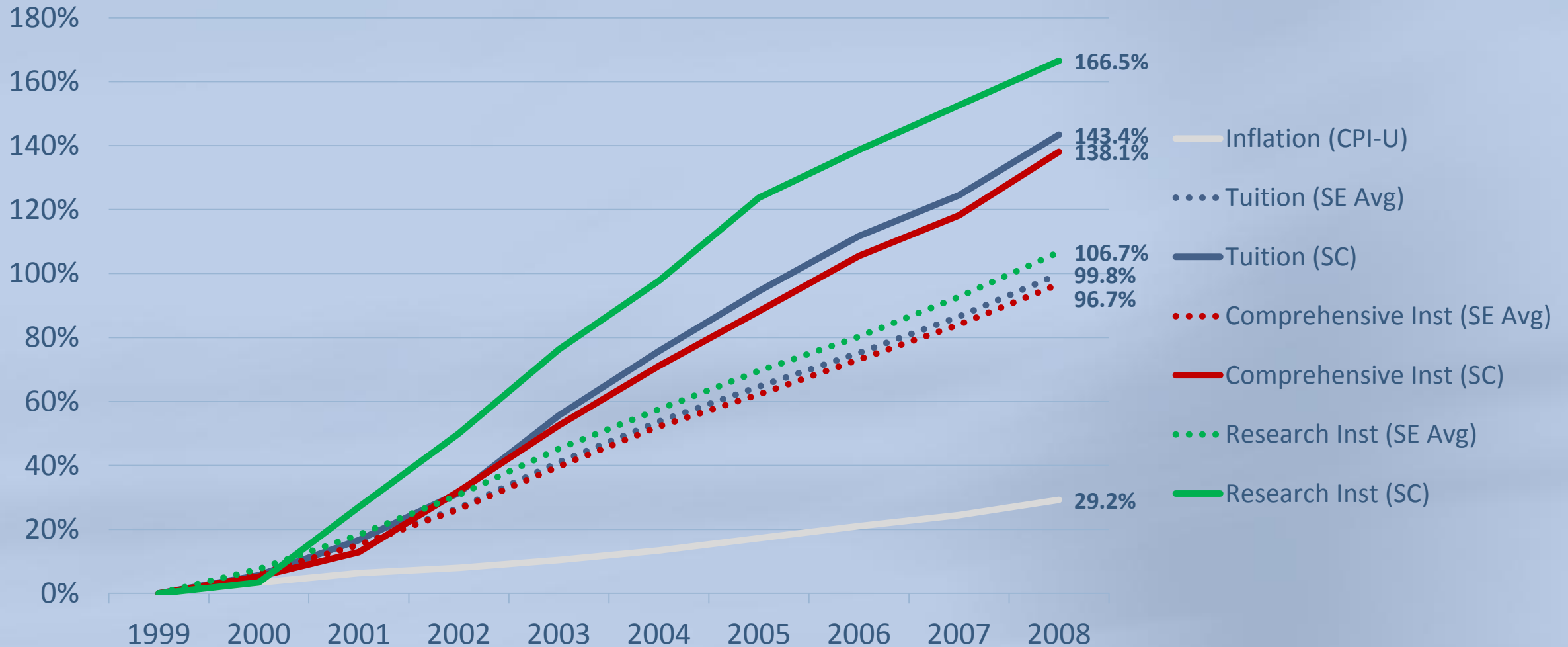


Source: South Carolina Commission on Higher Education, http://www.che.sc.gov/New_Web/Data&Pubs.htm).

Tuition & Fees

Tuition & Fees

In-State Tuition Growth, 1999-2008



Sources: Alabama Commission on Higher Education, <http://www.ache.alabama.gov/Reports/Index.htm>; Louisiana Board of Regents, <http://www.regents.louisiana.gov/Reports/datapub.aspx>; Florida Board of Governors, <http://www.flbog.org/resources/iud/>; The University of North Carolina, http://www.northcarolina.edu/stat_abstract/index.php; South Carolina Commission on Higher Education, http://www.che.sc.gov/New_Web/Data&Pubs.htm; State Council of Higher Education for Virginia, <http://research.schev.edu/>; Tennessee Board of Regents, http://www.tbr.state.tn.us/offices/academicaffairs.aspx?id=496&ekmensen=c580fa7b_36_0_496_3; Mississippi Board of Trustees of State Institutions of Higher Learning, <http://www.mississippi.edu/research/stats.html>; Board of Regents of the University System of Georgia, <http://www.usg.edu/research/students/enroll/>

Tuition & Fees

Research Colleges

| State | In-State | | Out-of-State | |
|----------------|-------------------|-----------------|-------------------|-----------------|
| | Growth (99-08) | 2008 Tuition | Growth (99-08) | 2008 Tuition |
| South Carolina | 166.5% | \$9,608 | 140.3% | \$23,154 |
| North Carolina | 125.7% | \$5,336 | 72.9% | \$19,934 |
| Virginia | 109.0% | \$6,189 | 114.0% | \$18,461 |
| Alabama | 107.1% | \$6,219 | 119.5% | \$16,375 |
| Tennessee | 106.1% | \$7,799 | 67.8% | \$22,184 |
| Georgia | 100.9% | \$6,042 | 121.6% | \$22,716 |
| Louisiana | 78.4% | \$5,086 | 95.7% | \$13,800 |
| Florida | 77.7% | \$3,937 | 96.5% | \$18,091 |
| Mississippi | 71.7% | \$5,117 | 114.4% | \$13,039 |

Comprehensive Colleges

| State | In-State | | Out-of-State | |
|----------------|-------------------|-----------------|-------------------|-----------------|
| | Growth (99-08) | 2008 Tuition | Growth (99-08) | 2008 Tuition |
| South Carolina | 138.1% | \$8,338 | 135.1% | \$17,257 |
| North Carolina | 109.8% | \$3,800 | 53.4% | \$13,603 |
| Tennessee | 107.1% | \$5,334 | 107.1% | \$16,080 |
| Alabama | 106.0% | \$5,466 | 102.6% | \$11,076 |
| Virginia | 100.5% | \$7,198 | 82.6% | \$17,843 |
| Georgia | 78.8% | \$4,087 | 83.5% | \$13,772 |
| Mississippi | 71.2% | \$4,486 | 107.6% | \$11,511 |
| Louisiana | 70.6% | \$3,606 | 28.3% | \$9,055 |
| Florida | 65.1% | \$3,682 | 83.3% | \$16,902 |

Sources: Alabama Commission on Higher Education, <http://www.ache.alabama.gov/Reports/Index.htm>; Louisiana Board of Regents, <http://www.regents.louisiana.gov/Reports/datapub.aspx>; Florida Board of Governors, <http://www.flbog.org/resources/iud/>; The University of North Carolina, http://www.northcarolina.edu/stat_abstract/index.php; South Carolina Commission on Higher Education, http://www.che.sc.gov/New_Web/Data&Pubs.htm; State Council of Higher Education for Virginia, <http://research.schev.edu/>; Tennessee Board of Regents, http://www.tbr.state.tn.us/offices/academicaffairs.aspx?id=496&ekmense=c580fa7b_36_0_496_3; Mississippi Board of Trustees of State Institutions of Higher Learning, <http://www.mississippi.edu/research/stats.html>; Board of Regents of the University System of Georgia, <http://www.usg.edu/research/students/enroll/>

Tuition & Fees

Out-of-State Students Paying Out-of-State Tuition, 2000-2009



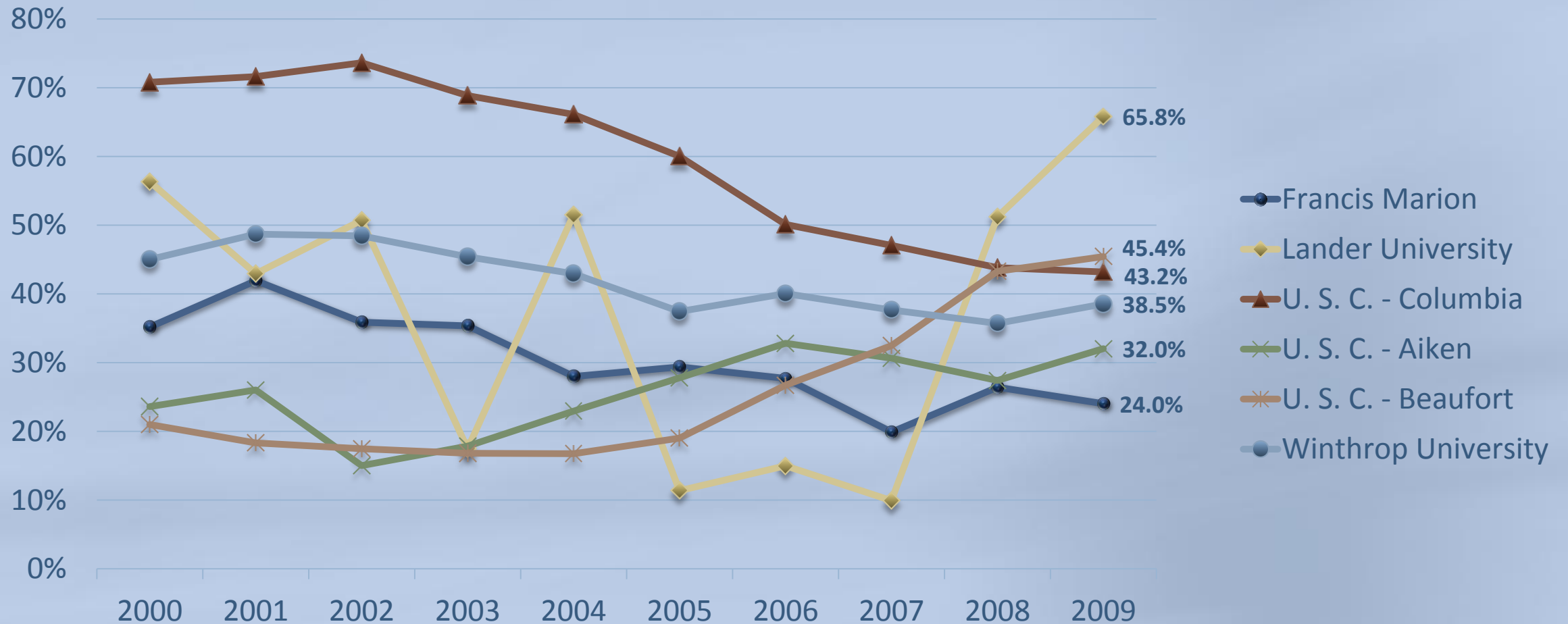
Tuition & Fees

Out-of-State Students Paying Out-of-State Tuition, 2000-2009



Tuition & Fees

Out-of-State Students Paying Out-of-State Tuition, 2000-2009



Revenues & Expenditures

Revenues & Expenditures

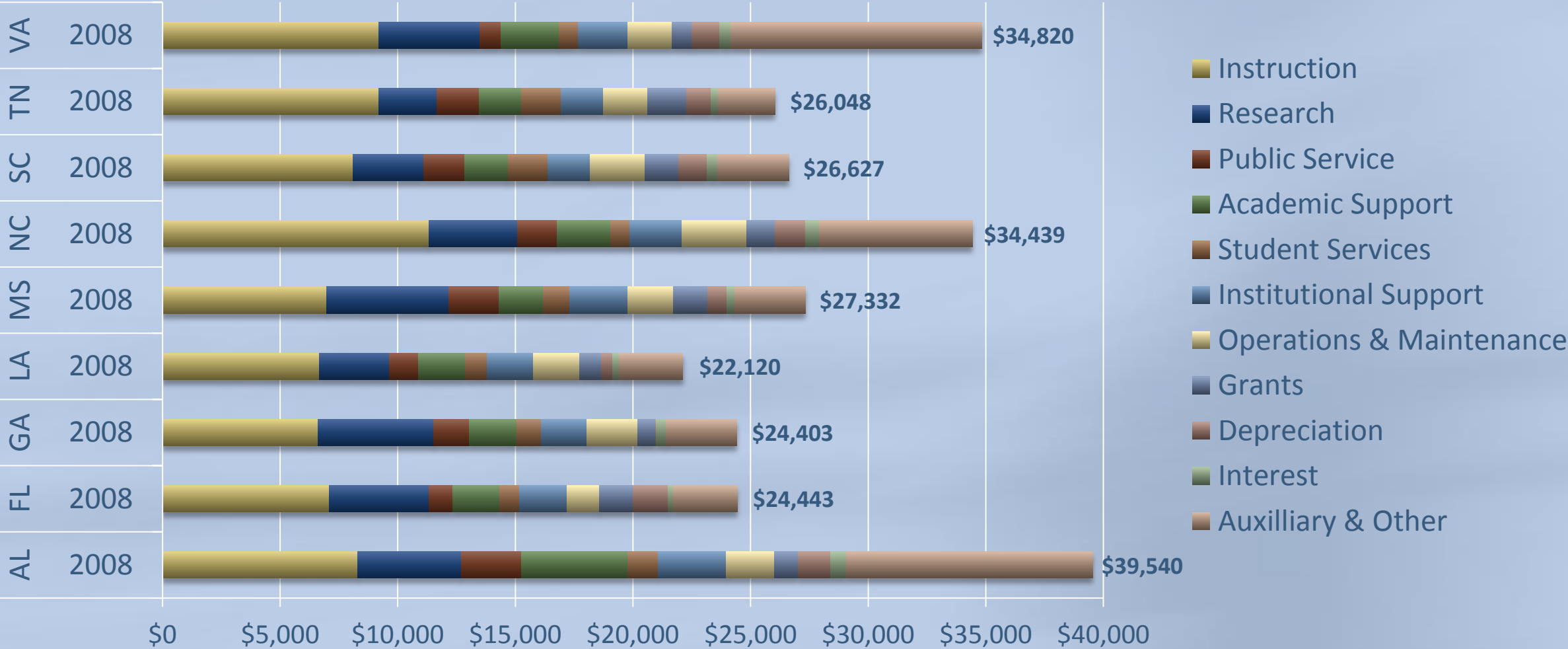
Growth per FTES, 1999-2007



Sources: Alabama Commission on Higher Education, <http://www.ache.alabama.gov/Reports/Index.htm>; Louisiana Board of Regents, <http://www.regents.louisiana.gov/Reports/datapub.aspx>; Florida Board of Governors, <http://www.flbog.org/resources/iud/>; The University of North Carolina, http://www.northcarolina.edu/stat_abstract/index.php; South Carolina Commission on Higher Education, http://www.che.sc.gov/New_Web/Data&Pubs.htm; State Council of Higher Education for Virginia, <http://research.schev.edu/>; Tennessee Board of Regents, http://www.tbr.state.tn.us/offices/academicaaffairs.aspx?id=496&ekmense=c580fa7b_36_0_496_3; Mississippi Board of Trustees of State Institutions of Higher Learning, <http://www.mississippi.edu/research/stats.html>; Board of Regents of the University System of Georgia, <http://www.usg.edu/research/students/enroll/>

Expenditures

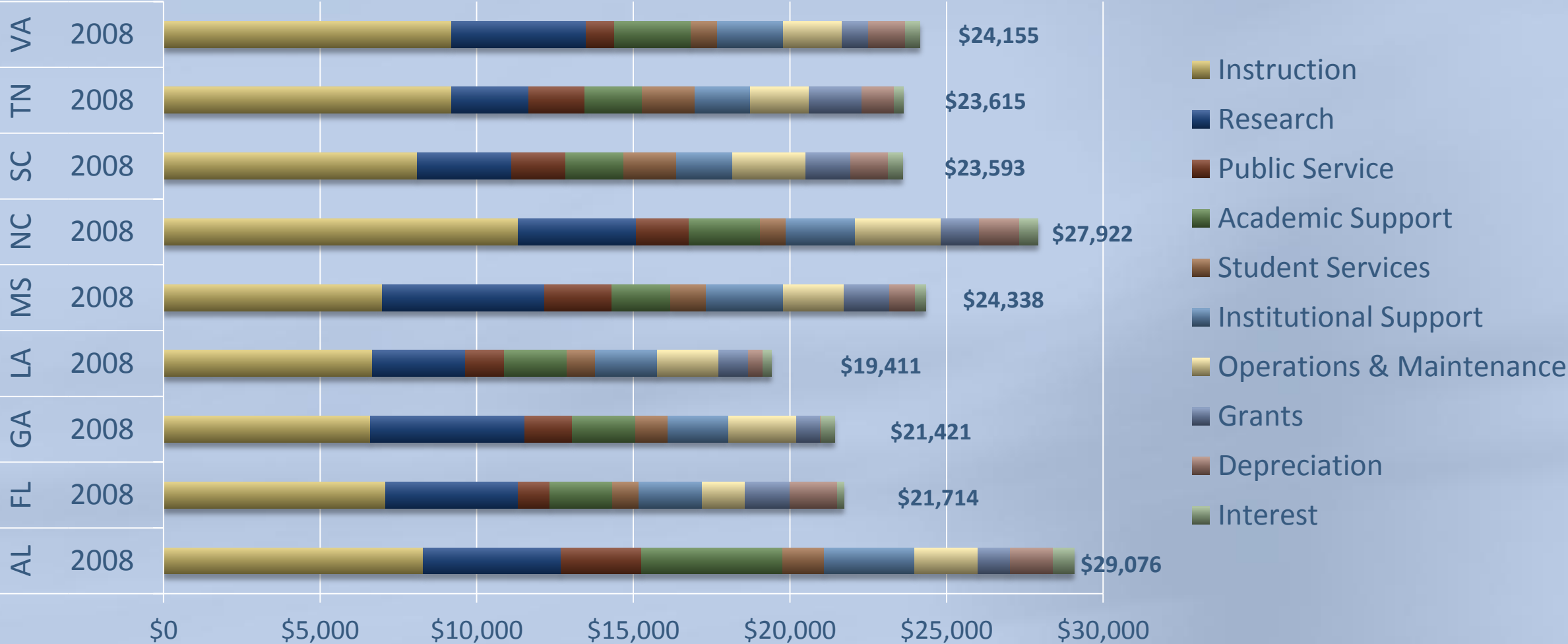
Per FTES, Categorized by State, 2007-2008



Source: Integrated Postsecondary Education Data System (IPEDS), National Center for Education Statistics (NCES).

Expenditures

Per FTES, Categorized by State, 2007-2008 (without Auxiliary & Other)



Source: Integrated Postsecondary Education Data System (IPEDS), National Center for Education Statistics (NCES).

Expenditures

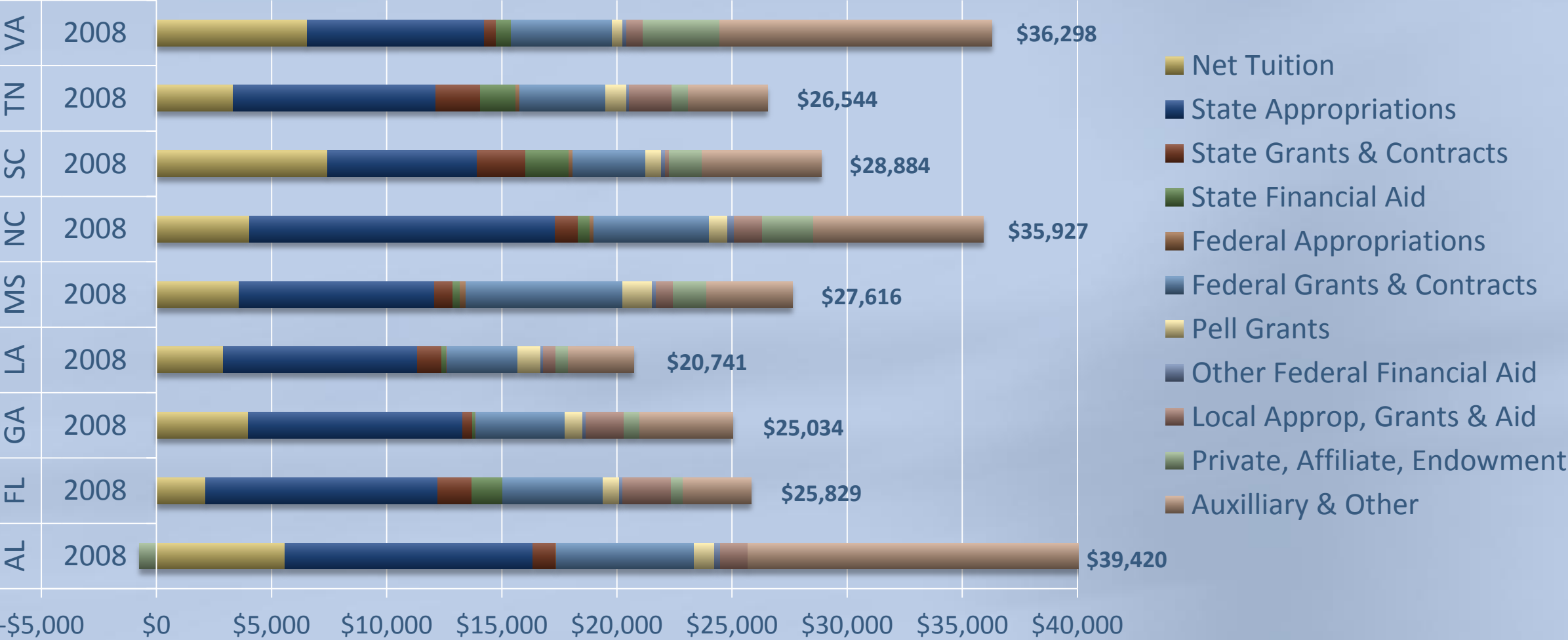
Per FTES, Categorized by Institution, 2007-2008



Source: Integrated Postsecondary Education Data System (IPEDS), National Center for Education Statistics (NCES).

Revenues

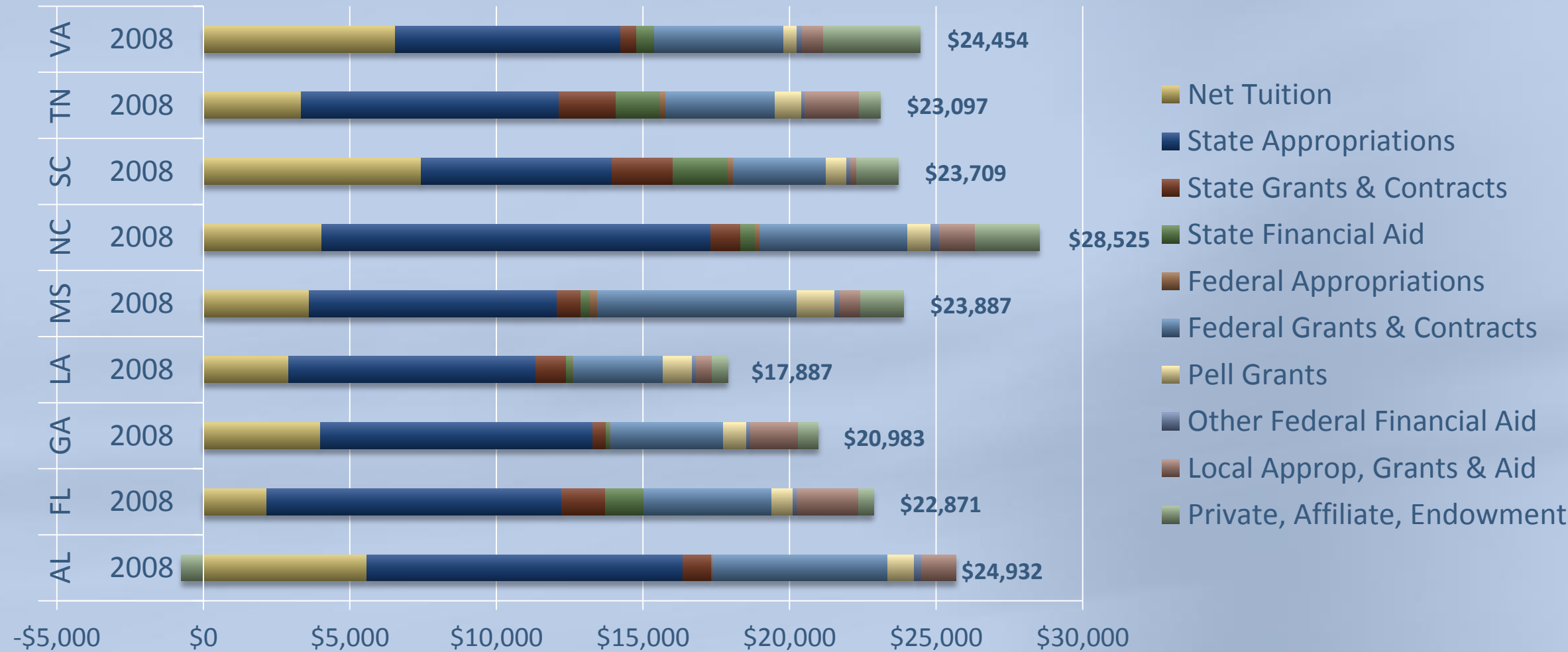
Per FTES, Categorized by State, 2007-2008



Source: Integrated Postsecondary Education Data System (IPEDS), National Center for Education Statistics (NCES).

Revenues

Per FTES, Categorized by State, 2007-2008 (without Auxiliary & Other)



Source: Integrated Postsecondary Education Data System (IPEDS), National Center for Education Statistics (NCES).

Revenues

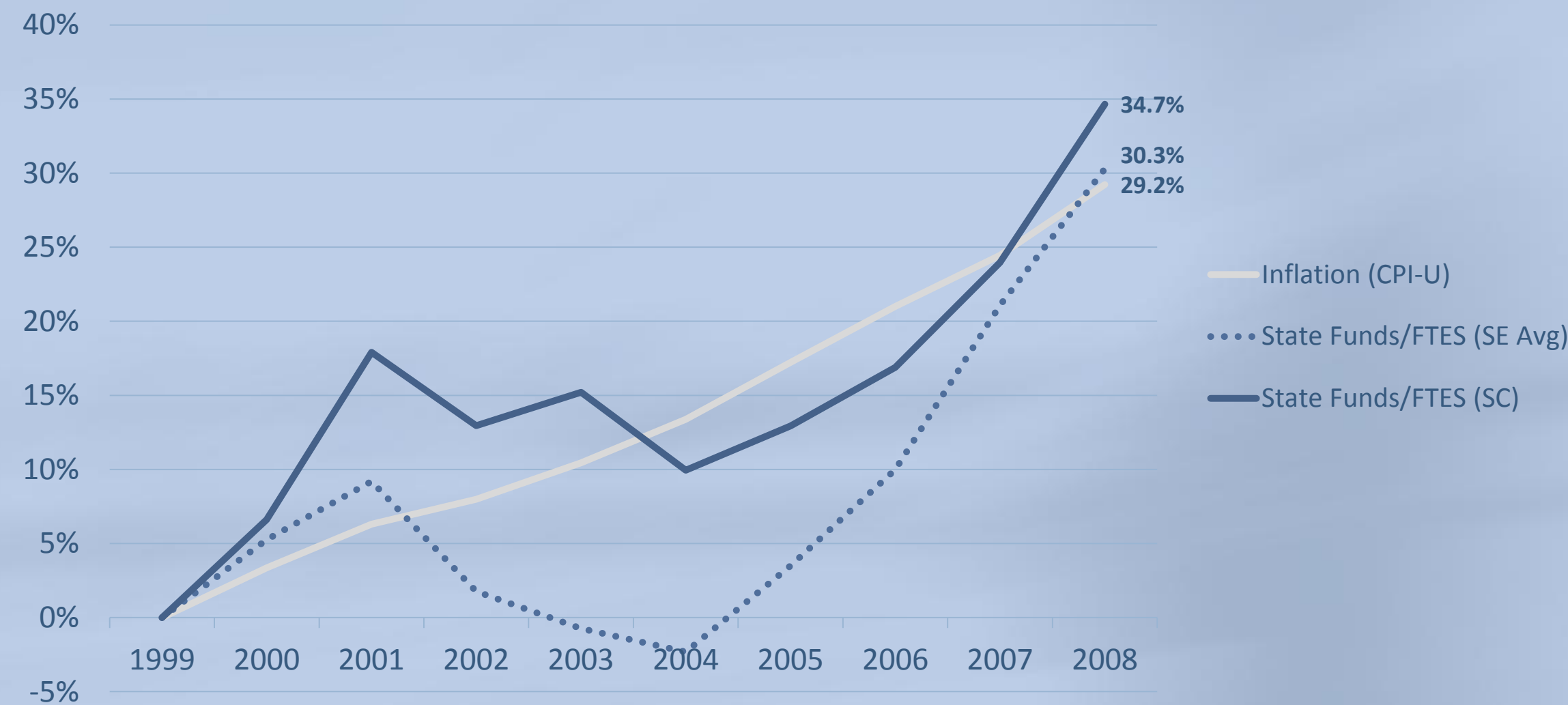
Per FTES, Categorized by Institution, 2007-2008



Source: Integrated Postsecondary Education Data System (IPEDS), National Center for Education Statistics (NCES).

Revenues

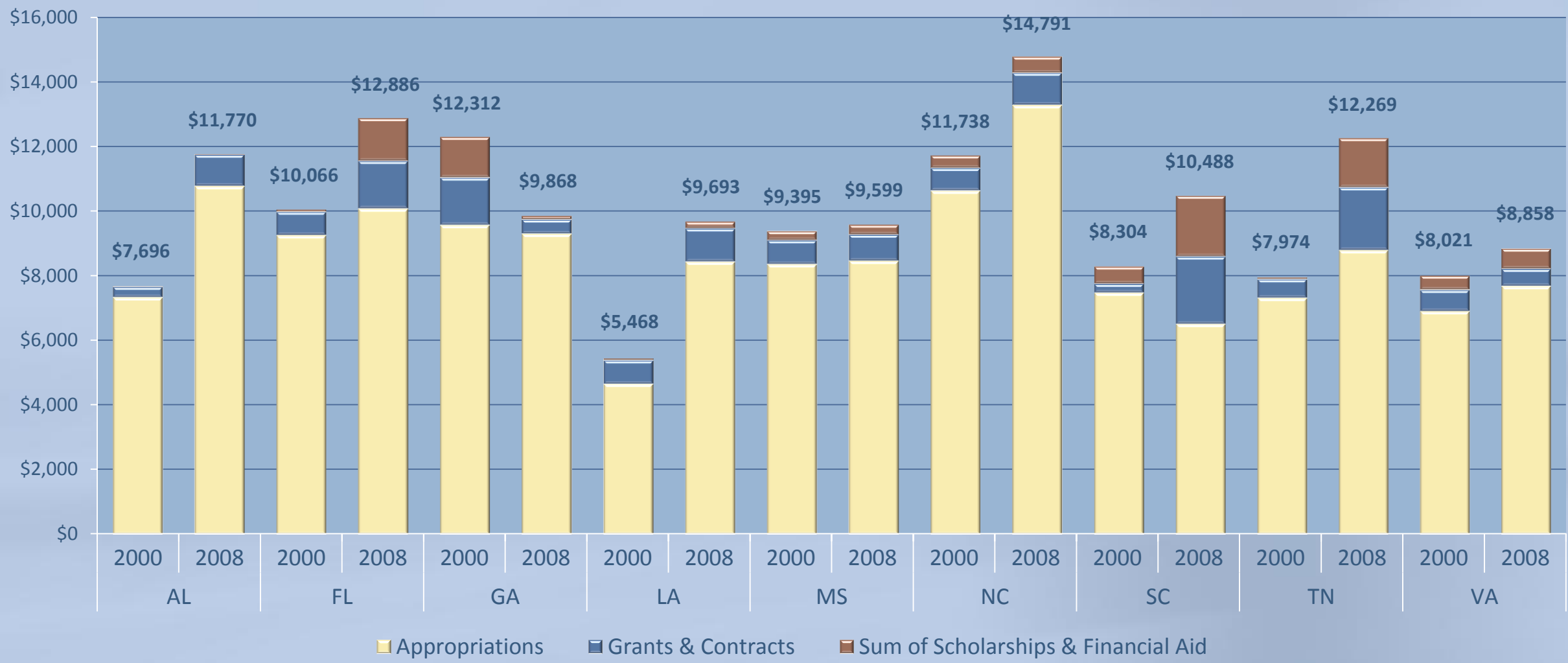
State Funding Growth per FTES, 1998-99 to 2007-08



Source: Integrated Postsecondary Education Data System (IPEDS), National Center for Education Statistics (NCES).

Revenues

State Funding Allocation per FTES, 1999-00 vs. 2007-08

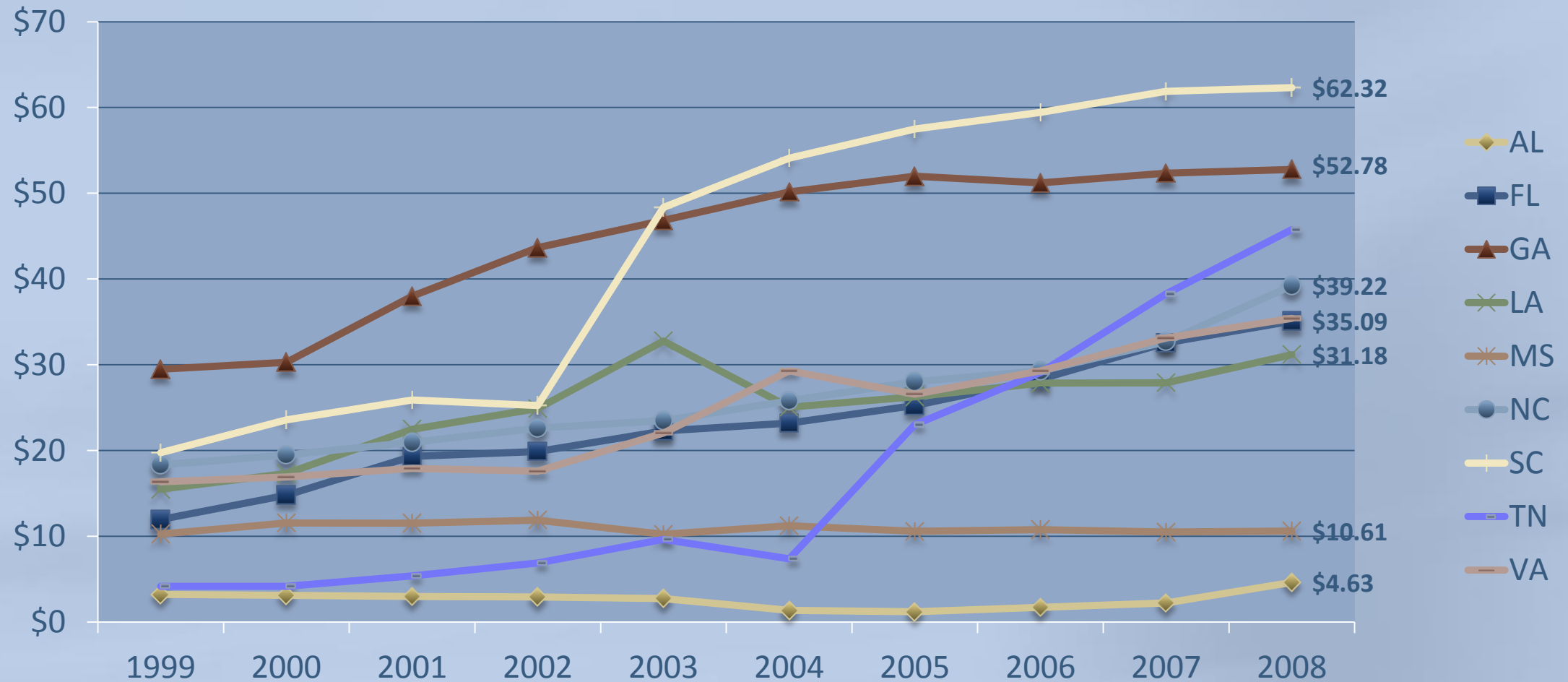


Source: Integrated Postsecondary Education Data System (IPEDS), National Center for Education Statistics (NCES); Note: Georgia's HOPE scholarship data appears unaccounted in IPEDS data.

State Scholarship Assistance

Scholarship Assistance

Per-Capita State Scholarship, Grant & Financial Aid

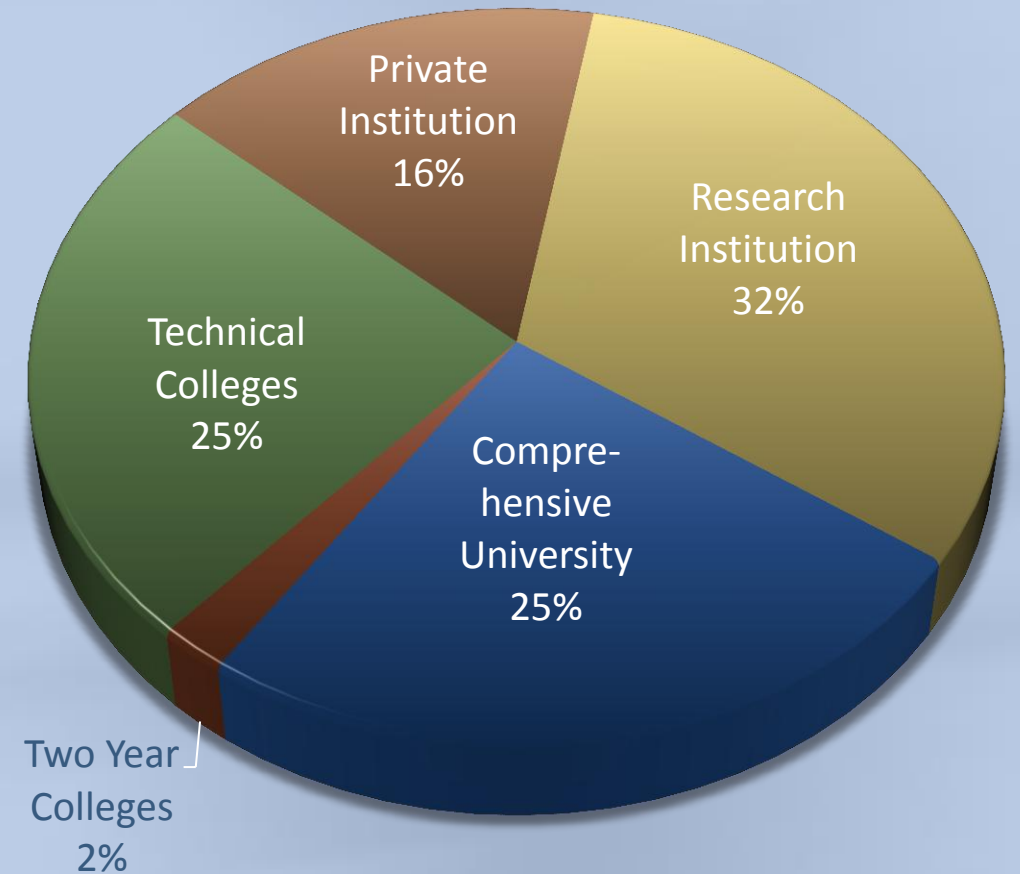


Scholarship Assistance

SC State Lottery Scholarship Funding

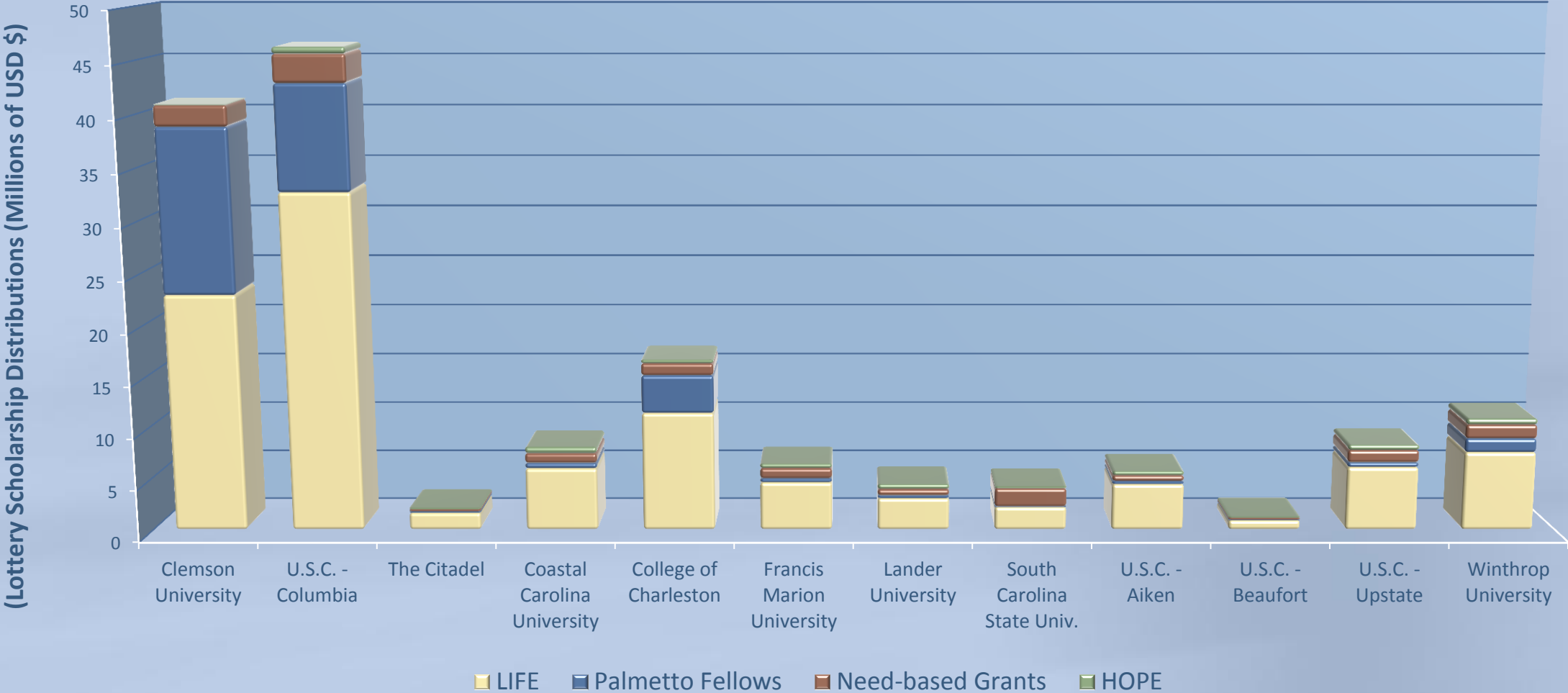
● South Carolina Education Lottery Act: 2008-09 Distribution

- Palmetto Fellows Scholarship: **\$30,277,240** (avg. \$7,945)
- LIFE Scholarship: **\$85,256,682** (avg. \$5,277)
- HOPE Scholarship: **\$8,076,110** (avg. \$2,574)
- Need-based Grants: **\$11,631,566** (avg. \$1,615)
- Lottery Tuition Assistance: **\$47,000,000** (avg. \$1,044)
- **TOTAL: \$182,241,598**



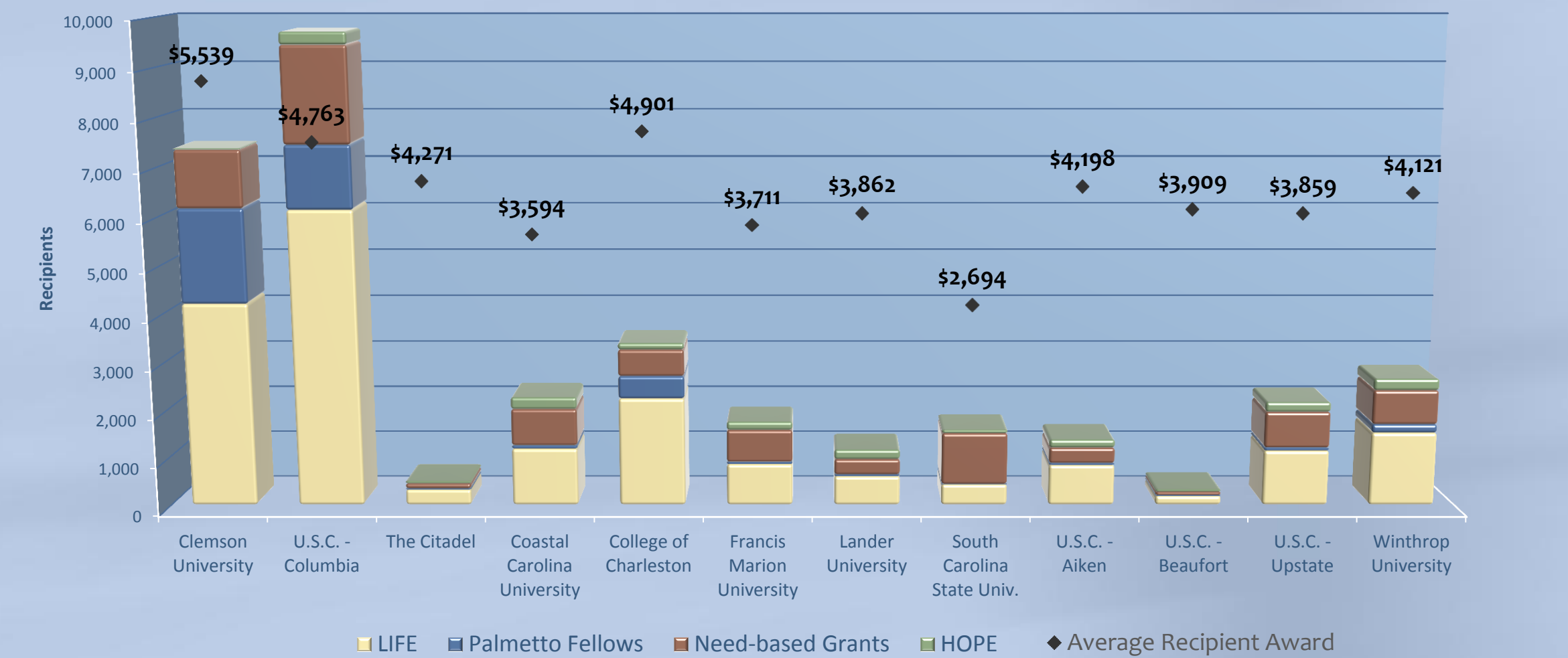
Scholarship Assistance

Monetary Distribution by Institution



Scholarship Assistance

Recipient Distribution by Institution



Key Findings

South Carolina Public 4-Year Colleges & Universities

- Tuition rates have increased 143.4% since 1999, the highest among SE states.
- SC ranks first in percentage of out-of-state students among SE states.
 - Out-of-state enrollment increases since 1999 are the highest among SE states at 37.4%
 - In-state enrollment increases are the 2nd lowest at 14.2%.
- South Carolina provides the highest per-capita scholarship assistance among SE states.
- State funding per FTES has grown 34.7% since 1999, while composition has changed
 - General appropriations (62.2%); Grants & Contracts (19.9%); Scholarships & Financial Aid (17.9%)