
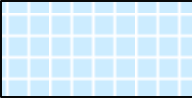
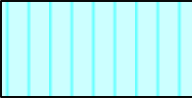





SOUTH CAROLINA
DEPARTMENT OF LABOR, LICENSING AND REGULATION
ORGANIZATIONAL CHART

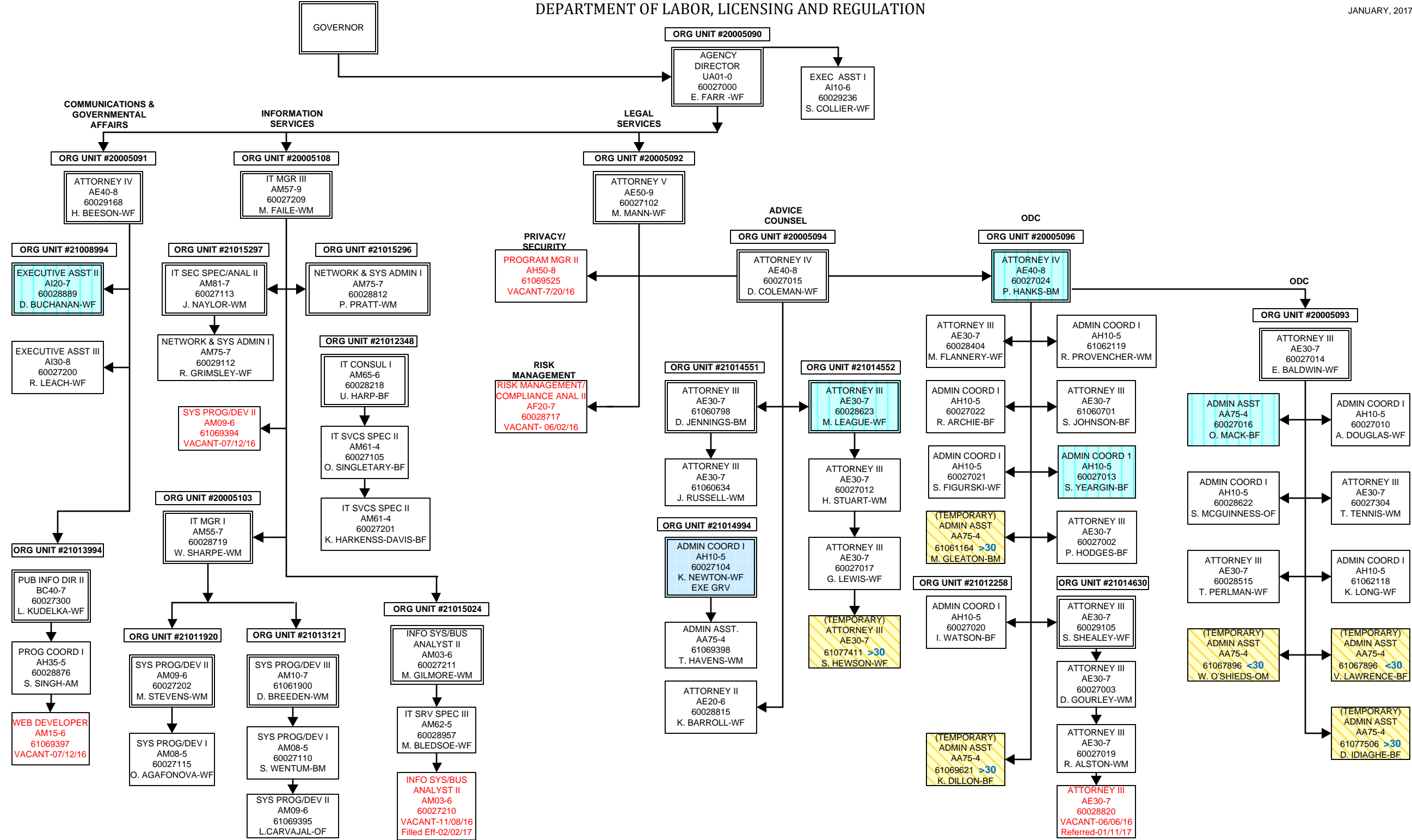
JANUARY 2017

**SOUTH CAROLINA
DEPARTMENT OF LABOR, LICENSING AND REGULATION
ORGANIZATIONAL CHARTS**

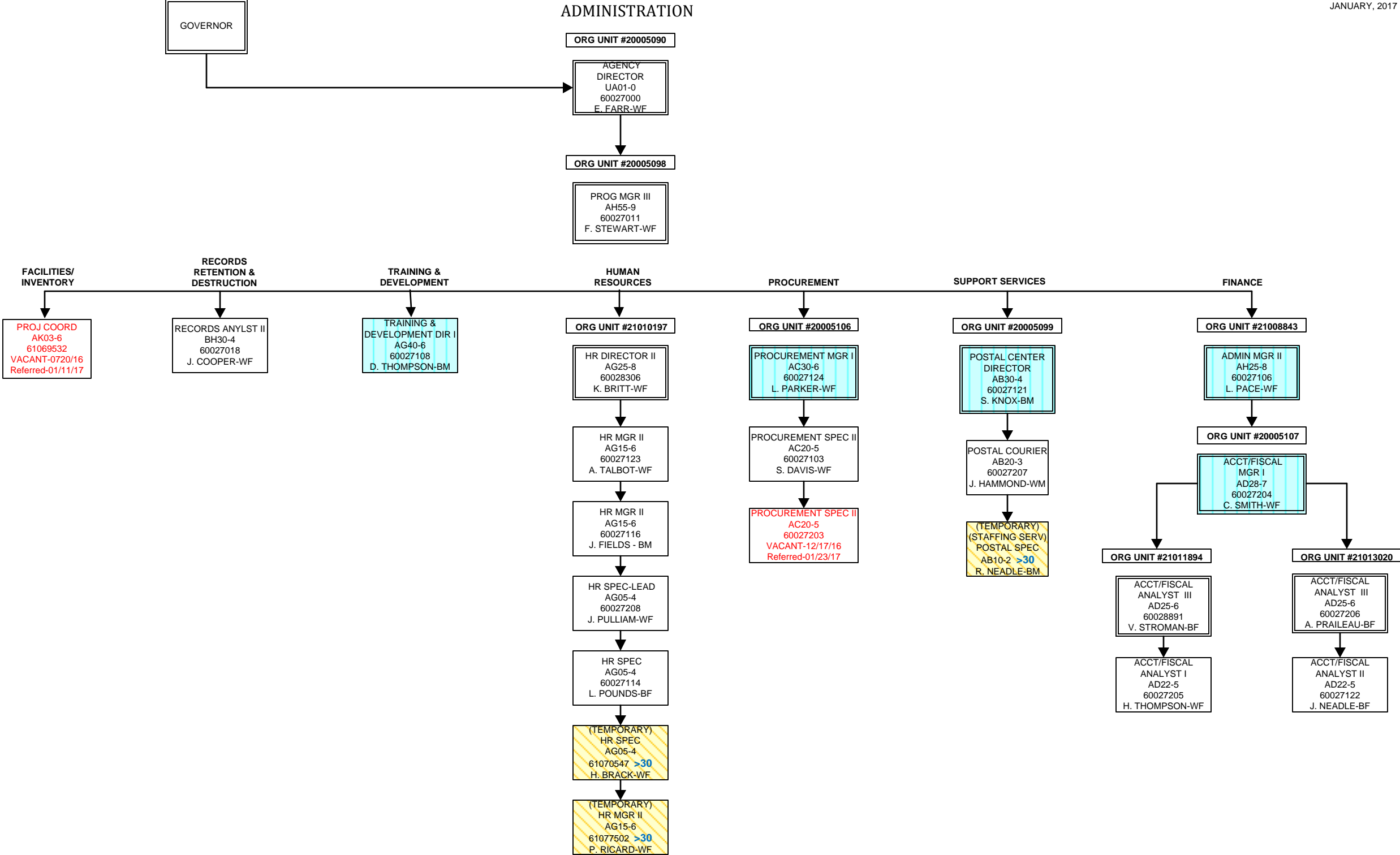
Pink Diamond		TERI Employee
Light Blue Square		Employee returned after TERI or Retirement
Turquoise Vertical Stripe		Employee eligible to retire within 5 years by service or age
White Solid Red Letters		Vacant Position-Vacancy Date
Yellow Diagonal Stripe		Temporary Employee
Dark Pink Outline		Borrowed position

DEPARTMENT OF LABOR, LICENSING AND REGULATION

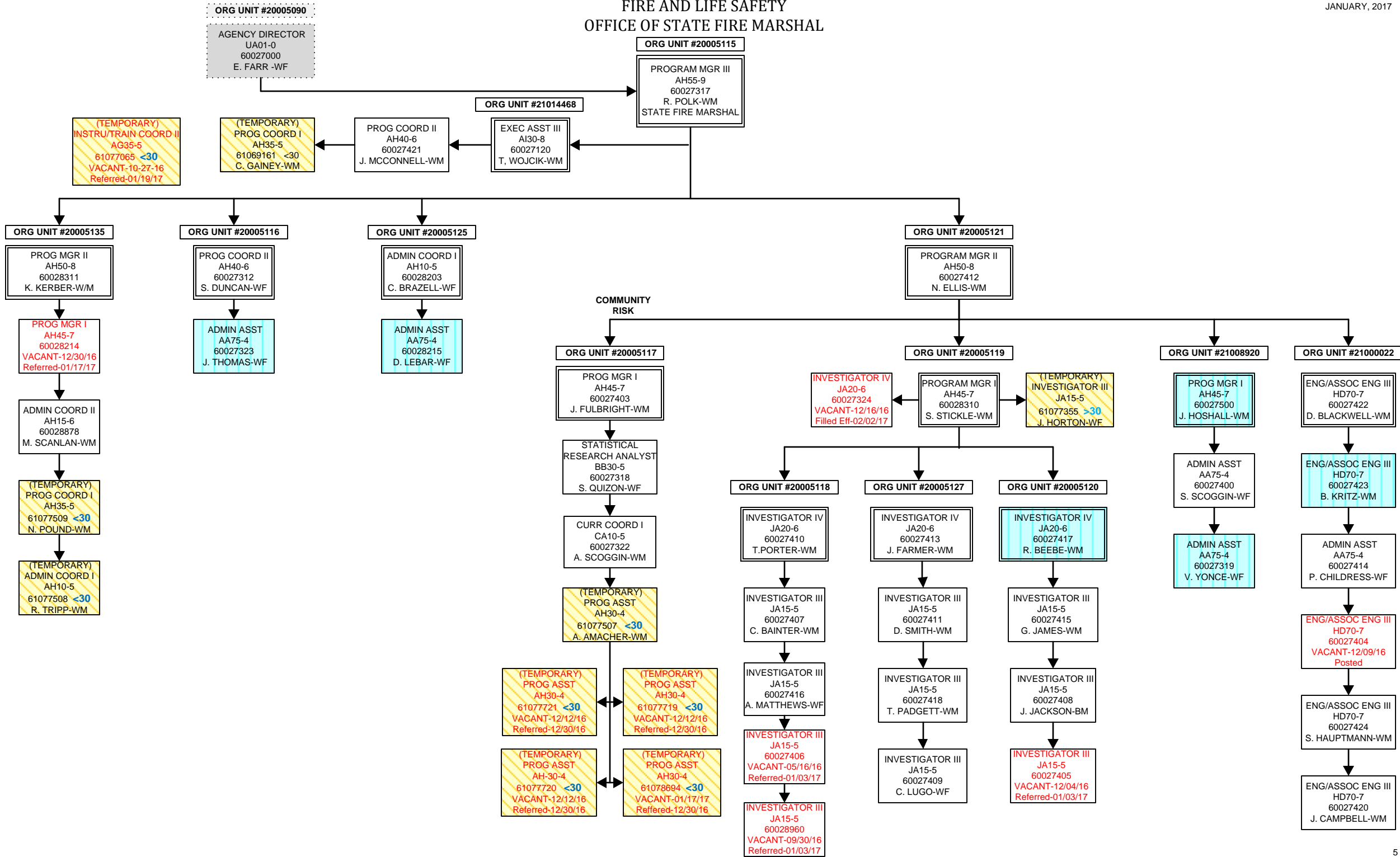
JANUARY, 2017



ADMINISTRATION



FIRE AND LIFE SAFETY
OFFICE OF STATE FIRE MARSHAL



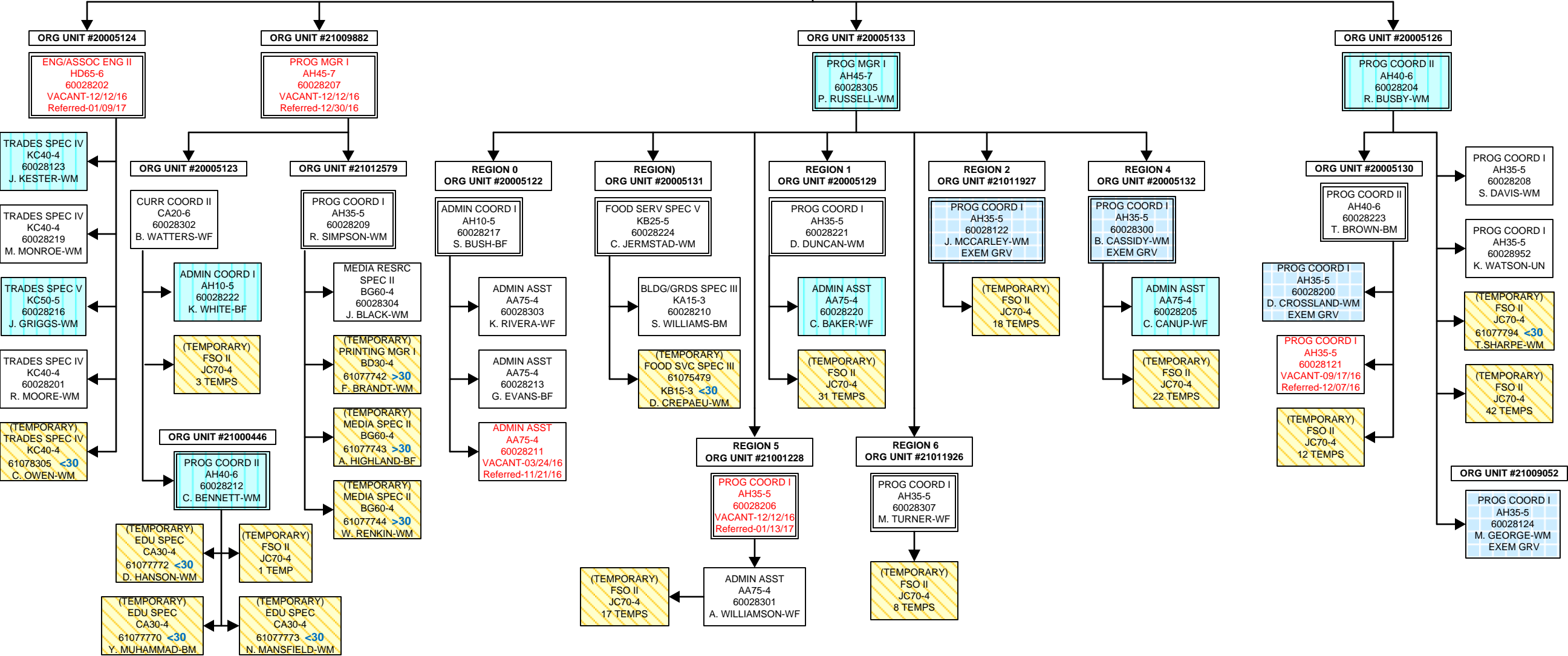
FIRE AND LIFE SAFETY
FIRE ACADEMY

ORG UNIT #20005115

PROGRAM MGR III
AH55-9
60027317
R. POLK-WM
STATE FIRE MARSHAL

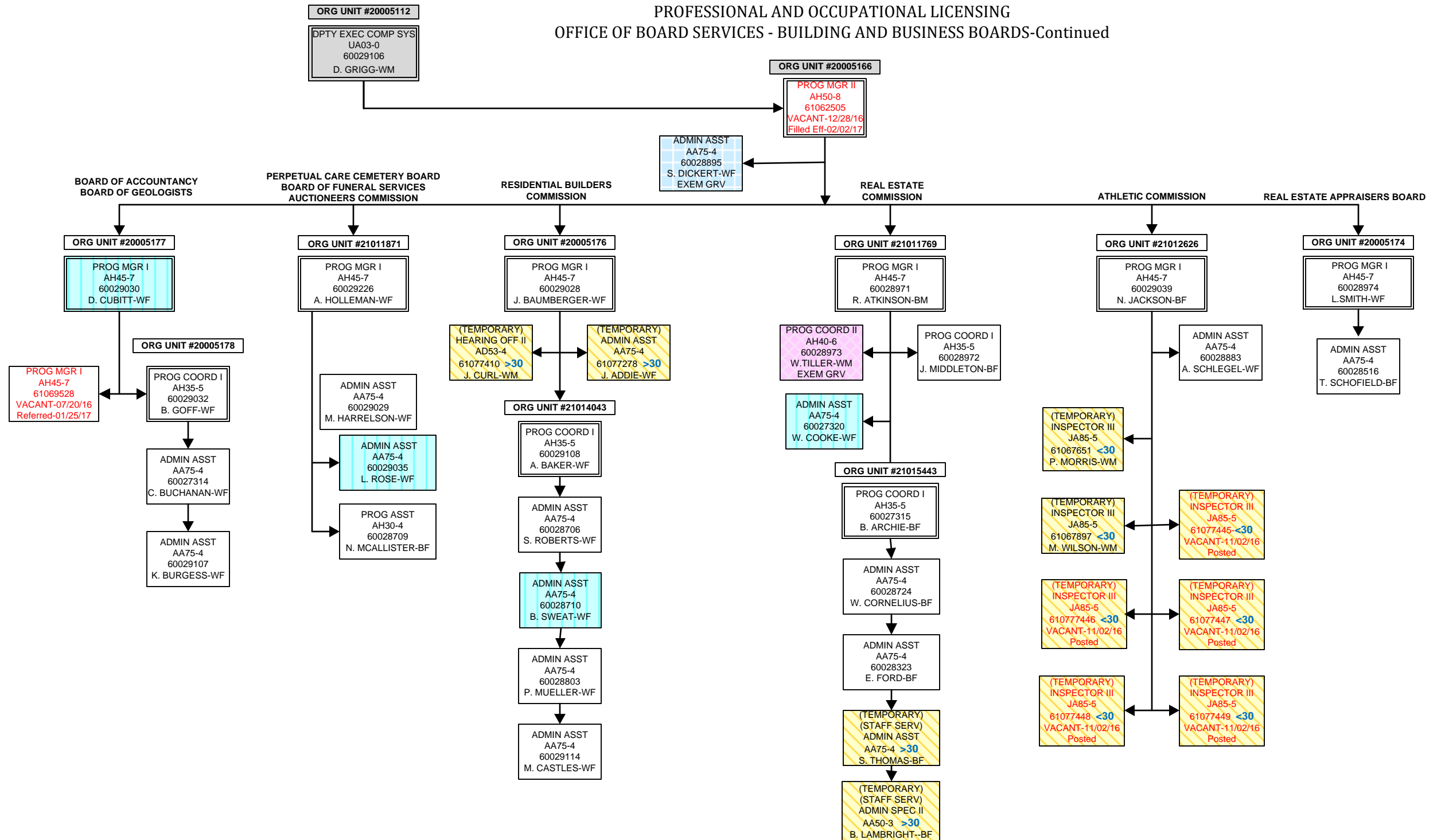
ORG UNIT #20005128

PROG MGR II
AH50-8
60028805
VACANT-7/2/16



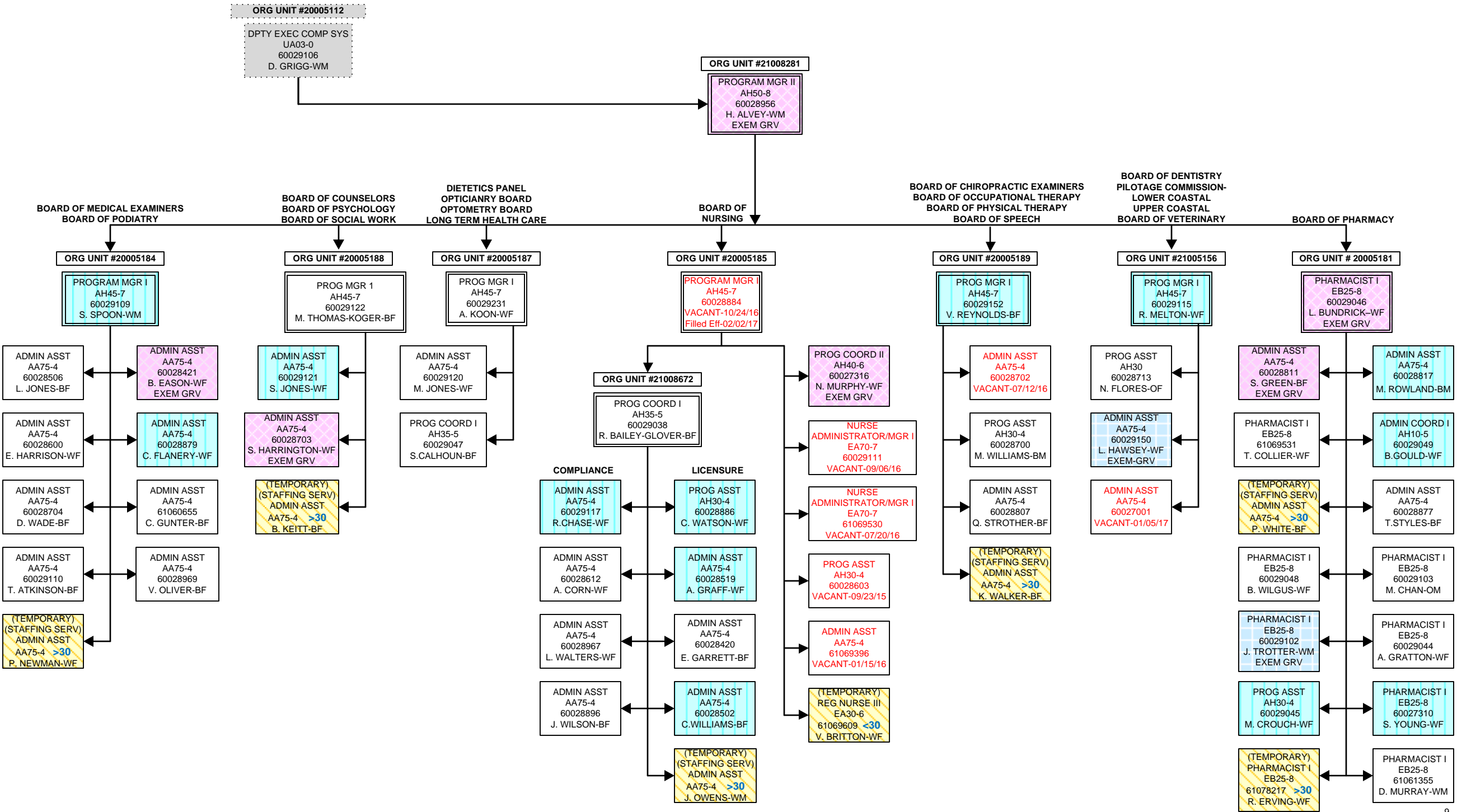


OFFICE OF BOARD SERVICES - BUILDING AND BUSINESS BOARDS-Continued



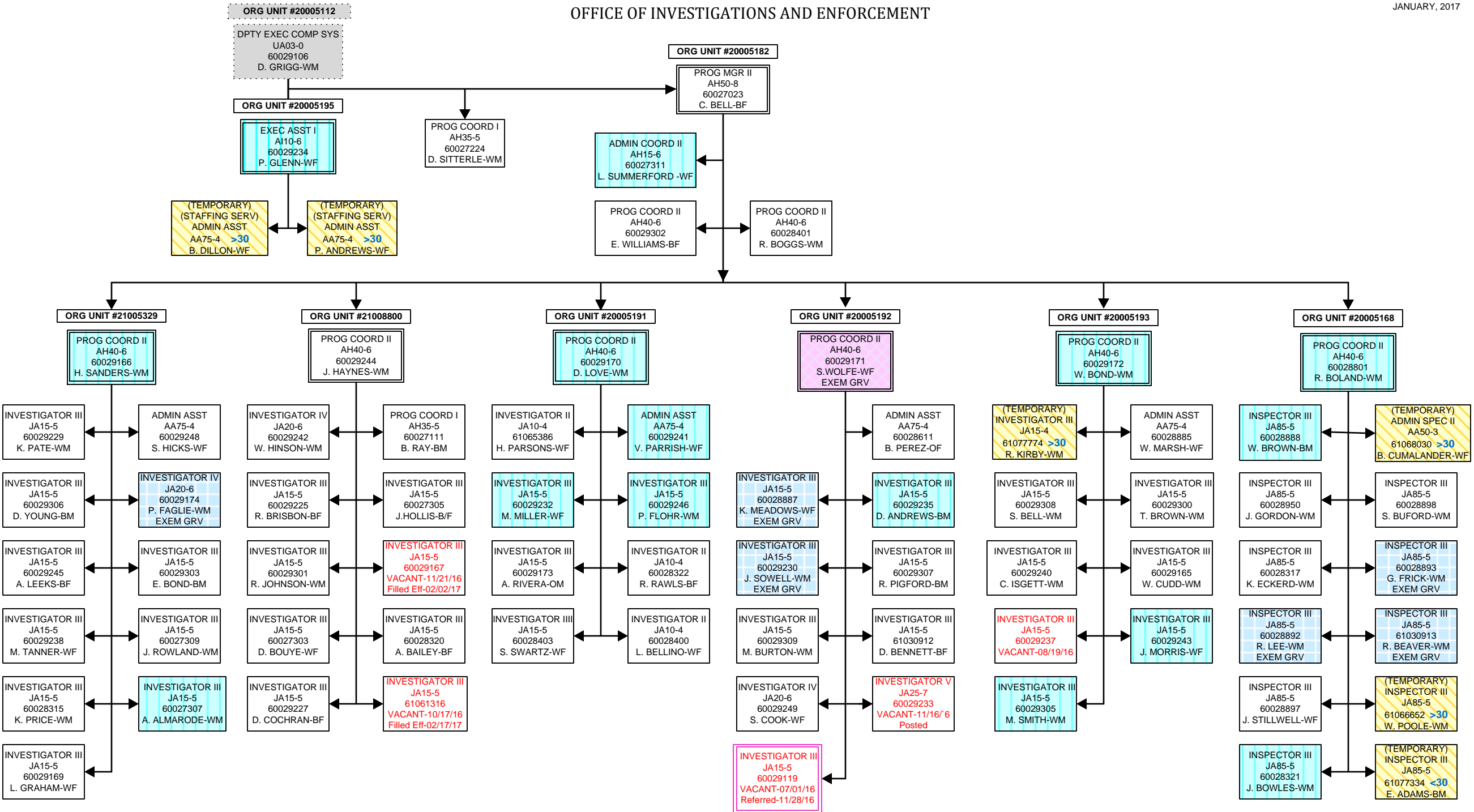
OFFICE OF BOARD SERVICES
HEALTH AND MEDICALLY RELATED BOARDS

JANUARY, 2017



OFFICE OF INVESTIGATIONS AND ENFORCEMENT

JANUARY, 2017



DIVISION OF LABOR

JANUARY, 2017

