

From: Page, Hank <hpage@aging.sc.gov>

To: Barbara.Robinson@catawba-aging.com Barbara.Robinson@catawba-aging.com
kcarter@scacog.org kcarter@scacog.org
kpowell@slcog.org kpowell@slcog.org
kharmon@wrcog.org kharmon@wrcog.org
lbassham@lscog.org lbassham@lscog.org
mfields@lscog.org mfields@lscog.org
mthompson@lowcountrycog.org mthompson@lowcountrycog.org
shelia.welch@caresouth-carolina.com shelia.welch@caresouth-carolina.com
sseago@centralmidlands.org sseago@centralmidlands.org
sblunt@tridentaaa.org sblunt@tridentaaa.org
vwideman@uppersavannah.com vwideman@uppersavannah.com
ann.lewis@caresouth-carolina.com ann.lewis@caresouth-carolina.com
bmauldin@centralmidlands.org bmauldin@centralmidlands.org
cbickley@lowcountrycog.org cbickley@lowcountrycog.org
cshade@lscog.org cshade@lscog.org
mmikota@slcog.org mmikota@slcog.org
pchartung@uppersavannah.com pchartung@uppersavannah.com
ssmith@wrcog.org ssmith@wrcog.org
pelissier@scacog.org pelissier@scacog.org
todd.shifflet@caresouth-carolina.com todd.shifflet@caresouth-carolina.com
beckiegunter@scstatehouse.gov beckiegunter@scstatehouse.gov
mariewaller@scstatehouse.gov mariewaller@scstatehouse.gov
donovanmalloy@scstatehouse.gov donovanmalloy@scstatehouse.gov

CC: Bailey, Jalawndajbailey@aging.sc.gov

Beard, Renerbeard@aging.sc.gov
Roberts, Courtneycroberts@aging.sc.gov
Dickinson, Gerrygdickinson@aging.sc.gov
Ellison, Ruchellerellison@aging.sc.gov
Grant, Pamelagrants@aging.sc.gov
Hightower, Paulahightowr@aging.sc.gov
Hunter, Herberthhunter@aging.sc.gov
Jones, Sherhondajones@aging.sc.gov
Keller, Tammytkeller@aging.sc.gov
Kelly, LaWandrakelly@aging.sc.gov
Kester, Tonykester@aging.sc.gov
Capers, LaChandralcapers@aging.sc.gov
McJunkins, Seansmcjunkins@aging.sc.gov
Merling, Janetjmerling@aging.sc.gov
Newman, Jordanjnewman@aging.sc.gov

Pondy, Kevinpondyk@aging.sc.gov
Rivers, Deniseriversd@aging.sc.gov
Roberts, Johnrobertsj@aging.sc.gov
Eskew, Sandraseskew@aging.sc.gov
Sims, Kevinksims@aging.sc.gov
Turner, Sonyasturner@aging.sc.gov
Stegall, Patrickpstegall@aging.sc.gov
Stroman, Susansstroman@aging.sc.gov
Strong, Crystalcstrong@aging.sc.gov
Theriot, Susanstheriot@aging.sc.gov
Van Cleave, Jenniferjvancleave@aging.sc.gov
Watson, Daledwatson@aging.sc.gov
Wolf, Anneawolf@aging.sc.gov
Wray, Joeyjwray@aging.sc.gov
Shavo, Katherinekshavo@aging.sc.gov
Swygert, Quincyqswygert@aging.sc.gov
Knight, Corinnecknight@aging.sc.gov
Harkins, Mattmharkins@aging.sc.gov
lbassham@lscog.orglbassham@lscog.org
danita.vetter@hotmail.comdanita.vetter@hotmail.com
Gary.Pierce@caresouth-carolina.comGary.Pierce@caresouth-carolina.com
kdickerson@uppersavannah.comkdickerson@uppersavannah.com
laura.ketter@caresouth-carolina.comlaura.ketter@caresouth-carolina.com
mark.smith@caresouth-carolina.commark.smith@caresouth-carolina.com
sbellford@centralmidlands.orgsbellford@centralmidlands.org
slfamily@slcog.orgslfamily@slcog.org
twomack@scacog.orgtwomack@scacog.org

Date: 8/22/2014 8:50:30 AM

Subject: FW: Tropical Update-96L Part Deux

From: Mark Malsick [MalsickM@dnr.sc.gov]
Sent: Friday, August 22, 2014 8:23 AM
To: WEATHERALERT
Subject: Tropical Update-96L Part Deux

Good Morning,

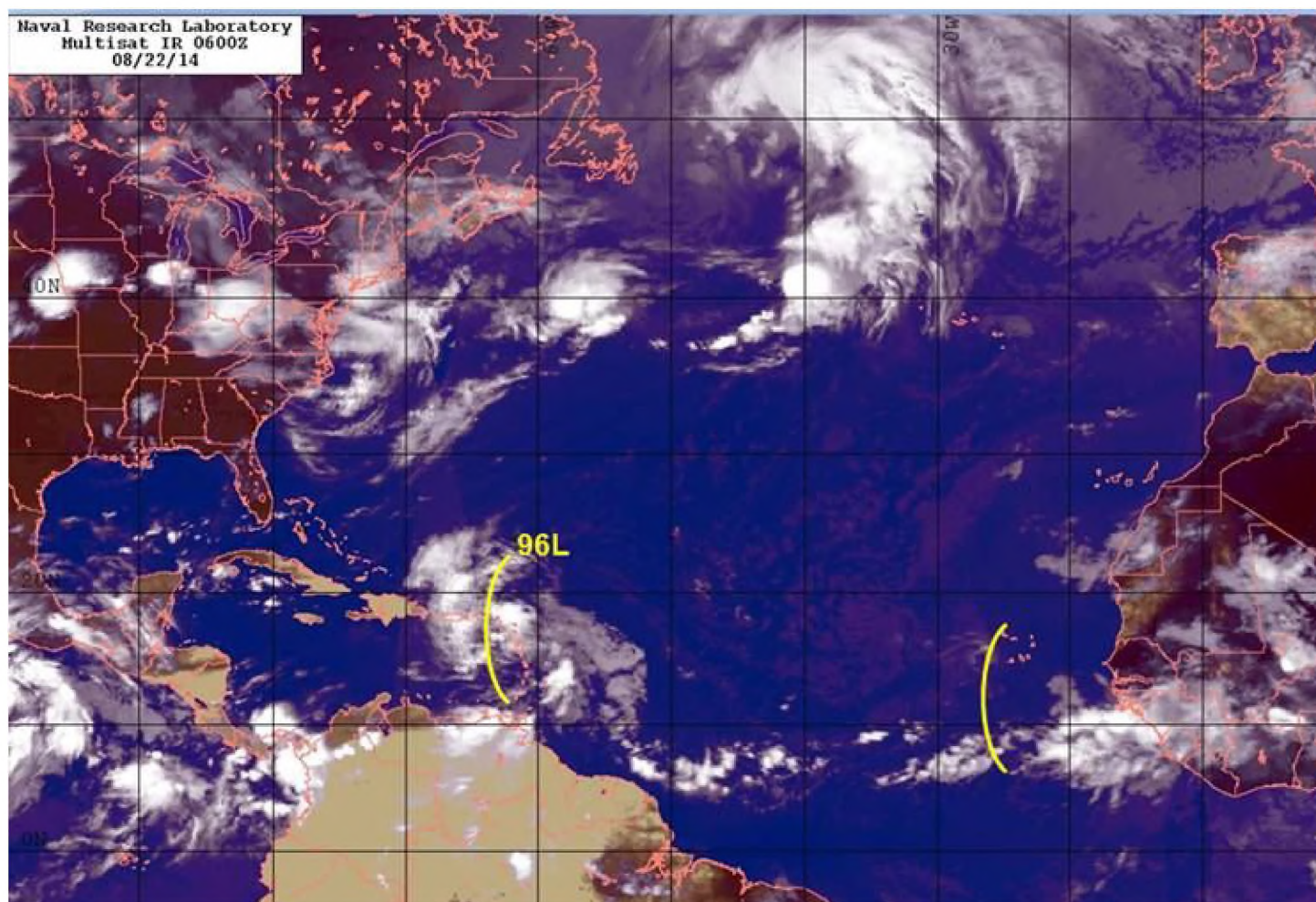
No, not yet. 96L remains a large sprawling, disorganized menagerie of weak convection and puddlemakers for the Virgin Islands and Puerto Rico. 96L is roughly 1500 miles southEAST of Charleston drifting west-northwest at 10-15 mph. Continued interaction with shallow water around the islands and island topography will continue to inhibit intensification until late Sunday when 96L reaches the Bahamas. There, 96L will find reduced shear and warmer waters to do its thermodynamic Carnot engine thing and intensify. After that, there be badgers.

Due to the amorphous blob that is 96L, model guidance is a tad suspect with respect to timing and track of the

strengthened 96L. There has been consistent agreement between the Euro ECMWF and the US GFS and NAVGEM models with a recurving fish storm track well off the US east coast. The ECMWF really ramps up 96L to a major hurricane by next Wednesday; a possibility. France has begun evacuations. Curiously the model that first jumped on the recurving fish storm solution was the Canadian model. This model is now showing a straight running solution that takes a strengthening 96L into the Florida Straights then into a very warm GoMex taking aim at New Orleans as a major hurricane. Badgers at play.

Bottom line, models will continue to have difficulties with 96L's track and intensity forecast this weekend. My hunch is that 96L intensifies late Sunday over the Bahamas and takes a recurving open-ocean fishstorm track.

Latest official discussions and 96L developments for the Prudent mariner can be found here: <http://www.nhc.noaa.gov/>



Mark Malsick

Severe Weather Liaison
South Carolina Department of Natural Resources
State Climate Office
1000 Assembly Street Columbia, SC 29202

803-734-0039

MalsickM@dnr.sc.gov

