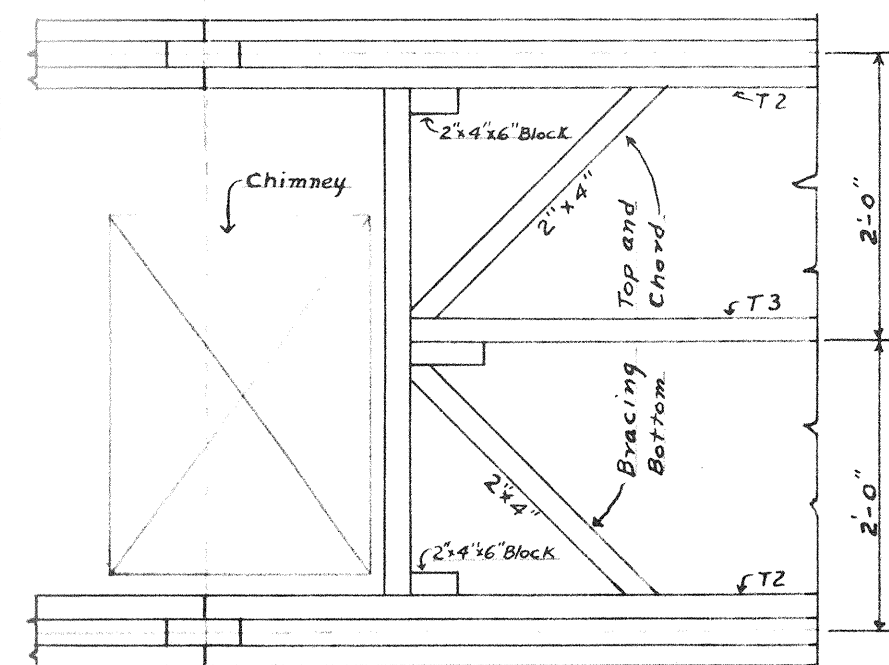
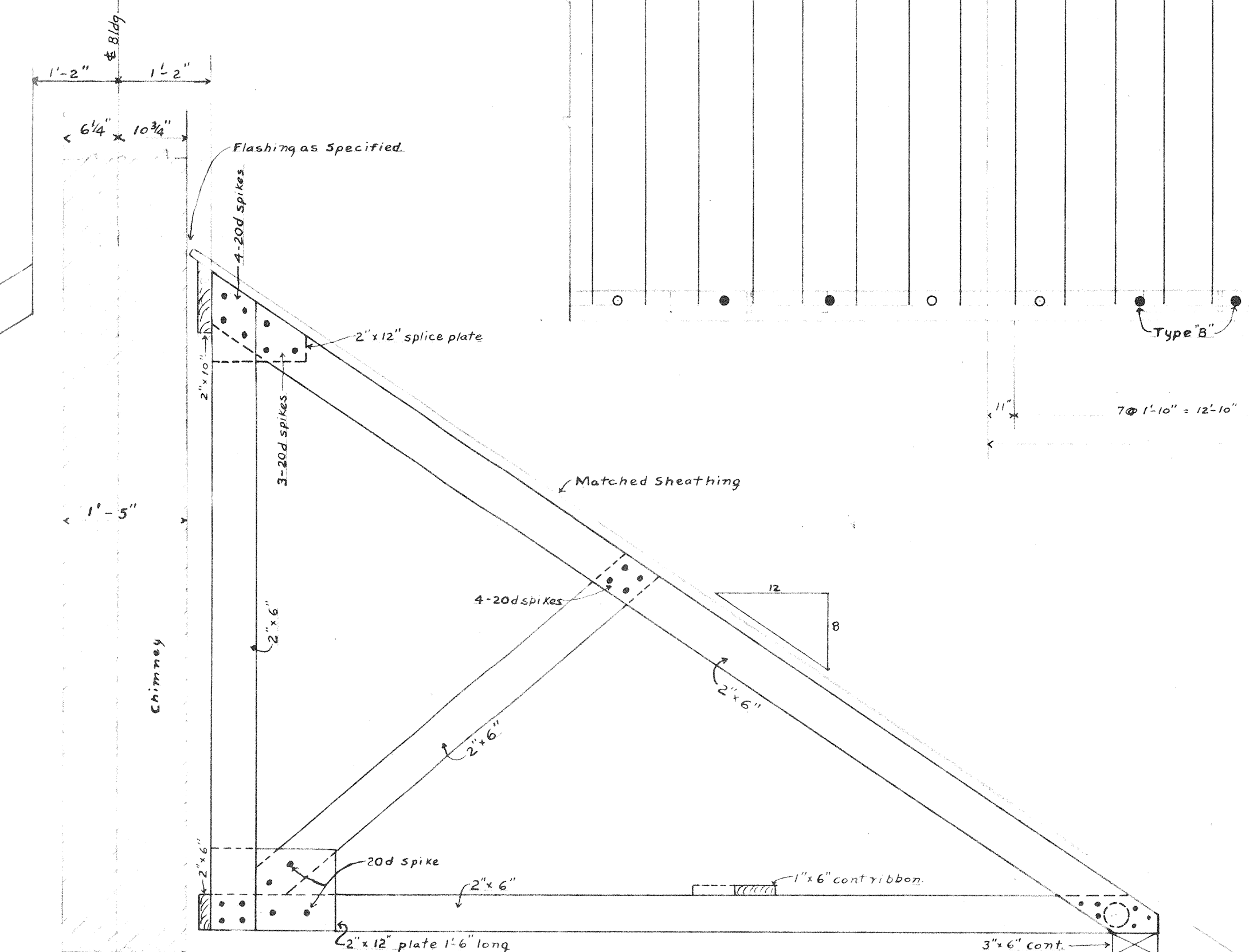


Use 20d spikes for connection of T3 to T2 as required for developing reactions, but not less than 4 at each joint.

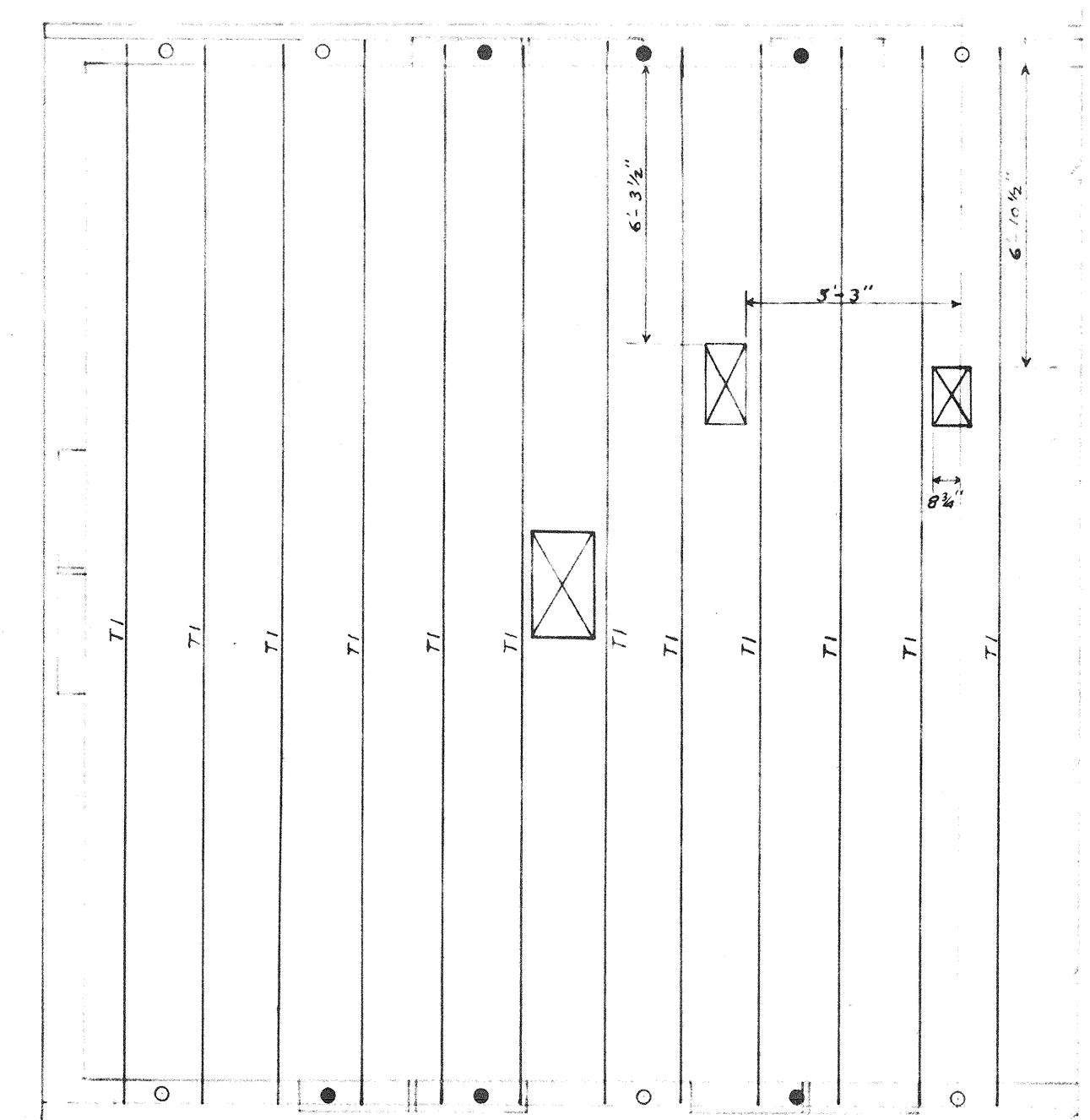
TYPICAL PLAN 4 1/2 ROOM & 4 1/2 ROOM COMBINATION



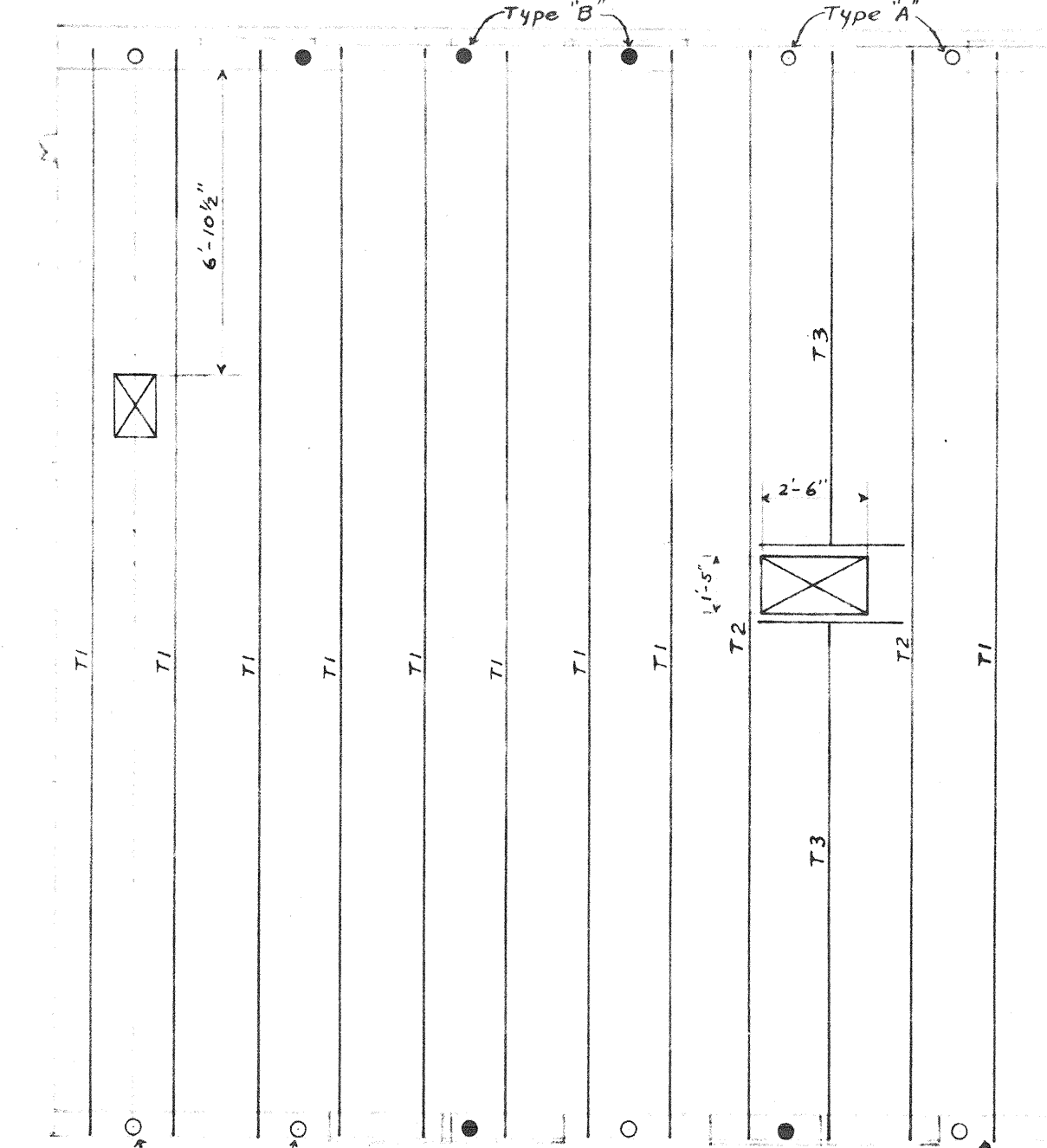
PLAN SHOWING CONNECTION OF TRUSS T3 TO TRUSS T2.
Scale 3/8"=1'-0"



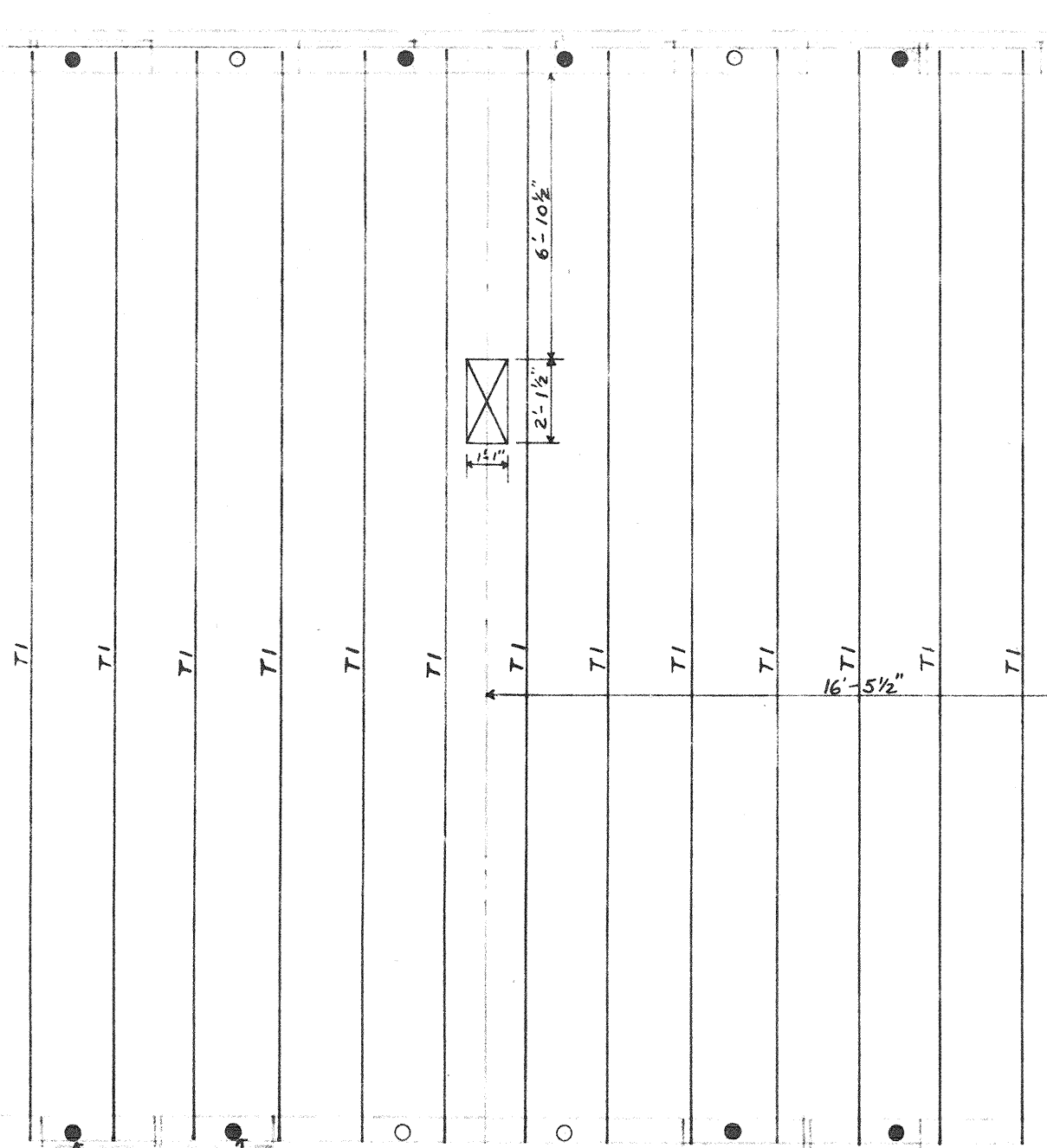
TRUSS T3
SEE DETAIL OF TYPICAL TRUSS T1 & T2 FOR OTHER NOTES.
Scale 3/8"=1'-0"



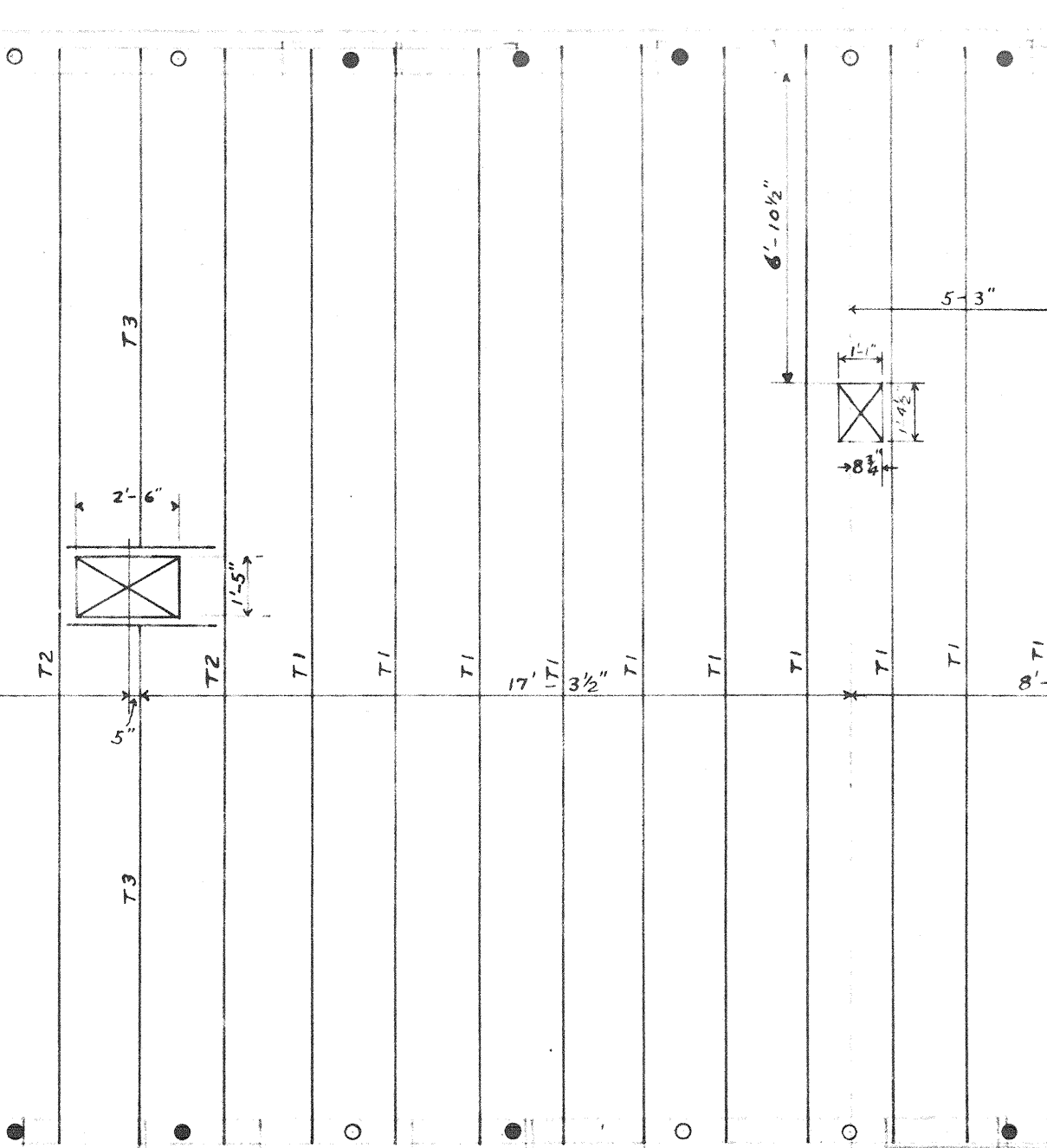
TYPICAL PLAN
3 ROOM END FLATS
LEFT HAND



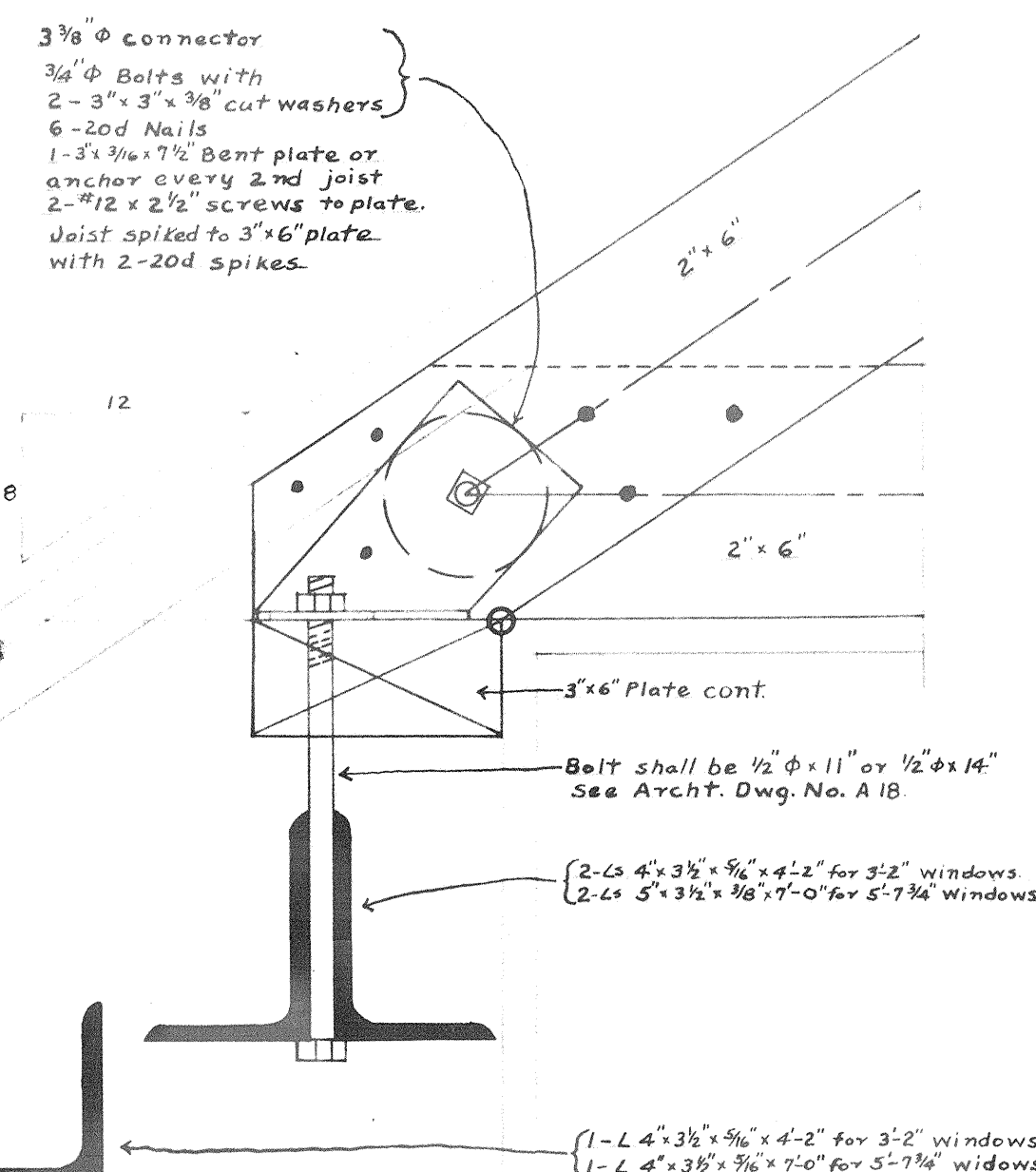
TYPICAL PLAN
4 1/2 ROOM & 5 1/2 ROOM
COMBINATION



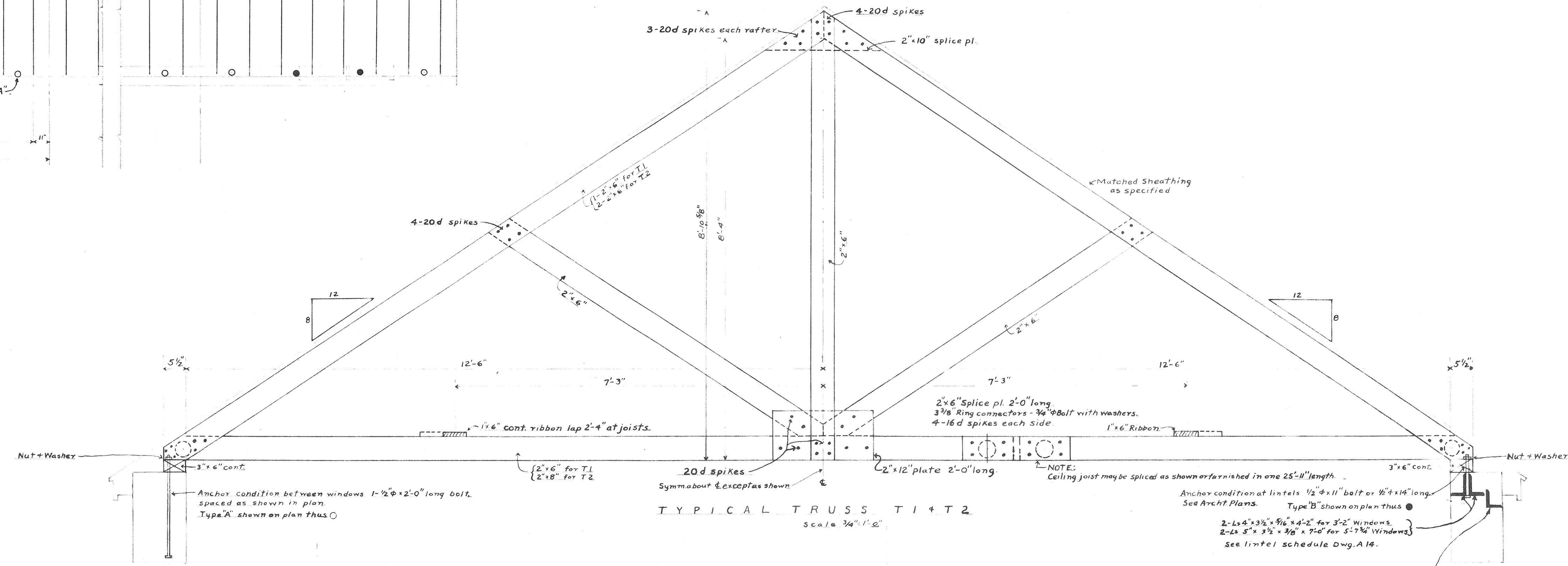
TYPICAL PLAN
4 1/2 ROOM & 5 1/2 ROOM
COMBINATION



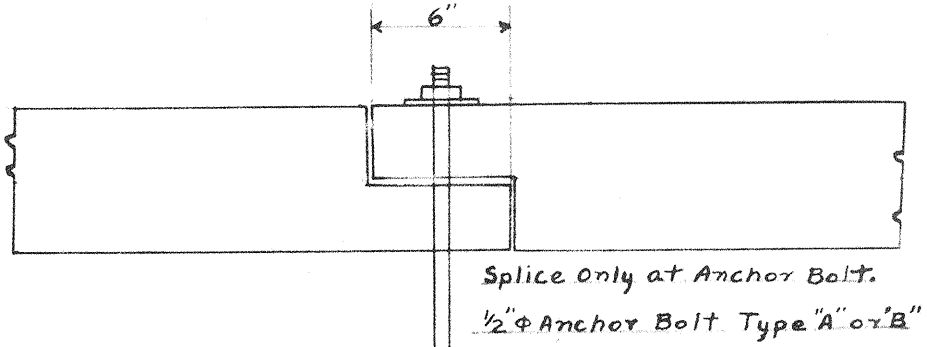
TYPICAL PLAN
3 ROOM END FLATS
RIGHT HAND



TRUSS DETAIL AT EAVE
Also see Archt. Dwg. No. A18
Scale 1/2"=1'-0"

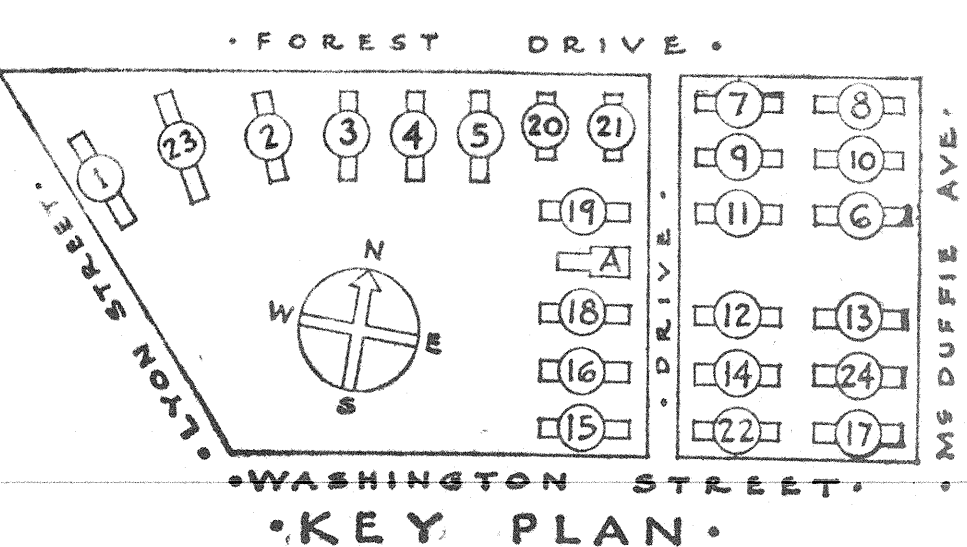


TYPICAL TRUSS T1 & T2
Scale 3/8"=1'-0"



DETAIL OF SPLICE OF 3" x 6" CONT. PLATE
Scale 1/2"=1'-0"

NOTES:
All anchor bolts to be provided with one standard cast washer, or 1-3/4" x 3/4" cut washer.
Spikes in truss are shown for T1, increase number a minimum of 100% for T2 and increase top chord spikes to 50d for T2.
All spikes to be clinched where extending through members.
Ring connectors for trusses to be of footed ribbed steel type and installed as recommended by the manufacturer.



SHEET TITLE		Roof Plans Typical Units	
GONZALES GARDENS LOW RENT HOUSING PROJECT, COLUMBIA, S. C. 21 DEVELOPED BY THE HOUSING AUTHORITY OF THE CITY OF COLUMBIA, S. C. UNDER LOAN CONTRACT WITH UNITED STATES HOUSING AUTHORITY			
CHECKED BY R.C.J.	APPROVED BY UNITED STATES HOUSING AUTHORITY	DATE 9-18-39	SCALE 3/8"=1'-0" AND AS NOTED
REVISIONS:	APPROVED BY THE HOUSING AUTHORITY OF THE CITY OF COLUMBIA, S. C.	DATE 9-18-39	SHEET No. S
JAMES B. LIOUQUART ARCHITECT		DATE 7-13-39	405