



Cultural Resources Project Screening Form

File Number: PIN: Route: County:

Project Name:

Type 1: Resurfacing, installation of fencing, signs, pavement markings, traffic signals, passenger shelters, railroad warning devices, installation of rumble strips, and landscaping

Project Type

Type 2: Bridge replacements on alignment, construction of bicycle/pedestrian facilities, and intersection improvements

Type 3: Projects that do not fall into Type 1 and Type 2 categories (e.g. road widening)

Comments

The project replaces the load restricted bridge carrying S-340 over Mountain Creek in Laurens County. A small amount of new right-of-way (ROW) may be required. The Project Study Area (PSA) was established as a 100 ft wide corridor along the S-340 for a distance of 700 ft on either side of the bridge, widening to 200 ft at the bridge. Within the PSA, the cultural resources (CR) area of potential effect (APE) was set as a corridor 100 ft wide, 200 ft at the bridge, and extending 250 feet east and 400 ft west from either side of the bridge. The architectural APE was a 300 ft buffer around the archaeological APE. Background review indicated a previously recorded cultural resource, a historic bridge (Asset # 2388), was present within the APE. The resource was previously determined not NRHP eligible. A CR survey was conducted on May 9, 2019 and consisted of a pedestrian reconnaissance of the APE augmented by shovel test pits (STPs) at 30 meter intervals. Ten STPs were excavated. Four potential STP locations were examined but not excavated due to exposed surface or wetlands. All STPs were negative. One historic resource (2412), a mid-century residence, was recorded. This resource is recommended not NRHP eligible. No additional CR investigations are recommended.

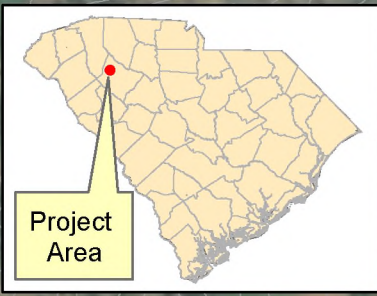
Effect Determination:

*SHPO consultation is required for all Type 3 projects and any project with a No Adverse or Adverse Effect Determination.

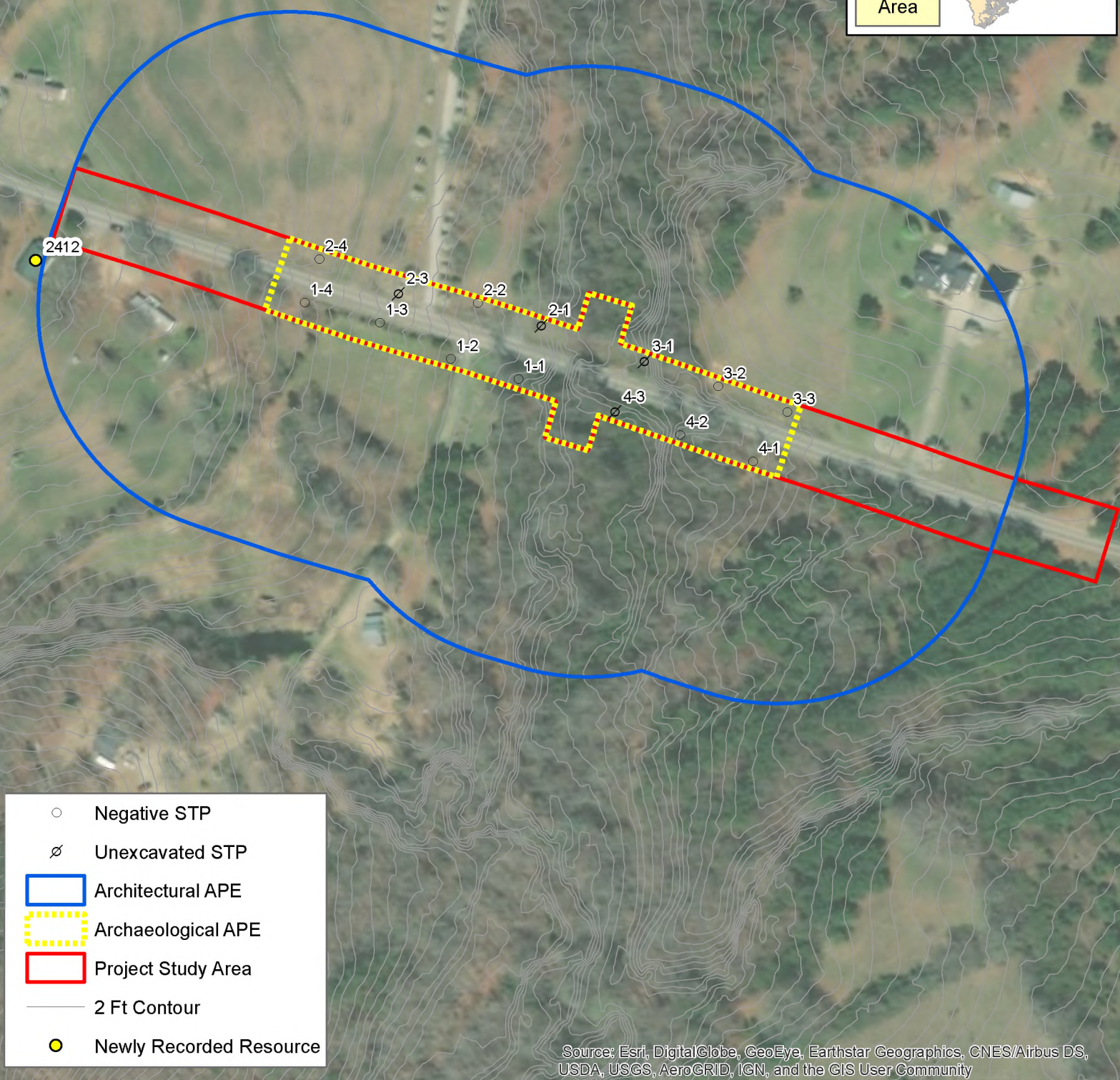
This screening form was developed to satisfy documentation requirements for Type I and Type II projects under a Programmatic Agreement between the Federal Highway Administration, the South Carolina State Historic Preservation Office, the US Army Corps of Engineers, and the South Carolina Department of Transportation. For Type I and Type II projects that have no effect on historic properties, the completion of this screening form with supporting documentation (e.g. ArchSite Map) provides evidence of FHWA and SCDOT's compliance with Section 106 of the National Historic Preservation Act.

Prepared by:

Review Date:



Project Area



- Negative STP
- ∅ Unexcavated STP
- ▭ Architectural APE
- ▭ Archaeological APE
- ▭ Project Study Area
- 2 Ft Contour
- Newly Recorded Resource

Source: Esri, DigitalGlobe, GeoEye, Earthstar Geographics, CNES/Airbus DS, USDA, USGS, AeroGRID, IGN, and the GIS User Community

Date:
May 13, 2019

Laurens County
Load Restricted Bridges

S-340 over
Mountain Creek



Project ID: P038302

