



Infrastructure Recovery Daily Report

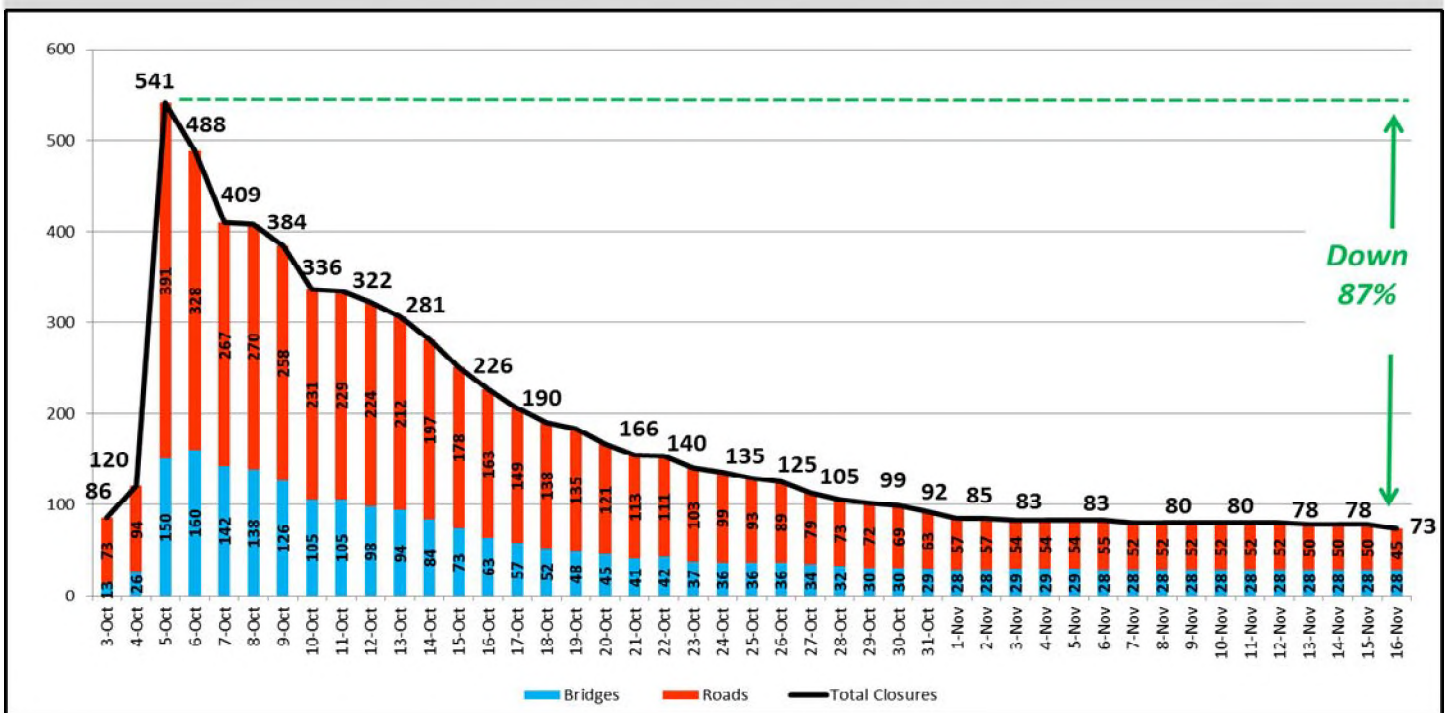
Monday, November 16, 2015

Resources Deployed

SCDOT Maintenance forces have led the majority of the repairs, including initiating 3 bridge replacement projects with in-house forces.

Road and Bridge Contractors will be engaged as needed. Currently, 24 Highway/Bridge Contractors have been engaged to assist with 69 different "emergency/spot repairs" in 16 counties. Contractors have also been engaged on 10 bridge replacement or major bridge/culvert repair projects in 4 counties. 22 of the firms are SC firms, 1 GA firm, 1 NC firm, and 4 of the firms are DBEs.

Closures on the State-Maintained System



8 Primary Routes remain CLOSED statewide: Richland: US 21, SC 48 & SC 769. Clarendon: US 15, US 301 & US 521 (partial). Newberry: US 176. Williamsburg: SC 512.

13 of the remaining 73 closures are expected to be re-opened by Thanksgiving.

At least 16 of the remaining 28 bridge closures will require bridge replacements, major bridge repairs or major culvert replacements. Please see the Road Closure Report for a detailed listing,

26 routes have undetermined reopening dates due to dam failures. Please see the Road Closure Report for a detailed listing,



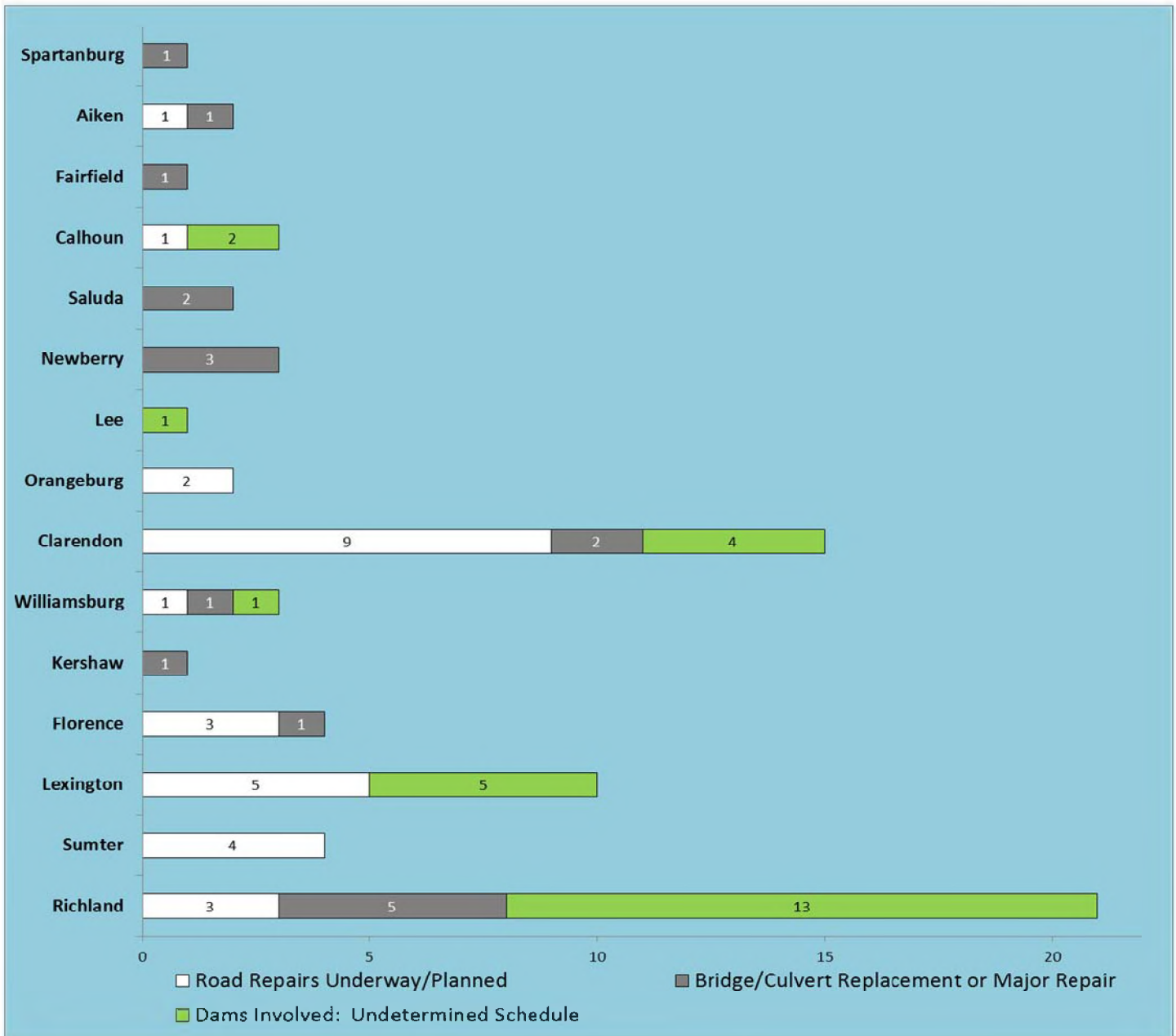
Infrastructure Recovery Daily Report

Monday, November 16, 2015

All repairs to the state-maintained system have been completed in 15 Counties to date:

Abbeville County, Allendale County, Anderson County, Bamberg County, Berkeley County, Charleston County, Colleton County, Darlington County, Dorchester County, Georgetown County, Greenwood County, Horry County, Laurens County, Marion County, and McCormick County.

County by County Work Plan for the State-Maintained System



Debris Removal Operations

Collected to Date: 1,784 loads (86,078 CY)

Please visit us at www.scdot.org for updated information. Updates are also provided on Facebook & Twitter.