

TIME RECEIVED
November 30, 2015 11:38:35 AM ESTREMOTE CSID
8038283435DURATION
405PAGES
16STATUS
Received

Nov.30.2015 12:30 AM VILAGEVAPING

8038283435

PAGE. 1/ 16

Governor Nikki Haley
(803) 734-5167

(Pages
16)

Ricky Loftis
Hemp for Mother Earth

(803) 716-7315

Ricky L. Loftin
4520 Monticello Rd. 2C
Columbia, S.C. 29203

11/30/15

Mrs. Nikki R. Haley
Governor of South Carolina
1205 Pendleton St.
Columbia, S.C. 29201

Dear Governor Haley,

I would like to bring to your attention the virtues of leading the way for small business and job growth with HEMP for our Citizens? HEMP FOR MOTHER EARTH....COMMON SENSE, INSIGHT, IMAGINATION, INGENUITY, INNOVATION & INTEGRITY! I have proven my case Governor; You have refused to face Environmental Green Industrial Revolution that benefits all inhabitants of our STATE! Tennessee legalized Hemp last January and let Canada supply the seeds to Farmers and IF farmers could not sell on open market; bought their crop? Governor Haley let's SLED Chief Keel bring 42 armed on duty Police Officers to Senate hearing to intimidate legal law passed by Senate and House? No Police agency in South Carolina will meet and discuss positive FACTS on HEMP or Medical Marijuana. I have contacted them all? You have paperwork!

Governor Haley, You are keeping South Carolina Citizens as a Service Industry for Foreign Corporations instead of letting us explore the 50,000 legal uses with the Hemp plant? I purpose fixing our Roads with hemp asphalt and concrete just like the Romans did long years ago which are still in use today! New IDEAS that reflect on using South Carolina agriculture to manufacturing?

You refused to back my first Hemp Plastic Factory in Hampton County to employee 1000 people that would supply 17 car manufacturers in 600 mile radius. You let German corporation come in to Anderson, S.C. and put hemp plastic for auto makers without considering our Citizens? You let two Chinese Companies come into Indian Land (hemp clothe) and Travelers Rest (hemp carpet) for auto industry? IDEAS are FACTS now and you still refuse to listen?

Invest in South Carolina Citizens growing and manufacturing new Carbon Footprint, poison and chemical free products that does not pollute Mother Earth!

Hemp concrete and asphalt to fix our roads and bridges for 100's of years.....Less expensive!

Hemp Plywood.....Three factories closed in Salters, Manning and Winnsboro.

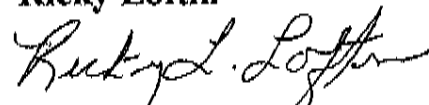
Hemp Milk.....First Hemp Milk factory in South Carolina that improves our children, military and elderly health without growth hormones and poisons. Factory sitting empty in Estill???

Hemp Bio Fuel for cleaner atmosphere and safety of our Children. No more fumes to make them sick? Trees are not working in Summerville.....henryford1941hempcar.com

Sonoco reduces pollution by 50% while making hemp cardboard and plastic that are biodegradable?

Gerri and the rest of your staff refuse to answer my letter(s) or talk to me in person when I request an interview. No phone calls are returned. WHY? Waiting on your answers since 2010? I have been proven RIGHT by actions from other STATES. Will you listen now?

Ricky Loftin



Molly Spearman will not answer?

No Officers will answer.....Police Officers are the TERRORIST for not sitting with Citizens to discuss the potential of this Billion Dollar Crop that support Environmental Green Industrial Revolution. Police are disrupting legal laws passed by Senate and House . WHY!

Are you listening NOW?????

(803) 716-7315

hemppformotherearth@yahoo.com

Facebook too....

HEMP SEED: THE MOST NUTRITIONALLY COMPLETE FOOD SOURCE IN THE WORLD

Seeds of the plant *cannabis sativa*, hemp seed, contain all the essential amino acids and essential fatty acids necessary to maintain healthy human life. No other single plant source has the essential amino acids in such an easily digestible form, nor has the essential fatty acids in as perfect a ratio to meet human nutritional needs.

The importance of hemp seed nutrients to human health cannot be fully appreciated without some understanding of bio-chemistry in life. Unfortunately, any attempt to understand the flow of life leads into the realm of the most troublesome of the three infinities -- the infinitely complex.

Some deep thinkers believe life is a paradox not to be understood but experienced to the fullest. However, the Sages have said, "Know thyself." At any rate it is paradoxical to attempt simplifying the infinite complexity of flowing life. Yet, it is far better for the health and development of any thinking and feeling, uniquely individual human being, to pursue knowledge than to lounge in ignorance.

One out of two Americans will die from the effects of cardiovascular disease (CVD). One out of four

Americans will die from cancer. Researchers believe cancers erupt when immune system response is weakened. Pioneers in the fields of biochemistry and human nutrition now believe CVD and most cancers are really diseases of fatty degeneration caused by the continued over-consumption of saturated fats and refined vegetable oils that turn essential fatty acids into carcinogenic killers. And if this is not scary enough, more Americans are succumbing to immune deficiency diseases than ever before. Sadly it is ignorance of human nutritional needs that will cause this overwhelming majority of Americans to die slowly from these afflictions -- the greatest killers in affluent nations.

HEMP SEED PROTEINS AND THE BUILDING BLOCKS OF LIFE AND IMMUNITY

There are eight amino acids the human body cannot make and two more the body cannot make in sufficient quantity, so they are essential to life. A diet without any one of them will eventually cause disease and death. These essential amino acids, along with eleven others the body can make from them, are chained together in accordance to genetic guidelines, via RNA formats from DNA blueprints, into structural proteins that give body to life, and into enzymes (globular proteins) that carry out the mechanics of living.

Nearly three quarters of body solids are proteins. The body is literally constructed and maintained by an infinitely complex system that simply builds proteins from amino acid sub units. Every amino acid consists of an amine and a carboxyl bound to the same carbon atom. All but the smallest amino acid have one, more or less complex, carbon containing side chain connected to the carbon atom shared by the amine and carboxyl groups.. The amine group, NH_2 , is slightly basic; the carboxyl group, COOH , is a mild acid. The amine group of one amino acid unites with the carboxyl group of another forming a peptide link. Proteins are made of amino acid peptide chains in specific sequences. The number of possible amino acid peptide combinations is infinite.

Peptide chains can bend, twist and unite with other peptide chains by forming weak hydrogen bonds between nitrogen and oxygen atoms along the chain. Amino acids can also form bonds through side chain linkages. All three types of amino acid bonding methods contribute to the infinite possibility of protein shapes and reactivity potentials. Though each species builds proteins unique to itself, life can tailor new ones if challenged by the pressures of existence.

Hemp is not unique in having all the essential amino acids in its embryonic seed. Flax seeds also contain all

the essential amino acids as do many other seeds in the plant kingdom. What is unique about hemp seed protein is that 65% of it is globulin edistin. That is the highest in the plant kingdom.

Globulins are one of seven classes of simple proteins. Simple proteins are constructed from amino acids and contain no non-protein substances. Globulins are in seeds and animal blood. Edistins are found in seeds; serum globulin is in blood. Edistins are plant globulins. And globulins along with albumins are classified as globular proteins. All enzymes, antibodies, many hormones, hemoglobin and fibrogin (the body converts fibrogin into non-soluble, fibrin, a blood clotting agent) are globular proteins. They carry out the main work of living.

Albumin, globulin and fibrogin are the three major types of plasma proteins. Plasma is the fluid portion of blood that supplies nutrients to tissues. And the three protein types: serum albumin, serum globulin and fibrogin, compose about 80% of plasma solids. These plasma proteins serve as a reservoir of rapidly available amino acids should any body tissues be in need.

Plant seeds contain albumin and globulin but no fibrogin. Albumin is the nutritive material that fills the space in the seed between the embryo and the seed

coat. The embryo needs albumin to fuel its initial growth until photosynthesis begins. Globulin edistins within the embryo guarantee this new life has the enzymes necessary for metabolic activity.

Globulin is the third most abundant protein in the human body. Globulins perform many enzymatic (causing reactions to take place) functions within the plasma itself. More importantly, they are responsible for both the natural and acquired immunity a person has against invading organisms. The body uses globulin proteins to make antibodies which attack infecting agents (antigens) that invade the body. Globulins like gamma globulin are absolutely essential to maintain a healthy immune system. They neutralize alien microorganisms and toxins.

Globulins are divided into three classes: alpha, beta and gamma globulins. Alpha and beta globulins operate as transport vehicles by combining with other substances and carry protein from one part of the body to another. They haul the materials needed to build new and replace worn or damaged bodily structures. Gamma globulins are divided into five classes of antibodies called immunoglobulins. All are formed to combat specific cell invading antigens. They comprise the body's first line of defense against disease and infection. Immunoglobulins are produced by B lymphocyte (white blood cells) plasma cell clones

located in lymph system nodes. Infecting antigens normally must pass through the lymph system before entering the blood stream.

Regarding human protein requirement: "Qualitively, it is considered desirable to secure amino acids similar to those of human tissues, both as to kinds and relative quantities of the various kinds." [Textbook of Anatomy and Physiology, Kimber, Gray, Stackpole, 1943]

During digestion proteins in food are broken down into amino acids. The amino acids are then taken into the body and reassembled into human proteins according to need and the availability of the amino acids necessary to make specific proteins.

The body needs the necessary kinds of amino acids in sufficient quantity in order to make proteins such as the globulins. Proper quantities of the right kinds may not be available to the body much of the time. So even though the body has enough essential amino acids available to prevent deficiency diseases, it may not have enough to build quantities of immunoglobulins necessary for the immune system to repel infection.

The best way to insure the body has enough amino acid material to make the globulins is to eat foods

high in globulin proteins. Since hemp seed protein is 65% globulin edistin, and also includes quantities of albumin, its protein is readily available in a form quite similar to that found in blood plasma. Eating hemp seeds gives the body all the essential amino acids required to maintain health, and provides the necessary kinds and amounts of amino acids the body needs to make human serum albumin and serum globulins like the immune enhancing gamma globulins. Eating hemp seeds could aid, if not heal, people suffering from immune deficiency diseases. This conclusion is supported by the fact that hemp seed was used to treat nutritional deficiencies brought on by tuberculosis, a severe nutrition blocking disease that causes the body to waste away. [Czechoslovakia Tubercular Nutritional Study, 1955]

ANTIBODIES

Antibodies are globulin proteins programmed to destroy antigens (any substance eliciting a response from lymphocytes: bacteria, viruses, toxins, living and dead tissue, internal debris, etc.). Circulating in blood plasma like mines floating in a harbor antibodies await contact with the enemy, then initiate a cascade of corrosive enzymes that bore holes in the antigen surface causing it to break apart.

Antibodies are custom designed to neutralize or disintegrate one specific type of antigen. White blood cells called B cell lymphocytes seek out and lock-on to antigenic proteins or sugars on the invader's surface. The B cell then uses that lock and key pattern to make antibodies tailored to that antigen only. It also will make clones of itself called plasma cells. Most of the clones begin producing antibodies for that antigen. Others become memory cells which may spend years wandering through the blood stream looking for that specific antigen. If the body is exposed to it again the memory cells lock-on to one and begin producing plasma cell clones and a flood of antibodies that wipe out the invader. One lymphocyte can divide into hundreds of plasma cells in a few days. A mature plasma cell can make about 2000 antibodies every second for the few days it lives. This is how the body acquires immunity.

The body's ability to resist and recover from illness depends upon how rapidly it can produce massive amounts of antibodies to fend off the initial attack. If the globulin protein starting material is in short supply the army of antibodies may be too small to prevent the symptoms of sickness from setting in.

Hemp seed is the premier plant-seed provider of globulin starting material -- the highest in the plant kingdom. Eating hemp seeds will insure the immune system has the reservoir of immunoglobulin resources needed to make disease destroying antibodies.

FROM PAGE ONE NATION

WWW.THESTATE.COM • THE STATE, COLU

Coke bets on 'premium milk' to boost declining beverage category

By CANDICE CHOI
The Associated Press

NEW YORK — Coke is coming out with premium milk that has more protein and less sugar than regular. And it's betting people will pay twice as much for it.

The national rollout of Fairlife over the next several weeks marks Coca-Cola's entry into the milk case in the U.S. and is one way the world's biggest beverage maker is diversifying its offerings as Americans continue turning away from soft drinks.

It also comes as people increasingly seek out some type of functional boost from their foods and drinks, whether it's more fiber, antioxidants or protein. That has left the door open for Coke to step into the milk category, where the differences between options remain relatively minimal and consumption has been declining for decades.

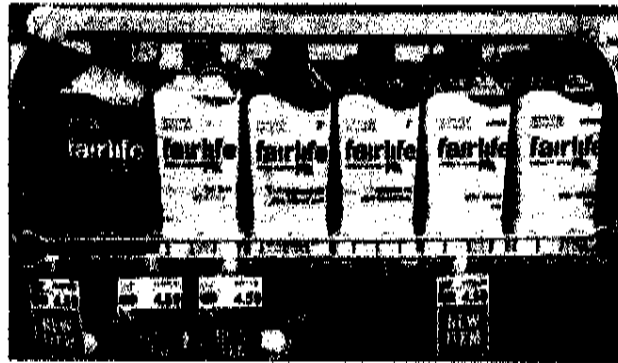
"It's basically the premi-

umization of milk," Sandy Douglas, president of Coca-Cola North America, said at an analyst conference in November. If developed properly, Douglas said it is the type of product that "rains money."

Fairlife, which Coca-Cola formed in partnership with dairy cooperative Select Milk Producers in 2012, says its milk goes through a filtration process that's akin to the way skim milk is made. Filters are used to separate the various components in milk. Then, more of the favorable components are added, while the less desirable ones are kept out.

The result is a drink that Fairlife says is lactose free and has 50 percent more protein, 30 percent more calcium and 50 percent less sugar than regular milk.

The same process is used to make Fairlife's Core Power, a drink marketed to athletes that has even more protein and cal-



Fairlife milk products appear on display in the dairy section of an Indianapolis grocery store.

MICHAEL CONROY/THE ASSOCIATED PRESS

cium than Fairlife milk.

Sue McCloskey, who developed the system used to make Fairlife with her husband Mike McCloskey, said Fairlife will be marketed more broadly to women who are the "gatekeepers" for their families' nutritional needs.

Even while touting its nutritional advantages, however, Fairlife will need to be careful about communicating how its drink is made. Jonas Feliciano, senior beverage analyst for market researcher Euromonitor, noted people want drinks that "do something for me," but that Fairlife's juiced-up nutritional stats might make people hesitant about how natural it is.

"They have to explain that this is not an abomination of

nature," Feliciano said.

Major retailers including Wal-Mart, Target, Kroger and Safeway have agreed to carry it, and Coca-Cola's Minute Maid team plans to make it available wherever milk is sold.

The drink, which comes in a sleek plastic bottle reminiscent of milk cartons, has already started appearing on shelves and is expected to continue rolling out nationally over the next several weeks.

At a supermarket in Indianapolis, a 52-ounce bottle of Fairlife was being sold for \$4.59. By comparison, the national average cost for a half-gallon of milk, which is 64 ounces, is \$2.18, according to the USDA. For organic milk, the average is \$3.99.

Hemp Milk is just like
Mother's Milk. Restores
DNA?

Remediation of benzo[a]pyrene and chrysene-contaminated soil with industrial hemp (*Cannabis sativa*).

Campbell S¹, Paquin D, Awaya JD, Li QX.

Author information

- ¹Department of Molecular Biosciences and Bioengineering University of Hawaii, 1955 East-West Road, Honolulu, HI 96822, USA.

Abstract

The phytoremediation, with industrial hemp (*Cannabis sativa*), of a Hawaiian silty clay soil contaminated with two polycyclic aromatic hydrocarbons (PAHs), chrysene and benzo[a]pyrene, was studied. Hemp showed a very high tolerance to the contaminants. The growth rates of hemp, compared with control, in soils fortified with chrysene and benzo[a]pyrene at concentrations of each varying from 25 to 200 micrograms/g were consistently above 100%. The plants grew from seed for 45 days in soil fortified with PAHs at concentrations of 25, 50, and 75 micrograms/g. Controls were pots with contaminated soil but no plant. PAHs levels were significantly reduced in all pots (control and seeded pots), except for one set at a high concentration of chrysene, which may be due to uneven spiking. A time course study over 28 days was done to monitor changes of microbial count and levels of chrysene. Little changes were observed for the total microbial count in the soil, and the concentration of chrysene in the soil decreased slightly in the pots containing plants. However, the chrysene levels in those pots were consistently lower than those in the pots without plants.

Industrial Hemp is Key to Clean Soil



Hemp is a variety of the plant species *cannabis sativa* L. that contains minimal amounts (less than 1%) of THC, the primary psychoactive ingredient in marijuana. It is a tall, slender, fibrous plant similar to flax. Various parts of the plant can be used to make a wide variety of textiles, paper, paints, animal feed, plastics, clothing, cosmetics, medicine, food products, insulation, and many others. One of the most intriguing uses for industrial hemp is in cleaning up soil contamination. Nowadays, seemingly everyone is looking to jump on the 'green Earth' bandwagon, and most of these folks don't even realize that one of the potentially biggest contributing factors to a cleaner planet is industrial hemp. It's easy to grow and inexpensive to maintain, however it's most likely banned in your state. It's been illegal to grow for decades now, and this has more and more people scratching their heads as to why.

In the late 1990s industrial hemp was tested at the site of the Chernobyl nuclear disaster in Ukraine to help heal the soil. Because of the quick rate in which it grows, up to 250 to 400 plants (15ft in height) per square meter, industrial hemp showed it could clean the land of contaminated pollutants like sewer sludge, fly ash, and other metals. In 1989, three years after the explosion, the Soviet government asked the International Atomic Energy Agency to assess the radiological and health situation in the area around the power plant. Toxic metals and radioactive emissions were contaminating the dirt, plants, and animals. Iodine, cesium-137, strontium, and plutonium were among some of the harmful toxins infesting nearly everything in the surrounding area.

A soil cleanup method was proposed using green plants to remove the toxins from the soil in a technique called *phytoextraction*. This was the term created by Dr. Ilya Raskin of Rutgers University. He was one of the original members of the team who was asked to examine food safety at the Chernobyl site. Phytoremediation is a process that takes advantage of the fact that green plants can extract and concentrate certain elements within their ecosystem. Some plants can grow in metal-laden soils, extract certain metals through their roots, and accumulate them in their tissues without being damaged. In this way, pollutants are either removed from the soil and groundwater or rendered harmless. This complex filtering system would prove to be effective in sucking out pollutants and leaving only the natural, fresh, soil. Much like a maggot might be used to clean a wound. There are a handful of scientists, researchers, and companies funding efforts to test the different varieties of plants that can be used in this process to clean polluted soils, and make no mistake, industrial hemp is at the forefront.

Ricky L. Loftin
4520 Monticello Rd. 2C
Columbia, South Carolina 29203

11-13-15

Mr. Mark Cuban
320 South Walton St.
Dallas, Texas 75226

Dear Sir:

I have written to you in past concerning backing Hemp for Mother Earth...Common Sense, Insight, Imagination, Ingenuity, Innovation & Integrity! I have strived to bring small business and job creation to rural areas of South Carolina since 2005 without getting any help from my Politicians!

We have two factories sitting empty in South Carolina that would be great for Hemp Plastic and pressing Hemp seeds into oils for the benefit of medical condition in our Citizens! These two factories have great railroad tracks that reach everywhere in United States to deliver our products. Hemp plastic would provide the 17 car manufacturers within a 600 mile radius of South Carolina. We could employ 1000 people in 18 months and run three shifts. Governor Haley has refused to help our Citizens and let three Foreign Corporation move into South Carolina to supply HEMP products for car manufacturers. German Corporation opened a small factory in Anderson to supply plastic. Chinese Corporations have moved to Indian Land (hemp clothe) and Travelers Rest (hemp carpet) to auto industry. We need your help to provide South Carolina citizens with opportunities to compete and keep our production from agriculture to manufacturing right here at home by our Citizens!

I wrote NFL Commissioner in 2014 and ask him to legalize Medical Marijuana for NFL Injuries. Three weeks after I sent my letter; He made cannabis studies in NFL, three weeks later he gave 16 \$300,000.00 GRANTS to study cannabis on football injuries! Carl Eller is only one to respond to my letter(s). We have Roche Research in Florence that is for sale and could be used for NFL and Military studies with medical marijuana. Veterans just this week got green light for treating Veterans with cannabis! I want to keep our Citizens in line for these small business and job creations. We are smart enough to do this ourselves if given the chance.

Levis Straus is using HEMP in there jeans for the first time in forty years. We have the closed sewing rooms and land to grow and meet their needs. Hemp will give us two paying crops a year on land that pine trees take 6 to 10 years to produce the pulp and you have to use poisons and chemicals in tree pulp to create everyday used items. Hemp uses no poisons or chemicals and leaves no carbon footprint. Let me make your Jet Fuel that leaves no carbon footprint? Henry Ford and Rudolph Diesel did this in 1930's before being shut down by Rockefeller, Hearst and DuPont???

Lucas Snyder (803) 678-7381) and myself need to get two cordage machines that thrash Hemp from Australia and be first on east coast with machines. They are only giving two machines per STATE so we want to get Georgia, Tennessee, Florida, North Carolina, Alabama, Mississippi, and Virginia too. These machines are portable and can be used in the field!

We do have a business plan for cordage machines but need help with hemp plastic and hemp oil plans. We are talking BILLIONS in 4 years and all Environmental positive for land, air, water and Earth's inhabitants.

This will put the Shark Tank thinking to the task of helping Citizens while creating trillions for our economy!

Thank you for your time. Peace & Happiness!

Ricky L. Loftin

hempformotherearth@yahoo.com (803) 716-7315

HEMP FOR MOTHER EARTH.....COMMON SENSE, INSIGHT,
IMAGINATION, INGENUITY & INTEGRITY!

