

SOUTH CAROLINA
DEPARTMENT OF LABOR, LICENSING AND REGULATION
ORGANIZATIONAL CHART

DECEMBER 2022

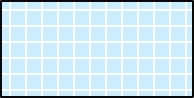
**SOUTH CAROLINA
DEPARTMENT OF LABOR, LICENSING AND REGULATION
ORGANIZATIONAL CHARTS**

Light Orange Square



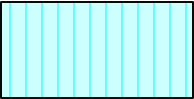
Employee Exempt from Grievance

Light Blue Square



**Employee returned after TERI
or Retirement; Exempt Grv**

Turquoise Vertical Stripe



**Employee eligible to retire
within 5 years by service
or age**

White Solid Red Letters



**Vacant Position-Vacancy
Date**

Yellow Diagonal Stripe



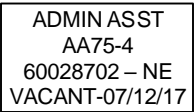
Temporary Employee

Dark Pink Outline



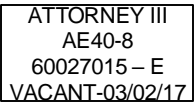
Borrowed position

NE Designation



Non-exempt position

E Designation



Exempt position

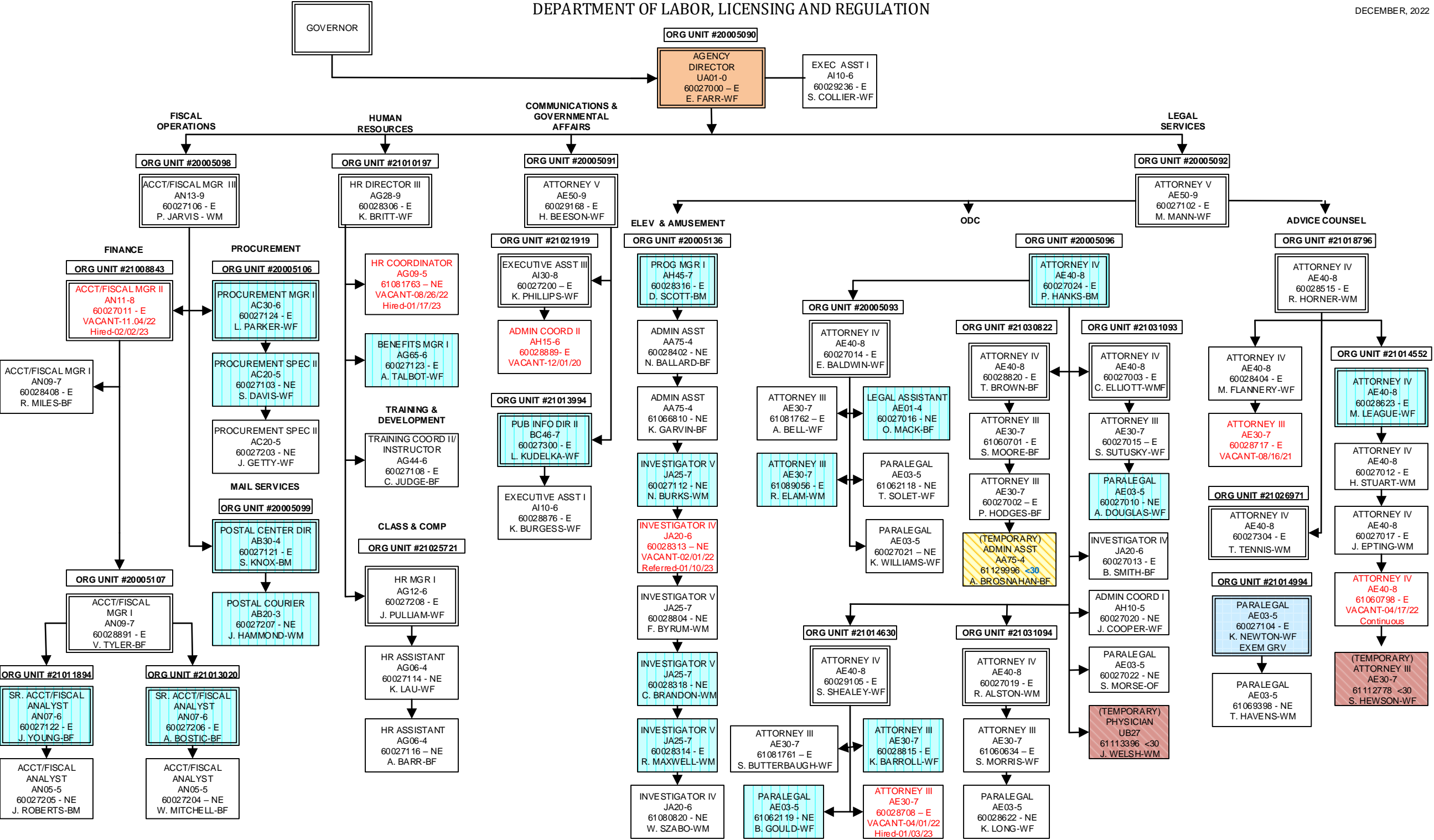
Purple Diagonal
Stripe



Two-Week Break

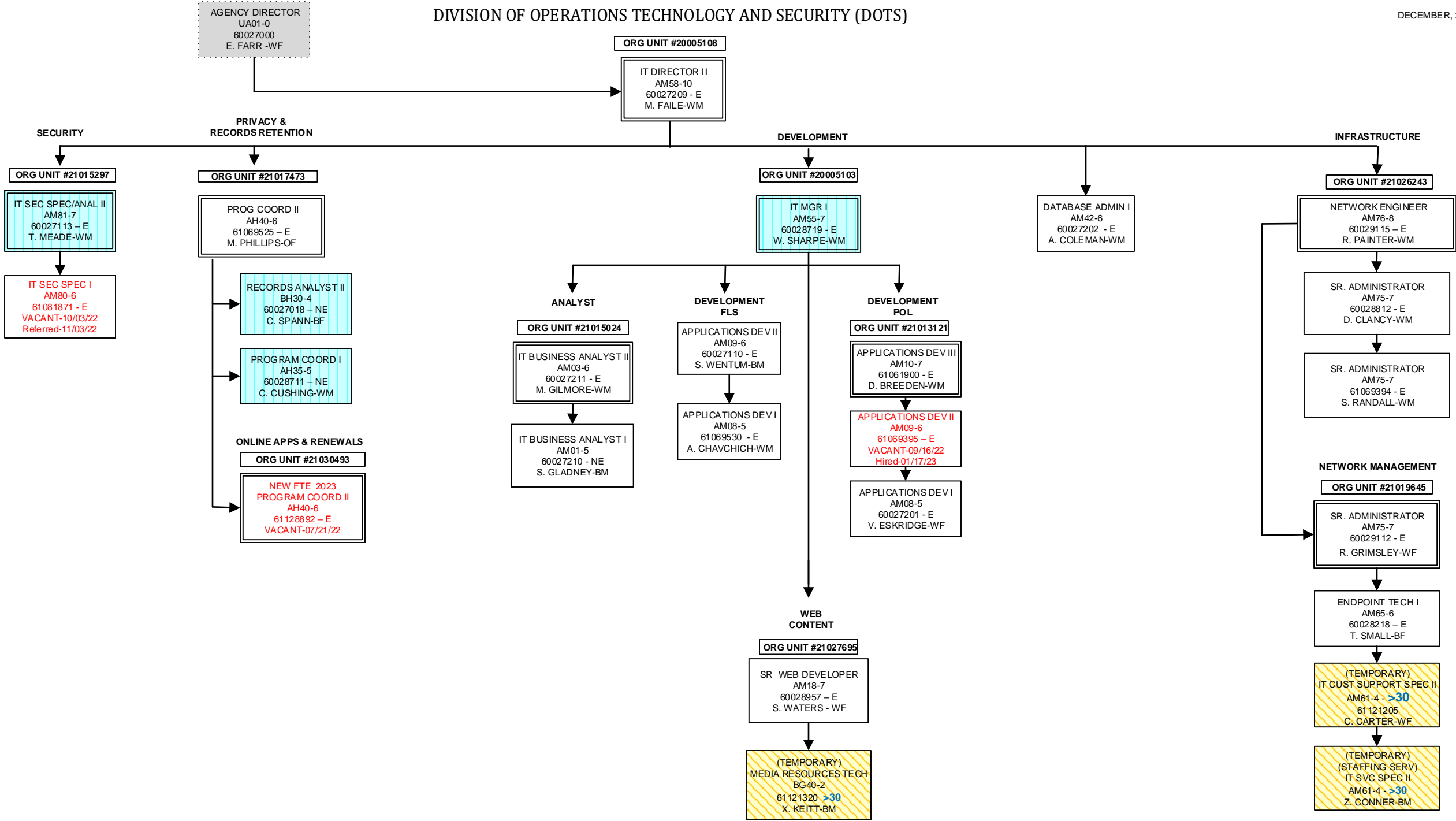
DEPARTMENT OF LABOR, LICENSING AND REGULATION

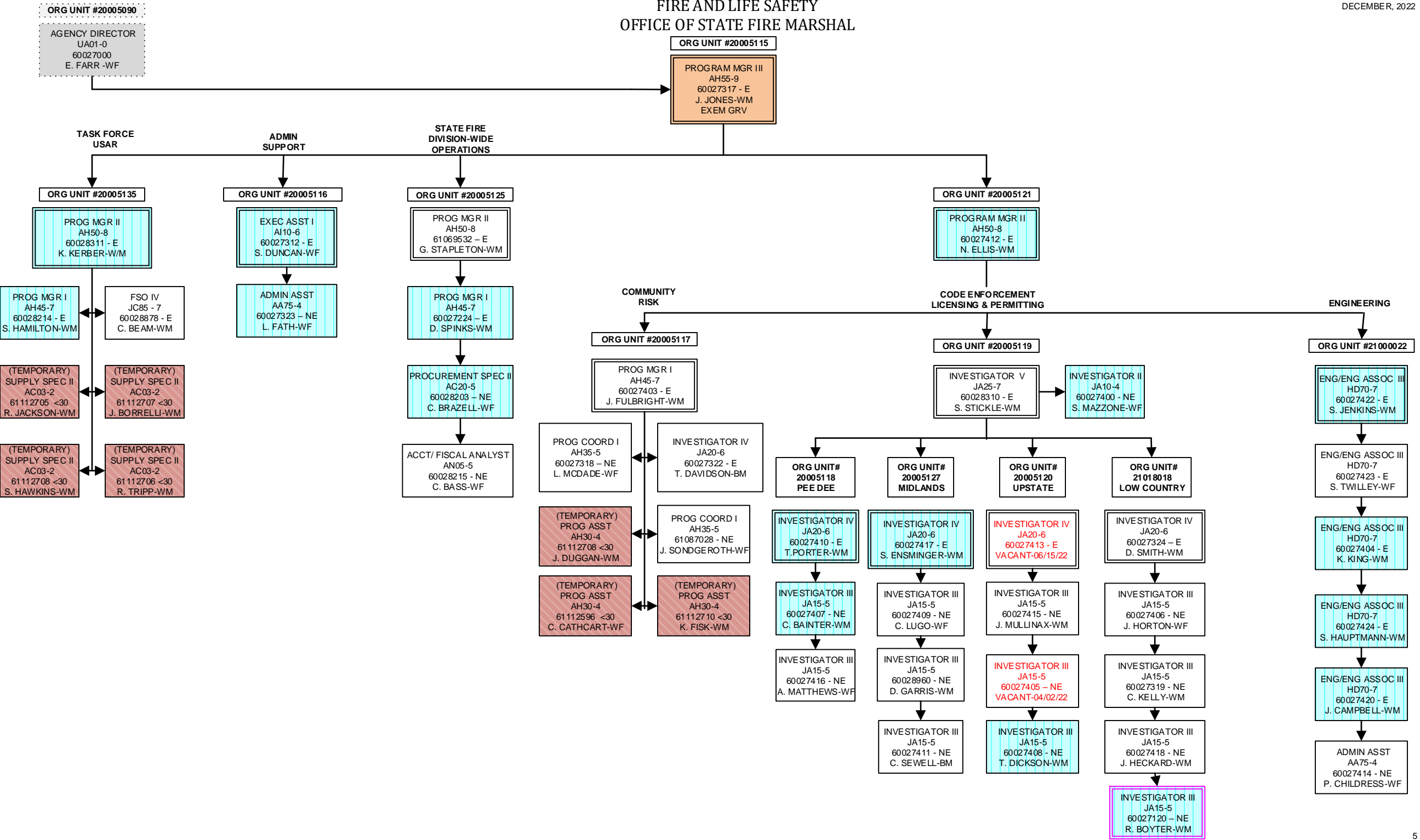
DECEMBER, 2022



DIVISION OF OPERATIONS TECHNOLOGY AND SECURITY (DOTS)

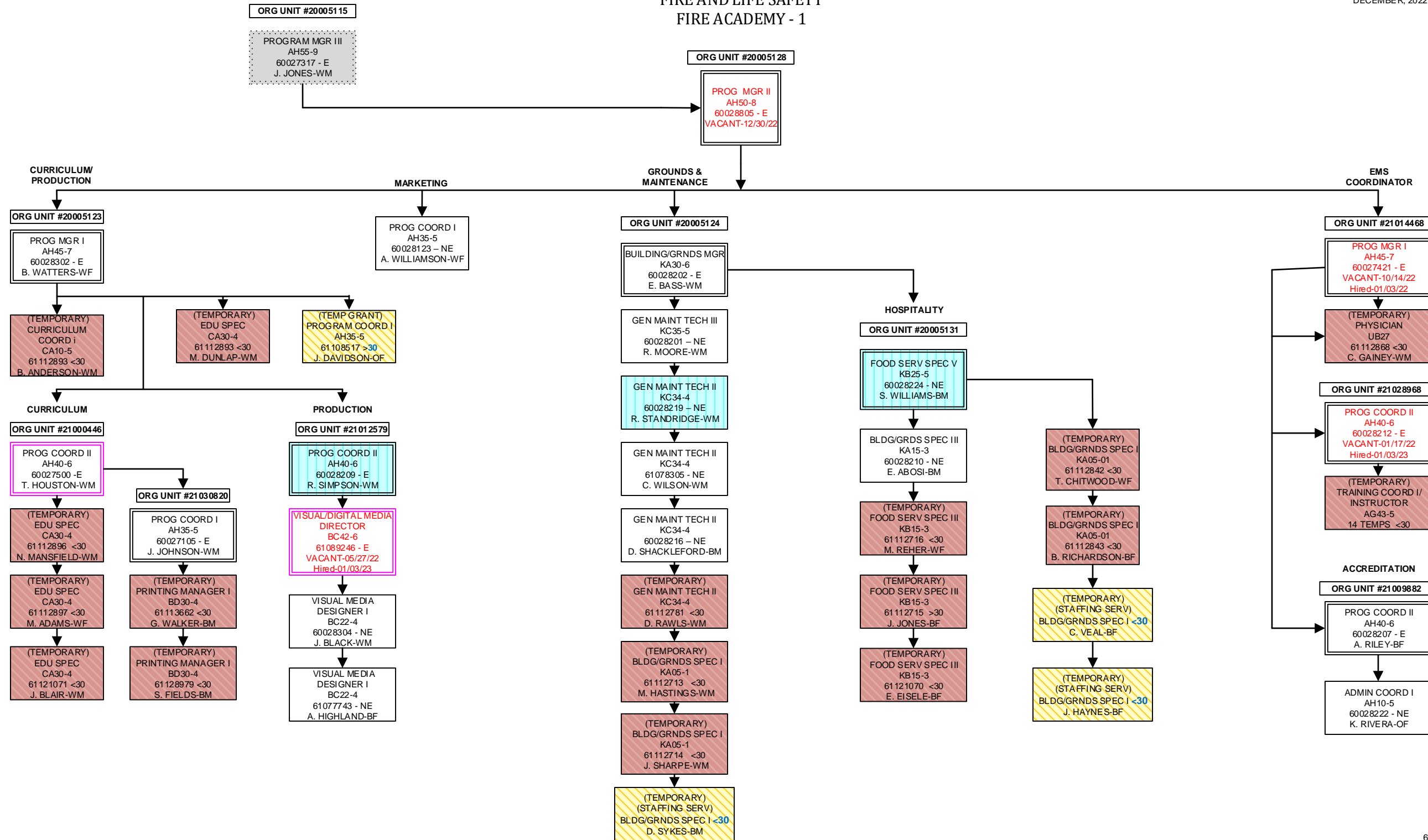
DECEMBER, 2022





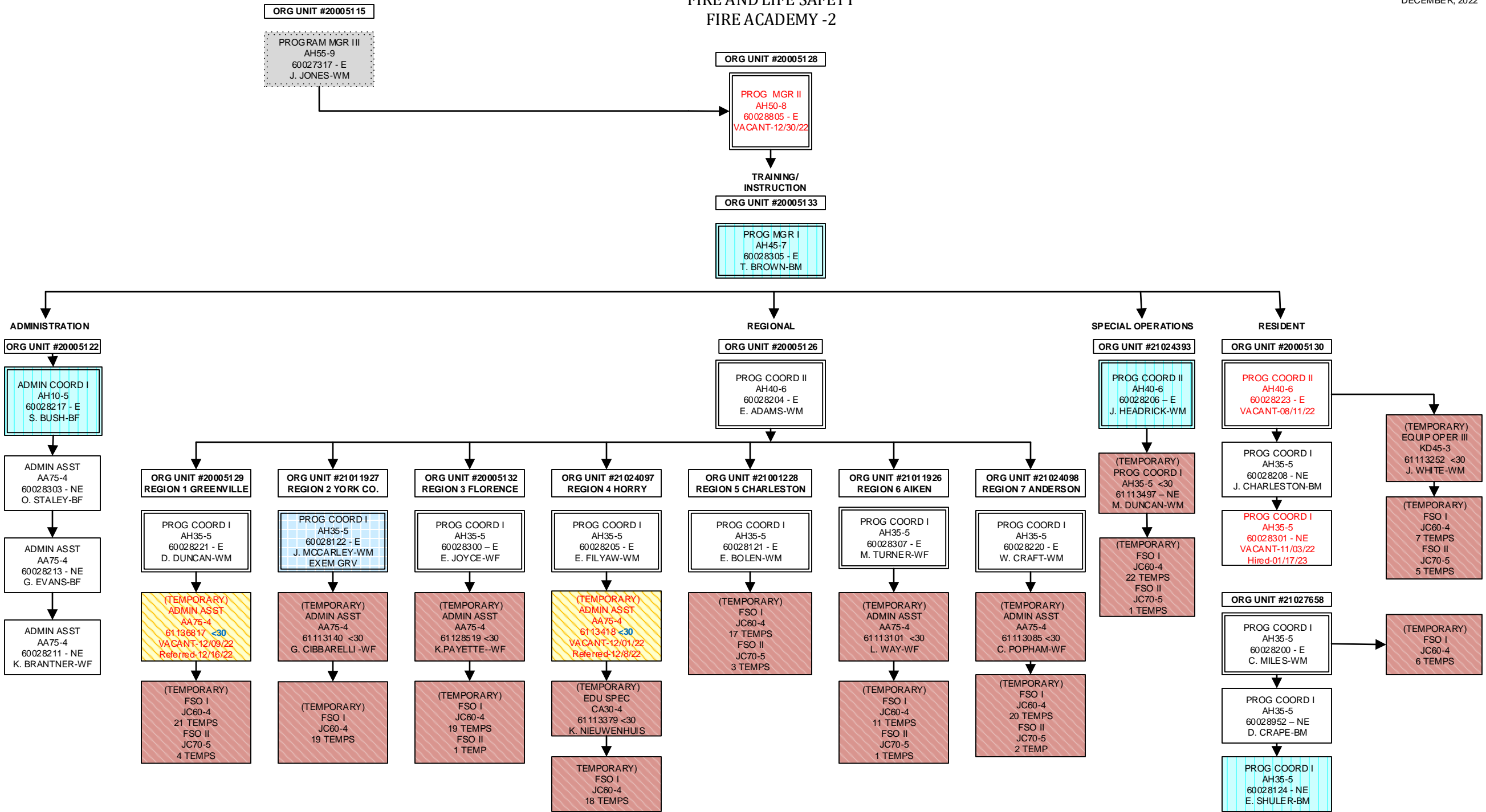
FIRE AND LIFE SAFETY
FIRE ACADEMY - 1

DECEMBER, 2022

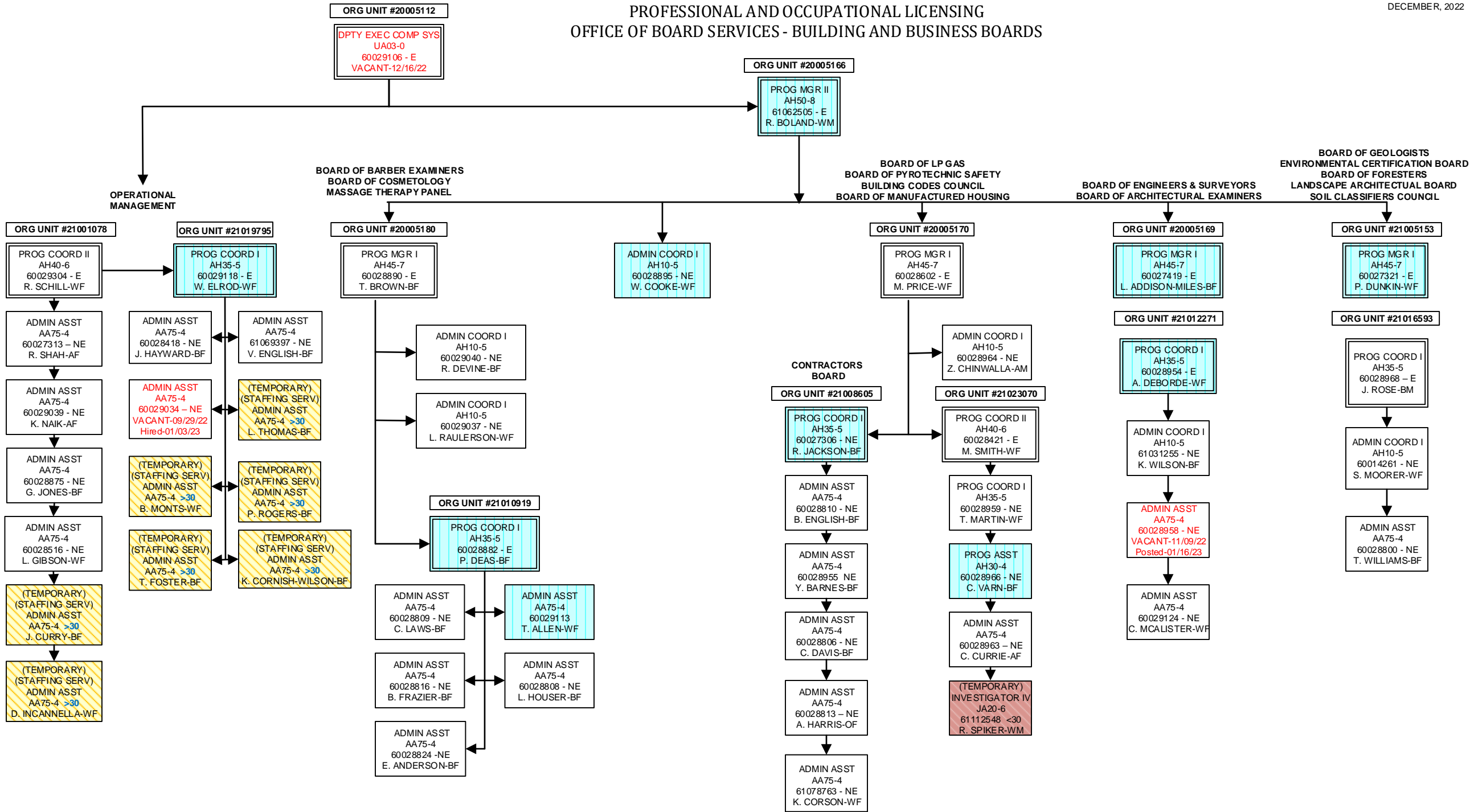


FIRE AND LIFE SAFETY
FIRE ACADEMY -2

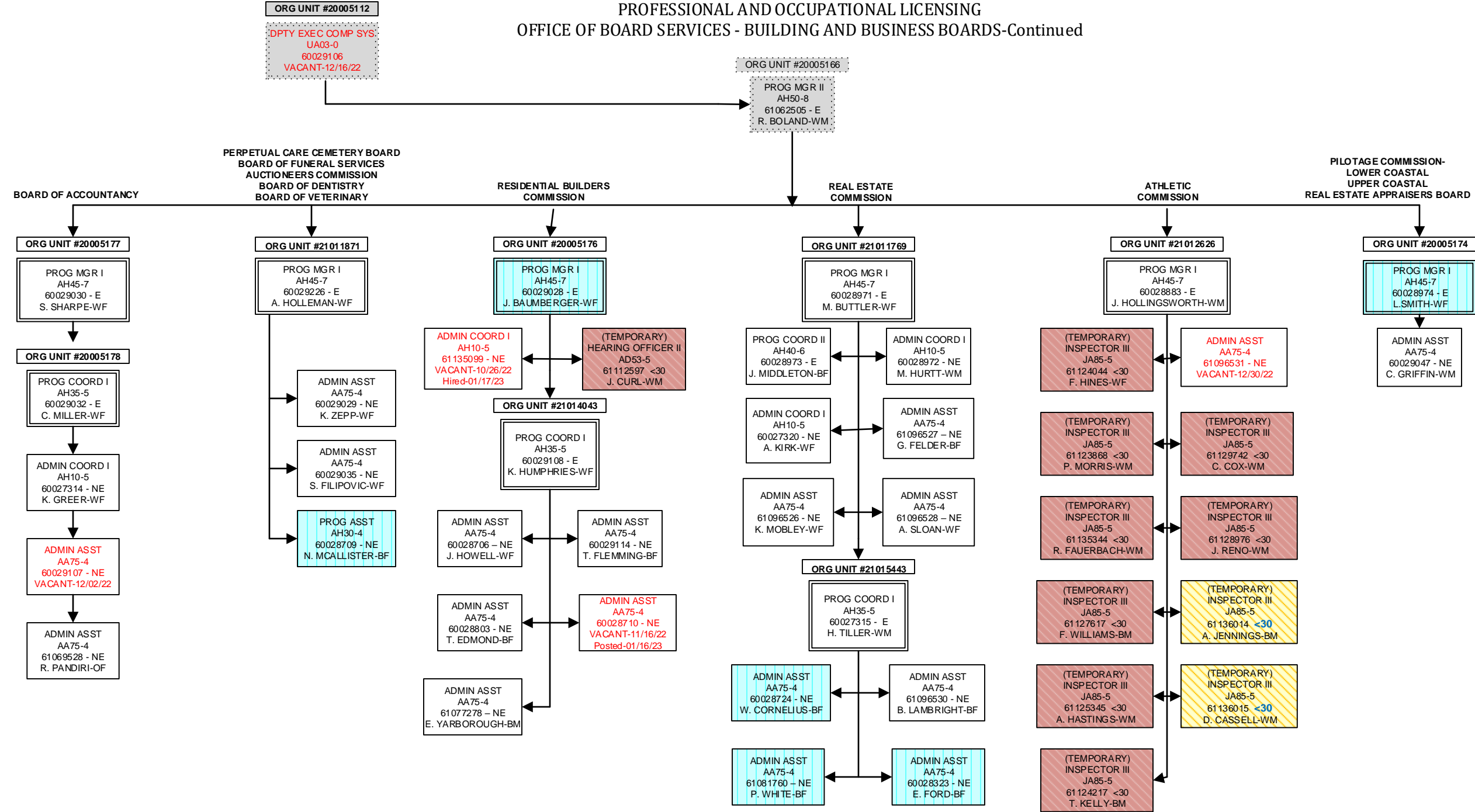
DECEMBER, 2022



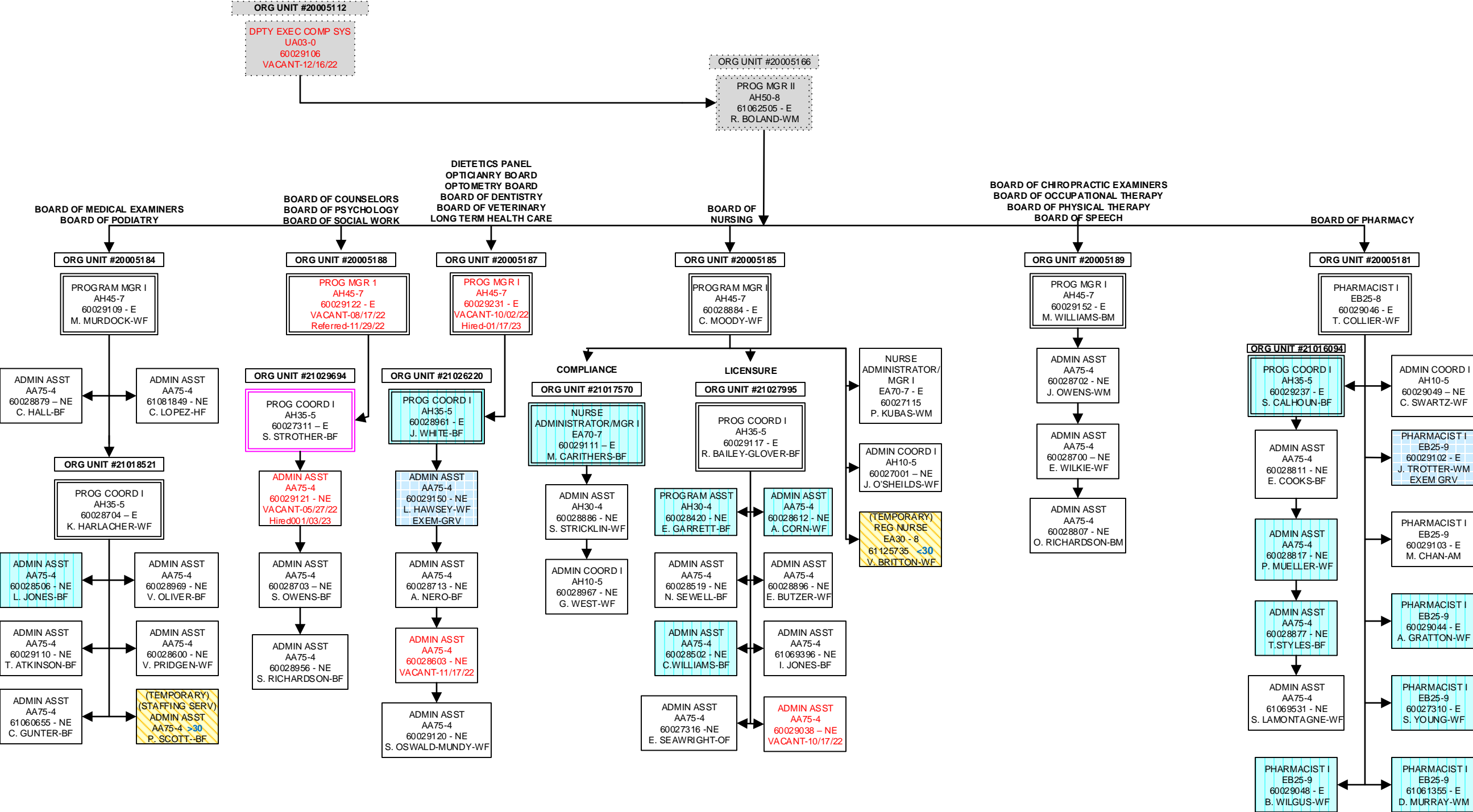
PROFESSIONAL AND OCCUPATIONAL LICENSING
OFFICE OF BOARD SERVICES - BUILDING AND BUSINESS BOARDS



PROFESSIONAL AND OCCUPATIONAL LICENSING
OFFICE OF BOARD SERVICES - BUILDING AND BUSINESS BOARDS-Continued



OFFICE OF BOARD SERVICES
HEALTH AND MEDICALLY RELATED BOARDS



OFFICE OF INVESTIGATIONS AND ENFORCEMENT

DECEMBER, 2022

