
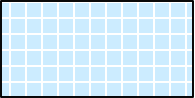
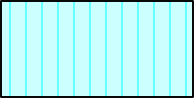



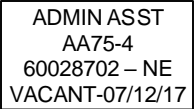
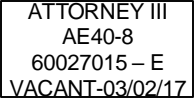


SOUTH CAROLINA
DEPARTMENT OF LABOR, LICENSING AND REGULATION
ORGANIZATIONAL CHART

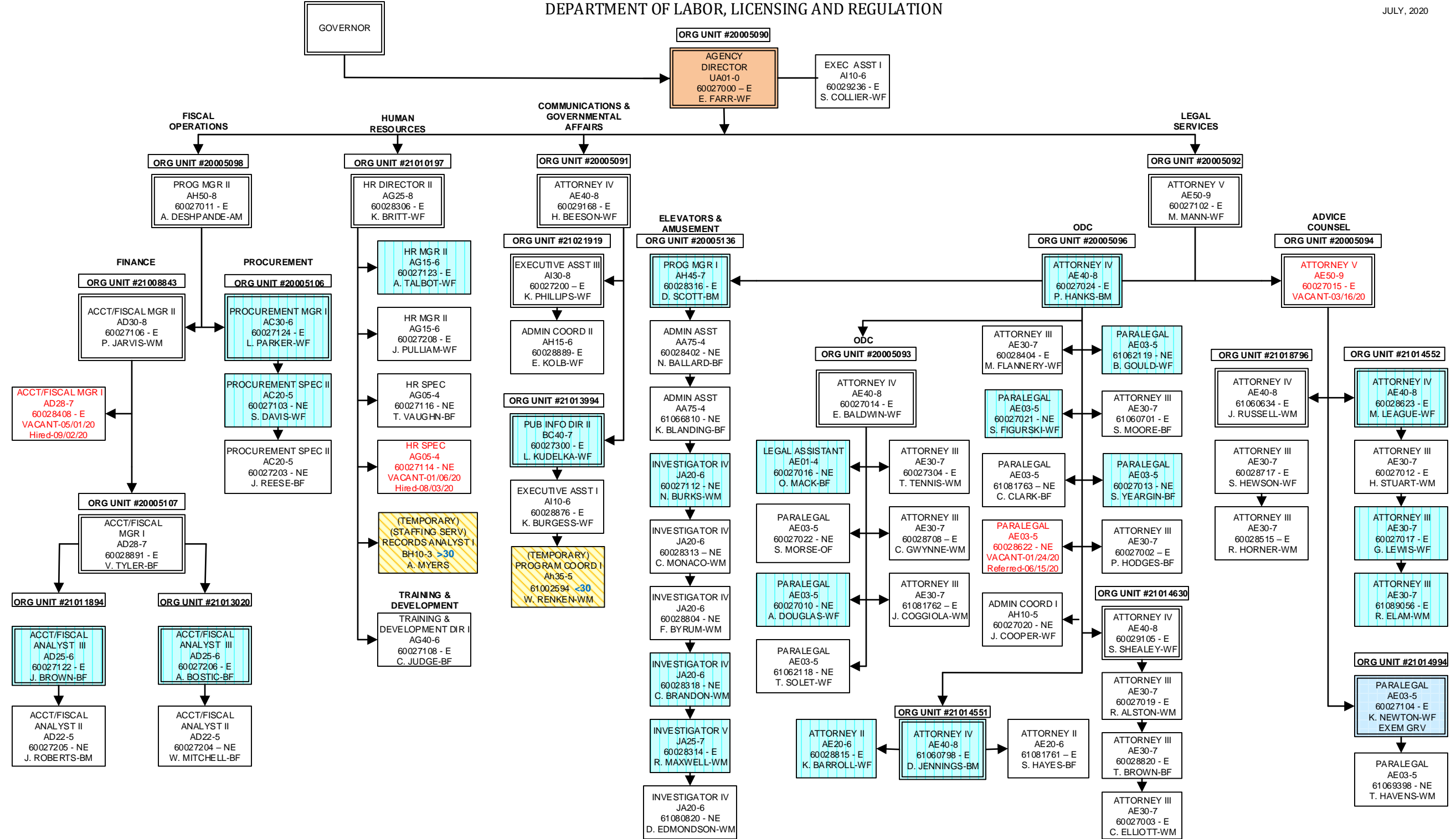
JULY 2020

SOUTH CAROLINA
DEPARTMENT OF LABOR, LICENSING AND REGULATION
ORGANIZATIONAL CHARTS

Light Orange Square		Employee Exempt from Grievance
Light Blue Square		Employee returned after TERI or Retirement; Exempt Grv
Turquoise Vertical Stripe		Employee eligible to retire within 5 years by service or age
White Solid Red Letters		Vacant Position-Vacancy Date
Yellow Diagonal Stripe		Temporary Employee
Dark Pink Outline		Borrowed position
NE Designation		Non-exempt position
E Designation		Exempt position

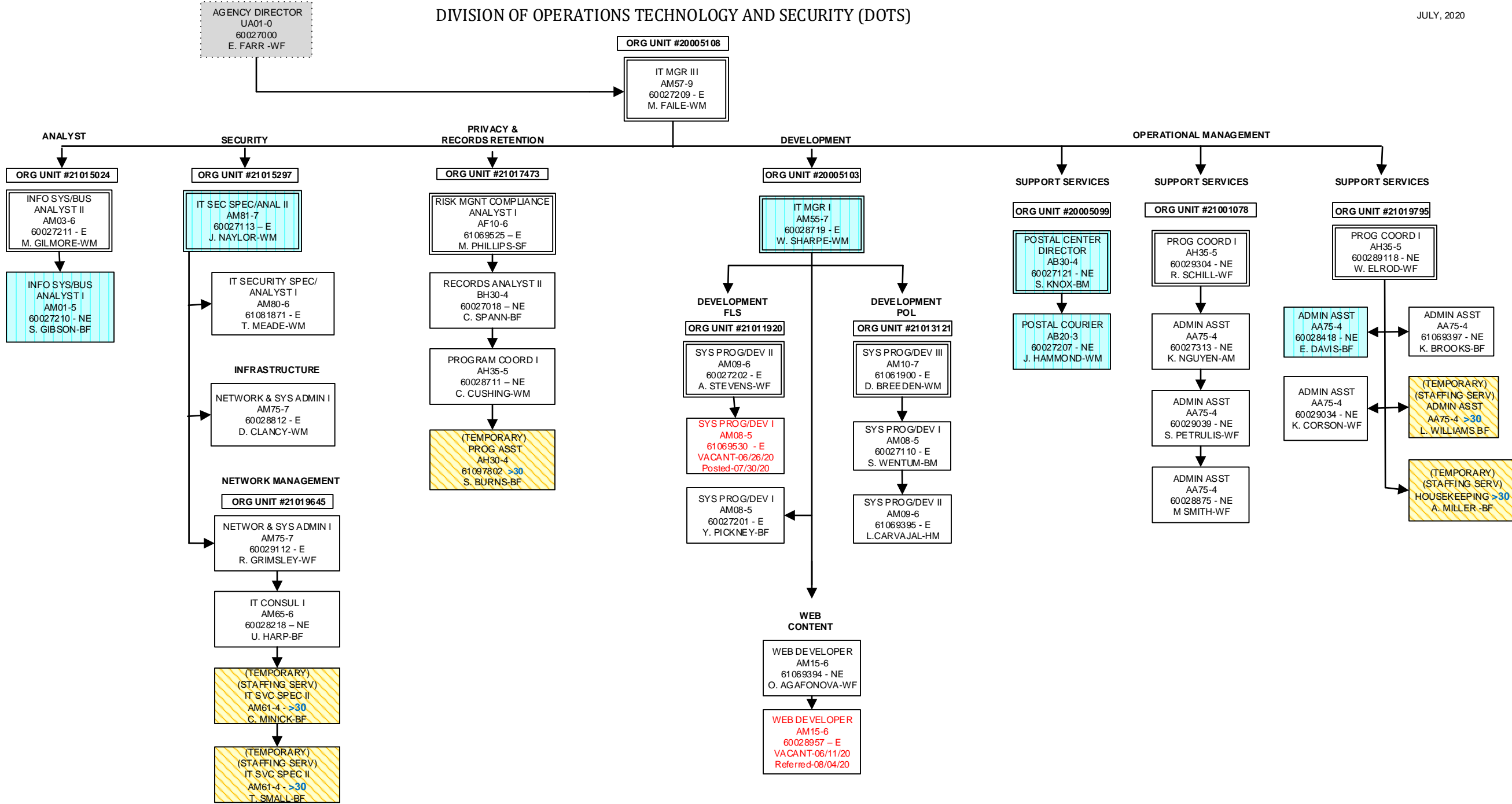
DEPARTMENT OF LABOR, LICENSING AND REGULATION

JULY, 2020



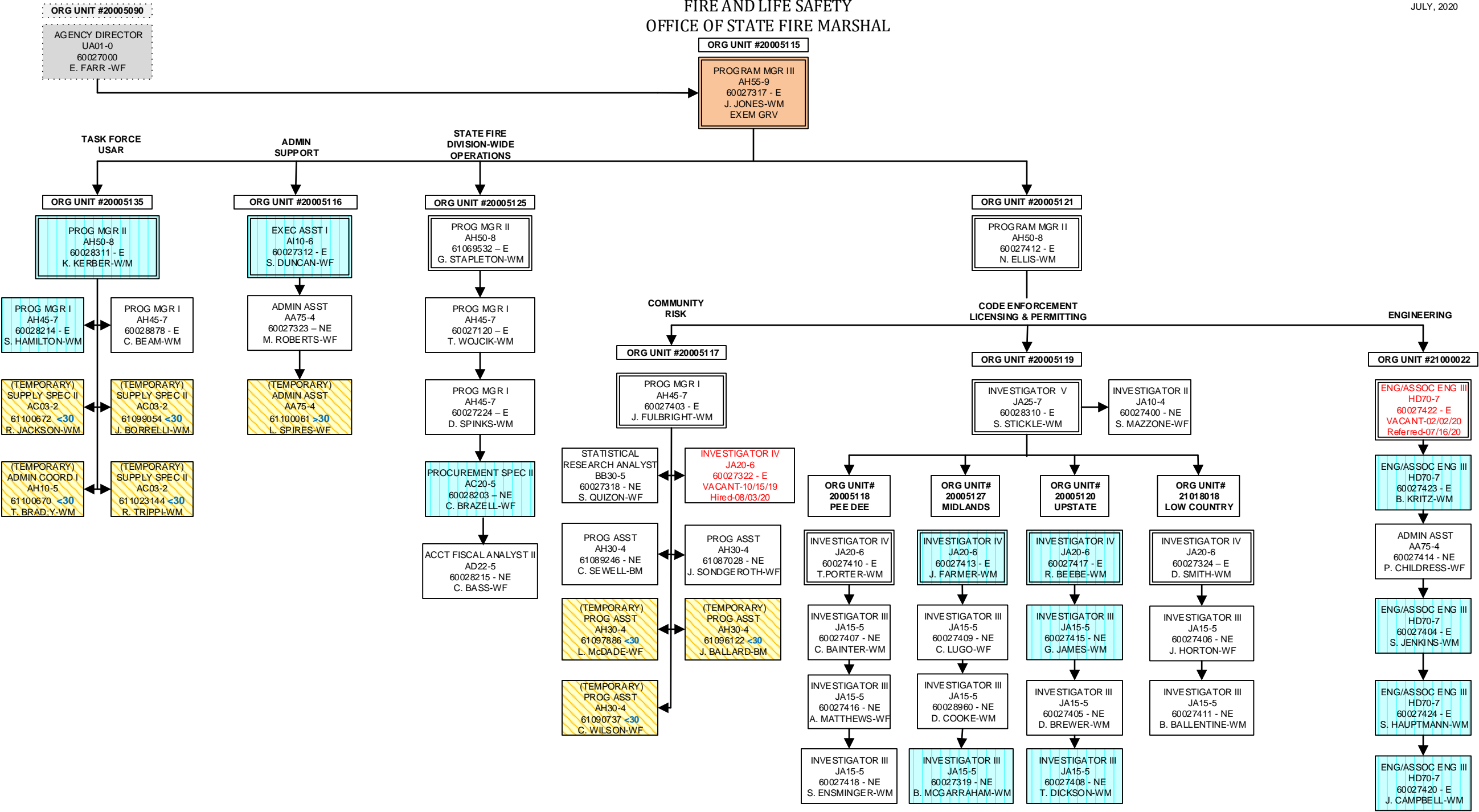
DIVISION OF OPERATIONS TECHNOLOGY AND SECURITY (DOTS)

JULY, 2020

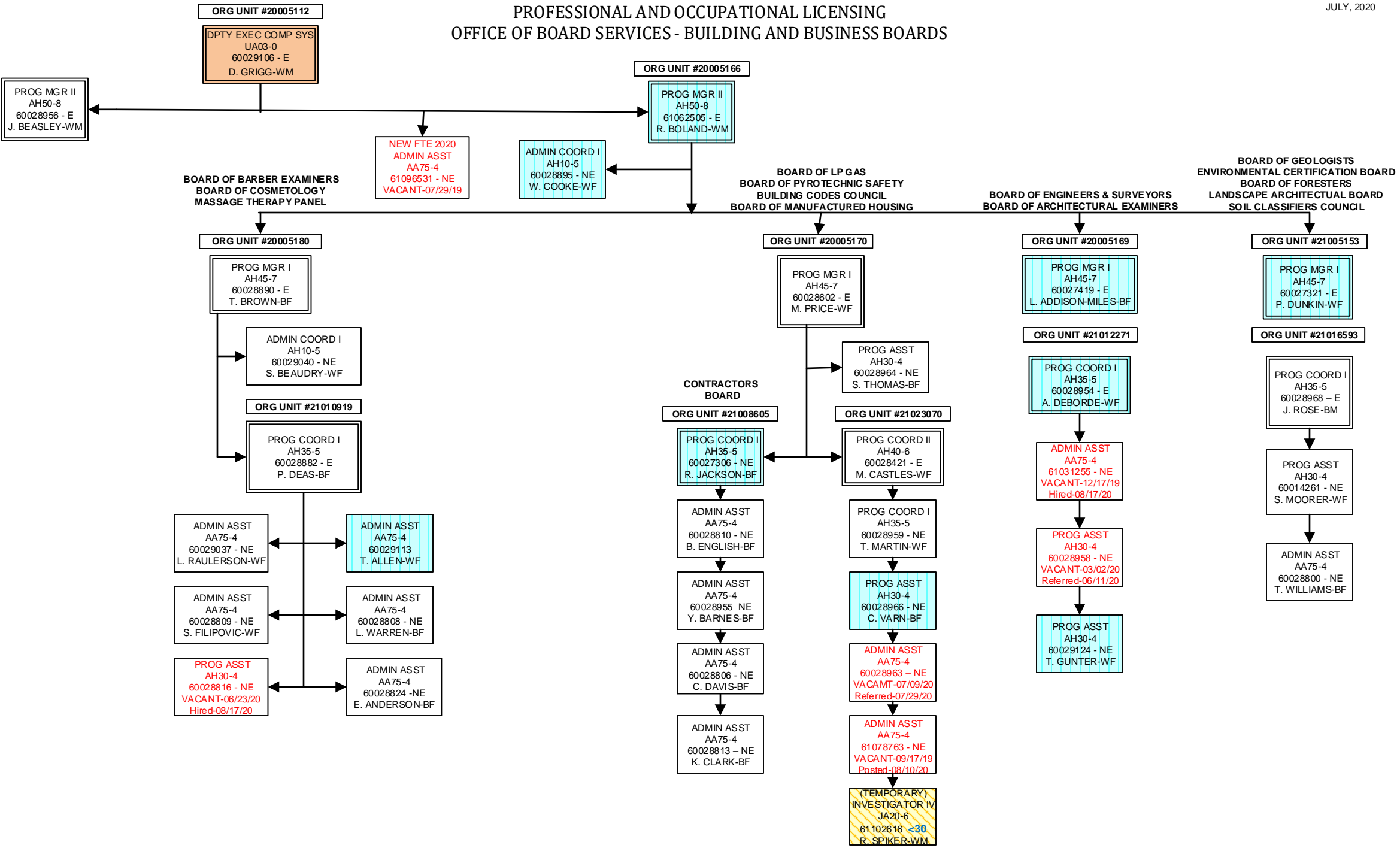


FIRE AND LIFE SAFETY
OFFICE OF STATE FIRE MARSHAL

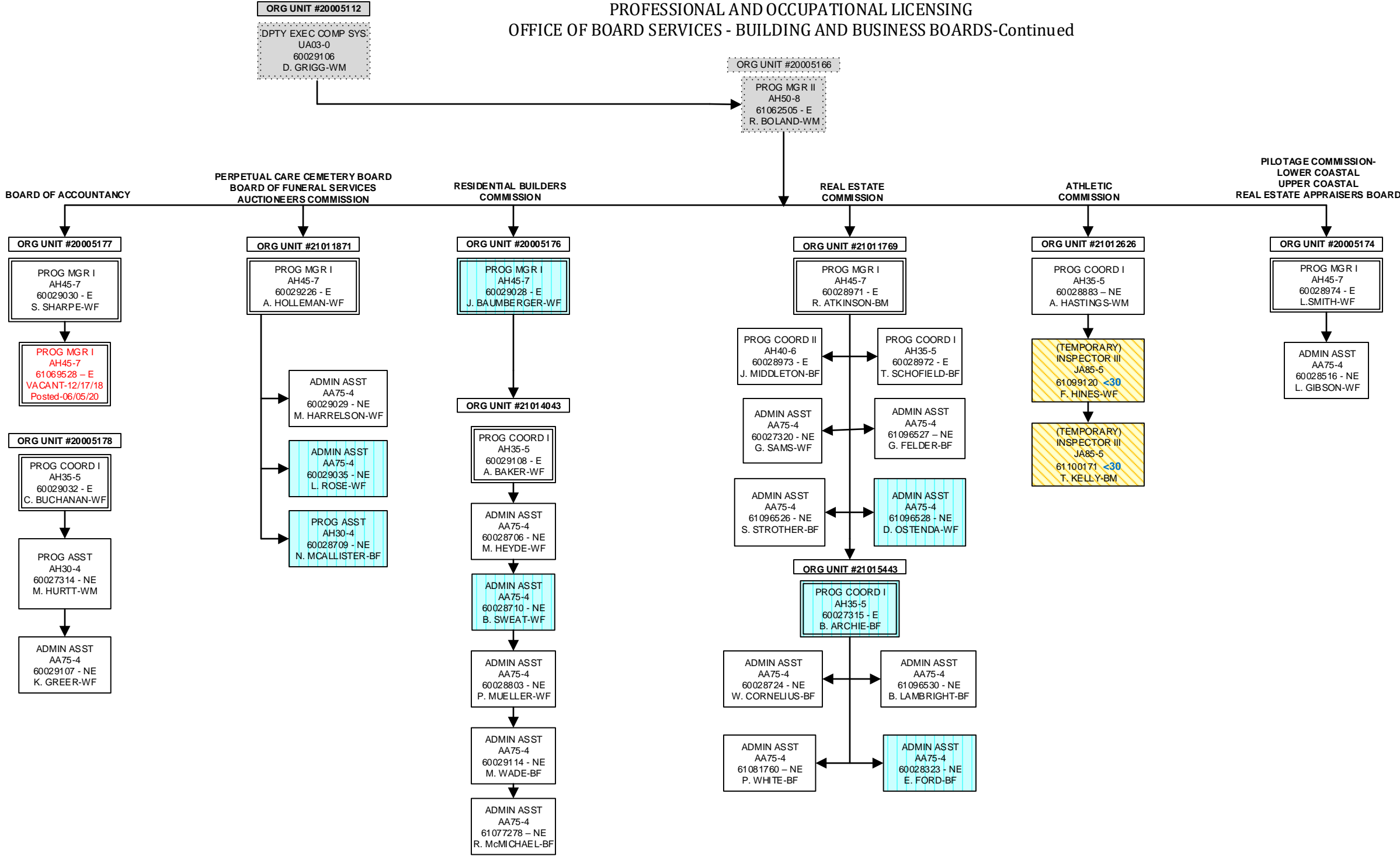
JULY, 2020



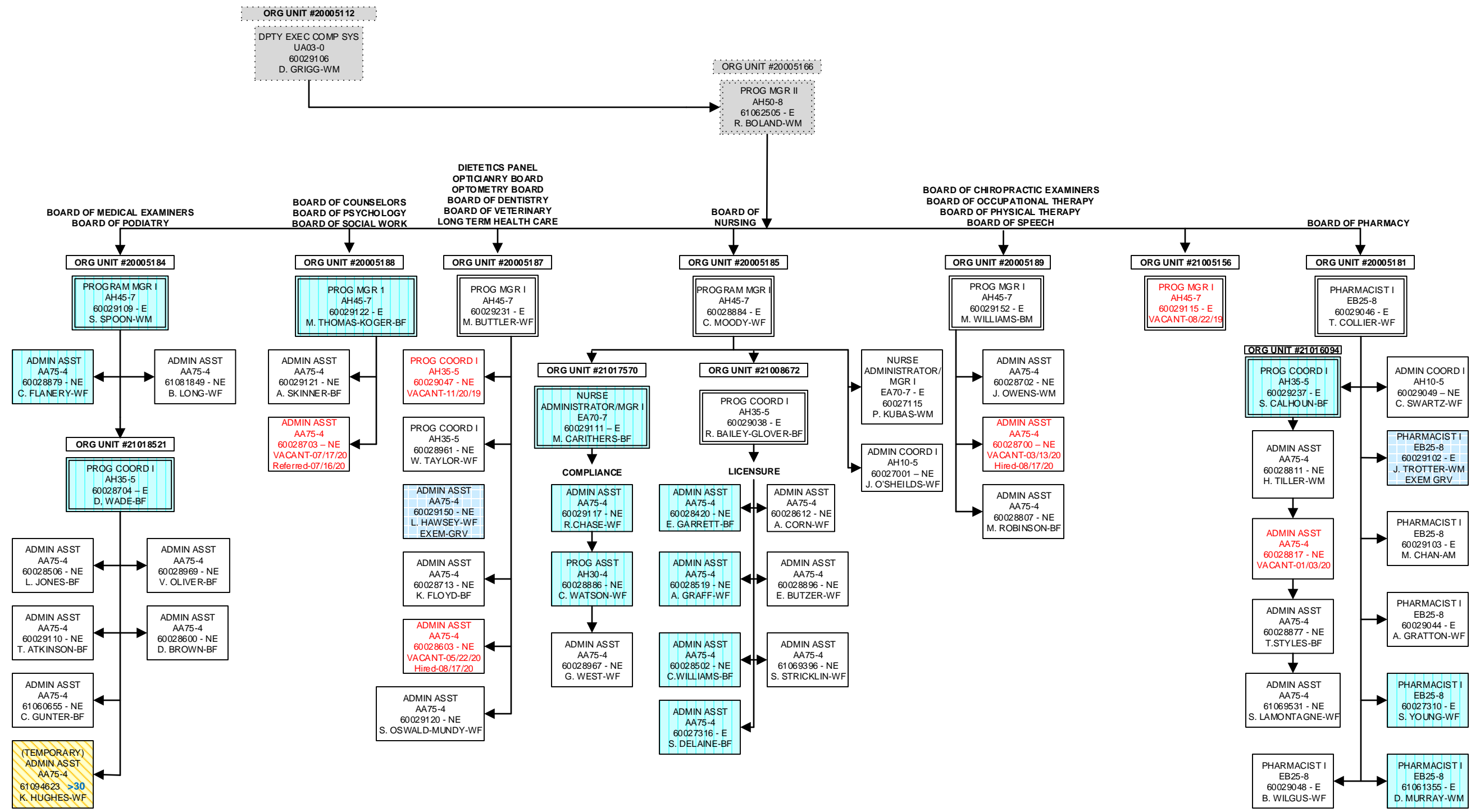
JULY, 2020



PROFESSIONAL AND OCCUPATIONAL LICENSING
OFFICE OF BOARD SERVICES - BUILDING AND BUSINESS BOARDS-Continued



OFFICE OF BOARD SERVICES
HEALTH AND MEDICALLY RELATED BOARDS



OFFICE OF INVESTIGATIONS AND ENFORCEMENT

