

From: Schimsa, Rebecca <RebeccaSchimsa@gov.sc.gov>

To: Haley, Nikki <govhaley@gov.sc.gov>

Haley, Michael <MichaelHaley@gov.sc.gov>

Patel, Swati <SwatiPatel@gov.sc.gov>

Pisarik, Holly <HollyPisarik@gov.sc.gov>

Godfrey, Rob <RobGodfrey@gov.sc.gov>

Smith, Austin <AustinSmith@gov.sc.gov>

Date: 6/6/2016 9:40:24 AM

Subject: RE: EMD Alert - TS Colin

More information from morning updates:

Advisories: A Tropical Storm Warning is in effect from the Savannah River to the Charleston/Georgetown County line. A Tropical Storm Watch is in effect from the southern edge of Georgetown County to the northern edge of Horry County. A Flash Flood Watch is in effect for portions of the NWS Charleston coverage area.

Effects on SC: The coast could see as much as 6 inches of rain with 4 inches further inland and this appears to be our greatest threat. Current predictions indicate 40-50 mph winds along the coast. Storm surge inundation is not expected with this system. Our window for storm activity will begin later today and last through much of tomorrow and include flooding and power outages. While similar to TS Bonnie, TS Colin will be a bit stronger in terms of both rain and wind speeds. However, the good news is the stronger winds and rains are expected to be east of the storm's center which should be off the SC coast.

Counties: All counties remain at OPGON 5 and are not planning any specific activities other than keeping their EOC staffs informed.

From: Schimsa, Rebecca

Sent: Monday, June 06, 2016 8:36 AM

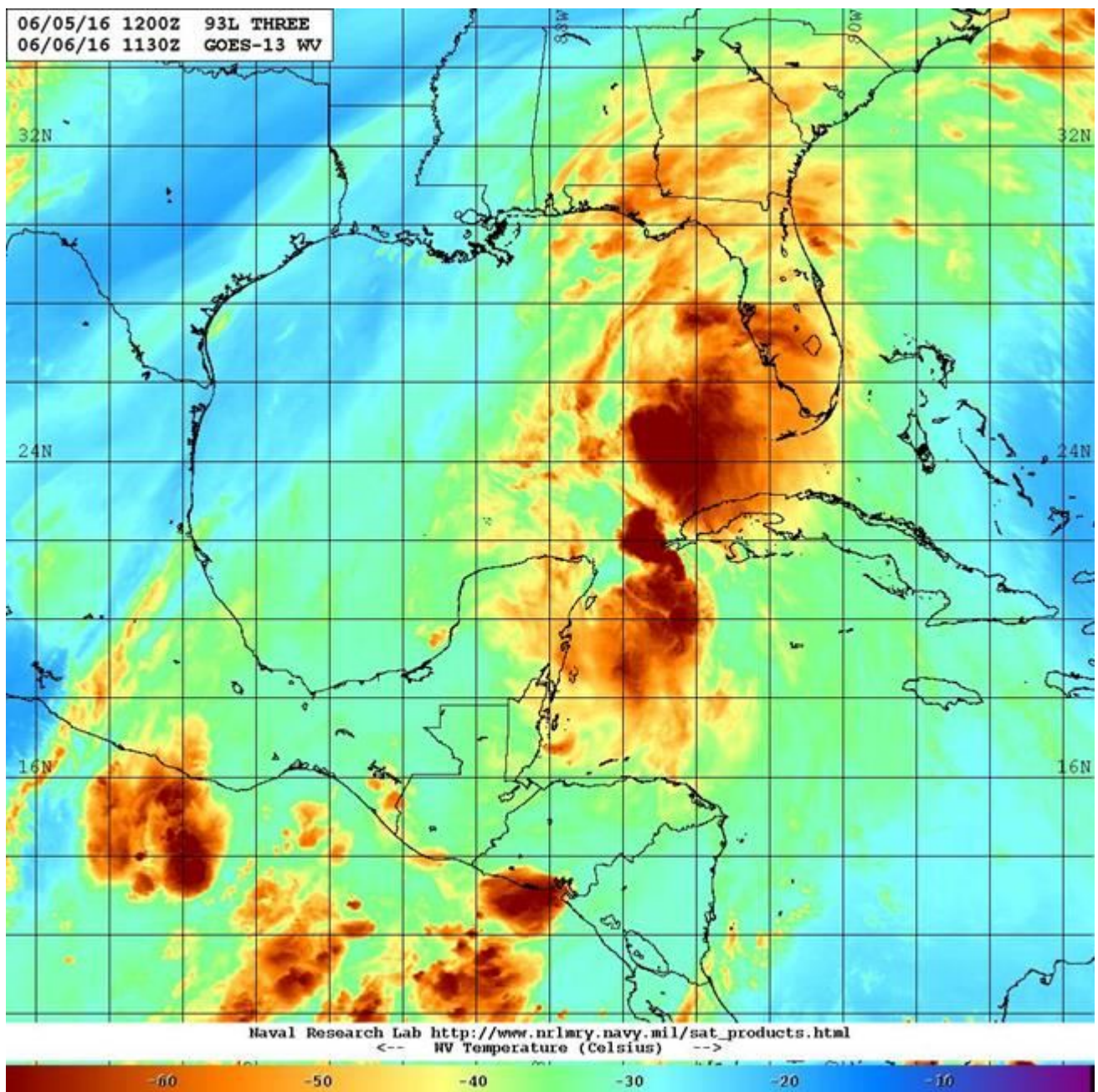
To: Haley, Nikki; Haley, Michael; Patel, Swati; Pisarik, Holly

Subject: EMD Alert - TS Colin

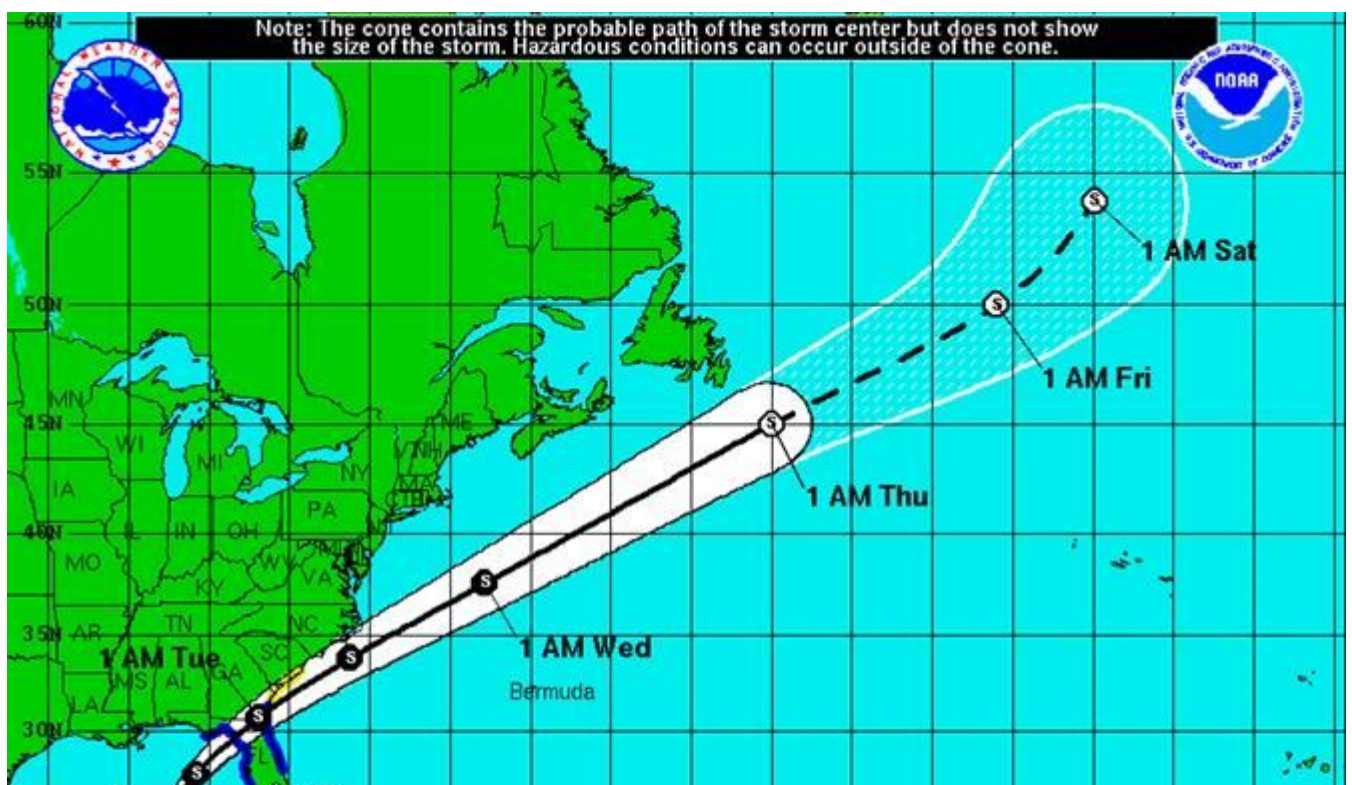
Yesterday, Tropical Storm Colin formed and is currently 630 miles southwest of Beaufort SC. Colin is tracking northeast at 15 mph with 50 mph winds. Colin will make landfall near Cedar Key FL later tonight.

Colin rockets across Florida and is offshore Charleston by 0700 tomorrow as a disorganized tropical storm. Strongest winds remain off the beach. Colin could bring periods of heavy rain along the coast. Conservative rainfall amounts of 4-6 inches south and east of a line from Barnwell to Dillon County are indicated in the latest model run but those amounts are highly dependent on the actual track of Colin that will remain poorly organized.





National Hurricane Center's track forecast:



Mark Malsick
SC State Climate Office
SC Department of Natural Resources
1000 Assembly Street, Columbia SC 29001
803-734-0039
malsickm@dnr.sc.gov