
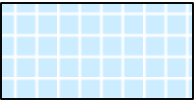
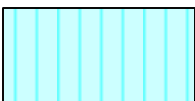





SOUTH CAROLINA
DEPARTMENT OF LABOR, LICENSING AND REGULATION
ORGANIZATIONAL CHART

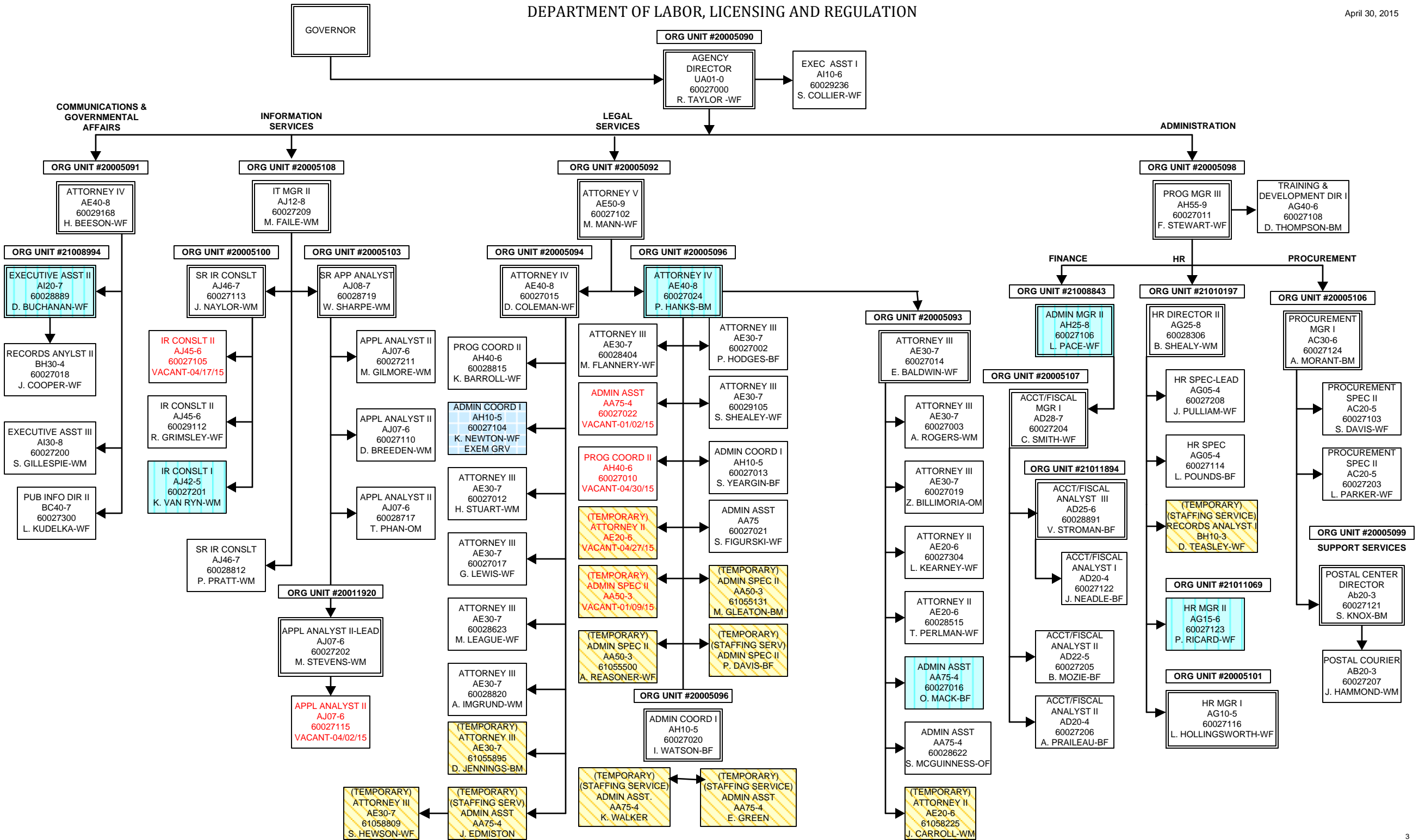
April 30, 2015

**SOUTH CAROLINA
DEPARTMENT OF LABOR, LICENSING AND REGULATION
ORGANIZATIONAL CHARTS**

Pink Diamond		TERI Employee
Light Blue Square		Employee returned after TERI or Retirement
Turquoise Vertical Stripe		Employee eligible to retire within 5 years by service or age
White Solid Red Letters		Vacant Position-Vacancy Date
Yellow Diagonal Stripe		Temporary Employee
Grayed out		Previously counted position

DEPARTMENT OF LABOR, LICENSING AND REGULATION

April 30, 2015



FIRE AND LIFE SAFETY
OFFICE OF STATE FIRE MARSHAL

April 30, 2015

ORG UNIT #20005090
AGENCY DIRECTOR
UA01-0
60027000
R. TAYLOR -WF

ORG UNIT #20005115
PROGRAM MGR III
AH55-9
60027317
R. POLK-WM
STATE FIRE MARSHAL

ORG UNIT #20005121
PROG MGR II
AH50-8
60028214
VACANT-8/1/14

PROG MGR II
AH50-8
60027120
VACANT

COMMUNITY
RISK

ORG UNIT #20005135
PROG MGR II
AH50-8
60028311
D. MCMANUS-WM

ORG UNIT #20005117
PROG MGR I
AH45-7
60027403
T. WOJCIK-WM

ORG UNIT #20005116
PROG COORD II
AH40-6
60027312
S. DUNCAN-WF

ORG UNIT #20005125
ADMIN COORD I
AH10-5
60028203
C. BRAZELL-WF

ORG UNIT #20005119
PROGRAM MGR I
AH45-7
60028310
S. STICKLE-WM

ORG UNIT #21008920
PROG MGR I
AH45-7
60027500
J. HOSHALL-WM

ORG UNIT #21000022
ENG/ASSOC ENG III
HD70-7
60027422
D. BLACKWELL-WM

(TEMPORARY)
ADMIN COORD I
AH10-5
61057779
C. DAVIS-WM

PROG COORD II
AH40-6
60027324
VACANT-3/28/12

(TEMPORARY)
PROG COORD I
AH35-5
61057768
R. PORZIA-WM

ADMIN COORD II
AH15-6
60028878
VACANT-6/10/14

(TEMPORARY)
PROG COORD I
AH35-5
61057770
R. TRIPP-WM

(TEMPORARY)
PROG COORD I
AH35-5
61057741
W. ALEXANDER-A/M

(TEMPORARY)
PROG COORD I
AH35-5
60157769
B. RHODES-WM

(TEMPORARY)
PROG COORD I
AH35-5
VACANT-04/01/15

(TEMPORARY)
PROG COORD I
AH35-5
61057977
E. WEINSTEIN-WM

(TEMPORARY)
PROG COORD I
AH35-5
61057771
S. RUTHERFORD-WM

PROG ASST
AH30-4
60027318
J. STOUT-WM

CURR COORD I
CA10-5
60027322
VACANT-04/08/15

(TEMPORARY)
PROG ASST
AH30-4
61057196
E. MODRZYNSKI-WM

(TEMPORARY)
PROG ASST
AH30-4
61057585
A. AMACHER-WM

(TEMPORARY)
PROG ASST
AH30-4
VACANT-12/10/14

(TEMPORARY)
PROG ASST
AH30-4
61057195
K. BAILEY-WF

(TEMPORARY)
PROG ASST
AH30-4
61052976
B. DIGNES-WF

(TEMPORARY)
FSO II
JC70-4
2 TEMPS

ADMIN ASST
AA75-4
60027323
J. THOMAS-WF

ADMIN ASST
AA75-4
60028215
D. LEBAR-WF

ORG UNIT #20005118
PROG COORD I
AH35-5
60027410
T. PORTER-WM

INSPECTOR III
JA85-5
60027407
C. BAINTER-WM

INSPECTOR III
JA85-5
60027406
VACANT-12/15/14

INSPECTOR III
JA85-5
60027416
A. MATTHEWS-WF

INSPECTOR III
JA85-5
60028960
C. OGDEN-WM

ORG UNIT #20005127
PROG COORD I
AH35-5
60027413
J. FARMER-WM

INSPECTOR III
JA85-5
60027411
D. SMITH-WM

INSPECTOR III
JA85-5
60027405
M. FOWLER-WM

INSPECTOR III
JA85-5
60027409
VACANT-02/18/15

INSPECTOR III
JA85-5
60027412
P. STUKES-BRADLEY-BF

ORG UNIT #20005120
PROG COORD I
AH35-5
60027417
R. BEEBE-WM

INSPECTOR III
JA85-5
60027415
G. JAMES-WM

INSPECTOR III
JA85-5
60027418
T. PADGETT-WM

INSPECTOR III
JA85-5
60027408
J. JACKSON-BM

(TEMPORARY)
EDU SPEC
CA30-4
61049276
N. ELLIS-WM

ADMIN ASST
AA75-4
60027400
S. SCOGGIN-WF

ADMIN ASST
AA75-4
60027319
V. YONCE-WF

PROG COORD I
AH35-5
60027421
VACANT-3/8/14

ENG/ASSOC ENG III
HD70-7
60027423
B. KRITZ-WM

ADMIN ASST
AA75-4
60027414
P. CHILDRESS-WF

ENG/ASSOC ENG III
HD70-7
60027404
P. PATTERSON-WF

ENG/ASSOC ENG III
HD70-7
60027424
T. PENNY-WF

ENG/ASSOC ENG III
HD70-7
60027420
J. CAMPBELL-WM

FIRE AND LIFE SAFETY
FIRE ACADEMY

April 30, 2015

ORG UNIT #20005115
PROGRAM MGR III
AH55-9
60027317
R. POLK-WM
STATE FIRE MARSHAL

ORG UNIT #20005128
PROG MGR II
AH50-8
60028805
K. KERBER-WM

ORG UNIT #20005134

ADMIN COORD I
AH10-5
60028211
J. PRITCHETT-03/02/15

ORG UNIT #20005124

BLDG/GROUNDS
MGR
KA30-6
60028202
VACANT-01/02/15

ORG UNIT #21009882

TRAIN & DEV DIR I
AG40-6
60028207
R. DUNN-WM

ORG UNIT #20005133

PROG MGR I
AH45-7
60028305
P. RUSSELL-WM

ORG UNIT #20005126

PROG COORD II
AH40-6
60028204
R. BUSBY-WM

TRADES SPEC IV
KC40-4
60028123
J. KESTER-WM

TRADES SPEC IV
KC40-4
60028219
VACANT-8/1/14

TRADES SPEC V
KC50-5
60028216
J. GRIGGS-WM

TRADES SPEC IV
KC40-4
60028201
R. MOORE-WM

(TEMPORARY)
TRADES SPEC IV
KC40-4
61057193
D. RAWLS-WM

(TEMPORARY)
TRADES SPEC IV
KC40-4
61058355
C. OWEN-WM

ORG UNIT #20005123

CURR COORD II
CA20-6
60028302
B. WATTERS-WF

(TEMPORARY)
ED SPEC
CA30-4
61058166
K. WATSON-BF

ADMIN COORD I
AH10-5
60028222
K. WHITE-BF

PROG COORD I
AH35-5
60028209
VACANT-04/17/15

(TEMPORARY)
FSO II
JC70-4
2 TEMPS

MEDIA RESRC
SPEC II
BG60-4
60028304
J. BLACK-WM

(TEMPORARY)
EDU SPEC
CA30-4
61058585
D. RICKELHOFF-WM

(TEMPORARY)
FSO II
JC70-4
2 TEMPS

REGION 0
ORG UNIT #20005122

ADMIN COORD I
AH10-5
60028217
S. BUSH-BF

ADMIN ASST
AA75-4
60028303
K. RIVERA-WF

ADMIN ASST
AA75-4
60028213
G. EVANS-BF

REGION)
ORG UNIT #20005131

FOOD SERV SPEC V
KB25-5
60028224
C. JERMSTAD-WM

FOOD SERV SPEC III
KB15-3
60028218
VACANT-1/14/14

BLDG/GRDS SPEC III
KA15-3
60028210
S. WILLIAMS-BM

REGION 1
ORG UNIT #20005129

PROG COORD I
AH35-5
60028221
J. ANDERSON-WM

ADMIN ASST
AA75-4
60028220
C. BAKER-WF

(TEMPORARY)
FSO II
JC70-4
50 TEMPS

REGION 2
ORG UNIT #21011927

PROG COORD I
AH35-5
60028122
J. MCCARLEY-WM

(TEMPORARY)
FSO II
JC70-4
3 TEMPS

ORG UNIT #21001298

(TEMPORARY)
FSO II
JC70-4
61004300
T. MARTIN-WM

REGION 4
ORG UNIT #20005132

PROG COORD I
AH35-5
60028300
B. CASSIDY-WM
EXEM GRV

ADMIN ASST
AA75-4
60028205
C. CANUP-WF

(TEMPORARY)
FSO II
JC70-4
35 TEMPS

ORG UNIT #20005130

PROG COORD II
AH40-6
60028223
T. BROWN-BM

PROG COORD I
AH35-5
60028200
D. CROSSLAND-WM

PROG COORD I
AH35-5
60028121
T. FERREIRA-WM

(TEMPORARY)
FSO II
JC70-4
22 TEMPS

PROG COORD I
AH35-5
60028208
S. DAVIS-WM

PROG COORD I
AH35-5
60028952
G. PEATON-WM

(TEMPORARY)
FSO II
JC70-4
40 TEMPS

ORG UNIT #21009052

PROG COORD I
AH35-5
60028124
M. GEORGE-WM

ORG UNIT #21000446

PROG COORD II
AH40-6
60028212
C. BENNETT-WM

(TEMPORARY)
FSO II
JC70-4
3 TEMPS

REGION 5
ORG UNIT #21001228

PROG COORD II
AH40-6
60028206
B. TURNER-WM

ADMIN ASST
AA75-4
60028301
A. WILLIAMSON-WF

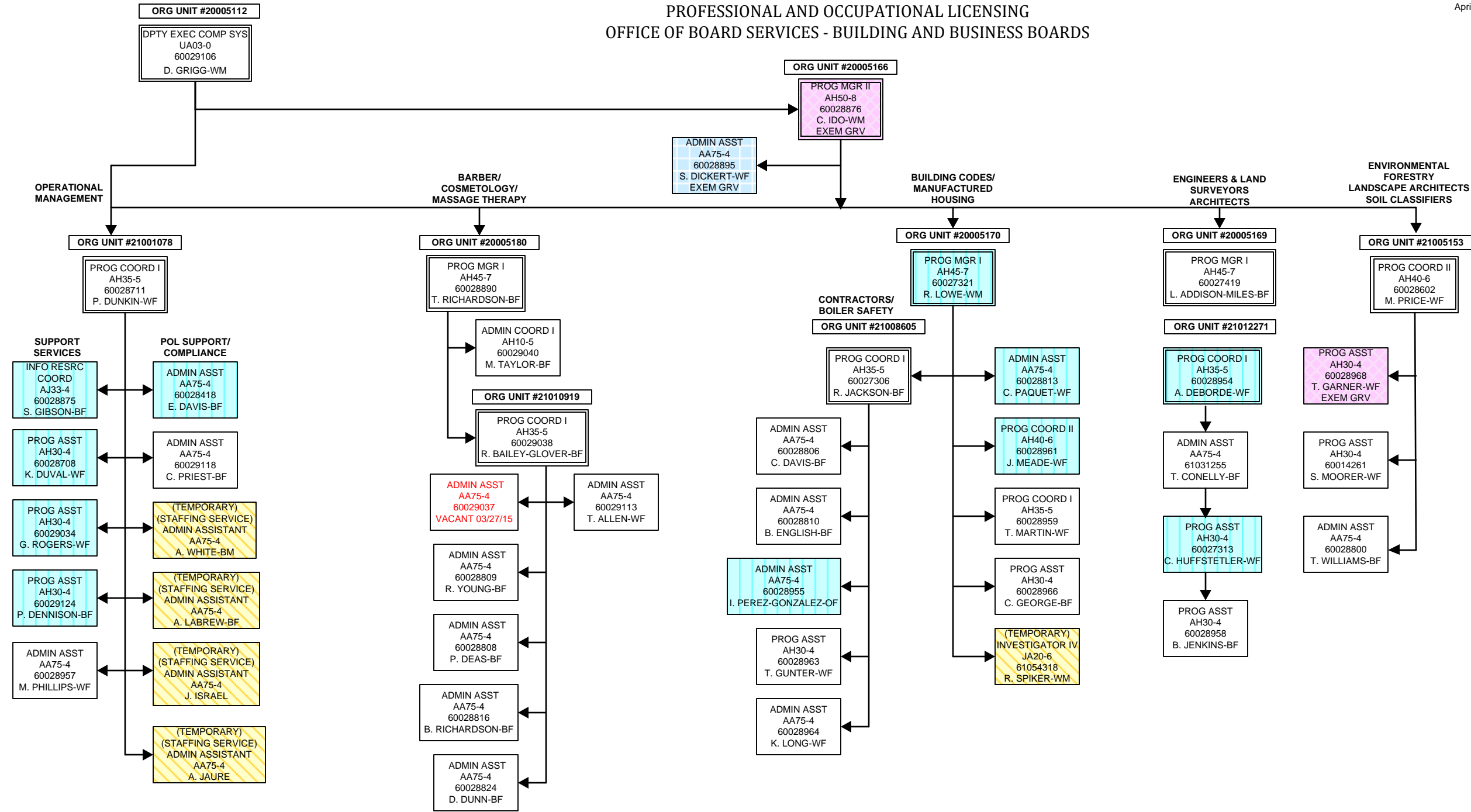
(TEMPORARY)
FSO II
JC70-4
25 TEMPS

REGION 6
ORG UNIT #21011926

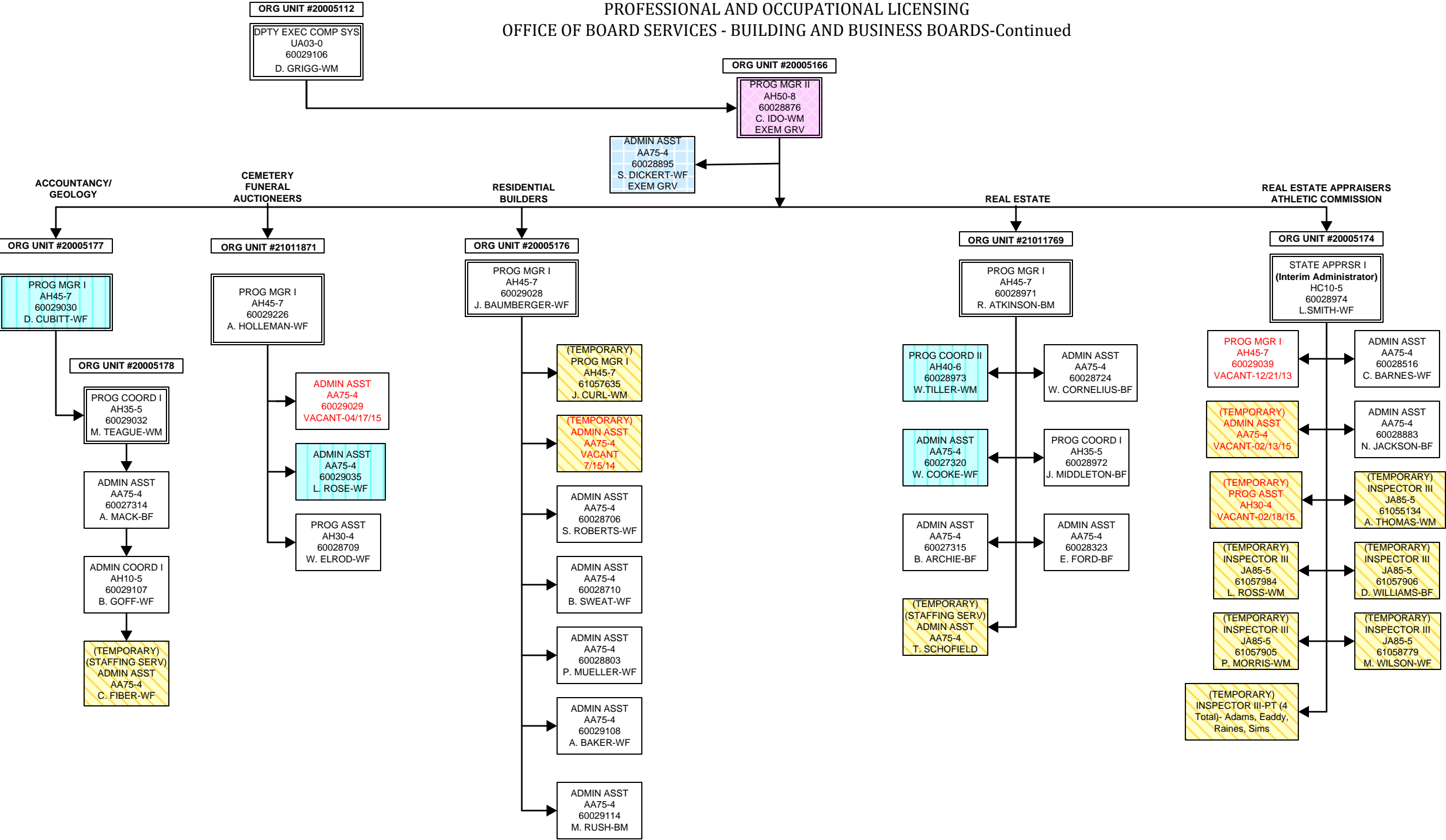
PROG COORD I
AH35-5
60028307
M. TURNER-WF

(TEMPORARY)
FSO II
JC70-4
48 TEMPS

PROFESSIONAL AND OCCUPATIONAL LICENSING
OFFICE OF BOARD SERVICES - BUILDING AND BUSINESS BOARDS

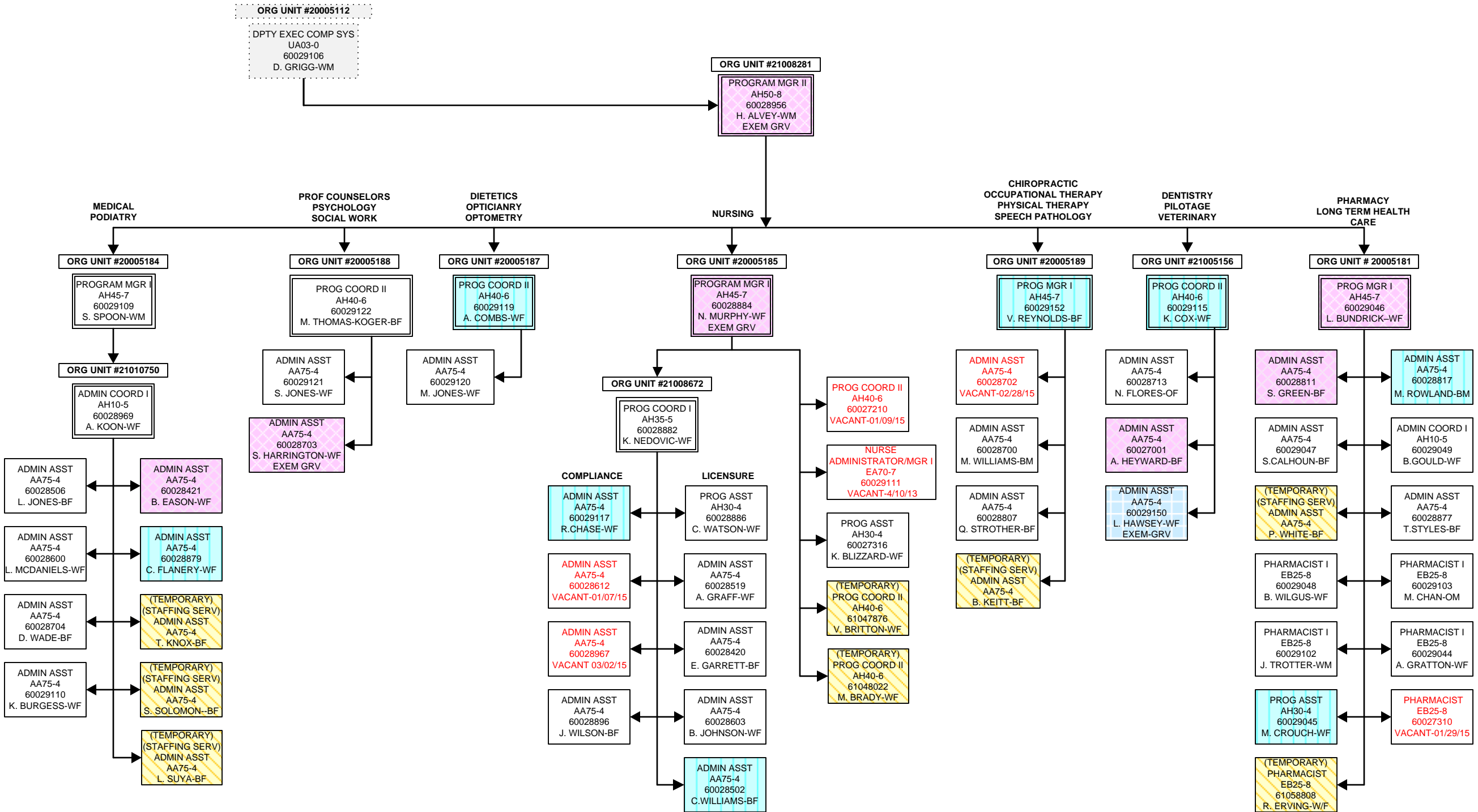


PROFESSIONAL AND OCCUPATIONAL LICENSING
OFFICE OF BOARD SERVICES - BUILDING AND BUSINESS BOARDS-Continued



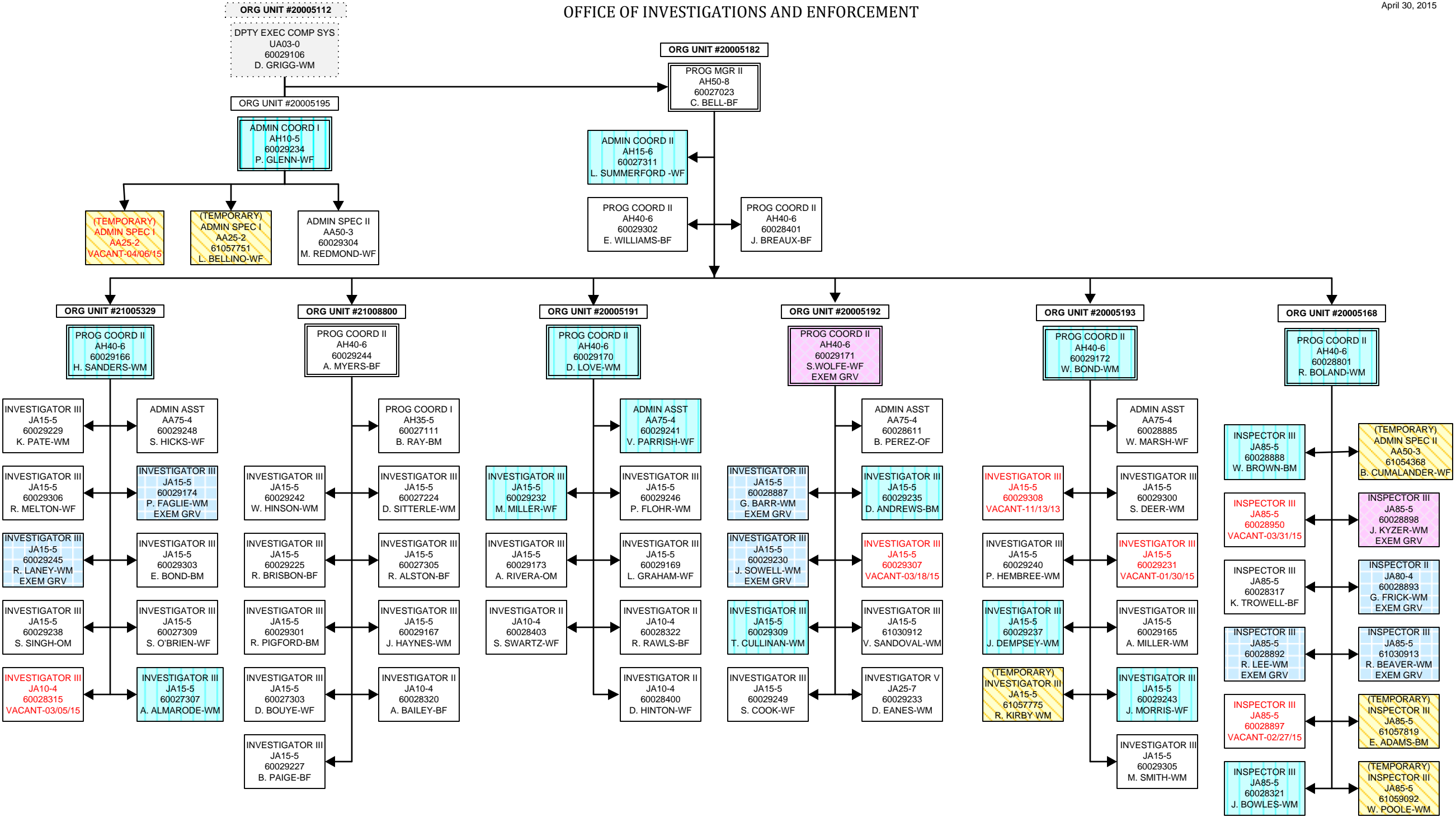
OFFICE OF BOARD SERVICES
HEALTH AND MEDICALLY RELATED BOARDS

April 30, 2015

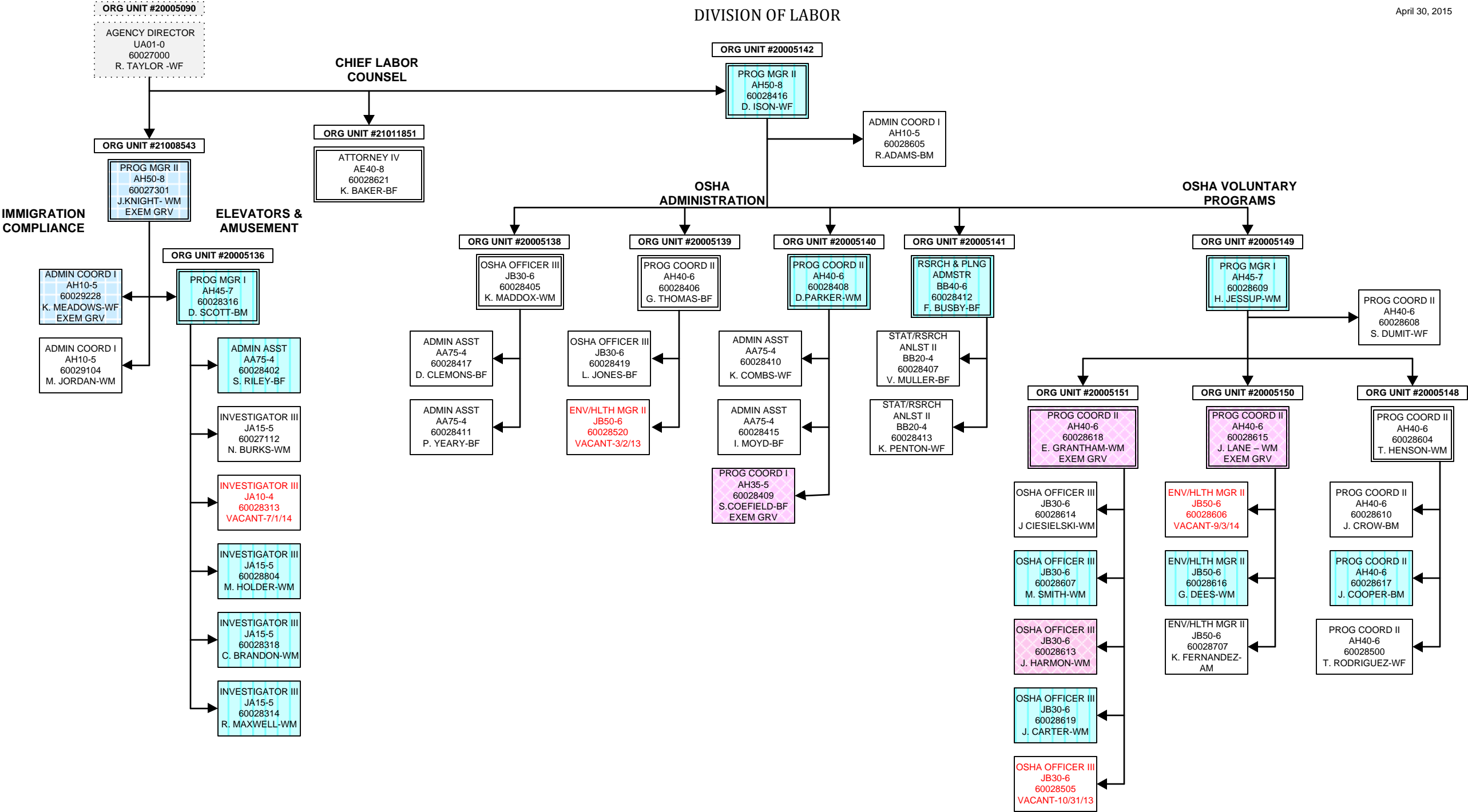


OFFICE OF INVESTIGATIONS AND ENFORCEMENT

April 30, 2015



DIVISION OF LABOR



DIVISION OF LABOR
OSHA-COMPLIANCE

