



Cultural Resources Project Screening Form

File Number: PIN: Route: County:

Project Name:

Type 1: Resurfacing, installation of fencing, signs, pavement markings, traffic signals, passenger shelters, railroad warning devices, installation of rumble strips, and landscaping

Project Type

Type 2: Bridge replacements on alignment, construction of bicycle/pedestrian facilities, and intersection improvements

Type 3: Projects that do not fall into Type 1 and Type 2 categories (e.g. road widening)

Comments

This project involves replacing the bridge that carries S-300 (Missallie Drive) over Shell Creek. The new bridge will be built on the current alignment and only a small amount of new right-of-way (ROW) is required for completion. The area of potential effects (APE) is approximately 345 feet in length and up to 85 feet wide. The APE was reviewed using ArchSite, historical topographic maps, and aerial photographs. The review indicated that one historic resource (Asset No 3018) is located within the APE. This resource, the current bridge to be replaced, was constructed in 1959 and has been determined not eligible for the National Register of Historic Places (NRHP). No other cultural resources are recorded within or near the APE. A cultural resources survey of the APE was conducted Oct. 7, 2019. The survey consisted of a pedestrian reconnaissance of the entire APE augmented by the excavation of two shovel test pits. The APE was heavily disturbed by road construction and buried utilities. No artifacts were recovered. One resource was recorded (No 2415), an early 1960s residence. It is recommended not eligible for the NRHP. It is unlikely that any previously undiscovered cultural resources will be impacted by this project. No additional cultural resources investigations are recommended.

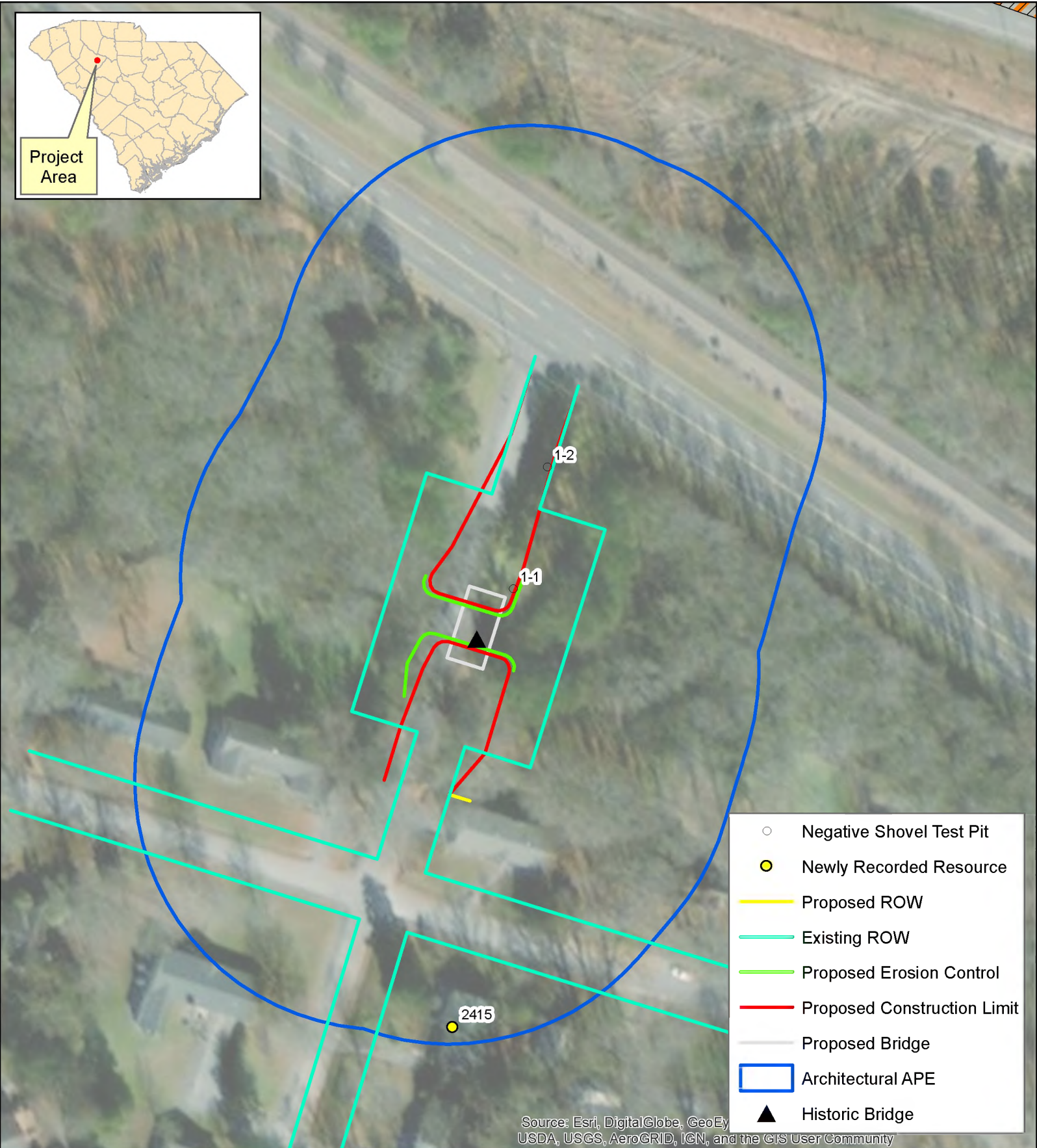
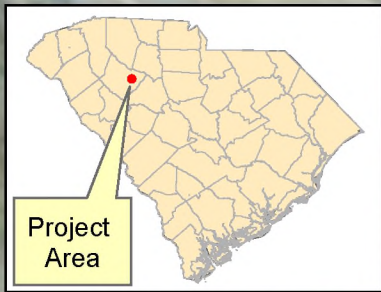
Effect Determination:

*SHPO consultation is required for all Type 3 projects and any project with a No Adverse or Adverse Effect Determination.

This screening form was developed to satisfy documentation requirements for Type I and Type II projects under a Programmatic Agreement between the Federal Highway Administration, the South Carolina State Historic Preservation Office, the US Army Corps of Engineers, and the South Carolina Department of Transportation. For Type I and Type II projects that have no effect on historic properties, the completion of this screening form with supporting documentation (e.g. ArchSite Map) provides evidence of FHWA and SCDOT's compliance with Section 106 of the National Historic Preservation Act.

Prepared by:

Review Date:



Source: Esri, DigitalGlobe, GeoEye, USDA, USGS, AeroGRID, IGN, and the GIS User Community

Date:
October 14, 2019

**S-300 over Shell Creek
Bridge Replacement**

**Laurens
County**



Project ID: P037784

